

INDEX OF SHEETS

- Sheet No. 1 Title Sheet
- " 2 Typical Sections of Improvement
- " 3 Intersections Std.
- " 4 Super-elevation "
- " 5 Traffic Control Devices
- " 6-9 Plan and Profile
- " 10-13 Cross Sections

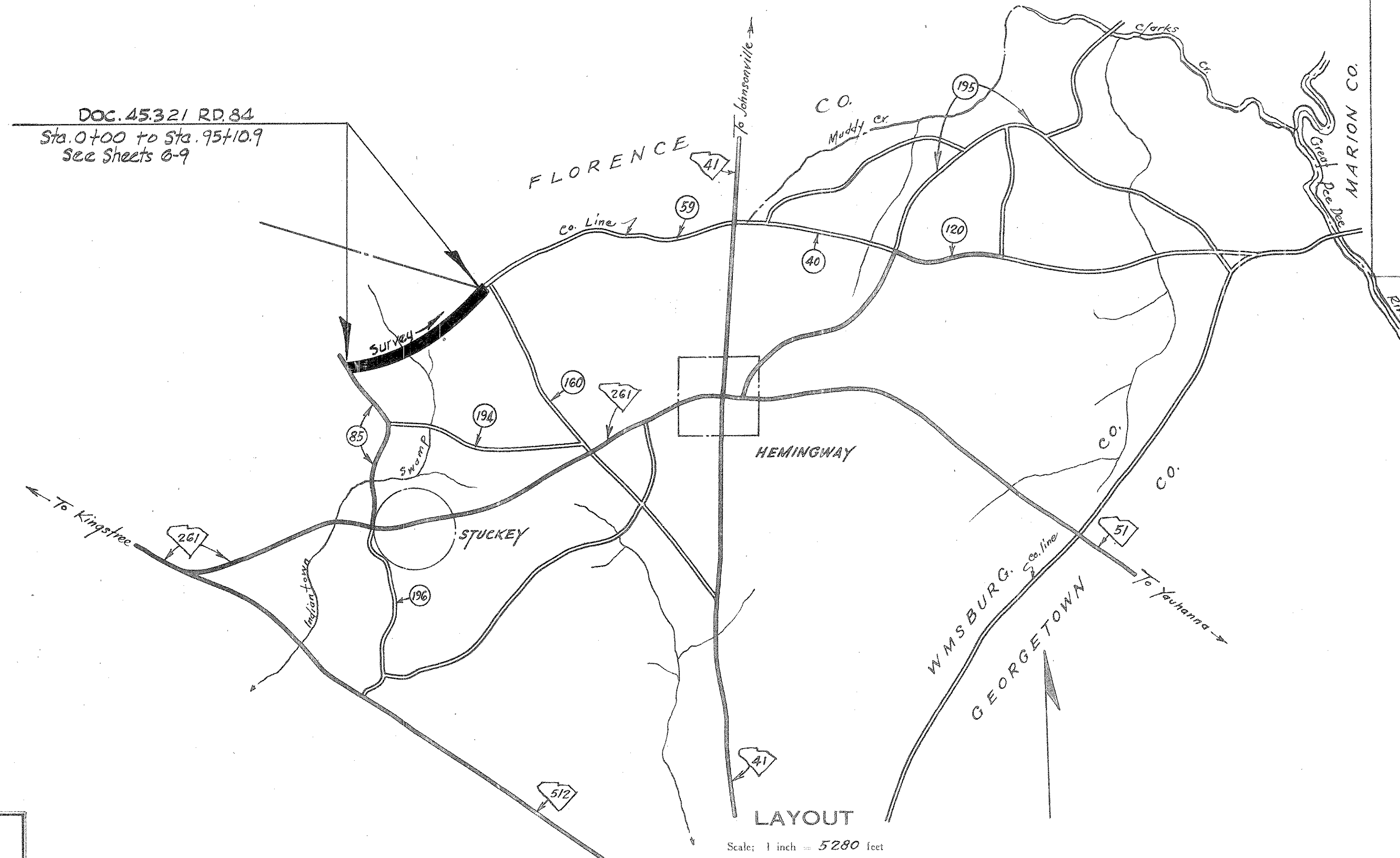
SOUTH CAROLINA
STATE HIGHWAY DEPARTMENT
COLUMBIA

PLAN AND PROFILE OF PROPOSED
STATE HIGHWAY

DOC. 45.321

RD. 84
FROM END OF PRES. PMNT. TO RD. III
WILLIAMSBURG COUNTY

SCALES: PLAN AND PROFILE 1 INCH = 100 FEET HORIZONTAL; 1 INCH = 10 FEET VERTICAL



DOC. 45.321 RD. 84
Sta. 0+00 to Sta. 95+10.9
See Sheets 6-9

Net Length of Roadway	1.801	Miles
Net Length of Bridges	—	Miles
Net Length of Project	1.801	Miles
Length of Exceptions	—	Miles
Gross Length of Project	1.801	Miles

Equalities in Stationing
None

CONVENTIONAL SIGNS	
State Line	Trolley Poles
County Line	Power Poles
City or Town Limits	Telephone or Telegraph Poles
Property Line	Marsh
Fence	Trees
Retaining Wall	Brush
Existing Road	Stumps
℄ and R.O.W. Lines of	Buildings
Proposed Road	Bridge
Railroad	Concrete Box Culvert
Levee or Embankment	Pipe Culvert
Guard Rail	Drop Inlet and Culvert
Point of Intersection (P. I.)	Hub on Center Line

LEGEND	
PROPOSED PROJECT	PAV
OTHER ROADS	BR

Note: All workmanship and material on this project to conform with South Carolina State Highway Department Standard Specifications for Highway Construction dated March 15th 1939, as approved by the Administrator, Federal Works Agency.

FED. ROAD DIV. NO.	STATE	COUNTY	DOC. NO.	P. A. PROJ. NO.	RECD	SHEET NO.	TOTAL SHEETS
3	S. C.	Williamsburg	45.321		84	1	13

SUMMARY OF ESTIMATED QUANTITIES

EARTHWORK		
Clearing and Grubbing within Roadway	Nec.	
Clearing and Grubbing of Borrow and Material Pits	1.0	Acres
Common Excavation	9173	C.Y.
Overhaul	41584	C.Y.H.M.
Selected Material for Shoulders	114.5	C.Y.
BASE COURSE		
Earth Type Base Course (Pit Material)	3824	C.Y.
Scarifying, Mixing, Remixing, Shaping and Reshaping	22.817	M.S.Y.
SURFACING		
Bituminous Surfacing (Inverted Penetration with Seal)	21760	S.Y.
STRUCTURES		
15" R.C. Pipe	168	L.F.
18" R.C. Pipe	364	L.F.
24" R.C. Pipe	60	L.F.
42" R.C. Pipe	80	L.F.
24" Relaid Pipe	43	L.F.

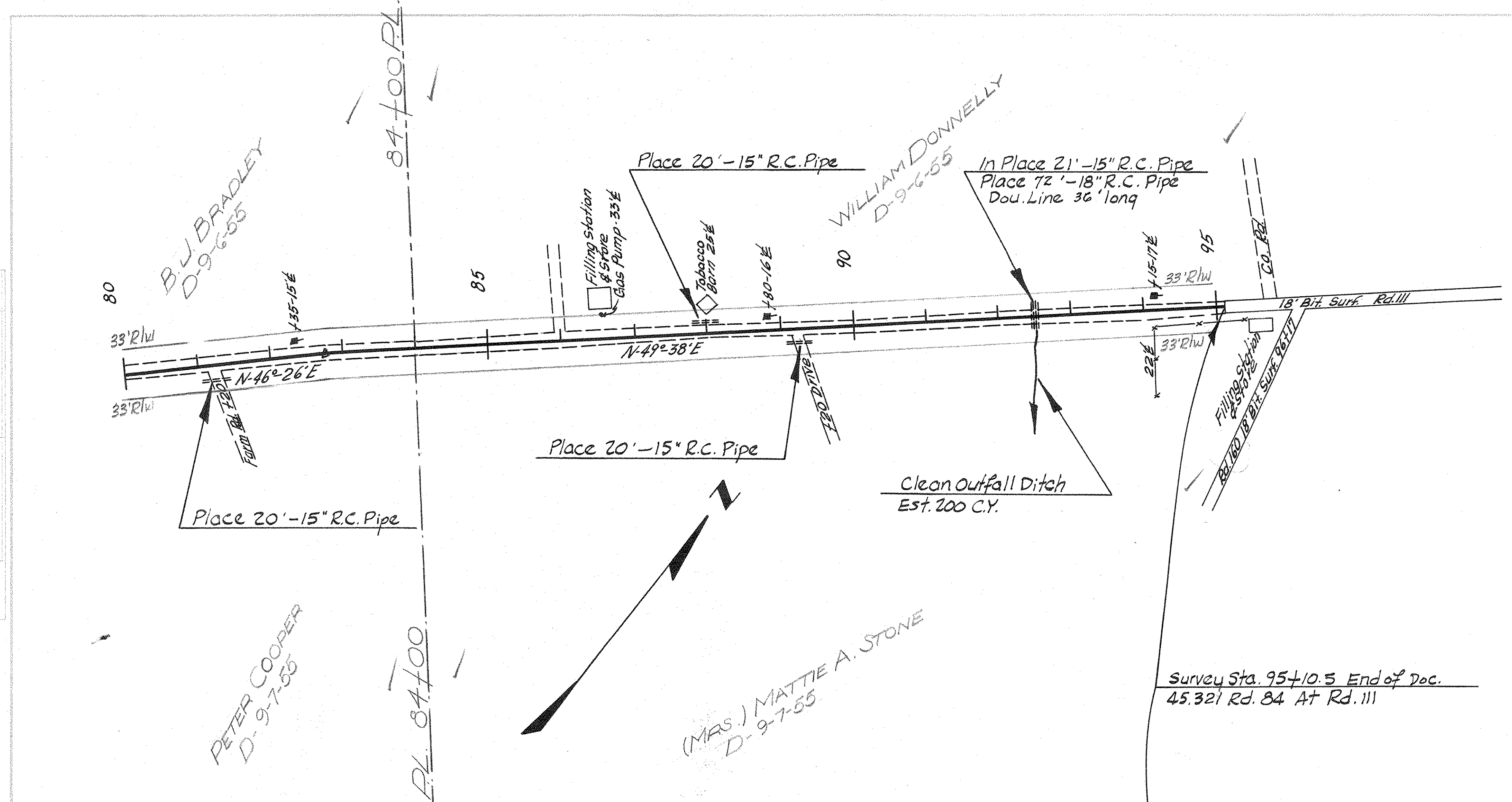
INCIDENTALS
See Sheet No. 1-A for Moving Items & Fences

APPROVED:
S. P. Roman 7-15-51
STATE HIGHWAY ENGINEER DATE

DEPARTMENT OF COMMERCE
BUREAU OF PUBLIC ROADS
RECOMMENDED FOR APPROVAL:
DISTRICT ENGINEER DATE
APPROVED:
DIVISION ENGINEER DATE

PLAN
 SURVEYED
 PLOTTED
 ALIGNED
 CHECKED
 NO. OF WY CHECKED
 NO.

PROFILE
 SURVEYED
 PLOTTED
 GRADES CHECKED
 STRUCTURE NOTED
 NO.

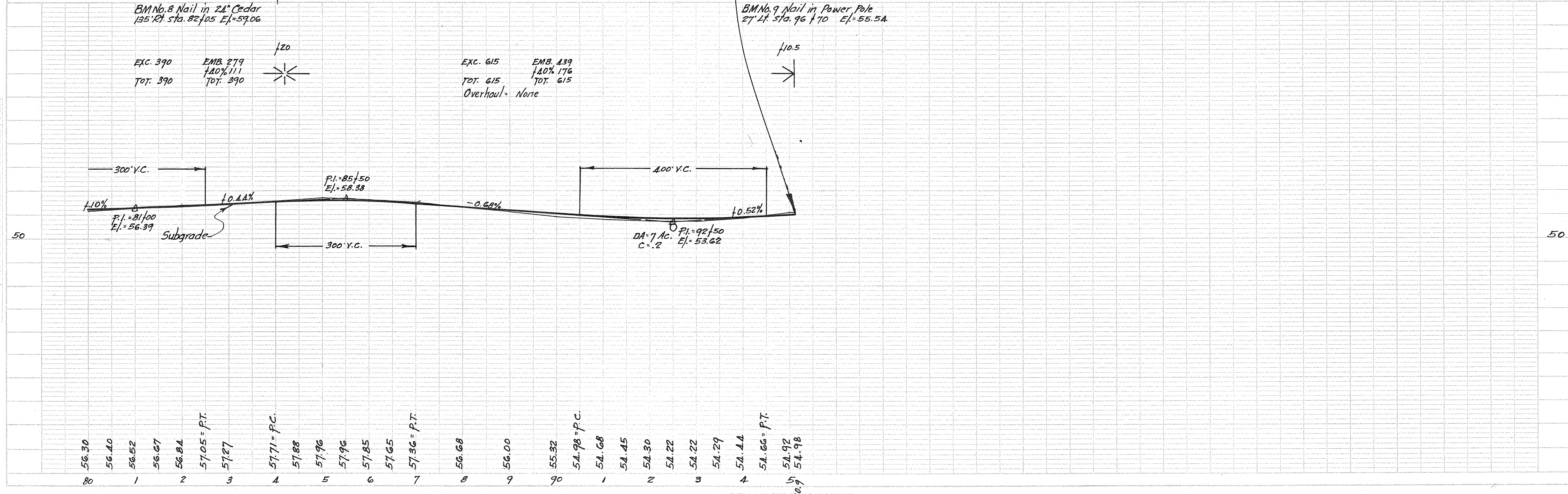


BM No. 8 Nail in 24" Cedar
 135'ht. sta. 82/05 El.=59.06

BM No. 9 Nail in Power Pole
 27'ht. sta. 96/10 El.=55.54

Exc. 390 Emb. 279
 Tot. 390 Tot. 390

Exc. 615 Emb. 139
 Tot. 615 Tot. 615
 Overhaul: None



56.30 56.40 56.52 56.67 56.84 57.05 = P.T. 57.27 57.71 = P.C. 57.88 57.96 57.96 57.85 57.65 57.36 = P.T. 56.68 56.00 55.32 54.98 = P.C. 54.68 54.45 54.30 54.22 54.22 54.29 54.14 54.66 = P.T. 54.92 54.98

Williamsburg Co.
 Rd. 84