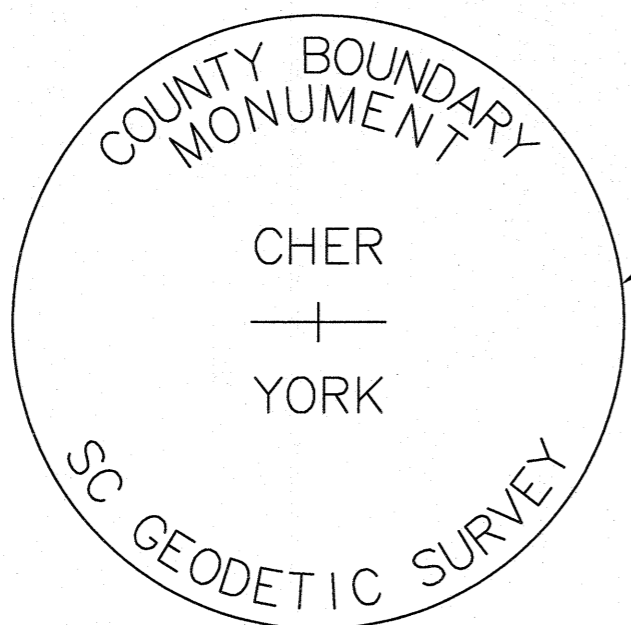


VICINITY MAP  
NOT TO SCALE



TYPICAL DISK STAMPING  
(SET #8 REBAR WITH DISK)

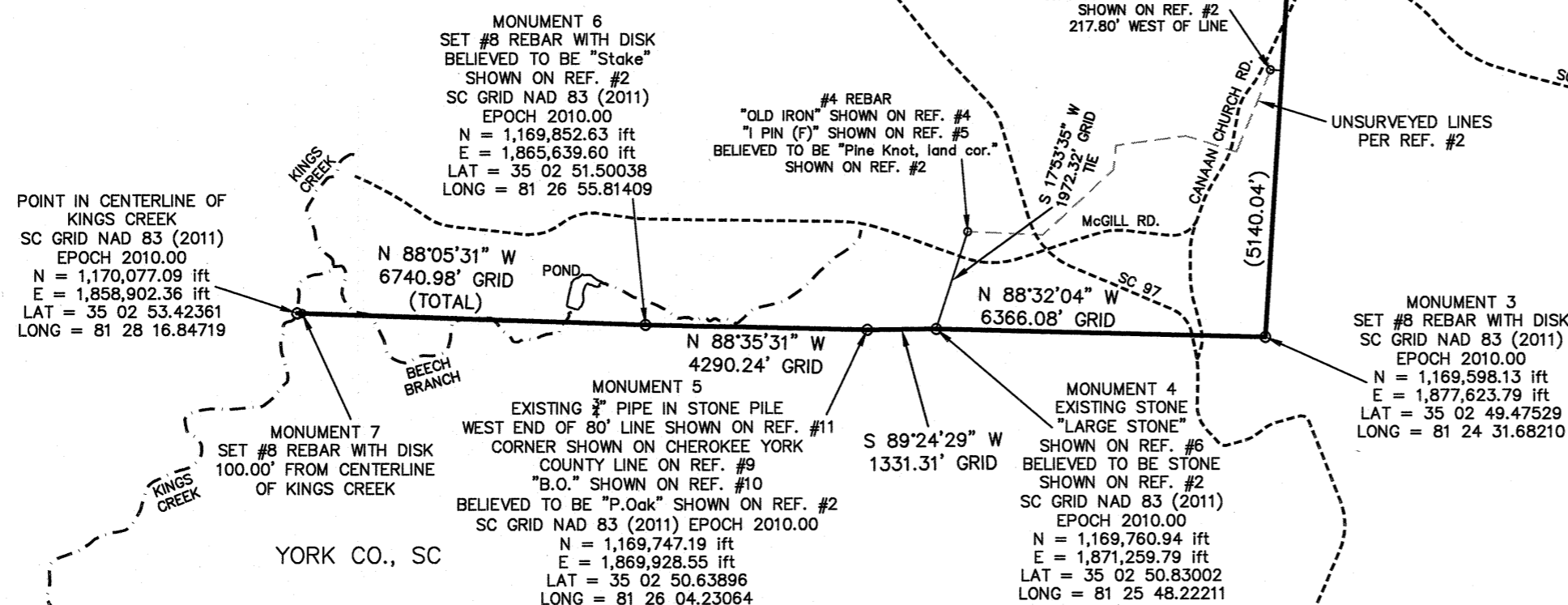
NOTES:

1. TRAVERSES ADJUSTED BY THE LEAST SQUARES ADJUSTMENT METHOD.
2. ALL DISTANCES ARE HORIZONTAL GRID DISTANCES.
3. SC GRID NAD 83 (2011) EPOCH 2010.00 BASIS OF BEARING DERIVED FROM SCGS NETWORK RTK (HORIZONTAL POSITIONAL ACCURACY = 0.07') USING GEIOD MODEL GEIOD12A. UNITS ARE INTERNATIONAL FEET.

REFERENCES:

1. MAP OF PART OF YORK COUNTY LYING N.WEST OF KINGS MOUNTAIN BATTLE GROUND; CUT OFF AND ANNEXED TO CHEROKEE COUNTY S.C.; BY J.B. FAIRES, A.P. FALLS AND JOHN L. STACY; SURVEYED MAY 28 - JUNE 2, 1920.
2. YORK COUNTY, SOUTH CAROLINA SCHOOL DISTRICT MAPS; BY J.L. STACY; DATED SEPT. 1916.
3. MAP OF "TRACT 1: DANNY R. DOVER TRACTS 2 AND 3: SAMANTHA JANE DOVER SHARON D. TEDDER JOSHUA RAY TEDDER" BY ROBERT M. BRINDLE; DATED AUGUST 4, 2004; CHEROKEE CO. MB. C116 PG. 5; YORK CO. MB. C313 PG. 2.
4. MAP TITLED "PROPERTY OF WILLIAM D. GOFORTH" BY G.R. FERGUSON; DATED FEB. 20, 1988; CHEROKEE CO. MB. 12-S PG. 52.
5. MAP TITLED "SURVEY FOR JAMES RONNIE & KATHY T. GANN" BY TED M. BEVERLY; DATED 06-05-1987; CHEROKEE CO. MB. 12-P PG. 729.
6. MAP TITLED "KENNETH ROWLAND JACKSON" BY MIKE W. BYARS; DATED 09-12-1983; CHEROKEE CO. MB. 10Y PG. 180.
7. CODE OF LAWS OF SOUTH CAROLINA 1976 VOLUME 1A; CHAPTER 3 BOUNDARIES OF EXISTING COUNTIES; SEC. 4-3-110 CHEROKEE COUNTY AND SEC. 4-3-530 YORK COUNTY.
8. MAP TITLED "RE-ESTABLISHMENT OF THE NORTH CAROLINA AND SOUTH CAROLINA BOUNDARY FROM THE CATAWBA RIVER WEST TO THE COMMON CORNER OF GREENVILLE AND SPARTANBURG COUNTIES (AT THE 1815 BOUNDARY STONE AT THE OLD BLOCK HOUSE)" BY CESI; DATED 10-07-2013; JOB NO.: 060404.
9. MAP TITLED "ABOVE PLAT A TRACT OF LAND CONTIGUOUS TO THE CHEROKEE-YORK CO. LINE 58.4 AC."; SURVEYED MARCH 11, 1972; YORK CO. MB. 42 PG. 7.
10. MAP OF 447 AC. OF LAND KNOWN AS THE MORGAN MARTIN OR NESBIT LANDS; SURVEYED NOV. 13, 1883; RESURVEYED NOV. 12, 1893; BY W.B. ALLISON; CHEROKEE CO. DB. N PG. 498.
11. MAP TITLED "PROPERTY OF ZELPHA I. ST. ONGE & RENE E. ST. ONGE" BY JOHN HILL; DATED 07-15-1977; CHEROKEE CO. MB. 10-0 PG. 7.

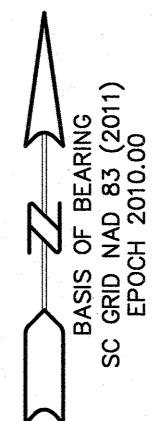
NOTE:  
THE DISTANCE (65.00 CH. = 4290') SHOWN ON REF. #2 WEST OF "P.Oak" (CURRENTLY 3" PIPE IN STONE PILE) WAS SCALED TO A GRID DISTANCE (4290.24') USING A COMBINED GRID FACTOR OF 1.00005634.



CHEROKEE CO., SC

YORK CO., SC

CLEVELAND CO., NC



LEGEND

- COUNTY LINE AS SURVEYED
- TIE LINE
- STATE LINE
- - - - - APPROXIMATE ROAD
- - - - - APPROXIMATE STREAM

I, R. ANDREW PLETCHER, HEREBY STATE THAT TO THE BEST OF MY PROFESSIONAL KNOWLEDGE, INFORMATION, AND BELIEF, THE SURVEY SHOWN HEREON WAS MADE IN ACCORDANCE WITH THE REQUIREMENTS OF THE STANDARDS OF PRACTICE MANUAL FOR SURVEYING IN SOUTH CAROLINA, AND MEETS OR EXCEEDS THE REQUIREMENTS FOR A CLASS A SURVEY AS SPECIFIED THEREIN.

PROFESSIONAL LAND SURVEYOR LICENSE NO. 22760

PRELIMINARY PLAT  
NOT FOR RECORDATION,  
CONVEYANCES OR SALES

Re-Establishment of the York County and Cherokee County Boundary from the NC & SC state line Southwest to Kings Creek  
YORK COUNTY, S.C.  
CHEROKEE COUNTY, S.C.

SURVEY FOR:  
SOUTH CAROLINA GEODETIC SURVEY  
5 GEOLOGY ROAD  
COLUMBIA, SC 29212

DATE: 05-27-2016  
SCALE: 1" = 3000'  
JOB NO.: 140487.000  
ACAD FILE: SCGrid2011.dwg

COMPUTED BY: RAP  
DRAWN BY: RAP  
CHECKED BY: FAR



Civil - Geotechnical - Surveying  
45 SPRING STREET SW CONCORD (704) 786-5404  
CONCORD, NC 28025 FAX (704) 786-7454

© CESI 2016 S.C. CERTIFICATE OF AUTHORIZATION NO. C00591