

INDEX OF SHEETS

- SHEET No. 1 TITLE PAGE.
- " " 2 TYPICAL CROSS SECTION OF IMPROVEMENT.
- " " 3 ENDWALLS FOR PIPE CULVERTS.
- 4-6A SUPERELEVATION OF CURVES & LOW WOOD GUARD RAIL.
- 5-7 PLAN & PROFILE, STA 1256+05 TO STA 1297+00.
- 8 7x12' REIN. CONC. BOX CULVERT, STA 1261+50.
- 9-12 CROSS SECTIONS, STA 1256+05 TO STA 1297+00.

**STATE OF SOUTH CAROLINA
STATE HIGHWAY DEPARTMENT**

**PLAN AND PROFILE OF PROPOSED
STATE HIGHWAY**

No. 678

ROUTE NO. ~~24~~ New Rt. 178

GREENWOOD COUNTY

SALUDA COUNTY LINE TO INTERSECTION WITH ROUTE NO. 55

SCALE: PLAN AND PROFILE, 1 INCH = 100 FEET HORIZONTAL; 1 INCH = 10 FEET VERTICAL.

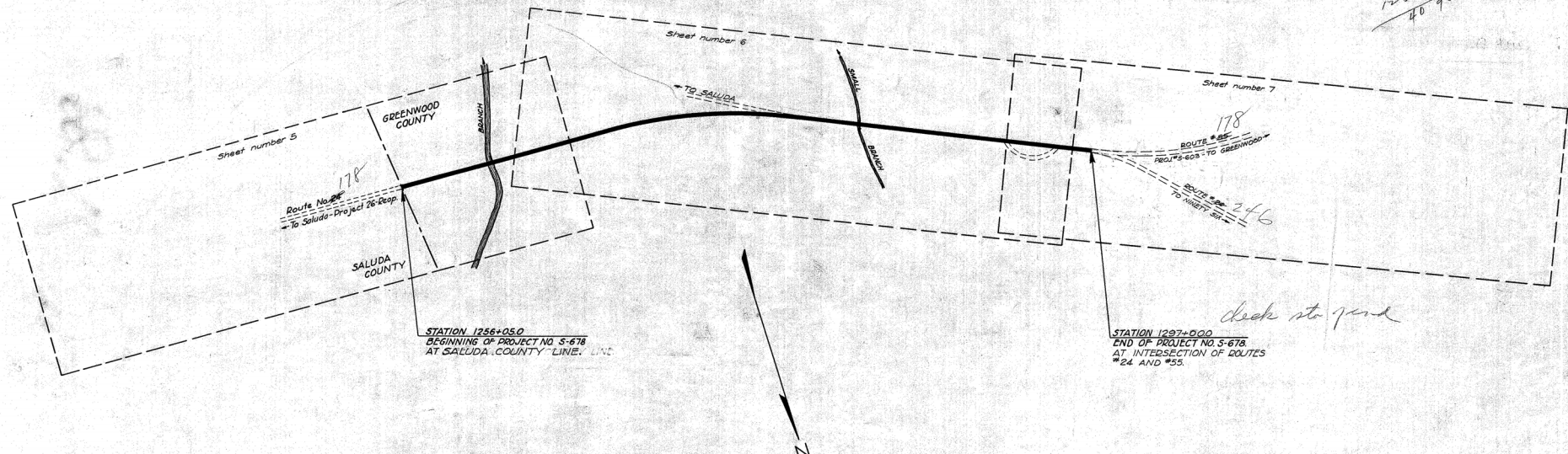
FED. ROAD DIST. NO.	STATE	COUNTY	STATE PROJ. NO.	ROUTE NO.	SHEET NO.	TOTAL SHEETS
8	S. C.	GREENWOOD	678	24	1	12

SUMMARY OF ESTIMATED QUANTITIES											
STATION	SHEET NO.	ITEM	TIMBER (CUBIC YARDS)		BRICKS (1000'S)	CEMENT (CU. YD.)		IRON (LBS.)		STEEL (LBS.)	
			CLASS "A"	CLASS "B"		NET	NET	TREATED	UNTREATED		
1261+50	5 & 6	ENDWALLS FOR PIPE CULVERTS 7x12' REIN. CONC. BOX CULVERT	51.5	0.07	405	1275.0					60
TOTALS			51.5	0.07	405	1275.0					60

SHA.	QUANTITIES	UNIT	REMARKS
17'	251	ACRES	TOTAL CLEARING & GRUBBING WITHIN 50'
18'	300	CUBIC FEET	TOTAL ROCK EXCAVATION
19'	400	CUBIC FEET	TOTAL LOW WOOD REMOVED
20'	4.491	CUBIC YARDS	TOTAL EXCAVATION - COMMON
21'	3.985	SQUARE YARDS	TOTAL PLAIN CONCRETE SURFACING 18" x 18" WIDE
22'	3000	SQUARE YARDS	TOTAL PLAIN CONCRETE SURFACING 18" x 18" x 18" WIDE
23'	1.803	CU. YD.	TOTAL CONSTRUCTION JOINT DEMOLITION

* DOES NOT INCLUDE 25% C.Y. OF ROCK EXCAVATION.
* INCLUDES 375 C.Y. FOR DITCHES, ROAD CONNECTION, & CHANNEL CHANGE.

*1297+00
1256+05
4075*



CONVENTIONAL SIGNS	
State Line	Trolley Poles
County Line	Power Poles
City or Town Limits	Telephone or Telegraph Poles
Property Line	Marsh
Fence	Trees
Retaining Wall	Brush
Existing Road	Stumps
℄ and R.O.W. Lines of	Buildings
Proposed Road	Bridge
Railroad	Concrete Box Culvert
Levee or Embankment	Pipe Culvert
Guard Rail	Drop Inlet and Culvert
Point of Intersection (P. I.)	Hub on Center Line

LEGEND	
PROPOSED PROJECT	—
OTHER ROADS	- - - - -

LAYOUT	
Scale: 1 inch = 300 Feet	
Gross Length of Project	= 0.775 Miles
Exceptions	= Miles
Net Length of Project	= 0.775 Miles
Equals in Stationing	
NONE	

Note: All workmanship and material on this project to conform with South Carolina State Highway Department Specifications, Contract and Bond; for Roads and Culverts, revised May, 1927 and for Bridges, revised Dec. 1st, 1921, as amended and approved by the U. S. Secretary of Agriculture.

APPROVED	DATE
<i>Paul Thompson</i>	3-17-28
STATE HIGHWAY ENGINEER	
RECOMMENDED FOR APPROVAL	DATE
RECOMMENDED FOR APPROVAL	DATE
APPROVAL	DATE
DIRECTOR - BUREAU OF PUBLIC WORKS	

TYPICAL SECTIONS

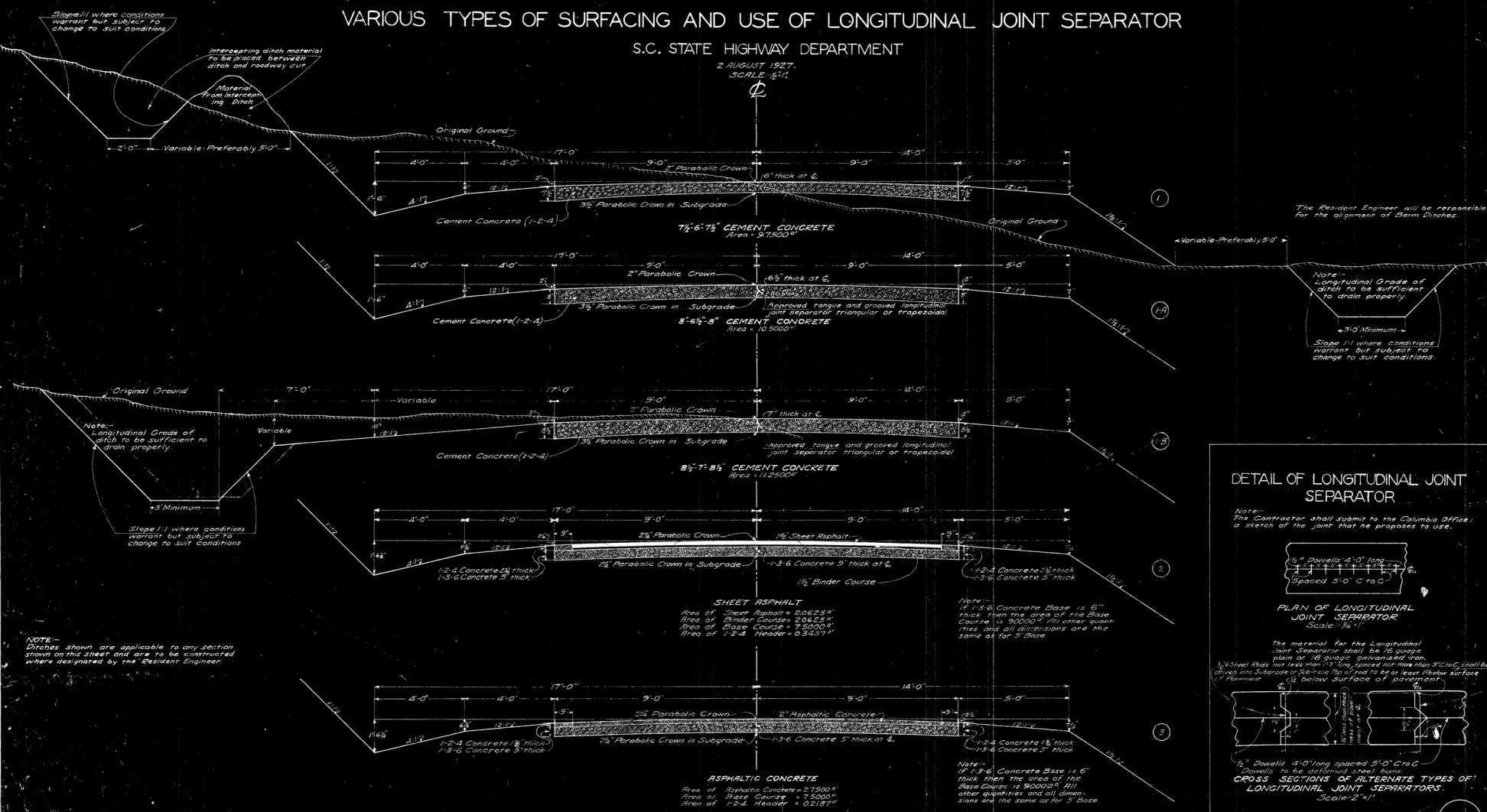
SHOWING

VARIOUS TYPES OF SURFACING AND USE OF LONGITUDINAL JOINT SEPARATOR

S.C. STATE HIGHWAY DEPARTMENT

2 AUGUST 1927.
SCALE - 1/2" = 1'

FED. ROAD DIST. NO.	STATE	COUNTY	SEC. AND TOWNSHIP	ROUTE NO.	SHEET NO.	TOTAL SHEETS
0	S.C.	GREENWOOD	670	24	2	12

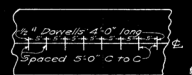


The Resident Engineer will be responsible for the alignment of Storm Ditches.

Note - Longitudinal Grade of ditch to be sufficient to drain properly.
 ← 3'-0" Minimum →
 Slope 1/1 where conditions warrant but subject to change to suit conditions.

DETAIL OF LONGITUDINAL JOINT SEPARATOR

Note - The Contractor shall submit to the Columbia Office a sketch of the joint that he proposes to use.



PLAN OF LONGITUDINAL JOINT SEPARATOR
 Scale - 1/2" = 1'

The material for the Longitudinal Joint Separator shall be 16 gauge plain or 16 gauge galvanized iron. 1/2" Steel Rods no. less than 1/2" dia. spaced one inch from 3" C to C shall be driven into Subgrade at 5'-0" C to C and to be at least 1/2" below surface of Base Course, 3/4" below surface of 1-2-4 Header.



1/2" Dowels 4'-0" long spaced 5'-0" C to C
 Dowels to be galvanized steel bars.
CROSS SECTIONS OF ALTERNATE TYPES OF LONGITUDINAL JOINT SEPARATORS.
 Scale - 2" = 1'

NOTE - Ditches shown are applicable to any section shown on this sheet and are to be constructed where designated by the Resident Engineer.

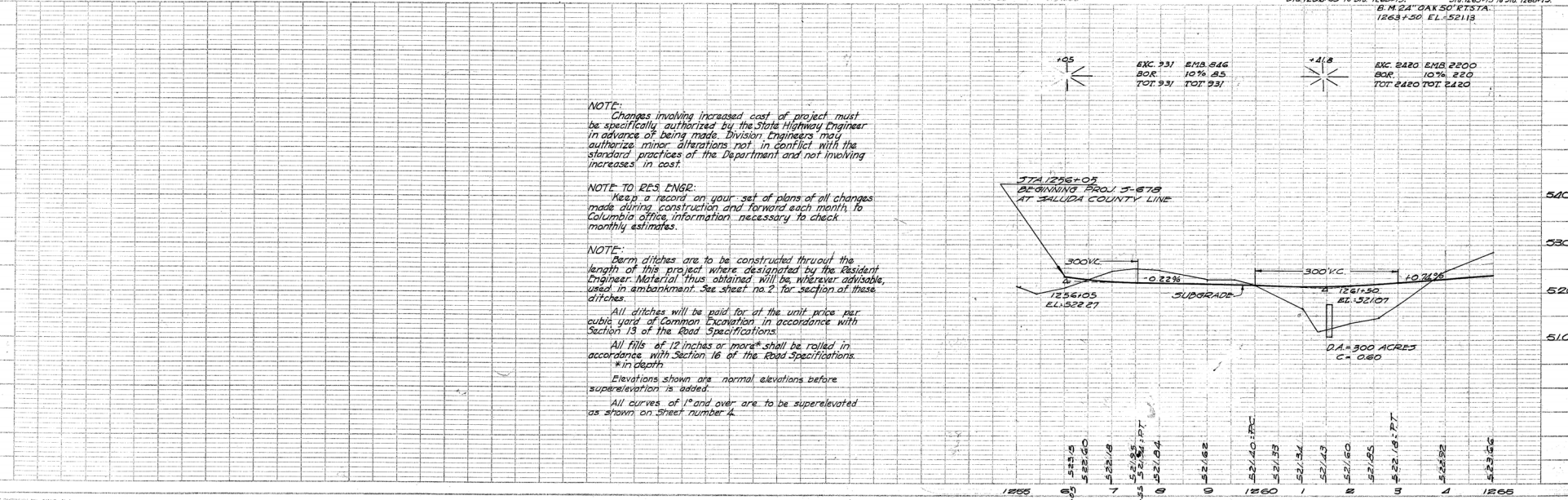
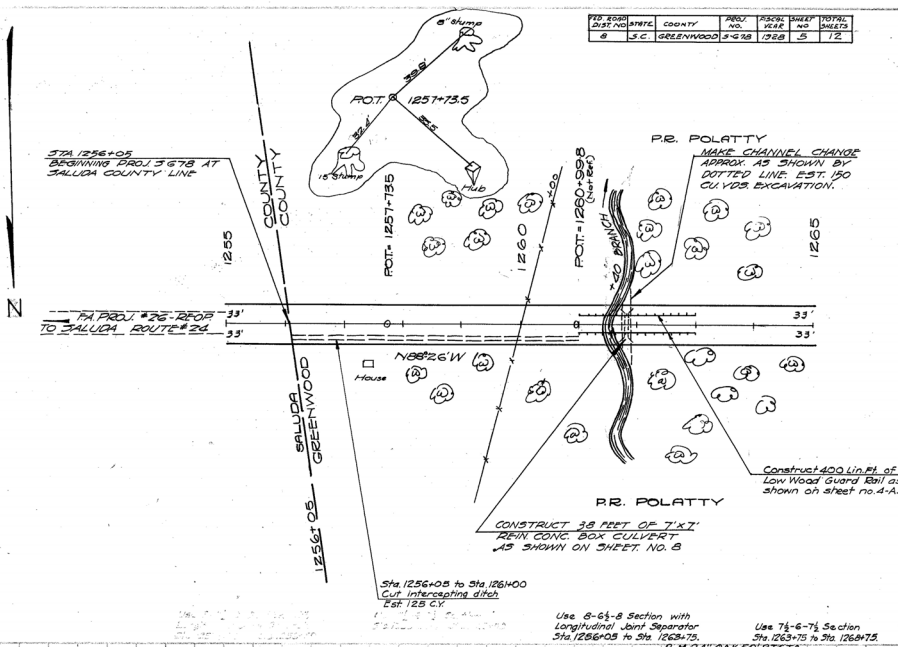
Approved by R. H. R.
 Checked by R. H. S.

Drawing 7-35

APPROVED
 PLANNING
 DIVISION
 STATE HIGHWAY DEPARTMENT
 COLUMBIA, MISSOURI

DATE: 12/15/54
 DRAWN BY: [Signature]
 CHECKED BY: [Signature]

PROJECT NO.	DIST. NO.	COUNTY	PARCEL NO.	SECTION	TOTAL SHEETS
6	S.C.	GREENWOOD	5-6-18	1268	5 12



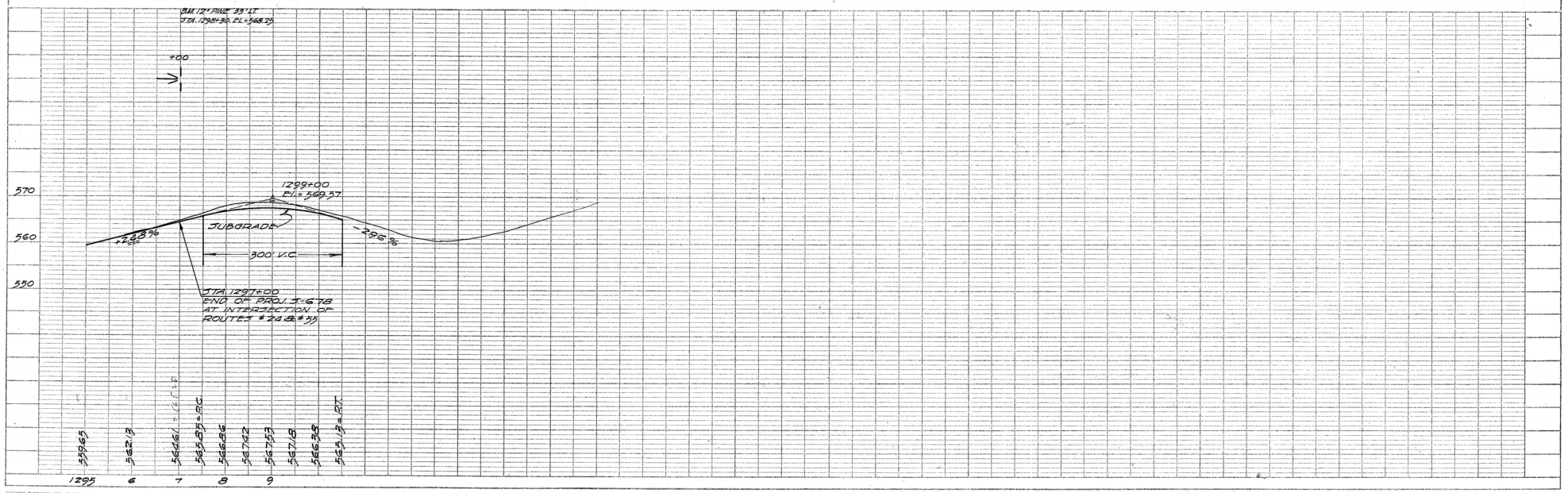
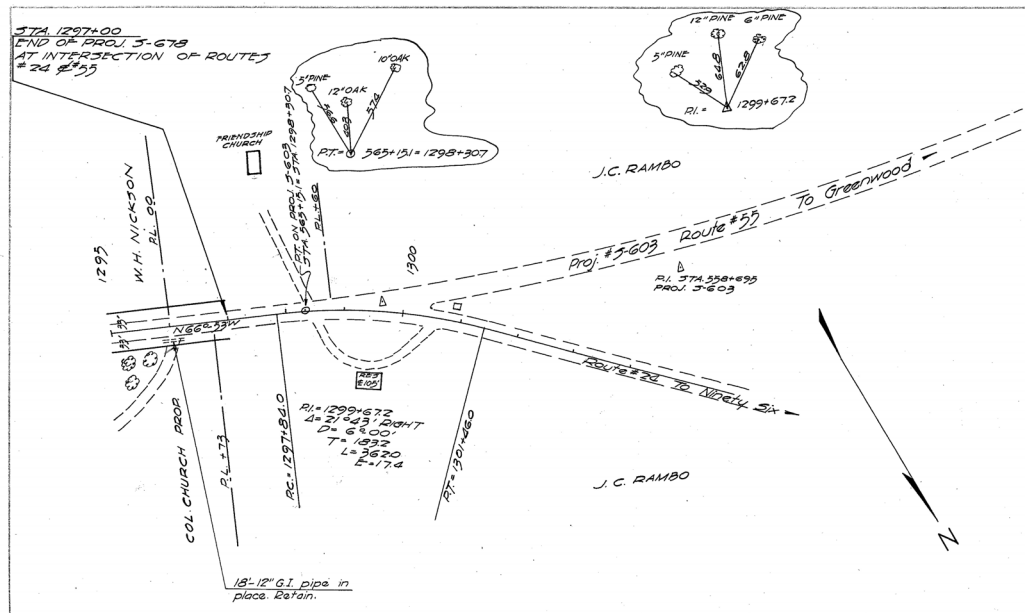
NOTE:
 Changes involving increased cost of project must be specifically authorized by the State Highway Engineer in advance of being made. Division Engineers may authorize minor alterations not in conflict with the standard practices of the Department and not involving increases in cost.

NOTE TO RES. ENGR:
 Keep a record on your set of plans of all changes made during construction and forward each month to Columbia office, information necessary to check monthly estimates.

NOTE:
 Ditch ditches are to be constructed thruout the length of this project where designated by the Resident Engineer. Material thus obtained will be, wherever advisable, used in embankment. See sheet no. 2 for section of these ditches.

All ditches will be paid for at the unit price per cubic yard of Common Excavation in accordance with Section 13 of the Road Specifications.
 All fills of 12 inches or more shall be rolled in accordance with Section 16 of the Road Specifications.
 Elevations shown are normal elevations before superelevation is added.
 All curves of 1° and over are to be superelevated as shown on sheet number 4.

FED. ROAD DIST. NO.	STATE	COUNTY	STATE PROJ. NO.	ROUTE NO.	SHEET NO.	TOTAL SHEETS
6	S.C.	GREENWOOD	678	24	7	12



PLAN
 DRAWN BY: [blank]
 CHECKED BY: [blank]
 DATE: [blank]

PROFILE
 DRAWN BY: [blank]
 CHECKED BY: [blank]
 DATE: [blank]

