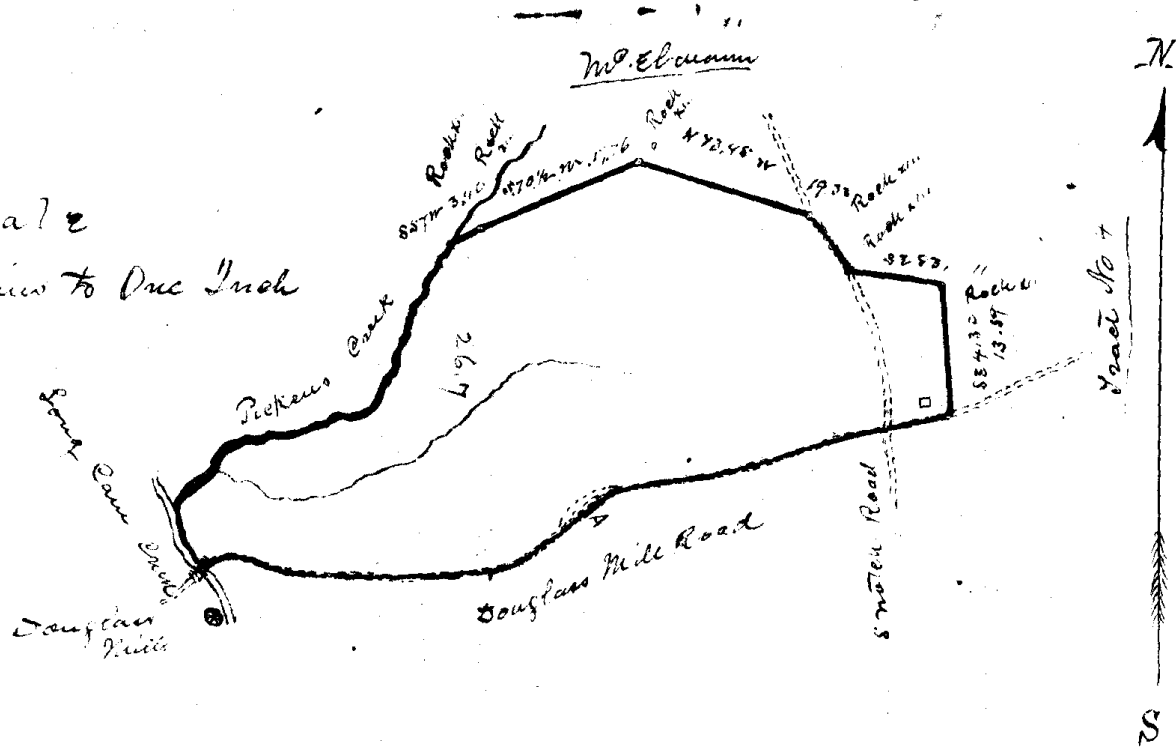


No 2

②

198. acs

Scale
20 chains to One Inch



The above Plat, marked No 2, represents
 a portion of the real estate of James H. McKles
 partly surveyed and partly copied from surveys
 of J. A. McCord, lying near Long Cam Creek
 in Abbeville Co. S.C. - I find it to contain
 198 acs more or less and having such shape
 marks and bounds as above represented

Oct 1896

PB 10-103

J. J. Kirk
D.S.