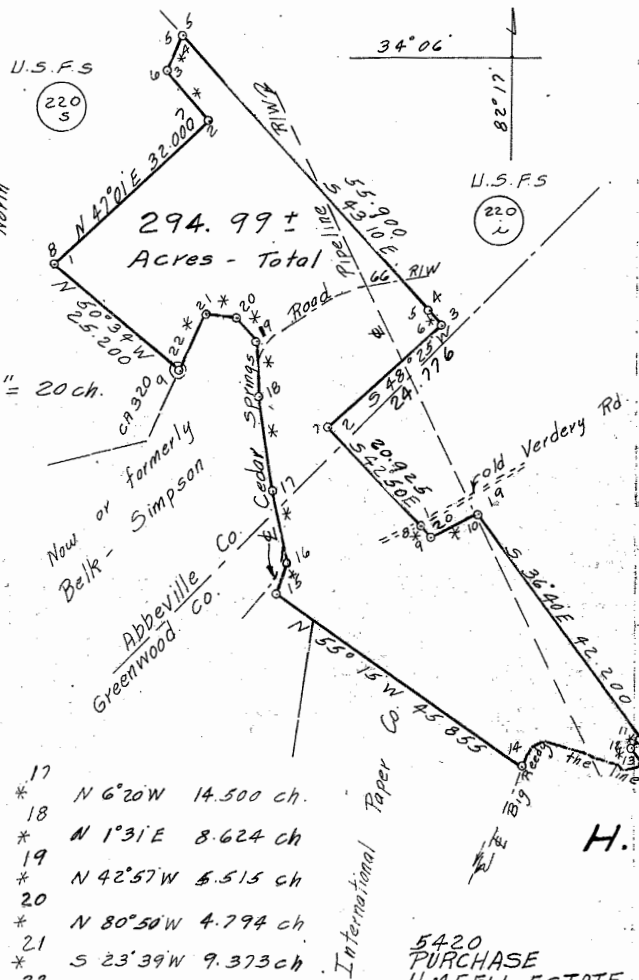


Area by Counties: Abbeville 161.52
 Greenwood 133.47
 TOTAL 294.99 Acres

- 2
 * N 40° 54' W 10.150 ch.
 3
 * N 24° 39' E 6.000 ch.
 4
 5
 * S 43° 00' E 3.300 ch
 6
 8
 * S 41° 00' E 2.600 ch
 9
 * N 62° 35' E 8.300 ch
 10
 11
 * S 52° 00' W 2.300 ch
 12
 * S 35° 00' E 3.600 ch
 13
 a S 77° 00' W 3.500 ch
 b N 51° 50' W 1.060 ch
 c N 81° 00' W 0.780 ch
 d N 71° 10' W 0.900 ch
 e N 76° 50' W 2.000 ch
 f N 66° 15' W 0.700 ch
 g N 74° 40' W 3.300 ch
 h N 75° 25' W 4.000 ch
 i S 65° 25' W 2.520 ch
 j S 34° 00' W 1.270 ch
 14
 * S 18° 00' W 2.040 ch
 15
 * N 18° 58' E 5.492 ch
 16
 * N 9° 40' W 11.100 ch
 17



294.99 ±
 Acres - Total

Scale 1" = 20 ch.

U.S. F.S.
 (220 S)

U.S. F.S.
 (220 L)

- 17
 * N 6° 20' W 14.500 ch.
 18
 * N 1° 31' E 8.624 ch
 19
 * N 42° 57' W 5.515 ch
 20
 * N 80° 50' W 4.794 ch
 21
 * S 23° 39' W 9.373 ch
 22

Atlas Sheet 11-21

- COR. 15 - 1/4" IP
 BT. 4" Pine S 34° W 0.630 CH
 BT. 4" Pine S 14 1/2° W 0.750 CH
 BT. 5" Pine S 61° E 0.265 CH
 BT. 3" Pine N 50° E 0.430 CH

- COR. 16 - 1/4" IP
 BT. 5" Pine N 41 1/4° E 0.120 CH
 BT. 6" Pine S 74° E 0.085 CH
 BT. 3" Pine S 43° W 0.048 CH

- COR. 17 - Point & Pavt.
 R.M. 1/4" IP N 82° 50' E 0.500 CH
 B.T. 6" Cedar N 39 1/4° E 0.585 CH
 B.T. 4" Cedar N 81° E 0.415 CH
 B.T. 8" Pine S 46 1/2° E 0.685 CH

- COR. 18 - Point & Pavt.
 R.M. 1/4" IP N 87° 35 1/2° E 0.500 CH
 B.T. 6" Pine N 36 1/2° E 0.530 CH
 B.T. 6" Pine N 85 3/4° E 0.386 CH
 B.T. 6" Cedar S 46° E 0.550 CH

- COR. 19 - 1/4" IP
 BT. 5" Pine N 47 1/2° W 0.435 CH
 BT. 6" Cedar N 83° W 0.290 CH
 BT. 18" Pine S 22° E 1.380 CH
 BT. 4" Pine S 40 1/2° E 1.222 CH

- COR. 20 - 1/4" IP with cut stone
 BT. 8" Pine N 20° E 0.055 CH
 BT. 2" Pine S 68° W 0.025 CH
 B.T. 12" Pine N 79° W 0.475 CH
 B.T. 3" Pine N 85° E 0.105 CH

- COR. 21 - 1/4" IP with cut stone
 BT. 18" Pine S 70° W 0.025 CH
 BT. 8" S.Gum S 13° E 0.175 CH
 BT. 5" Pine N 71° E 0.305 CH
 BT. 7" Pine N 53° E 0.335 CH

COR. 22 - CA. MON. 320

CORNERS IN CENTERLINE
 BIG REEDY CREEK

COR. 13 - POINT IN & S 35° 00' E
 3.600 CH. FROM COR. 12 U.S.A. TR. 220

COR. 14 - POINT IN &
 BT. 22" ASH N 35° W 0.100 CH
 BT. 3" GUM S 80° W 0.255 CH

H. M. FELL ESTATE
 TRACT NO. 164

5420
 PURCHASE
 H.M. FELL ESTATE
 TRACT NO. 164
 ABBEVILLE & GREENWOOD Co., S.C.
 294.99 ACRES, MORE OR LESS

Survey By: L.E. LEWIS R.L.S. 4118 S.C.
 Notebook: L.C-1 Pg. 3-21
 Plat By: L.E. LEWIS DATE 3-12-71
 Checked By: R.P. PARKER 3/16/71
 Approved By: R.R. Bailey Jr. 3/16/71 Date
 Title: Forest Engineer

(1-4)

SURVEYOR'S REPORT

of the

H.M. Fell's Estate

Tract No. 164

The H.M. Fell's Estate consists of two contiguous parcels lying in Abbeville and Greenwood Counties along each side of Cedar Springs Road (FH 36). The smaller parcel of 144.7 acres (by this survey) and as recorded in Deed Book 53, Page 80, Clerk of Courts Office, Abbeville County is entirely within Abbeville County and bounded along all except its westerly side by U.S. Forest Service Tracts 220i and 220s.

The larger parcel of 150.3 acres (by this survey) and as recorded in Deed Book 80, Page 188, Clerk of Court's Office, Greenwood County lies partially in Abbeville and partially in Greenwood County and is bounded on the easterly side by U.S. Forest Service Tract 220i, along the southerly side by Big Reedy Creek (the line) and the westerly side by International Paper Company.

With data available from said Forest Service Tracts only the exterior lines adjoining private property were run in the field. All courses traversed in the field (with the exception of the meanders of Big Reedy Creek) were traversed twice to avoid a large mistake. The meanders of Big Reedy Creek were plotted against an existing plat of survey done for International Paper Company in June 1950 by S.M. Gladstone Surveyor and compared so favorably that the calls for distance by the Gladstone survey were held.

Angles turned and distances measured by James R. Wall, R.L.S. 3129 in bringing the lines of Tracts 220i & 220s to Forest Service standard in 1964 were held as he found them from corner 4, Tract 220i to corner 5, Tract 220i and from corner 5, Tract 220s to corner 9, Tracts 220s.

Relative error of closure for the total boundary obtained by using existing Forest Service calls, updated Forest Service lines of Tracts 220i and 220s and courses traversed by this survey was approximately 1 part in 197. This error, although larger than desired, is believed to exist mainly in the older Forest Service lines of Tract 220i. After careful consideration the relative error was apportioned between corners 1, 2 and 3 of Tract 220i. While this

(2-4)

method is admittedly entirely arbitrary it is believed justified in this instance. The position of the south line (Big Reedy Creek) and the west line (common to International Paper Company) are verified by an existing plat of survey. The east and west limits of the entire tract are controlled by careful measurements along the paving of Cedar Springs Road. The north lines and a portion of the eastern boundary have been re-run in recent years by a registered land surveyor.

The accompanying plat and legal description reflect this adjustment. All bearings were referred to the true meridian based on the bearing of South $43^{\circ} 10'$ East of the line corner 5, Tract 220i to corner 4, Tract 220i as called for by the tract description for U.S. Forest Service Tract 220i.

BEGINNING AT CORNER 1, Tract 164 common to corner 8, Tract 220s.

Thence running in reverse with Tracts 220s and 220i to corner 12.

Corner 12, Tract 164 common to corner 17, Tract 220i.

Thence South $35^{\circ} 00'$ East 3.600 chains to the centerline of Big Reedy Creek, Corner 13.

Corner 13, Tract 164 on Forest Service line between corner 16, Tract 220i and corner 17, Tract 220i, and in the centerline of Big Reedy Creek.

Thence with the meanders of Big Reedy Creek, and using the distance and angles as given by International Paper Company's plat of survey of June 1950 by S.M. Gladstone of Drake No. 1 and Drake No. 2 properties, to corner 14.

Corner 14, Tract 164 in the centerline of Big Reedy Creek. Marked and scribed new bearing trees. This corner found witnessed by a 22" ash leaning over Big Reedy Creek. Blazed on creek side and posted by International Paper Co.

Thence North $55^{\circ} 15'$ West along a well marked and posted line of International Paper Company 45.855 chains to corner 15, passing a 2" iron pipe marking the corner of International Paper Company at 39.520 chains.

Corner 15, Tract 164, set a 1 1/4" diameter galvanized iron pipe with aluminum cap on extension of International Paper Company's marked and posted line and in the centerline of an old road bed. The available information for the H.M. Fell's Estate calls for this corner and the following four to follow the centerline of Cedar Springs Road. Examination of aerial photographs, field evidence and State Highway plans show that Cedar Springs Road has been improved in the vicinity of corners 15, 16 and 19 by re-alignment.

(3-4)

Thence North $18^{\circ} 58'$ East 5.492 chains with the Fell Estate and Belk-Simpson's line to corner 16.

Corner 16, Tract 164, set a 1 1/4" diameter galvanized iron pipe with aluminum cap at the apparent P.I. of the old road bed. Marked and scribed bearing trees.

Thence North $9^{\circ} 40'$ West 11.100 chains, with the Fell Estate and Belk-Simpson's line to corner 17.

Corner 17, Tract 164, set a nail and cap in the centerline of the pavement of the Cedar Springs Road. Marked and scribed bearing trees. Also set a 1 1/4" diameter galvanized iron pipe with aluminum cap on the easterly right-of-way of Cedar Springs Road as a reference corner to true corner 17.

Thence North $6^{\circ} 20'$ West 14.500 chains with the Fell Estate and Belk-Simpson's line to corner 18.

Corner 18, Tract 164, set a nail and cap in the centerline of the pavement of the Cedar Springs Road. Marked and scribed new bearing trees. Also set a 1 1/4" diameter galvanized iron pipe with aluminum cap on the easterly right-of-way of Cedar Springs Road as a reference corner to true corner 18.

Thence North $1^{\circ} 31'$ West 8.624 chains with the Fell Estate and Belk-Simpson's line to corner 19.

Corner 19, Tract 164, set a 1 1/4" diameter galvanized iron pipe with aluminum cap in the apparent centerline of an old road bed. Marked and scribed bearing trees.

Thence North $42^{\circ} 57'$ West and following generally along an old use line 5.515 chains to corner 20.

Corner 20, Tract 164, set a 1 1/4" diameter galvanized iron pipe with aluminum cap alongside an iron pin and stone found marking corner. Corner witnessed by a 6" Pine Ξ facing corner. Marked and scribed bearing trees.

Thence North $80^{\circ} 50'$ West following a well marked line 4.794 chains to corner 21.

Corner 21, Tract 164, set a 1 1/4" diameter galvanized iron pipe with aluminum cap alongside an iron pin and stone found at the base of a 16" pine tree. Marked and scribed bearing trees.

Thence South $23^{\circ} 39'$ West following a well marked line 9.373 chains to corner 22.

(4-4)

Corner 22, Tract 164, common to corner 9, Tract 220s and C.A. corner 320 a standard Forest Service monument.

Thence North $50^{\circ} 34'$ West 25.200 chains as run by James R. Wall, R.L.S. 3129 in 1964, to corner 1, the place of beginning.

Forest Service Tracts and Tract 164 are shown on atlas sheet 3 of the Long Cane Ranger District.

LeRoy E. Lewis
LEROY E. LEWIS
Cadastral Surveyor