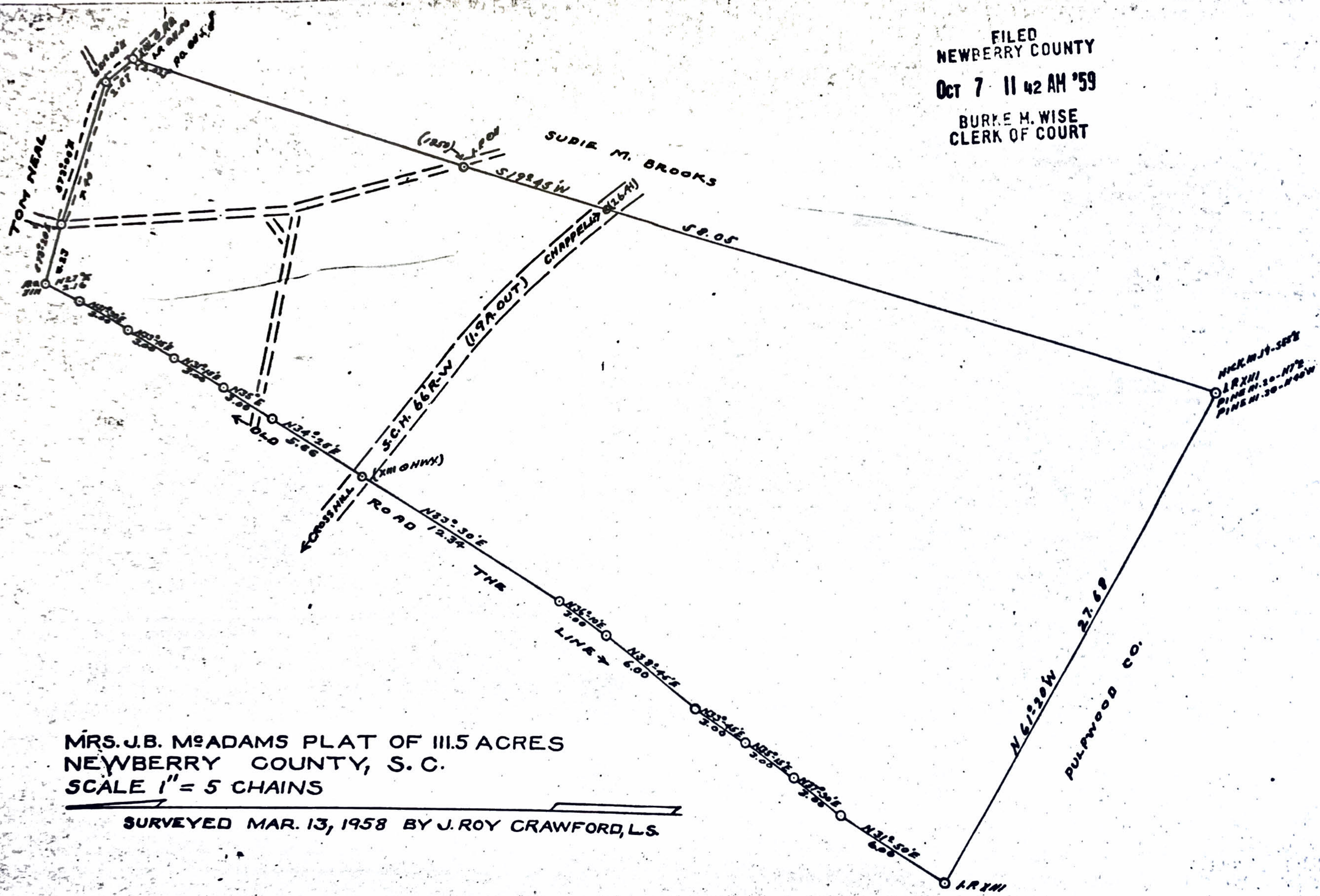


~~Huber~~ P-134

FILED
NEWBERRY COUNTY
OCT 7 11 42 AM '59
BURKE M. WISE
CLERK OF COURT



MRS. J. B. MADAMS PLAT OF 111.5 ACRES
NEWBERRY COUNTY, S. C.
SCALE 1" = 5 CHAINS

SURVEYED MAR. 13, 1958 BY J. ROY CRAWFORD, L.S.

Mrs. J. B. Madams - 111.5 acres

SCALE: 300 Feet To The Inch