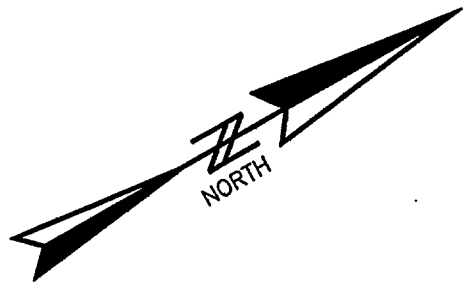


NUMBER	DIRECTION	DISTANCE
L1	S 71°27'29" E	237.18'
L2	N 77°52'01" E	137.28'
L3	S 27°20'06" W	110.23'
L4	S 31°52'02" W	198.00'
L5	S 33°37'02" W	198.00'
L6	S 31°37'02" W	198.00'
L7	S 35°22'02" W	122.39'
L8	S 35°22'02" W	75.61'
L9	S 36°32'02" W	198.00'
L10	S 34°07'02" W	198.00'
L11	S 35°37'02" W	198.00'
L12	S 37°52'02" W	198.00'
L13	S 65°00'00" W	82.00'
L14	N 10°06'33" E	198.18'

TRACT 2
 GROSS AREA = 9.35 AC.
 LESS HWY R/W = 0.96 AC.
 LESS CO. RD. R/W = 0.30 AC.
 NET AREA = 8.09 AC.

2009002768
 LARGE PLAT
 RECORDING FEES \$10.00
 PRESENTED & RECORDED.
 04-02-2009 10:16 AM

LYNN W. LANCASTER
 CLERK OF COURT
 LAURENS COUNTY, SC
 BY: TERESA ATWOOD CLERK
BK: PC A597
PG: 6 - 6

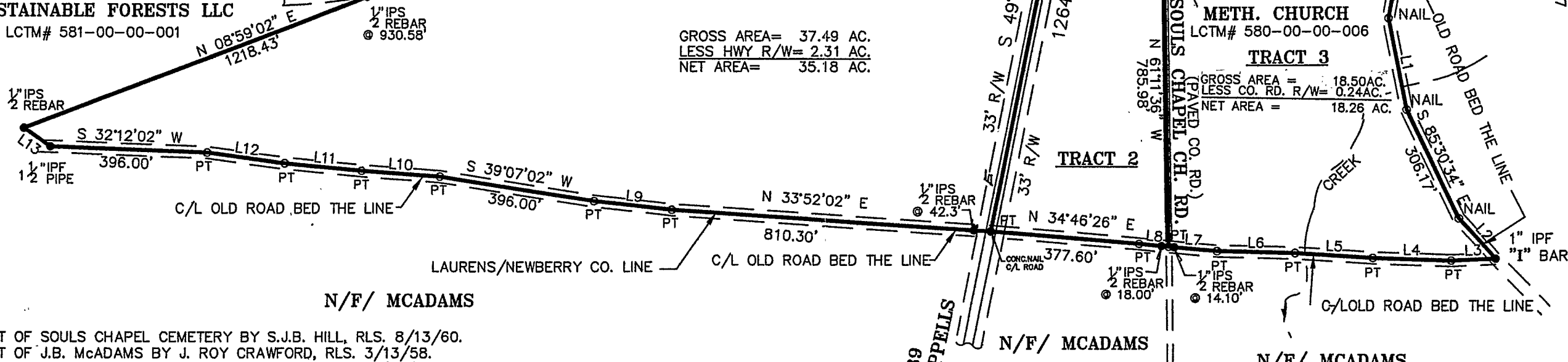


SUSTAINABLE FORESTS LLC
 LCTM# 581-00-00-001

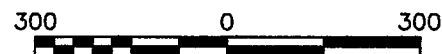
TRACT 1
 GROSS AREA = 37.49 AC.
 LESS HWY R/W = 2.31 AC.
 NET AREA = 35.18 AC.

SOULS CHAPEL METH. CHURCH
 LCTM# 580-00-00-006

TRACT 3
 GROSS AREA = 18.50 AC.
 LESS CO. RD. R/W = 0.24 AC.
 NET AREA = 18.26 AC.



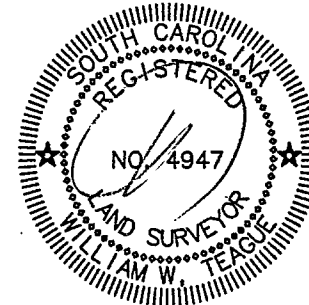
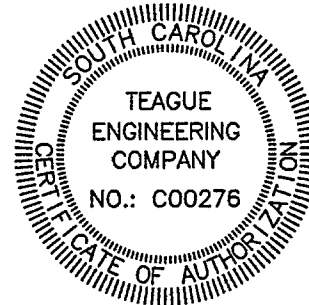
REF.: PLAT OF SOULS CHAPEL CEMETERY BY S.J.B. HILL, RLS. 8/13/60.
 PLAT OF J.B. McADAMS BY J. ROY CRAWFORD, RLS. 3/13/58.
 PLAT OF NANNIE O. WATKINS BY H.R. NETTLES, RLS. 8/16/33.
 PLAT OF FAIRFIELD FOREST PRODUCTS CO. MAP 8/31/56 PB 11 P1
 PLAT OF SOULS CHAPEL CHURCH (J.T. HOLLINGSWORTH BY SJB HILL RLS 1/9/79
 PLAT OF J.T. HILLINGSWORTH BY SJB HILL RLS 3/27/1979 & 8/1978.
 PLAT OF J. G. STEADMAN BY SJB HILL 12/7/1972. PB 31-54.
 DB. 38 PG 170



SURVEYED AT THE REQUEST OF
HEIRS OF NANNIE O. WATKINS

LOCATED AT INTERSEC OF S.C. 39 & COUNTY LINE RD.
 SOUTH OF CROSS HILL

LAURENS COUNTY STATE OF SOUTH CAROLINA
 DATE: 3/31/2005 SCALE: 1" = 300'
 DR. BY: RP DR. NO.: 05145
 REV.:



APPROVED BY: *[Signature]* RLS. 4/10/05
 S.C. REG. NO. 4947

TEAGUE ENGINEERING COMPANY
 CIVIL ENGINEERS
 LAND SURVEYORS
 LAURENS, SOUTH CAROLINA
 984-2035

MALCOLM & MARY LLOYD (PB. 31 PG 54)
 LCTM# 580-00-00-007

APPROVED BY:
 E 911 OFFICE

