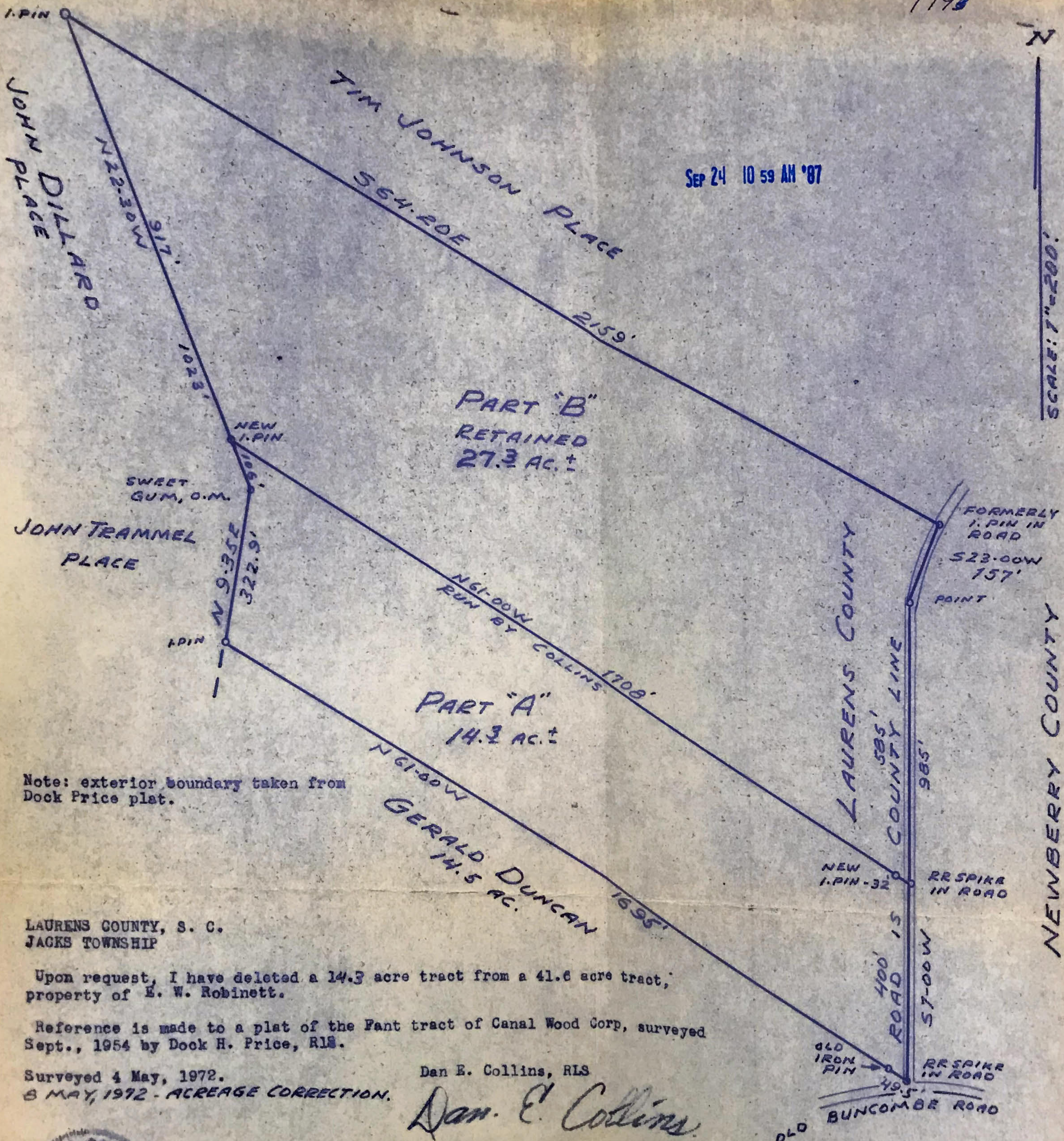


52/193

52/193



SEP 24 10 59 AM '87

SCALE: 1"=200'

Note: exterior boundary taken from Dock Price plat.

LAURENS COUNTY, S. C.  
JACKS TOWNSHIP

Upon request, I have deleted a 14.3 acre tract from a 41.6 acre tract, property of E. W. Robinett.

Reference is made to a plat of the Fant tract of Canal Wood Corp, surveyed Sept., 1954 by Dock H. Price, RLS.

Surveyed 4 May, 1972.  
8 MAY, 1972 - ACREAGE CORRECTION.

Dan E. Collins, RLS

*Dan E. Collins*



52/193