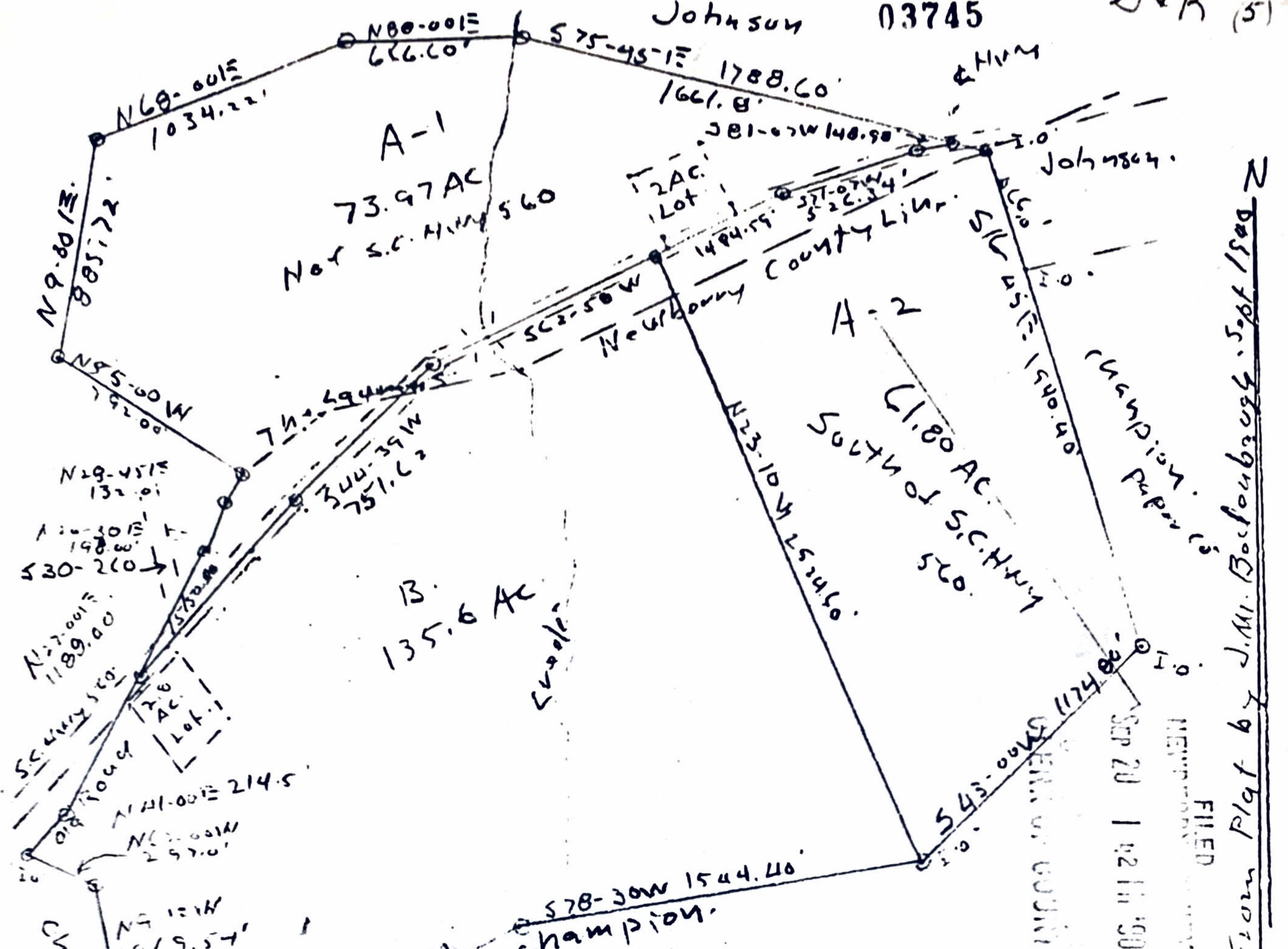


JUK (5)

Johnson 03745



DIVISION ESTATE OF  
MAMIE M. BISHOP

Newberry and Laurens Counties  
Across County Line at S30-26 949.  
Approx. 1/2 mile west of S36-96

Newberry County Tax Map # 63-1  
All outside Lines From plat by Jacob M. Bodenbaugh  
Sept. 1940 Also old Road county line courses  
Present S.C. Hwy 560 Surveyed and Division  
Line Calculated, Staked on ground.  
No Error of closure Calculated Area by BMD.

June 5, 1990 *Clara E. Johnson* L.S. 1373  
R13 Box 819 Newberry, S.C.

Filed this **SEP 20 1990**  
Book 1 Page 550  
Clerk of Court, Newberry Co., S.C.  
By *JACKIE D. BOWEN* (238)

FILED  
SEP 20 1 42 PM '90

