

THIS PROPERTY IS LOCATED IN: FLOOD ZONE S, SEE FRM PANEL 455413 0090 F MAP REVISION DATED APRIL 17, 1987.

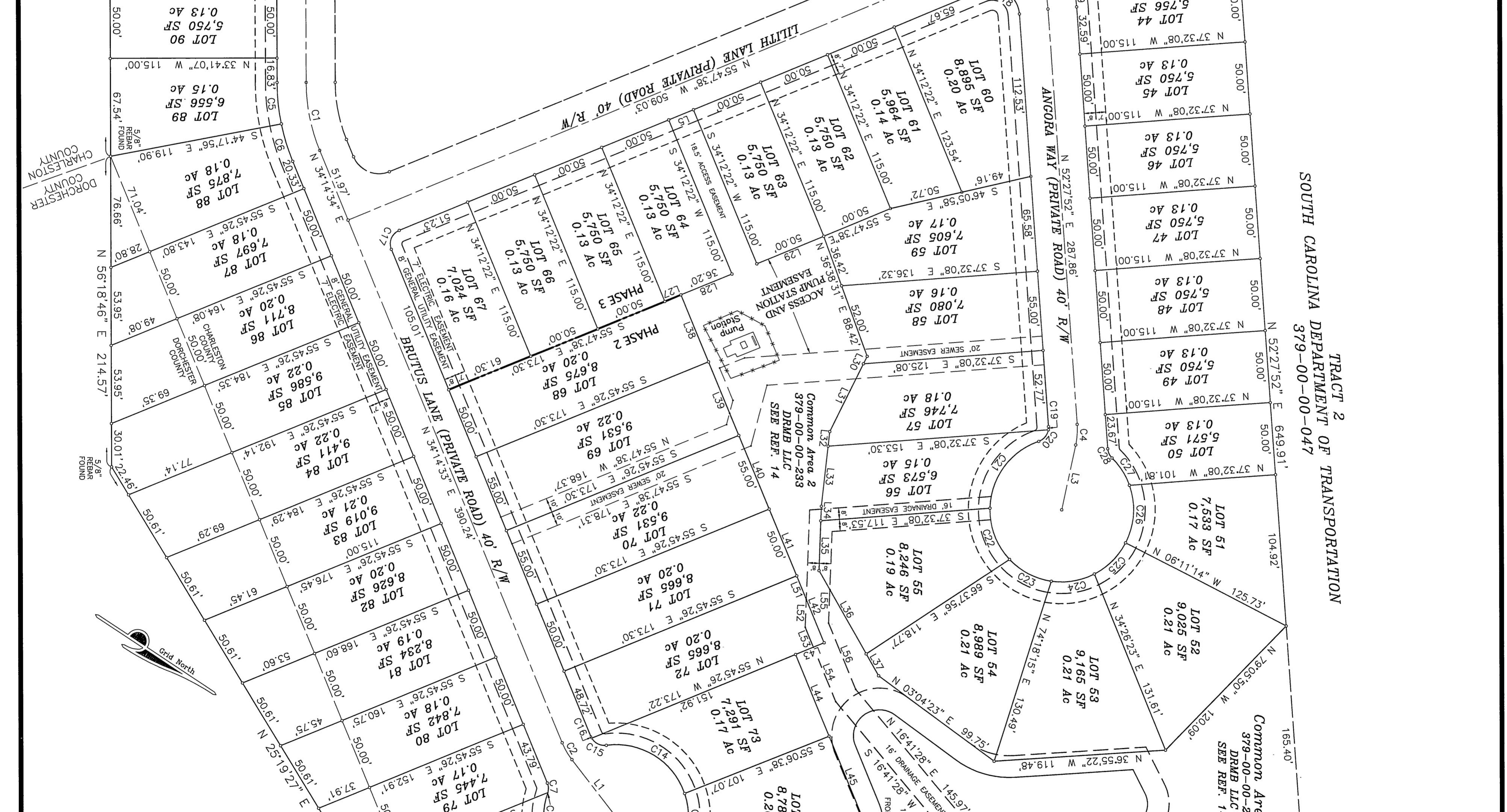
- NOTES: 1) AREA WAS DETERMINED BY THE COORDINATE METHOD. 2) DESCRIBE SHOWS OUTSIDE THE DERIVED BOUNDARY IS FOR... 3) THE PUBLIC RECORDS REFERENCED ON THIS PLAT ARE ONLY USED AND/OR NECESSARY FOR THE ESTABLISHMENT OF THE BOUNDARY OF THIS PROPERTY... 4) THIS PLAT HAS BEEN MADE FOR THE USE AND PURPOSE OF THE CLIENT ASSEMBLED AND CONTRACTED WITH TO PERFORM THE REQUESTED SERVICES... 5) DISTANCE SHOWN HEREON ARE HORIZONTAL, GROUND DISTANCES. 6) NO SUBSURFACE OR ENVIRONMENTAL INVESTIGATION OR SURVEYS WERE PERFORMED BY ASHLEY SURVEYING, INC. FOR THIS PLAT... 7) ALL PRIVATE ROADS (40' R/W) SHOWN HEREON ARE ALSO WATER & SEWER EASEMENTS FOR SCPW.

- REFERENCES: 1) PLAT BY R. DAVID BRANTON, DATED AUGUST 11, 1994. 2) RECORDED IN THE R.M.C. OFFICE OF CHARLESTON COUNTY IN PLAT BOOK EC, AT PAGE 825. 3) PLAT BY R. DAVID BRANTON, DATED JULY 1, 1994. 4) RECORDED IN THE R.M.C. OFFICE OF CHARLESTON COUNTY IN PLAT BOOK EN, AT PAGE 257. 5) PLAT BY ANDREW C. GILLETTE, DATED MARCH 18, 1994. 6) RECORDED IN THE R.M.C. OFFICE OF CHARLESTON COUNTY IN PLAT BOOK CP, AT PAGE 126. 7) PLAT BY PAUL C. LAWSON, JR., DATED DECEMBER 13, 2001. 8) RECORDED IN THE R.M.C. OFFICE OF CHARLESTON COUNTY IN PLAT BOOK DE, AT PAGE 172. 9) PLAT BY JEFFREY L. BROWN, DATED APRIL 21, 1991. 10) RECORDED IN THE R.M.C. OFFICE OF CHARLESTON COUNTY IN PLAT BOOK CD, AT PAGE 68. 11) PLAT BY A.L. GLEN, DATED JULY 19, 1946. 12) RECORDED IN THE R.M.C. OFFICE OF CHARLESTON COUNTY IN PLAT BOOK AT, AT PAGE 354. 13) PLAT BY R. DAVID BRANTON, DATED OCTOBER 1, 1993. 14) RECORDED IN THE R.M.C. OFFICE OF CHARLESTON COUNTY IN PLAT BOOK ON, AT PAGE 198. 15) DEED SHOWING A PERPETUAL EASEMENT FOR THE CONSTRUCTION, MAINTENANCE AND REPAIR OF A 10' WIDE ASPHALT AND/OR LUMBER FEESTRAN TRAIL RECORDED IN THE R.M.C. OFFICE OF CHARLESTON COUNTY IN DEED BOOK 517, AT PAGES 768, 769 AND 770. 16) PLAT BY PAUL C. LAWSON, JR., REVISED DECEMBER 2, 2006. 17) RECORDED IN THE R.M.C. OFFICE OF CHARLESTON COUNTY IN PRELIMINARY PLAT OF THE PINES OF GAHAGAN BY SINCLAIR AND ASSOCIATED, LLC DATED MARCH 21, 2006. 18) PLAT BY PAUL C. LAWSON, JR., DATED NOVEMBER 21, 2005. 19) RECORDED IN THE R.M.C. OFFICE OF CHARLESTON COUNTY IN PLAT BOOK OK, AT PAGE 18. 20) PLAT BY PAUL C. LAWSON, JR., DATED MAY 29, 2007. 21) RECORDED IN THE R.M.C. OFFICE OF CHARLESTON COUNTY IN PLAT BOOK EK, AT PAGE 682. 22) PLAT BY PAUL C. LAWSON, JR., DATED FEBRUARY 2, 2011. 23) RECORDED IN THE R.M.C. OFFICE OF CHARLESTON COUNTY IN PLAT BOOK OL, AT PAGE 14. 24) PLAT BY PAUL C. LAWSON, JR., DATED JUNE 7, 2010. 25) RECORDED IN THE R.M.C. OFFICE OF CHARLESTON COUNTY IN PLAT BOOK LI, AT PAGE 0185.

Table with 15 columns: LINE, LENGTH, BEARING, CURVE LENGTH, RADIUS, DELTA ANGLE, TANGENT, CH. BEARING, CHORD. Contains detailed survey data for various points and lines.

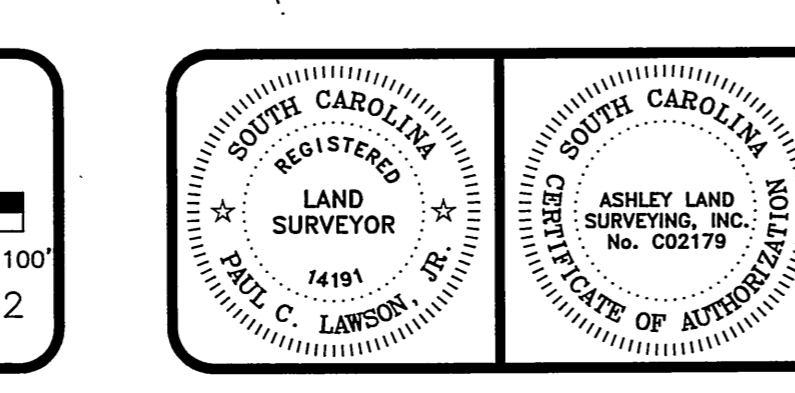
THIS 379-00-00-066 THIS PROPERTY IS ZONED PUD DENSITY - 40' R/W PRIVATE MINIMUM CUL-DE-SAC FRONTAGE - 25' MINIMUM TYPICAL LOT SIZE - 50' X 115' MINIMUM LOT SIZE - 5,500 SF TYPICAL PAD SIZE - 40' X 85' SMALLEST LOT IS (5,750 SF) SETBACKS FRONT 15' REAR 10' SIDE 5'

MAINTENANCE OF THE ROADS AND DRAINAGE SYSTEMS IN THE PINES OF GAHAGAN WILL BE MAINTAINED BY THE DEVELOPER AND/OR HOA AS STATED IN THE 'DECLARATION OF COVENANTS, EASEMENTS, CHARGES, LIENS AND RESTRICTIONS FOR THE PINES AT GAHAGAN' RECORDED IN CHARLESTON COUNTY R.M.C. BOOK 0084, PAGE 510 AND AS STATED IN THE PLANNED UNIT DEVELOPMENT DOCUMENT AS APPROVED BY SUMMERVILLE TOWN COUNCIL. THE TOWN OF SUMMERVILLE DOES NOT ASSUME ANY OWNERSHIP OR RESPONSIBILITY FOR THE ROADS OR DRAINAGE SYSTEMS DESIGNED TO ENJOY PROPER MAINTENANCE AND SAFETY OF THE ROADS AND THE STORMWATER SYSTEM AS STATED IN THE NFDPS FURNISH BY THE APPROPRIATE BODY.



Tract 2 of Department of Transportation South Carolina 379-00-00-047. Common Area 2 DBMB LLC SEE REF. 14. Includes title block with date (January 18, 2013), surveyor (Paul C. Lawson), and project details.

I HEREBY STATE TO THE BEST OF MY KNOWLEDGE, INFORMATION AND BELIEF, THE SURVEY SHOWN HEREON WAS MADE IN ACCORDANCE WITH THE REQUIREMENTS OF THE MINIMUM STANDARDS MANUAL FOR THE PRACTICE OF LAND SURVEYING IN SOUTH CAROLINA... DECEMBER 06, 2012



FINAL SURVEY FOR LOTS 68-99 PHASE 2 AND LOTS 43-67 PHASE 3 THE PINES AT GAHAGAN SUBDIVISION OWNED BY THE PINES AT GAHAGAN LLC LOCATED IN THE TOWN OF SUMMERVILLE CHARLESTON COUNTY, SOUTH CAROLINA

ASHLEY ASHLEY LAND SURVEYING, INC. 306 SANGAREE PARKWAY SUMMERVILLE, SC 29488 TELEPHONE: (843) 871-4168 FAX: (843) 871-9538