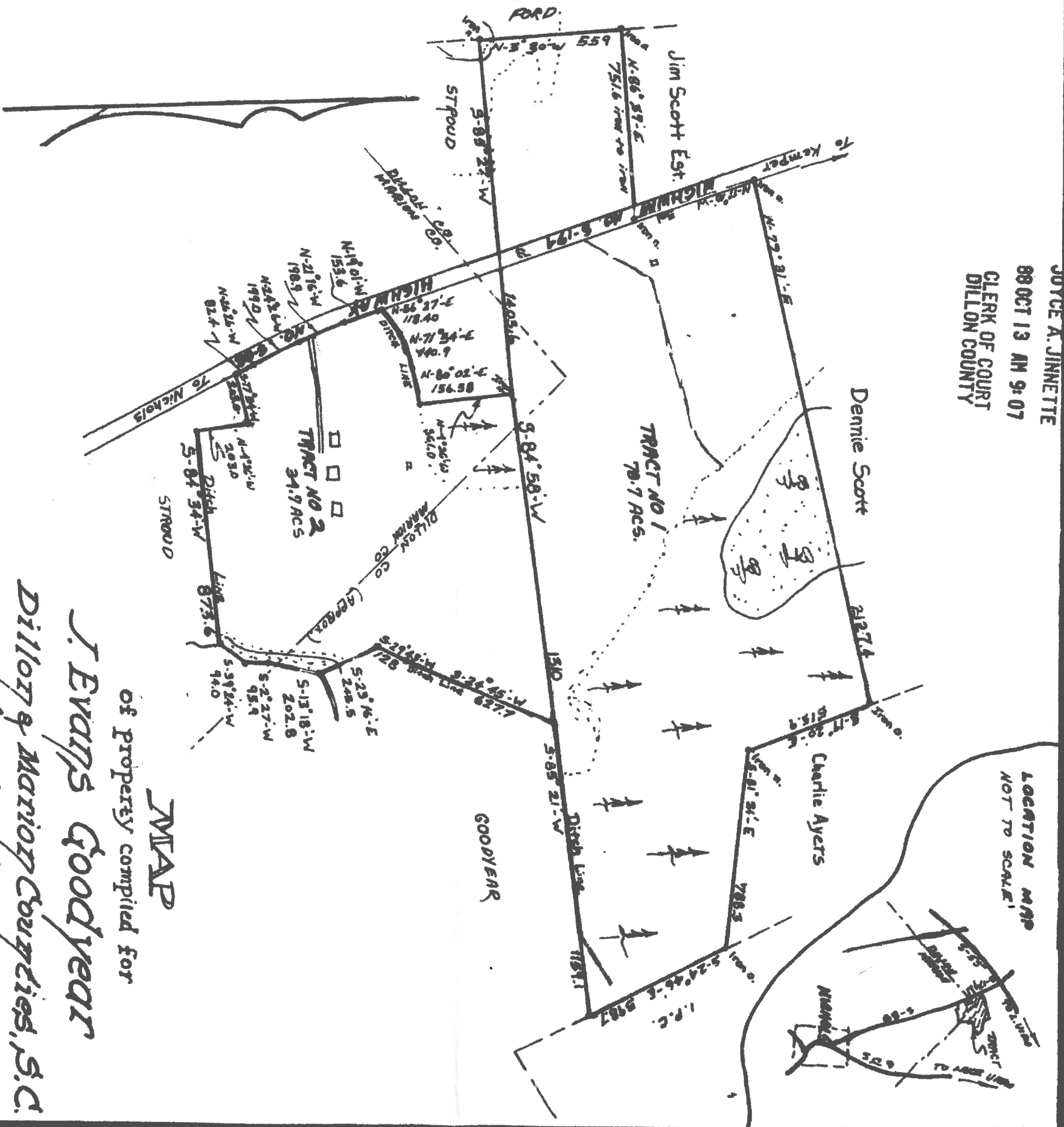


FILED
 JOYCE A. JINNETTE
 88 OCT 13 AM 9:07
 CLERK OF COURT
 DILLON COUNTY



COMPILED FROM SURVEYS MADE BY ME, MAY 1995,
 FEB. 1999, JAN 1998 & DEC. 1987, ALSO MAP OF
 PROPERTY SURVEYED BY J.E. GOODYEAR BY JOHNSON &
 ROBERTS, C.E.'S APR. 24, 1957.
 GEORGE W. SMITH, RLS SC# 3978

MAP
 of property compiled for
J. EVANS GOODYEAR
 Dillon & Marion Counties, S.C.
 Contend: 115.4 Acres
 December 1987
 Smith Survey Co.
 Mullins, S.C.
 MS20-27, MS21-29, MS50-1, R-5-67

18/901

PB 18
 201