

FISCAL YEAR 2018-19 BUDGET OUTLOOK

PRESENTED TO

SOUTH CAROLINA SENATE FINANCE COMMITTEE

February 20, 2018

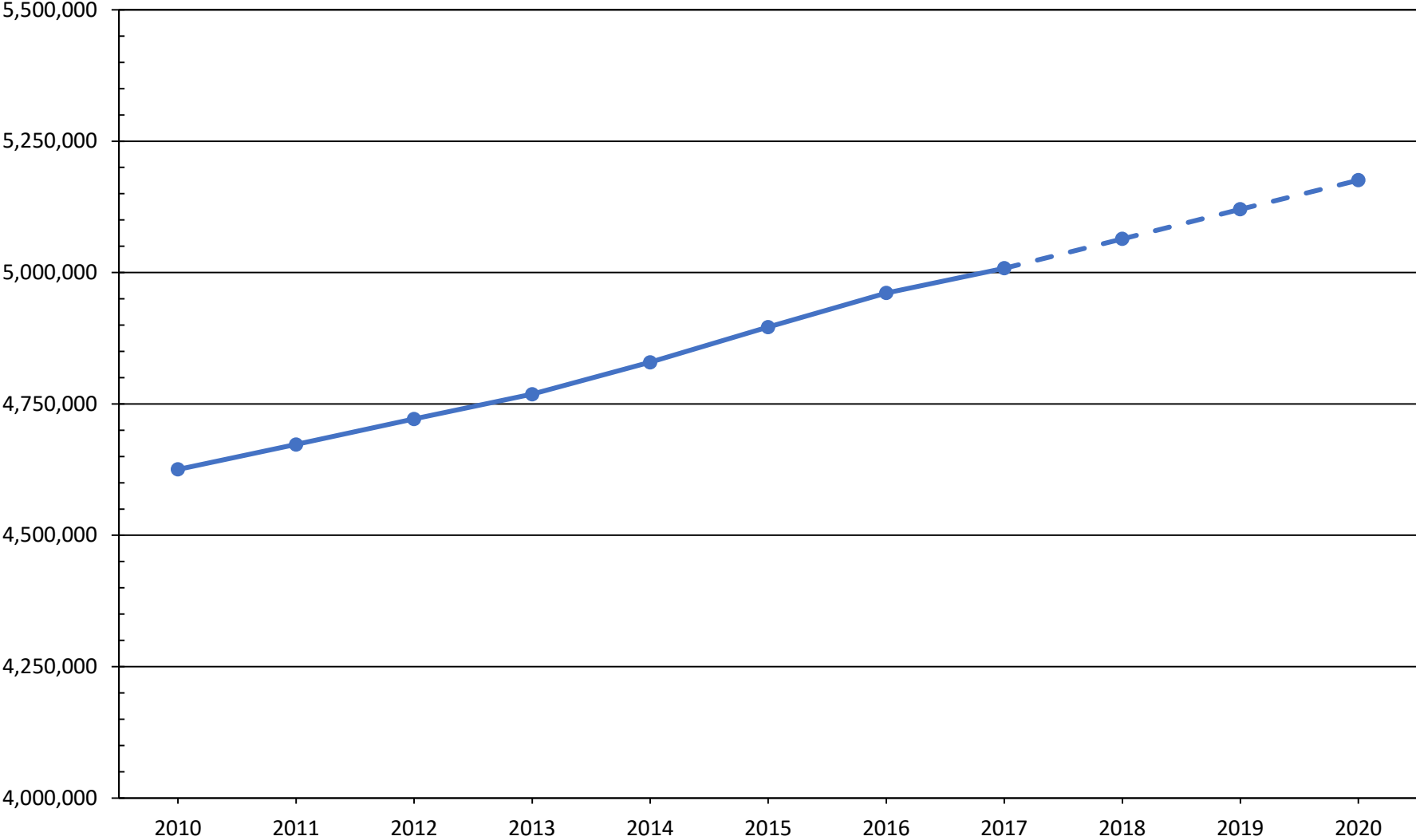


South Carolina Revenue and Fiscal Affairs Office
1000 Assembly St.
Rembert Dennis Building, Suite 421
Columbia, SC 29201
(803) 734-2265
www.rfa.sc.gov

population



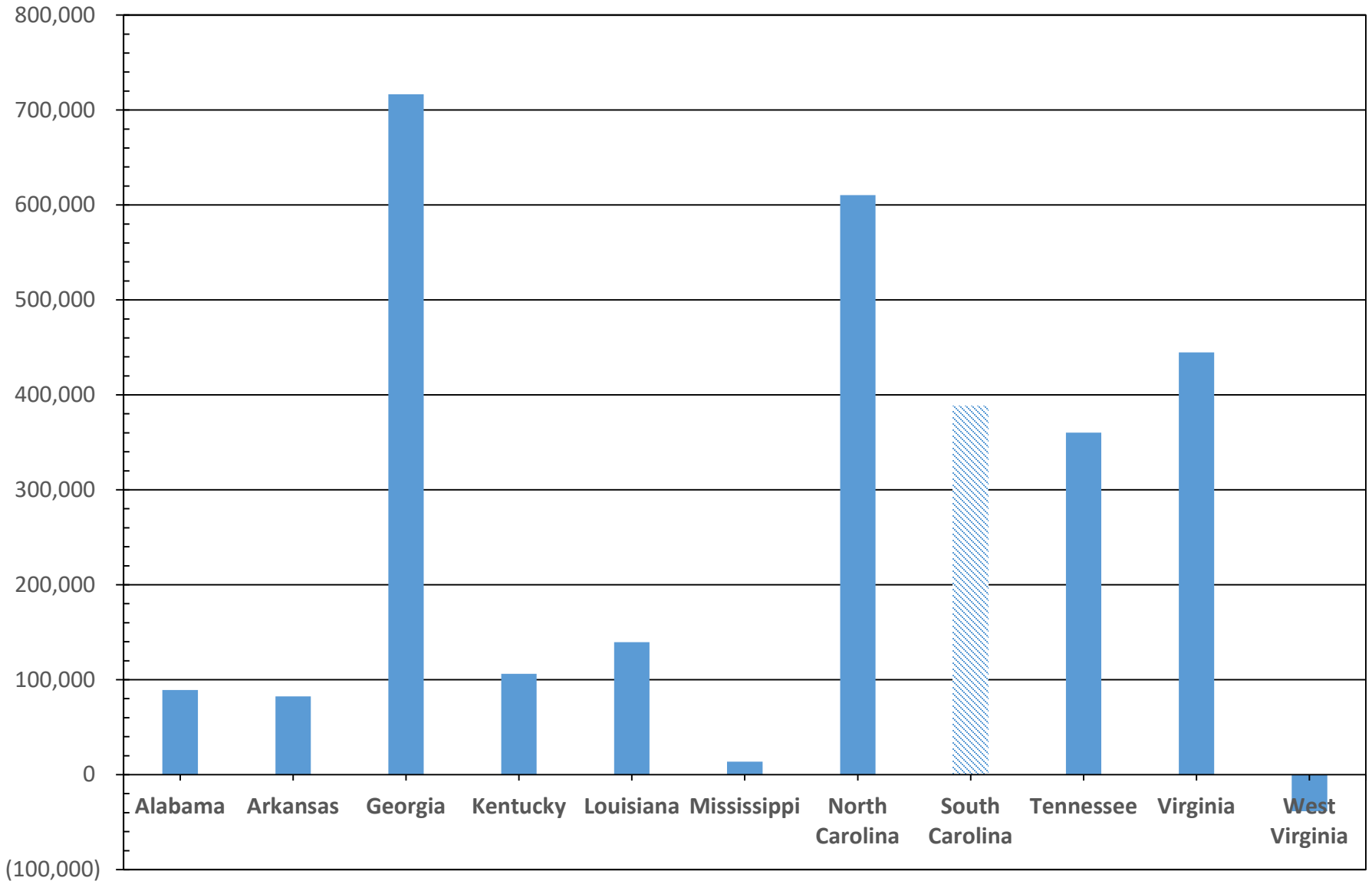
SOUTH CAROLINA POPULATION 2010 TO 2020



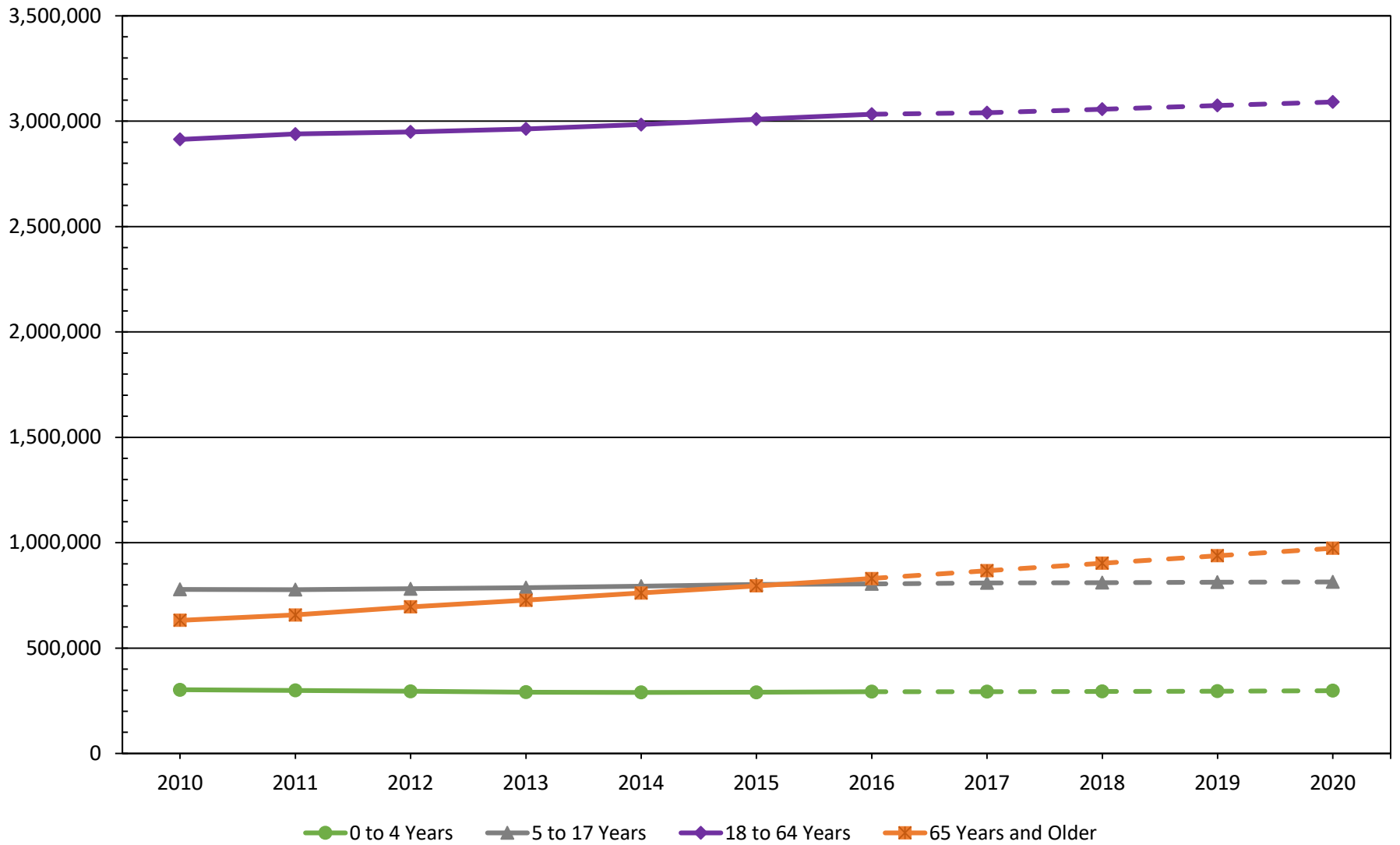
Note: US Census Bureau, population estimates 2010 to 2016; Revenue and Fiscal Affairs Office, population projections 2017 to 2020

POPULATION GROWTH

Southeastern States 2010 - 2017

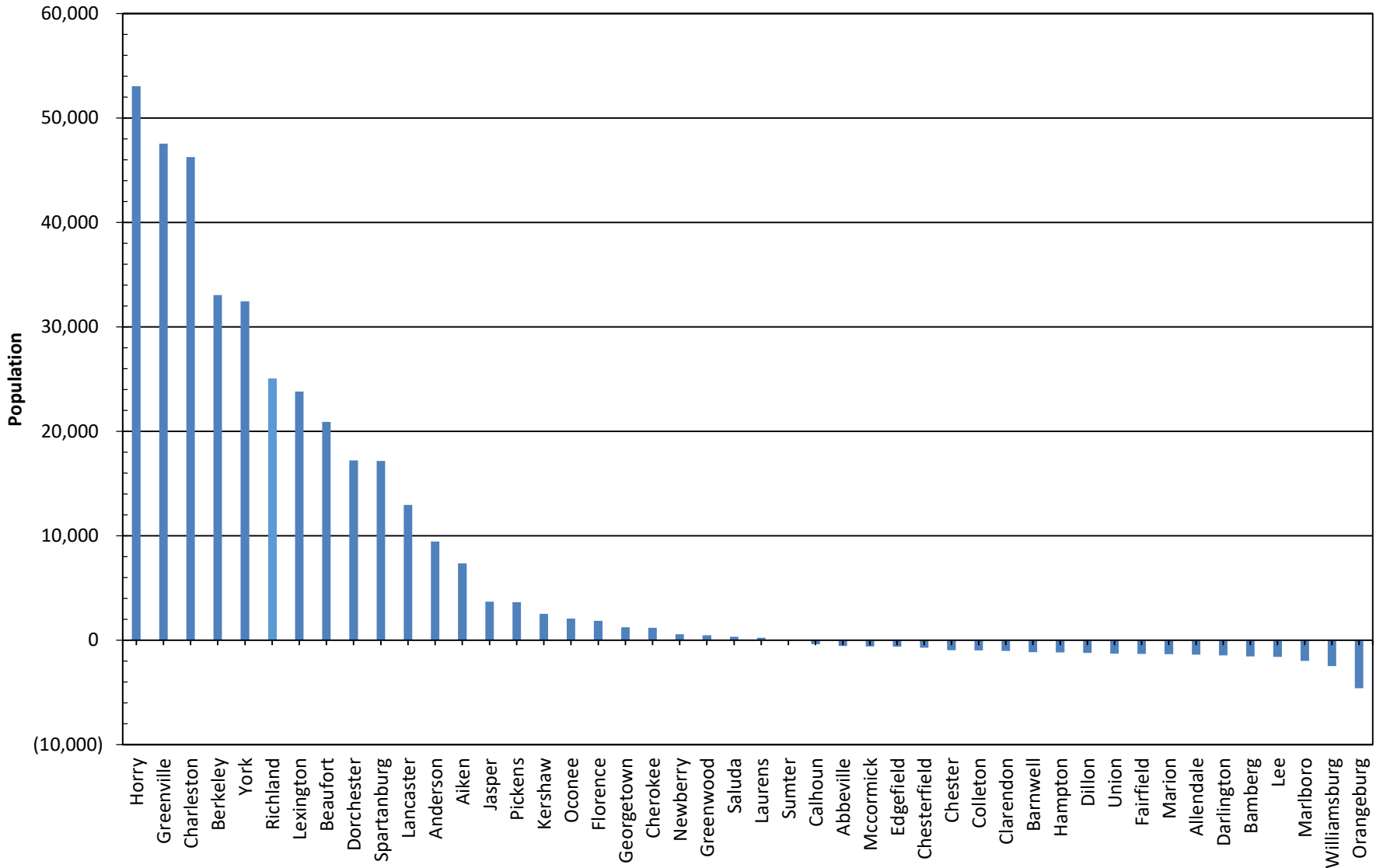


SOUTH CAROLINA POPULATION BY AGE GROUP 2010 TO 2020

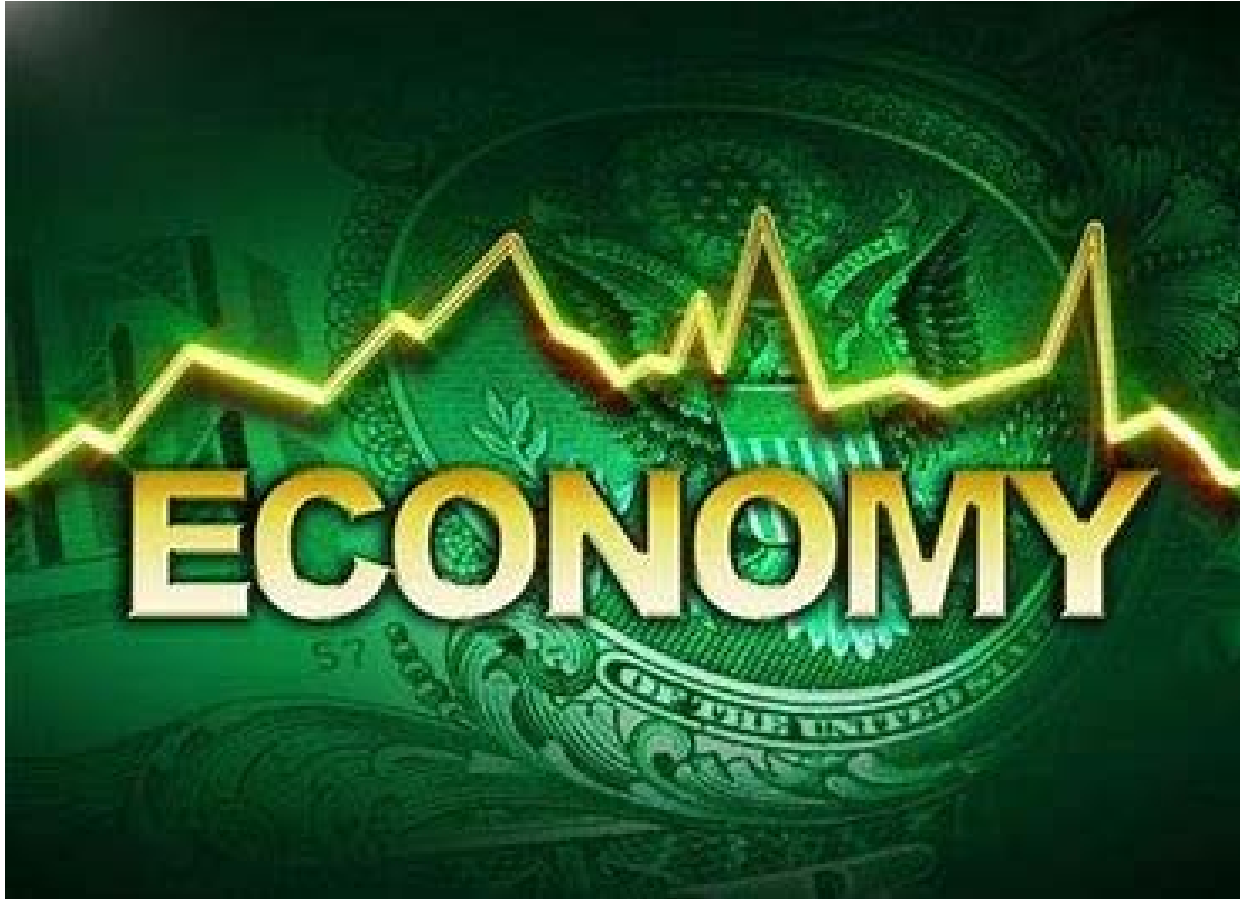


Note: US Census Bureau, population estimates 2010 to 2016; Revenue and Fiscal Affairs Office, population projections 2017 to 2020

ESTIMATED CHANGE IN COUNTY POPULATION 2010 Census vs 2016 Estimates

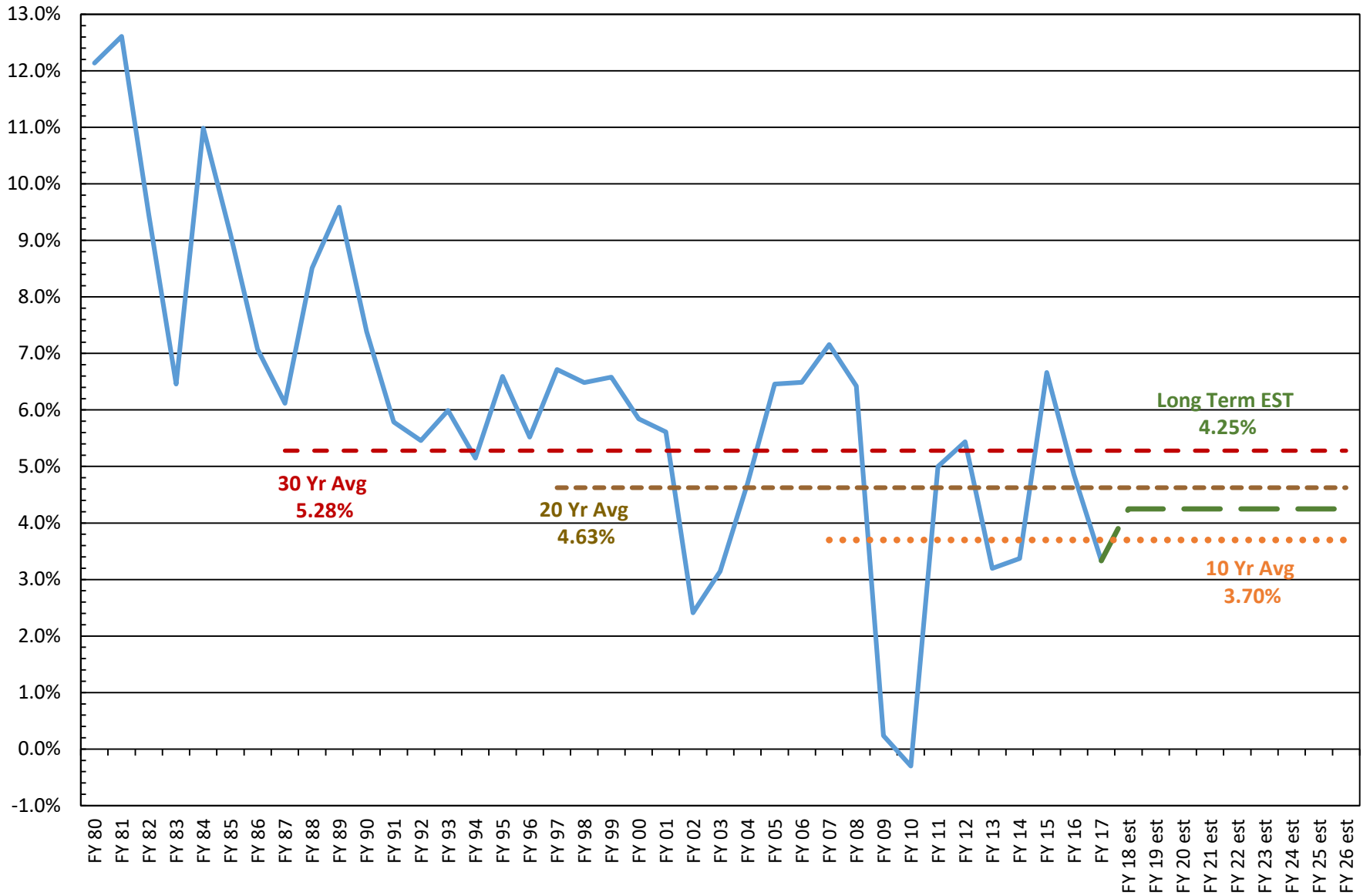


Note: Population figures are based on 2010 U.S. Census Bureau data and 2016 U.S. Census population estimates.



SC PERSONAL INCOME FY GROWTH RATES

Actuals, Estimates, and Averages

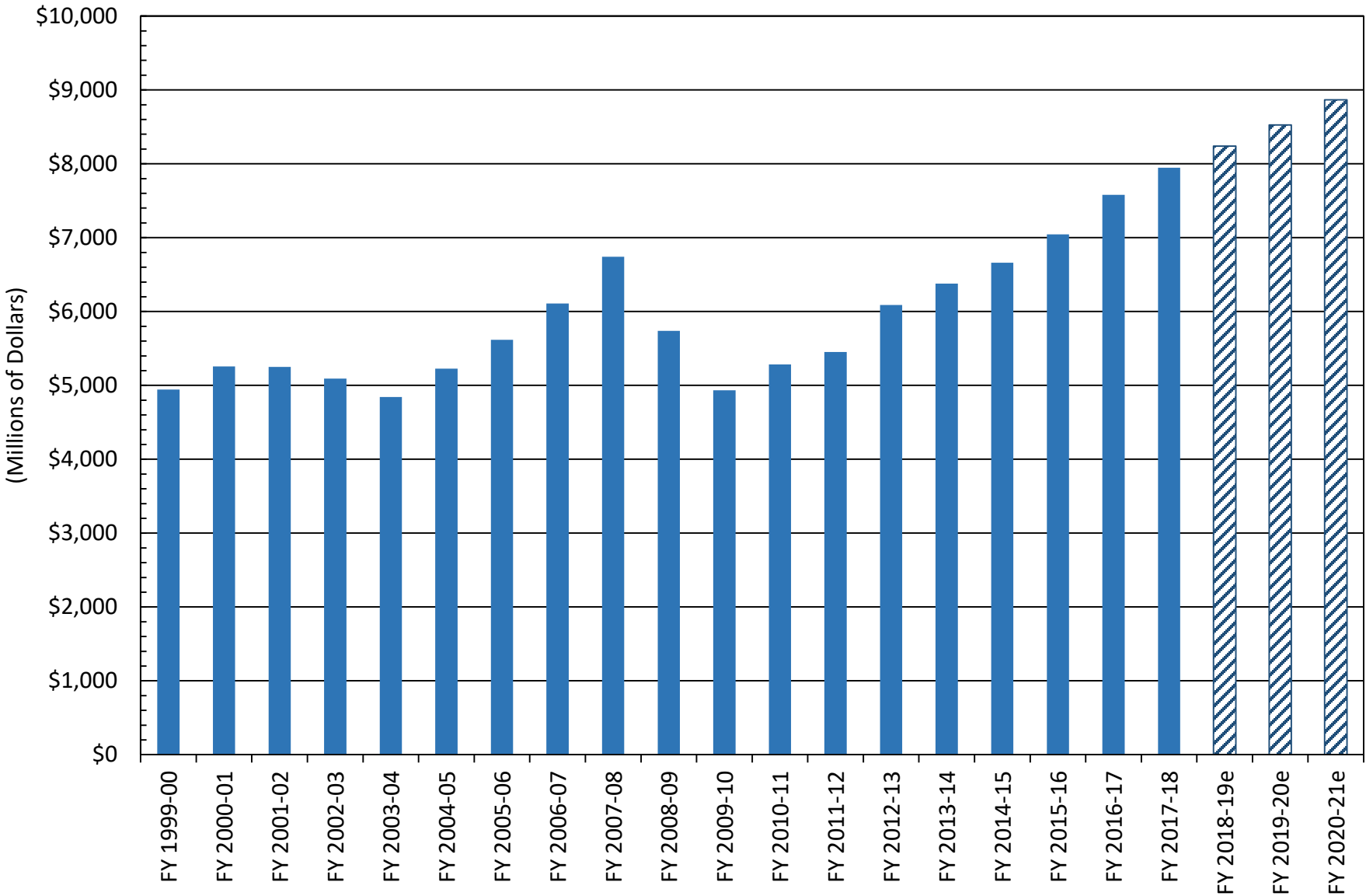




GENERAL FUND

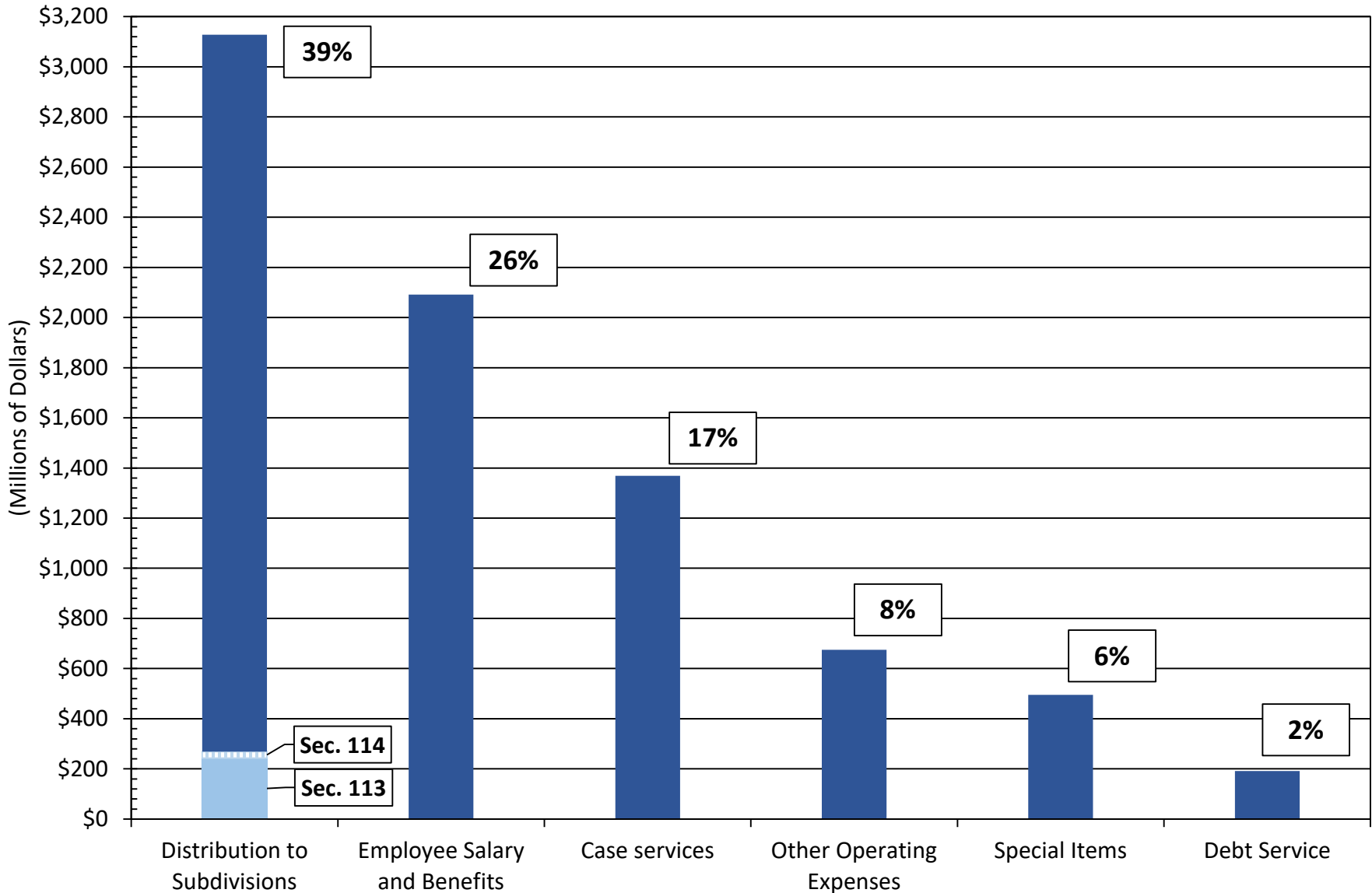
GENERAL FUND

Appropriation Act Revenue and Estimates

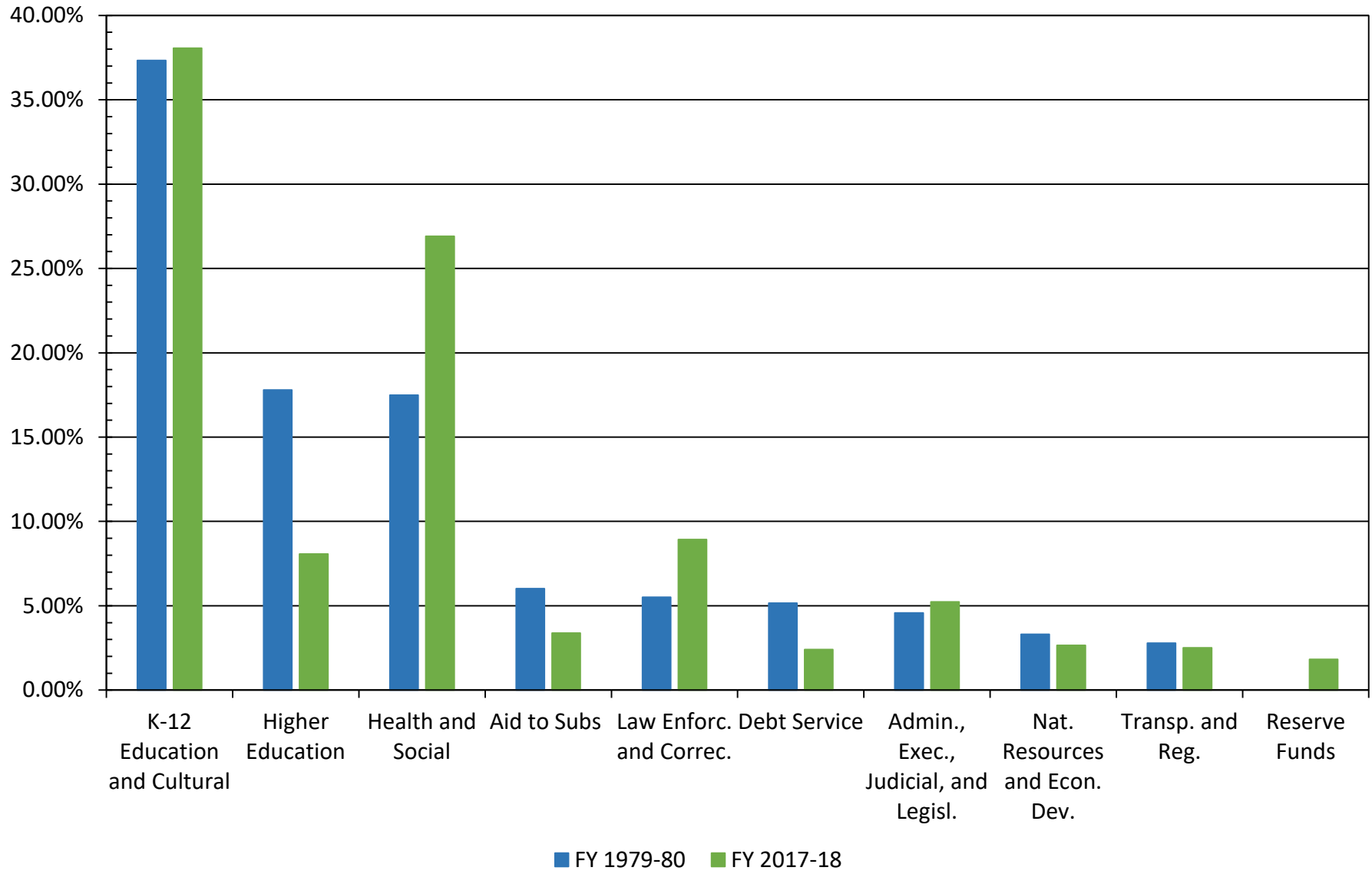


*Adjusted appropriations account for allocations and mid-year budget cuts. Source: RFA, JCS, 1/8/2018

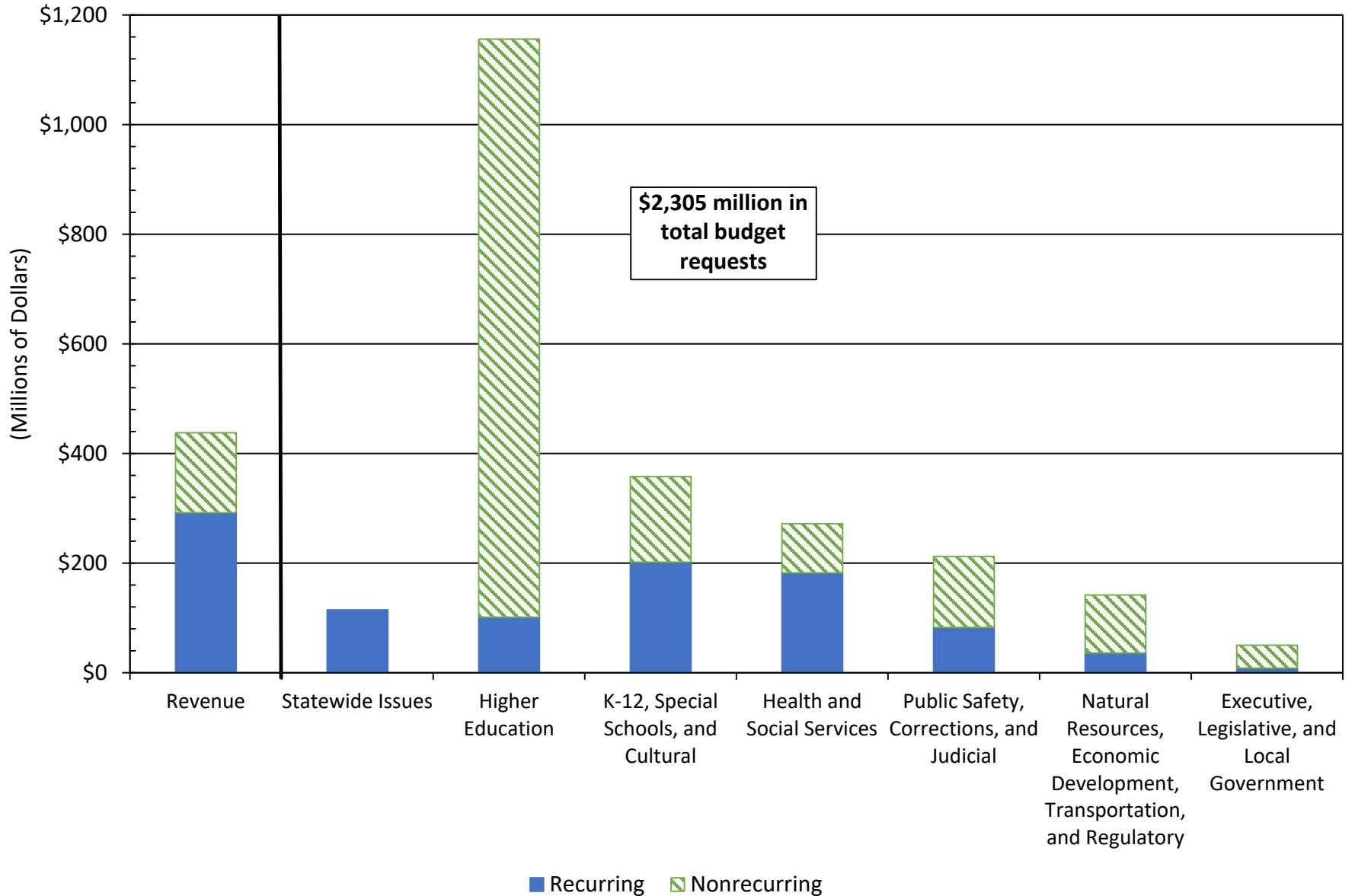
GENERAL FUND APPROPRIATIONS BY MAJOR BUDGET CATEGORY FY 2017-18



PERCENT OF GENERAL FUND APPROPRIATIONS BY FUNCTIONAL GROUP FY 1979-80 and FY 2017-18



FY 2018-19 BUDGET REQUESTS BY FUNCTIONAL AREA



FY 2018-19 GENERAL FUND CAPITAL RESERVE FUND OUTLOOK

Unallocated General Fund Revenue \$291.9 million

Major Issues

Reserve Funds \$21.9 million

Retirement Contribution – 1% \$32.4 million

State Health Plan \$60.6 million

EFA – inflation and enrollment \$60.5 million

Medicaid \$41.1 million

Scholarships – LIFE, HOPE, Palmetto Fellows \$19.8 million

Real ID \$6.0 million

DSS Child Support System/Lawsuit \$45.2 million

FY 2018-19 GENERAL FUND OUTLOOK

Other Items

Other Items

• Local Government Fund at 4.5%	\$118.6 million
• EFA Full Funding	\$499.6 million
• State Employee Pay Increase 2%	\$38.4 million
• Higher Education – 2% increase	\$12.8 million
• Other Health Programs – 2% increase	\$16.4 million
• Corrections/Law Enforcement – 2% increase	\$15.9 million
• All other areas – 2% increase	\$24.7 million
 Capital Reserve Fund	 \$145.4 million



**FY18-19 Executive Summary of Agency Budget Requests
Totals by Functional Area**

Functional Area	General Fund			FTE
	Recurring	Nonrecurring	Total General Fund	
K-12 Education, Special Schools, and Cultural	201,717,763	156,008,309	357,726,072	46.00
Higher Education and Technical Schools	101,477,299	1,054,794,070	1,156,271,369	183.20
Health and Social Services	182,107,248	90,031,158	272,138,406	314.00
Economic Development and Natural Resources	30,577,962	93,500,600	124,078,562	100.00
Judicial, Law Enforcement and Criminal Justice	82,581,559	129,690,047	212,271,606	770.00
Transportation and Regulatory	5,649,207	11,956,240	17,605,447	19.00
Legislative, Executive and Local Government	8,611,443	41,632,502	50,243,945	53.00
Grand Total	612,722,481	1,577,612,926	2,190,335,407	1485.20