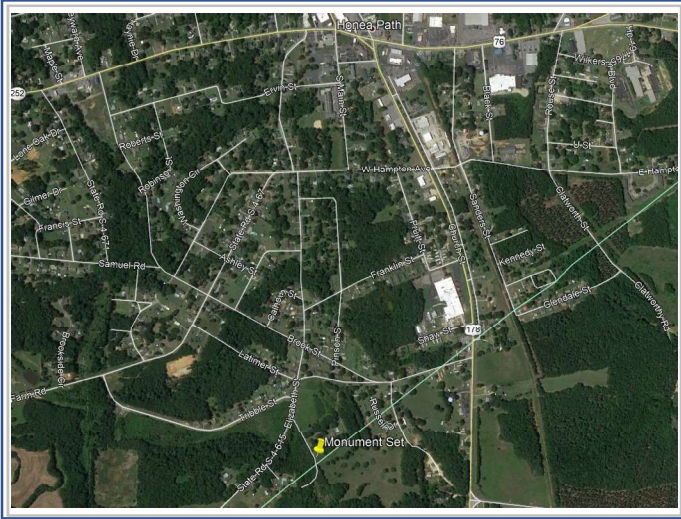


South Carolina Revenue and Fiscal Affairs

South Carolina Geodetic Survey

County Boundary Program

Supplemental Monumentation on County Boundary



Description of Monument Set: #8 REBAR WITH CAP SET

Date of Monumentation: JULY 2019

County Boundary: ABBEVILLE/ ANDERSON

Nearest Junction: US 76 and US 178 in Honea Path

Location: N: 948498.25 ft E: 1579777.29 ft

Datum: NAD83 (2011)

LAT: 34° 25' 56.85582" LON: 82° 23' 37.41148"

Tie Monuments (Designation and coordinates on Re-establishment Survey):

1" PIPE (N= 937,724.69 ift E= 1,565,613.56 ift) / Mag Nail w/ Washer (N=956,419.07 ift E= 1,590,190.60 ift)

Note: Supplemental monumentation may be placed for property owners, businesses, State, County and Municipal Government entities that request additional monumentation on a re-established County Line that has met the requirements of SC Code of Law in §27-2-105. Supplemental monumentation is established for the purpose of clarifying, to the public, the location of the county boundary. Supplemental monuments will be established by the South Carolina Geodetic Survey or its contractors and placed on the County Boundary.