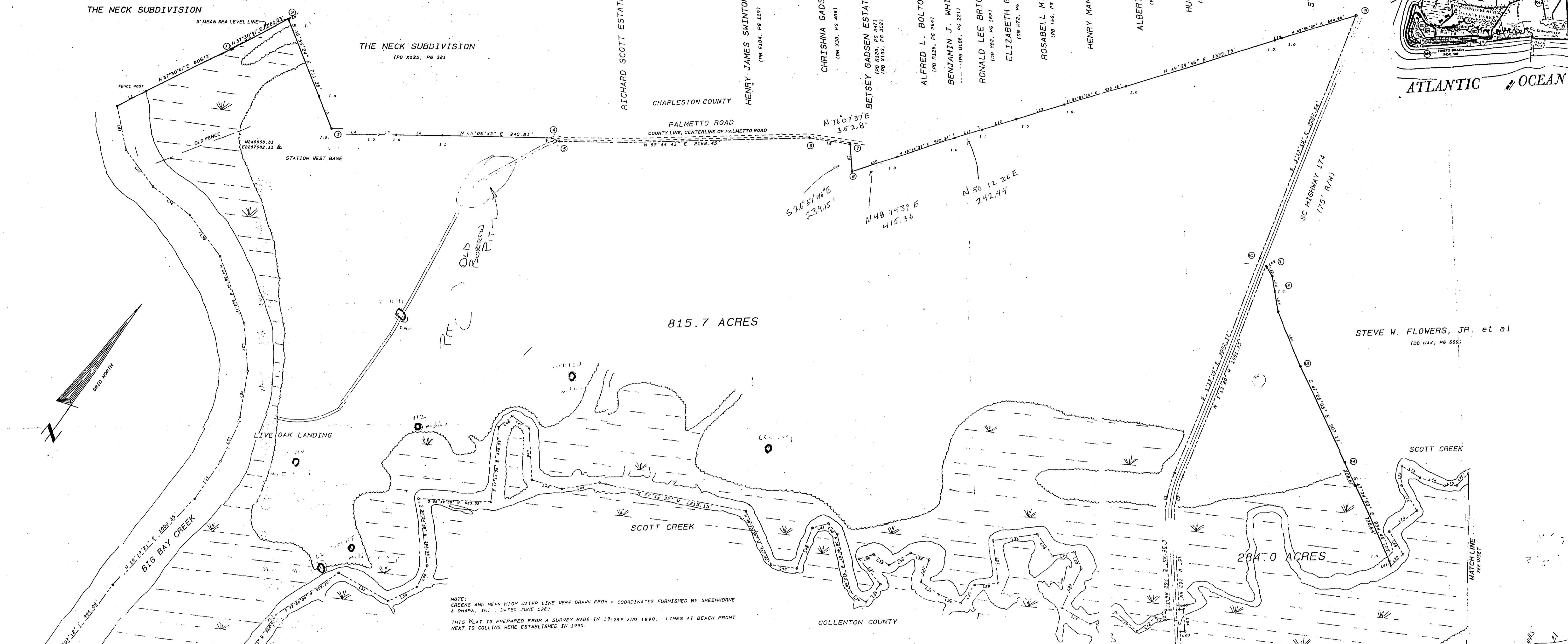


1/3/92



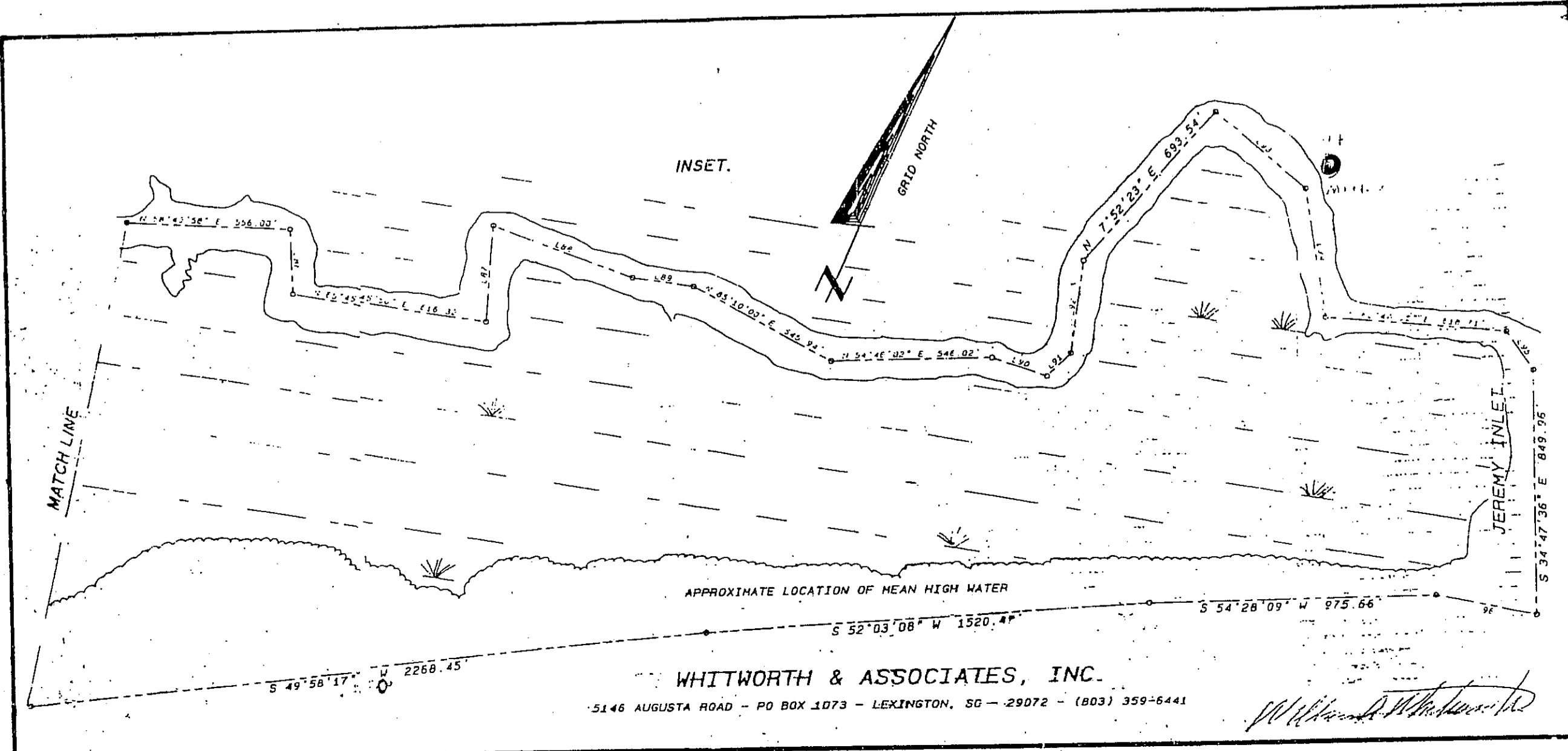
815.7 ACRES

284.0 ACRES

NOTE: CREEKS AND MEAN HIGH WATER LINE WERE DRAWN FROM "COORDINATES FURNISHED BY GREENHORN & OHARA, INC." DATE: DEC 1987. THIS PLAT IS PREPARED FROM A SURVEY MADE IN 1993 AND 1990. LINES AT BEACH FRONT NEXT TO COLLINS WERE ESTABLISHED IN 1990.

CURVE	ARC	RADIUS	CHORD LENGTH	CHORD BEARING
C1	448.14	1010.00	444.47	S 13° 52' 55" E
C2	214.86	935.00	211.72	N 13° 52' 55" W

LINE	BEARING	DISTANCE	LINE	BEARING	DISTANCE
L1	N 37° 50' 21" E	279.31	L31	N 72° 59' 51" W	189.89
L2	S 46° 53' 55" E	111.63	L32	N 72° 41' 09" W	202.16
L3	S 46° 43' 58" E	300.59	L33	S 67° 40' 00" W	174.49
L4	N 65° 29' 18" E	427.43	L34	S 36° 39' 52" W	214.40
L5	N 65° 29' 34" E	150.04	L35	N 78° 26' 41" W	163.77
L6	N 65° 30' 33" E	389.83	L36	S 48° 28' 24" W	129.63
L7	S 87° 59' 30" E	70.00	L37	S 63° 47' 49" E	283.09
L8	N 78° 07' 34" E	359.80	L38	S 15° 56' 43" W	196.58
L9	S 26° 51' 40" E	239.13	L39	N 80° 43' 18" W	155.03
L10	S 26° 51' 40" E	215.36	L40	N 62° 34' 26" W	119.42
L11	N 48° 12' 26" E	240.44	L41	S 49° 21' 15" W	139.70
L12	N 50° 28' 34" E	300.76	L42	S 2° 24' 27" W	376.43
L13	N 50° 35' 52" E	440.36	L43	S 74° 13' 48" W	2722.45
L14	N 60° 32' 20" E	64.36	L44	S 27° 08' 41" W	337.01
L15	S 63° 21' 22" W	37.50	L45	S 83° 59' 08" W	287.47
L16	S 26° 30' 35" E	80.00	L46	N 26° 09' 49" W	446.78
L17	S 26° 30' 35" E	92.00	L47	N 76° 31' 01" W	175.89
L18	S 26° 30' 35" E	92.00	L48	S 25° 53' 13" W	151.14
L19	S 26° 30' 35" E	197.65	L49	S 1° 55' 04" W	282.06
L20	S 26° 30' 35" E	254.57	L50	S 40° 26' 37" W	275.94
L21	N 84° 22' 10" W	159.99	L51	N 63° 59' 05" W	481.68
L22	N 84° 22' 10" W	265.38	L52	S 47° 43' 35" W	366.52
L23	N 3° 39' 43" E	375.77	L53	N 19° 57' 20" E	408.32
L24	N 46° 02' 30" W	159.59	L54	N 9° 01' 50" E	391.40
L25	S 55° 44' 45" W	197.20	L55	N 0° 17' 38" E	390.00
L26	N 59° 24' 30" W	234.80	L56	N 16° 12' 09" W	397.80
L27	S 27° 39' 25" W	371.14	L57	N 30° 35' 48" W	400.80
L28	S 61° 44' 20" W	196.47	L58	N 51° 43' 34" W	434.88
L29	S 15° 18' 22" W	195.99	L59	N 77° 41' 13" W	403.28
L30	S 87° 23' 03" W	197.21	L60	N 60° 43' 15" W	398.68



WHITWORTH & ASSOCIATES, INC.
5146 AUGUSTA ROAD - PO BOX 1073 - LEXINGTON, SC - 29072 - (803) 359-6441

HENRY & DURWOOD COLLINS
CHARLESTON CO. SC

BOUNDARY SURVEY FOR
S. C. DEPT. OF PARKS, RECREATION & TOURISM
OF
EDISTO STATE PARK
COLLENTON COUNTY, SOUTH CAROLINA

SCALE: 1" = 400'

AUGUST 29, 1990

I HEREBY CERTIFY TO THE BEST OF MY KNOWLEDGE, INFORMATION, AND BELIEF THAT THIS PLAT IS PREPARED FROM A TRAVERSE RUN TO THIRD ORDER, CLASS 1, FROM STATION PAVILION TO STATION WEST BASE. THE ERROR OF CLOSURE BASED ON THE INVERSE OF THE STATION COORDINATES IS 1:60,000.

REFERENCE: MAP OF LANDS OF EDISTO BEACH, INC., TRACED FROM COMPILED BY R. F. McLELLAN, DATED MAY 11, 1926, BY H. H. JENNINGS, DATED JANUARY 1, 1934 AND RECORDED IN PLAT BOOK 6 AT PAGE 191 IN CHARLESTON COUNTY.

WILLIAM A. WHITWORTH, SC RLS #3440

