

INDEX OF SHEETS

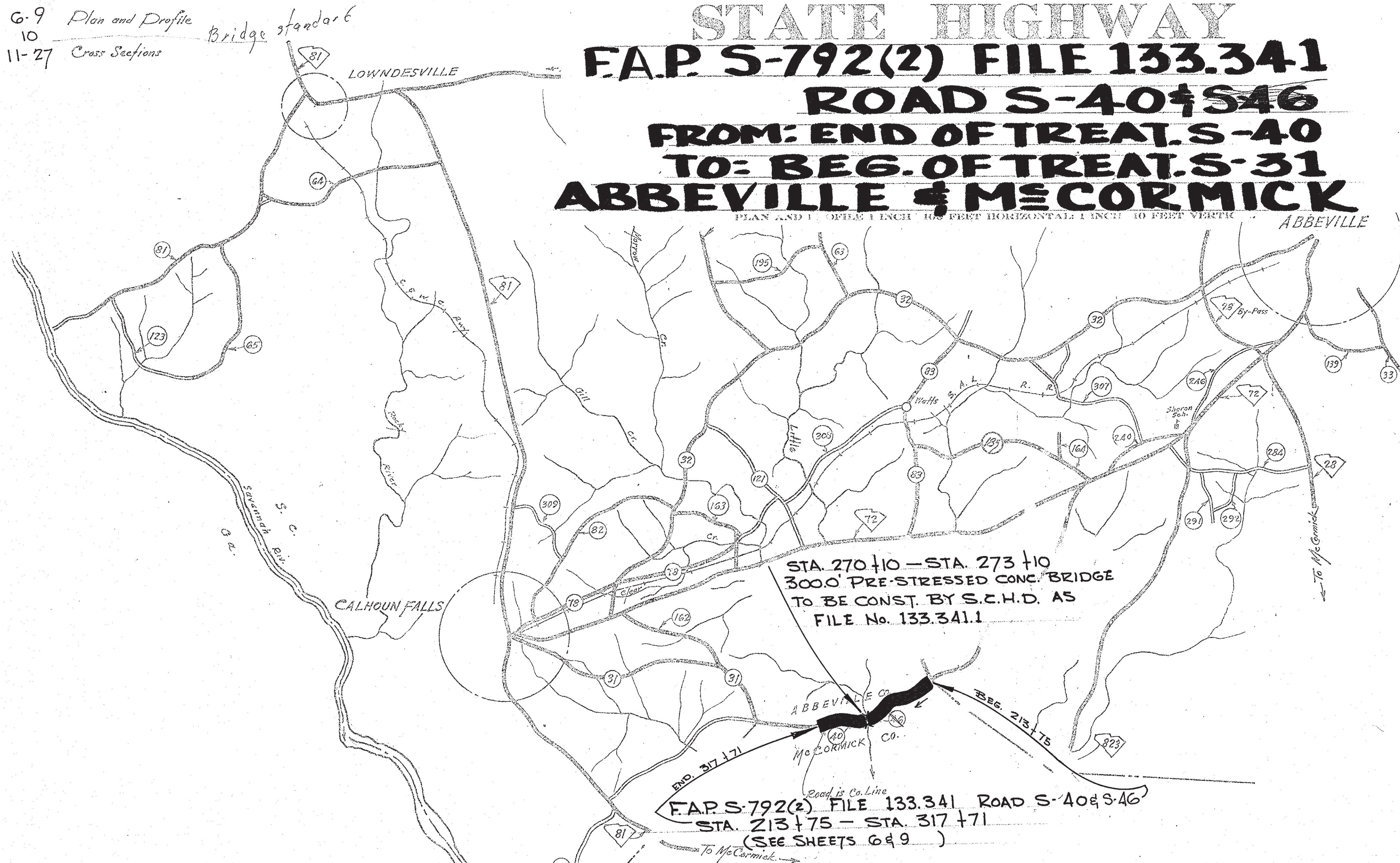
- Sheet No. 1 Title Sheet
- " 2 Typical Sections of Improvement
- " 3 Intersections Std.
- " 4 Super-elevation "
- " 5 State Fed. Hwy. Const. Sign
- " 6-9 Plan and Profile
- 10 Cross Sections
- 11-27 Cross Sections

Bridge standard

SOUTH CAROLINA  
STATE HIGHWAY DEPARTMENT  
COLUMBIA

PLAN AND PROFILE OF PROPOSED  
STATE HIGHWAY  
F.A.P. S-792(2) FILE 133.341  
ROAD S-40 & S-46  
FROM: END OF TREAT S-40  
TO: BEG. OF TREAT S-31  
ABBEVILLE & McCORMICK

PLAN AND PROFILE 1 INCH = 100 FEET HORIZONTAL 1 INCH = 10 FEET VERTICAL



STA. 270+10 - STA. 273+10  
3000' PRE-STRESSED CONC. BRIDGE  
TO BE CONST. BY S.C.H.D. AS  
FILE No. 133.341.1

F.A.P. S-792(2) FILE 133.341 ROAD S-40 & S-46  
STA. 213+75 - STA. 317+71  
(SEE SHEETS 6 & 9)

LAYOUT

Scale: 1 inch = 5280 feet

Net Length of Roadway	1.912	Miles
Net Length of Bridges	0.057	Miles
Net Length of Project	1.969	Miles
Length of Exceptions	-	Miles
Gross Length of Project	1.969	Miles

Equalizes in Stationing

NONE

Note: All workmanship and material on this project to conform with South Carolina State Highway Department Standard Specifications for Highway Construction dated 1964

J. M. S.

FED. ROAD DIST. NO.	STATE	COUNTY	FILE NO.	F. A. PROJ. DIST.	ROAD NO.	SHEET NO.	TOTAL SHEETS
3	S. C.	ABBEVILLE McCORMICK	133.341	S792(2)	S-40 S-46	1	27

SUMMARY OF ESTIMATED QUANTITIES

	QUANTITY	UNIT
<b>EARTHWORK</b>		
Clearing and Grubbing within Roadway	NEC.	
Clearing and Grubbing of Borrow and Material Pits	2.0	ACRES
Unclassified Excavation	29,624	C.Y.
Overhaul	41,488	C.Y.H.M.
Selected Material for Shoulders	1220	C.Y.
<b>BASE COURSE</b>		
Earth Type Base Course (GROUND SURF. MAT.)	3966	C.Y.
Seawalling, Mixing, Remixing, Shaping and Reshaping	23,757	M.S.Y.
<b>SURFACING</b>		
Bituminous Surfacing (DOUBLE TREAT.) Type 1 or 2	22,636	S.Y.
<b>STRUCTURES</b>		
15" R.C. CULVERT PIPE (CLASS III)	20	L.F.
18" R.C. CULVERT PIPE (CLASS III)	560	L.F.
24" R.C. CULVERT PIPE (CLASS III)	52	L.F.
48" R.C. CULVERT PIPE (CLASS III)	76	L.F.
15" R.C. RELIAD PIPE CULVERT	20	L.F.
<b>INCIDENTALS</b>		

CONVENTIONAL SIGNS

State Line	Trolley Poles
County Line	Power Poles
City or Town Limits	Telephone or Telegraph Poles
Property Line	Marsh
Fence	Trees
Retaining Wall	Brush
Existing Road	Stumps
Proposed Road	Buildings
Railroad	Bridge
Levee or Embankment	Concrete Box Culvert
Guard Rail	Pipe Culvert
Point of Intersection (P. I.)	Drop Inlet and Culvert
	Hub on Center Line

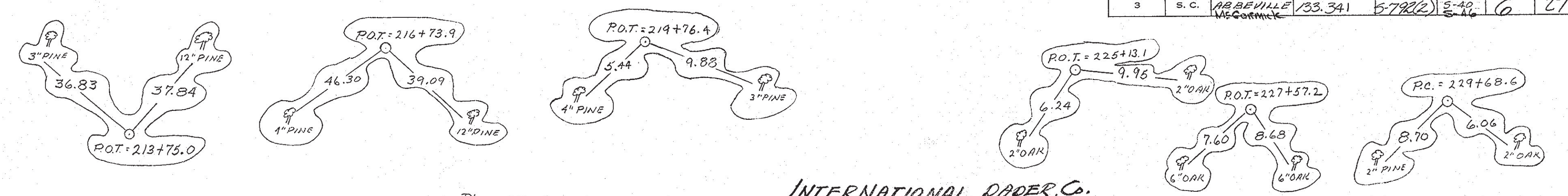
LEGEND

PROPOSED PROJECT	PAY	TR.
OTHER ROADS		

APPROVED: *[Signature]* 10/24/66  
STATE HIGHWAY ENGINEER DATE

DEPARTMENT OF COMMERCE  
BUREAU OF PUBLIC ROADS  
RECOMMENDED FOR APPROVAL:  
DISTRICT ENGINEER DATE  
APPROVED:  
DIVISION ENGINEER DATE

FED. ROAD DIV. NO.	STATE	COUNTY	ROUTE NO.	PROJECT NO.	ROUTE NO.	SHEET NO.	TOTAL SHEETS
3	S. C.	ABBEVILLE	133, 341	57922	5-40	6	27



STA. 213+75.0 RD 40.46 File 133-341 -  
 STA. 213+75.0 RD. 40. DKT. 1.283  
 F.A.P. 5-792 (1) COMPLETED

Survey Sta. 213+75 Beg.  
 File No. 133-341 F.A.P. 5-792E  
 Road 5-40 S. 40

PLACE ONE (1) STATE FEDERAL HIGHWAY  
 CONSTRUCTION SIGN

INTERNATIONAL PAPER, Co.  
 BY: V. PRES.  
 D. 3. 20. 67

INTERNATIONAL PAPER, Co.  
 BY: V. PRES.  
 D. 3. 20. 67

PLAN	DATE	BY
SURVEYED		
PLOTTED		
GRADES CHECKED		
STRUCTURE NOTATIONS CHECKED		
NOTE BOOK NO.		
RT. OF WAY CHECKED		

PROFILE	DATE	BY
SURVEYED		
PLOTTED		
GRADES CHECKED		
STRUCTURE NOTATIONS CHECKED		
NOTE BOOK NO.		

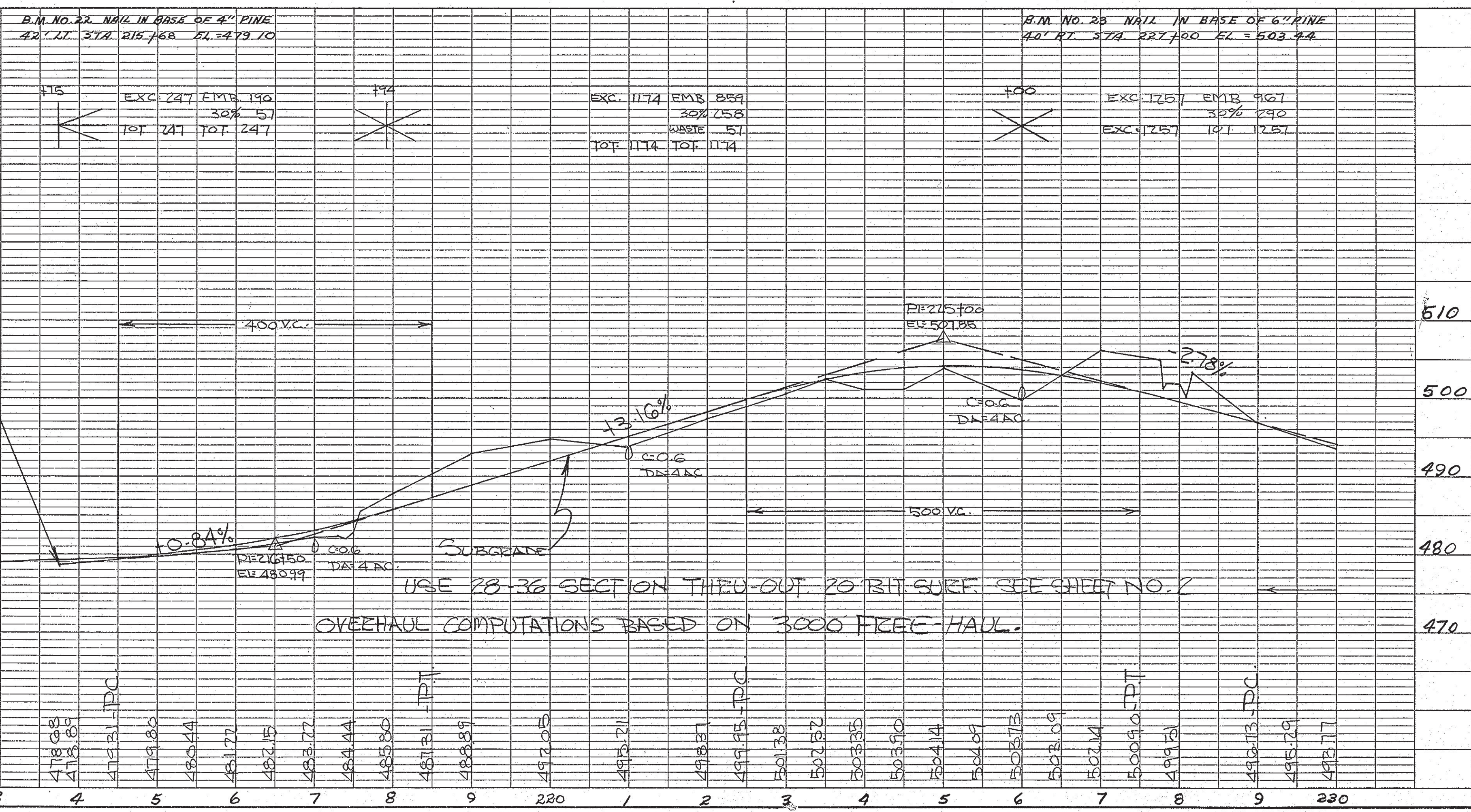
NOTE with

Changes involving increased cost of project or changes in alignment must be specifically authorized by the State Highway Engineer. District Engineer may authorize minor alterations not in conflict with the Standard Practices of the Department and not involving increases in cost. Forward information on any change in alignment to the Columbia office as soon as the revision is completed.

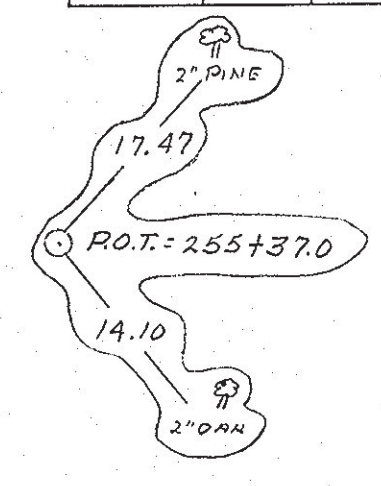
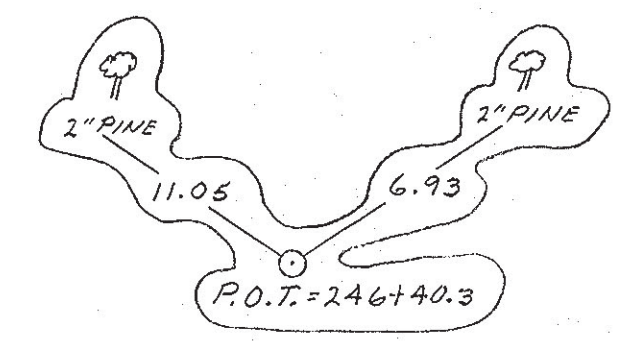
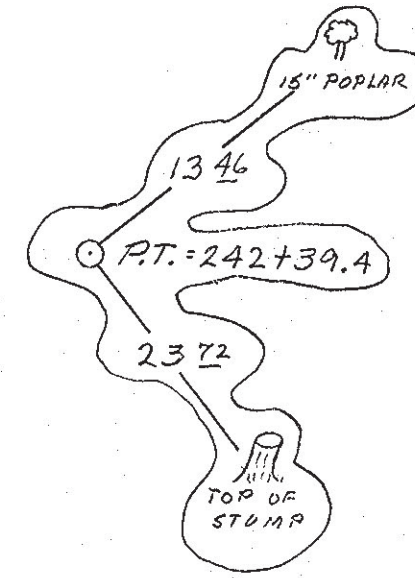
All curves are to be super-elevated for a design speed of 45 M.P.H. as shown on Sheet No. 4 by revolving about the center line.

The following quantities are not shown in detail on the plans but are included in the summary of estimated quantities and may be varied during construction as directed by the Engineer.

- Overhaul 31,778 C.Y.H.M. for Base Course Material.
- 9,760 C.Y.H.M. for Shoulder Material.
- Earth Type Base Course 40 C.Y. for Intersections and Drives.
- Scarifying Mixing Etc. 0.200 M.S.Y. for Intersections and Drives.
- Bituminous Surfacing 200 S.Y. for Intersections and Drives.



FED. ROAD DIV. NO.	STATE	COUNTY	FILE NO.	PROJECT NO.	RD NO.	SHEET NO.	TOTAL SHEETS
3	S. C.	ABBEVILLE	133-301	57920	5-40	7	27

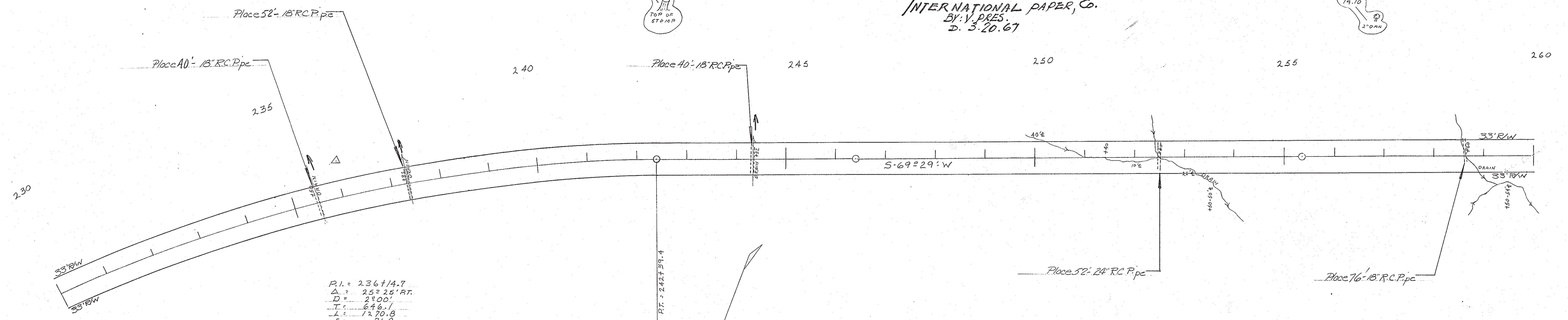


INTERNATIONAL PAPER, Co.  
BY V. PRES.  
D. 3.20.67

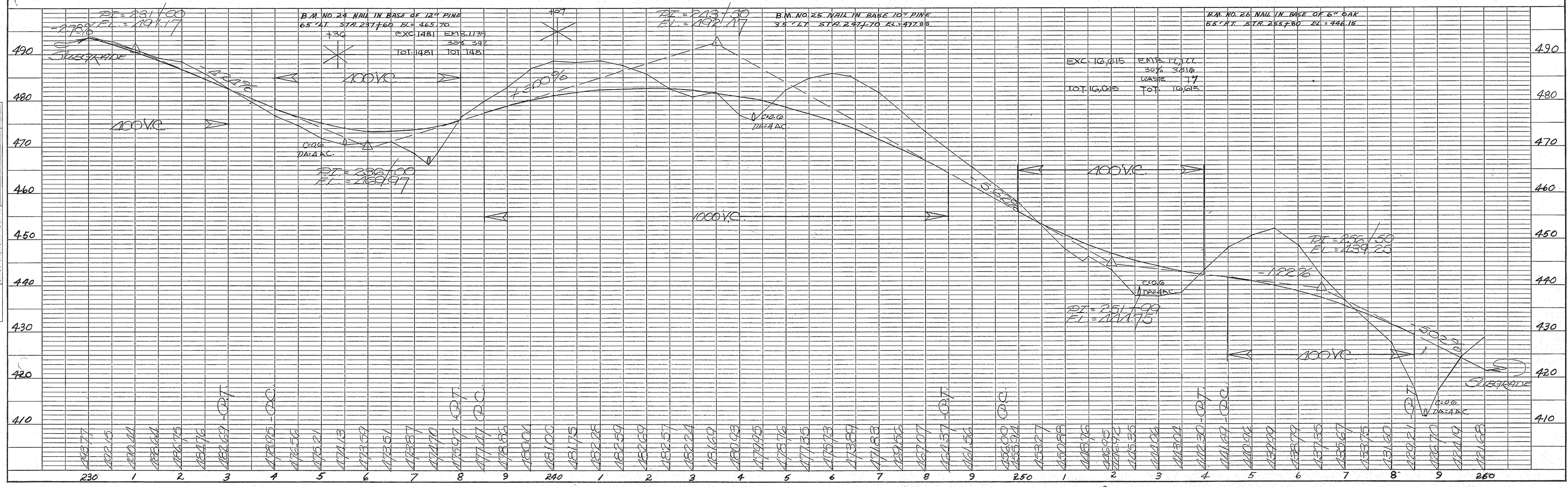
INTERNATIONAL PAPER, Co.  
BY V. PRES.  
D. 3.20.67

DATE	BY	NO.

DATE	BY	NO.



P.I. = 236+14.7  
Δ = 25° 25' RT.  
D = 200'  
T = 646.1  
L = 270.8  
E = 71.9

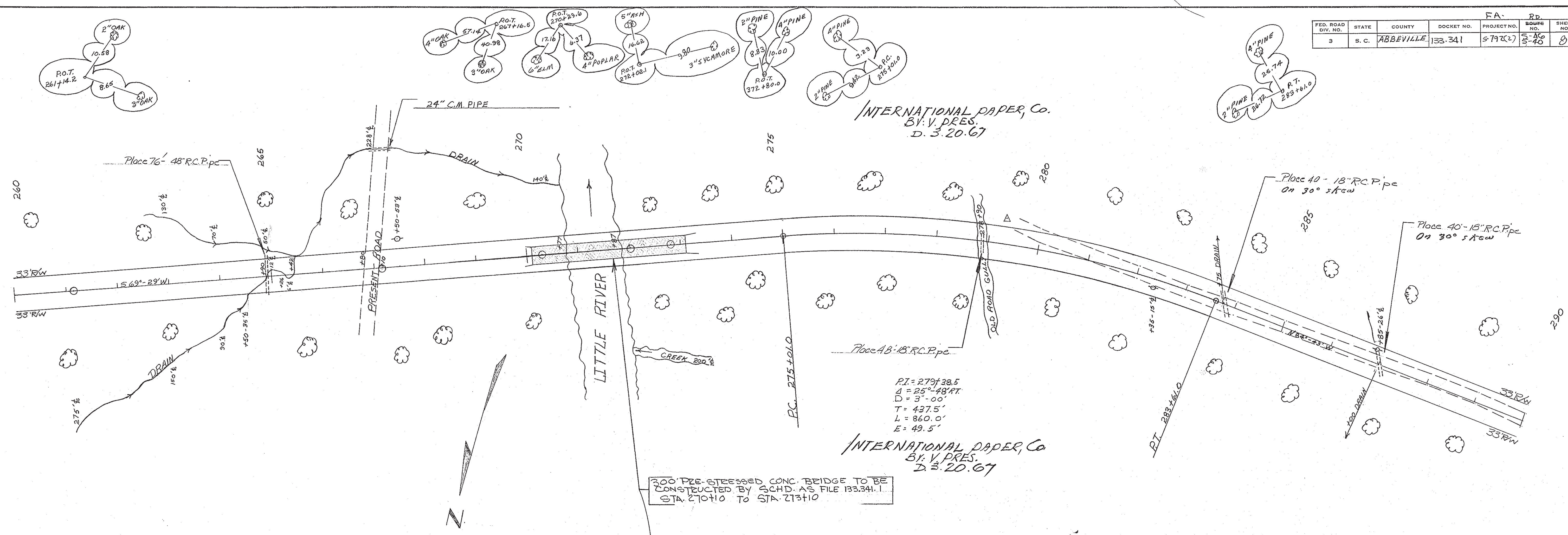


REVILLE, CO.  
D. 5-40

FED. ROAD DIV. NO.	STATE	COUNTY	DOCKET NO.	PROJECT NO.	RD. BOUND. NO.	SHEET NO.	TOTAL SHEETS
3	S. C.	ABBEVILLE	133-341	5792(2)	S-40	8	27

PLAN SURVEYED, PLOTTED, CHECKED, ALIGNED, BY: DATE: NO. NOTE BOOK: RT. OF WAY CHECKED: NO.

PROFILE SURVEYED, PLOTTED, CHECKED, BY: DATE: NO. NOTE BOOK: STRUCTURE NOTATIONS: CHKO



200' PRE-STRESSED CONC. BRIDGE TO BE CONSTRUCTED BY S.C.H.D. AS FILE 133.341.1 STA. 270+10 TO STA. 273+10

INTERNATIONAL PAPER Co.  
BY: V. PRES.  
D. 3. 20. 67

PI = 279+38.5  
A = 25° 48' RT  
D = 3'-00'  
T = 427.5'  
L = 860.0'  
E = 49.5'

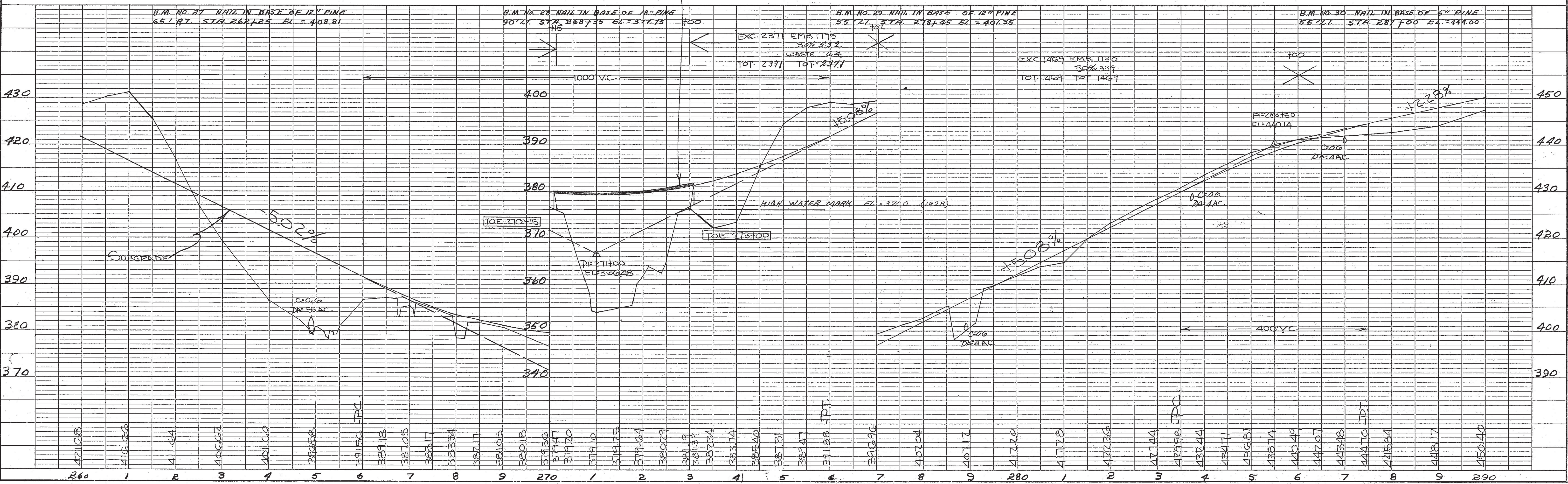


PLATE 1 - PLAN - PROFILE G.P.R. & R.E. STANDARD KEUFFEL & ESSER CO., NEW YORK.

ABBEVILLE - V.S. ROAD RD. 3-40

FED. ROAD DIV. NO.	STATE	COUNTY	PROJECT NO.	FILE NO.	SHEET NO.	TOTAL SHEETS
3	S.C.	ABBEVILLE	133,341	5-7920	9	27

DATE	BY

DATE	BY

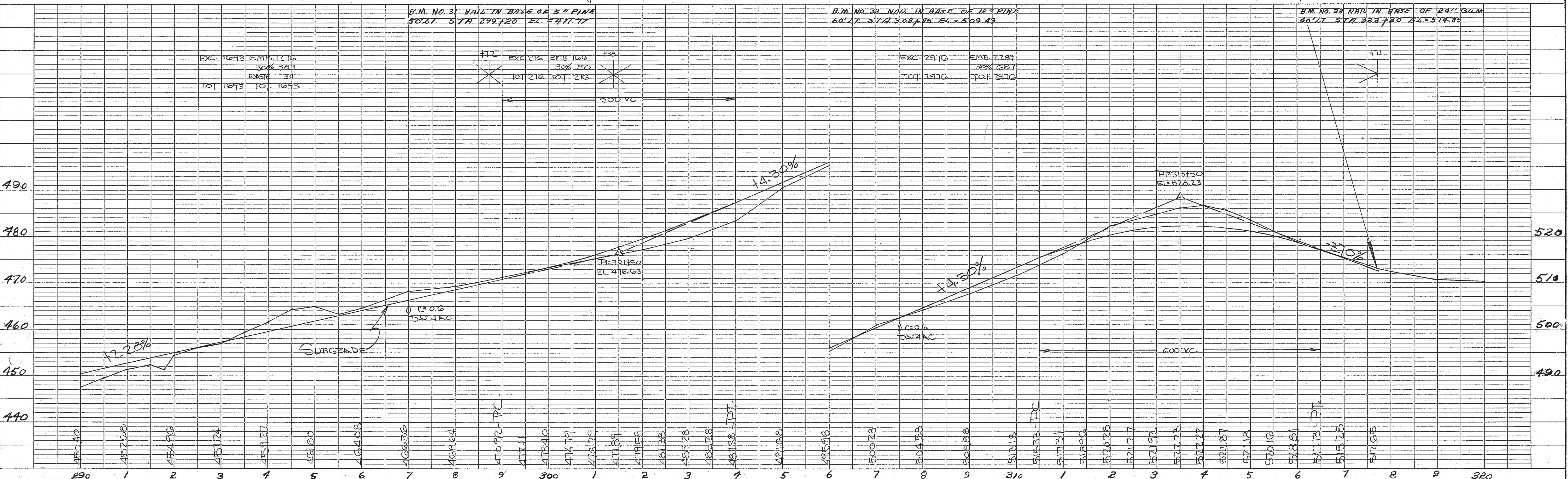
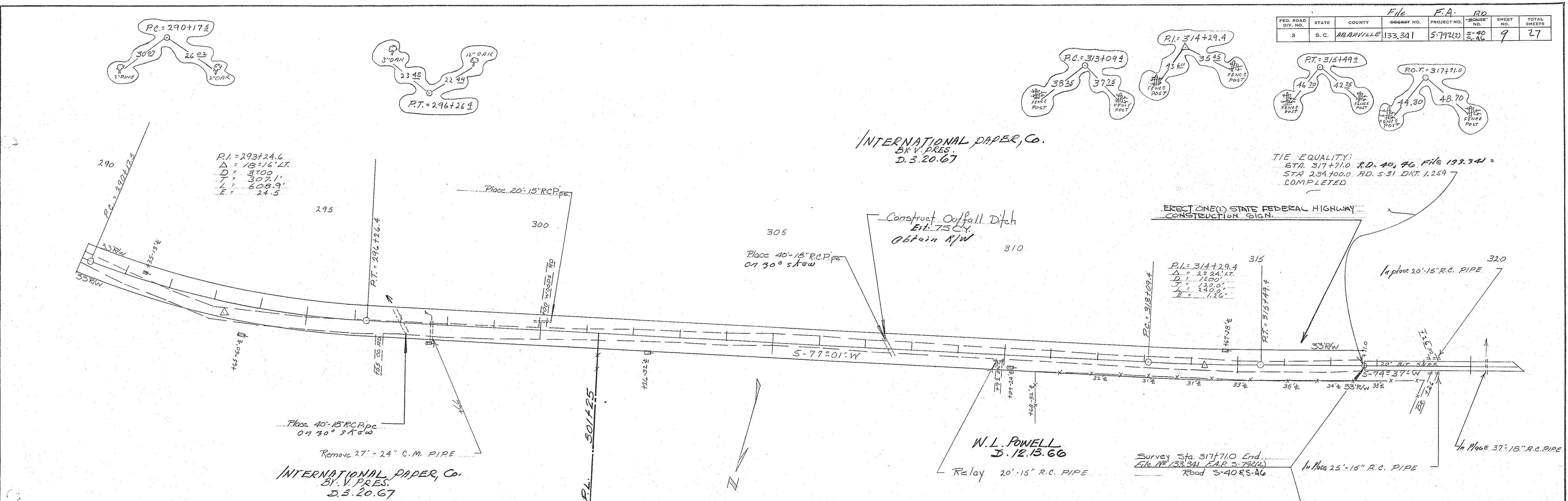


PLATE 1 - PLAN - PROFILE G.P.R. & R.E. STANDARD  
KEUFFEL & ESSER CO., NEW YORK.

ABBEVILLE - 1950  
D. 540