

INDEX OF SHEETS

Sheet No. 1	Title Sheet
" 2	Typical Sections of Improvement
" 3	Intersections Std.
" 4	Superelevation "
" 5	Traffic Control Devices
" 6	F.A. Markers & No. Plates
" 7-14	Plan and Profile
" 15	Bridge Sfd.
" 16-34	Cross Sections

SOUTH CAROLINA
STATE HIGHWAY DEPARTMENT
COLUMBIA

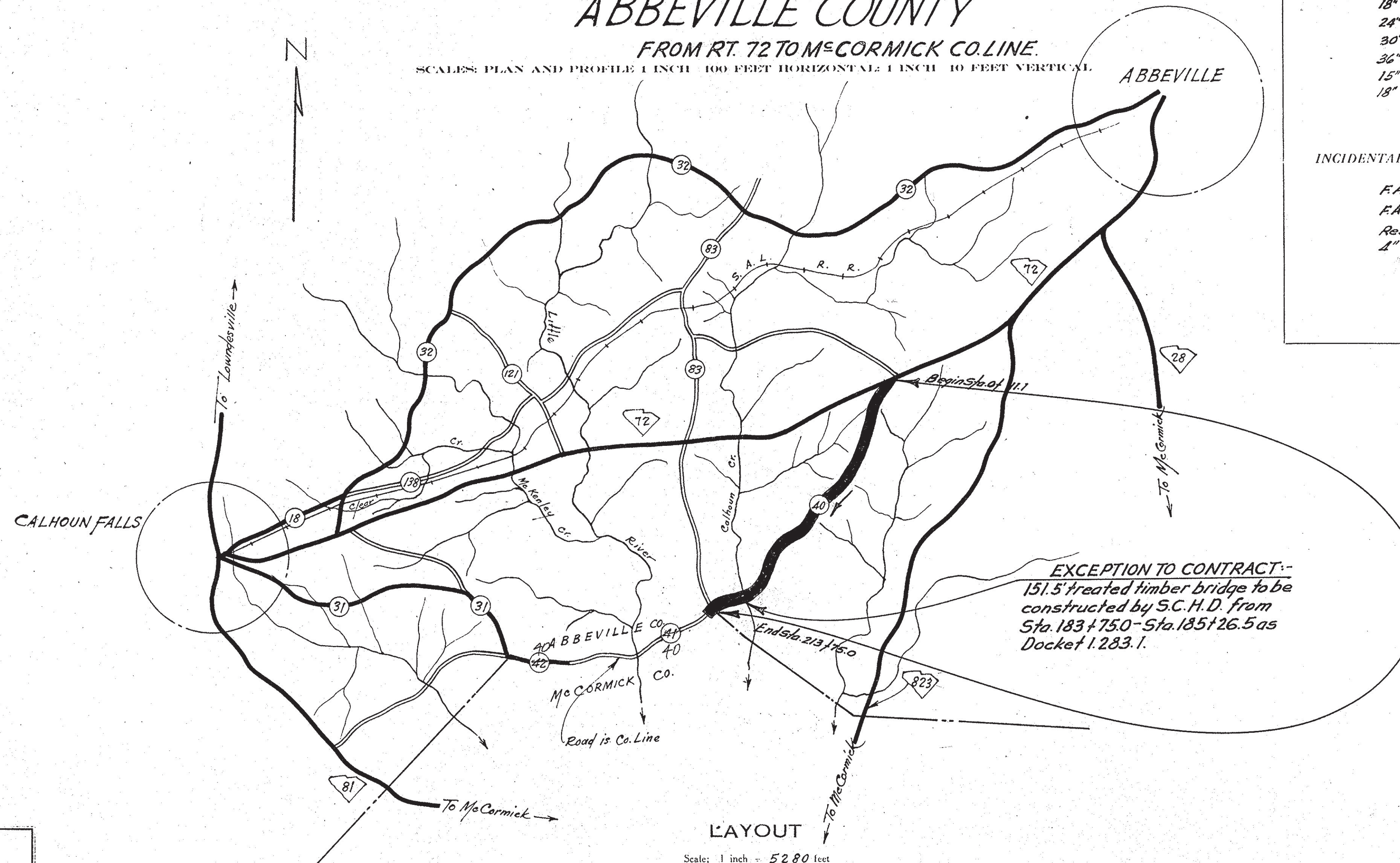
PLAN AND PROFILE OF PROPOSED
STATE HIGHWAY

F.A.P. 5-792(1)
DKT. 1.283
RD. 40

ABBEVILLE COUNTY

FROM RT. 72 TO Mc CORMICK CO. LINE.

SCALE: PLAN AND PROFILE 1 INCH = 100 FEET HORIZONTAL 1 INCH = 10 FEET VERTICAL



EXCEPTION TO CONTRACT -
151.5' treated timber bridge to be
constructed by S.C.H.D. from
Sta. 183+75.0 - Sta. 185+26.5 as
Docket 1.283.1.

F.A.P. No. 5-792(1)
DKT. 1.283, RD. 40
Sta. 0+11.1 - Sta. 213+75.0
(See Sheets 7 thru 14)

FED. ROAD DIV. NO.	STATE	COUNTY	DOCKET NO.	F. A. PROJ. NO.	ROUTE NO.	SHEET NO.	TOTAL SHEETS
3	S. C.	Abbeville	1.283	5-792(1)	40	1	34

SUMMARY OF ESTIMATED QUANTITIES

DESCRIPTION	Quantity	Unit
EARTHWORK		
Clearing and Grubbing within Roadway	2.0	Acres
Clearing and Grubbing of Borrow and Material Pits	27,073	C.Y.
Unclassified Excavation	113,121	C.Y.H.M.
Overhaul	2435	C.Y.
Selected Material for Shoulders		
BASE COURSE		
Earth Type Base Course (Ground Surf. Material)	8649	C.Y.
Scarifying, Mixing, Remixing, Shaping and Reshaping	51,494	M.S.Y.
SURFACING		
Bituminous Surfacing (Inverted Penetration with Seal)	49,138	S.Y.
STRUCTURES		
15" R.C. Pipe	332	L.F.
18" "	1076	"
24" "	40	"
30" "	52	"
36" R.C. Pipe	81	"
15" Relaid Pipe	21	"
18" Relaid Pipe	11	"
INCIDENTALS		
F.A. Markers	2	Each
F.A. No. Plates	2	"
Reset Fence	3,000	L.F.
1" Tile Underdrain	100	L.F.

CONVENTIONAL SIGNS

State Line	Trolley Poles	▲
County Line	Power Poles	●
City or Town Limits	Telephone or Telegraph Poles	○
Property Line	Marsh	⊗
Fence	Trees	⊙
Retaining Wall	Brush	⊘
Existing Road	Stumps	⊙
℄ and R.O.W. Lines of	Buildings	▭
Proposed Road	Bridge	—
Railroad	Concrete Box Culvert	—
Levee or Embankment	Pipe Culvert	—
Guard Rail	Drop Inlet and Culvert	—
Point of Intersection (P. I.)	Hub on Center Line	⊙

LEGEND

PROPOSED PROJECT	PAV.	GR.
OTHER ROADS		

Net Length of Roadway	4.017	Miles
Net Length of Bridges	0.029	Miles
Net Length of Project	4.046	Miles
Length of Exceptions		Miles
Gross Length of Project	4.046	Miles

Equalities in Stationing
None

Note: All workmanship and material on this project to conform with South Carolina State Highway Department Standard Specifications for Highway Construction dated March 15th 1939, as approved by the Administrator, Federal Works Agency.

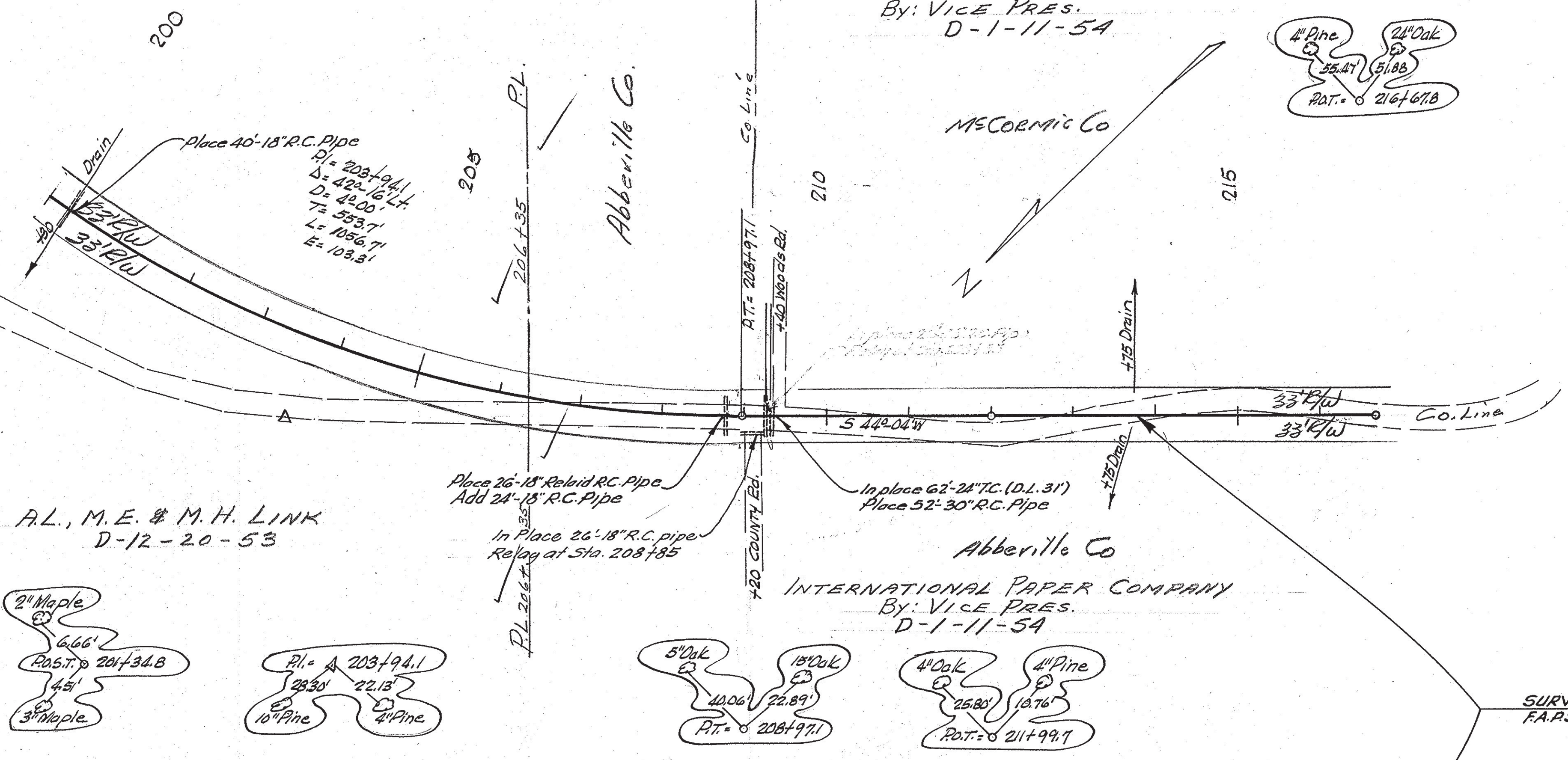
APPROVED:
S. M. Pearson 12-9-53
STATE HIGHWAY ENGINEER DATE

DEPARTMENT OF COMMERCE
BUREAU OF PUBLIC ROADS
RECOMMENDED FOR APPROVAL:
DISTRICT ENGINEER DATE
APPROVED:
DIVISION ENGINEER DATE

FED. ROAD DIV. NO.	STATE	COUNTY	DOCKET NO.	PROJECT NO.	ROUTE NO.	SHEET NO.	TOTAL SHEETS
3	S. C.	Abbeville	1283	5-792(1)	40	14	34

A.L., M.E. & M.H. LINK
D-12-20-53

INTERNATIONAL PAPER COMPANY
By: VICE PRES.
D-1-11-54

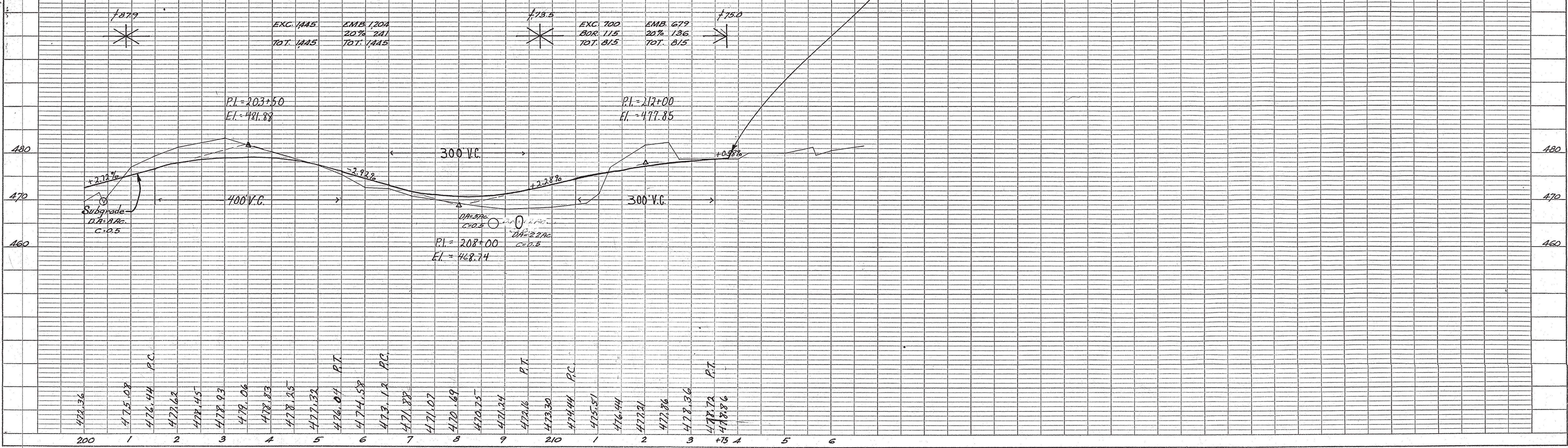


A.L., M.E. & M.H. LINK
D-12-20-53

INTERNATIONAL PAPER COMPANY
By: VICE PRES.
D-1-11-54

B.M. No. 21 - Nail in 4" Pipe
38' Rt. S. 10 201+30. E. 1-479.74

B.M. No. 22 - Nail in 4" Pipe
42' L. S. 10 215+68. E. 1-479.10



PLAN
SURVEYED BY: _____
NOTE BOOK NO. _____
ALIGNMENT CHECKED BY: _____
RT. OF WAY CHECKED BY: _____

PROFILE
SURVEYED BY: _____
NOTE BOOK NO. _____
GRADES CHECKED BY: _____
STRUCTURE NOTATION CHECKED BY: _____

Abbeville Co.
Dkt. 1283
Rd. 40.