

INDEX OF SHEETS

Sheet No.	Title Sheet
" 2	Typical Sections of Improvement
" 3	Intersections Sfd.
" 4	Superelevation "
" 5	Rip Rap "
" 6-12A	Plan & Profile - Dkt. 1.254 Pt. 1
" 12A-12B	" " " " 1.254 Pt. 2 & 33.252
" 13-22	" " " " 1.255 Pts. 1 & 2
" 23-44B	Cross Sections - Dkt. 1.254 Pt. 1
" 44B-44E	" " " " 1.254 Pt. 2 & 33.252
" 45-78	" " " " 1.255

SOUTH CAROLINA  
STATE HIGHWAY DEPARTMENT  
COLUMBIA

PLAN AND PROFILE OF PROPOSED  
STATE HIGHWAY

DKT. No. 1.254 Pt. 1-Rd. 31, FROM CALHOUN FALLS TO McCORMICK CO. LINE  
 DKT. Nos. 1.254 Pt. 2 & 33.252 - Rds. 42 & 47, FROM ABBEVILLE CO. LINE EAST 1/2 MI.  
 DKT. No. 1.255 Pts. 1 & 2 - Rds. 67 & 65, FROM LOWNESVILLE S.W. 5.0 MI.

ABBEVILLE COUNTY  
& McCORMICK COUNTY

SCALES: PLAN AND PROFILE 1 INCH = 100 FEET HORIZONTAL; 1 INCH = 10 FEET VERTICAL

EXCEPTION TO CONTRACT - DKT. 1.255.1  
 Sta. 15+77.0 to 16+23.5 (Bridge to be const. by S.C.H.D.)  
 " 47+17.6 to 47+32.9 ( " " rebuilt " )

EXCEPTION TO DKT.  
 Sta. 14+14.1 to 14+58.45 (R.R. crossing)

DKT. No. 1.255 Pt. 1 & 2  
 Part 1 - Sta. 0+31.0 to 10+75.0  
 " 2 - " 10+75.0 to 27+90.0  
 (See sheets 13 thru 22)

DKT. No. 1.254 Pt. 1  
 Sta. 0+00 to 207+00.0  
 (See sheets 6 thru 12A)

DKT. Nos. 1.254 Pt. 2 & 33.252  
 Sta. 207+00.0 to 234+00.0  
 (See sheets 12A & 12B)

APPROVED FOR TOWN OF LOWNESVILLE

DATE	NAME
29-50	Oliver
7-29-50	Legare Huger
7-29-50	Eugene Bondaroff
7-29-50	Donald J. Anderson
7-29-50	Max B. Sutherland
9-29-50	Max with and Clark

CONVENTIONAL SIGNS

State Line	Trolley Poles
County Line	Power Poles
City or Town Limits	Telephone or Telegraph Poles
Property Line	Marsh
Fence	Trees
Retaining Wall	Brush
Existing Road	Stumps
Proposed Road	Buildings
Railroad	Bridge
Levee or Embankment	Concrete Box Culvert
Guard Rail	Pipe Culvert
Point of Intersection (P. I.)	Drop Inlet and Culvert
	Hub on Center Line

LEGEND

PROPOSED PROJECT	PAV.	ER.
OTHER ROADS		

LAYOUT Scale: 1" = 1 Mi.

DKT.	DATE	DKT.	DATE	Miles
1.254 Pt. 1	1.254 Pt. 2	1.255	1.255	
3.920	0.511	0.189	4.991	
3.920	0.511	0.189	5.002	
3.920	0.511	0.197	5.003	

Equalities in Stationing: None

Note: All workmanship and material on this project to conform with South Carolina State Highway Department Standard Specifications for Highway Construction dated March 15th 1939, as approved by the Administrator, Federal Works Agency.

FED. ROAD DIV. NO.	STATE	COUNTY	ROUTE NO.	F. A. PROJ. NO.	ROUTE NO.	SHEET NO.	TOTAL SHEETS
3	S. C.	Abbeville	1.254 Pt. 2 & 33.252		207-31	1	78

SUMMARY OF ESTIMATED QUANTITIES

	DKT. 1.254 Pt. 1	DKT. 1.254 Pt. 2 & 33.252	DKT. 1.255 Part 1	DKT. 1.255 Part 2	
<b>EARTHWORK</b>					
Clearing and Grubbing within Roadway	Necy.	Necy.	Necy.	Necy.	
Clearing and Grubbing of Borrow and Material Pits	1.0	3.0		2.0	Acres
Unclassified Excavation	12,765	17,011	516	15,052	C.Y.
Overhaul	41,947	4,694	1,656	18,194	C.Y.H.M.
Selected Material for Shoulders	2,377	310	120	3,030	C.Y.
<b>BASE COURSE</b>					
Earth Type Base Course (Gr. Surf. Mat'l.)	7,533	1,000	432	9,522	C.Y.
Scarifying, Mixing, Re mixing, Shaping and Reshaping	45,000	6,000	2,510	57,036	M.S.Y.
<b>SURFACING</b>					
Bituminous Surfacing (Inverted Penetration with Seal)	42,700	5,700	2,400	54,106	S.Y.
<b>STRUCTURES</b>					
15 R.C. pipe	276	76	72	208	L.F.
18 " "	480	56		528	"
24 " "	56				"
30 " "				8	"
48 " "	40				"
60 " "	32				"
15 Raloid Pipe	86	21		70	"
18 " "	33	24		68	"
30 " "				30	"
<b>INCIDENTALS</b>					
Rip Rap	25			150	C.Y.
Reset fences	12.82	1,404		3757	L.F.
Moving Item No. 1 - Rf. Sta. 11+40	Lump sum				

APPROVED: *S. M. Rowan* 7/10/50  
 STATE HIGHWAY ENGINEER DATE

DEPARTMENT OF COMMERCE  
 BUREAU OF PUBLIC ROADS

RECOMMENDED FOR APPROVAL:

DISTRICT ENGINEER DATE

APPROVED:

DIVISION ENGINEER DATE

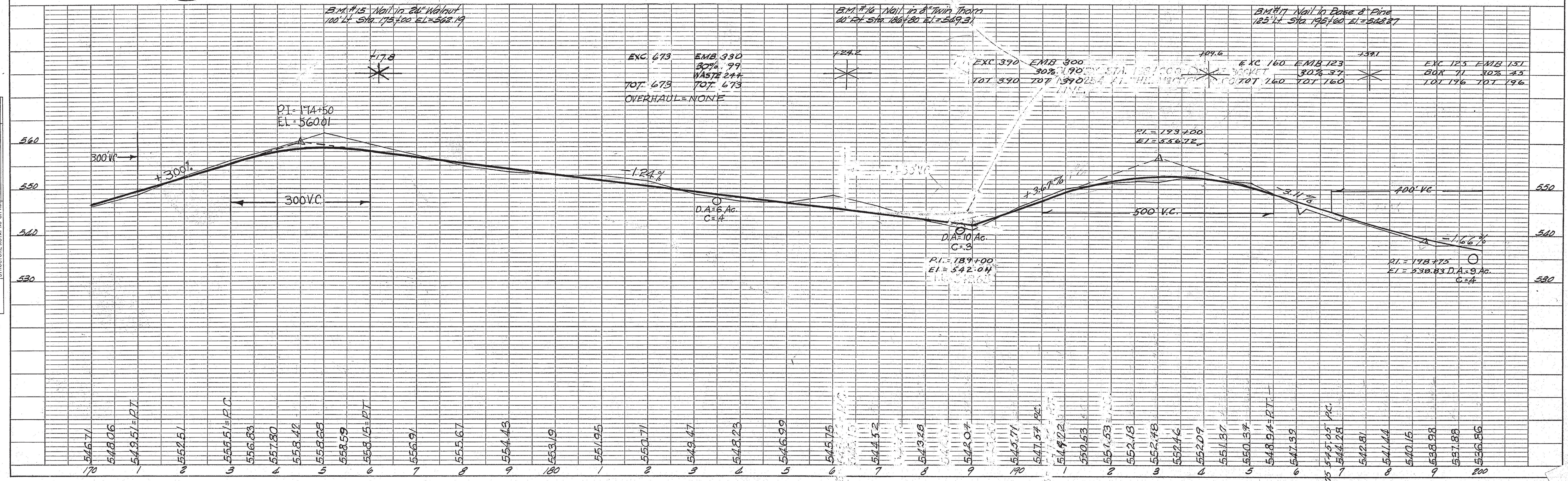
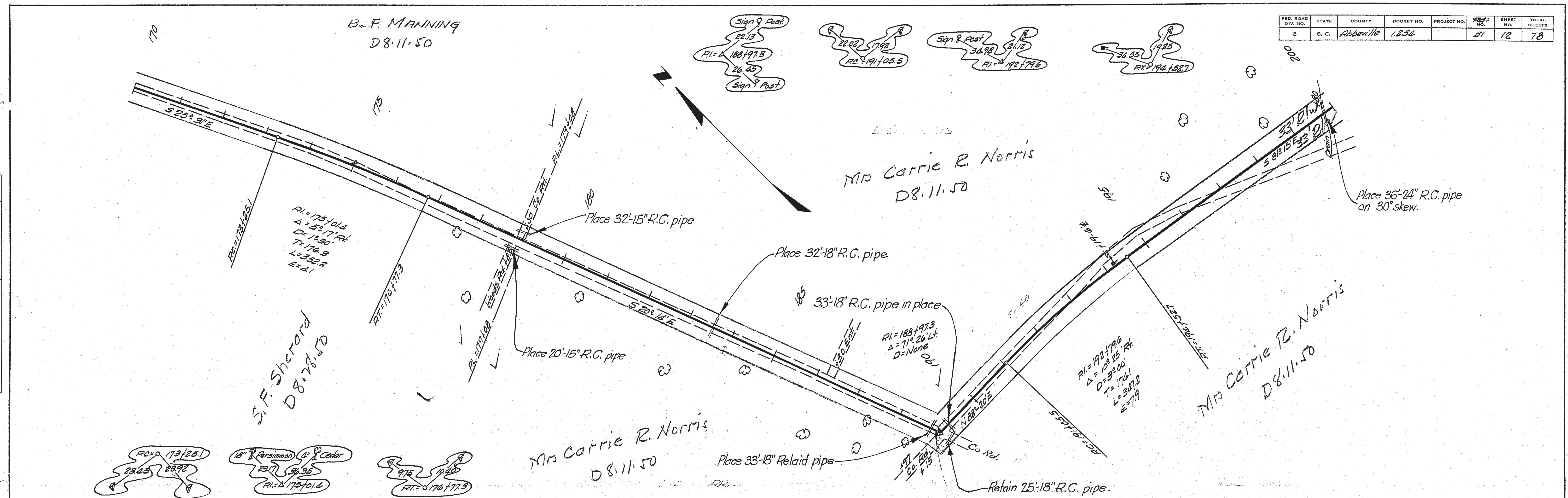


FED. ROAD DIV. NO.	STATE	COUNTY	DOCKET NO.	PROJECT NO.	SHEET NO.	TOTAL SHEETS
3	S. C.	Abbeville	1,254		31	78

PLAN	DATE	BY
SURVEYED		
PLOTTED		
NOTE BOOK NO.		
NO. OF SHEETS		
NO. OF SHEETS CHECKED		
NO. OF SHEETS NOT CHECKED		

PROFILE	DATE	BY
SURVEYED		
PLOTTED		
NOTE BOOK NO.		
NO. OF SHEETS		
NO. OF SHEETS CHECKED		
NO. OF SHEETS NOT CHECKED		

7

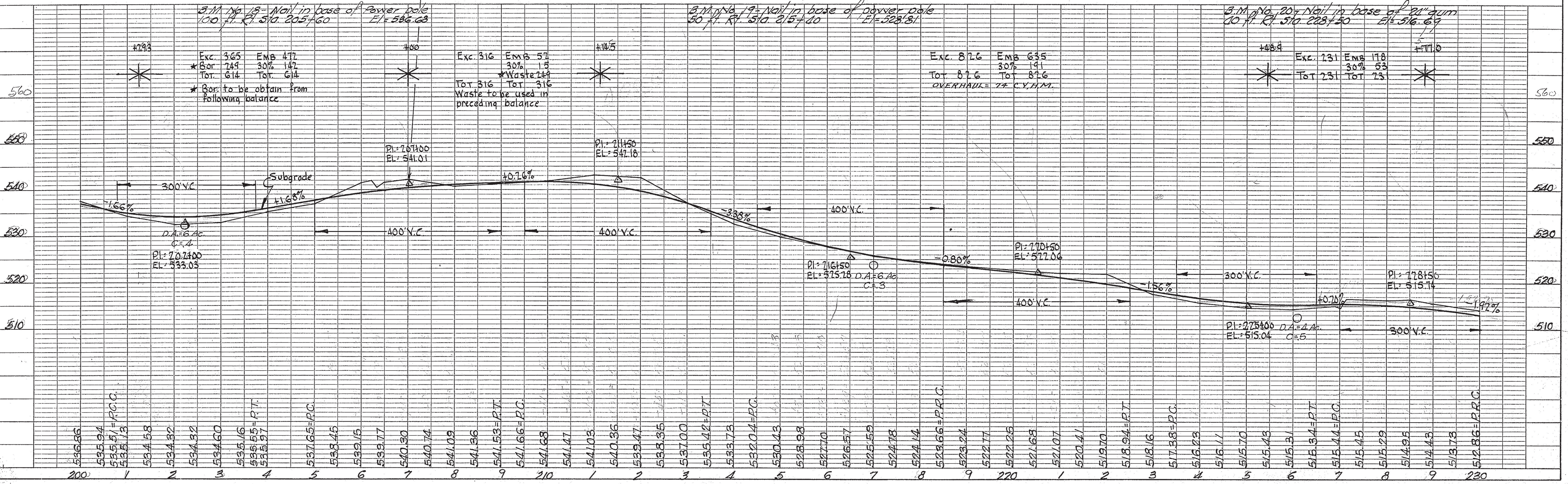
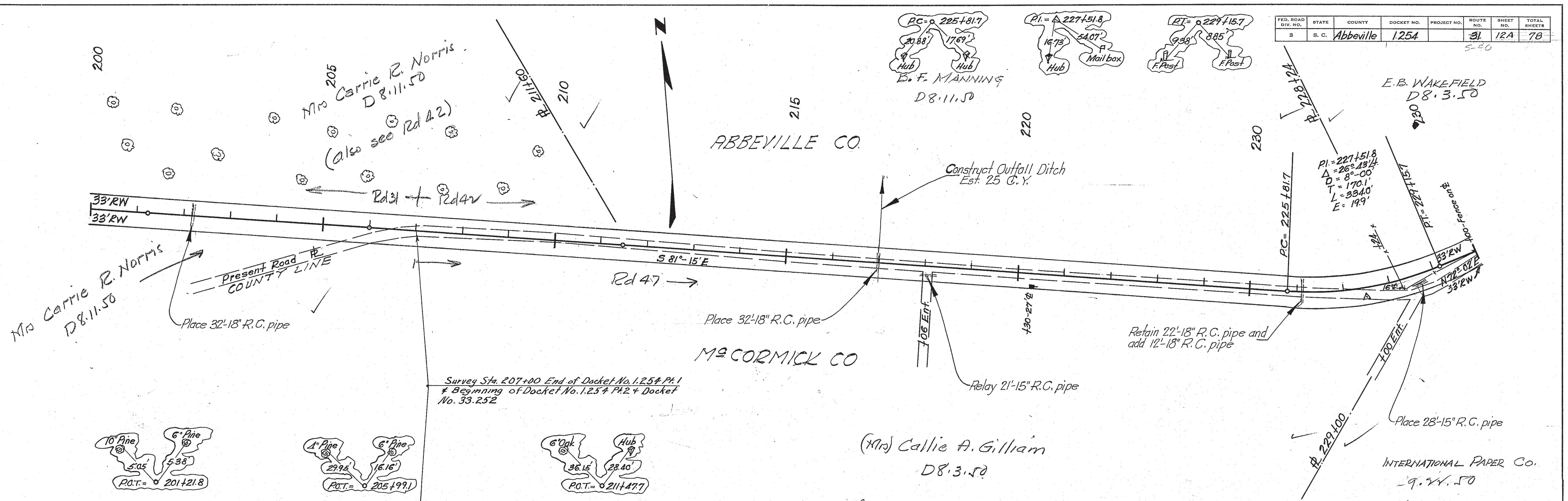




FED. ROAD DIV. NO.	STATE	COUNTY	DOCKET NO.	PROJECT NO.	ROUTE NO.	SHEET NO.	TOTAL SHEETS
3	S. C.	Abbeville	1,254		31	12A	78

PLAN	DATE
BY	
NO.	
DATE	
BY	
NO.	
DATE	
BY	
NO.	
DATE	

PROFILE	DATE
BY	
NO.	
DATE	
BY	
NO.	
DATE	
BY	
NO.	
DATE	





ROAD							
FED. ROAD DIV. NO.	STATE	COUNTY	DOCKET NO.	PROJECT NO.	ROUTE NO.	SHEET NO.	TOTAL SHEETS
3	S. C.	ABBEVILLE	1.254		34	128	76

S-40

PLAN	DATE
BY	
SURVEYED	
ALIGNED	
CHECKED	
RT. OF WAY	
CHECKED	
NO.	

PROFILE	DATE
BY	
SURVEYED	
GRADES	
CHECKED	
STRUCTURE	
NOTATIONS	
CHNGD.	
NO.	

