



# Hampton - Jasper County Line

Savannah River to a point along the  
Coosawhatchie River



**David Ballard, PLS**  
**Revenue and Fiscal Affairs**  
**SC Geodetic Survey**

# Overview

- Reason for boundary clarification
- Why is the SC Geodetic Survey the chosen agency
- The requirements and duties of the SC Geodetic Survey
- Explanation of our methods
- Boundary clarification procedure
- Legal process for individuals disagreeing with SCGS findings
- Statutory description of county boundary
- Research and findings
- Monumentation and Survey
- Conclusion



# The Reason...

- Passage of time and growth has led to confusion over statutory county descriptions and the locations of county boundary lines
- Exact and precise locations and boundaries of state's political subdivisions are critical for services, enforcement of property rights and election of public officials.
- Technology exists now to cost-effectively provide definite and permanent markers of boundary lines
- Necessary for state government and political subdivisions



# Why the SC Geodetic Survey?

- Over the last 30+ years, the South Carolina Geodetic Survey has worked with South Carolina counties to help resolve some of the ambiguities present in the current Code of Law
- SC Geodetic Survey was also used in the clarification of the NC/SC boundary
- In the early 90's Greenville and Spartanburg counties asked the Geodetic Survey to help them work out the location of their Statutory Boundary. Their boundary was clarified and placed into law.
- After it's completion the General Assembly decided to enact legislation assigning the SC Geodetic Survey as the mediator to resolve disputes between counties.



# The duties of the SC Geodetic Survey (SCGS) with respect to determining county boundaries

## SC Code of Laws §27-2-105

### Act No. 262 of 2014

- (1994) Dispute between two or more counties- SCGS will act as mediator to resolve the dispute
- (1994/2014) SCGS to assist counties in defining and monumenting the locations of county boundaries and positioning the monuments using geodetic surveys where counties are ill-defined, unmarked, or poorly marked
- (2014) SCGS will clarify county boundaries as defined in Chapter 3, Title 4
- (2014) SCGS will analyze archival and other evidence and perform field surveys to position geographically all county boundaries in accordance with statutory descriptions
- (2014) To amend section 27-2-105, Code of Laws of South Carolina, 1976, relating to the duties of the South Carolina Geodetic Survey (SCGS) with respect to determining county boundaries, so as to authorize and direct the SCGS to clarify county boundaries and mediate boundary disputes between counties by providing a procedure allowing the SCGS administratively to adjust county boundaries, to provide the procedures including notice that SCGS must follow in making such adjustments, to provide that affected parties may appeal these adjustments to the Administrative Law Court in a de novo hearing, to provide the method of determining the effective date of these administrative county boundary adjustments and the notice requirements for these adjustments to be effective and to provide that nothing contained in this administrative process restricts the authority of the General Assembly by legislative enactment to adjust or otherwise clarify county boundaries by legislative enactment.



# MONUMENTS

VS

# MONUMENTS



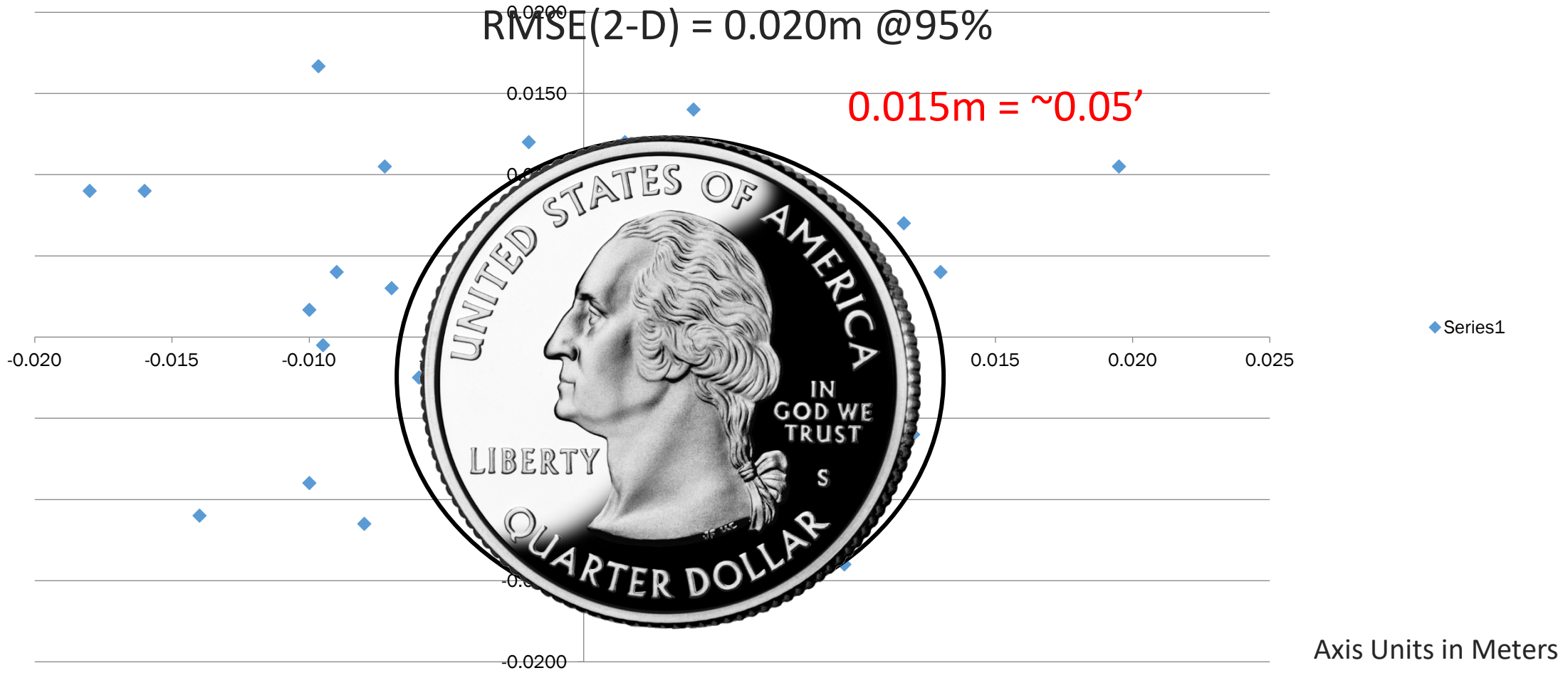
# Geodetic Surveys & Common Geographic Coordinate Systems

## Why we use them for boundary surveys.



# Scatter Gram of Differences Between Observations

2 - Five Minute Sessions





# Steps for Clarifying Boundaries

## SC Code of Law SECTION 27-2-105

### SCGS Requirements:

- Upon reestablishing county boundary, SCGS shall certify its work and within 30 days of certification:
  - Provide copies to the administrator of each affected county;
  - Provide written notification to affected parties
  - Provide notice and copies to the public through its official website and or other means it considers appropriate; and
  - Notify as it determines appropriate, other affected state and federal agencies
- (Initiates 60 Day Appeal Process)
- Certified Surveys submitted to Secretary of State, Register of Deeds Offices, and South Carolina Department of Archives with Cover Letter
- Date of the cover letter is the date the surveys become effective
- Introduce Legislation to update Code of Law to reflect clarified boundary with State Plane Coordinates

# SCGS Steps for Clarifying Boundaries

- Notify County Administrators in advance of planned work
- Conduct historical research for documentary evidence of boundaries\*
- Perform field work to locate monuments and corroborating evidence and position on State Plane Coordinates\*
- Share preliminary findings with county officials for impact analysis and to plan public meetings
- Hold public meeting
- Receive feedback and input from local officials and public
- Review and update findings, as appropriate
- Certify plats\*
- Send out mailings to affected parties along boundary\*
- 60day window for appeals\*
- Record/File plats\*



# SC Code of Law SECTION 27-2-105

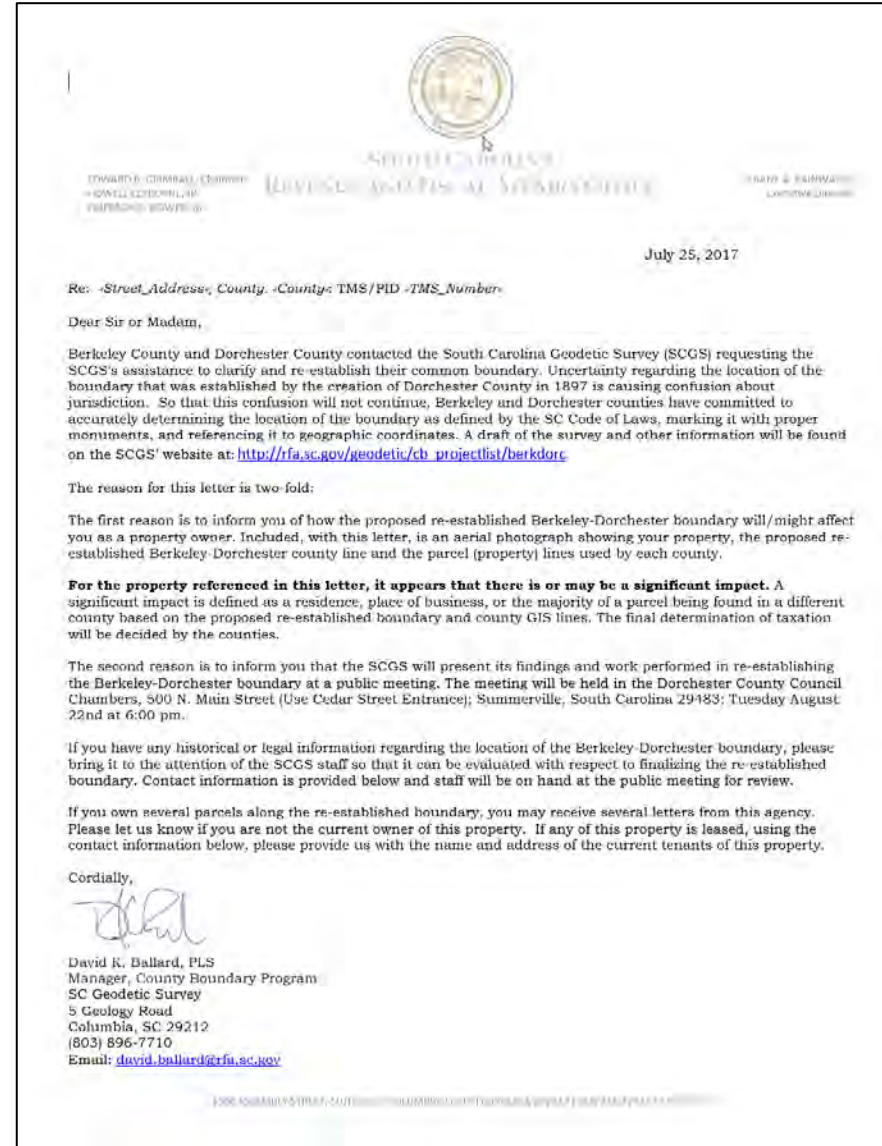
- **Affected Parties Disagreeing with SCGS:**
  - May file request for a contested case hearing with the SC Administrative Law Court
  - This decision may be appealed
  - **“Affected Party”**
    - Governing body of an affected county
    - Governing body of a political subdivision of this State
    - An elected official, other than a statewide elected official
    - A property owner or an individual residing in the certification zone
    - A business entity located in the certification zone
    - A nonresident individual who owns or leases real property situated in the certification zone

# Chapter 5, Title 4

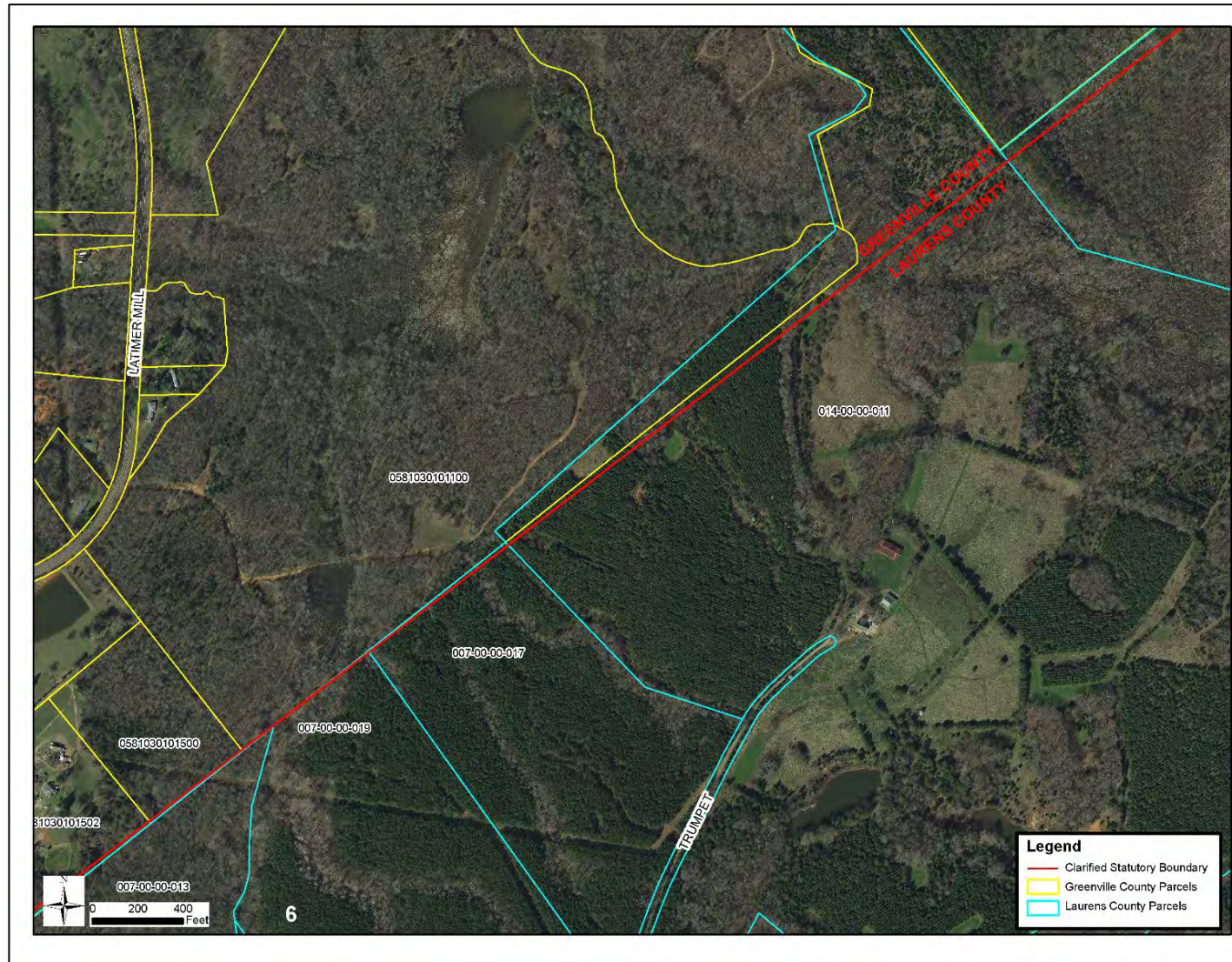
- **Change of Boundaries**

- **S.C. Code § 4-5-120: Procedure for annexing part of county-** governing body or 10 percent of registered voters petition in writing, shall deposit with the clerk of court an amount of money sufficient to cover the expenses of surveys , plats, annexation commission and the election to be held to determine whether the proposed annexation shall be effected and then file such resolution or petition in the office of the clerk of court
- **S.C. Code § 4-5-130: Appointment of Commission for annexation-** once presented to the governor then within 30 days the governor shall appoint a commission of four persons
- **S.C. Code § 4-5-140: Employment of Surveyors-** commission may contract for survey and location of the proposed change of line and for such purpose may employ 3 surveyors
- **S.C. Code § 4-5-170: Governor shall order election; voting place; eligible electors-** to be held in an area sought to be transferred and an election to be held in the county to which the area is proposed to be transferred
- **Propose and adopt Legislation**

# Public Meeting Notification (Example)

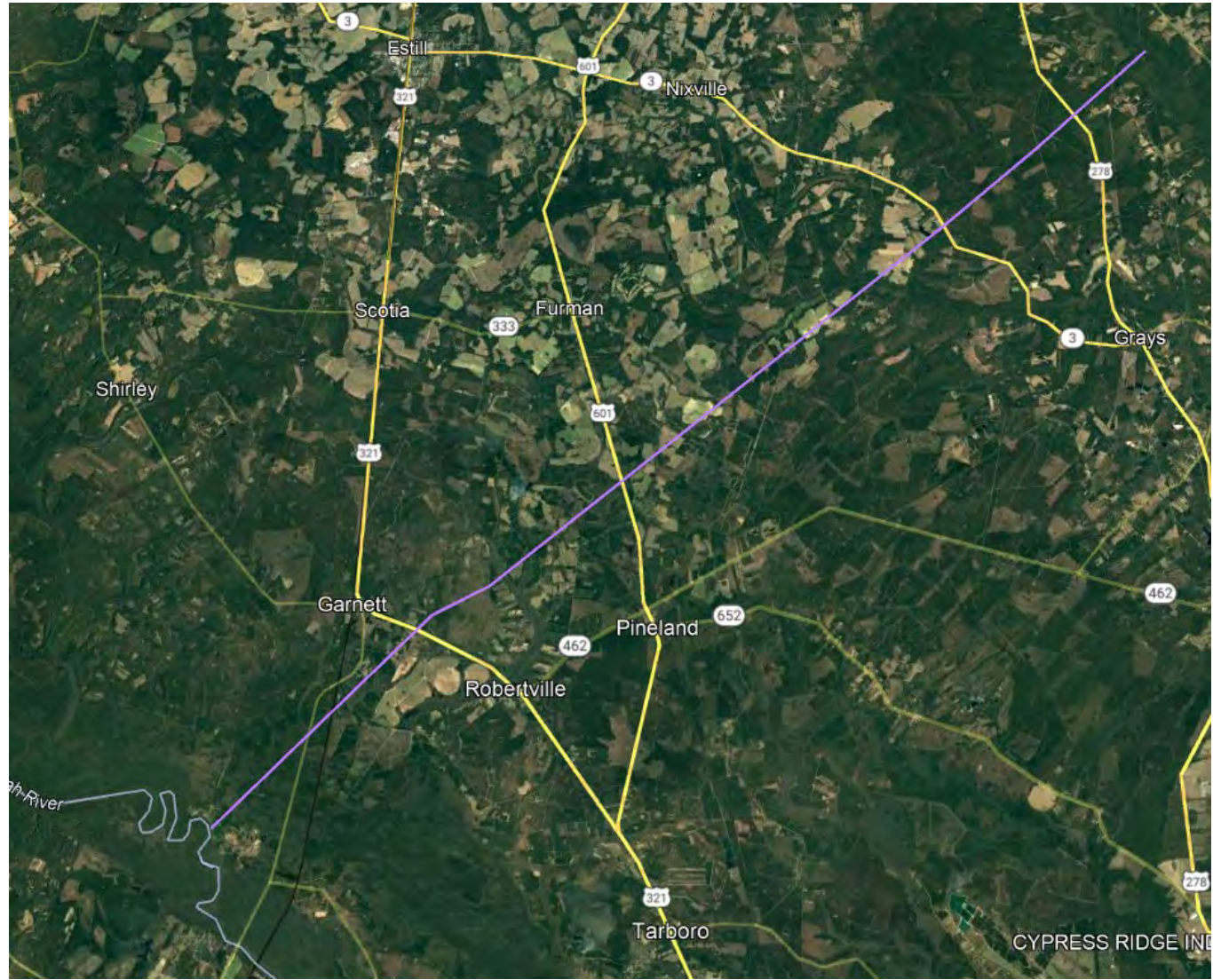


# Public Meeting Notification (Example)



CORNERSTONE  
SURVEYING & ENGINEERING, INC.







**Lines are Established by Legislative Acts**

**Acts and Joint Resolutions of the Great Assembly of South Carolina**

**An Act to Establish Jasper County**

Section 1



## **SECTION 1. An Act to Establish Jasper County**

“...Beginning at a point in the Savannah River, where the township line between Lawton and Goethe townships on one side and Robert and Coosawhatchie on the other, in Hampton County, intersects the South Carolina-Georgia State line;...”



**Lines are Established by Legislative Acts**

**South Carolina Code of Laws (Unannotated)**

**Chapter 3 Boundaries of Existing Counties**

Section 4-3-300. Hampton County

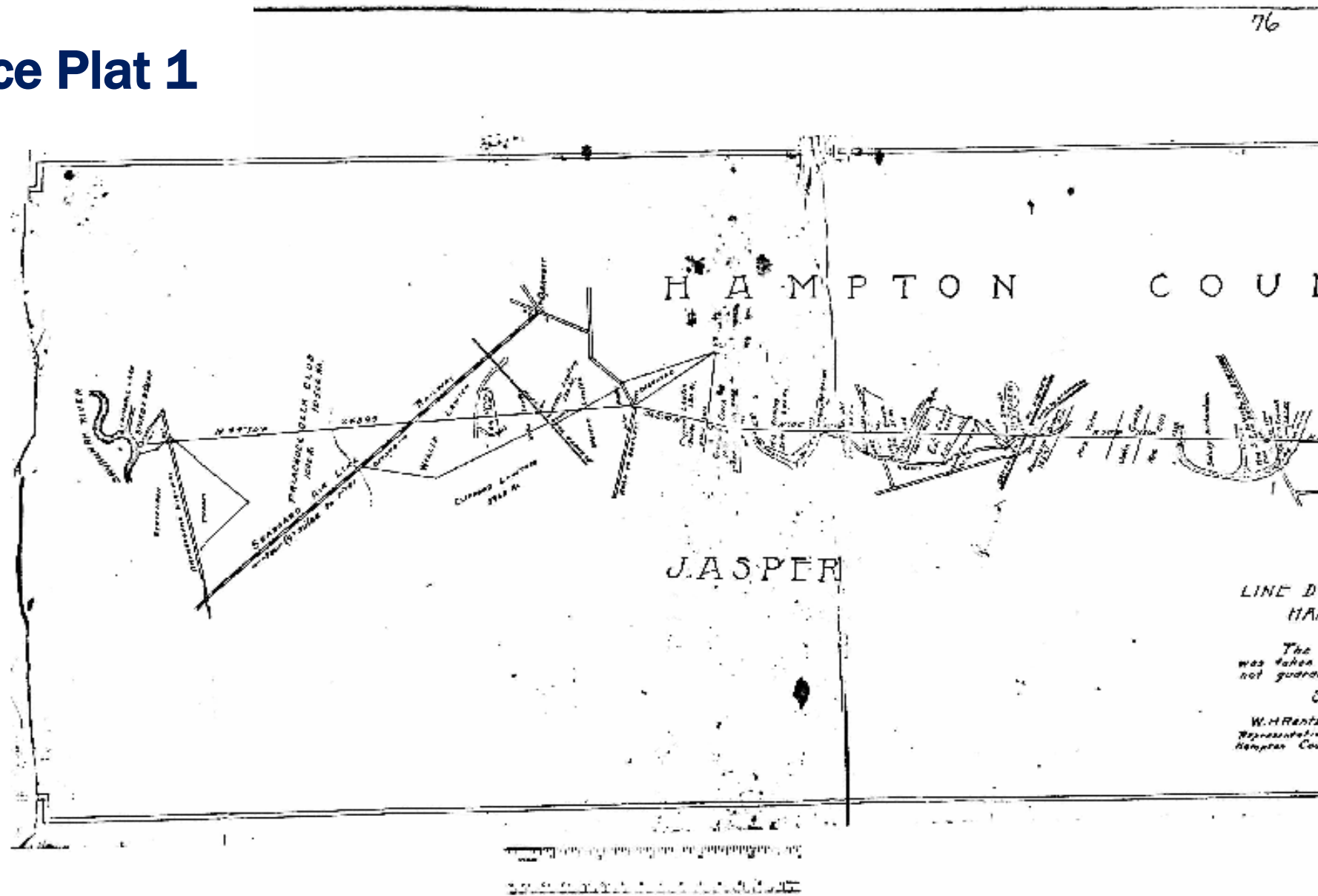


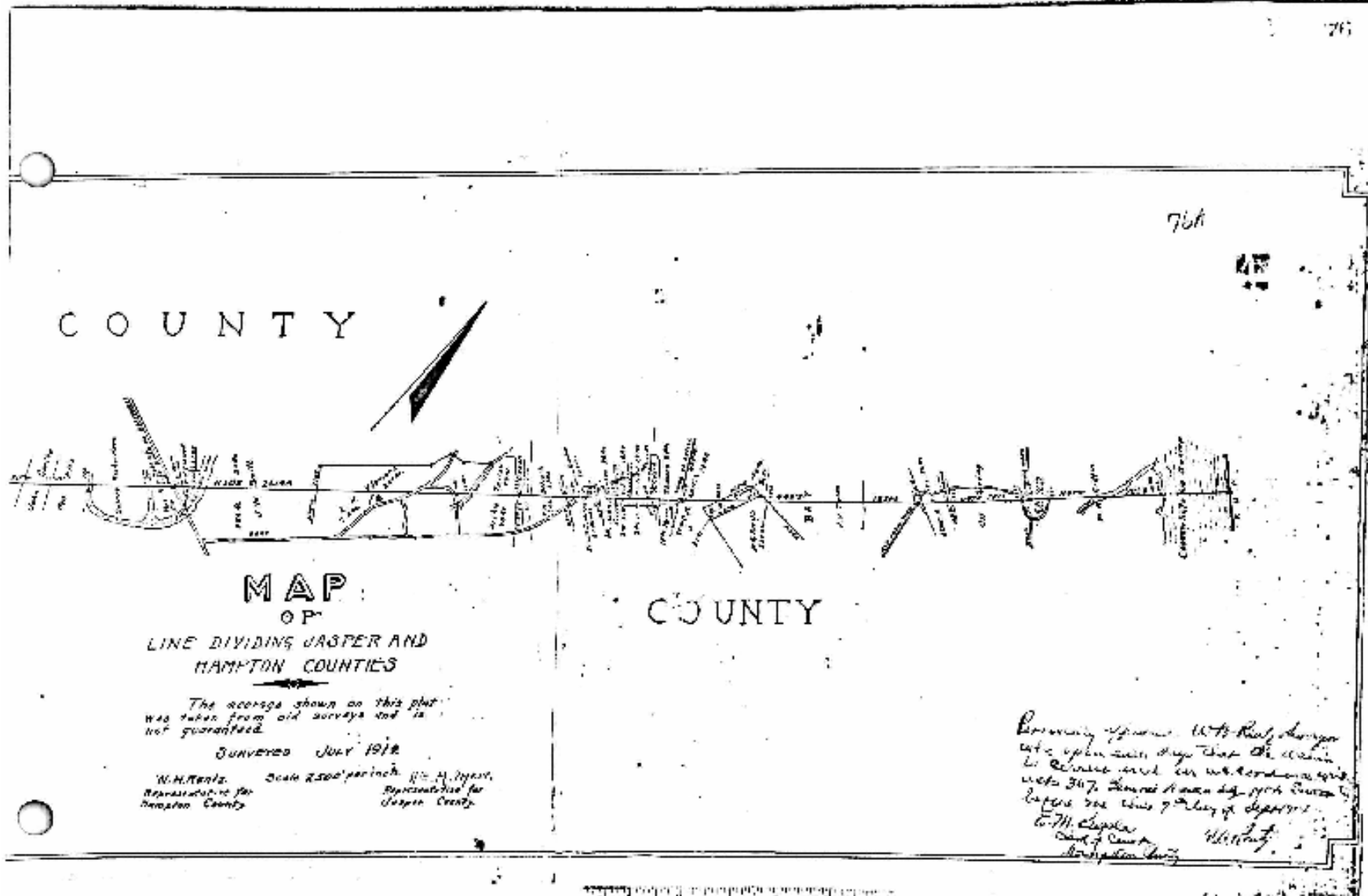
## **SECTION 4-3-300. Hampton County**

“Hampton County is bounded as follows: on the northeast by Colleton County from which it is separated by the Combahee and Salkehatchie Rivers; on the northwest by Allendale County; on the southwest by the Savannah River which separates it from the state of Georgia and on the southeast by the counties of Jasper and Beaufort.”



# Reference Plat 1





COUNTY

COUNTY

MAP  
OF

LINE DIVIDING JASPER AND  
HAMPTON COUNTIES

The acreage shown on this plat  
was taken from old surveys and is  
not guaranteed.

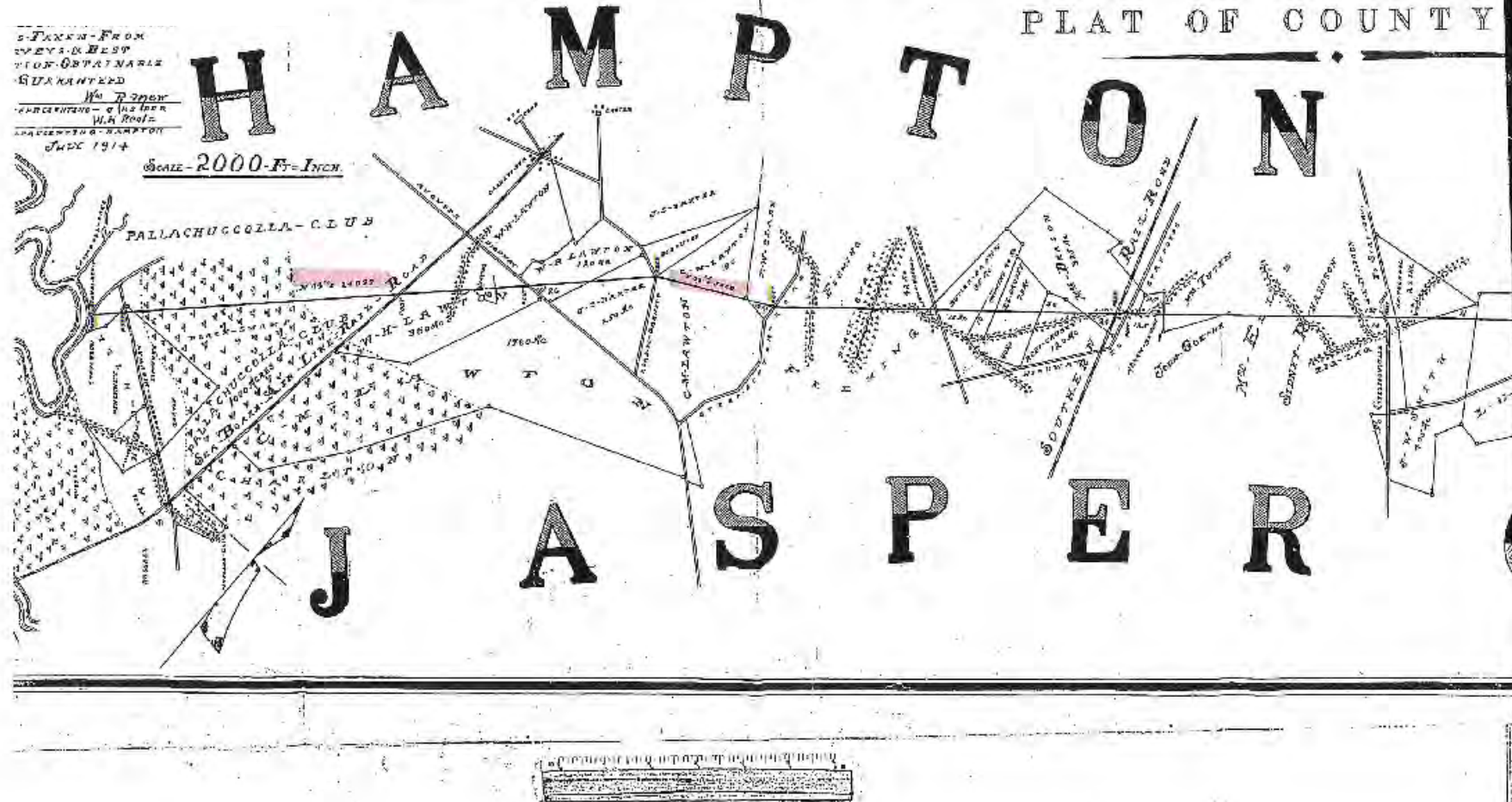
Surveyed July 1912

W.H. Rantz, Representative for Hampton County	Scale 2500 feet to an inch	W.H. Rantz, Representative for Jasper County
---	----------------------------	--

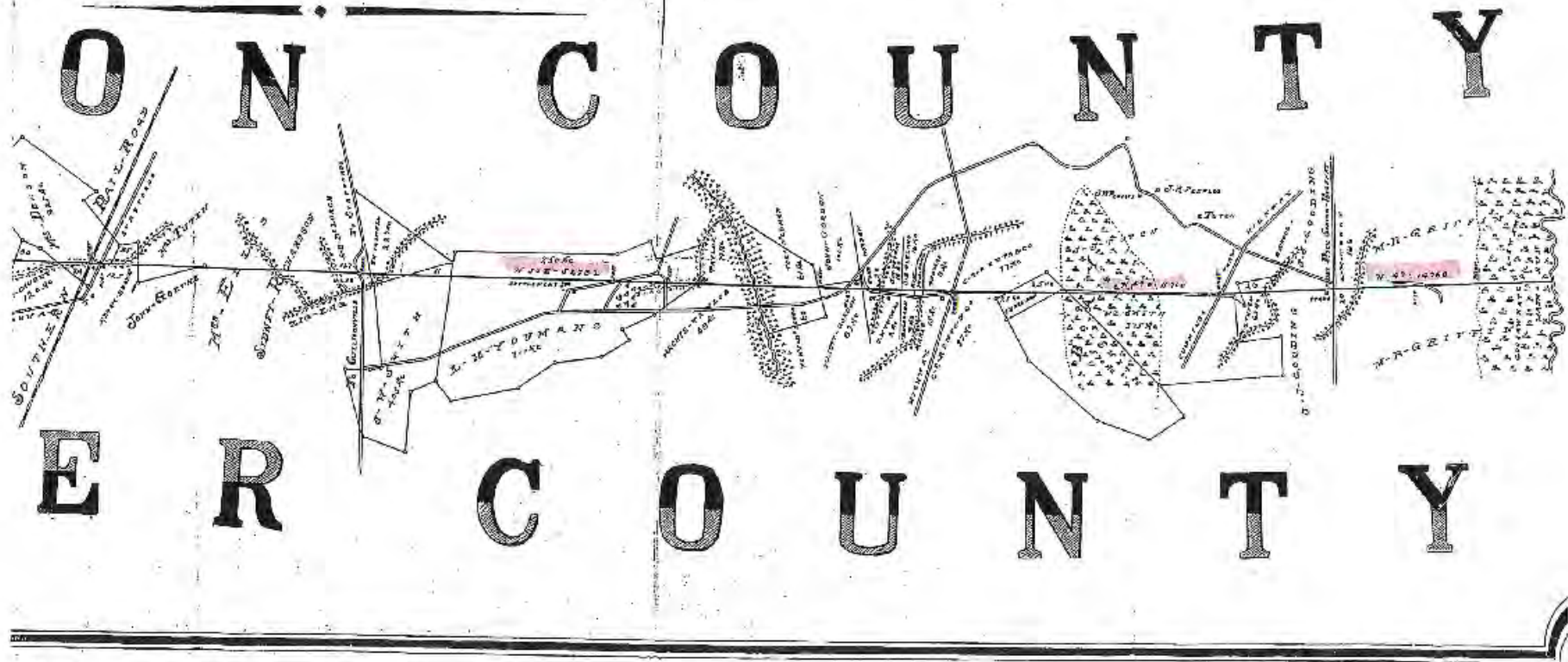
Boundary of Jasper vs. Hampton  
 was taken from old surveys and is  
 not guaranteed. See also  
 maps 347, 348 and 349 of  
 Jasper vs. Hampton  
 E.M. Chapin  
 Clerk of Court  
 Hampton County



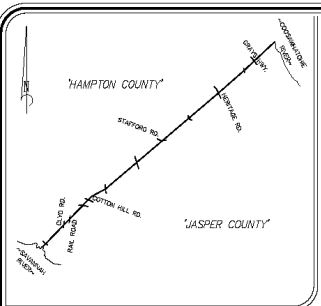
# Reference Plat 2



PLAT OF COUNTY LINE







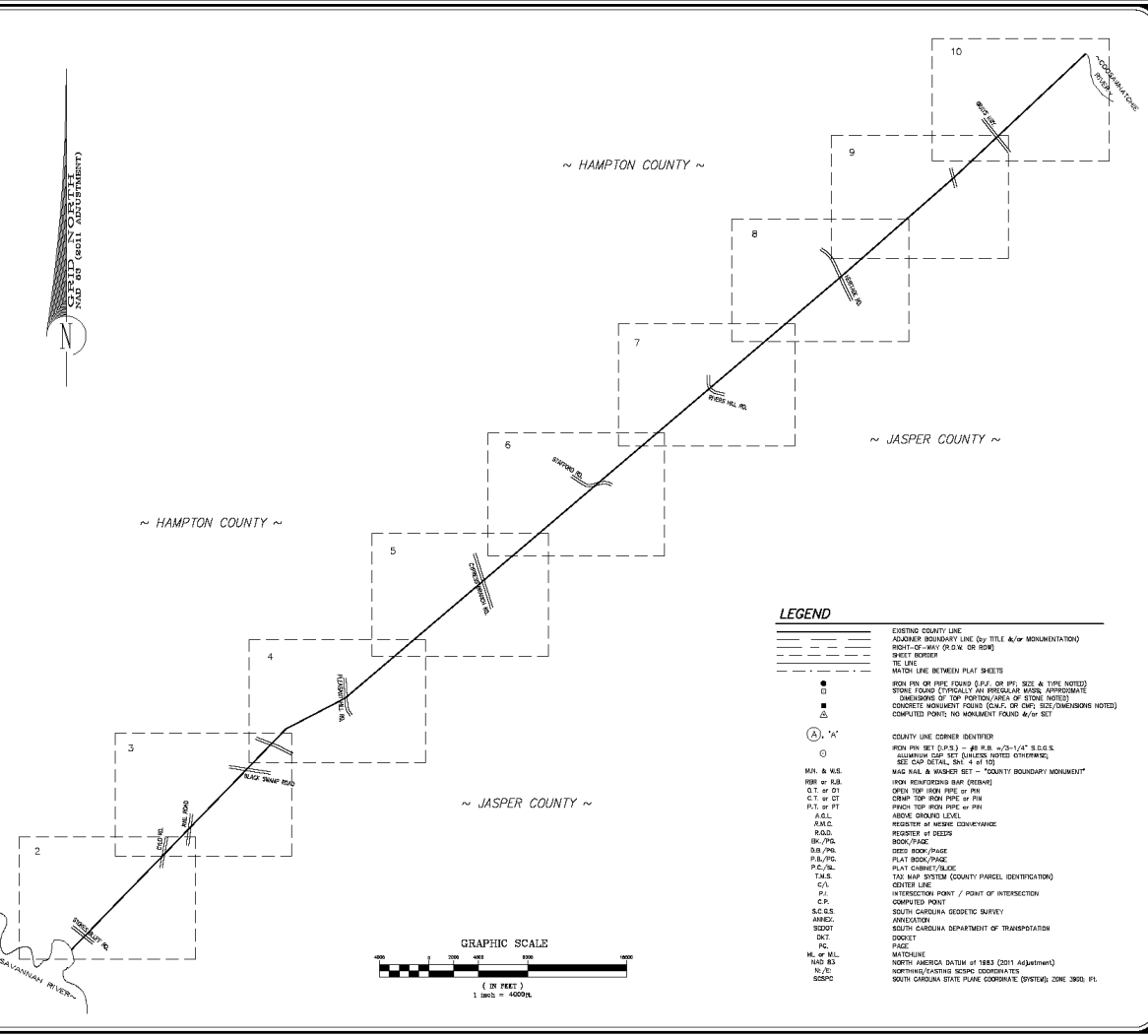
LOCATION MAP  
(NOT TO SCALE)

- NOTES**
- THIS IS NOT A VALID TRUE COPY OF THIS DOCUMENT UNLESS IT BEARS THE ORIGINAL SIGNATURE, DATE, AND THE PAVED, EMBOSSED SEAL OF THE REGISTERED PROFESSIONAL LAND SURVEYOR NOTED HEREON.
  - THE PURPOSE OF THIS PLAT IS TO MARK THE SECTION OF THE HAMPTON-JASPER COUNTY LINE STARTING AT THE SAVANNAH RIVER THEN RUNNING EAST TOWARD THE COTTON HILL RIVER. IT IS NOT INTENDED FOR RECORD. IT IS CONSIDERED TO BE A RECONSTRUCTION OF THE ORIGINAL PLAT OF THE PROPERTY INTERESTS NEARBY TO OR NEAR THE AFORESAID COUNTY LINE, THE HAMPTON-JASPER COUNTY LINE AND NEARBY LANDS OF THE SAID PROPERTIES MAY BE CONSIDERED BY ANY DEED AS SO SPECIFIED BY THE SOUTH CAROLINA LEGISLATIVE ACTS THAT ESTABLISH AND DEFINE OR DEFINE THE COUNTY LINE AS IT IS BEING PLATED HEREON. HOWEVER, IN NO WAY IS THIS SURVEY OR PLAT OF THIS PORTION OF THE HAMPTON-JASPER COUNTY LINE CONSIDERED NEARBY TO THE TITLE PROPERTY BOUNDARIES OF THE ADJACENT PARCELS BEING SHOWN OR REFERENCED HEREON.
  - THE PARCEL INFORMATION REFERENCED ON THIS PLAT IS ONLY THAT USED TO SHOW THE PUBLIC RECORD OWNERSHIP OF THE PROPERTIES ADJOINING OR NEAR THE HAMPTON-JASPER COUNTY LINE BEING PLATED ON RECORD. RESPECTIVELY, IN THE HAMPTON COUNTY REGISTER OF DEEDS (R.O.D.) AND THE JASPER COUNTY REGISTER OF DEEDS (R.O.D.) SAID DEEDS DO NOT CONSTITUTE A TITLE SEARCH, TITLE ABSTRACT, OR TITLE OPINION FOR ANY OF THE PROPERTIES SHOWN HEREON.
  - THIS PLAT HAS BEEN DONE FOR THE STATE OF SOUTH CAROLINA IN ACCORDANCE WITH THESE STATUTES AND SUBJECT TO THE INFORMATION SHOWN HEREON. ALL OTHER STATUTES ARE SUBSEQUENTLY PUT ON NOTICE AS TO THE LIMITED DEGREE OF RELIANCE UPON THIS PLAT BY THIRD PARTIES.
  - NO SURVEY EVALUATION OR DETERMINATION OF ANY ENVIRONMENTAL RISKS OR HAZARDOUS WASTE OR CONTAMINATION, SUBSURFACE CHARACTERISTICS OR PAH, PCB, PAH, METALS, OR ORGANIC SPECIES, HAS BEEN DONE FOR THE SUBJECT PROPERTIES, AND THIS SURVEY DOES NOT COPY TO THE PRESENCE OR ABSENCE OF SUCH CONDITIONS.
- FOR ADDITIONAL NOTES SPECIFIC TO THIS SURVEY AND THE INFORMATION FOR THIS PLAT AND THE COUNTY BOUNDARY LINE SHOWN HEREON, SEE SHEETS 2 THRU 10 OF THIS PLAT.
- ALL "NORTHING (N)" AND "EASTING (E)" COORDINATES SHOWN ON THIS PLAT ARE EXPRESSLY GIVEN AS SOUTH CAROLINA STATE PLANE COORDINATES (SPSPLANE). ZONE 3000, NAD 83, 2011 ADJUSTMENT ("S"). SHEET 2 OF 10 OF THIS PLAT PROVIDES A COUNTY LINE MONUMENT SUMMARY TABLE OF THE SOUTH CAROLINA STATE PLANE COORDINATE DATA ALONG THE MAPPED REGION OF THE EXISTING COUNTY LINE.
  - THE ORIENTATION OF THIS PLAT IS BEING MADE NORTH, WILL BE 2011 ADJUSTMENT ZONE 3000. ALL LINEAR DIMENSIONS AND DISTANCES SHOWN HEREON ARE SCALED TO SPSPLANE. NO CORRECTION SCALE HAS BEEN CALCULATED FOR THIS PLAT.

HEREBY STATE THAT TO THE BEST OF MY PROFESSIONAL KNOWLEDGE, INFORMATION, AND BELIEF, THE SURVEY SHOWN HEREON WAS MADE IN ACCORDANCE WITH THE REQUIREMENTS OF THE "STANDARDS OF PRACTICE MANUAL FOR SURVEYING IN SOUTH CAROLINA" (EFFECTIVE DATE: 04-01-2008) AS PER ARTICLE 48-450 F-1 THAT THIS MAP OR PLAT IS INTENDED ONLY TO SHOW INFORMATION SUPPORTED FOR A SPECIFIC STATED PURPOSE THAT SUPPORTS THE COUNTY LINE AS BASED ON ACTUAL FIELD SURVEY EVIDENCE AND/OR MEASUREMENTS WHICH MEET OR EXCEED THE REQUIREMENTS FOR A CLASS "A" SURVEY AS SPECIFIED HEREON.

NOT VALID UNLESS SIGNED IN RED INK.

ENDORSED SEAL



- LEGEND**
- EXISTING COUNTY LINE
  - ADJACENT BOUNDARY LINE (BY TITLE &/OR MONUMENTATION)
  - RIGHT-OF-WAY (R.O.W. OR ROW)
  - SWELL BORDER
  - TC LINE
  - MATCH LINE BETWEEN PLAT SHEETS
  - IRON PIN OR PIPE FOUND (I.P.F. OR I.P.P. SIZE & TYPE NOTED)
  - STONE CORNER (CYLINDRICAL OR IRREGULAR SHAPE APPROXIMATE DIMENSIONS OF TOP PORTION/AREA OF STONE NOTED)
  - CONCRETE MONUMENT FOUND (C.M.F. OR C.M.P. SEE DIMENSIONS NOTED)
  - COMPUTED POINT; NO MONUMENT FOUND &/OR SET
  - COUNTY LINE CORNER IDENTIFIER
  - IRON PIN SET (I.P.S.) - #1 R.R. - 2 1/4" S.D.S.E.
  - ALUMINUM CAP SET (A.C.S.) OVERLAPPING SEE CAP INITIAL SH # AT 10'
  - W.C. HALL & WANDER SET - "COUNTY BOUNDARY MONUMENT"
  - IRON REINFORCING BARP (REBAR)
  - OPEN TOP IRON PIPE OR PIN
  - C.T. OF CT
  - C.S.M.P. TOP IRON PIPE OR PIN
  - P.I. OF PT
  - R.O.L.
  - R.A.O.
  - REGISTER BY MERGE CONVEYANCE
  - REGISTER BY DEED
  - BOOK/PAGE
  - DEED BOOK/PAGE
  - PLAT BOOK/PAGE
  - PLAT CORNER/ALICE
  - TAX MAP SYSTEM (COUNTY PARCEL IDENTIFICATION)
  - CENTER LINE
  - INTERSECTION POINT / POINT OF INTERSECTION
  - COMPUTED POINT
  - SOUTH CAROLINA GEODETIC SURVEY
  - ANNEXATION
  - SOUTH CAROLINA DEPARTMENT OF TRANSPORTATION
  - DOCKET
  - PAGE
  - MATCHLINE
  - NORTH AMERICA DATUM OF 1883 (2011 ADJUSTMENT)
  - NAD 83
  - N.T.R.
  - NORTHING/EASTING SCHEME COORDINATES
  - SOUTH CAROLINA STATE PLANE COORDINATE (SPSPLANE) ZONE 3000, F1

DATE OF THIS SURVEY: 4/27/2023  
 PROJECT NO.: 20220  
 SHEET NO.: 1 OF 10  
 DRAWN BY: J.L.L.

**CORNERSTONE**  
 SURVEYING & ENGINEERING, INC.  
 120 Thomas Bluff Rd., Summerville, SC 29486 • Phone: 843-871-8733

A PART OF A PORTION OF THE HAMPTON-JASPER COUNTY LINE STARTING AT A POINT IN THE SAVANNAH RIVER, RUNNING NORTHEASTERLY THROUGH COTTON HILL ROAD (U.S. HIGHWAY 301) THEN BEING BOUNDARIED BY THE SOUTH CAROLINA STATE PLANE COORDINATE DATA ALONG THE MAPPED REGION OF THE EXISTING COUNTY LINE. THIS PLAT IS NOT INTENDED FOR RECORD. IT IS CONSIDERED TO BE A RECONSTRUCTION OF THE ORIGINAL PLAT OF THE PROPERTY INTERESTS NEARBY TO OR NEAR THE AFORESAID COUNTY LINE, THE HAMPTON-JASPER COUNTY LINE AND NEARBY LANDS OF THE SAID PROPERTIES MAY BE CONSIDERED BY ANY DEED AS SO SPECIFIED BY THE SOUTH CAROLINA LEGISLATIVE ACTS THAT ESTABLISH AND DEFINE OR DEFINE THE COUNTY LINE AS IT IS BEING PLATED HEREON. HOWEVER, IN NO WAY IS THIS SURVEY OR PLAT OF THIS PORTION OF THE HAMPTON-JASPER COUNTY LINE CONSIDERED NEARBY TO THE TITLE PROPERTY BOUNDARIES OF THE ADJACENT PARCELS BEING SHOWN OR REFERENCED HEREON.

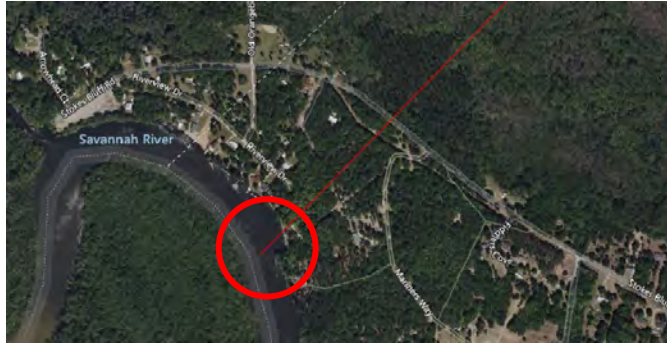
THE SOUTHERN CORNER OF THE STATE OF SOUTH CAROLINA

Date of Map: 4/27/2023  
 Design: J.L.L.  
 Check: J.L.L.  
 Approved: J.L.L.  
 P.L. & P. #  
 P.L. Board App. #

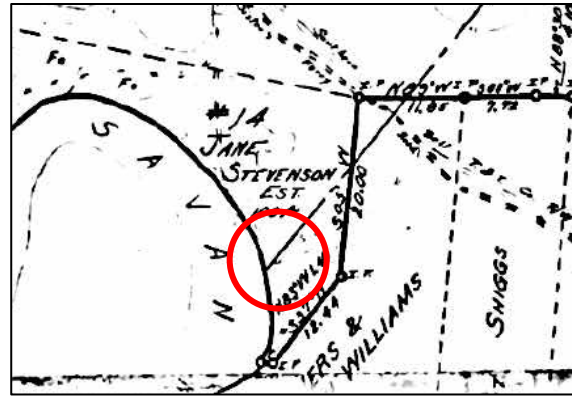
Date: Revision No.

Proj. No.: 20220  
 Sheet 1 Of 10

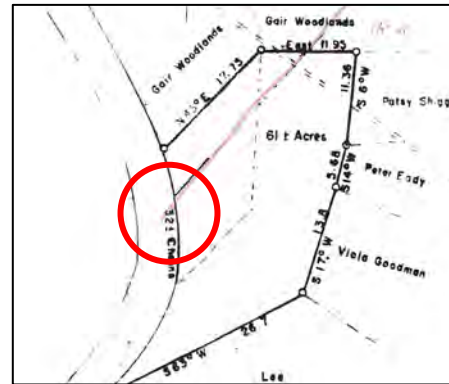
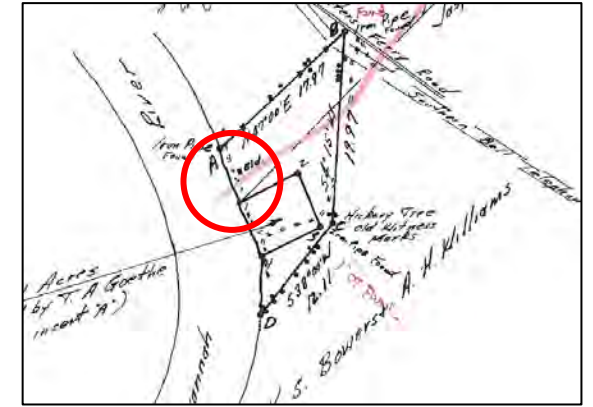
# Hampton County / Jasper County Line Monument Monument A



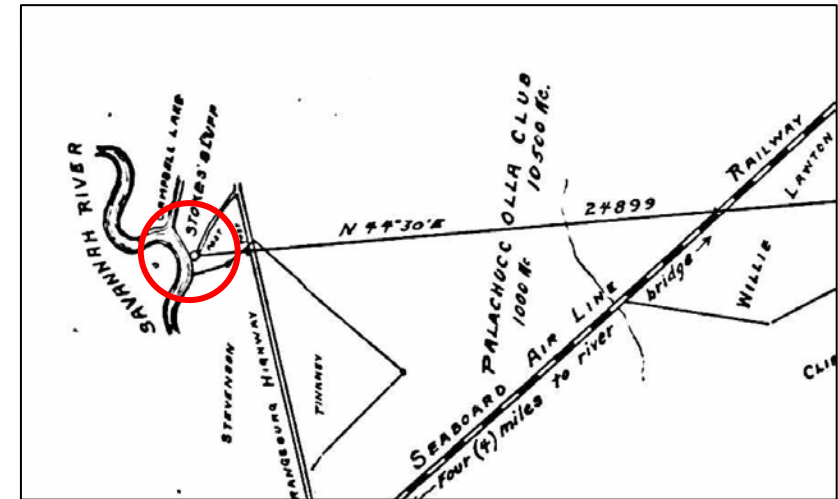
(PB-PG 5-70)



(PB-PG 8-288)

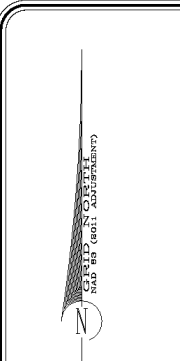


(PB-PG 8-287)



(Sheet 1 of 10)





NOTE:  
FOR "ADDITIONAL NOTES" SEE SHEET 1.

**COUNTY LINE MONUMENT SUMMARY TABLE NAD 83 (2011 Adj.)**

Monument	Northing (Ft.)	Easting (Ft.)	Description
A-1*	262784.20	1914237.07	#8 RBR. W/ALUM. DISK
A-2*	262808.00	1915337.83	#8 RBR. W/ALUM. DISK
A-3*	266928.33	1916282.62	#8 RBR. W/ALUM. DISK
A-4*	270407.74	1921966.63	#8 RBR. W/ALUM. DISK
A-5*	272351.76	1923556.11	#8 RBR. W/ALUM. DISK
A-6*	277061.11	1928133.57	#8 RBR. W/ALUM. DISK
A-7*	279106.84	1932022.01	#8 RBR. W/ALUM. DISK
B*	280419.73	1931398.13	#8 RBR. W/ALUM. DISK
C*	282698.50	1936177.58	#8 RBR. W/ALUM. DISK
C-1*	287453.41	1941540.99	#8 RBR. W/ALUM. DISK
C-2*	292373.12	1947333.35	#8 RBR. W/ALUM. DISK
C-2a	292963.41	1948238.39	CONCRETE MONUMENT
C-3*	295688.74	1951484.62	#8 RBR. W/ALUM. DISK
C-4*	300148.48	1956488.92	#8 RBR. W/ALUM. DISK
C-5*	304484.09	1961594.27	#8 RBR. W/ALUM. DISK
C-6*	307950.50	1966757.07	#8 RBR. W/ALUM. DISK
C-7*	313232.75	1971648.61	#8 RBR. W/ALUM. DISK
D-1*	316889.88	1978202.58	#8 RBR. W/ALUM. DISK
D-2*	318979.22	1979829.81	#8 RBR. W/ALUM. DISK
D-3*	320649.81	1980494.79	#8 RBR. W/ALUM. DISK
D-3*	324016.03	1984587.55	"O" OPEN TOP
E-1*	324910.87	1985381.07	#8 RBR. W/ALUM. DISK
E-2*	328233.17	1988871.56	#8 RBR. W/ALUM. DISK
E-3*	331917.15	1992820.41	#8 RBR. W/ALUM. DISK
E-3*	332951.88	1993922.03	#8 RBR. W/ALUM. DISK

**LINE TABLE**

LINE	BEARING	DIST
L1	N44° 11' 11" E	±277

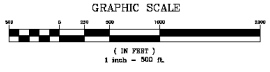
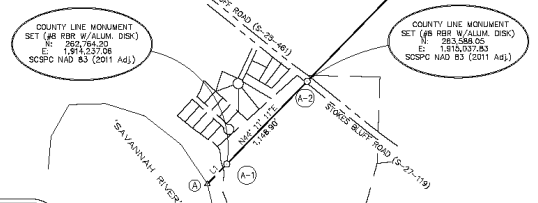
I HEREBY STATE THAT TO THE BEST OF MY PROFESSIONAL KNOWLEDGE, INFORMATION, AND BELIEF, THE SURVEY SHOWN HEREON WAS MADE IN ACCORDANCE WITH THE REQUIREMENTS OF THE "STANDARDS OF PRACTICE MANUAL FOR SURVEYING IN SOUTH CAROLINA" (ESTIMATED DATE 04/2008) AS PER ARTICLE 6, REGULATION 48-450 F.A.C. THAT THIS MAP OR PLAN IS INTENDED ONLY TO SHOW INFORMATION SUPPORTED FOR A SPECIFIC STATED PURPOSE, THAT SURVEY LINES BEYOND HEREON ARE BASED ON ACTUAL FIELD SURVEY EVIDENCE AND/OR MEASUREMENTS WHICH MEET OR EXCEED THE REQUIREMENTS FOR A CLASS A SURVEY AS SPECIFIED HEREIN.

NOTE:  
THE START OF THE COUNTY LINE AS REFERENCED ON PLATS BK. /PG. 1/76 & 0/00A,  
MONUMENT "A" WAS UNABLE TO BE SET DUE TO BEING INACCESSIBLE &/or (SURVEYED)  
AND CONTINUES FROM APPROXIMATE CENTER OF SAVANNAH RIVER.

NOT VALID UNLESS SIGNED BY REP. R.S.

**REVIEW ONLY ~**

ENDORSED SEAL



DATE: 4/27/2023  
DRAWN BY: AWK  
DESIGNED BY: AWK  
CHECKED BY: AWK  
APPROVED BY: J.L.L.  
PROJECT: 202204  
SHEET: 2 OF 10

**CORNERSTONE**  
SURVEYING & ENGINEERING, INC.  
120 Thomas Bluff Rd. • Summerville • South Carolina • 29486 • Phone: 843-871-9388

A PART OF A CORNER OF THE HAMPTON-JASPER COUNTY LINE STARTING AT A POINT IN THE SAVANNAH RIVER" BEARING NORTHEASTERLY THROUGH DODD HILL ROAD (U.S. HWY. 301) TO A POINT NEAR THE CENTER OF THE SAVANNAH RIVER AND BEARING SOUTHWESTERLY TO A POINT NEAR THE CENTER OF THE SAVANNAH RIVER. THE HAMPSON COUNTY & JASPER COUNTY BEING LOCATED IN THE SOUTHERN CORNER OF THE STATE OF SOUTH CAROLINA.

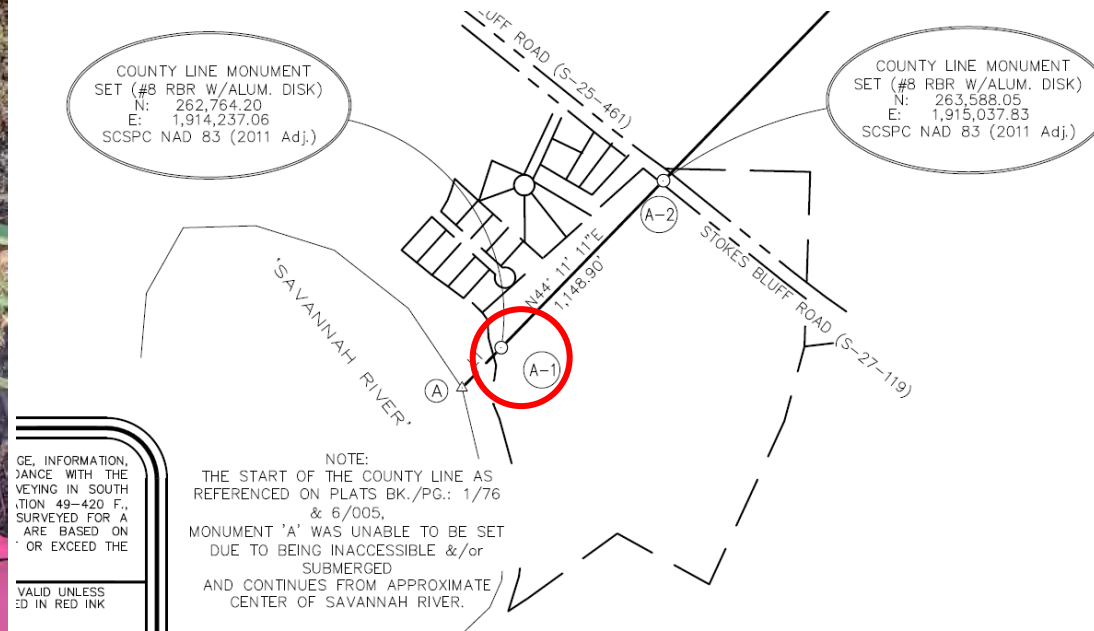
Date of Map: 4/27/2023  
Drawn by: AWK  
Designed by: AWK  
Checked by: AWK  
Approved by: J.L.L.  
F.A.C. # 64-81-938  
S.A.C. # 64-81-938  
P.L.B. # 64-81-938

Date: Revision No.:

Proj. No.: 20220  
Sheet 2 Of 10

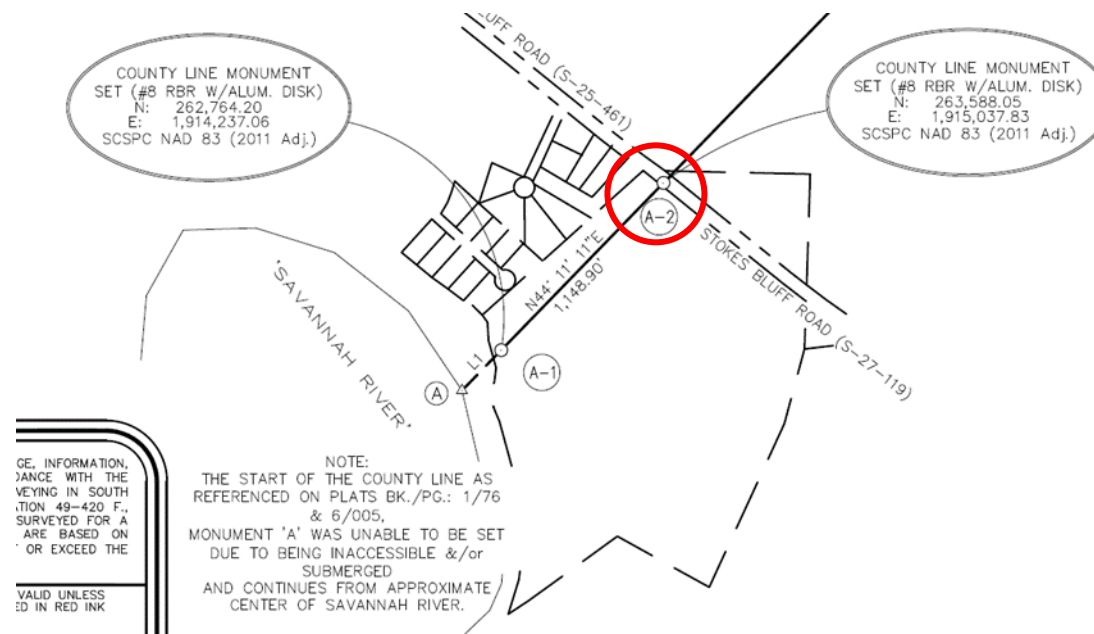
# Hampton County / Jasper County Line Monument Monument A-1

(Sheet 2 of 10)



# Hampton County / Jasper County Line Monument Monument A-2

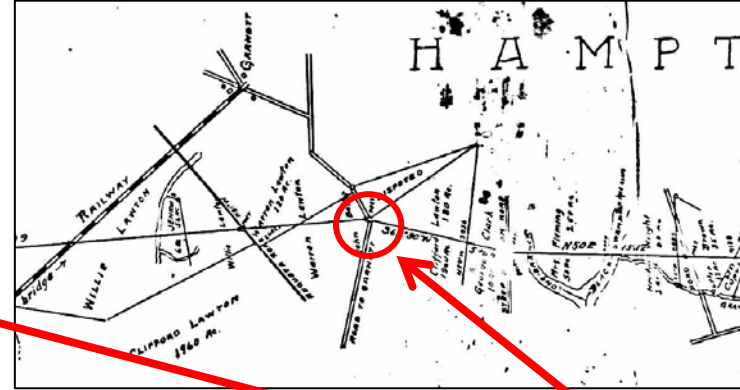
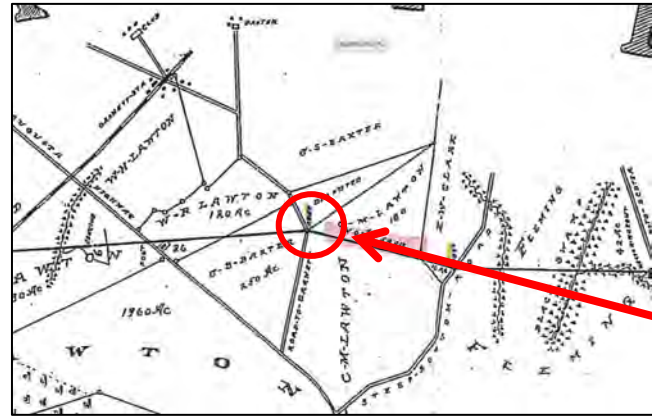
(Sheet 2 of 10)







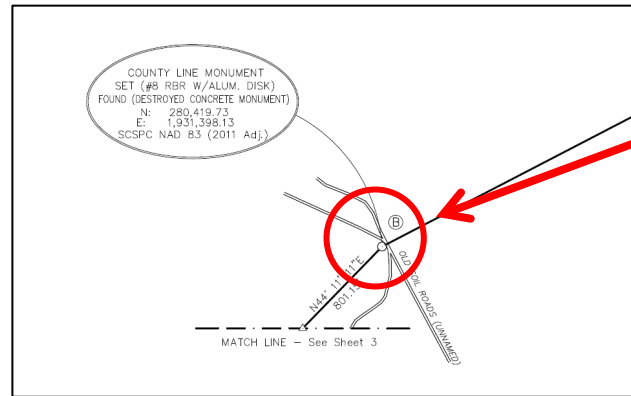
# Hampton County / Jasper County Line Monument Monument B



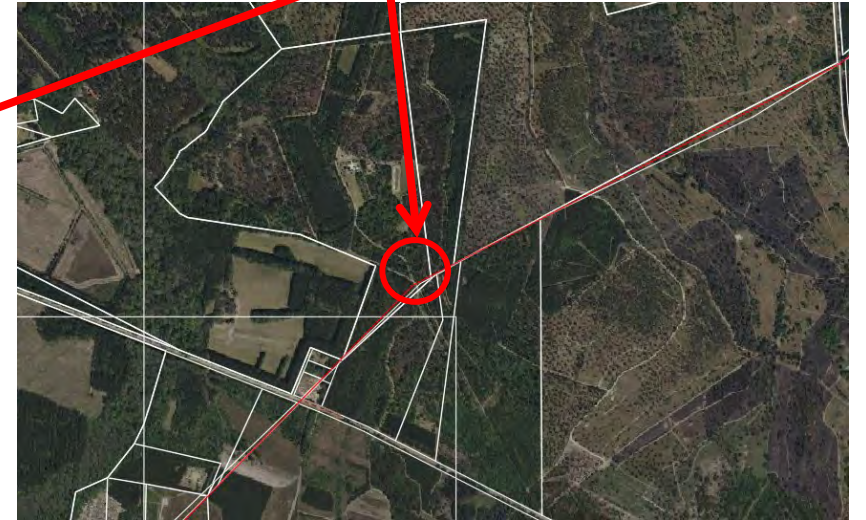
Former Destroyed  
Concrete Monument



Monument "B"

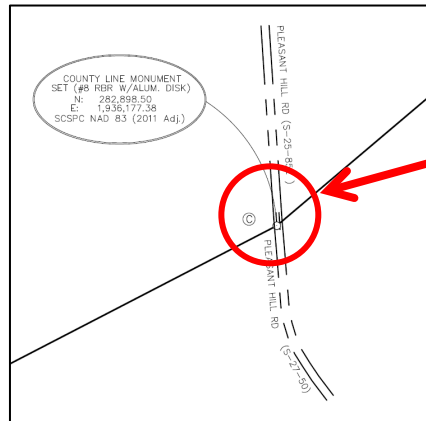
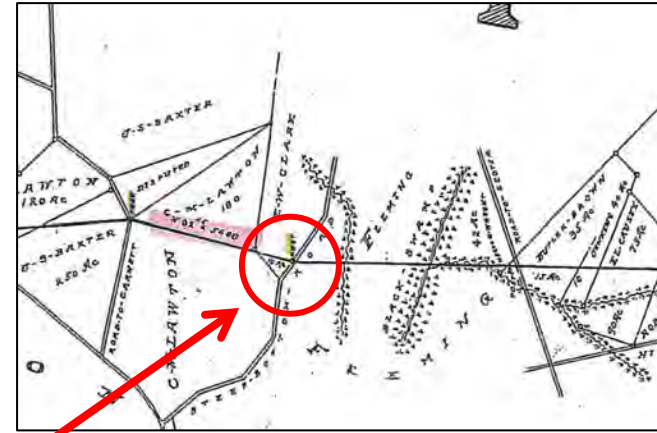
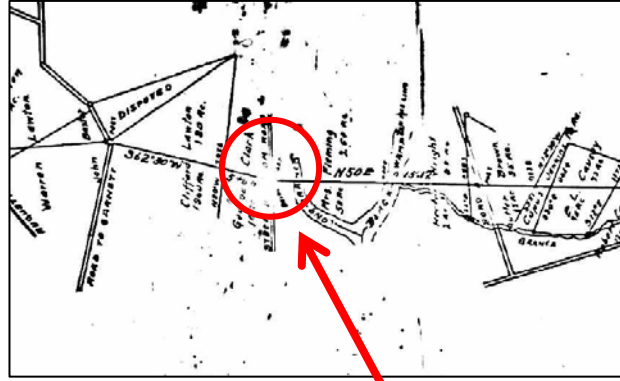


(Sheet 4 of 10)





# Hampton County / Jasper County Line Monument Monument C



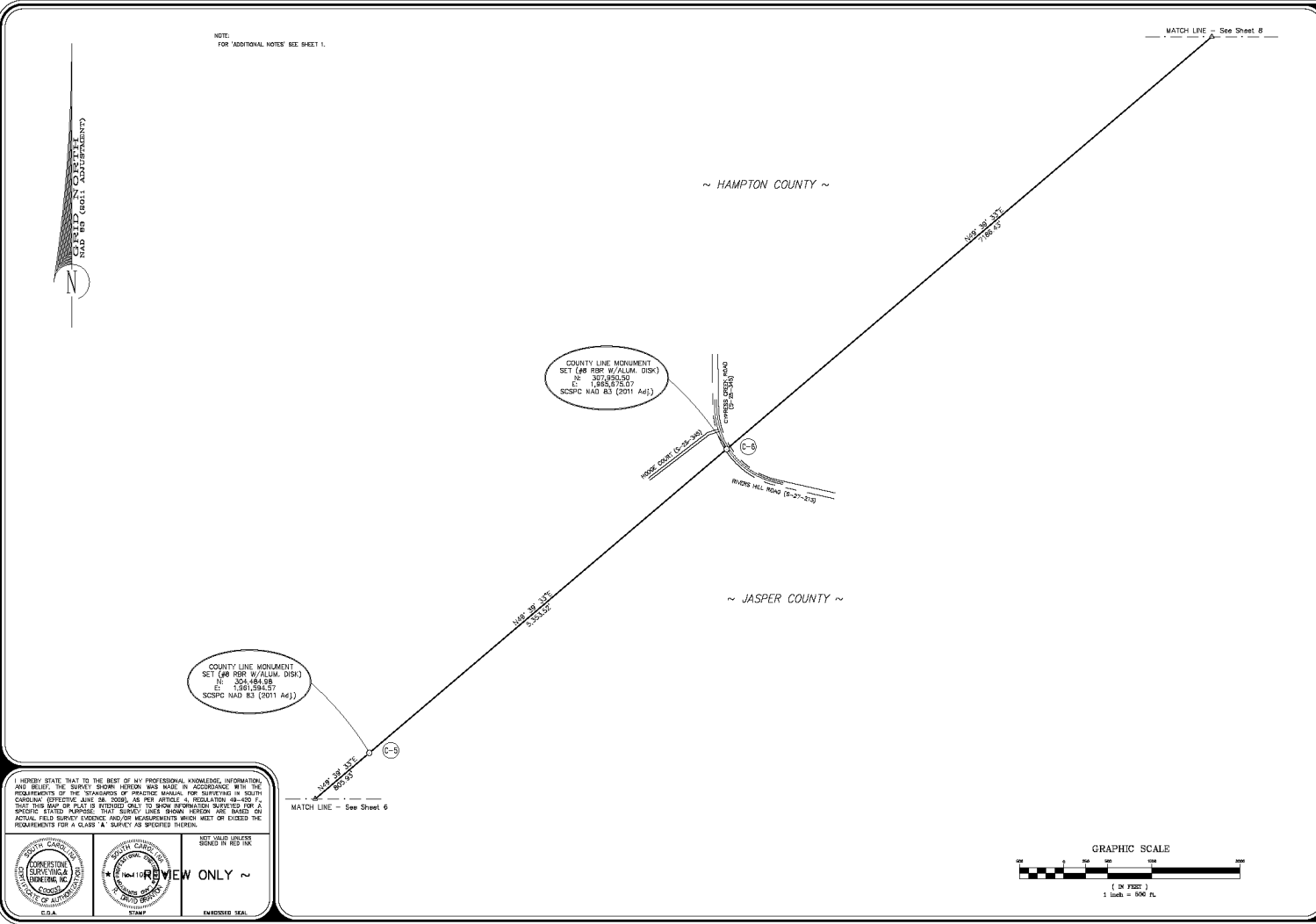
(Sheet 4 of 10)

Monument "C"









NOTE:  
FOR ADDITIONAL NOTES SEE SHEET 1.

MATCH LINE - See Sheet 8

~ HAMPTON COUNTY ~

~ JASPER COUNTY ~

COUNTY LINE MONUMENT  
SET (#8 RBR W/ALUM. DISK)  
N 307,295.00  
E 1,895,675.07  
SCSPPC NAD 83 (2011 Ad1)

COUNTY LINE MONUMENT  
SET (#8 RBR W/ALUM. DISK)  
N 304,484.28  
E 1,561,584.57  
SCSPPC NAD 83 (2011 Ad1)



I HEREBY STATE THAT TO THE BEST OF MY PROFESSIONAL KNOWLEDGE, INFORMATION, AND BELIEF, THE SURVEY SHOWN HEREON WAS MADE IN ACCORDANCE WITH THE REQUIREMENTS OF THE "STANDARDS OF PRACTICE MANUAL FOR SURVEYING IN SOUTH CAROLINA" EFFECTIVE DATE 04/2008, AS PER ARTICLE 4, REGULATION 48-452 F. THAT THIS MAP OR PLAN IS INTENDED ONLY TO SHOW INFORMATION SUPPORTED FOR A SPECIFIC STATED PURPOSE. THAT SURVEY LINES SHOWN HEREON ARE BASED ON ACTUAL FIELD SURVEY EVIDENCE AND/OR MEASUREMENTS WHICH MEET OR EXCEED THE REQUIREMENTS FOR A CLASS A SURVEY AS SPECIFIED HEREON.



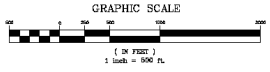
NOT VALID UNLESS SIGNED BY REP. RA.  
**VIEW ONLY**  
ENDORSED SEAL

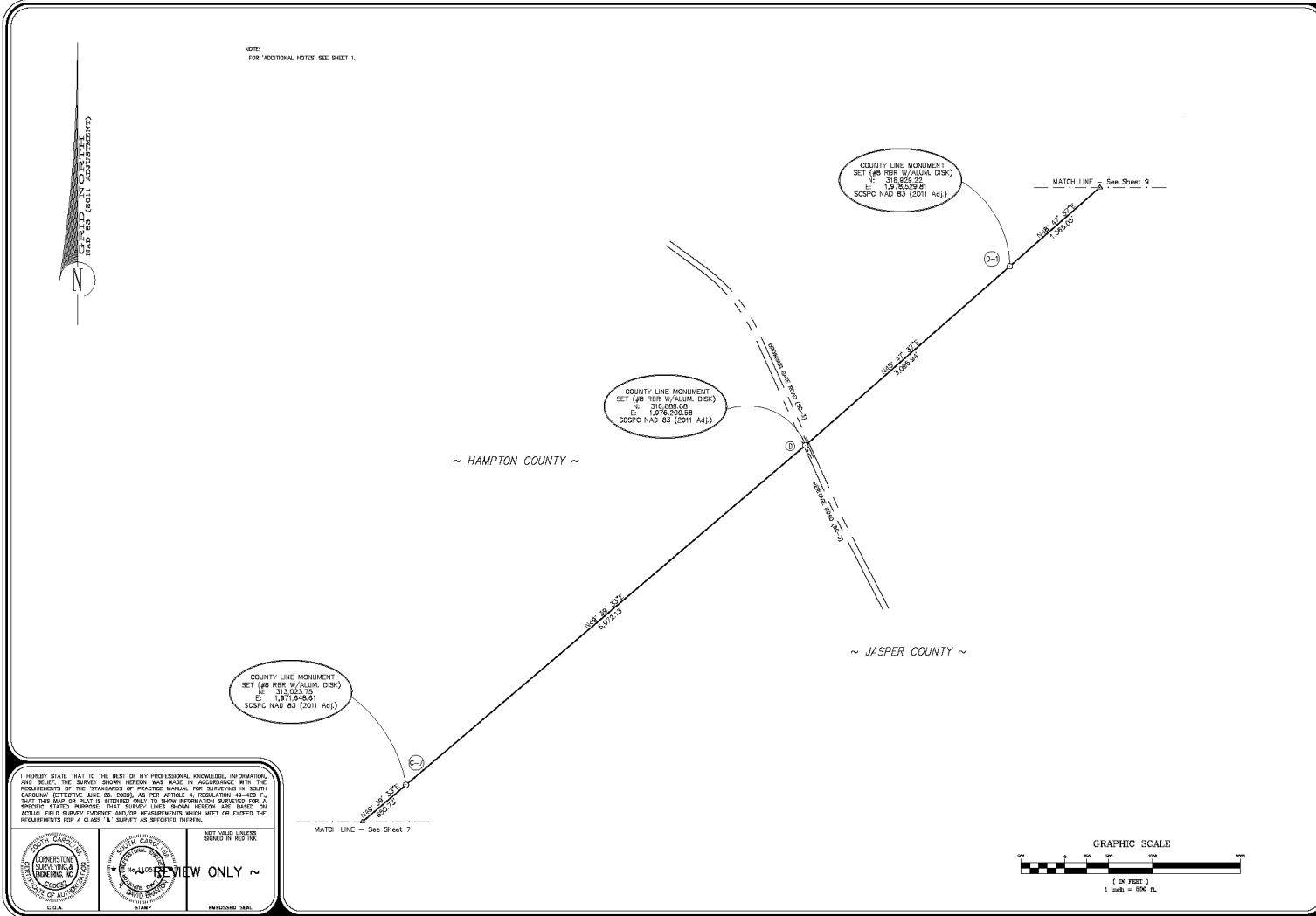
DATE: 4/27/2023  
DRAWN BY: AWK  
DESIGNED BY: AWK  
CHECKED BY: RCB  
APPROVED BY: RCB  
FILED BY: J. L. L. L.  
PROJECT: 20220  
SHEET: 7 OF 10

**CORNERSTONE**  
SURVEYING & ENGINEERING, INC.  
120 Boone High Rd., Stoneville, TN 37880 • Phone: 615-871-9733

"A PART OF A BOUNDARY OF THE HAMPTON-JASPER COUNTY LINE" (SOUTH CAROLINA REGISTERED PROFESSIONAL ENGINEER J. L. L. L. HAS BEEN IDENTIFIED AS BEING A REMAINING PORTION OF AN OLD SURVEY. THE SURVEY WAS CONDUCTED IN 1840 AND THE BOUNDARY WAS LOCATED IN THE SOUTHERN CORNER OF THE STATE OF SOUTH CAROLINA.

Date of Map: 4/27/2023  
Drawn by: AWK  
Designed by: AWK  
Checked by: RCB  
Approved by: RCB  
File by: J. L. L. L.  
Date: Revision No.  
Proj. No.: 20220  
Sheet 7 Of 10





I, HENRY STATE, BEAT TO THE BEST OF MY PROFESSIONAL KNOWLEDGE, INFORMATION, AND BELIEF, THE SURVEY SHOWN HEREON WAS MADE IN ACCORDANCE WITH THE REQUIREMENTS OF THE STANDARDS OF PRACTICE MANUAL FOR SURVEYING IN SOUTH CAROLINA, EFFECTIVE DATE OR EDITION AS FOR ARTICLES 48-400-7. THAT THIS MAP OR PLAN IS INTENDED ONLY TO SHOW INFORMATION SUPPORTED FOR A SPECIFIC STATED PURPOSE. THAT SURVEY LINES SHOWN HEREON ARE BASED ON ACTUAL FIELD SURVEY EVIDENCE AND/OR MEASUREMENTS WHICH MEET OR EXCEED THE REQUIREMENTS FOR A CLASS & SURVEY AS SPECIFIED HEREON.

NOT VALID UNLESS BOUND IN RED INK

VIEW ONLY

STAMP

ENGR'S SEAL



Cornerstone Surveying & Engineering, Inc.  
1300 Brown Bluff Rd., S. Columbia, SC 29162  
Tel: 803.733.1111  
Fax: 803.733.1112  
www.cornerstone-surveying.com

**CORNERSTONE**  
SURVEYING & ENGINEERING, INC.  
1300 Brown Bluff Rd. • S. Columbia • SC 29162 • Phone: 803-733-1111

IS PART OF A PORTION OF THE  
HAMPTON-JASPER COUNTY LINE  
STARTING AT A POINT IN THE ORIGINAL STATE LINE,  
THEY BEARING NORTHEASTERLY THROUGH "COTTON HILL ROAD" (U.S. HIGHWAY 301)  
THROUGH "SANDY CREST" (UNPAVED ROAD) TO A POINT NEAR "SANDY CREST" (UNPAVED ROAD) (E.C. 1997, 3)  
FROM NORTHEASTERLY TO A POINT NEAR "SANDY CREST" (UNPAVED ROAD) (E.C. 1997, 3)  
FROM NORTHEASTERLY TO A POINT IN THE "SANDY CREST" (UNPAVED ROAD) (E.C. 1997, 3)  
THE SOUTHERN CORNER OF THE STATE OF SOUTH CAROLINA.

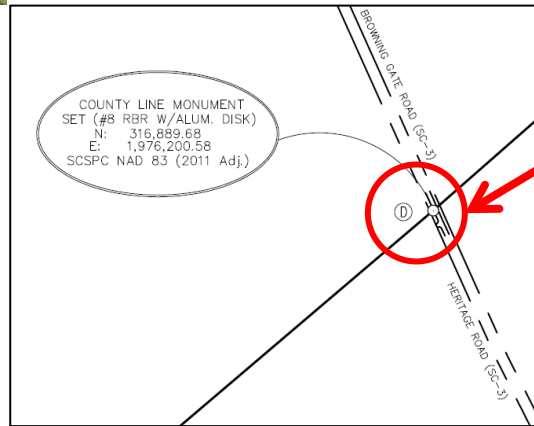
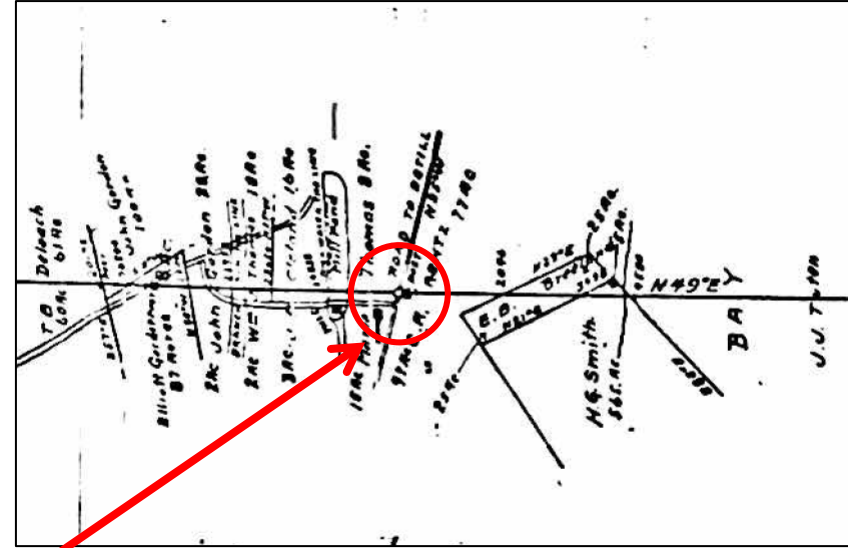
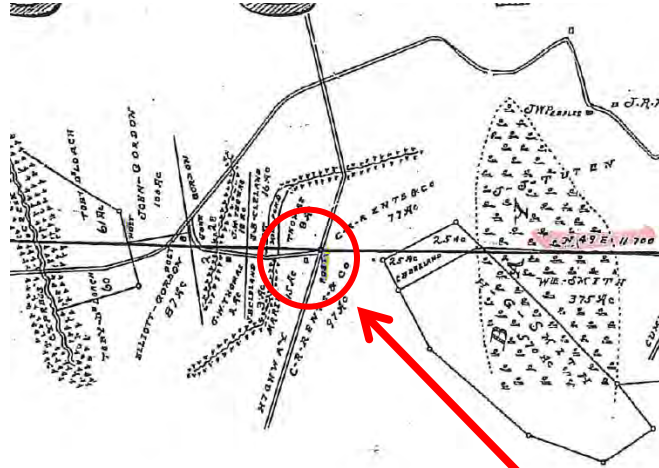
Date of Map:  
4/27/2023

Drawn: AWK  
Checked: AWK  
Designed: AWK  
Reviewed: AWK  
CAD File: 2023 HAMPTON-JASPER.lyr  
P.L. & P.C.  
P.B. & P.C.  
P.L. & P.C.  
P.B. & P.C.

Date	Revision No.

Proj. No.: 20020  
Sheet 8 Of 10

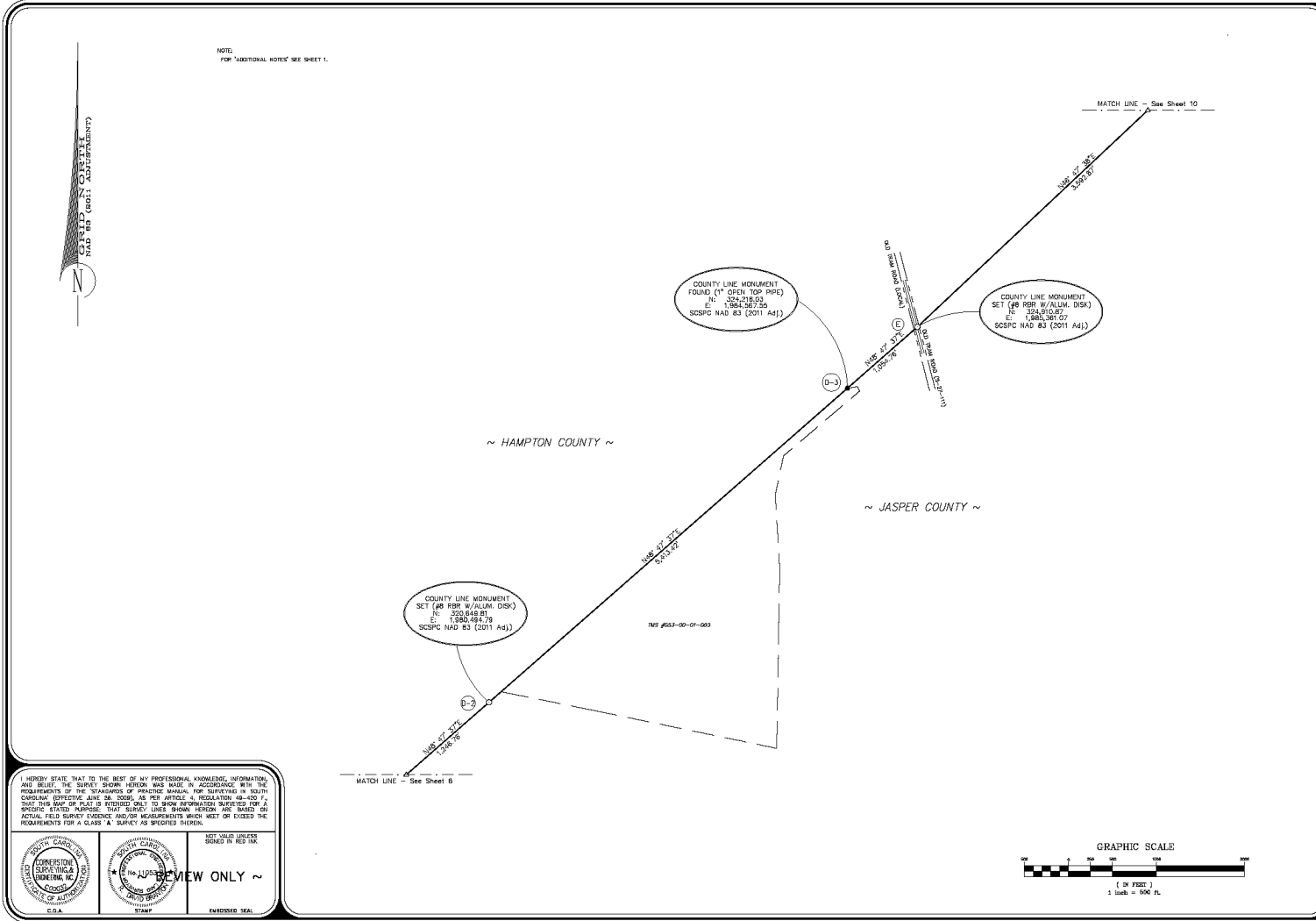
# Hampton County / Jasper County Line Monument Monument D



(Sheet 8 of 10)

Monument "D"





HENRY STATE THAT TO THE BEST OF NY PROFESSIONAL KNOWLEDGE, INFORMATION, AND BELIEF, THE SURVEY SHOWN HEREON WAS MADE IN ACCORDANCE WITH THE REQUIREMENTS OF THE STANDARDS AND PRACTICE MANUAL FOR SURVEYING IN SOUTH CAROLINA. OFFICER ASKS OR SWEARS AS PER ARTICLE 16, REGULATION 68-402.7, THAT THIS MAP OR PLAN IS PREPARED ONLY TO SHOW INFORMATION SUBMITTED FOR A PROPOSED EASEMENT. THIS SURVEY LINES SHOW HEREON HAS BASED ON ACTUAL FIELD SURVEY EVIDENCE AND/OR MEASUREMENTS WHICH MET OR EXCEED THE REQUIREMENTS FOR A CLASS 'A' SURVEY AS SPECIFIED THEREIN.

**PROFESSIONAL SEAL**

**D.A.A.**

**PROFESSIONAL SEAL**

**D.A.A.**

NOT VALID UNLESS  
SEALED IN RED INK.

**NO JUDICIAL REVIEW ONLY ~**

ENGRIEDER SEAL

**CORNERSTONE SURVEYING & ENGINEERING, INC.**  
120 Brown Bridge Rd. • Summerville • South Carolina • 29486 • Phone: 803-811-7928

**DATE OF MAP:**  
4/27/2023

Drawn: AWK  
 Design: AWK  
 Checked: RJD  
 Supervised: DSB

**CAD File:** 2023 HAMPTON-JASPER.dwg  
**P.L.S. & P.G.** \_\_\_\_\_  
**P.L.S. & P.G.** \_\_\_\_\_

**Date:** \_\_\_\_\_ **Revision No.:** \_\_\_\_\_

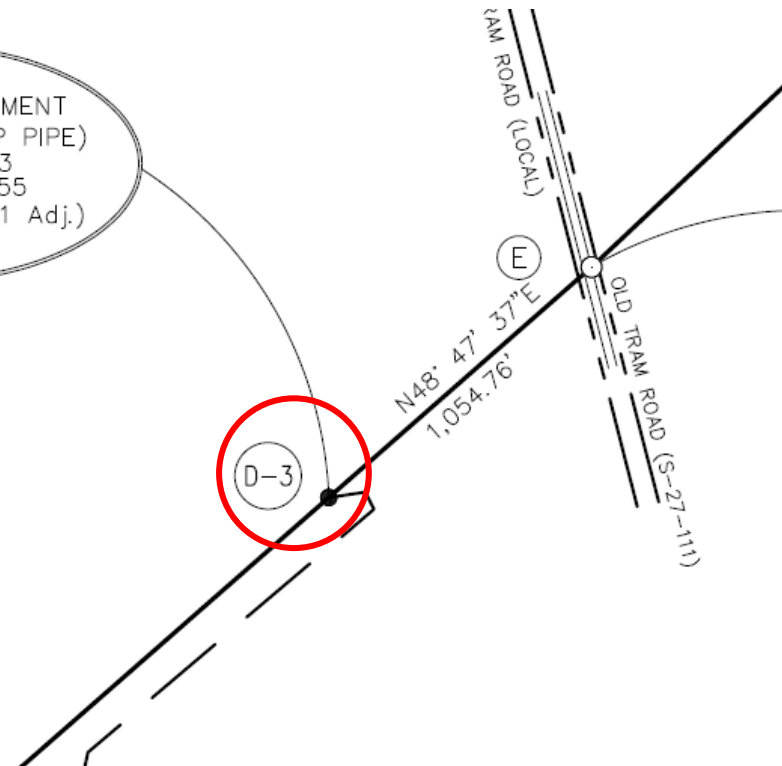
**Proj. No.:** 200220  
**Sheet** 9 **Of** 10

# Hampton County / Jasper County Line Monument Monument D-3

(Sheet 9 of 10)

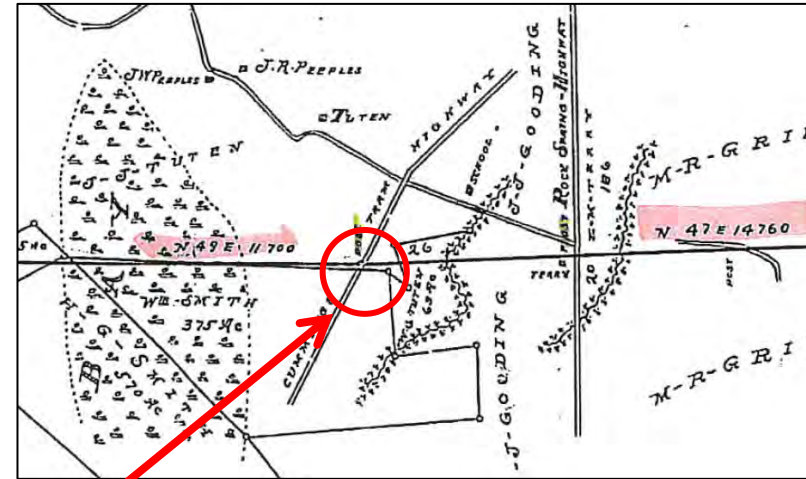
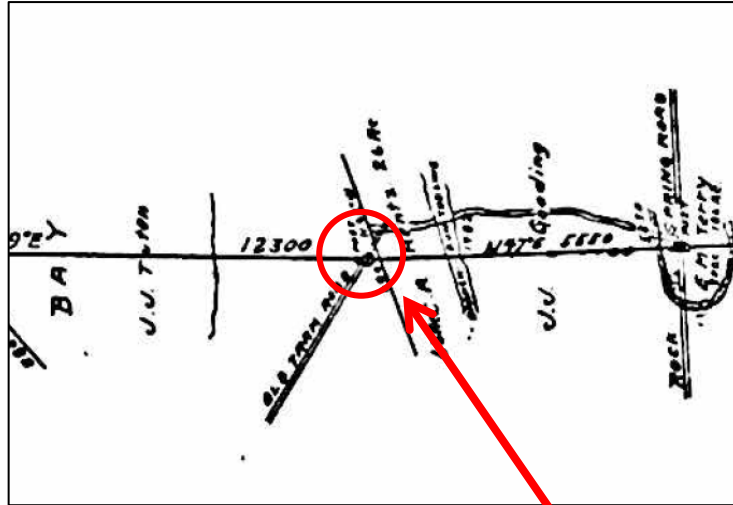


COUNTY LINE MONUMENT  
FOUND (1" OPEN TOP PIPE)  
N: 324,216.03  
E: 1,984,567.55  
SCSPC NAD 83 (2011 Adj.)

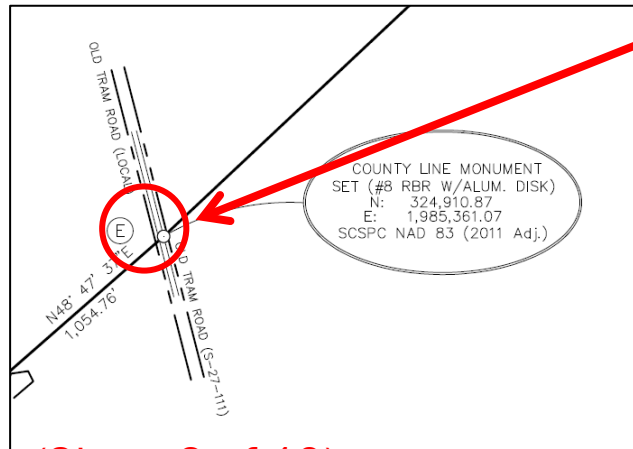




# Hampton County / Jasper County Line Monument Monument E



Monument "E"



(Sheet 9 of 10)





NOTE:  
FOR "ADDITIONAL NOTES" SEE SHEET 1.

~ HAMPTON COUNTY ~

~ HAMPTON COUNTY ~

~ JASPER COUNTY ~

COSSAWATONNE RIVER

COUNTY LINE MONUMENT  
SET (AS PER W/ALUM. DISK)  
N: 332,951.56  
E: 1,993,922.53  
SCSPC NAD 83 (2011 Ad.)

COUNTY LINE MONUMENT  
SET (AS PER W/ALUM. DISK)  
N: 331,917.16  
E: 1,992,820.41  
SCSPC NAD 83 (2011 Ad.)

COUNTY LINE MONUMENT  
SET (AS PER W/ALUM. DISK)  
N: 328,233.17  
E: 1,988,897.58  
SCSPC NAD 83 (2011 Ad.)

REMARKS OF COUNTY LINE SURVEY:  
1/2" & 3/4" MONUMENTS WERE PLACED TO BE FOUND BY THE  
PLACEMENT OF THE MONUMENTS TO THE CORNER OF  
THE ADJACENT CENTER OF COSSAWATONNE RIVER.

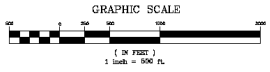
GRAVE HIGHLAND (US 278)

GRAVE HIGHLAND (US 278)

I HEREBY STATE THAT TO THE BEST OF MY PROFESSIONAL KNOWLEDGE, INFORMATION,  
AND BELIEF, THE SURVEY SHOWN HEREON WAS MADE IN ACCORDANCE WITH THE  
REQUIREMENTS OF THE "STANDARD OF PRACTICE MANUAL FOR SURVEYING IN SOUTH  
CAROLINA" (EFFECTIVE DATE 08/2008) AS PER ARTICLE 4, REGULATION 48-430 F.,  
SAY THAT THIS MAP OR PLAN IS INTENDED ONLY TO SHOW INFORMATION SURVEYED FOR A  
SPECIFIC STATED PURPOSE. THAT SURVEY LINES SHOWN HEREON ARE BASED ON  
ACTUAL FIELD SURVEY EVIDENCE AND DO NOT REPRESENT ANY OTHER SURVEY OR  
REQUIREMENTS FOR A CLASS "A" SURVEY AS SPECIFIED THEREIN.



NOT VALID UNLESS  
SIGNED IN RED INK.  
**REVIEW ONLY**  
ENDORSED SEAL



DATE: 4/27/2023  
DRAWN BY: AWK  
DESIGNED BY: AWK  
CHECKED BY: AWK  
APPROVED BY: AWK  
CADD FILE: 2023  
P.L.S. & P.C.  
FILEBOARD APP.#

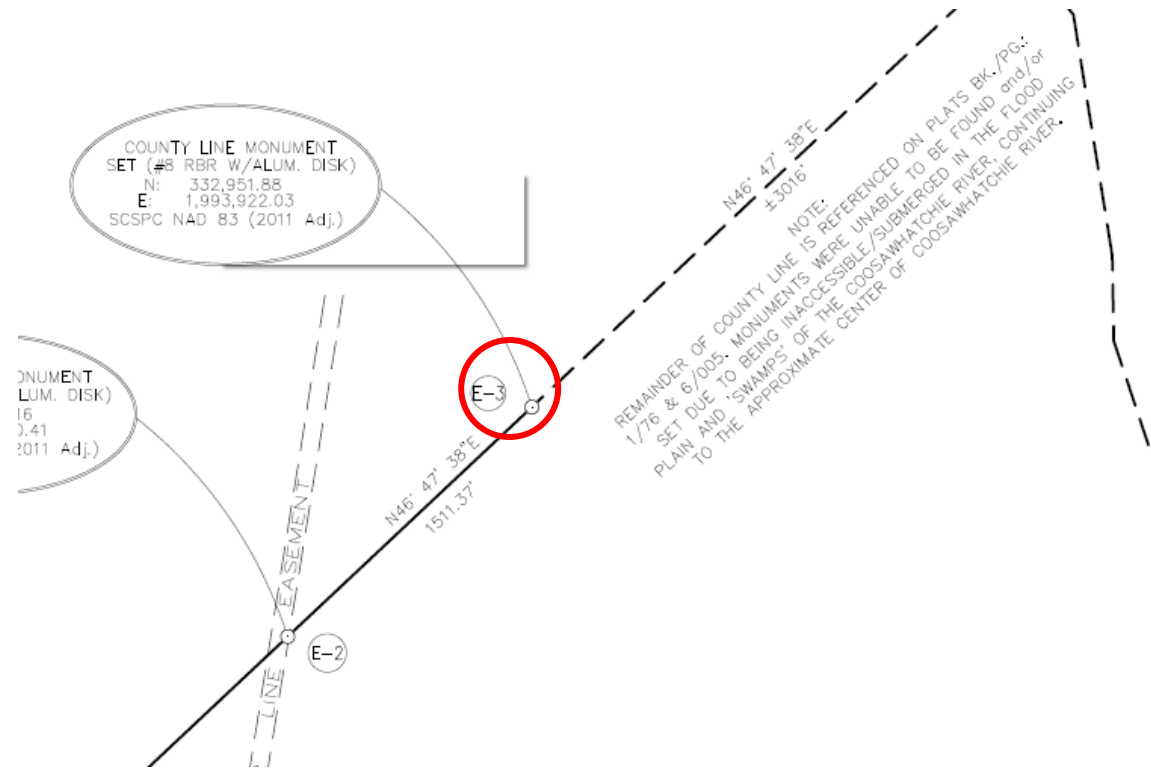
**CORNERSTONE**  
SURVEYING & ENGINEERING, INC.  
1542 Boone Ridge Rd., Summerville, South Carolina 29486 • Phone: 843-878-8728

A PART OF A PROPERTY OF THE  
HAMPTON-JASPER COUNTY LINE  
SARASWATI RIVER, STARTING AT A POINT IN THE HAMPTON STATE LINE,  
THEN RUNNING NORTHEASTERLY THROUGH COTTON HILL ROAD (U.S. HWY. 321)  
TOWARD COUNTY LINE APPROXIMATELY TO A POINT NEAR PLEASANT HILL ROAD (S.C. HWY. 321),  
THAT INTERSECTS WITH A POINT NEAR GRAVE HIGHLAND (U.S. HWY. 278),  
THAT INTERSECTS WITH A POINT NEAR GRAVE HIGHLAND (U.S. HWY. 278),  
THEN RUNNING NORTHEASTERLY TO A POINT IN THE COSSAWATONNE RIVER, THE COUNTY  
LINE BETWEEN HAMPTON COUNTY & JASPER COUNTY BEING LOCATED IN  
THE SOUTHERN CORNER OF THE STATE OF SOUTH CAROLINA.

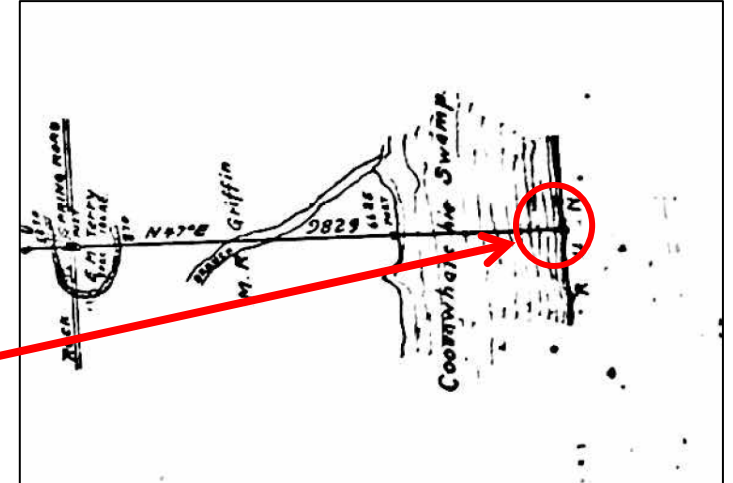
Date of Map: 4/27/2023  
Drawn: AWK  
Designed: AWK  
Checked: AWK  
Approved: AWK  
CADD File: 2023  
P.L.S. & P.C.  
FILEBOARD APP.#  
Date: \_\_\_\_\_  
Revised No. \_\_\_\_\_  
Proj. No.: 20020  
Sheet 1001 10

# Hampton County / Jasper County Line Monument Monument E-3

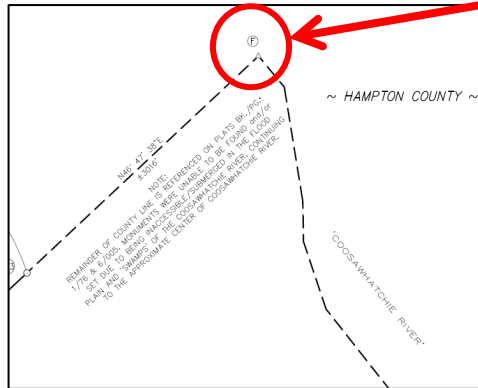
(Sheet 10 of 10)



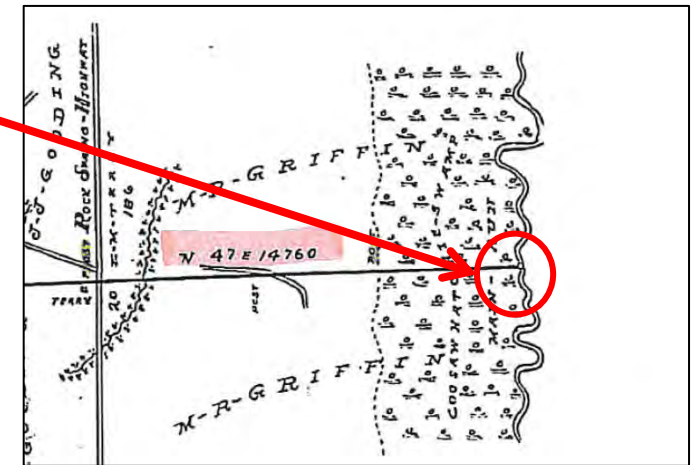
# Hampton County / Jasper County Line Monument Monument F



Monument "F"



(Sheet 10 of 10)



# **WHAT HAPPENS NEXT:**

- PUBLIC MEETING**
- CERTIFICATION OF PLAT**
- NOTIFY AFFECTED PARTIES**
- 60 DAY APPEAL WINDOW**
- RECORD/FILE PLAT UNDER COVER LETTER**
- DATE OF LETTER IS THE EFFECTIVE DATE OF THE BOUNDARY**

# Project Page:

<https://rfa.sc.gov/programs-services/geodetic/county/HAMP-JASP>

## QUESTIONS?

Or Information You Would Like to Provide?

**PLEASE CALL: [803-734-3793](tel:803-734-3793)**

**or EMAIL: [boundary@rfa.sc.gov](mailto:boundary@rfa.sc.gov)**

**We Will Work to Address Questions Promptly or Direct  
Questions to the Appropriate Agency or Jurisdictional Entity**

