

**NOTES**

1. THIS IS NOT A VALID, TRUE COPY OF THIS DOCUMENT UNLESS IT BEARS THE ORIGINAL SIGNATURE, SIGNATURE DATE, AND THE RAISED, EMBOSSED SEAL OF THE REGISTERED PROFESSIONAL LAND SURVEYOR NOTED HEREON.
2. THE PURPOSE OF THIS PLAT IS TO MAP THE SECTION OF THE HAMPTON-JASPER COUNTY LINE STARTING AT THE SAVANNAH RIVER THEN RUNNING EAST TOWARDS THE COOSAWATCHIE RIVER. IT IS NOT INTENDED NOR SHOULD BE CONSTRUED TO BE A BOUNDARY SURVEY OR BOUNDARY PLAT OF THE PROPERTY PARCELS ADJACENT TO OR NEAR THE AFOREMENTIONED COUNTY LINE. THE HAMPTON-JASPER COUNTY LINE AND BOUNDARY LINES OF THE ADJOINING PROPERTIES MAY BE CONGRUENT IF AND ONLY IF SO SPECIFIED BY THE SOUTH CAROLINA LEGISLATIVE ACT(S) THAT ESTABLISH AND DESCRIBE OR DEFINE THE COUNTY LINE AS IT IS BEING PLATTED HEREON. HOWEVER, IN NO WAY IS THIS SURVEY OR PLAT OF THIS PORTION OF THE HAMPTON-JASPER COUNTY LINE GIVING WARRANTY TO THE TITLE PROPERTY BOUNDARIES OF THE ADJACENT PARCELS BEING SHOWN OR REFERENCED HEREON.
3. THE PARCEL INFORMATION REFERENCED ON THIS PLAT IS ONLY THAT USED TO SHOW THE PUBLIC RECORD OWNERSHIP OF THE PROPERTIES ADJOINING OR NEAR THE HAMPTON-JASPER COUNTY LINE BEING FOUND ON RECORD, RESPECTIVELY, IN THE HAMPTON COUNTY REGISTER OF DEEDS (R.O.D.) AND THE JASPER COUNTY REGISTER OF DEEDS (R.O.D.) AND DOES NOT CONSTITUTE A TITLE SEARCH, TITLE ABSTRACT, OR TITLE OPINION FOR ANY OF THE PROPERTIES NOTED HEREON.
4. THIS PLAT HAS BEEN DONE FOR THE STATE OF SOUTH CAROLINA IN ACCORDANCE WITH THEIR PLANNED USE AND PURPOSE OF THE INFORMATION SHOWN HEREON. ALL OTHER PARTIES ARE SUBSEQUENTLY PUT ON NOTICE AS TO THE LIMITED DEGREE OF RELIANCE UPON THIS PLAT BY THIRD PROPERTIES.
5. NO SURVEYS, EVALUATION OR DELINEATION OF ANY ENVIRONMENTAL ISSUES OR MATTERS SUCH AS HAZARDOUS WASTE CONTAMINATION, SUBSURFACE CHARACTERISTICS (i.e. FILL DIRT, etc.), WETLANDS, OR ENDANGERED SPECIES, etc. HAVE BEEN DONE FOR THE SUBJECT PROPERTIES, AND THIS SURVEY DOES NOT CERTIFY AS TO THE PRESENCE OR ABSENCE OF SUCH CONDITIONS.  
FOR ADDITIONAL NOTES SPECIFIC TO THIS SURVEY AND THE INFORMATION FOR THIS PLAT AND THE COUNTY BOUNDARY LINE SHOWN HEREON, SEE SHEETS 2 thru 10 of 10.
6. ALL 'NORTHING' (N;) and 'EASTING' (E;) COORDINATES SHOWN ON THIS PLAT ARE EXPRESSLY GIVEN AS SOUTH CAROLINA STATE PLANE COORDINATES (SCSPP), ZONE 3900, NAD 83, 2011 ADJUSTMENT (FTL), SHEET 2 of 7 OF THIS PLAT PROVIDES A 'COUNTY LINE MONUMENT SUMMARY' TABLE OF THE SOUTH CAROLINA STATE PLANE COORDINATE DATA ALONG THE MAPPED SECTION OF THE EXISTING COUNTY LINE.
7. THE ORIENTATION OF THIS PLAT IS 'SCSPP GRID NORTH', NAD 83, 2011 ADJUSTMENT, ZONE 3900. ALL LINES, DIMENSIONS, AND DISTANCES SHOWN HEREON ARE SCALED TO GRID. NO COMBINED SCALE FACTOR HAS BEEN CALCULATED FOR THIS PLAT.
8. THIS PLAT.

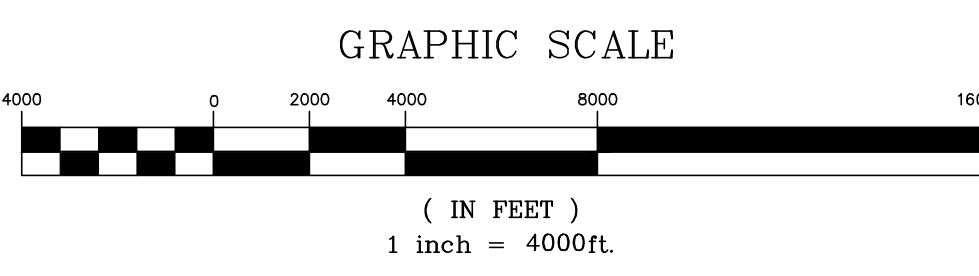
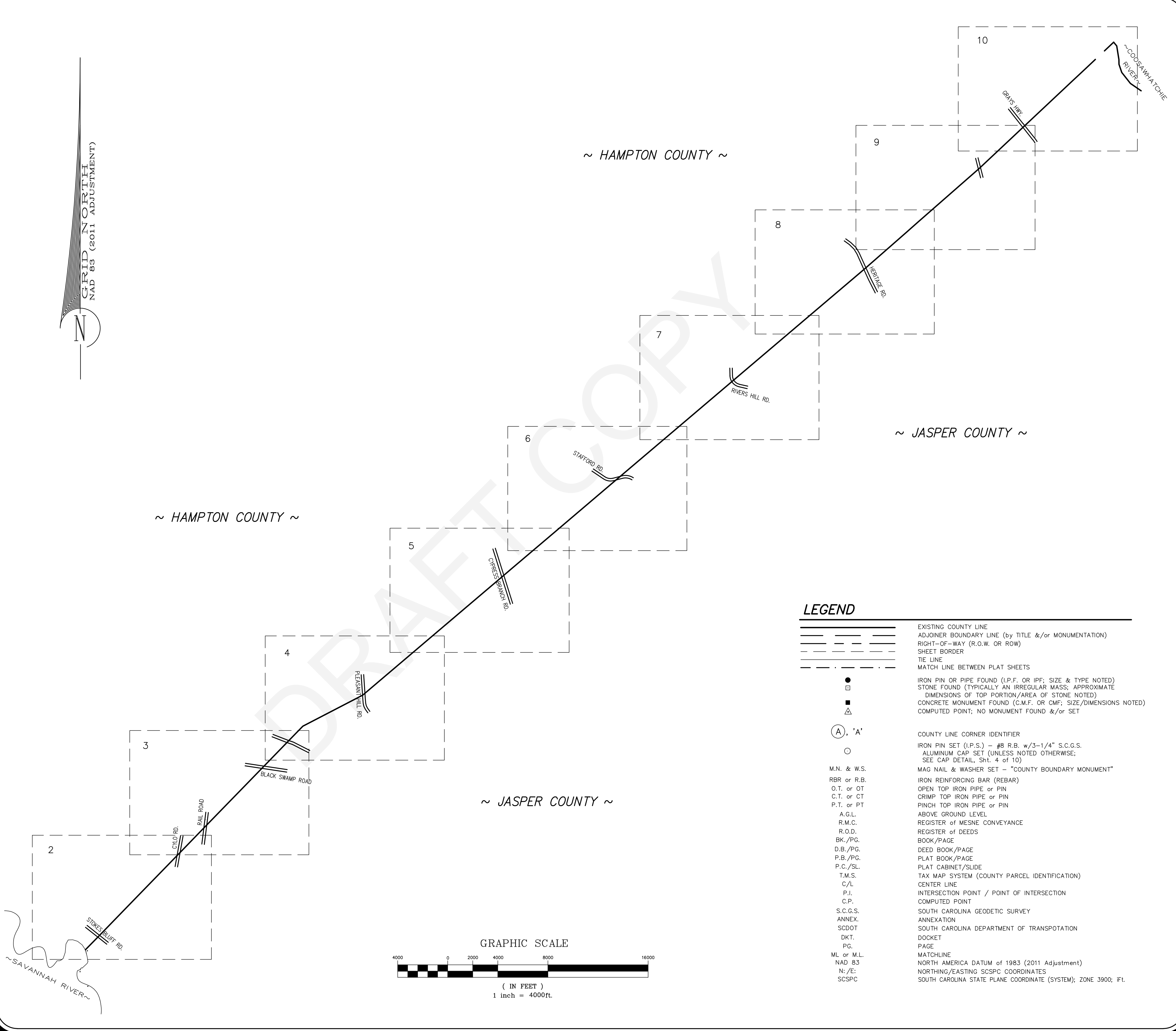
I HEREBY STATE THAT TO THE BEST OF MY PROFESSIONAL KNOWLEDGE, INFORMATION, AND BELIEF, THE SURVEY SHOWN HEREON WAS MADE IN ACCORDANCE WITH THE REQUIREMENTS OF THE 'STANDARDS OF PRACTICE MANUAL FOR SURVEYING IN SOUTH CAROLINA' (EFFECTIVE JUNE 26, 2009), AS PER ARTICLE 4, REGULATION 49-420 F., THAT THIS MAP OR PLAT IS INTENDED ONLY TO SHOW INFORMATION SURVEYED FOR A SPECIFIC STATED PURPOSE; THAT SURVEY LINES SHOWN HEREON ARE BASED ON ACTUAL FIELD SURVEY EVIDENCE AND/OR MEASUREMENTS WHICH MEET OR EXCEED THE REQUIREMENTS FOR A CLASS 'A' SURVEY AS SPECIFIED THEREIN.

DAVID BRANTON  
PROFESSIONAL ENGINEER  
No. 10107  
STATE OF SOUTH CAROLINA

NOT VALID UNLESS  
SIGNED IN RED INK

**REVIEW ONLY**

EMBOSSED SEAL



**LEGEND**

- |  |   |
|--|---|
|  | EXISTING COUNTY LINE  |
|  | ADJOINER BOUNDARY LINE (by TITLE &/or MONUMENTATION)  |
|  | RIGHT-OF-WAY (R.O.W. OR ROW)  |
|  | SHEET BORDER  |
|  | TIE LINE  |
|  | MATCH LINE BETWEEN PLAT SHEETS  |
|  | IRON PIN OR PIPE FOUND (I.P.F. OR I.P.P. SIZE & TYPE NOTED)   |
|  | STONE FOUND (TYPICALLY AN IRREGULAR MASS; APPROXIMATE DIMENSIONS OF TOP PORTION/AREA OF STONE NOTED)                      |
|  | CONCRETE MONUMENT FOUND (C.M.F. OR CMF; SIZE/DIMENSIONS NOTED)  |
|  | COMPUTED POINT; NO MONUMENT FOUND &/or SET  |
|  | COUNTY LINE CORNER IDENTIFIER   |
|  | IRON PIN SET (I.P.S.) - #8 R.B. w/3-1/4" S.C.G.S. ALUMINUM CAP SET (UNLESS NOTED OTHERWISE; SEE CAP DETAIL, Sht. 4 of 10) |
|  | MAG NAIL & WASHER SET - "COUNTY BOUNDARY MONUMENT"  |
|  | IRON REINFORCING BAR (REBAR)  |
|  | OPEN TOP IRON PIPE OR PIN   |
|  | CRIMP TOP IRON PIPE OR PIN  |
|  | PINCH TOP IRON PIPE OR PIN  |
|  | ABOVE GROUND LEVEL  |
|  | REGISTER OF MESNE CONVEYANCE  |
|  | REGISTER OF DEEDS   |
|  | BOOK/PAGE   |
|  | DEED BOOK/PAGE  |
|  | PLAT BOOK/PAGE  |
|  | PLAT CABINET/SLIDE  |
|  | TAX MAP SYSTEM (COUNTY PARCEL IDENTIFICATION)   |
|  | CENTER LINE   |
|  | INTERSECTION POINT / POINT OF INTERSECTION  |
|  | COMPUTED POINT  |
|  | SOUTH CAROLINA GEODETIC SURVEY  |
|  | ANNEXATION  |
|  | SOUTH CAROLINA DEPARTMENT OF TRANSPORTATION   |
|  | DOCKET  |
|  | PAGE  |
|  | MATCHLINE   |
|  | NORTH AMERICA DATUM OF 1983 (2011 Adjustment)   |
|  | NORTHING/EASTING SCSPC COORDINATES  |
|  | SOUTH CAROLINA STATE PLANE COORDINATE (SYSTEM); ZONE 3900; ftL.   |

This is not a valid, true copy of this document unless bearing the original signature, signature date, and the raised, embossed seal of the registered professional land surveyor or engineer.  
 Copyright 2023, CORNERSTONE SURVEYING & ENGINEERING, INC.  
 All rights reserved. Reproduction or use of this document, in whole or in part, without permission is prohibited.  
 Print No. \_\_\_\_\_  
 Date: \_\_\_\_/\_\_\_\_/\_\_\_\_

**CORNERSTONE**  
SURVEYING & ENGINEERING, INC.

1240 Bacons Bridge Rd. • Summerville • South Carolina • 29485 • Phone: 843-871-9706

A PLAT OF A PORTION OF THE HAMPTON-JASPER COUNTY LINE STARTING AT A POINT IN THE SAVANNAH RIVER ON THE GEORGIA-SOUTH CAROLINA STATE LINE, THEN RUNNING NORTHEASTERLY THROUGH 'COTTON HILL ROAD' (U.S. HWY. 321) TO A POINT NEAR THE INTERSECTION OF SEVERAL UNNAMED SOIL ROADS, TURNING SLIGHTLY EAST-NORTHEAST TO A POINT NEAR PLEASANT HILL ROAD (S-25-822/S-27-50), THEN NORTHEASTERLY TO A POINT NEAR BROWNING GATE ROAD/HERITAGE ROAD (S.C. HWY. 3), CONTINUING NORTHEASTERLY TO A POINT AT OLD TRAM ROAD (LOCAL/S-27-21), RESPECTIVELY, THEN RUNNING NORTHEASTERLY TO A POINT IN THE COOSAWATCHIE RIVER WHERE THE COUNTY LINE TURNS AND FOLLOWS THE COOSAWATCHIE RIVER SOUTH-SOUTHEAST TO THE TULIFINNY RIVER. THE SOUTHERN CORNER OF THE STATE OF SOUTH CAROLINA

Date of Map: 4/27/2023

Drawn: AWK  
 Design: AWK  
 Checked: RDB  
 Approved: RDB

CAD File: 20020 HAMPTON-JASPER.dwg  
 F.B. & Pg. \_\_\_\_\_  
 P.B. & Pg. \_\_\_\_\_  
 Pl.Board Appl.# \_\_\_\_\_

Date	Revision No.

Proj. No.: 20020  
 Sheet 1 Of 10

GRID IN ORTH  
NAD 83 (2011 ADJUSTMENT)

NOTE:  
FOR 'ADDITIONAL NOTES' SEE SHEET 1.

**COUNTY LINE MONUMENT SUMMARY TABLE NAD 83 (2011 Adj.)**

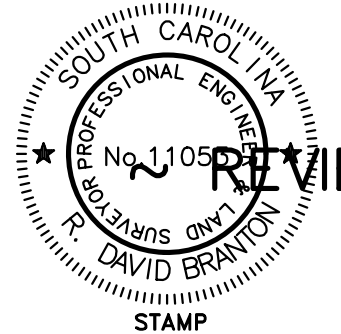
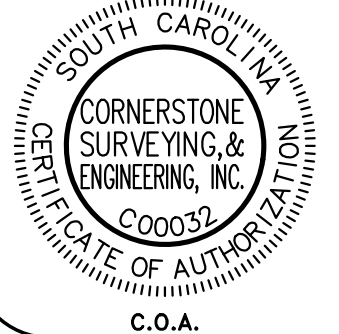
Monument	Northing (ft.)	Easting (ft.)	Description
'A-1'	262764.20	1914237.07	#8 RBR. W/ALUM. DISK
'A-2'	263588.05	1915037.83	#8 RBR. W/ALUM. DISK
'A-3'	266926.33	1918282.62	#8 RBR. W/ALUM. DISK
'A-4'	270407.74	1921666.53	#8 RBR. W/ALUM. DISK
'A-5'	272351.76	1923556.11	#8 RBR. W/ALUM. DISK
'A-6'	277061.11	1928133.57	#8 RBR. W/ALUM. DISK
'A-7'	279106.84	1930122.01	#8 RBR. W/ALUM. DISK
'B'	280419.73	1931398.13	#8 RBR. W/ALUM. DISK
'C'	282898.50	1936177.38	#8 RBR. W/ALUM. DISK
'C-1'	287453.41	1941540.59	#8 RBR. W/ALUM. DISK
'C-2'	292373.12	1947333.35	#8 RBR. W/ALUM. DISK
'C-2a'	292963.41	1948028.39	CONCRETE MONUMENT
'C-3'	295898.74	1951484.62	#8 RBR. W/ALUM. DISK
'C-4'	300148.48	1956488.52	#8 RBR. W/ALUM. DISK
'C-5'	304484.98	1961594.57	#8 RBR. W/ALUM. DISK
'C-6'	307950.50	1965675.07	#8 RBR. W/ALUM. DISK
'C-7'	313023.75	1971648.61	#8 RBR. W/ALUM. DISK
'D'	316889.68	1976200.58	#8 RBR. W/ALUM. DISK
'D-1'	318929.22	1978529.81	#8 RBR. W/ALUM. DISK
'D-2'	320649.81	1980494.79	#8 RBR. W/ALUM. DISK
'D-3'	324216.03	1984567.55	1" OPEN TOP
'E'	324910.87	1985361.07	#8 RBR. W/ALUM. DISK
'E-1'	328223.17	1988887.56	#8 RBR. W/ALUM. DISK
'E-2'	331917.16	1992820.41	#8 RBR. W/ALUM. DISK
'E-3'	332951.88	1993922.03	#8 RBR. W/ALUM. DISK

**LINE TABLE**

LINE	BEARING	DIST
L1	N44° 11' 11"E	±277

I HEREBY STATE THAT TO THE BEST OF MY PROFESSIONAL KNOWLEDGE, INFORMATION, AND BELIEF, THE SURVEY SHOWN HEREON WAS MADE IN ACCORDANCE WITH THE REQUIREMENTS OF THE 'STANDARDS OF PRACTICE MANUAL FOR SURVEYING IN SOUTH CAROLINA' (EFFECTIVE JUNE 26, 2009), AS PER ARTICLE 4, REGULATION 49-420 F., THAT THIS MAP OR PLAT IS INTENDED ONLY TO SHOW INFORMATION SURVEYED FOR A SPECIFIC STATED PURPOSE; THAT SURVEY LINES SHOWN HEREON ARE BASED ON ACTUAL FIELD SURVEY EVIDENCE AND/OR MEASUREMENTS WHICH MEET OR EXCEED THE REQUIREMENTS FOR A CLASS 'A' SURVEY AS SPECIFIED THEREIN.

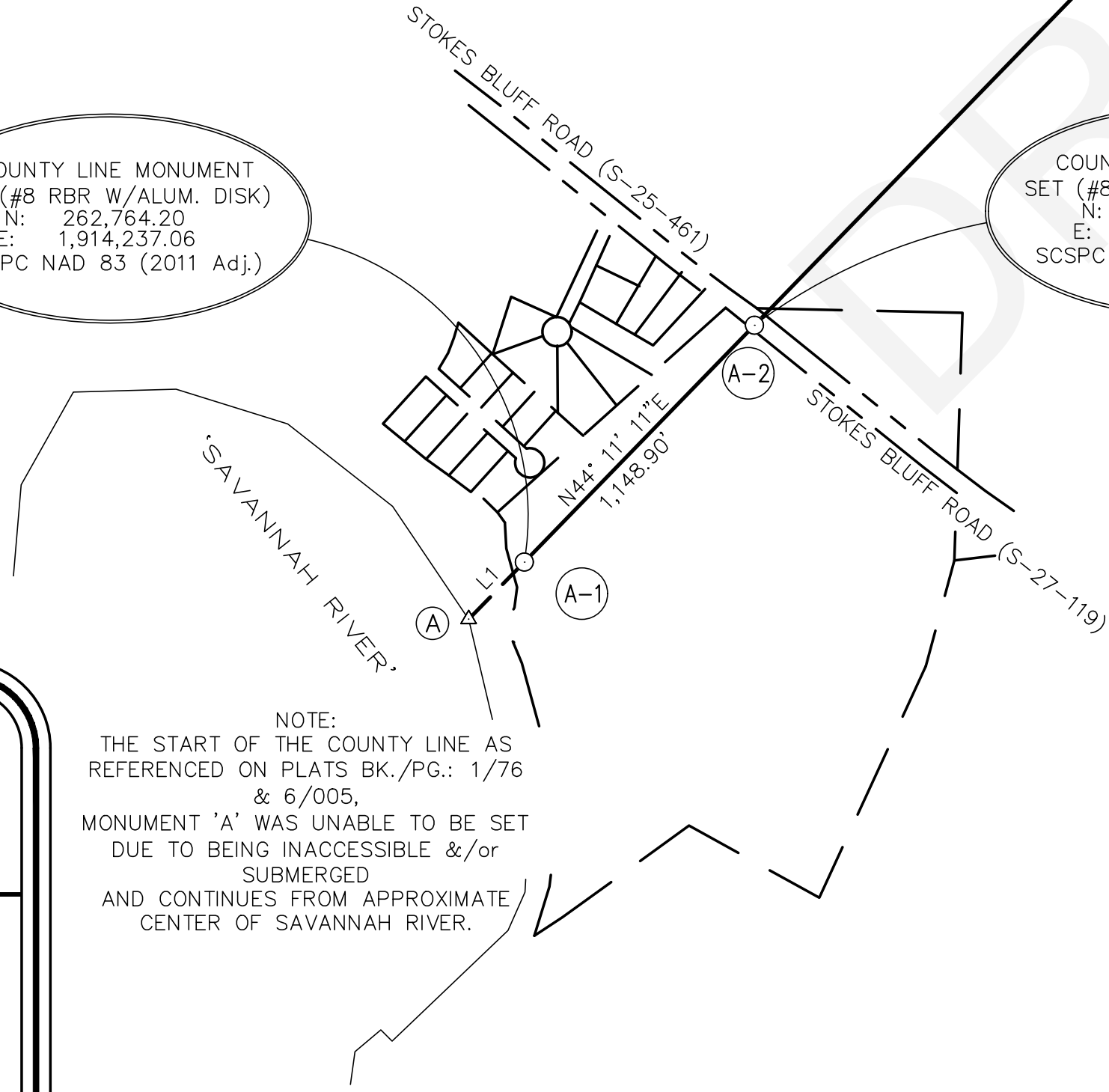
NOT VALID UNLESS  
SIGNED IN RED INK



REVIEW ONLY ~

EMBOSSED SEAL

NOTE:  
THE START OF THE COUNTY LINE AS REFERENCED ON PLATS BK./PG.: 1/76 & 6/005,  
MONUMENT 'A' WAS UNABLE TO BE SET DUE TO BEING INACCESSIBLE &/or SUBMERGED  
AND CONTINUES FROM APPROXIMATE CENTER OF SAVANNAH RIVER.

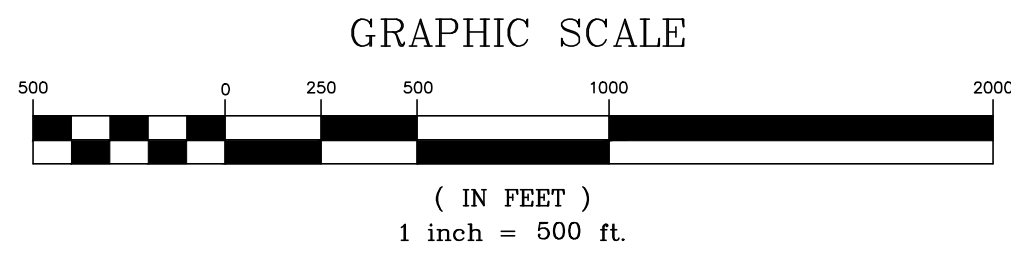


COUNTY LINE MONUMENT SET (#8 RBR W/ALUM. DISK)  
N: 266,926.33  
E: 1,918,282.62  
SCSPC NAD 83 (2011 Adj.)

COUNTY LINE MONUMENT SET (#8 RBR W/ALUM. DISK)  
N: 270,407.74  
E: 1,921,666.53  
SCSPC NAD 83 (2011 Adj.)

COUNTY LINE MONUMENT SET (#8 RBR W/ALUM. DISK)  
N: 263,588.05  
E: 1,915,037.83  
SCSPC NAD 83 (2011 Adj.)

COUNTY LINE MONUMENT SET (#8 RBR W/ALUM. DISK)  
N: 262,764.20  
E: 1,914,237.06  
SCSPC NAD 83 (2011 Adj.)



This is not a valid, true copy of the document unless bearing on the embossed seal of the surveyor or engineer.  
Copyright 2023, CORNERSTONE SURVEYING & ENGINEERING, INC.  
All rights reserved. Reproduction or use of this document, in whole or in part, without permission is prohibited.  
Print No. \_\_\_\_\_  
Date: \_\_\_\_/\_\_\_\_/\_\_\_\_

**CORNERSTONE SURVEYING & ENGINEERING, INC.**  
1240 Bacons Bridge Rd. • Summerville • South Carolina • 29485 • Phone: 843-871-9706

A PLAT OF A PORTION OF THE  
**HAMPTON-JASPER COUNTY LINE**  
STARTING AT A POINT IN THE  
'SAVANNAH RIVER' ON THE GEORGIA-SOUTH CAROLINA STATE LINE  
THEN RUNNING NORTHEASTERLY THROUGH 'COTTON HILL ROAD' (U.S. HWY. 321)  
TO A POINT NEAR THE INTERSECTION OF 'SEVERAL UNNAMED SOIL ROADS;  
TURNING SLIGHTLY EAST-NORTHEAST TO A POINT NEAR 'PLEASANT HILL ROAD' (S-25-882/S-27-50);  
THEN NORTHEASTERLY TO A POINT NEAR 'BROWNING GATE ROAD'/'HERITAGE ROAD' (S.C. HWY. 3);  
CONTINUING NORTHEASTERLY TO A POINT AT 'OLD TRAM ROAD' (LOCAL/S-27-211, RESPECTIVELY);  
THEN RUNNING NORTHEASTERLY TO A POINT IN THE 'COOSAWHATCHE RIVER' WHERE THE COUNTY  
LINE TURNS AND FOLLOWS THE 'COOSAWHATCHE RIVER' SOUTH-SOUTHEAST TO THE 'TULLIFINNY RIVER';  
HAMPTON COUNTY & JASPER COUNTY BEING LOCATED IN  
THE SOUTHERN CORNER OF THE STATE OF SOUTH CAROLINA

Date of Map:  
4/27/2023

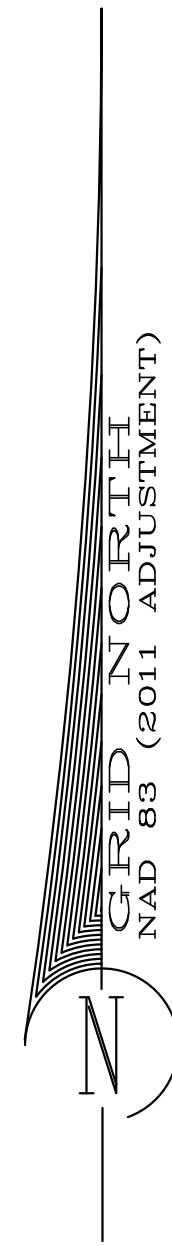
Drawn: AWK  
 Design: AWK  
 Checked: RDB  
 Approved: RDB

CAD File: 20020 HAMPTON-JASPER.dwg  
F.B. & Pg. \_\_\_\_\_  
P.B. & Pg. \_\_\_\_\_  
Pl. Board Appl.# \_\_\_\_\_

Date	Revision No.

Proj. No.: 20020  
Sheet 2 Of 10

NOTE:  
FOR 'ADDITIONAL NOTES' SEE SHEET 1.

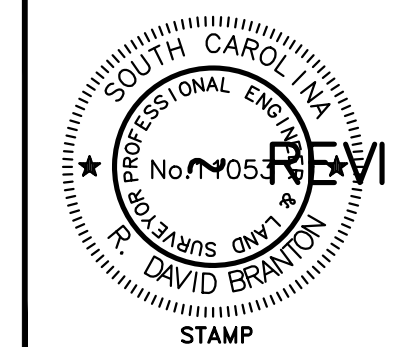


~ HAMPTON COUNTY ~

~ JASPER COUNTY ~

I HEREBY STATE THAT TO THE BEST OF MY PROFESSIONAL KNOWLEDGE, INFORMATION, AND BELIEF, THE SURVEY SHOWN HEREON WAS MADE IN ACCORDANCE WITH THE REQUIREMENTS OF THE 'STANDARDS OF PRACTICE MANUAL FOR SURVEYING IN SOUTH CAROLINA' (EFFECTIVE JUNE 26, 2009), AS PER ARTICLE 4, REGULATION 49-420 F., THAT THIS MAP OR PLAT IS INTENDED ONLY TO SHOW INFORMATION SURVEYED FOR A SPECIFIC STATED PURPOSE; THAT SURVEY LINES SHOWN HEREON ARE BASED ON ACTUAL FIELD SURVEY EVIDENCE AND/OR MEASUREMENTS WHICH MEET OR EXCEED THE REQUIREMENTS FOR A CLASS 'A' SURVEY AS SPECIFIED THEREIN.

NOT VALID UNLESS  
SIGNED IN RED INK



REVIEW ONLY ~

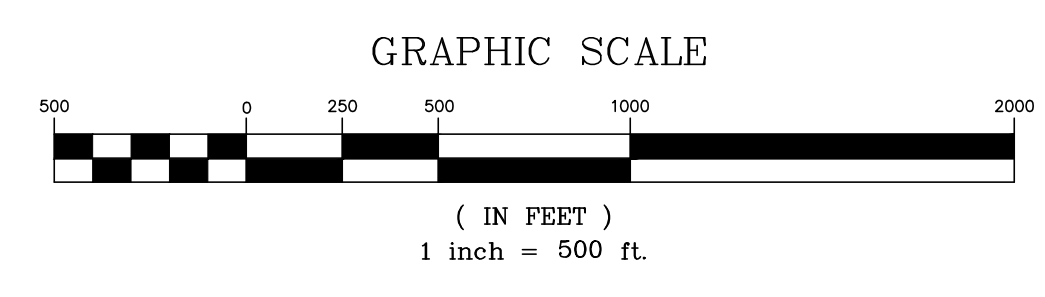
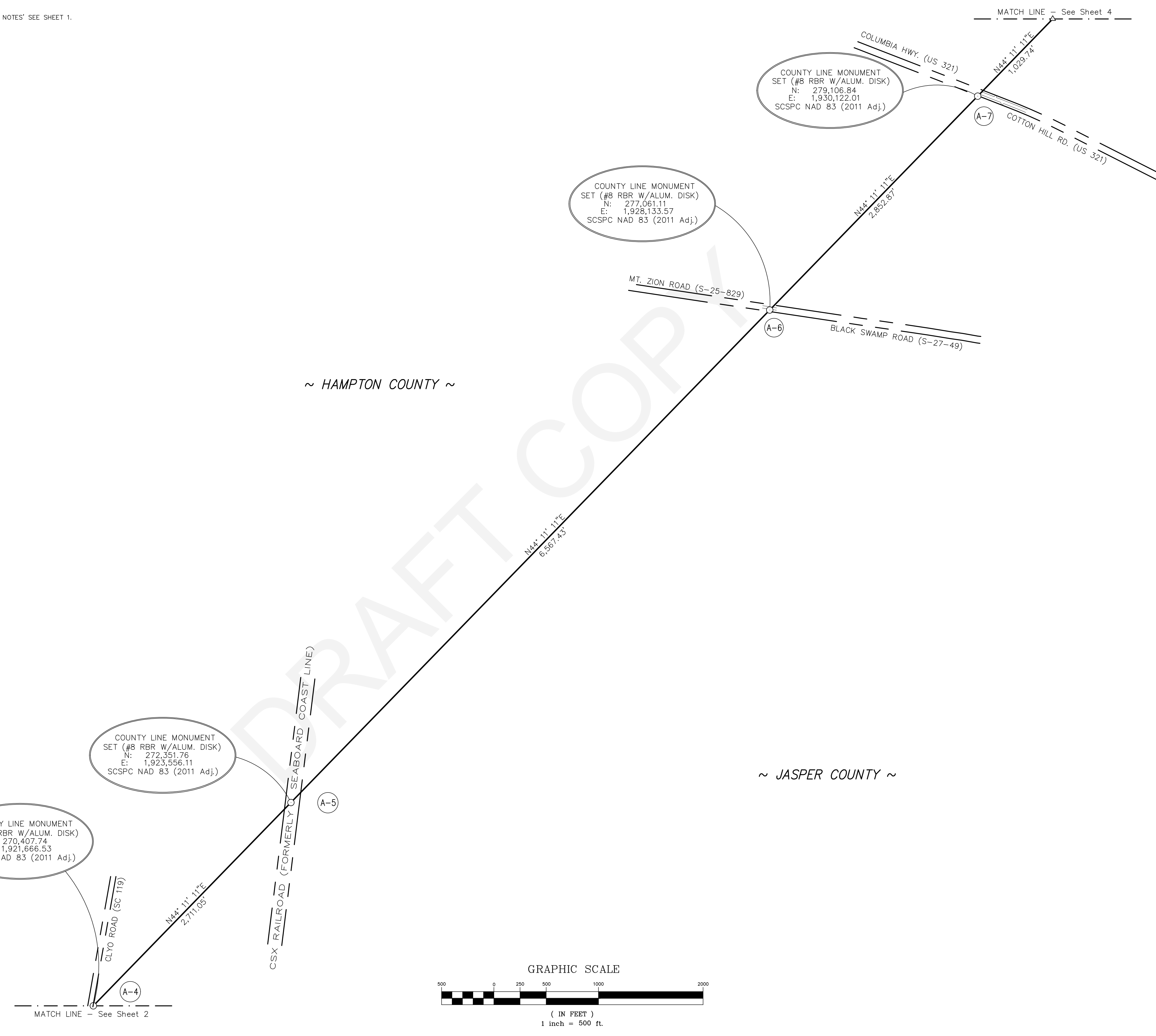
EMBOSSED SEAL

COUNTY LINE MONUMENT  
SET (#8 RBR W/ALUM. DISK)  
N: 272,351.76  
E: 1,923,556.11  
SCSPC NAD 83 (2011 Adj.)

COUNTY LINE MONUMENT  
SET (#8 RBR W/ALUM. DISK)  
N: 270,407.74  
E: 1,921,666.53  
SCSPC NAD 83 (2011 Adj.)

COUNTY LINE MONUMENT  
SET (#8 RBR W/ALUM. DISK)  
N: 277,061.11  
E: 1,928,133.57  
SCSPC NAD 83 (2011 Adj.)

COUNTY LINE MONUMENT  
SET (#8 RBR W/ALUM. DISK)  
N: 279,106.84  
E: 1,930,122.01  
SCSPC NAD 83 (2011 Adj.)



This is not a valid, true copy of this document unless bearing an embossed seal of the surveyor or engineer.  
Copyright 2023, CORNERSTONE SURVEYING & ENGINEERING, INC. All rights reserved. Reproduction or use of this document, in whole or in part, without permission is prohibited.  
Print No. \_\_\_\_\_  
Date: \_\_\_\_/\_\_\_\_/\_\_\_\_

**CORNERSTONE**  
SURVEYING & ENGINEERING, INC.  
1240 Bacons Bridge Rd. • Summerville • South Carolina • 29485 • Phone: 843-871-9706

A PLAT OF A PORTION OF THE  
**HAMPTON-JASPER COUNTY LINE**  
STARTING AT A POINT IN THE  
'SAVANNAH RIVER' ON THE GEORGIA-SOUTH CAROLINA STATE LINE,  
THEN RUNNING NORTHEASTERLY THROUGH 'COTTON HILL ROAD' (U.S. HWY. 321)  
TO A POINT NEAR THE INTERSECTION OF SEVERAL UNNAMED SOIL ROADS,  
TURNING SLIGHTLY EAST-NORTHEAST TO A POINT NEAR PLEASANT HILL ROAD (S-25-882/S-27-50),  
CONTINUING NORTHEASTERLY TO A POINT AT 'OLD TRAM ROAD' (LOCAL S-27-21), RESPECTIVELY,  
THEN RUNNING NORTHEASTERLY TO A POINT IN THE COOSAWATCHIE RIVER WHERE THE COUNTY LINE TURNS AND FOLLOWS THE COOSAWATCHIE RIVER SOUTH-SOUTHEAST TO THE TULLFINNY RIVER.  
THE SOUTHERN CORNER OF THE STATE OF SOUTH CAROLINA

Date of Map:  
4/27/2023  
 Drawn: AWK  
 Design: AWK  
 Checked: RDB  
 Approved: RDB  
 CAD File: 20020 HAMPTON-JASPER.dwg  
 F.B. & Pg. \_\_\_\_\_  
 P.B. & Pg. \_\_\_\_\_  
 Pl. Board Appl. # \_\_\_\_\_

Date	Revision No.

Proj. No.: 20020  
Sheet 3 Of 10

GRID IN ORTH  
NAD 83 (2011 ADJUSTMENT)

NOTE:  
FOR 'ADDITIONAL NOTES' SEE SHEET 1.

MATCH LINE - See Sheet 5

OLD CEMETERY  
TMS #016-00-02-044 (JASPER)

COUNTY LINE MONUMENT  
SET (#8 RBR W/ALUM. DISK)  
N: 287,453.41  
E: 1,941,340.59  
SCSPC NAD 83 (2011 Adj.)

COUNTY LINE MONUMENT  
SET (#8 RBR W/ALUM. DISK)  
N: 282,898.50  
E: 1,936,177.38  
SCSPC NAD 83 (2011 Adj.)

COUNTY LINE MONUMENT  
SET (#8 RBR W/ALUM. DISK)  
FOUND (DESTROYED CONCRETE MONUMENT)  
N: 280,419.73  
E: 1,931,398.13  
SCSPC NAD 83 (2011 Adj.)

MATCH LINE - See Sheet 3

~ HAMPTON COUNTY ~

~ HAMPTON COUNTY ~

~ JASPER COUNTY ~

I HEREBY STATE THAT TO THE BEST OF MY PROFESSIONAL KNOWLEDGE, INFORMATION, AND BELIEF, THE SURVEY SHOWN HEREON WAS MADE IN ACCORDANCE WITH THE REQUIREMENTS OF THE 'STANDARDS OF PRACTICE MANUAL FOR SURVEYING IN SOUTH CAROLINA' (EFFECTIVE JUNE 26, 2009), AS PER ARTICLE 4, REGULATION 49-420 F., THAT THIS MAP OR PLAT IS INTENDED ONLY TO SHOW INFORMATION SURVEYED FOR A SPECIFIC STATED PURPOSE; THAT SURVEY LINES SHOWN HEREON ARE BASED ON ACTUAL FIELD SURVEY EVIDENCE AND/OR MEASUREMENTS WHICH MEET OR EXCEED THE REQUIREMENTS FOR A CLASS 'A' SURVEY AS SPECIFIED THEREIN.

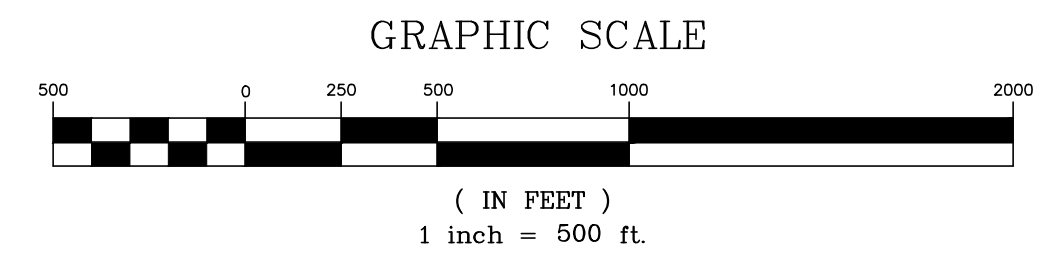
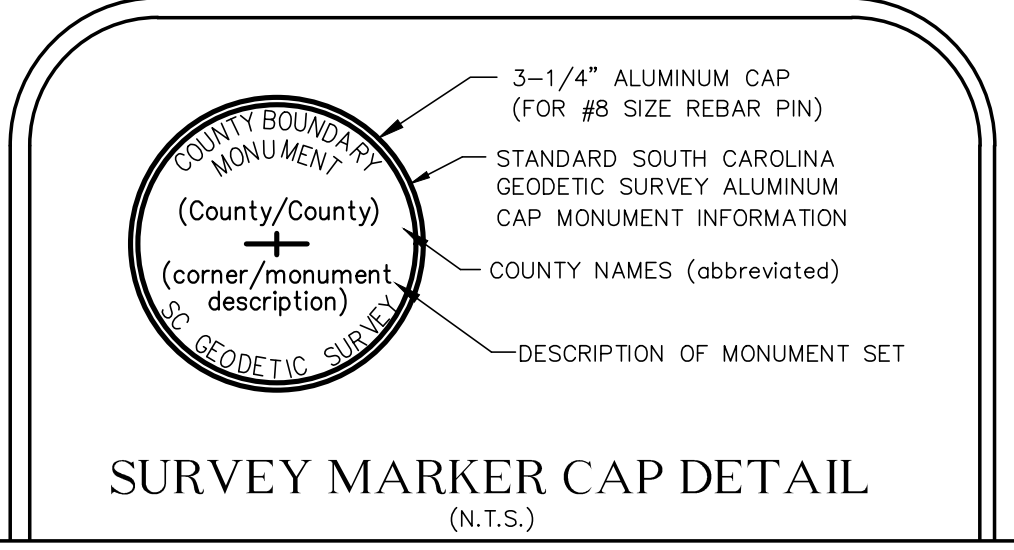
NOT VALID UNLESS SIGNED IN RED INK

**REVIEW ONLY ~**

CORNERSTONE SURVEYING & ENGINEERING, INC.  
C.O.A.

DAVID BRANTZ  
STAMP

EMBOSSED SEAL



This is not a valid, true copy of this document unless bearing on the embossed seal of the surveyor or engineer.  
Copyright 2023, CORNERSTONE SURVEYING & ENGINEERING, INC. All rights reserved. Reproduction or use of this document, in whole or in part, without permission is prohibited.  
Print No. / / /  
Date: / /

**CORNERSTONE**  
SURVEYING & ENGINEERING, INC.  
1240 Bacons Bridge Rd. • Summerville • South Carolina • 29485 • Phone: 843-871-9706

A PLAT OF A PORTION OF THE  
**HAMPTON-JASPER COUNTY LINE**  
STARTING AT A POINT IN THE  
'SAVANNAH RIVER' ON THE GEORGIA-SOUTH CAROLINA STATE LINE,  
THEN RUNNING NORTHEASTERLY THROUGH 'COTTON HILL ROAD' (U.S. HWY. 321)  
TO A POINT NEAR THE INTERSECTION OF SEVERAL UNNAMED SOIL ROADS,  
TURNING SLIGHTLY EAST-NORTHEAST TO A POINT NEAR PLEASANT HILL ROAD (S-25-822/S-27-50),  
THEN NORTHEASTERLY TO A POINT NEAR BROWNING GATE ROAD/HERITAGE ROAD (S.C. HWY. 3),  
CONTINUING NORTHEASTERLY TO A POINT AT 'OLD TRAM ROAD' (LOCAL S-27-271), RESPECTIVELY,  
THEN RUNNING NORTHEASTERLY TO A POINT IN THE COOSAWATCHIE RIVER WHERE THE COUNTY LINE  
TURNS AND FOLLOWS THE COOSAWATCHIE RIVER SOUTH-SOUTHEAST TO THE TULLIFINNY RIVER.  
THE SOUTHERN CORNER OF THE STATE OF SOUTH CAROLINA

Date of Map:  
4/27/2023

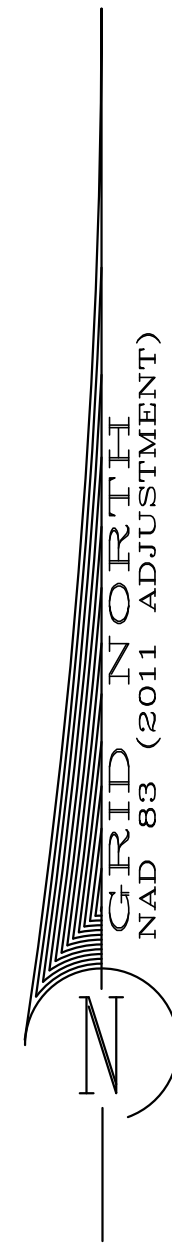
Drawn: AWK  
Design: AWK  
Checked: RDB  
Approved: RDB

CAD File: 20020 HAMPTON-JASPER.dwg  
F.B. & Pg. \_\_\_\_\_  
P.B. & Pg. \_\_\_\_\_  
Pl. Board Appl. # \_\_\_\_\_

Date	Revision No.

Proj. No.: 20020  
Sheet 4 of 10

NOTE:  
FOR 'ADDITIONAL NOTES' SEE SHEET 1.



~ HAMPTON COUNTY ~

~ JASPER COUNTY ~

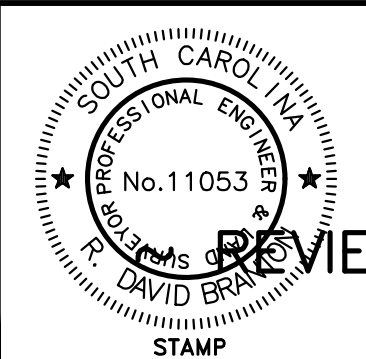
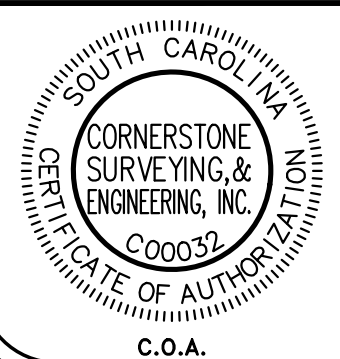
COUNTY LINE MONUMENT  
SET (#8 RBR W/ALUM. DISK)  
N: 287,453.41  
E: 1,941,540.59  
SCSPC NAD 83 (2011 Adj.)

COUNTY LINE MONUMENT  
SET (#8 RBR W/ALUM. DISK)  
N: 292,373.12  
E: 1,947,333.35  
SCSPC NAD 83 (2011 Adj.)

COUNTY LINE MONUMENT  
FOUND (3"X3" CONCRETE MONUMENT)  
SUBMERGED UNDER WATER  
N: 292,963.41  
E: 1,948,028.39  
SCSPC NAD 83 (2011 Adj.)

COUNTY LINE MONUMENT  
SET (#8 RBR W/ALUM. DISK)  
N: 295,898.74  
E: 1,951,484.62  
SCSPC NAD 83 (2011 Adj.)

I HEREBY STATE THAT TO THE BEST OF MY PROFESSIONAL KNOWLEDGE, INFORMATION, AND BELIEF, THE SURVEY SHOWN HEREON WAS MADE IN ACCORDANCE WITH THE REQUIREMENTS OF THE 'STANDARDS OF PRACTICE MANUAL FOR SURVEYING IN SOUTH CAROLINA' (EFFECTIVE JUNE 26, 2009), AS PER ARTICLE 4, REGULATION 49-420 F., THAT THIS MAP OR PLAT IS INTENDED ONLY TO SHOW INFORMATION SURVEYED FOR A SPECIFIC STATED PURPOSE; THAT SURVEY LINES SHOWN HEREON ARE BASED ON ACTUAL FIELD SURVEY EVIDENCE AND/OR MEASUREMENTS WHICH MEET OR EXCEED THE REQUIREMENTS FOR A CLASS 'A' SURVEY AS SPECIFIED THEREIN.



NOT VALID UNLESS  
SIGNED IN RED INK

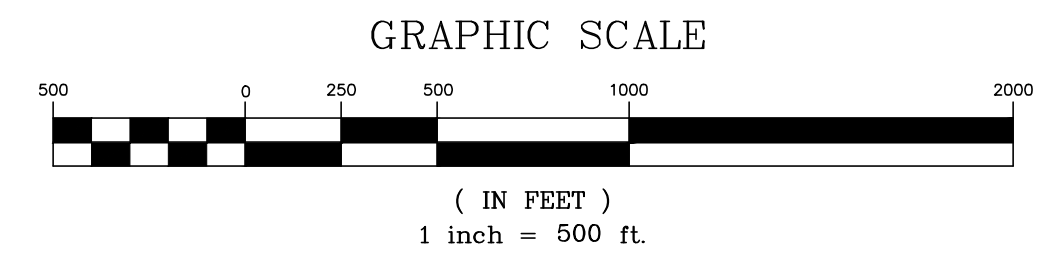
**REVIEW ONLY ~**

EMBOSSSED SEAL

MATCH LINE - See Sheet 4

MATCH LINE - See Sheet 6

DRAFT COPY



This is not a valid, true copy of this document unless bearing an embossed seal of the surveyor or engineer.

Copyright 2023, CORNERSTONE SURVEYING & ENGINEERING, INC. All rights reserved. Reproduction or use of this document, in whole or in part, without permission is prohibited.

Print No. \_\_\_\_\_  
Date: \_\_\_\_/\_\_\_\_/\_\_\_\_

**CORNERSTONE**  
SURVEYING & ENGINEERING, INC.

1240 Bacons Bridge Rd. • Summerville • South Carolina • 29485 • Phone: 843-871-9706

A PLAT OF A PORTION OF THE  
**HAMPTON-JASPER COUNTY LINE**  
STARTING AT A POINT IN THE  
'SAVANNAH RIVER' ON THE GEORGIA-SOUTH CAROLINA STATE LINE,  
THEN RUNNING NORTHEASTERLY THROUGH 'COTTON HILL ROAD' (U.S. HWY. 321)  
TO A POINT NEAR THE INTERSECTION OF SEVERAL UNNAMED SOIL ROADS,  
TURNING SLIGHTLY EAST-NORTHEAST TO A POINT NEAR 'PLEASANT HILL ROAD' (S-25-862/S-27-50),  
THEN NORTHEASTERLY TO A POINT NEAR 'BROWNING GATE ROAD'/'HERITAGE ROAD' (S.C. HWY. 3),  
CONTINUING NORTHEASTERLY TO A POINT AT 'OLD TRAM ROAD'/'LOCAL/S-27-21', RESPECTIVELY,  
THEN RUNNING NORTHEASTERLY TO A POINT IN THE 'COOSAWATCHIE RIVER' WHERE THE COUNTY  
LINE TURNS AND FOLLOWS THE 'COOSAWATCHIE RIVER' SOUTH-SOUTHEAST TO THE 'TULIFINNY RIVER'.  
HAMPTON COUNTY & JASPER COUNTY BEING LOCATED IN  
THE SOUTHERN CORNER OF THE STATE OF SOUTH CAROLINA

Date of Map:  
4/27/2023

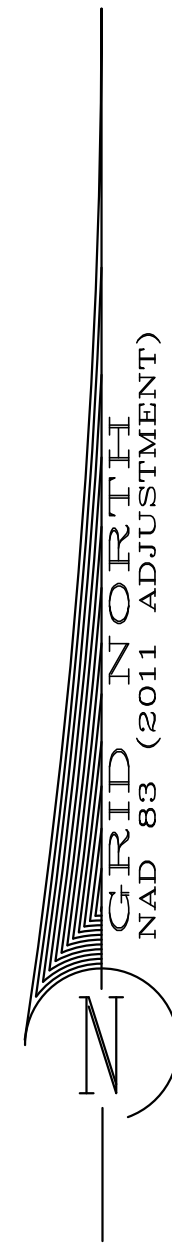
Drawn: AWK  
Design: AWK  
Checked: RDB  
Approved: RDB

CAD File: 20020 HAMPTON-JASPER.dwg  
F.B. & Pg. \_\_\_\_\_  
P.B. & Pg. \_\_\_\_\_  
Pl. Board Appl. # \_\_\_\_\_

Date	Revision No.

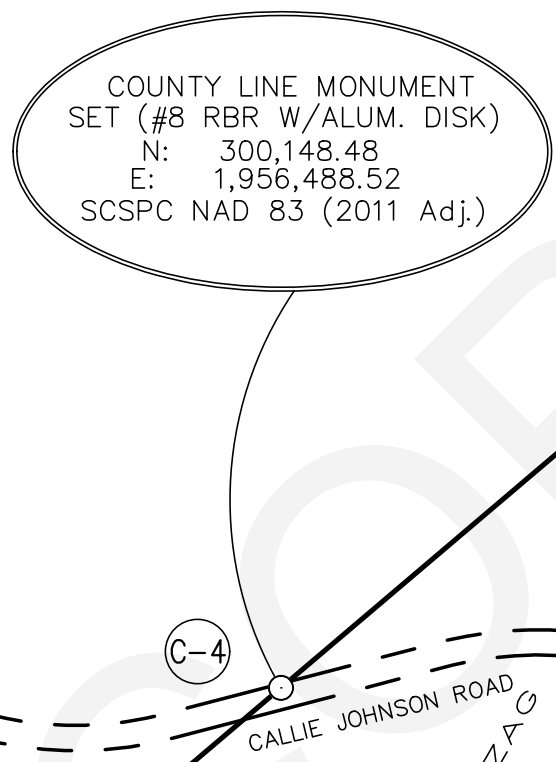
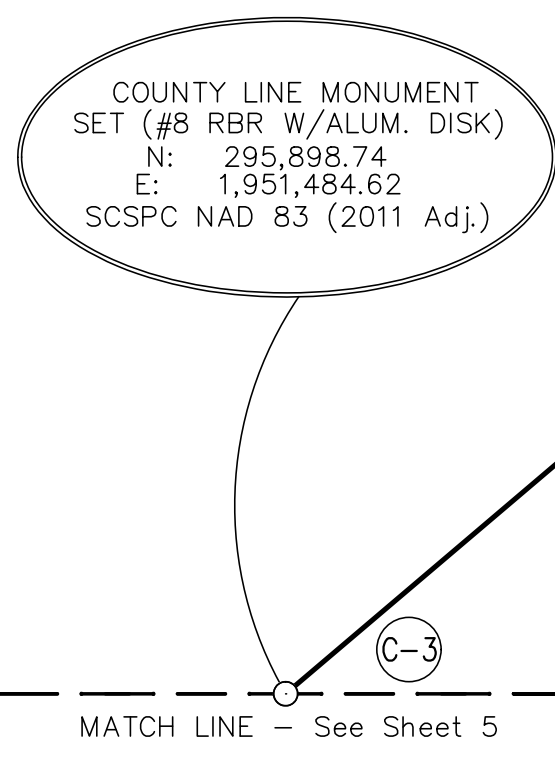
Proj. No.: 20020  
Sheet 5 Of 10

NOTE:  
FOR 'ADDITIONAL NOTES' SEE SHEET 1.

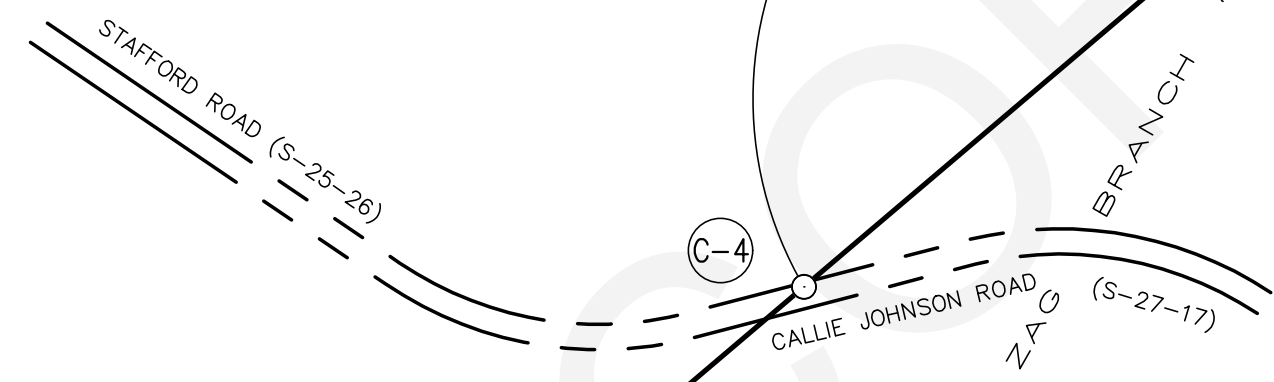


~ HAMPTON COUNTY ~

~ JASPER COUNTY ~



MATCH LINE - See Sheet 7

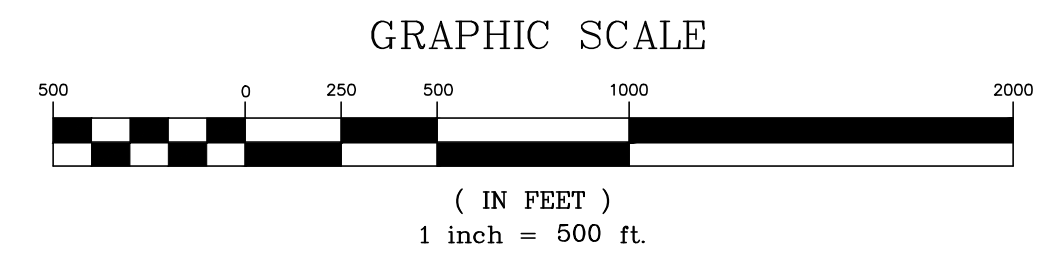


N49° 39' 33"E  
6,565.01'

N49° 39' 33"E  
5,893.10'

I HEREBY STATE THAT TO THE BEST OF MY PROFESSIONAL KNOWLEDGE, INFORMATION, AND BELIEF, THE SURVEY SHOWN HEREON WAS MADE IN ACCORDANCE WITH THE REQUIREMENTS OF THE 'STANDARDS OF PRACTICE MANUAL FOR SURVEYING IN SOUTH CAROLINA' (EFFECTIVE JUNE 26, 2009), AS PER ARTICLE 4, REGULATION 49-420 F., THAT THIS MAP OR PLAT IS INTENDED ONLY TO SHOW INFORMATION SURVEYED FOR A SPECIFIC STATED PURPOSE; THAT SURVEY LINES SHOWN HEREON ARE BASED ON ACTUAL FIELD SURVEY EVIDENCE AND/OR MEASUREMENTS WHICH MEET OR EXCEED THE REQUIREMENTS FOR A CLASS 'A' SURVEY AS SPECIFIED THEREIN.

	<p>NOT VALID UNLESS SIGNED IN RED INK</p>	<p>REVIEW ONLY ~</p>
<p>C.O.A.</p>	<p>STAMP</p>	<p>EMBOSSSED SEAL</p>



This is not a valid, true copy of this document unless bearing on the embossed seal of the surveyor or engineer.  
© Copyright 2023, CORNERSTONE SURVEYING & ENGINEERING, INC. All rights reserved. Reproduction or use of this document, in whole or in part, without written permission is prohibited.  
Print No. \_\_\_\_\_  
Date: \_\_\_\_/\_\_\_\_/\_\_\_\_

**CORNERSTONE**  
SURVEYING & ENGINEERING, INC.  
1240 Bacons Bridge Rd. • Summerville • South Carolina • 29485 • Phone: 843-871-9706

A PLAT OF A PORTION OF THE  
**HAMPTON - JASPER COUNTY LINE**  
STARTING AT A POINT IN THE  
"SAVANNAH RIVER" ON THE GEORGIA-SOUTH CAROLINA STATE LINE,  
THEN RUNNING NORTHEASTERLY THROUGH 'COTTON HILL ROAD' (U.S. HWY. 321)  
TO A POINT NEAR THE INTERSECTION OF SEVERAL UNNAMED SOIL ROADS,  
TURNING SLIGHTLY EAST-NORTHEAST TO A POINT NEAR PLEASANT HILL ROAD (S-25-862/S-27-50),  
THEN NORTHEASTERLY TO A POINT NEAR BROWNING GATE ROAD/HERITAGE ROAD (S.C. HWY. 3),  
CONTINUING NORTHEASTERLY TO A POINT AT 'OLD TRAM ROAD' (LOCAL/S-27-21), RESPECTIVELY,  
THEN RUNNING NORTHEASTERLY TO A POINT IN THE COOSAWHATCHIE RIVER WHERE THE COUNTY LINE  
LINE TURNS AND FOLLOWS THE COOSAWHATCHIE RIVER SOUTH-SOUTHEAST TO THE TULLIPNY RIVER.  
THE SOUTHERN CORNER OF THE STATE OF SOUTH CAROLINA

Date of Map:  
4/27/2023

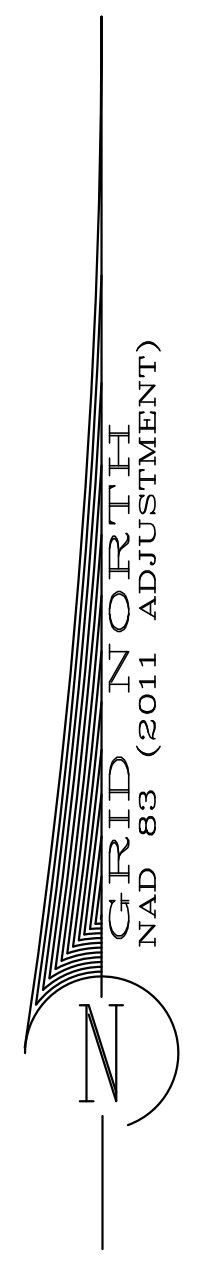
Drawn: AWK  
 Design: AWK  
 Checked: RDB  
 Approved: RDB

CAD File: 20020 HAMPTON-JASPER.dwg  
F.B. & Pg. \_\_\_\_\_  
P.B. & Pg. \_\_\_\_\_  
Pl.Board Appl.# \_\_\_\_\_

Date	Revision No.

Proj. No.: 20020  
Sheet 6 Of 10

NOTE:  
FOR 'ADDITIONAL NOTES' SEE SHEET 1.



~ HAMPTON COUNTY ~

~ JASPER COUNTY ~

COUNTY LINE MONUMENT SET (#8 RBR W/ALUM. DISK)  
N: 304,484.98  
E: 1,961,594.57  
SCSPC NAD 83 (2011 Adj.)

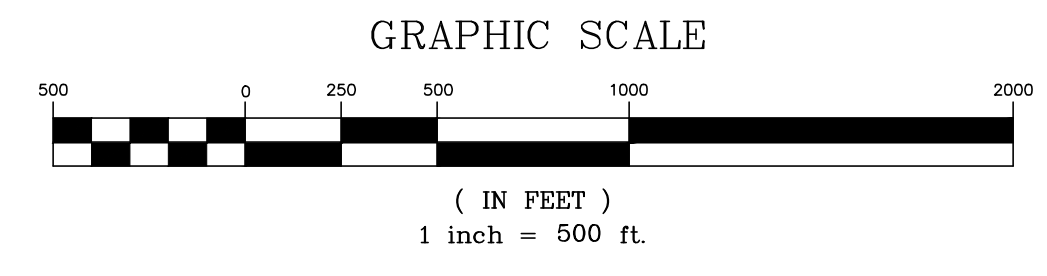
COUNTY LINE MONUMENT SET (#8 RBR W/ALUM. DISK)  
N: 307,950.50  
E: 1,965,675.07  
SCSPC NAD 83 (2011 Adj.)

MATCH LINE - See Sheet 6

MATCH LINE - See Sheet 8

I HEREBY STATE THAT TO THE BEST OF MY PROFESSIONAL KNOWLEDGE, INFORMATION, AND BELIEF, THE SURVEY SHOWN HEREON WAS MADE IN ACCORDANCE WITH THE REQUIREMENTS OF THE 'STANDARDS OF PRACTICE MANUAL FOR SURVEYING IN SOUTH CAROLINA' (EFFECTIVE JUNE 26, 2009), AS PER ARTICLE 4, REGULATION 49-420 F., THAT THIS MAP OR PLAT IS INTENDED ONLY TO SHOW INFORMATION SURVEYED FOR A SPECIFIC STATED PURPOSE; THAT SURVEY LINES SHOWN HEREON ARE BASED ON ACTUAL FIELD SURVEY EVIDENCE AND/OR MEASUREMENTS WHICH MEET OR EXCEED THE REQUIREMENTS FOR A CLASS 'A' SURVEY AS SPECIFIED THEREIN.

		<p>NOT VALID UNLESS SIGNED IN RED INK</p> <p><b>REVIEW ONLY ~</b></p> <p>DAVID BRANTLEY</p> <p>STAMP</p> <p>EMBOSSSED SEAL</p>
--	--	--



This is not a valid, true copy of this document unless bearing an embossed seal of the surveyor or engineer.  
Copyright 2023, CORNERSTONE SURVEYING & ENGINEERING, INC. All rights reserved. Reproduction or use of this document, in whole or in part, without written permission is prohibited.  
Print No. \_\_\_\_\_  
Date: \_\_\_\_/\_\_\_\_/\_\_\_\_

**CORNERSTONE**  
SURVEYING & ENGINEERING, INC.  
1240 Bacons Bridge Rd. • Summerville • South Carolina • 29485 • Phone: 843-871-9706

A PLAT OF A PORTION OF THE  
**HAMPTON-JASPER COUNTY LINE**  
STARTING AT A POINT IN THE  
'SAVANNAH RIVER' ON THE GEORGIA-SOUTH CAROLINA STATE LINE,  
TO A POINT NEAR THE INTERSECTION OF SEVERAL UNNAMED SOIL ROADS,  
TURNING SLIGHTLY EAST-NORTHEAST TO A POINT NEAR 'PLEASANT HILL ROAD' (S-25-882/S-27-50),  
THEN NORTH-EASTERLY TO A POINT NEAR 'BROWNING GATE ROAD/HERITAGE ROAD' (S-25-882/S-27-50),  
CONTINUING NORTH-EASTERLY TO A POINT AT 'OLD FRAM ROAD' (LOCAL/S-25-21), RESPECTIVELY,  
THEN RUNNING NORTH-EASTERLY TO A POINT IN THE 'COGSWATCHE RIVER' WHERE THE COUNTY LINE TURNS AND FOLLOWS THE 'COGSWATCHE RIVER' SOUTH-SOUTHEAST TO THE 'TULPINN RIVER'.  
THE SOUTHERN CORNER OF THE STATE OF SOUTH CAROLINA

Date of Map: 4/27/2023

Drawn: AWK  
Design: AWK  
Checked: RDB  
Approved: RDB

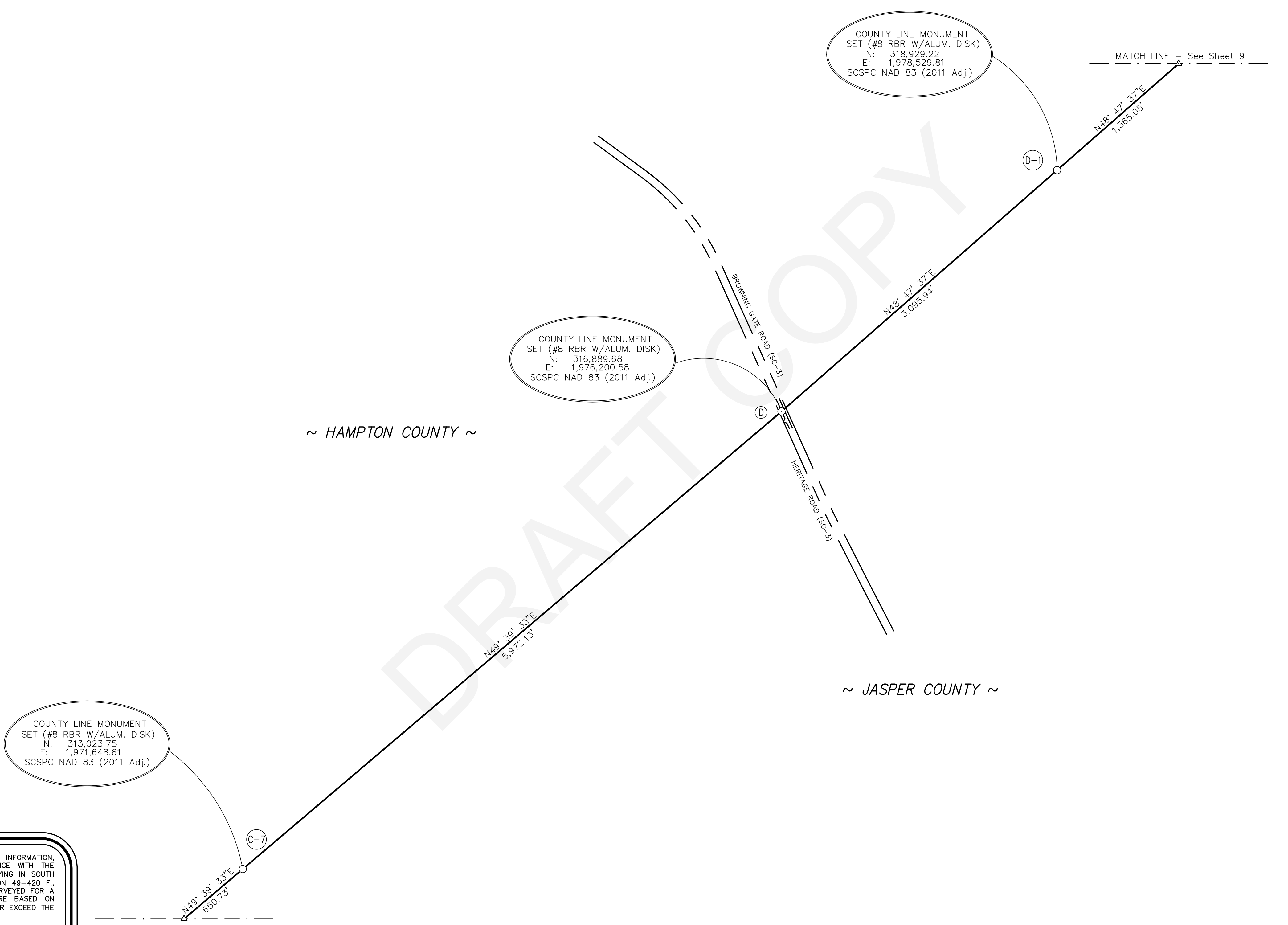
CAD File: 20020 HAMPTON-JASPER.dwg  
F.B. & Pg. \_\_\_\_\_  
P.B. & Pg. \_\_\_\_\_  
Pl. Board Appl. # \_\_\_\_\_

Date	Revision No.

Proj. No.: 20020  
Sheet 7 of 10

GRID IN ORTH  
NAD 83 (2011 ADJUSTMENT)

NOTE:  
FOR 'ADDITIONAL NOTES' SEE SHEET 1.



COUNTY LINE MONUMENT  
SET (#8 RBR W/ALUM. DISK)  
N: 313,023.75  
E: 1,971,648.81  
SCSPC NAD 83 (2011 Adj.)

COUNTY LINE MONUMENT  
SET (#8 RBR W/ALUM. DISK)  
N: 316,869.68  
E: 1,976,200.58  
SCSPC NAD 83 (2011 Adj.)

COUNTY LINE MONUMENT  
SET (#8 RBR W/ALUM. DISK)  
N: 318,929.22  
E: 1,978,529.81  
SCSPC NAD 83 (2011 Adj.)

I HEREBY STATE THAT TO THE BEST OF MY PROFESSIONAL KNOWLEDGE, INFORMATION, AND BELIEF, THE SURVEY SHOWN HEREON WAS MADE IN ACCORDANCE WITH THE REQUIREMENTS OF THE 'STANDARDS OF PRACTICE MANUAL FOR SURVEYING IN SOUTH CAROLINA' (EFFECTIVE JUNE 26, 2009), AS PER ARTICLE 4, REGULATION 49-420 F., THAT THIS MAP OR PLAT IS INTENDED ONLY TO SHOW INFORMATION SURVEYED FOR A SPECIFIC STATED PURPOSE; THAT SURVEY LINES SHOWN HEREON ARE BASED ON ACTUAL FIELD SURVEY EVIDENCE AND/OR MEASUREMENTS WHICH MEET OR EXCEED THE REQUIREMENTS FOR A CLASS 'A' SURVEY AS SPECIFIED THEREIN.

NOT VALID UNLESS SIGNED IN RED INK

**REVIEW ONLY ~**

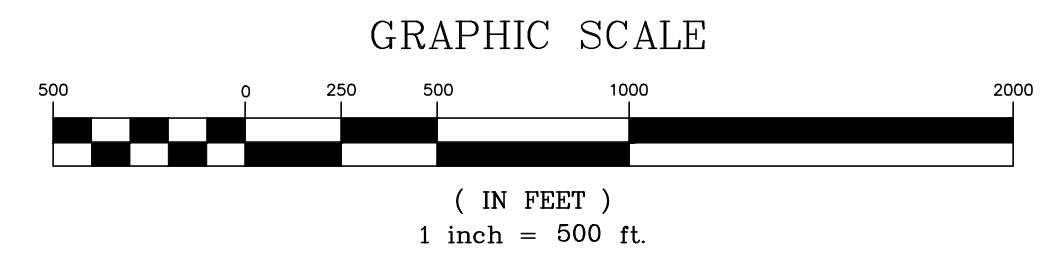
CORNERSTONE SURVEYING & ENGINEERING, INC.  
C.O.A.

DAVID BRANTZ  
STAMP

EMBOSSED SEAL

MATCH LINE - See Sheet 7

MATCH LINE - See Sheet 9



~ HAMPTON COUNTY ~

~ JASPER COUNTY ~

This is not a valid, true copy of this document unless bearing an embossed seal of the surveyor or engineer.  
Copyright 2023, CORNERSTONE SURVEYING & ENGINEERING, INC. All rights reserved. Reproduction or use of this document, in whole or in part, without permission is prohibited.  
Print No. / /  
Date / /

**CORNERSTONE**  
SURVEYING & ENGINEERING, INC.  
1240 Bacons Bridge Rd. • Summerville • South Carolina • 29485 • Phone: 843-871-9706

A PLAT OF A PORTION OF THE  
**HAMPTON - JASPER COUNTY LINE**  
STARTING AT A POINT IN THE  
'SAVANNAH RIVER' ON THE GEORGIA-SOUTH CAROLINA STATE LINE,  
THEN RUNNING NORTHEASTERLY THROUGH 'COTTON HILL ROAD' (U.S. HWY. 321)  
TO A POINT NEAR THE INTERSECTION OF SEVERAL UNNAMED SOIL ROADS,  
TURNING SLIGHTLY EAST-NORTHEAST TO A POINT NEAR PLEASANT HILL ROAD (S-25-682/S-27-50),  
THEN NORTHEASTERLY TO A POINT NEAR BROWNING GATE ROAD/HERITAGE ROAD (S.C. HWY. 3),  
CONTINUING NORTHEASTERLY TO A POINT AT 'OLD TRAM ROAD' (LOCAL/S-27-21), RESPECTIVELY,  
THEN RUNNING NORTHEASTERLY TO A POINT IN THE COOSAWHATCHE RIVER WHERE THE COUNTY LINE TURNS AND FOLLOWS THE COOSAWHATCHE RIVER SOUTH-SOUTHEAST TO THE TULLFINNY RIVER,  
THE SOUTHERN CORNER OF THE STATE OF SOUTH CAROLINA

Date of Map:  
4/27/2023

Drawn: AWK  
Design: AWK  
Checked: RDB  
Approved: RDB

CAD File: 20020 HAMPTON-JASPER.dwg  
F.B. & Pg. \_\_\_\_\_  
P.B. & Pg. \_\_\_\_\_  
Pl. Board Appl. # \_\_\_\_\_

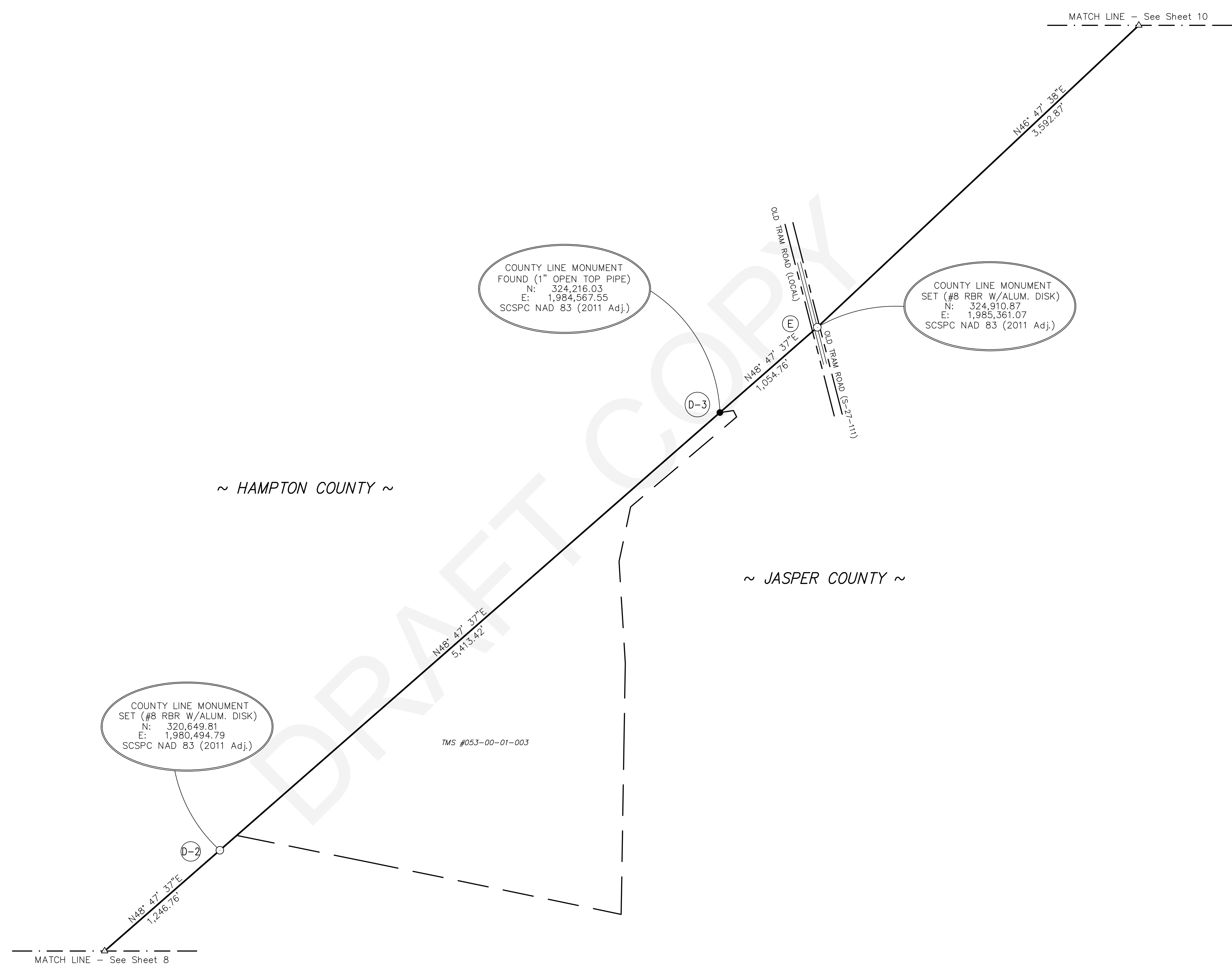
Date	Revision No.

Proj. No.: 20020  
Sheet 8 Of 10



GRID IN ORTH  
NAD 83 (2011 ADJUSTMENT)

NOTE:  
FOR 'ADDITIONAL NOTES' SEE SHEET 1.

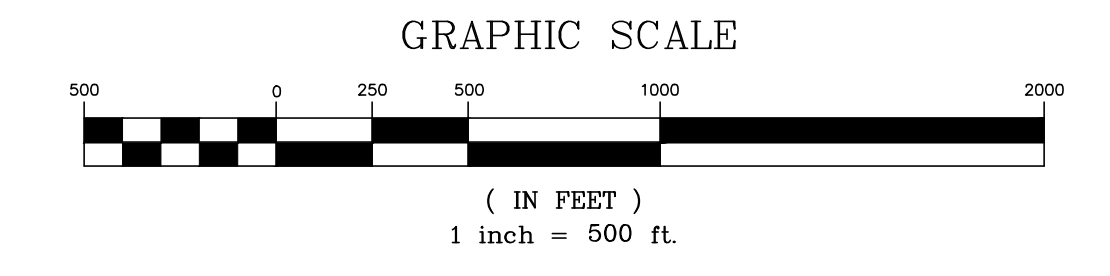


I HEREBY STATE THAT TO THE BEST OF MY PROFESSIONAL KNOWLEDGE, INFORMATION, AND BELIEF, THE SURVEY SHOWN HEREON WAS MADE IN ACCORDANCE WITH THE REQUIREMENTS OF THE 'STANDARDS OF PRACTICE MANUAL FOR SURVEYING IN SOUTH CAROLINA' (EFFECTIVE JUNE 26, 2009), AS PER ARTICLE 4, REGULATION 49-420 F., THAT THIS MAP OR PLAT IS INTENDED ONLY TO SHOW INFORMATION SURVEYED FOR A SPECIFIC STATED PURPOSE; THAT SURVEY LINES SHOWN HEREON ARE BASED ON ACTUAL FIELD SURVEY EVIDENCE AND/OR MEASUREMENTS WHICH MEET OR EXCEED THE REQUIREMENTS FOR A CLASS 'A' SURVEY AS SPECIFIED THEREIN.

NOT VALID UNLESS SIGNED IN RED INK

REVIEW ONLY ~

DAVID BRANTZ  
No. 11053  
PROFESSIONAL ENGINEER  
SOUTH CAROLINA  
C.O.A. STAMP EMBOSSED SEAL



This is not a valid, true copy of this document unless bearing an embossed seal of the surveyor or engineer.  
Copyright 2023, CORNERSTONE SURVEYING & ENGINEERING, INC. All rights reserved. Reproduction or use of this document, in whole or in part, without permission is prohibited.  
Print No. / / /  
Date / /

**CORNERSTONE**  
SURVEYING & ENGINEERING, INC.  
1240 Bacons Bridge Rd. • Summerville • South Carolina • 29485 • Phone: 843-871-9706

A PLAT OF A PORTION OF THE  
**HAMPTON-JASPER COUNTY LINE**  
STARTING AT A POINT IN THE  
'SAVANNAH RIVER' ON THE GEORGIA-SOUTH CAROLINA STATE LINE,  
THEN RUNNING NORTHEASTERLY THROUGH 'COTTON HILL ROAD' (U.S. HWY. 321)  
TO A POINT NEAR THE INTERSECTION OF SEVERAL UNNAMED SOIL ROADS,  
TURNING SLIGHTLY EAST-NORTHEAST TO A POINT NEAR 'PLEASANT HILL ROAD' (S-25-832/S-27-50),  
THEN NORTHEASTERLY TO A POINT NEAR 'BROWNING GATE ROAD' (LOCAL/S-27-271),  
CONTINUING NORTHEASTERLY TO A POINT AT 'OLD TRAM ROAD' (LOCAL/S-27-271),  
THEN RUNNING NORTHEASTERLY TO A POINT IN THE 'COOSA-WHITE RIVER' WHERE THE COUNTY  
LINE TURNS AND FOLLOWS THE 'COOSA-WHITE RIVER' SOUTH-SOUTHEAST TO THE 'TULLFINNY RIVER'.  
- HAMPTON COUNTY & JASPER COUNTY BEING LOCATED IN  
THE SOUTHERN CORNER OF THE STATE OF SOUTH CAROLINA

Date of Map:  
4/27/2023

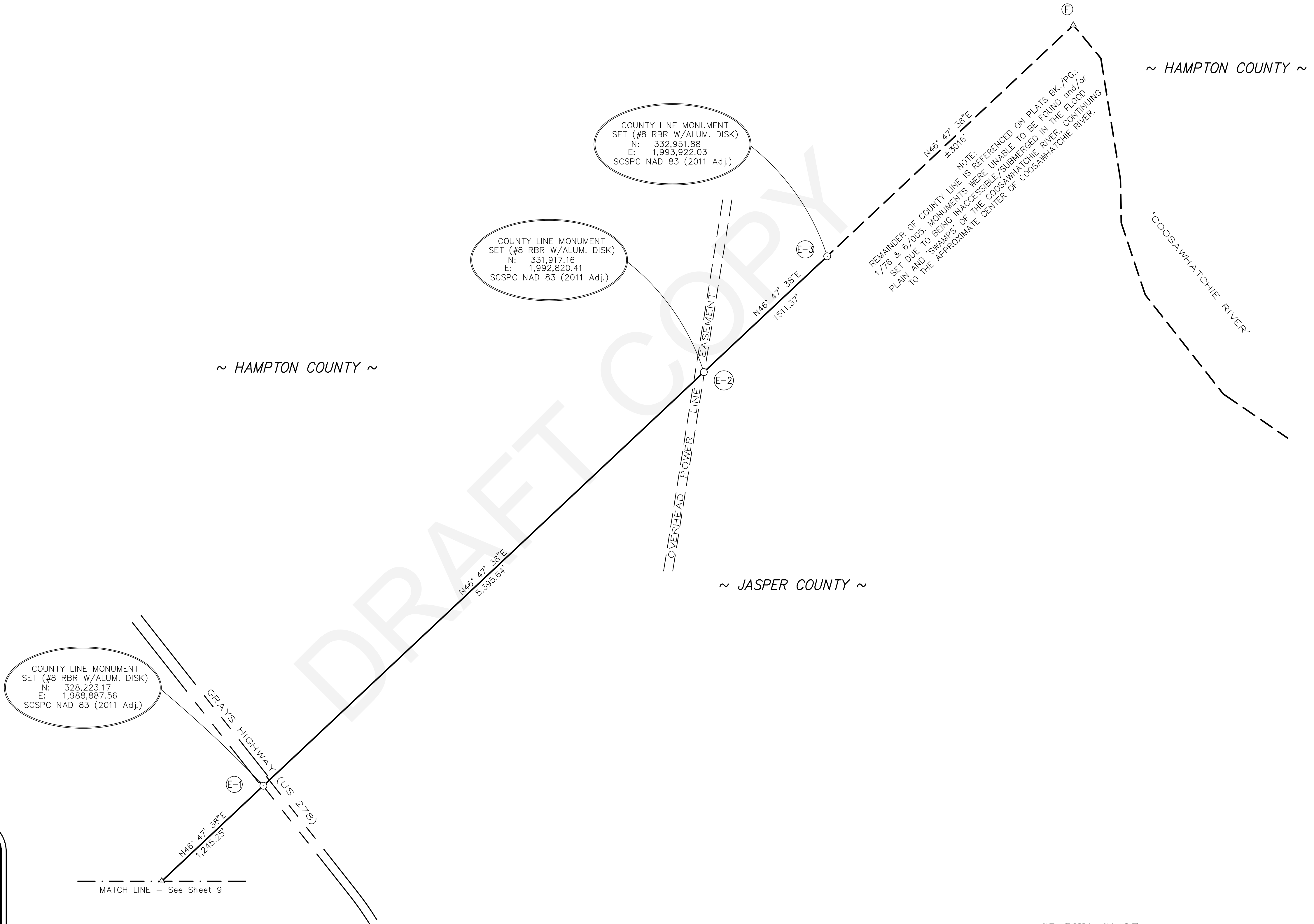
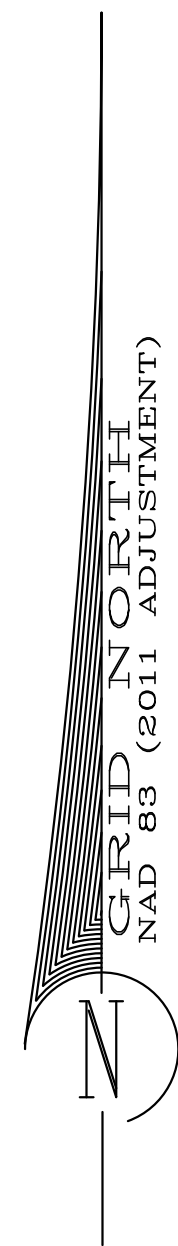
Drawn: AWK  
Design: AWK  
Checked: RDB  
Approved: RDB

CAD File: 20020 HAMPTON-JASPER.dwg  
F.B. & Pg. \_\_\_\_\_  
P.B. & Pg. \_\_\_\_\_  
Pl.Board Appl.# \_\_\_\_\_

Date	Revision No.

Proj. No.: 20020  
Sheet 9 Of 10

NOTE:  
FOR 'ADDITIONAL NOTES' SEE SHEET 1.



COUNTY LINE MONUMENT SET (#8 RBR W/ALUM. DISK)  
N: 332,951.88  
E: 1,993,922.03  
SCSPC NAD 83 (2011 Adj.)

COUNTY LINE MONUMENT SET (#8 RBR W/ALUM. DISK)  
N: 331,917.16  
E: 1,992,820.41  
SCSPC NAD 83 (2011 Adj.)

COUNTY LINE MONUMENT SET (#8 RBR W/ALUM. DISK)  
N: 328,223.17  
E: 1,988,887.56  
SCSPC NAD 83 (2011 Adj.)

REMAINDER OF COUNTY LINE IS REFERENCED ON PLATS BK./PG. 1/76 & 8/705. MONUMENTS WERE UNABLE TO BE FOUND and/or SET DUE TO BEING INACCESSIBLE (SUBMERGED IN THE FLOOD PLAIN AND 'SWAMPS' OF THE COOSAWHATCHIE RIVER, CONTINUING TO THE APPROXIMATE CENTER OF COOSAWHATCHIE RIVER.

NOTE:  
REMAINDER OF COUNTY LINE IS REFERENCED ON PLATS BK./PG. 1/76 & 8/705. MONUMENTS WERE UNABLE TO BE FOUND and/or SET DUE TO BEING INACCESSIBLE (SUBMERGED IN THE FLOOD PLAIN AND 'SWAMPS' OF THE COOSAWHATCHIE RIVER, CONTINUING TO THE APPROXIMATE CENTER OF COOSAWHATCHIE RIVER.

I HEREBY STATE THAT TO THE BEST OF MY PROFESSIONAL KNOWLEDGE, INFORMATION, AND BELIEF, THE SURVEY SHOWN HEREON WAS MADE IN ACCORDANCE WITH THE REQUIREMENTS OF THE 'STANDARDS OF PRACTICE MANUAL FOR SURVEYING IN SOUTH CAROLINA' (EFFECTIVE JUNE 26, 2009), AS PER ARTICLE 4, REGULATION 49-420 F., THAT THIS MAP OR PLAT IS INTENDED ONLY TO SHOW INFORMATION SURVEYED FOR A SPECIFIC STATED PURPOSE; THAT SURVEY LINES SHOWN HEREON ARE BASED ON ACTUAL FIELD SURVEY EVIDENCE AND/OR MEASUREMENTS WHICH MEET OR EXCEED THE REQUIREMENTS FOR A CLASS 'A' SURVEY AS SPECIFIED THEREIN.

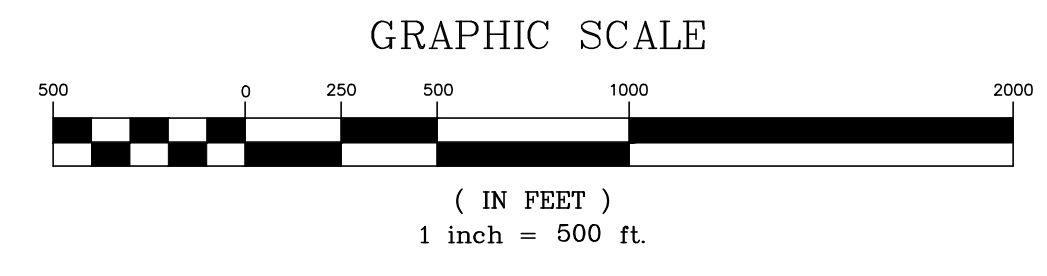
NOT VALID UNLESS SIGNED IN RED INK

**REVIEW ONLY ~**

CORNERSTONE SURVEYING & ENGINEERING, INC.  
C.O.A.

PROFESSIONAL ENGINEERING  
No. 3053  
DAVID BRANTZ  
STAMP

EMBOSSED SEAL



This is not a valid, true copy of this document unless bearing an embossed seal of the surveyor or engineer.  
Copyright 2022, CORNERSTONE SURVEYING & ENGINEERING, INC. All rights reserved. Reproduction or use of this document, in whole or in part, without permission is prohibited.  
Print No. \_\_\_\_\_  
Date: \_\_\_\_/\_\_\_\_/\_\_\_\_

**CORNERSTONE SURVEYING & ENGINEERING, INC.**  
1240 Bacons Bridge Rd. • Summerville • South Carolina • 29485 • Phone: 843-871-9706

A PLAT OF A PORTION OF THE HAMPTON-JASPER COUNTY LINE STARTING AT A POINT IN THE 'SAVANNAH RIVER' ON THE GEORGIA-SOUTH CAROLINA STATE LINE, THEN RUNNING NORTHEASTERLY THROUGH 'COTTON HILL ROAD' (U.S. HWY. 321) TO A POINT NEAR THE INTERSECTION OF SEVERAL UNNAMED SOIL ROADS, TURNING SLIGHTLY EAST-NORTHEAST TO A POINT NEAR PLEASANT HILL ROAD (S-25-682/S-27-50), THEN NORTHEASTERLY TO A POINT NEAR BROWNING GATE ROAD/HERITAGE ROAD (S.C. HWY. 5), CONTINUING NORTHEASTERLY TO A POINT AT 'OLD TRAM ROAD' (LOCAL/S-27-21), RESPECTIVELY, THEN RUNNING NORTHEASTERLY TO A POINT IN THE COOSAWHATCHIE RIVER WHERE THE COUNTY LINE TURNS AND FOLLOWS THE COOSAWHATCHIE RIVER SOUTH-SOUTHEAST TO THE TULLFERRY RIVER, THE SOUTHERN CORNER OF THE STATE OF SOUTH CAROLINA

Date of Map: 4/27/2023

Drawn: AWK  
Design: AWK  
Checked: RDB  
Approved: RDB  
CAD File: 20020 HAMPTON-JASPER.dwg  
F.B. & Pg. \_\_\_\_\_  
P.B. & Pg. \_\_\_\_\_  
Pl. Board Appl. # \_\_\_\_\_

Date	Revision No.

Proj. No.: 20020  
Sheet 100 of 10