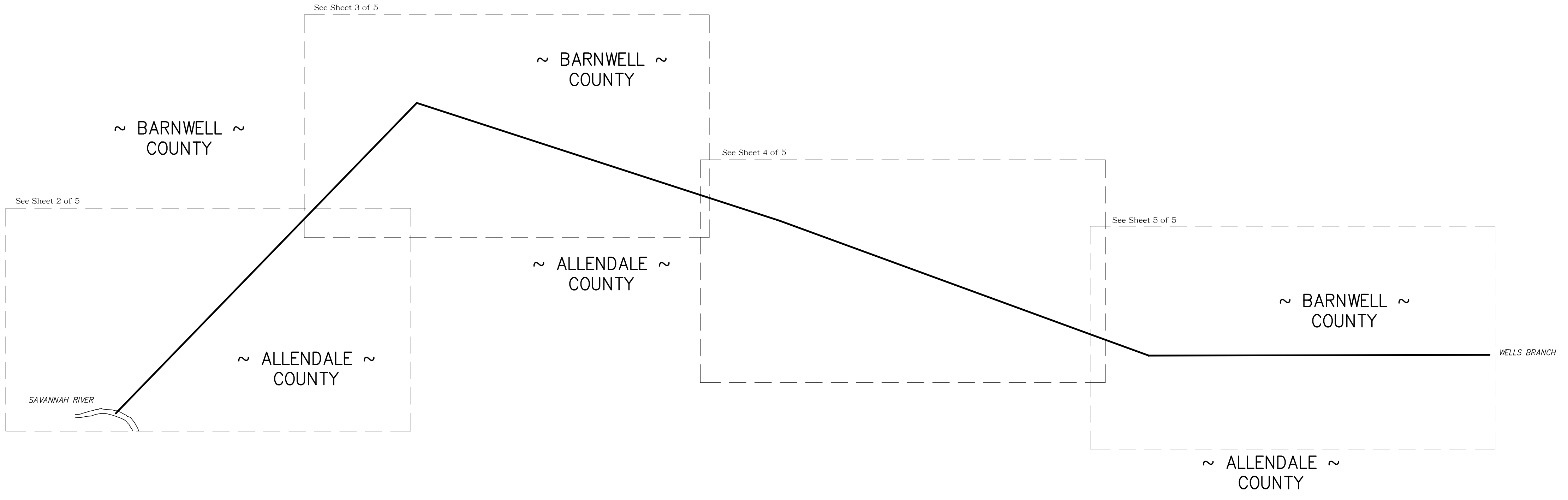


- ROAD LEGEND**
1. Steel Creek Road (S-6-493)
 2. Augusta Highway (SC Hwy. 125)
 3. Tennessee Road/Bill Road (SRS/Local)
 4. Patterson Mill Road (S-6-20)
 5. Washington Badger Road (S-3-65)
 6. River Road (SC 3)
 7. Camp Jackson Road (Private)
 8. Barnwell Road (US Hwy. 278)
 9. Lemaster Lane (Local)

LOCATION MAP
(NOT TO SCALE)

GRID NORTH
 NAD 83 (2011 ADJUSTMENT)



A PLAT OF A PORTION OF THE
ALLENDALE-BARNWELL COUNTY LINE

COMMENCING AT A POINT ON THE CENTER OF THE END OF 'STEEL LANDING' OPPOSITE A POINT ON THE 'GEORGIA-SOUTH CAROLINA STATE LINE IN THE SAVANNAH RIVER' THEN RUNNING NORTHEASTERLY TO THE INTERSECTION OF 'TENNESSEE-BILL ROAD' (SRS) - I.K.A. 'BARNWELL-ROBBINS ROAD' - WITH 'THE ROAD TO MILLET' (SRS); THEN RUNNING SOUTHEASTERLY TO 'STINSON BRIDGE' ON 'WASHINGTON BADGER' (S-3-65) / OF 'BOILING SPRINGS (S-6-38) ROAD' NORTHEAST OF THE INTERSECTION OF 'FURSE MILL ROAD' (S-3-17); THEN CONTINUING SOUTHWESTERLY TO 'CAMBROOK ROAD' (SRS) OR 'CAMBROOK LOCAL ROAD'; THEN TO A 5"x5" WOOD POST ON 'WELLS BRANCH' LYING EAST-NORTHEAST OF 'SPIGENER'S POND'.

LEGEND

- COUNTY LINE
- ADJOINER BOUNDARY LINE
- RIGHT-OF-WAY (R.O.W. OR R/W)
- SHEET BORDER
- MATCH LINE BETWEEN PLAT SHEETS
- COMPUTED POINT; NO MONUMENT FOUND &/or SET
- △ COUNTY LINE CORNER IDENTIFIER
- MONUMENT SET - #8 REBAR w/ ALUMINUM S.C.G.S. CAP AT CORNER, ON-LINE, OR AS A "CORNER WITNESS" (SEE "SURVEY MARKER CAP" DETAIL)
- M.N.&W.S. MAG NAIL & WASHER SET - "COUNTY BOUNDARY MONUMENT"
- R.B.C.S. #8 REBAR w/3-1/4" "COUNTY BOUNDARY MONUMENT - S.C.G.S. ALUMINUM CAP SET
- RBR or R.B. IRON REINFORCING BAR (REBAR)
- R.O.D. REGISTER OF DEEDS
- BK./PG. BOOK/PAGE
- D.B./PG. DEED BOOK/PAGE
- P.B./PG. PLAT BOOK/PAGE
- P.C./SL. PLAT CABINET/SLIDE
- C/L or C.P. CENTERLINE
- S.C.G.S. SOUTH CAROLINA GEODETIC SURVEY
- SCDOT SOUTH CAROLINA DEPARTMENT OF TRANSPORTATION
- M.L. MATCHLINE
- HWY. HIGHWAY
- ST. STREET
- DIST. DISTURBED
- E/S EACH SIDE
- REF. REFERENCE
- PVT. PRIVATE
- INT. INTERSECTION
- SRS U.S. DEPARTMENT OF ENERGY 'SAVANNAH RIVER SITE'
- D.B.H. DIAMETER AT BREST HEIGHT (NOMINALLY 4.5' ABOVE GROUND LEVEL)
- DRAINAGE PIPE (SIZE & TYPE NOTED)

NOTES

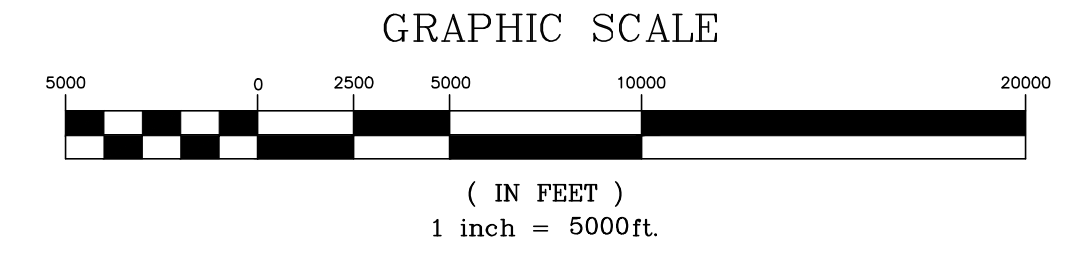
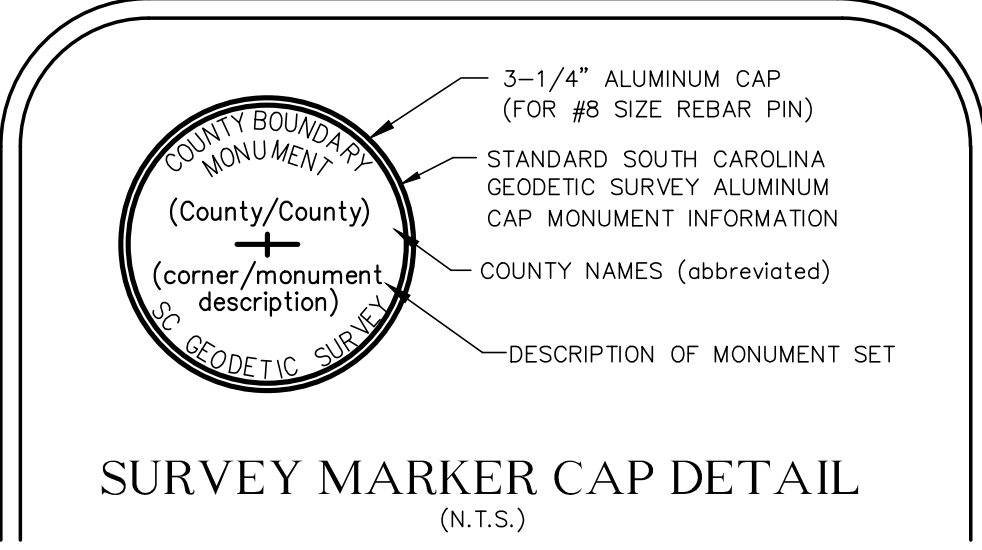
1. THIS IS NOT A VALID, TRUE COPY OF THIS DOCUMENT UNLESS IT BEARS THE ORIGINAL SIGNATURE, SIGNATURE DATE, AND THE RAISED, EMBOSSED SEAL OF THE REGISTERED PROFESSIONAL LAND SURVEYOR NOTED HEREON.
2. THE PURPOSE OF THIS PLAT IS ONLY TO MAP THE SECTION OF THE ALLENDALE-BARNWELL COUNTY LINE RUNNING FROM THE SAVANNAH RIVER TO 'WELLS BRANCH'. IT IS NOT INTENDED NOR SHOULD BE CONSTRUED TO BE A BOUNDARY SURVEY OR BOUNDARY PLAT OF ANY OF THE PROPERTY PARCELS ADJACENT TO, CROSSING, OR NEAR THE AFOREMENTIONED COUNTY LINE. THE ALLENDALE-BARNWELL COUNTY LINE AND BOUNDARY LINES OF THE ADJOINING PROPERTIES MAY BE CONGRUENT IF AND ONLY IF SO SPECIFIED BY THE SOUTH CAROLINA LEGISLATIVE ACT(S) THAT ESTABLISH AND DESCRIBE OR DEFINE THE COUNTY LINE AS IT IS BEING PLATTED HEREON. HOWEVER, IN NO WAY IS THIS SURVEY OR PLAT OF THIS PORTION OF THE ALLENDALE-BARNWELL COUNTY LINE GIVING WARRANTY TO THE TITLE PROPERTY BOUNDARIES OF THE ADJACENT PARCELS BEING SHOWN OR REFERENCED HEREON.
3. ANY PARCEL INFORMATION REFERENCED ON THIS PLAT IS ONLY THAT USED TO SHOW THE PUBLIC RECORD OWNERSHIP OF THE PROPERTIES ADJOINING OR NEAR THE ALLENDALE-BARNWELL COUNTY LINE BEING FOUND ON RECORD, RESPECTIVELY IN THE ALLENDALE AND BARNWELL REGISTER OF DEEDS (R.O.D.) OFFICES AND DOES NOT CONSTITUTE A TITLE SEARCH, TITLE ABSTRACT, OR TITLE OPINION FOR ANY OF THE PROPERTIES NOTED HEREON.
4. THIS PLAT HAS BEEN DONE FOR THE STATE OF SOUTH CAROLINA IN ACCORDANCE WITH THEIR PLANNED USE AND PURPOSE OF THE INFORMATION SHOWN HEREON. ALL OTHER PARTIES ARE SUBSEQUENTLY PUT ON NOTICE AS TO THE LIMITED DEGREE OF RELIANCE UPON THIS PLAT BY THIRD PROPERTIES.
5. NO SURVEYS, EVALUATION OR DELINEATION OF ANY ENVIRONMENTAL ISSUES OR MATTERS SUCH AS HAZARDOUS WASTE CONTAMINATION, SUBSURFACE CHARACTERISTICS (ALONG OR ON EITHER SIDE OF THE COUNTY LINES SHOWN), WETLANDS, ENDANGERED SPECIES, etc. HAVE BEEN DONE FOR THE ADJACENT PROPERTIES, AND THIS SURVEY DOES NOT CERTIFY AS TO THE PRESENCE OR ABSENCE OF SUCH CONDITIONS.
6. FOR ADDITIONAL NOTES SPECIFIC TO THIS SURVEY, THE INFORMATION FOR THIS PLAT, AND THE COUNTY BOUNDARY LINE SHOWN HEREON, SEE SHEETS 2 thru 5 of 5.
7. ALL 'NORTHING' (N:) and 'EASTING' (E:) COORDINATES SHOWN ON THIS PLAT ARE EXPRESSLY GIVEN AS SOUTH CAROLINA STATE PLANE COORDINATES (SCSPC), ZONE 3900, NAD 83, 2011 ADJUSTMENT (FT.). ON EACH SHEET, THERE IS A 'COUNTY LINE CORNER & MONUMENT DESCRIPTION TABLE' OF THE SOUTH CAROLINA STATE PLANE COORDINATE DATA FOR EACH CORNER ALONG THE ALLENDALE-BARNWELL (INSERT LINE DESCRIPTION).
8. THE ORIENTATION OF THIS PLAT IS 'SCSPC GRID NORTH', NAD 83, 2011 ADJUSTMENT, ZONE 3900. ALL LINES, DIMENSIONS, AND DISTANCES SHOWN HEREON ARE SCALED TO GRID. NO COMBINED SCALE FACTOR (C.S.F.) HAS BEEN CALCULATED FOR THIS PLAT.

I HEREBY STATE THAT TO THE BEST OF MY PROFESSIONAL KNOWLEDGE, INFORMATION, AND BELIEF, THE SURVEY SHOWN HEREON WAS MADE IN ACCORDANCE WITH THE REQUIREMENTS OF THE 'STANDARDS OF PRACTICE MANUAL FOR SURVEYING IN SOUTH CAROLINA', AND MEETS OR EXCEEDS THE REQUIREMENTS FOR A CLASS 'A' SURVEY AS SPECIFIED THEREIN.

DAVID BRANTLEY
No. 11053
SOUTH CAROLINA
PROFESSIONAL ENGINEER

NOT VALID UNLESS SIGNED IN RED INK

C.O.A. STAMP EMBOSSED SEAL



This is not a valid, true copy of this document unless bearing on the embossed seal of the surveyor or engineer.
 Copyright © 2023, CORNERSTONE SURVEYING & ENGINEERING, INC.
 All rights reserved. Reproduction or use of this document, in whole or in part, without permission is prohibited.
 Print No. _____
 Date: ____/____/____

CORNERSTONE

SURVEYING & ENGINEERING, INC.

1240 Bacons Bridge Rd. • Summerville • South Carolina • 29485 • Phone: 843-871-9706

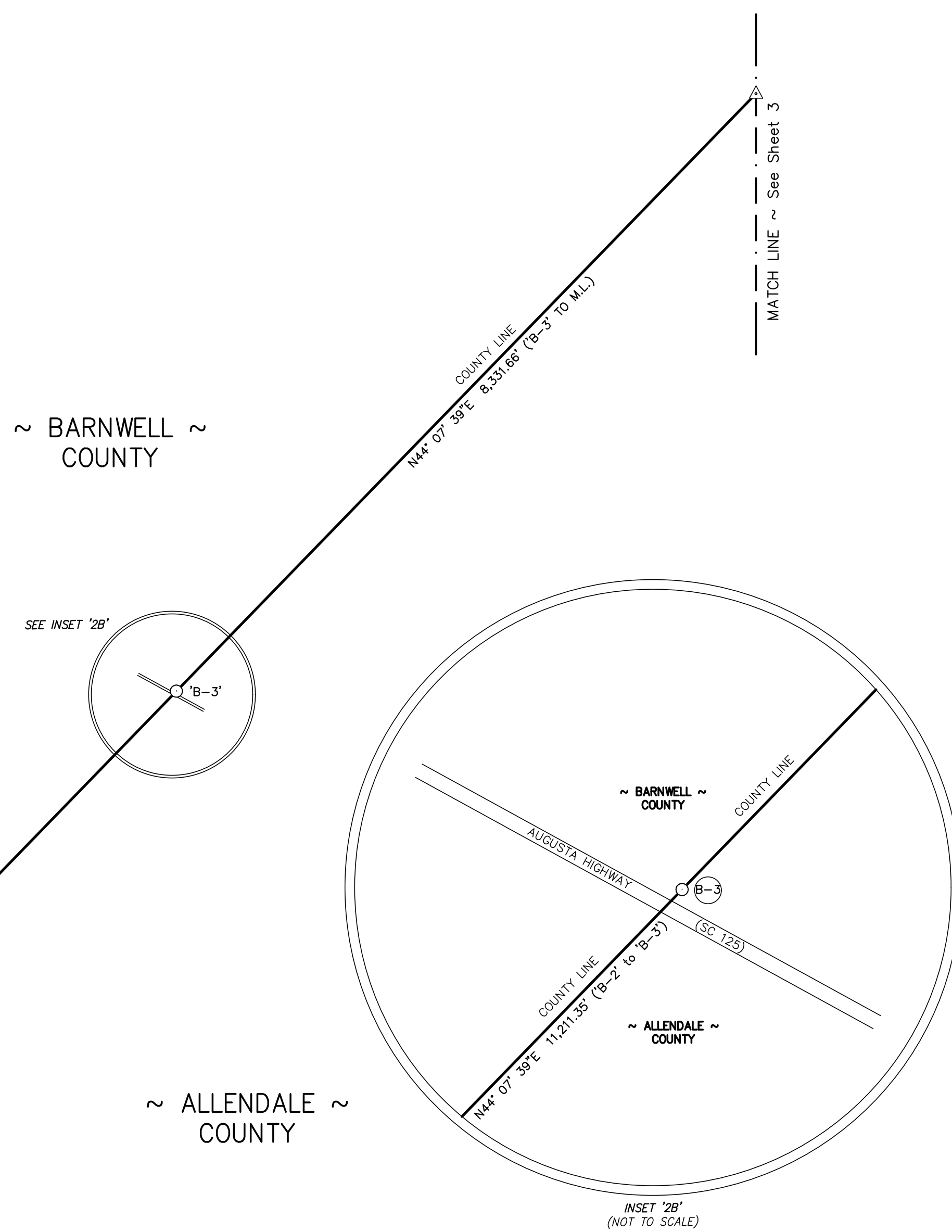
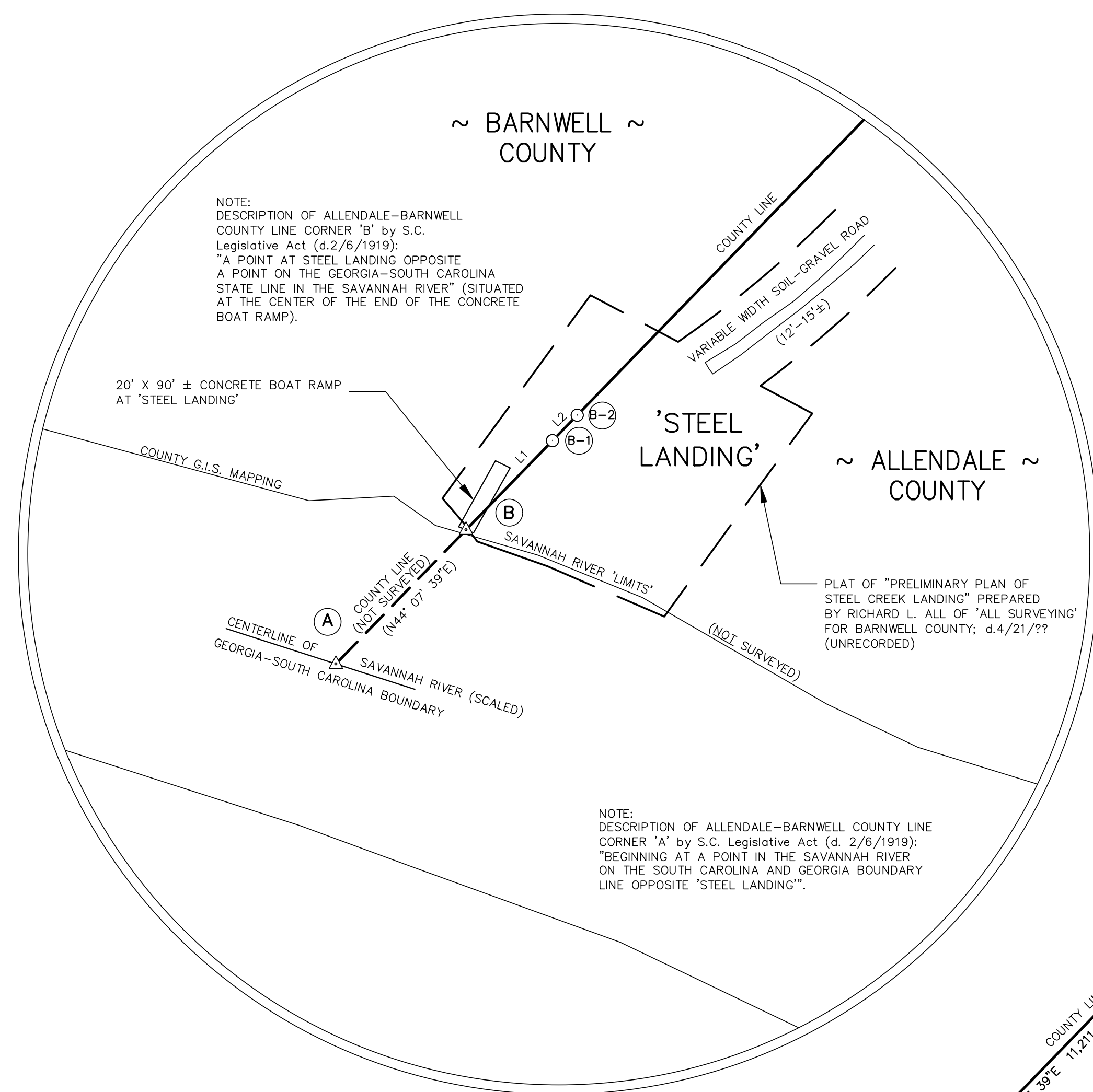
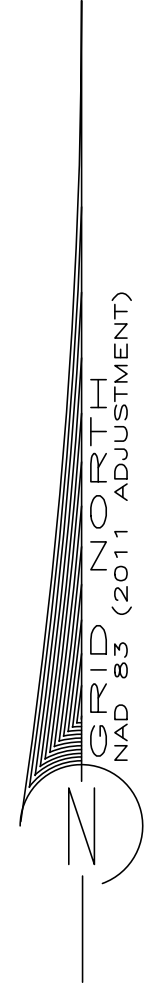
A PLAT OF A PORTION OF THE
ALLENDALE-BARNWELL COUNTY LINE
 COMMENCING AT A POINT ON THE CENTER OF THE END OF 'STEEL LANDING' OPPOSITE A POINT ON THE 'GEORGIA-SOUTH CAROLINA STATE LINE IN THE SAVANNAH RIVER' THEN RUNNING NORTHEASTERLY TO THE INTERSECTION OF 'TENNESSEE-BILL ROAD' (SRS) - I.K.A. 'BARNWELL-ROBBINS ROAD' - WITH 'THE ROAD TO MILLET' (SRS); THEN RUNNING SOUTHEASTERLY TO 'STINSON BRIDGE' ON 'WASHINGTON BADGER' (S-3-65) / OF 'BOILING SPRINGS (S-6-38) ROAD' NORTHEAST OF THE INTERSECTION OF 'FURSE MILL ROAD' (S-3-17); THEN CONTINUING SOUTHWESTERLY TO 'CAMBROOK ROAD' (SRS) OR 'CAMBROOK LOCAL ROAD'; THEN TO A 5"x5" WOOD POST ON 'WELLS BRANCH' LYING EAST-NORTHEAST OF 'SPIGENER'S POND'.

Date of Survey: 4/19/2023

Drawn: KWM
 Design: KAW
 Checked: KAW
 Approved: KAW
 CAD File:
 F.B. & Pg. N/A
 P.B. & Pg. N/A
 Pl.Board Appl.# N/A

Date	Revision No.

Proj. No.: 20020-001
Sheet 1 of 5

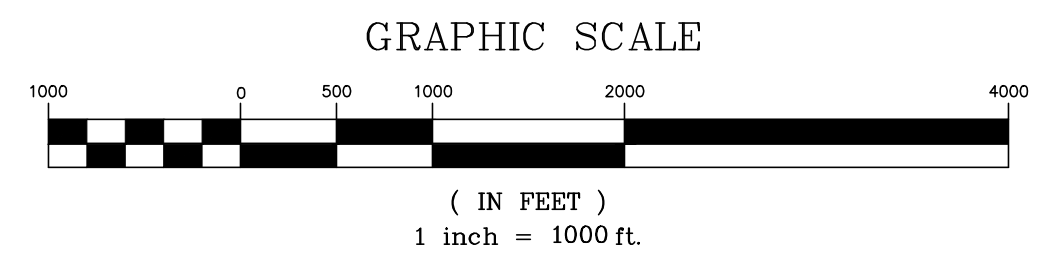


COUNTY LINE CORNER & MONUMENT DESCRIPTION TABLE

CORNER/WITNESS	DESCRIPTION	NORTHING	EASTING
A	COMPUTED POINT	459,709.21	1,812,037.45
B	COMPUTED POINT	459,869.35	1,812,192.78
B-1	ALLENDALE-BARNWELL ON-LINE MONUMENT	459,939.97	1,812,261.29
B-2	ALLENDALE-BARNWELL ON-LINE MONUMENT	460,015.33	1,812,334.39
B-3	ALLENDALE-BARNWELL ON-LINE MONUMENT	468,062.74	1,820,140.39

LINE TABLE

LINE	LENGTH	DIRECTION	LINE DESCRIPTION
L1	98.39	N44° 07' 39"E	'B' to 'B-1'
L2	104.99	N44° 07' 39"E	'B-1' to 'B-2'



I HEREBY STATE THAT TO THE BEST OF MY PROFESSIONAL KNOWLEDGE, INFORMATION, AND BELIEF, THE SURVEY SHOWN HEREON WAS MADE IN ACCORDANCE WITH THE REQUIREMENTS OF THE "STANDARDS OF PRACTICE MANUAL FOR SURVEYING IN SOUTH CAROLINA", AND MEETS OR EXCEEDS THE REQUIREMENTS FOR A CLASS "A" SURVEY AS SPECIFIED THEREIN.

PROFESSIONAL ENGINEER
No. 11053
R. DAVID BRANTLEY

NOT VALID UNLESS
SIGNED IN RED INK

C.O.A.

STAMP

EMBOSSED SEAL

This is not a valid, true copy of the document unless bearing on the embossed seal of the surveyor or engineer.
 Copyright 2023, Cornerstone Surveying & Engineering, Inc. All rights reserved. Reproduction or use of this document, in whole or in part, without permission is prohibited.
 Print No. _____
 Date: / /

CORNERSTONE
SURVEYING & ENGINEERING, INC.

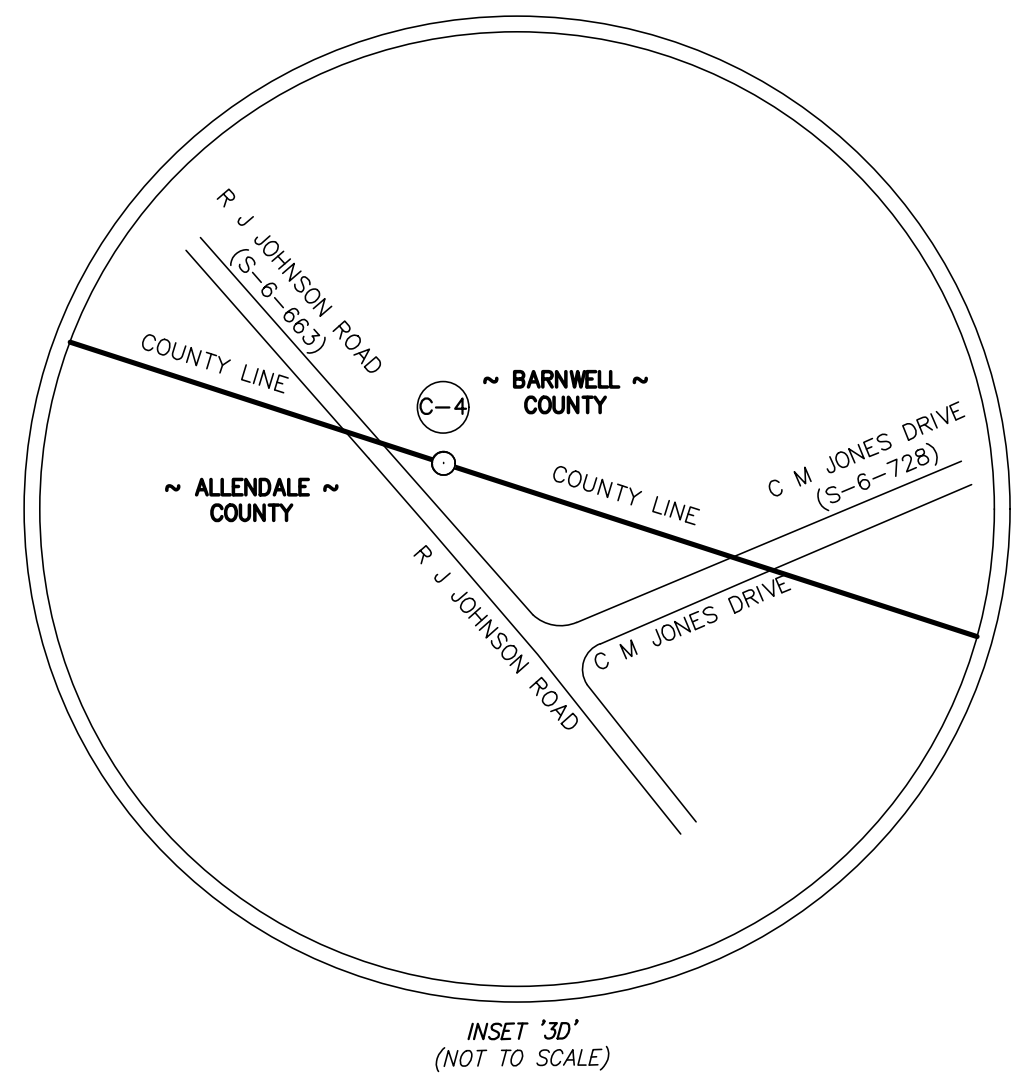
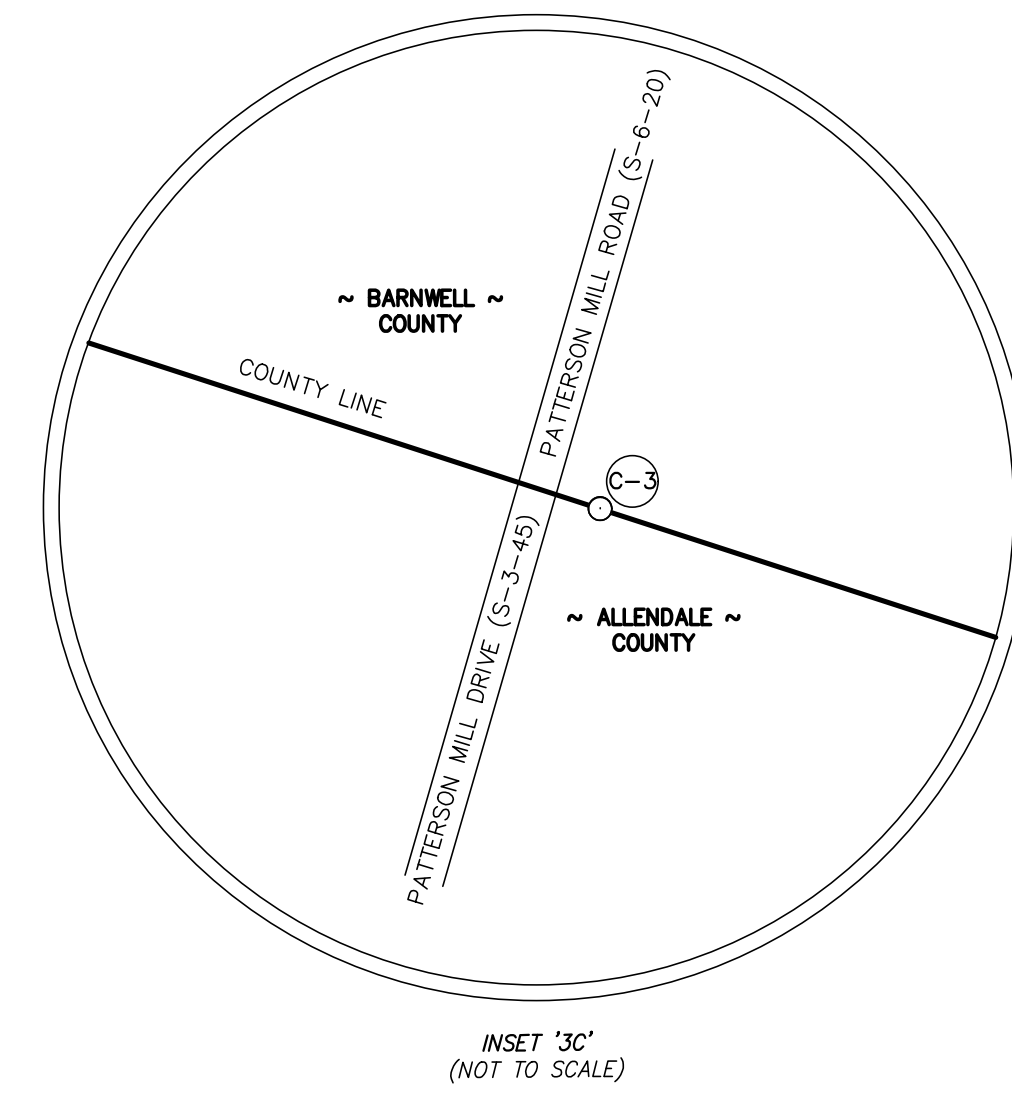
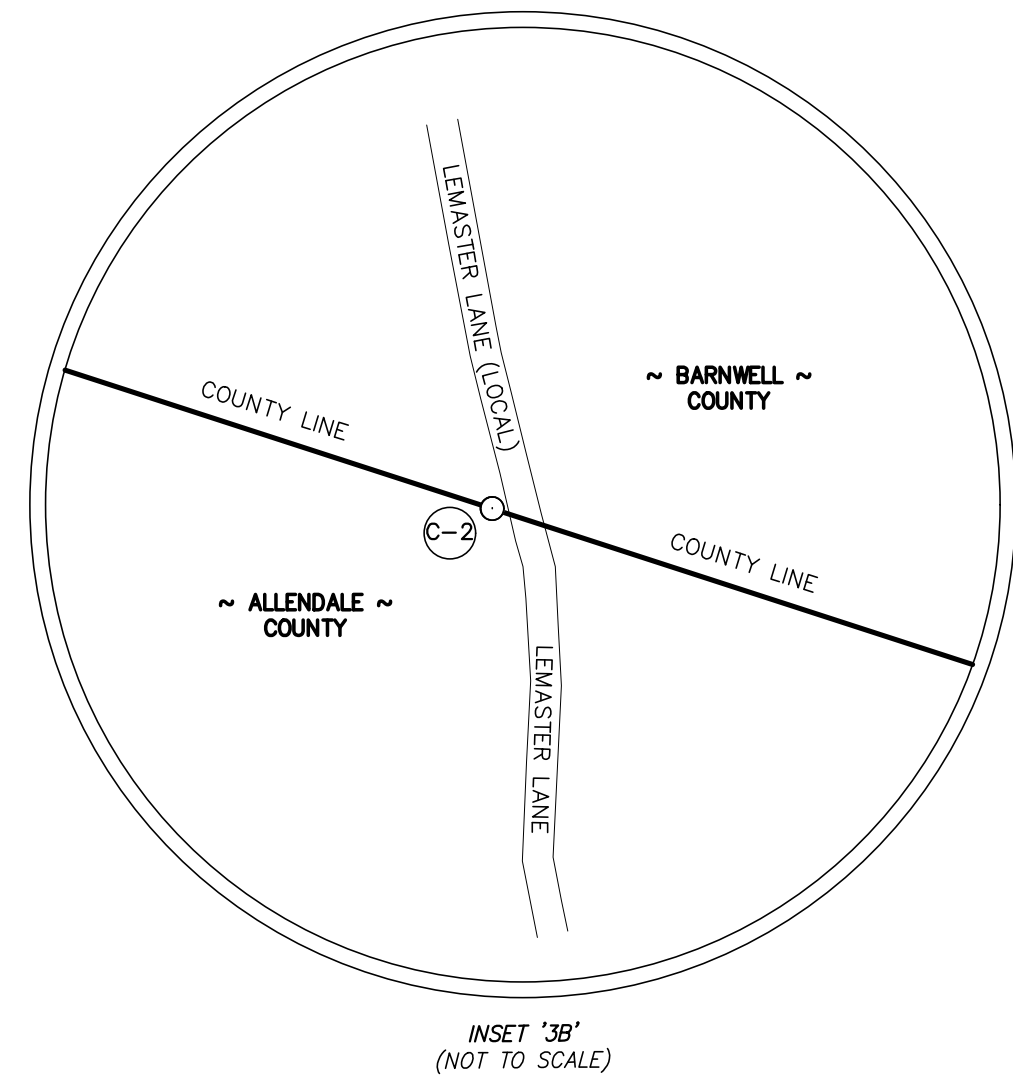
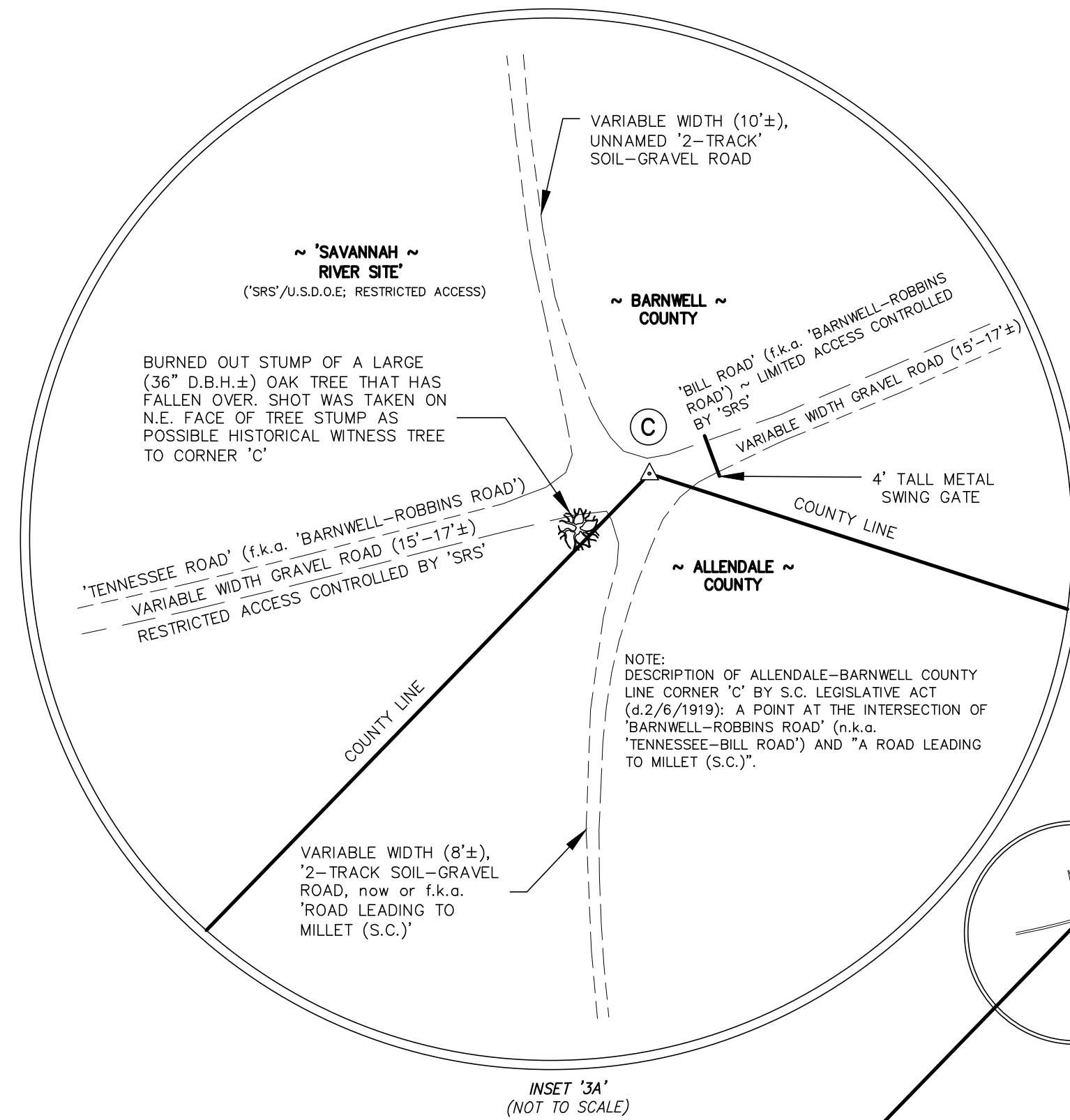
1240 Bacon's Bridge Rd. • Summerville • South Carolina • 29485 • Phone: 843-871-9706

A PLAT OF A PORTION OF THE
ALLENDALE-BARNWELL COUNTY LINE
 COMMENCING AT A POINT ON THE CENTER OF THE END OF 'STEEL LANDING' OPPOSITE A POINT ON THE 'GEORGIA-SOUTH CAROLINA STATE LINE IN THE SAVANNAH RIVER' THEN RUNNING NORTHEASTERLY TO THE INTERSECTION OF 'TENNESSEE-BILL ROAD' (GRS) - E.g. 'BARNWELL-ROBBINS ROAD' - WITH 'THE ROAD TO MILLET' (GRS), THEN RUNNING SOUTHEASTERLY TO STANSON BRIDGE ON 'WASHINGTON BADGER' (S-3-65) / OF THE INTERSECTION OF 'FURSE MILLS ROAD' (S-3-17); THEN CONTINUING SOUTHEASTERLY TO THE 'LAND JACKSON ROAD' (A LOCAL ROAD); CROSSING OVER 'FIDDLE POND CREEK' AT THE NORTHWEST END OF 'CAMP JACKSON ROAD' (A LOCAL ROAD); THEN TO A 5'x5" WOOD POST ON 'WELLS BRANCH' LYING EAST-NORTHEAST OF 'SPIGENER'S POND'.

Date of Survey:
 4/19/2023
 Drawn: KWM
 Design: KAW
 Checked: KAW
 Approved: KAW
 CAD File:
 F.B. & Pg. N/A
 P.B. & Pg. N/A
 Pl.Board Appl.# N/A

Date	Revision No.

Proj. No.: 20020-001
 Sheet 2 of 5



CORNER/WITNESS	DESCRIPTION	NORTHING	EASTING
C	COMPUTED POINT	482,603.11	1,834,244.57
C-2	ALLENDALE-BARNWELL ON-LINE MONUMENT	481,472.38	1,837,729.40
C-3	ALLENDALE-BARNWELL ON-LINE MONUMENT	477,641.36	1,849,536.22
C-4	ALLENDALE-BARNWELL ON-LINE MONUMENT	476,875.08	1,851,897.83

MATCH LINE ~ See Sheet 2

MATCH LINE ~ See Sheet 4

GRID NORTH
NAD 83 (2011 ADJUSTMENT)

This is not a valid, true copy of the document unless bearing on the embossed seal of the surveyor or engineer.
Copyright 2023, CORNERSTONE SURVEYING & ENGINEERING, INC. All rights reserved. Reproduction or use of this document, in whole or in part, without permission is prohibited.
Print No. _____
Date: ____/____/____

CORNERSTONE
SURVEYING & ENGINEERING, INC.
1240 Bacons Bridge Rd. • Summerville • South Carolina • 29485 • Phone: 843-871-9706

ALLENDALE-BARNWELL COUNTY LINE

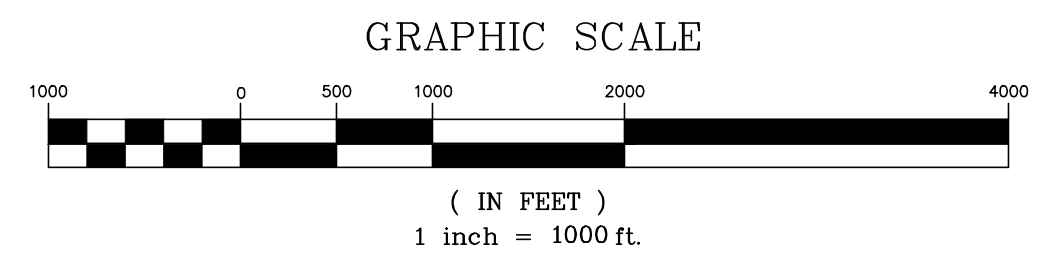
A PLAT OF A PORTION OF THE
ALLENDALE-BARNWELL COUNTY LINE
COMMENCING AT A POINT ON THE CENTER OF THE END OF 'STEEL LANDING' OPPOSITE A POINT ON THE 'GEORGIA-SOUTH CAROLINA STATE LINE IN THE SAVANNAH RIVER THEN RUNNING NORTHEASTERLY TO THE INTERSECTION OF 'TENNESSEE-BILL ROAD' (SRS) - f.k.a. 'BARNWELL-ROBBINS ROAD' - WITH 'THE ROAD TO MILLET' (SRS); THEN RUNNING SOUTHEASTERLY TO 'R.J. JOHNSON BRIDGE ON 'WASHINGTON BADGER' (S-3-65) / OF THE INTERSECTION OF 'ELBE MILL ROAD' (S-3-17); THEN CONTINUING SOUTHEASTERLY TO THE 'LAND BRIDGE' CROSSING OVER 'FIDDLE POND CREEK' AT THE NORTHWEST END OF 'CAMP JACKSON ROAD' (A LOCAL ROAD); THEN TO A 5'x5' WOOD POST ON 'WELLS BRANCH' LYING EAST-NORTHEAST OF 'SPIGENER'S POND'

I HEREBY STATE THAT TO THE BEST OF MY PROFESSIONAL KNOWLEDGE, INFORMATION, AND BELIEF, THE SURVEY SHOWN HEREON WAS MADE IN ACCORDANCE WITH THE REQUIREMENTS OF THE 'STANDARDS OF PRACTICE MANUAL FOR SURVEYING IN SOUTH CAROLINA', AND MEETS OR EXCEEDS THE REQUIREMENTS FOR A CLASS 'A' SURVEY AS SPECIFIED THEREIN.

DAVID BRANTLEY
No. 11053
PROFESSIONAL ENGINEER

R. DAVID BRANTLEY
No. 11053
PROFESSIONAL ENGINEER

NOT VALID UNLESS SIGNED IN RED INK



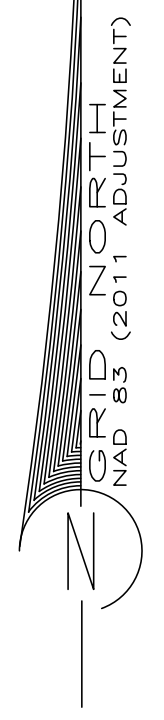
Date of Survey:
4/19/2023
 Drawn: KWM
 Design: KAW
 Checked: KAW
 Approved: KAW
 CAD File:
 F.B. & Pg. N/A
 P.B. & Pg. N/A
 Pl.Board Appl.# N/A

Date	Revision No.

MATCH LINE ~ See Sheet 3

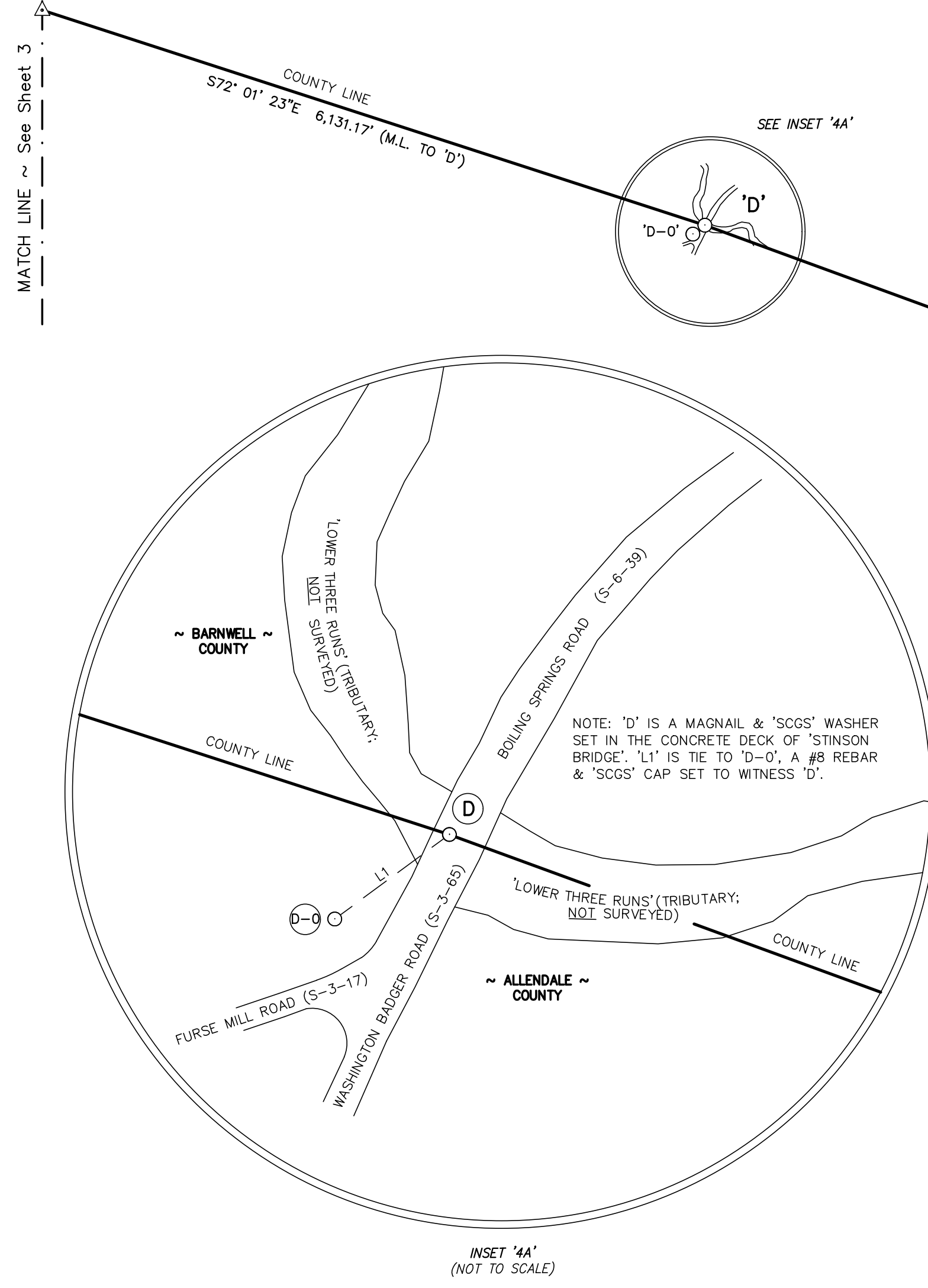
COUNTY LINE CORNER & MONUMENT DESCRIPTION TABLE			
CORNER/WITNESS	DESCRIPTION	NORTHING	EASTING
D	ALLEDALE-BARNWELL C.L. CORNER (MAG W/WASHER)	473,925.12	1,860,989.35
D-0	ALLEDALE-BARNWELL TIE MONUMENT	473,847.27	1,860,883.70
D-1	ALLEDALE-BARNWELL ON-LINE MONUMENT	470,179.23	1,871,240.03
D-2	ALLEDALE-BARNWELL ON-LINE MONUMENT	467,216.07	1,879,348.78
D-3	CALCULATED POINT	467,212.74	1,879,357.88

LINE TABLE			
LINE	LENGTH	DIRECTION	LINE DESCRIPTION
L1	131.235	S53° 36' 53"W	'D' to 'D-0'

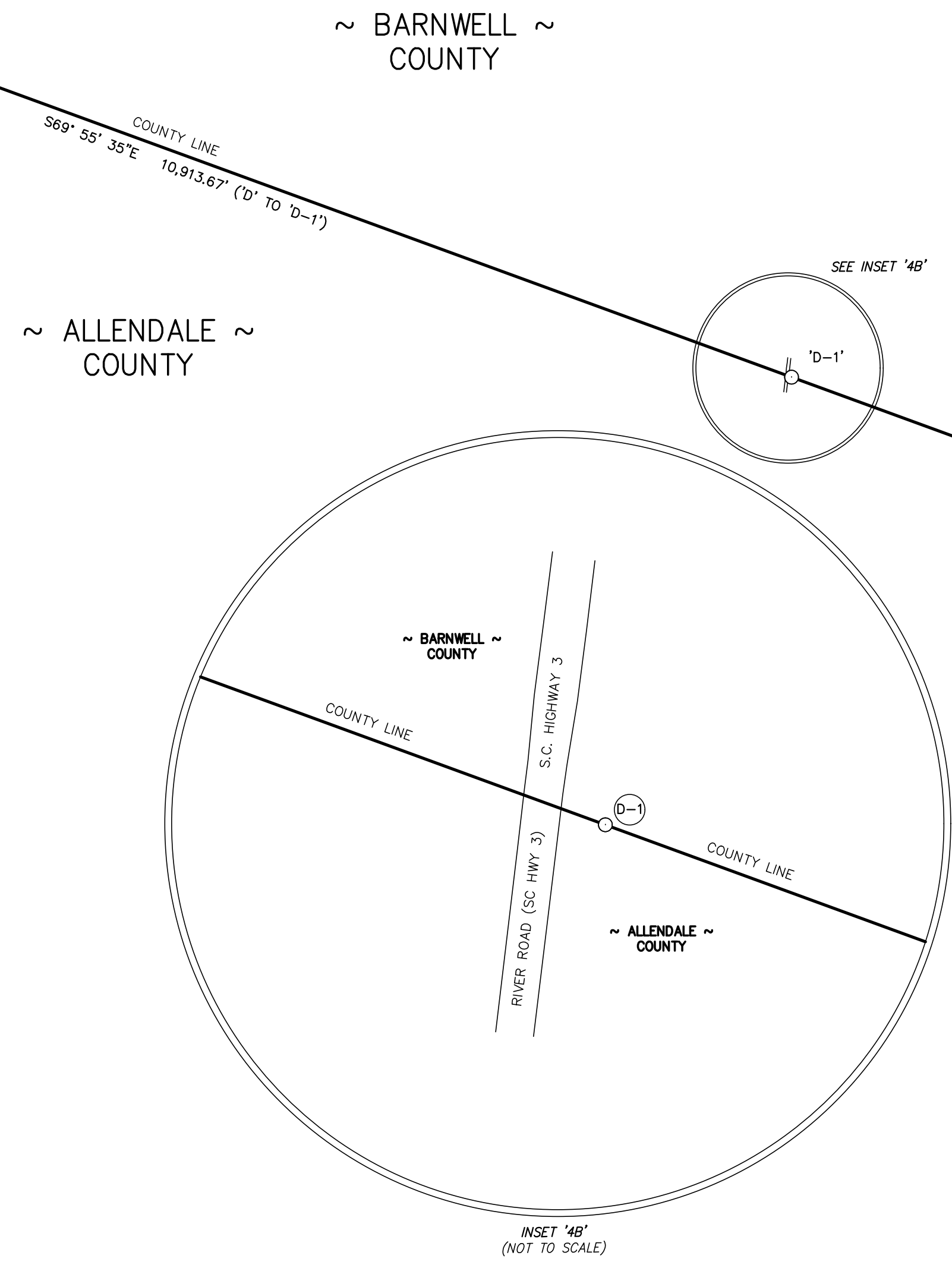


This is not a valid, true copy of this document unless bearing on the embossed seal of the surveyor or engineer.
 Copyright 2023, CORNERSTONE SURVEYING & ENGINEERING, INC. All rights reserved. Reproduction or use of this document, in whole or in part, without permission is prohibited.
 Print No. _____
 Date: ____/____/____

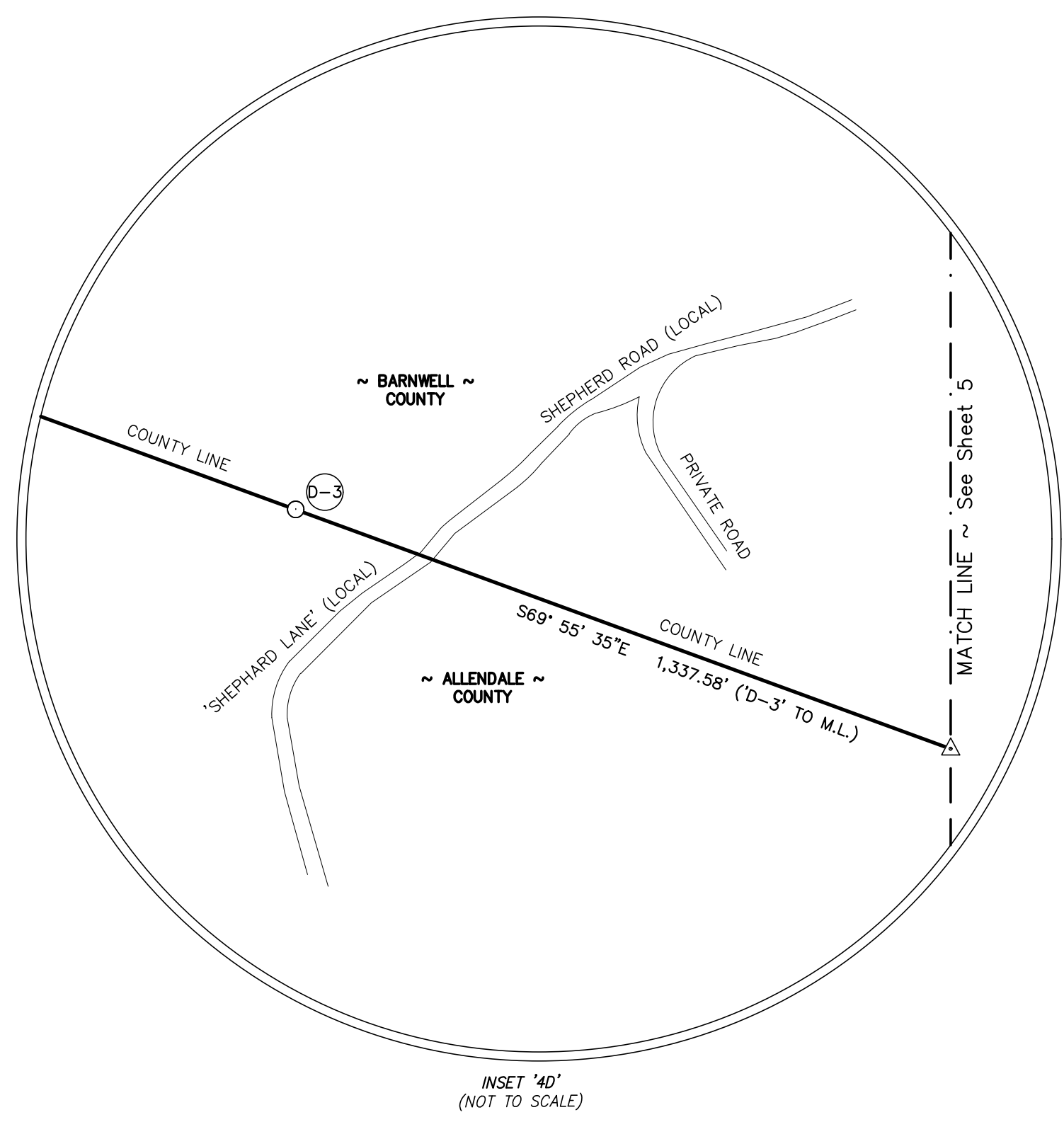
CORNERSTONE
 SURVEYING & ENGINEERING, INC.
 1240 Bacons Bridge Rd. • Summerville • South Carolina • 29485 • Phone: 843-871-9706



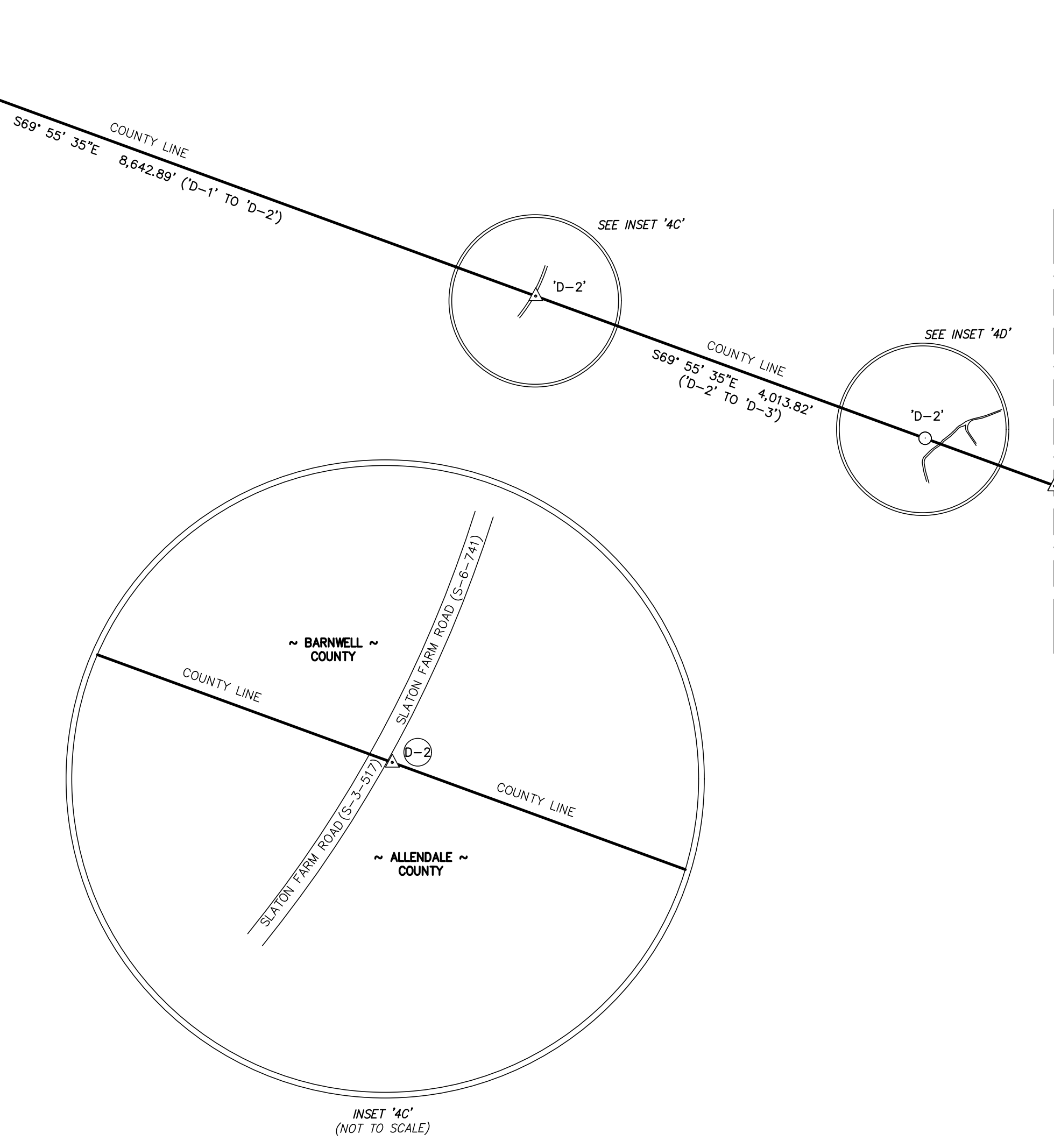
INSET '4A' (NOT TO SCALE)



INSET '4B' (NOT TO SCALE)



INSET '4D' (NOT TO SCALE)



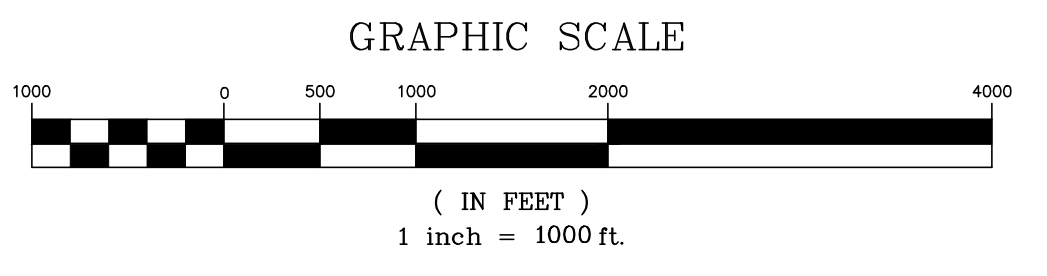
INSET '4C' (NOT TO SCALE)

I HEREBY STATE THAT TO THE BEST OF MY PROFESSIONAL KNOWLEDGE, INFORMATION, AND BELIEF, THE SURVEY SHOWN HEREON WAS MADE IN ACCORDANCE WITH THE REQUIREMENTS OF THE "STANDARDS OF PRACTICE MANUAL FOR SURVEYING IN SOUTH CAROLINA", AND MEETS OR EXCEEDS THE REQUIREMENTS FOR A CLASS "A" SURVEY AS SPECIFIED THEREIN.

PROFESSIONAL ENGINEER
 No. 11053
 R. DAVID BRANTLEY

NOT VALID UNLESS SIGNED IN RED INK

EMBOSSED SEAL



ALLEDALE-BARNWELL COUNTY LINE

A PLAT OF A PORTION OF THE
 COMMENCING AT A POINT ON THE CENTER OF THE END OF 'STEEL LANDING' OPPOSITE A POINT ON THE 'GEORGIA-SOUTH CAROLINA STATE LINE IN THE SAVANNAH RIVER THEN RUNNING NORTHEASTERLY TO THE INTERSECTION OF TENNESSEE-BILL ROAD' (SRS) - f.k.g. BARNWELL-ROBBINS ROAD - WITH 'THE ROAD TO MILLET' (SRS), THEN RUNNING SOUTHEASTERLY TO 'STINSON BRIDGE' ON 'WASHINGTON BADGER' (S-3-65) / 'BOILING SPRINGS' (S-6-39) ROAD 'NORTHEAST' OF 'MILLET' (S-3-17), THEN CONTINUING SOUTHEASTERLY TO THE 'LAND BRIDGE' CROSSING OVER 'FIDDLE POND CREEK' AT THE NORTHWEST END OF 'CAMP JACKSON ROAD' (A LOCAL ROAD), THEN TO A 5'x5' WOOD POST ON 'WELLS BRANCH' LYING EAST-NORTHEAST OF 'SPIGENER'S POND'.

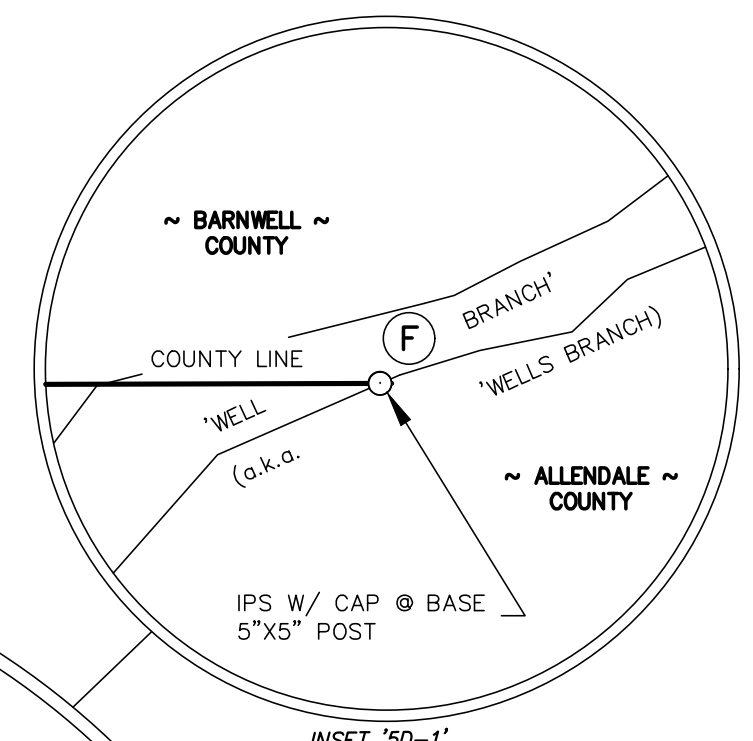
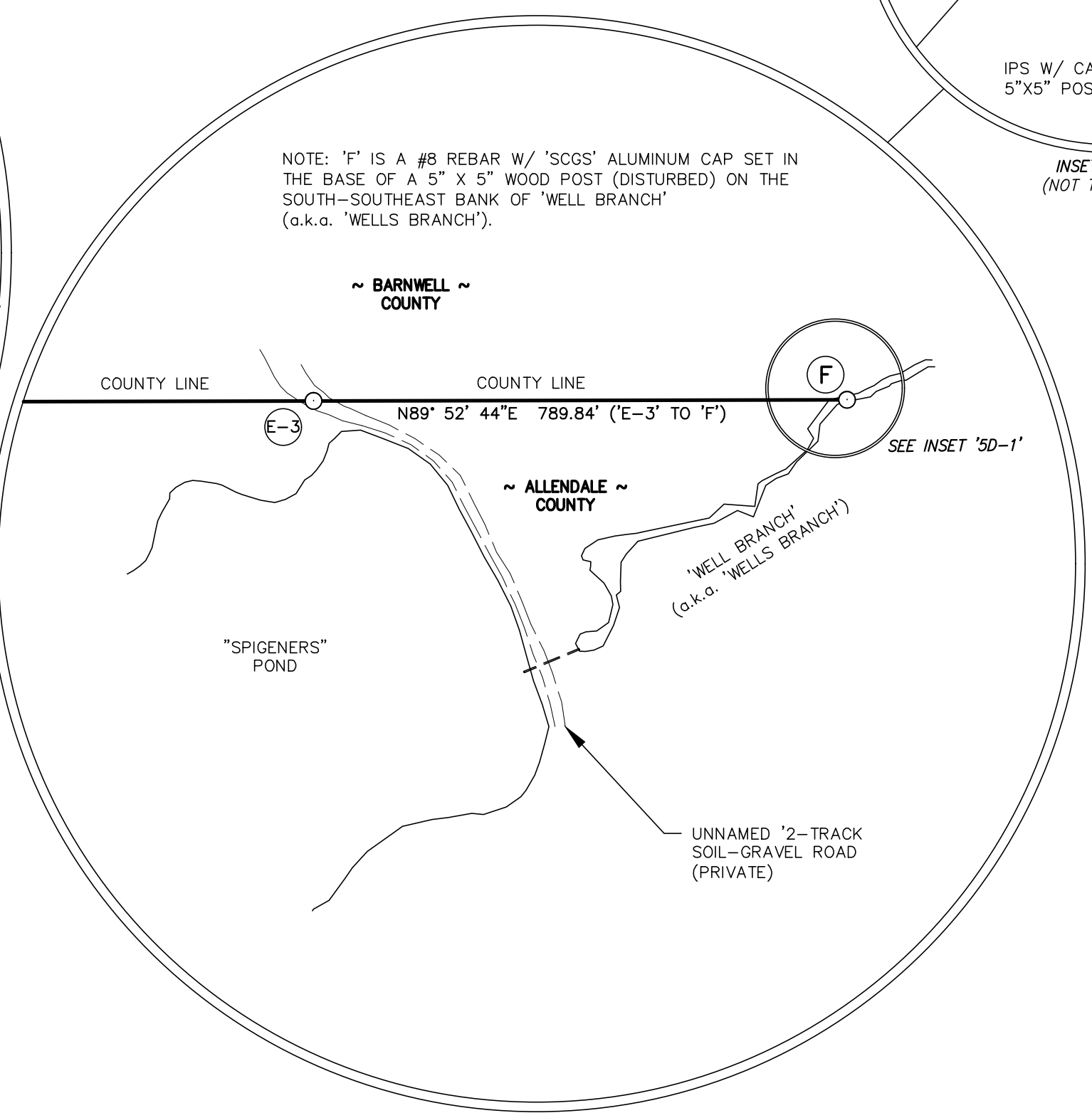
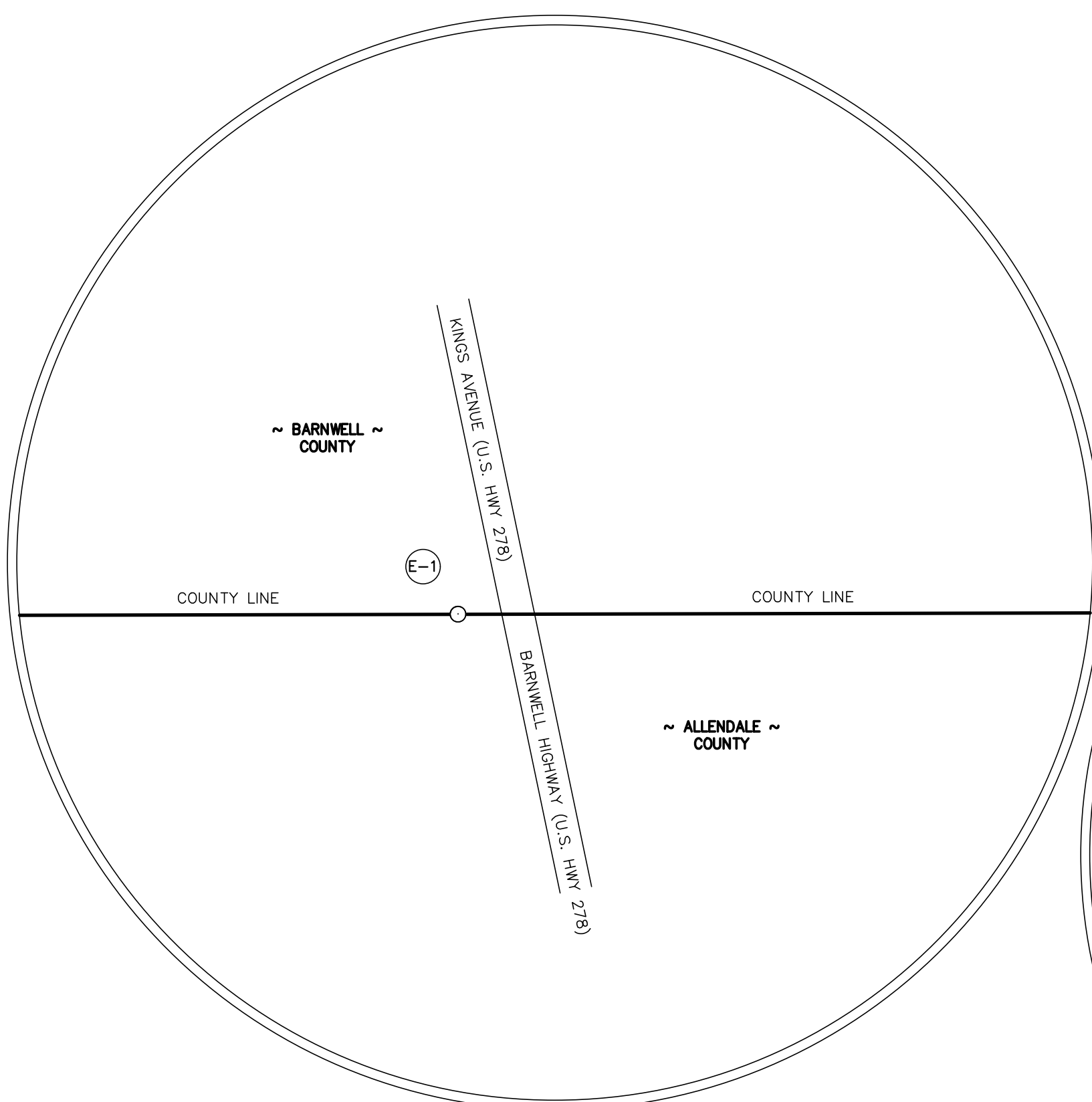
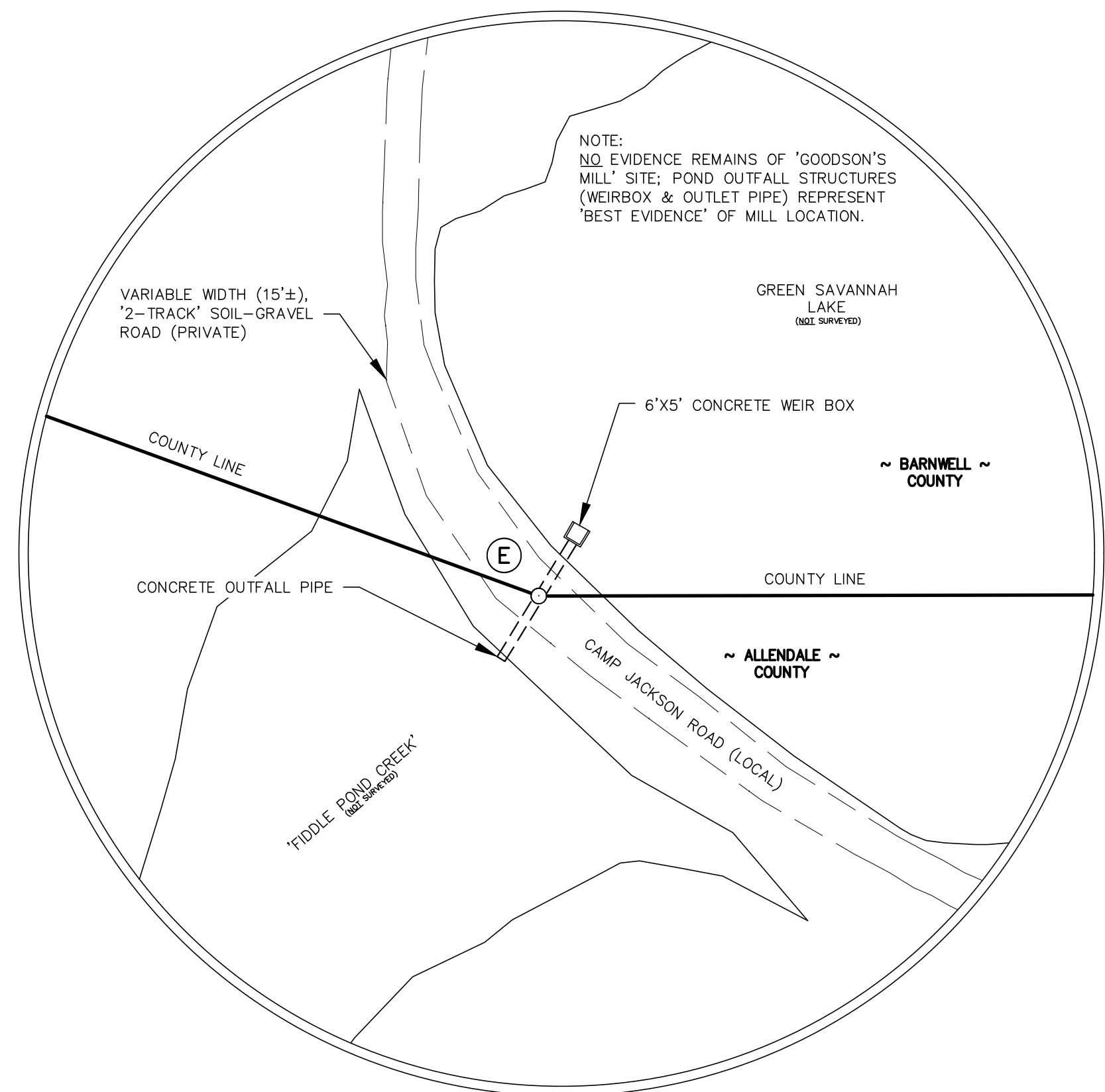
Date of Survey: 4/19/2023

Drawn: KWM
 Design: KAW
 Checked: KAW
 Approved: KAW
 CAD File:
 F.B. & Pg. N/A
 P.B. & Pg. N/A
 Pl.Board Appl.# N/A

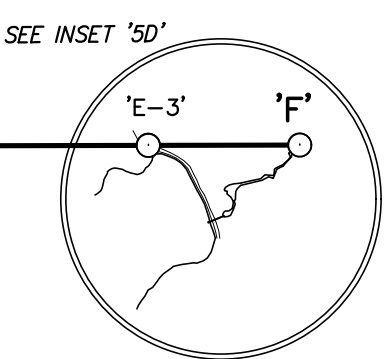
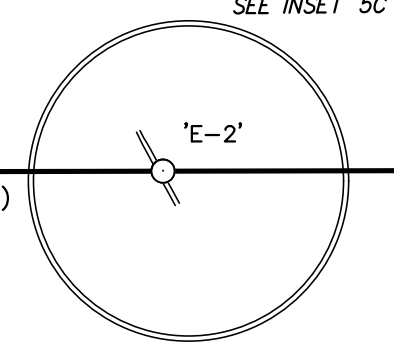
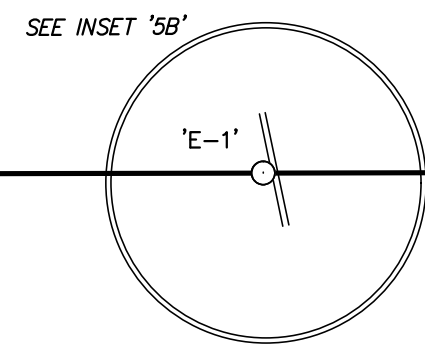
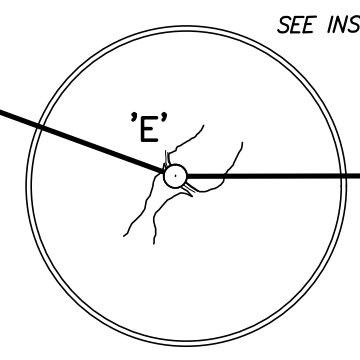
Date	Revision No.

Proj. No.: 20020-001
 Sheet 4 of 5

GRID NORTH
NAD 83 (2011 ADJUSTMENT)



MATCH LINE ~ See Sheet 4



COUNTY LINE N89° 52' 44"E 8,280.62' ('E' TO 'E-1')

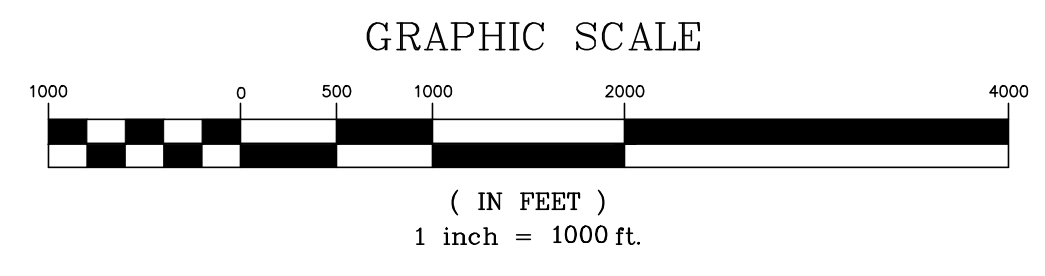
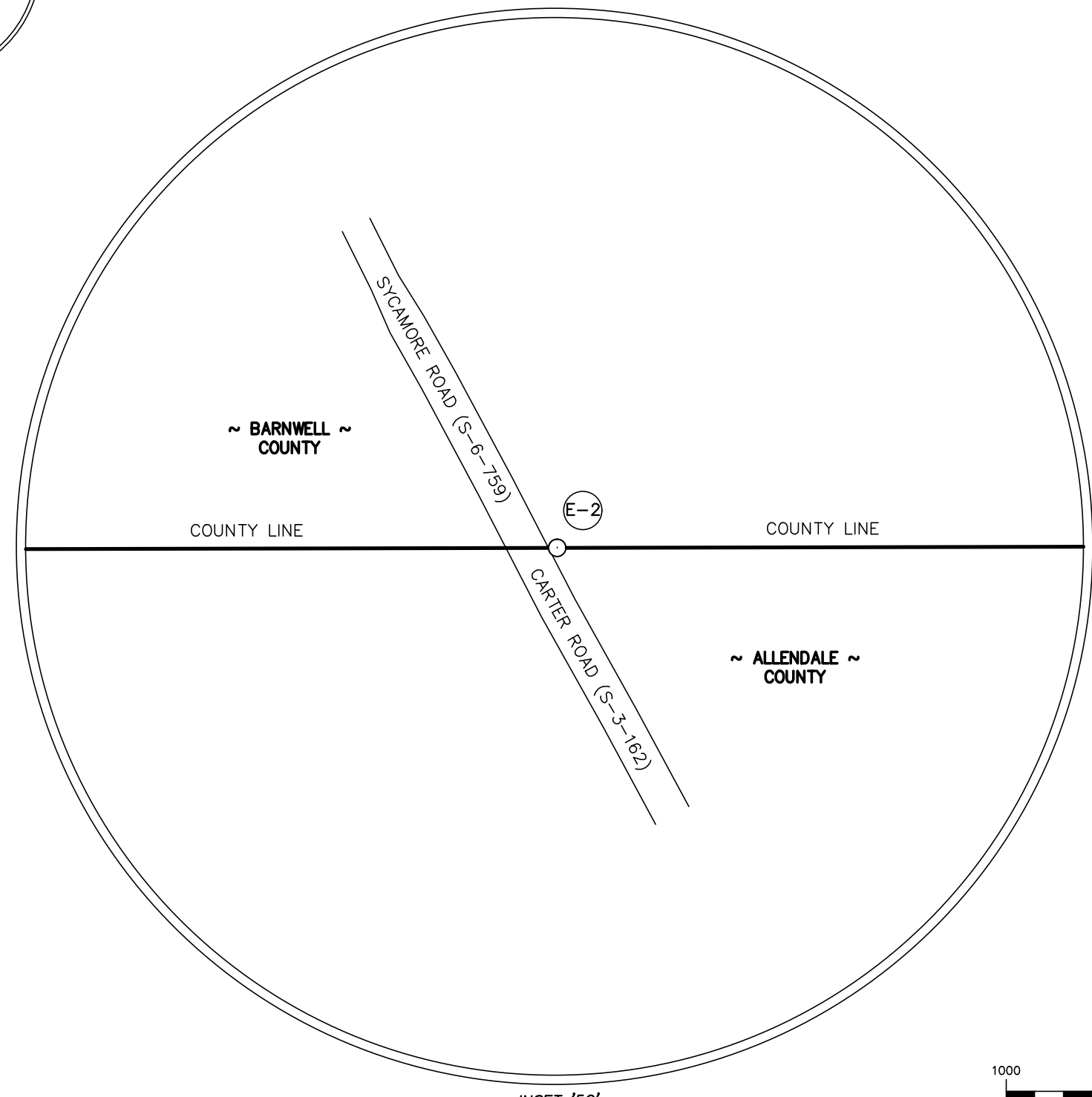
COUNTY LINE N89° 52' 44"E 4,339.83' ('E-1' TO 'E-2')

COUNTY LINE N89° 52' 44"E 11,662.03' ('E-2' TO 'E-3')

~ BARNWELL ~ COUNTY

~ ALLENDALE ~ COUNTY

COUNTY LINE CORNER & MONUMENT DESCRIPTION TABLE			
CORNER/WITNESS	DESCRIPTION	NORTHING	EASTING
E	ALLENDALE-BARNWELL C.L. CORNER MONUMENT	463,969.77	1,888,232.35
F	ALLENDALE-BARNWELL C.L. CORNER MONUMENT	464,022.85	1,913,364.60
E-1	ALLENDALE-BARNWELL C.L. CORNER MONUMENT	463,987.26	1,896,512.94
E-2	ALLENDALE-BARNWELL C.L. CORNER MONUMENT	463,996.55	1,900,912.76
E-3	ALLENDALE-BARNWELL C.L. CORNER MONUMENT	464,021.18	1,912,574.76



I HEREBY STATE THAT TO THE BEST OF MY PROFESSIONAL KNOWLEDGE, INFORMATION, AND BELIEF, THE SURVEY SHOWN HEREON WAS MADE IN ACCORDANCE WITH THE REQUIREMENTS OF THE "STANDARDS OF PRACTICE MANUAL FOR SURVEYING IN SOUTH CAROLINA," AND MEETS OR EXCEEDS THE REQUIREMENTS FOR A CLASS "A" SURVEY AS SPECIFIED THEREIN.

DAVID BRANTLEY
No. 11053
PROFESSIONAL ENGINEER

NOT VALID UNLESS SIGNED IN RED INK

CORNERSTONE SURVEYING & ENGINEERING, INC.
C.O.A.

STAMP

EMBOSSSED SEAL

This is not a valid, true copy of the document unless bearing on embossed seal of the surveyor or engineer.

Copyright 2023, Cornerstone Surveying & Engineering, Inc. All rights reserved. Reproduction or use of this document, in whole or in part, without permission is prohibited.

Print No. _____
Date: ____/____/____

CORNERSTONE
SURVEYING & ENGINEERING, INC.

1240 Bacons Bridge Rd. • Summerville • South Carolina • 29485 • Phone: 843-871-9706

A PLAT OF A PORTION OF THE
ALLENDALE-BARNWELL COUNTY LINE

COMMENCING AT A POINT ON THE CENTER OF THE END OF 'STEEL LANDING' OPPOSITE A POINT ON THE 'GEORGIA-SOUTH CAROLINA STATE LINE IN THE SAVANNAH RIVER' THEN RUNNING NORTHEASTERLY TO THE INTERSECTION OF 'TENNESSEE-BILL ROAD' (SRS) - WITH 'THE ROAD TO MILLET' (SRS); THEN RUNNING SOUTHEASTERLY TO 'STINSON BRIDGE' ON 'WASHINGTON BAUDER' (S-3-65) / 'ROAD TO MILLET' (SRS); OF THE INTERSECTION OF 'FURSE' ROAD (S-3-17); THEN CONTINUING SOUTHEASTERLY TO THE 'LAND BRIDGE' CROSSING OVER 'FIDDLE POND CREEK' AT THE NORTHWEST END OF 'CAMP JACKSON ROAD' (A LOCAL ROAD); THEN TO A 5"x5" WOOD POST ON 'WELLS BRANCH' LYING EAST-NORTHEAST OF 'SPIGENERS' POND'

Date of Survey:
4/19/2023

□ Drawn: KWM
□ Design: KAW
□ Checked: KAW
□ Approved: KAW

CAD File:
F.B. & Pg. N/A
P.B. & Pg. N/A
Pl. Board Appl. # N/A

Date	Revision No.

Proj. No.: 20020-001
Sheet 5 of 5