

MAP
OF
PROPOSED NEW COUNTY
OUT OF PORTIONS OF
BARNWELL & HAMPTON Cos.

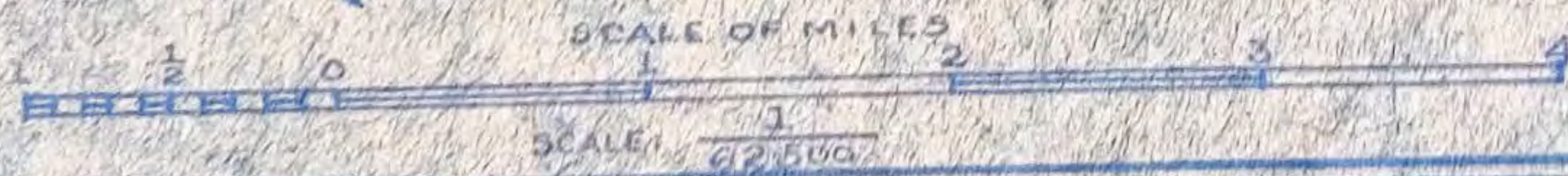
CONTAINING $413\frac{85}{100}$ SQ. MI.

FROM BARNWELL CO $343\frac{75}{100}$ SQ. MI.

FROM HAMPTON CO $70\frac{10}{100}$ SQ. MI.

SURVEYED DEC. 1918

BY $\left\{ \begin{array}{l} \text{Theod. C. Hamby C.E.} \\ \text{C. M. Wannamaker C.E.} \end{array} \right.$



Cohens Bluff

BARNWELL
HAMPTON

WEST 3306 FT Stake

5.55° W.

10104 FT.

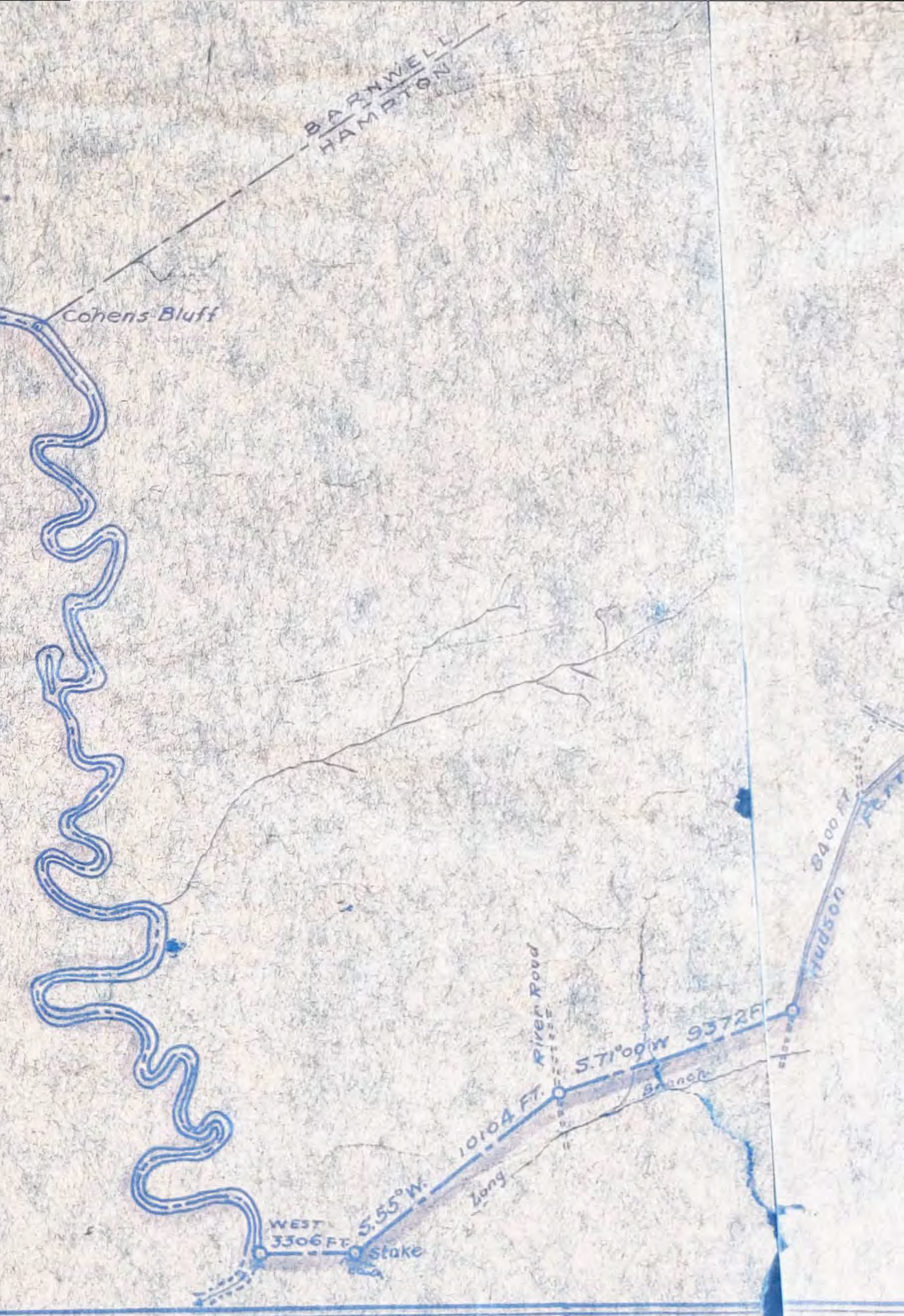
River Road

Long

5.71° 00' W 9372 FT

Branch

8400 FT Hudson



**MAP
OF
PROPOSED NEW COUNTY
OUT OF PORTIONS OF
BARNWELL & HAMPTON Cos.**

CONTAINING 413⁸⁵/₁₀₀ SQ. MI.

FROM BARNWELL CO 343²⁶/₁₀₀ SQ. MI.
FROM HAMPTON CO 70¹⁰/₁₀₀ SQ. MI.

SURVEYED DEC. 1918

BY *Theod. C. Hamby* CE
Ch. Wannamaker CE

SCALE OF MILES

SCALE 1" = 2.500'



8 MILES



Robbins Tr. 34,140 FT N 43° 00' E

Daniels 28,150 FT S 73° 00' E

Slingshot Bridge 29,000 FT S 70° 00' E

Godsons Mill 25,263 FT East

54,014 FT

Steel Ldg.

C. K. W. C.

MILLETT

R. R.

Zone Three River

Well Branch

BARNWELL CO LINE RIVER

SOUTHERN RAILROAD

BELDOC

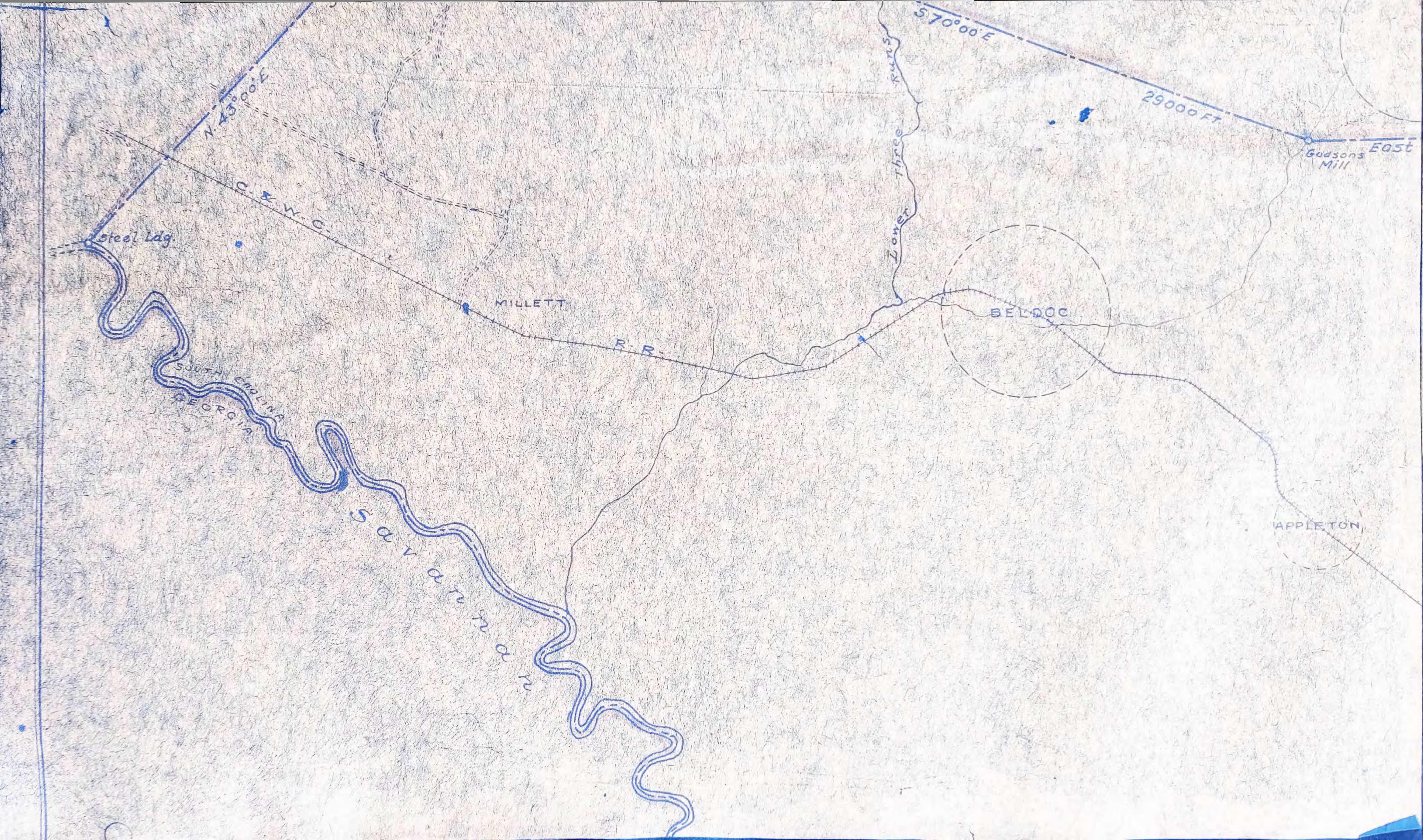
KLINE

APPLETON

ALLENDALE

SYCAMORE

ULMERS



N 43° 00' E

S 70° 00' E

29000 FT

Godsons Mill E 05° 00' E

Steel Ldg

C. & W. C.

MILLETT

R. R.

Zoner Three Run

BELDOC

SOUTH CAROLINA
GEORGIA

Savannah

APPLETON



BARTWELL COURT HOUSE

0 MILES

ROBBINS TR

OAK KEN

BARTWELL ROAD

3 1/4 AFT

3 000 FT

20 000 FT

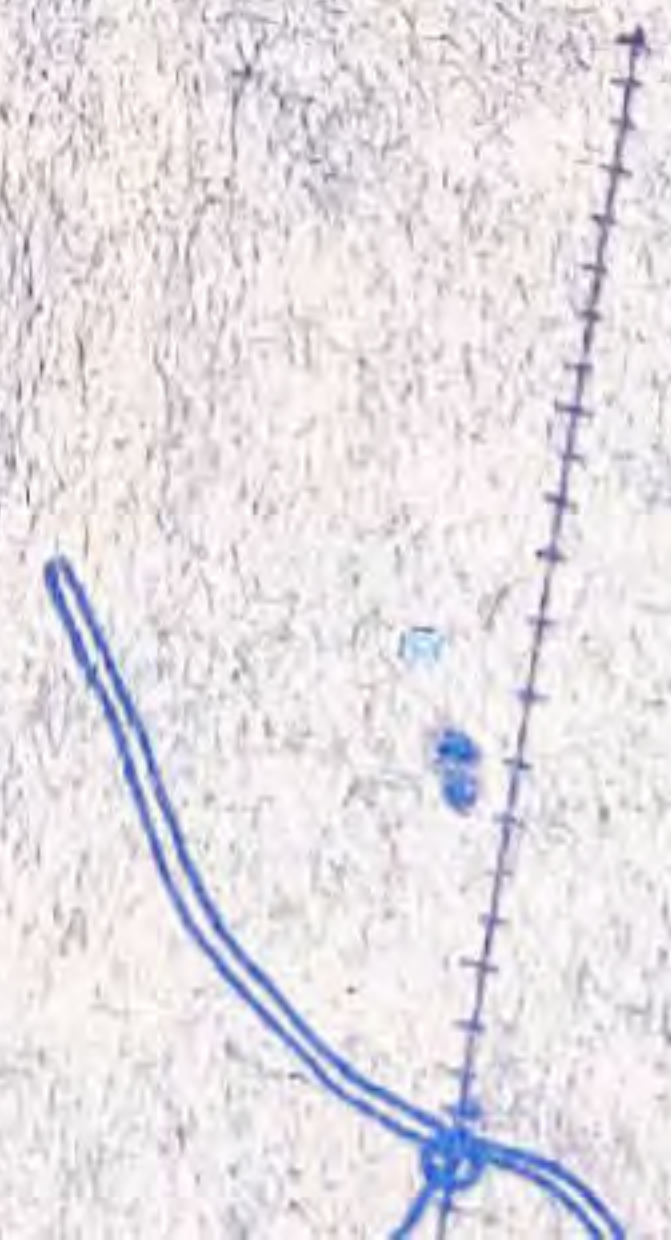
10 000 FT

10 000 FT

ROWELL COUNTY
COURT-HOUSE



True North



True North

KLINE

well Branch

25,263 FT.

ULMERS

Saakehatchie

BAMBERG CO LINE
BARNWELL CO LINE

SOUTHERN



R.R.

KLINE

well Branch

25,263 FT

ULMERS

Satnetatchie River
BAMBERG CO LINE
BARNWELL CO LINE

SYCAMORE

ALLENDALE

54,014 FT

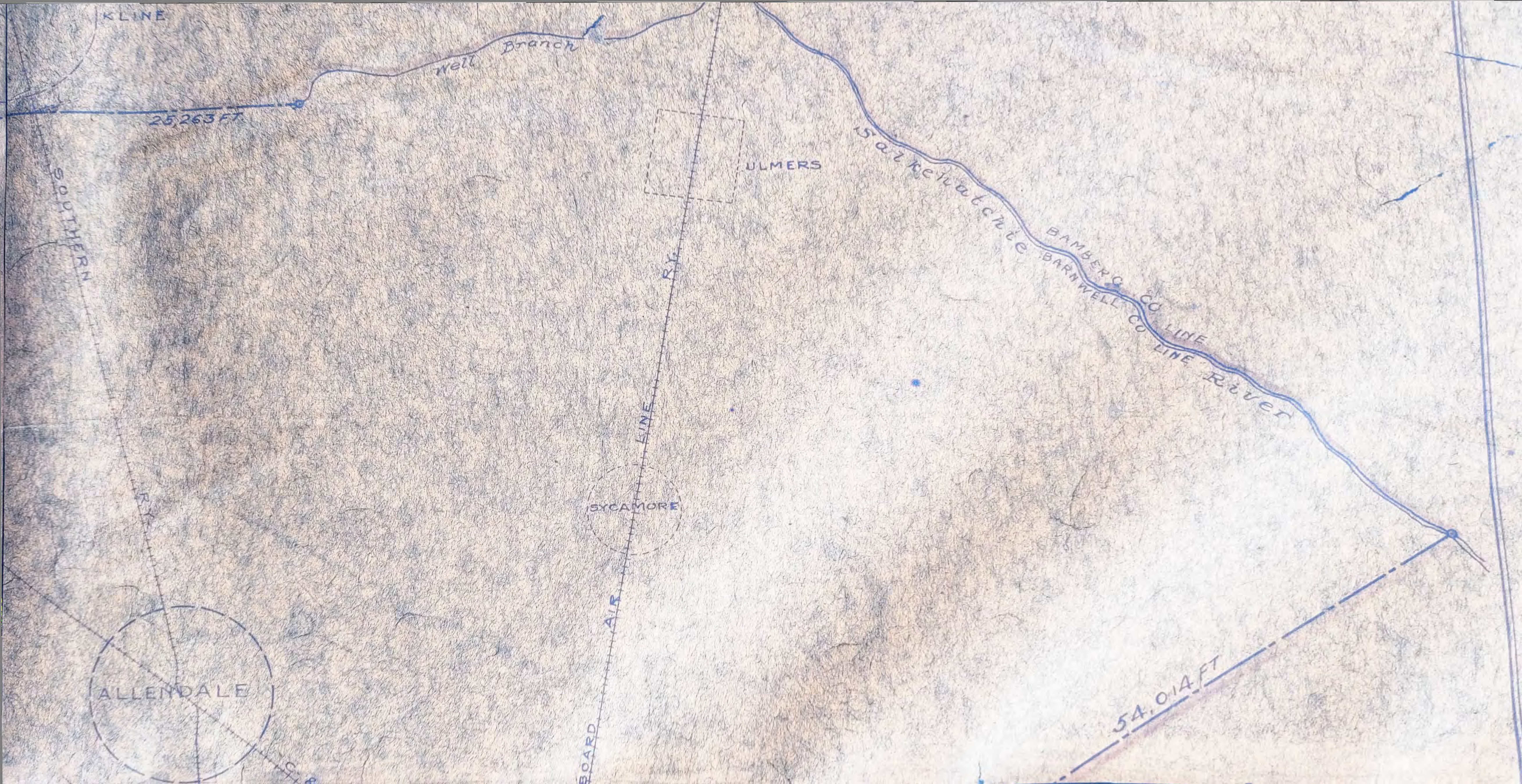
SOUTHERN

LINE

R.F.

AIR

BOARD





Savannah
River

SOUTH CAROLINA
GEORGIA

STATE LINE
STATE LINE

BARNWELL
HAMPTON

Cohen's Bluff

MAP

O

P

C

A

LINE
LINE

0
C
C

River

SOUTH CAROLINA
GEO. CO. VA.

STATE LINE
STATE LINE

BARNWELL
HAMPTON

CO.
CO.

O

R

G

A

I

A

A

L



FAIRFAX

BARNWELL
HAMPTON CO.

5.58°00' W

Stake

WEST
2000
Stake

Beach Branch

Coosawatchie River

8 mi and 200 Ft.

HAMPTON COUNTY
COURT-HOUSE

LINE
LINE

SOUTHERN
RY

3.05°00' S

N. 0° 58' E

12667 FT.

3.05°00' S

N. 0° 58' E



WEST 2000 Stake

Beach Branch

Cousawatchie River

8 MI and 200 FT

● HAMPTON COUNTY COURT-HOUSE

SOUTHERN

RK

Stake

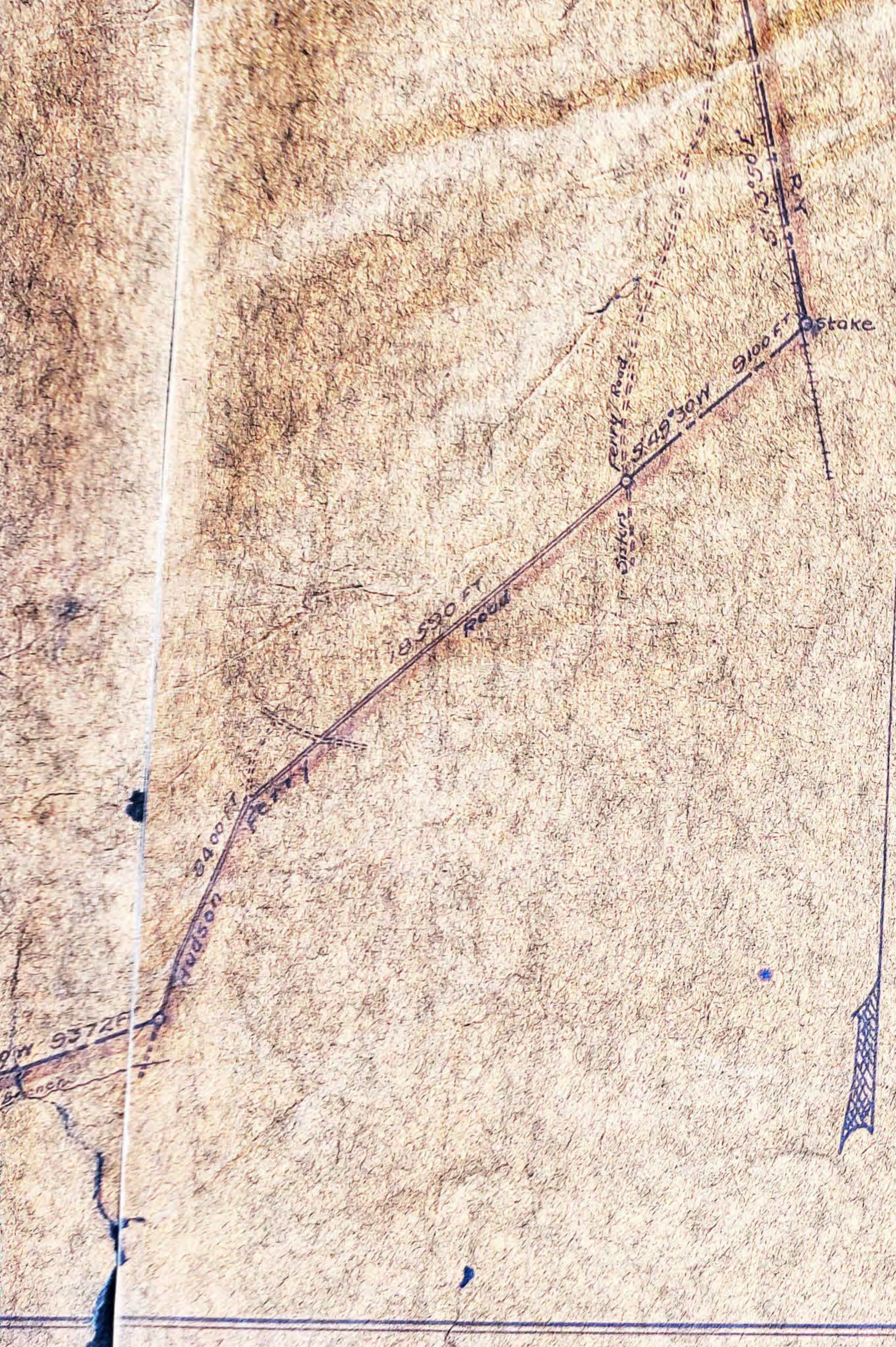
Ferry Road

9°49'30"W

9100 FT

18,530 FT Road

2400 FT



MAP
OF
PROPOSED NEW COUNTY
OUT OF PORTIONS OF
BARNWELL & HAMPTON Cos.

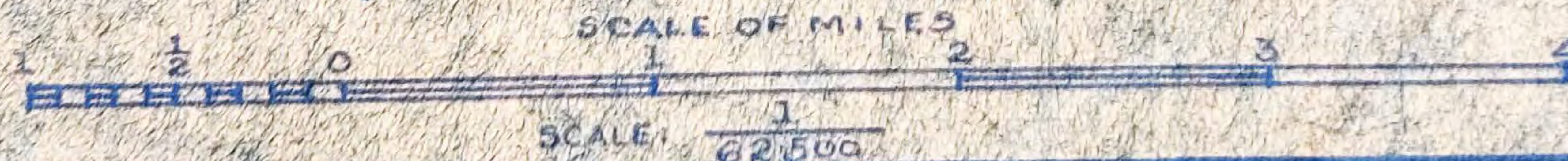
CONTAINING $413\frac{85}{100}$ SQ. MI.

FROM BARNWELL CO $343\frac{75}{100}$ SQ. MI.

FROM HAMPTON CO $70\frac{10}{100}$ SQ. MI.

SURVEYED DEC. 1918

BY { *Theod C. Hamby* C.E.
CM Wannamaker C.E.





WEST
3306 FT.
stake

S. 55° W.
10104 FT.
Long

RIVEN ROAD

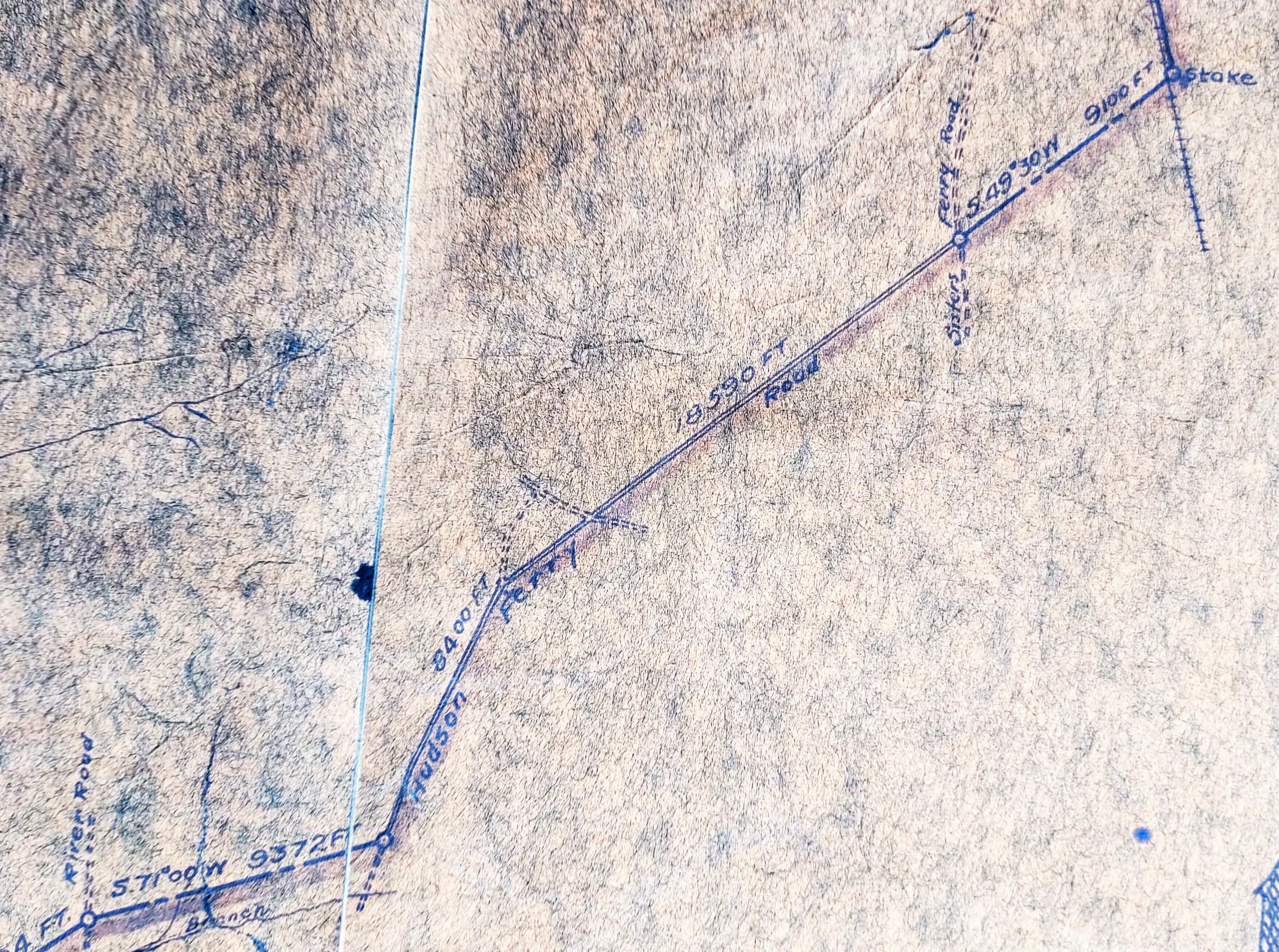
5.71° 00' W 9372 FT.

Branch

Hudson Ferry

8400 FT

8590 FT
Road





Stake

Beach Branch

Cousawatchie River

8 mi and 200 ft

SOUTHERN RY

7050 FT

19335 FT

9100 FT Stake

Cerry Road

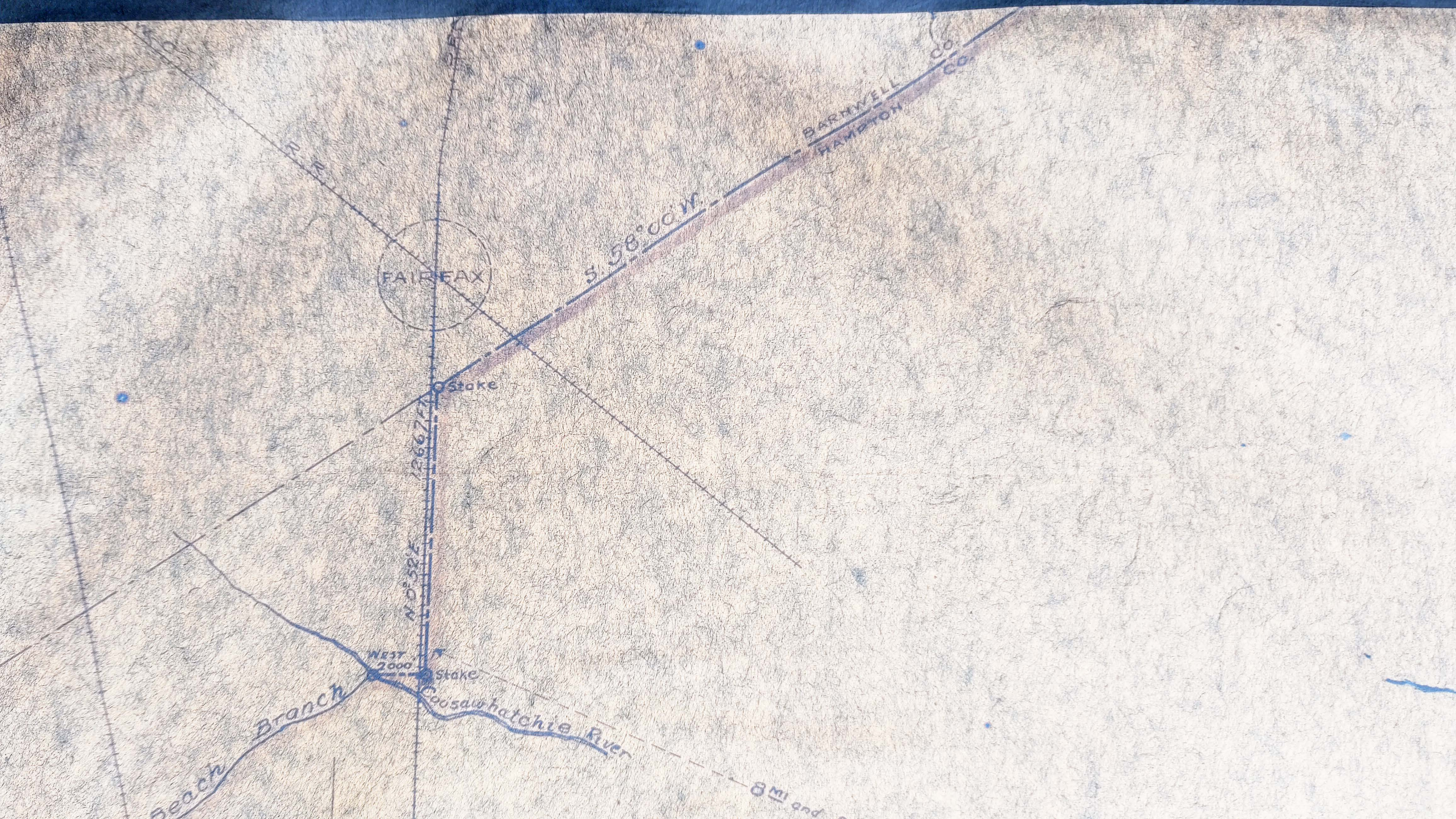
S 49° 30' W

WEST 2000

27 1/2

000





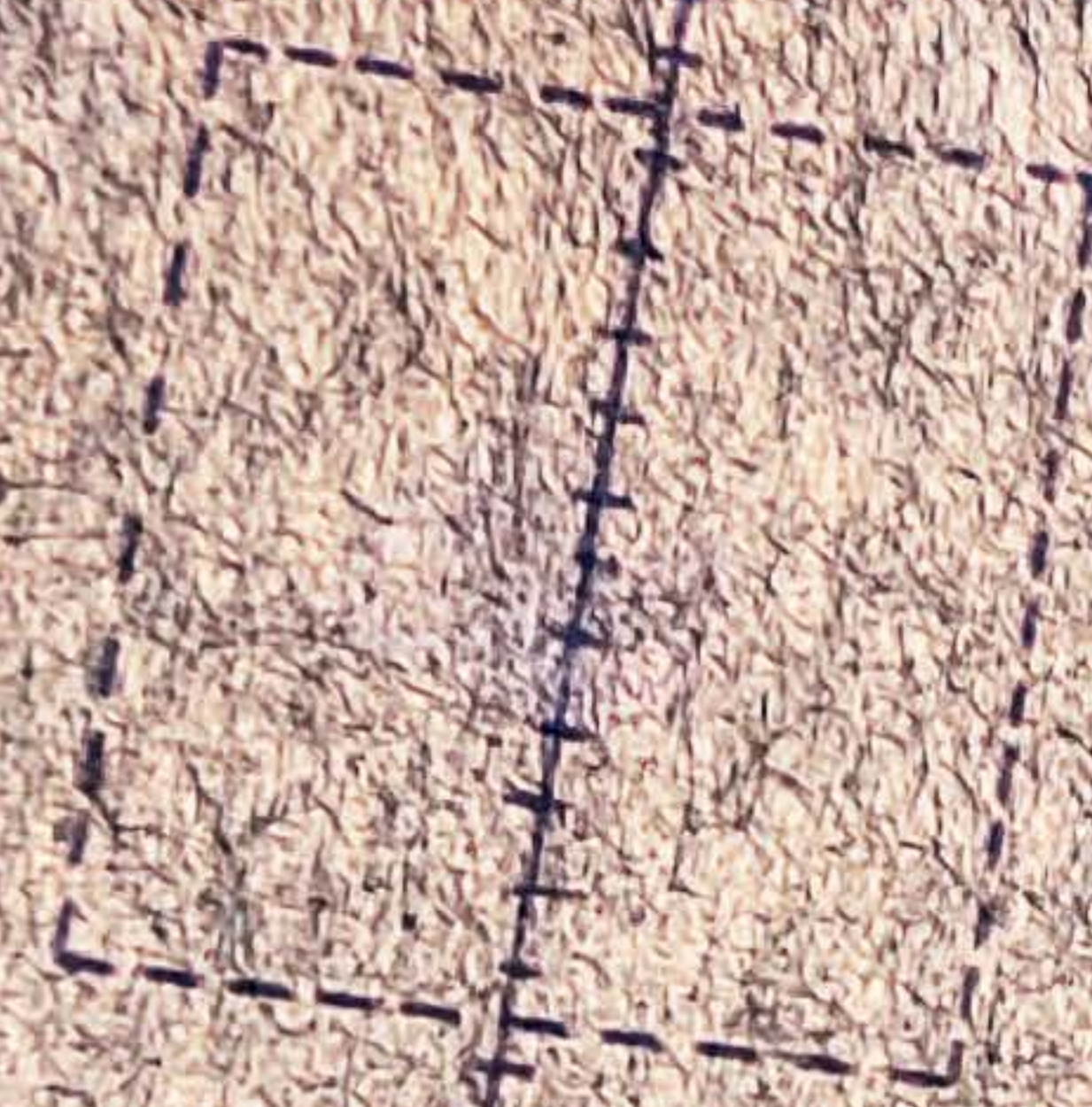
LINE
LINE
River

54.014 FT

RE



well
branch



ULMERS

Sa z ke tu a t c h e

BAMBERG CO LINE
BARNWELL CO LINE

CO LINE
CO LINE
River

R.Y.
LINE

SYCAMORE



KLINE

sons East
Mill

25,263 FT.

Well Branch

ULMERS

SOUTHERN

RY.

Stinson
Bridge

S 70° 00' E

29,000 FT

Godsons
Mill East

25,263 FT.

KLINE

SOUTHERN

BELDOC

Lower
Three
River





S 73° 00' E

28,150 FT

Stinson Bridge

S 70° 00' E

Lower Three Rivers

29,000 FT

Godsons Mill

E 05° 00' E

25,000 FT



Robbins

ROAD

3,140 FT

N 43° 00' E

S 73° 00' E

28,150 FT

stinson Bridge

S 70° 00' E

Rivers

Three

river

8 MIL

ROBBINS TU OAK X 3 N

S 73° 00' E

28,150 FT.

Stinson Bridge

S 70°

Rutledge River

Three

Lower

31,140 FT.

N 43° 00' E

C & N C

steel Ldg.

MILLETT

R-R

