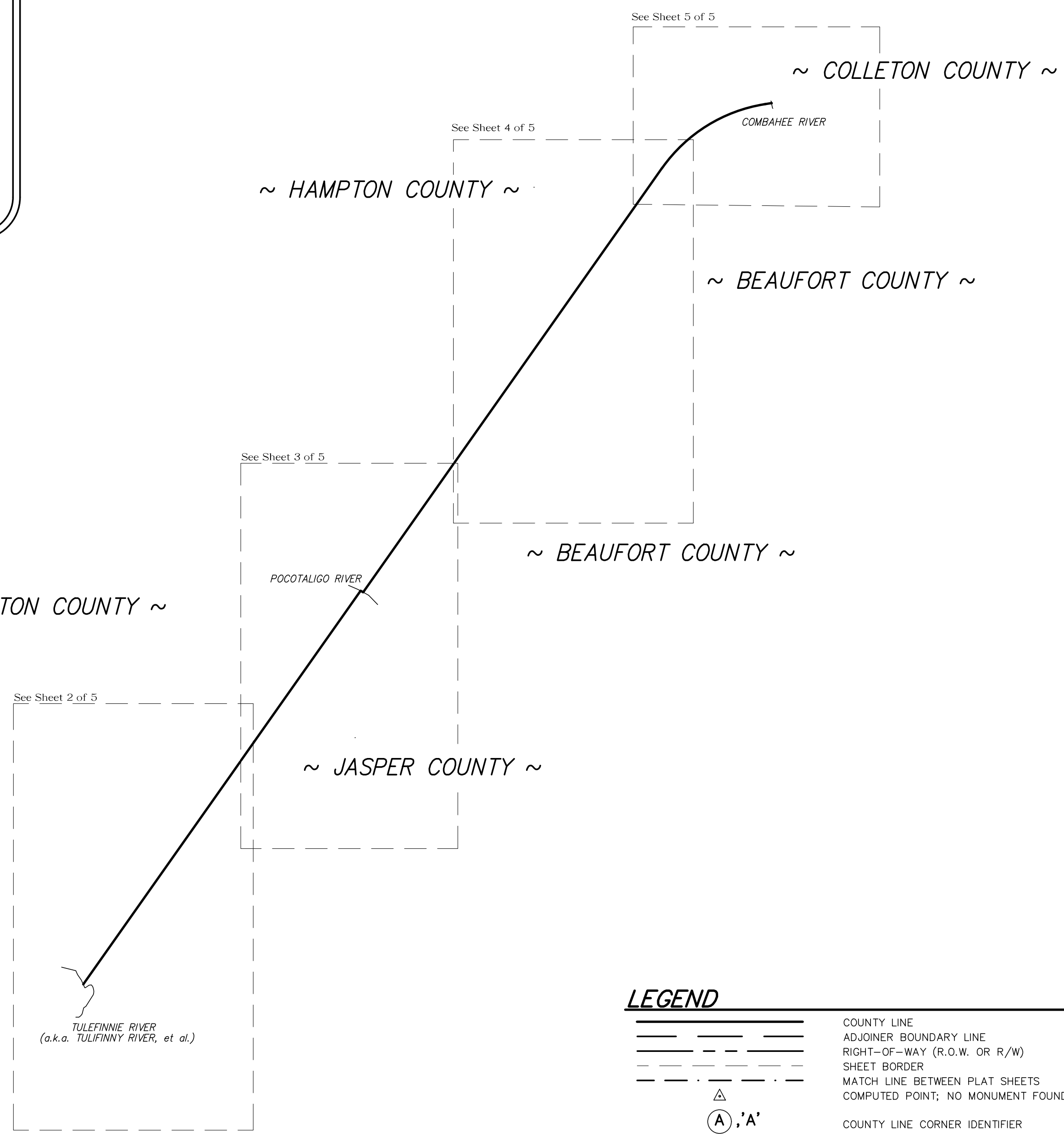
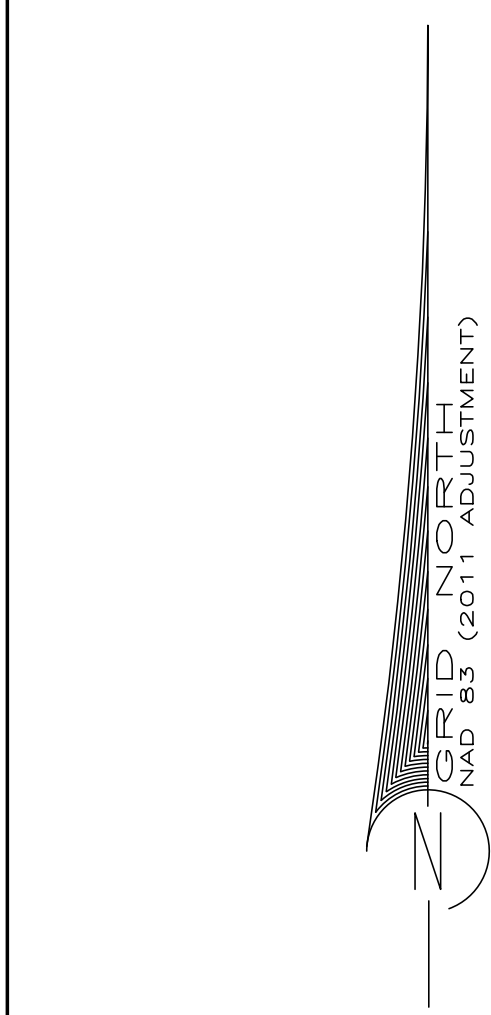
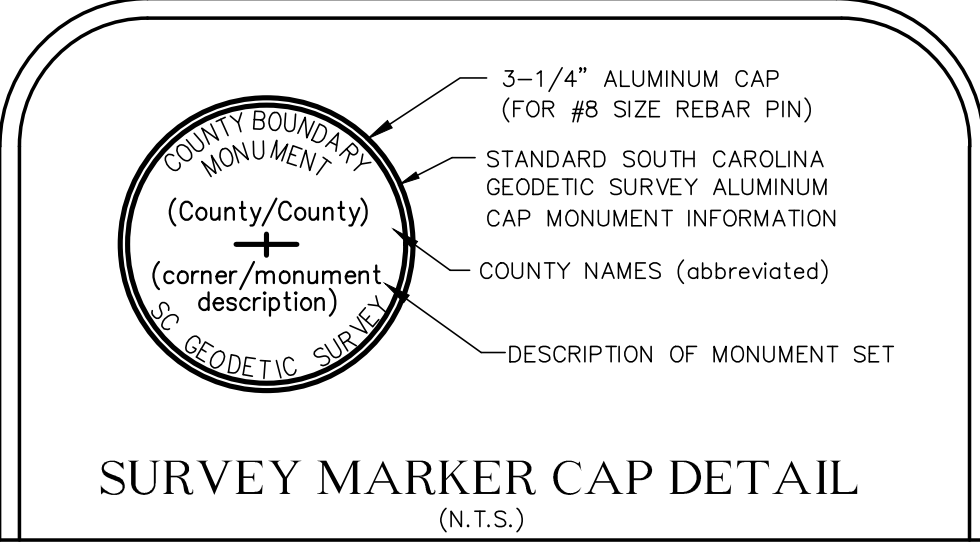


LOCATION MAP
(NOT TO SCALE)

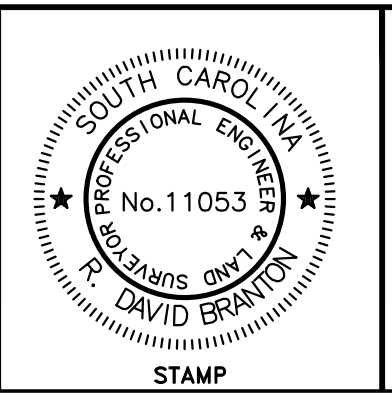


LEGEND

- COUNTY LINE
- ADJOINER BOUNDARY LINE
- RIGHT-OF-WAY (R.O.W. OR R/W)
- SHEET BORDER
- MATCH LINE BETWEEN PLAT SHEETS
- △ COMPUTED POINT; NO MONUMENT FOUND &/or SET
- Ⓐ, A' COUNTY LINE CORNER IDENTIFIER
- MONUMENT SET - #8 REBAR w/ ALUMINUM CAP (SEE "SURVEY MARKER CAP" DETAIL)
- M.N.&W.S. MAG NAIL & WASHER SET - "COUNTY BOUNDARY MONUMENT"
- R.B.C.S. #8 REBAR w/3-1/4" "COUNTY BOUNDARY MONUMENT - S.C.G.S." ALUMINUM CAP SET
- RBR or R.B. IRON REINFORCING BAR (REBAR)
- R.O.D. REGISTER OF DEEDS
- BK./PG. BOOK/PAGE
- D.B./PG. DEED BOOK/PAGE
- P.B./PG. PLAT BOOK/PAGE
- P.C./SL. PLAT CABINET/SLIDE
- C/L or C. CENTERLINE
- C.P. COMPUTED POINT
- S.C.G.S. SOUTH CAROLINA GEODETIC SURVEY
- RR or R.R. RAILROAD
- SCDOT SOUTH CAROLINA DEPARTMENT OF TRANSPORTATION
- M.L. MATCHLINE
- HWY. HIGHWAY
- ST. STREET
- E/S EACH SIDE
- REF. REFERENCE
- P.C. POINT OF CURVATURE
- P.T. POINT OF TANGENCY
- R.P. REFERENCE POINT
- PVT. PRIVATE
- INT. INTERSECTION



I HEREBY STATE THAT TO THE BEST OF MY PROFESSIONAL KNOWLEDGE, INFORMATION, AND BELIEF, THE SURVEY SHOWN HEREON WAS MADE IN ACCORDANCE WITH THE REQUIREMENTS OF THE "STANDARDS OF PRACTICE MANUAL FOR SURVEYING IN SOUTH CAROLINA", AND MEETS OR EXCEEDS THE REQUIREMENTS FOR A CLASS "A" SURVEY AS SPECIFIED THEREIN.



NOT VALID UNLESS SIGNED IN RED INK

David Bratton

4-24-2023

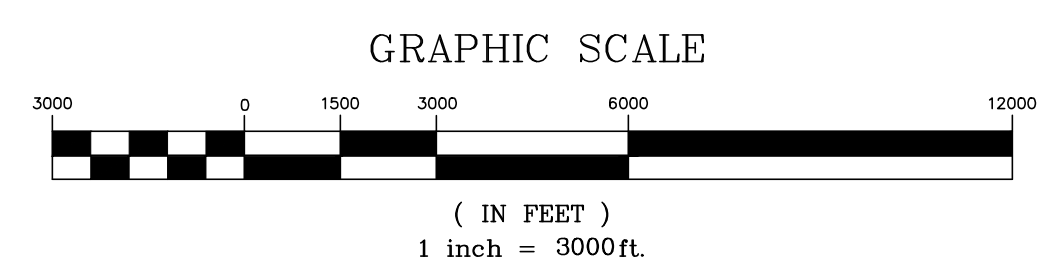
EMBOSSED SEAL

REFERENCES

1. FOR SHEETS 2 THROUGH 5 USE THE FOLLOWING CSX RAILROAD "VAL" MAPS WHEN REFERENCING THE CSX RAIL ROAD RIGHT-OF-WAY AND CENTERLINE.
 - a. CSX RAIL ROAD RIGHT-OF-WAY AND TRACK MAP; ATLANTIC COAST LINE R.R. CO. MAIN LINE-CHARLESTON TO GEORGIA STATE LINE, V.7 S.C. pg. 12/V00292 THRU 16/V00296, DATED JUNE 30, 1917
 - b. CSX RAIL ROAD RIGHT-OF-WAY AND TRACK MAP; CHARLESTON & WESTERN CAROLINA RAILWAY CO., V.3 pg. 21/V07498, DATED JUNE 30, 1915
 - c. CSX RAIL ROAD STATION MAP; CHARLESTON & WESTERN CAROLINA RAILWAY CO., V.3 pg. S-21-22/V07499, DATED JUNE 30, 1915
 - d. CSX RAIL ROAD RIGHT-OF-WAY AND TRACK MAP; CHARLESTON & WESTERN CAROLINA RAILWAY CO., V3 pg. 22/V07519, DATED JUNE 30, 1915
 - e. CSX RAIL ROAD STATION MAP; ATLANTIC COAST LINE R.R. CO. MAIN LINE-CHARLESTON TO GEORGIA STATE LINE, V.7 S.C. pg. S-13/V28976, DATED JUNE 30, 1917
2. SOUTH CAROLINA LEGISLATIVE ACTS ADDRESSING, DEFINING, AND/OR CREATING THE COUNTY LINES AS MAPPED HEREON.

NOTES

1. THIS IS NOT A VALID, TRUE COPY OF THIS DOCUMENT UNLESS IT BEARS THE ORIGINAL SIGNATURE, SIGNATURE DATE, AND THE RAISED, EMBOSSED SEAL OF THE REGISTERED PROFESSIONAL LAND SURVEYOR NOTED HEREON.
2. THE PURPOSE OF THIS PLAT IS ONLY TO MAP THE SECTION OF THE BEAUFORT-HAMPTON-JASPER COUNTY LINE RUNNING FROM THE INTERSECTION OF THE TULEFINNY RIVER AND THE WESTORA CSX RAILROAD RIGHT-OF-WAY TO THE INTERSECTION OF THE COMBAHEE RIVER AND CENTER LINE OF THE CSX RAILROAD. IT IS NOT INTENDED NOR SHOULD BE CONSTRUED TO BE A BOUNDARY SURVEY OR BOUNDARY PLAT OF ANY OF THE PROPERTY PARCELS ADJACENT TO OR NEAR THE AFOREMENTIONED COUNTY LINE. THE BEAUFORT-HAMPTON-JASPER COUNTY LINE AND BOUNDARY LINES OF THE ADJOINING PROPERTIES MAY BE CONGRUENT IF AND ONLY IF SO SPECIFIED BY THE SOUTH CAROLINA LEGISLATIVE ACT(S) THAT ESTABLISH AND DESCRIBE OR DEFINE THE COUNTY LINE AS IT IS BEING PLATTED HEREON. HOWEVER, IN NO WAY IS THIS SURVEY OR PLAT OF THIS PORTION OF THE BEAUFORT-HAMPTON-JASPER COUNTY LINE GIVING WARRANTY TO THE TITLE PROPERTY BOUNDARIES OF THE ADJACENT PARCELS BEING SHOWN OR REFERENCED HEREON.
3. ANY PARCEL INFORMATION REFERENCED ON THIS PLAT IS ONLY THAT USED TO SHOW THE PUBLIC RECORD OWNERSHIP OF THE PROPERTIES ADJOINING OR NEAR THE BEAUFORT-HAMPTON-JASPER COUNTY LINE BEING FOUND ON RECORD, RESPECTIVELY IN THE BEAUFORT, HAMPTON, AND JASPER REGISTER OF DEEDS (R.O.D.) OFFICES AND DOES NOT CONSTITUTE A TITLE SEARCH, TITLE ABSTRACT, OR TITLE OPINION FOR ANY OF THE PROPERTIES NOTED HEREON.
4. THIS PLAT HAS BEEN DONE FOR THE STATE OF SOUTH CAROLINA IN ACCORDANCE WITH THEIR PLANNED USE AND PURPOSE OF THE INFORMATION SHOWN HEREON. ALL OTHER PARTIES ARE SUBSEQUENTLY PUT ON NOTICE AS TO THE LIMITED DEGREE OF RELIANCE UPON THIS PLAT BY THIRD PROPERTIES.
5. NO SURVEYS, EVALUATION OR DELINEATION OF ANY ENVIRONMENTAL ISSUES OR MATTERS SUCH AS HAZARDOUS WASTE CONTAMINATION, SUBSURFACE CHARACTERISTICS (ALONG OR ON EITHER SIDE OF THE COUNTY LINES SHOWN), WETLANDS, ENDANGERED SPECIES, etc. HAVE BEEN DONE FOR THE SUBJECT PROPERTIES, AND THIS SURVEY DOES NOT CERTIFY AS TO THE PRESENCE OR ABSENCE OF SUCH CONDITIONS.
6. FOR ADDITIONAL NOTES SPECIFIC TO THIS SURVEY AND THE INFORMATION FOR THIS PLAT AND THE COUNTY BOUNDARY LINE SHOWN HEREON, SEE SHEETS 2 thru 5 of 5.
7. ALL "NORTHING" (N:) and "EASTING" (E:) COORDINATES SHOWN ON THIS PLAT ARE EXPRESSLY GIVEN AS SOUTH CAROLINA STATE PLANE COORDINATES (SCSPC), ZONE 3900, NAD 83, 2011 ADJUSTMENT (IFT.). ON EACH SHEET, THERE IS A "COUNTY LINE CORNER & MONUMENT DESCRIPTION TABLE" OF THE SOUTH CAROLINA STATE PLANE COORDINATE DATA FOR EACH CORNER ALONG THE BEAUFORT-HAMPTON-JASPER COUNTY LINE RUNNING FROM THE INTERSECTION OF THE TULEFINNY RIVER AND THE WESTORA CSX RAILROAD RIGHT-OF-WAY TO THE INTERSECTION OF THE COMBAHEE RIVER AND CENTER LINE OF THE CSX RAILROAD.
8. THE ORIENTATION OF THIS PLAT IS SCSPC GRID NORTH, NAD 83, 2011 ADJUSTMENT, ZONE 3900. ALL LINES, DIMENSIONS, AND DISTANCES SHOWN HEREON ARE SCALED TO GRID. THE SCSPC COMBINED SCALE FACTOR FOR THIS PLAT IS 1.00005913 AT THE GEODETIC MONUMENT DESIGNATED "7 218" (PID: CK4332) BEING FOUND NEAR THE INTERSECTION OF S.C. HWY. 170 & S.C. HWY. 462 (SCSPC N: 188,981.45 E: 2,023,689.35). THE AVERAGE SCSPC COMBINED SCALE FACTOR FOR THIS PLAT IS 1.00006394.
9. MULTIPLE SPELLINGS FOR THE "TULEFINNY RIVER" WERE FOUND THROUGHOUT THE PUBLIC AND LEGISLATIVE RECORDS REGARDING THE SAME ("TULEFINNIE"; "TULLIFINNY"; "TULFINNY", etc.).



This is not a valid, true copy of this document unless bearing on the raised, embossed seal of the surveyor or engineer.

Copyright © 2023, CORNERSTONE SURVEYING & ENGINEERING, INC. All rights reserved. Reproduction or use of this document, in whole or in part, without permission is prohibited.

Print No. / / /

Date: / /

CORNERSTONE SURVEYING & ENGINEERING, INC.

1240 Bacon's Bridge Rd. • Summerville • South Carolina • 29485 • Phone: 843-871-9706

A PLAT OF A PORTION OF THE

BEAUFORT-HAMPTON-JASPER COUNTY LINE

COMMENCING AT THE INTERSECTION OF THE TULEFINNY RIVER (a.k.a. "TULEFINNY", et al.) WITH THE WESTERN RIGHT-OF-WAY OF THE CSX RAILROAD (a.k.a. "ATLANTIC COAST LINE RAILROAD", et al.) AND THE WESTERN RIGHT-OF-WAY OF THE CSX RAILROAD RIGHT-OF-WAY TO ITS INTERSECTION WITH THE POCOTALIGO RIVER; THEN ALONG THE POCOTALIGO RIVER SOUTHEASTWARD TO THE INTERSECTION OF THE RIVER WITH THE CENTERLINE OF THE CSX RAILROAD; THEN RUNNING EAST-NORTHEAST ALONG THE CENTERLINE OF THE CSX RAILROAD RIGHT-OF-WAY TO THE INTERSECTION WITH THE COMBAHEE RIVER.

Date of Survey: 1-23-2023

□ Drawn: KWM

□ Design: KAW

□ Checked: KAW

□ Approved: KAW

CAD File: F.B. & Pg. N/A

P.B. & Pg. N/A

Pl.Board Appl.# N/A

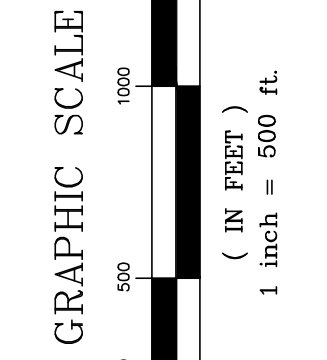
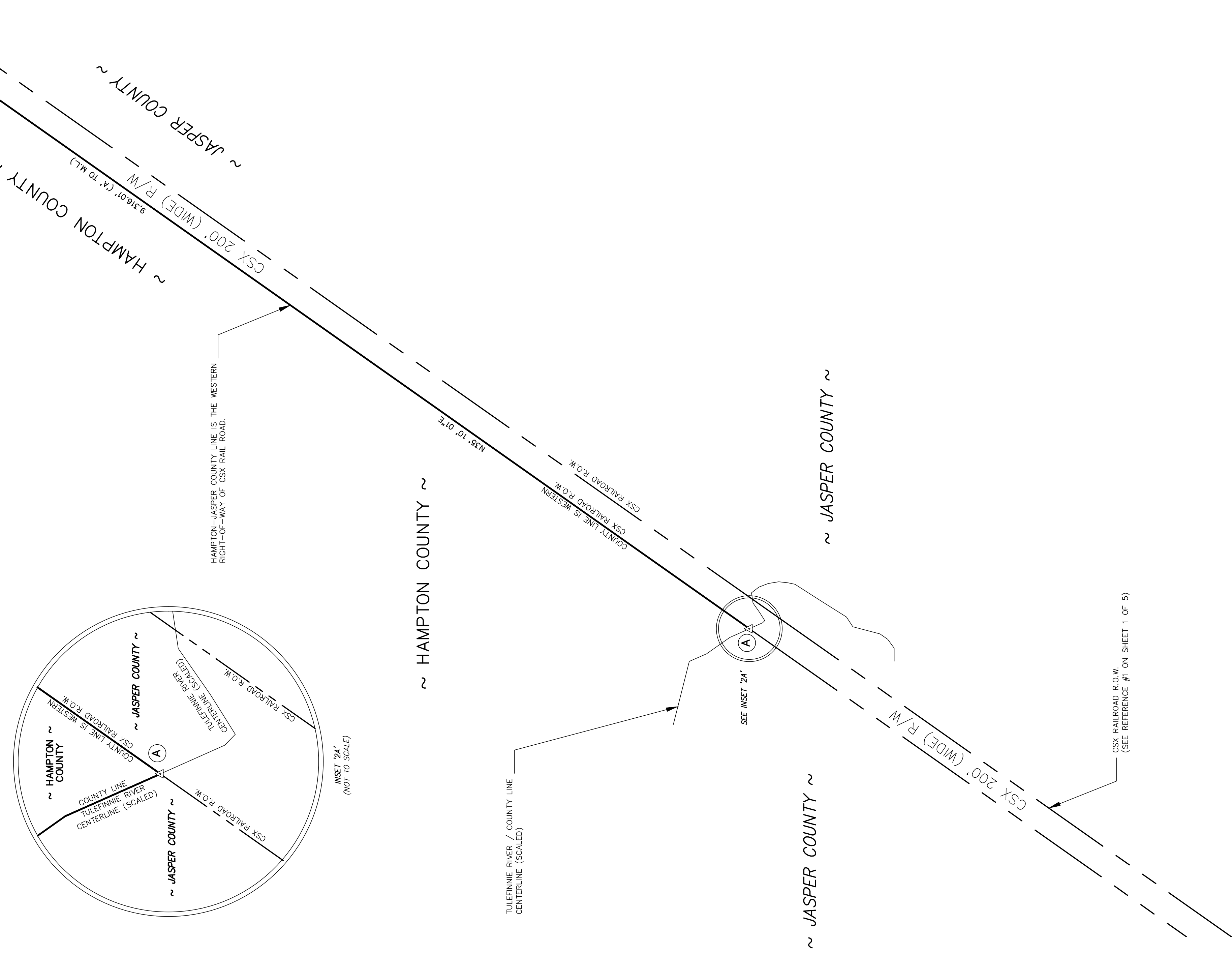
Date	Revision No.

Proj. No.: 15001-002

Sheet 1 of 5

MATCH LINE ~ See Sheet 3

COUNTY LINE CORNER & MONUMENT DESCRIPTION TABLE (SEE NOTE #7)			
CORNER/WITNESS	DESCRIPTION	NORTHING	EASTING
A	COMPUTED POINT	2866908.23	2029994.09



I HEREBY STATE THAT TO THE BEST OF MY PROFESSIONAL KNOWLEDGE, INFORMATION, AND BELIEF, THE SURVEY SHOWN HEREON WAS MADE IN ACCORDANCE WITH THE REQUIREMENTS OF THE "STANDARDS OF PRACTICE MANUAL FOR SURVEYING IN SOUTH CAROLINA", AND MEETS OR EXCEEDS THE REQUIREMENTS FOR A CLASS "A" SURVEY AS SPECIFIED THEREIN.

PROFESSIONAL ENGINEER
No. 11053
R. DAVID EBRATION
STATE OF SOUTH CAROLINA

NOT VALID UNLESS
SIGNED IN RED INK

4-24-2023

C.O.A.

EMBOSSED SEAL

This is not a valid, true copy of this document unless bearing an embossed seal of the surveyor or engineer.
 Copyright 2023, Cornerstone Surveying & Engineering, Inc. All rights reserved. Reproduction or use of this document, in whole or in part, without permission is prohibited.
 Print No. _____
 Date: ____/____/____

CORNERSTONE
 SURVEYING & ENGINEERING, INC.
 1240 Bacons Bridge Rd. • Summerville • South Carolina • 29485 • Phone: 843-871-9706

BEAUFORT-HAMPTON-JASPER COUNTY LINE
 A PLAT OF A PORTION OF THE COMMENCING AT THE INTERSECTION OF THE TULEFINNIE RIVER (a.k.a. "TULIFINNY", et al.) WITH THE WESTERN RIGHT-OF-WAY OF THE CSX RAILROAD (i.e., ATLANTIC COAST LINE RAILROAD, et al.) WESTERN RIGHT-OF-WAY OF THE CSX RAILROAD RIGHT-OF-WAY TO ITS INTERSECTION WITH THE POCOTALIGO RIVER; THEN ALONG THE POCOTALIGO RIVER SOUTHEASTWARD TO THE INTERSECTION OF THE RIVER WITH THE CENTERLINE OF THE CSX RAILROAD THEN RUNNING EAST-NORTHEAST ALONG THE CENTERLINE OF THE CSX RAILROAD RIGHT-OF-WAY TO THE INTERSECTION WITH THE COMBAHEE RIVER.

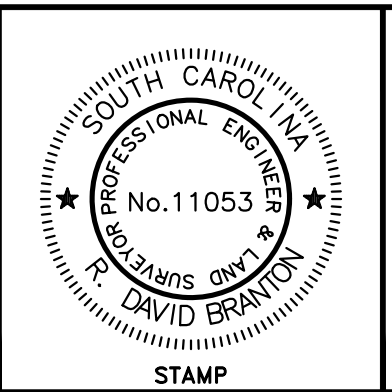
Date of Survey: 1-23-2023

Drawn: KWM
 Design: KAW
 Checked: KAW
 Approved: KAW
 CAD File:
 F.B. & Pg. N/A
 P.B. & Pg. N/A
 Pl. Board Appl. # N/A

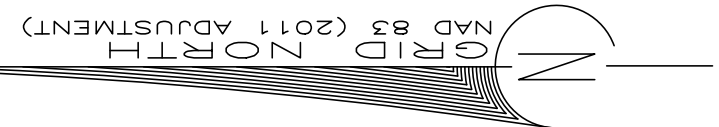
Date	Revision No.

Proj. No.: 15001-002
 Sheet 2 of 5

I HEREBY STATE THAT TO THE BEST OF MY PROFESSIONAL KNOWLEDGE, INFORMATION, AND BELIEF, THE SURVEY SHOWN HEREON WAS MADE IN ACCORDANCE WITH THE REQUIREMENTS OF THE "STANDARDS OF PRACTICE MANUAL FOR SURVEYING IN SOUTH CAROLINA," AND MEETS OR EXCEEDS THE REQUIREMENTS FOR A CLASS "A" SURVEY AS SPECIFIED THEREIN.

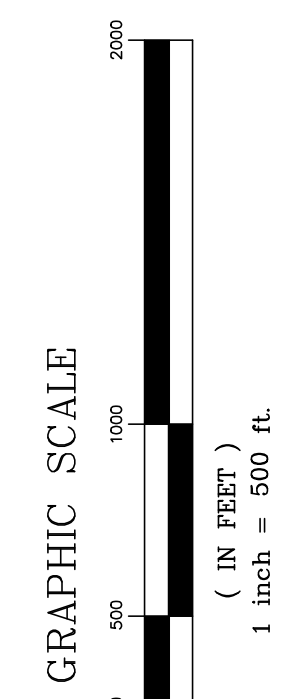
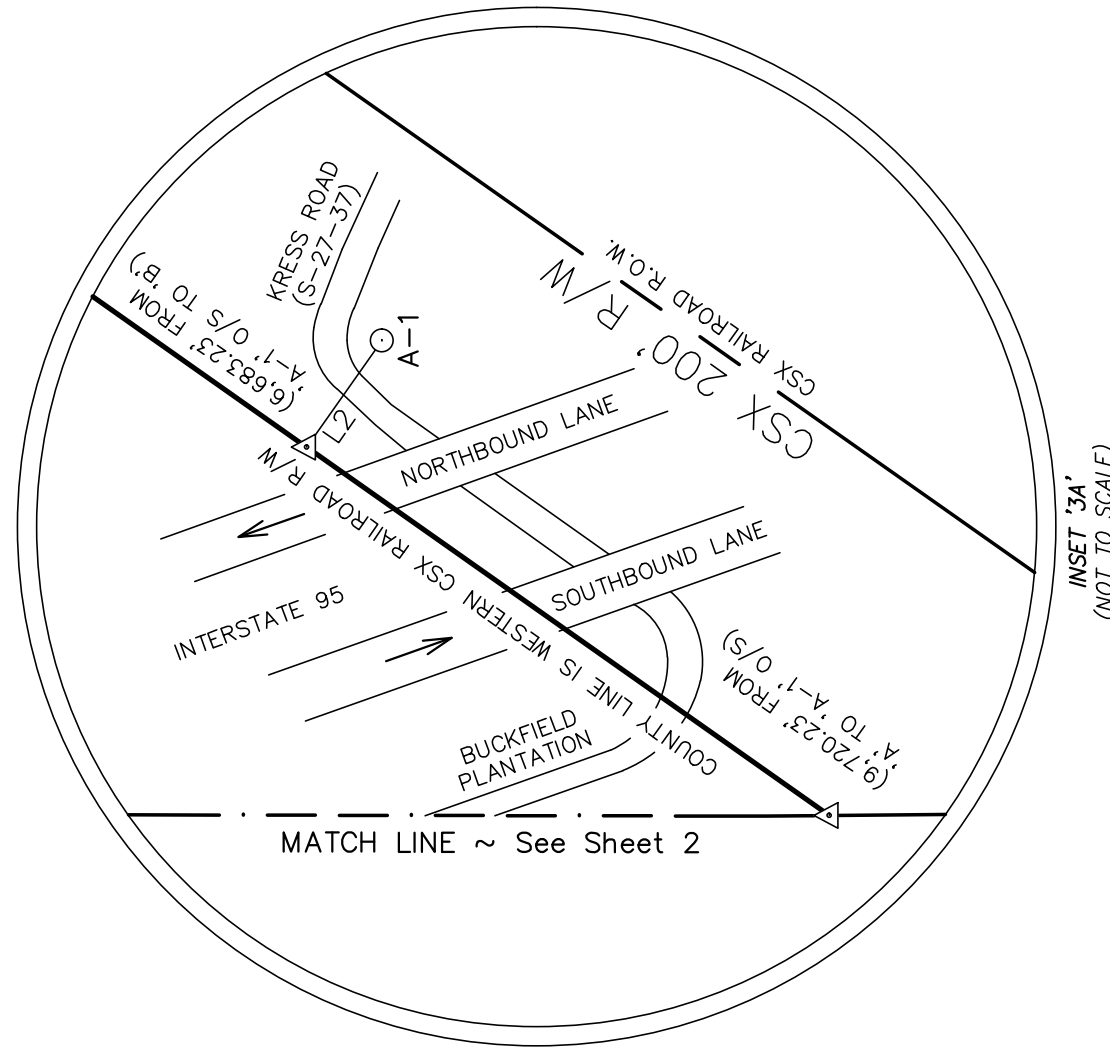
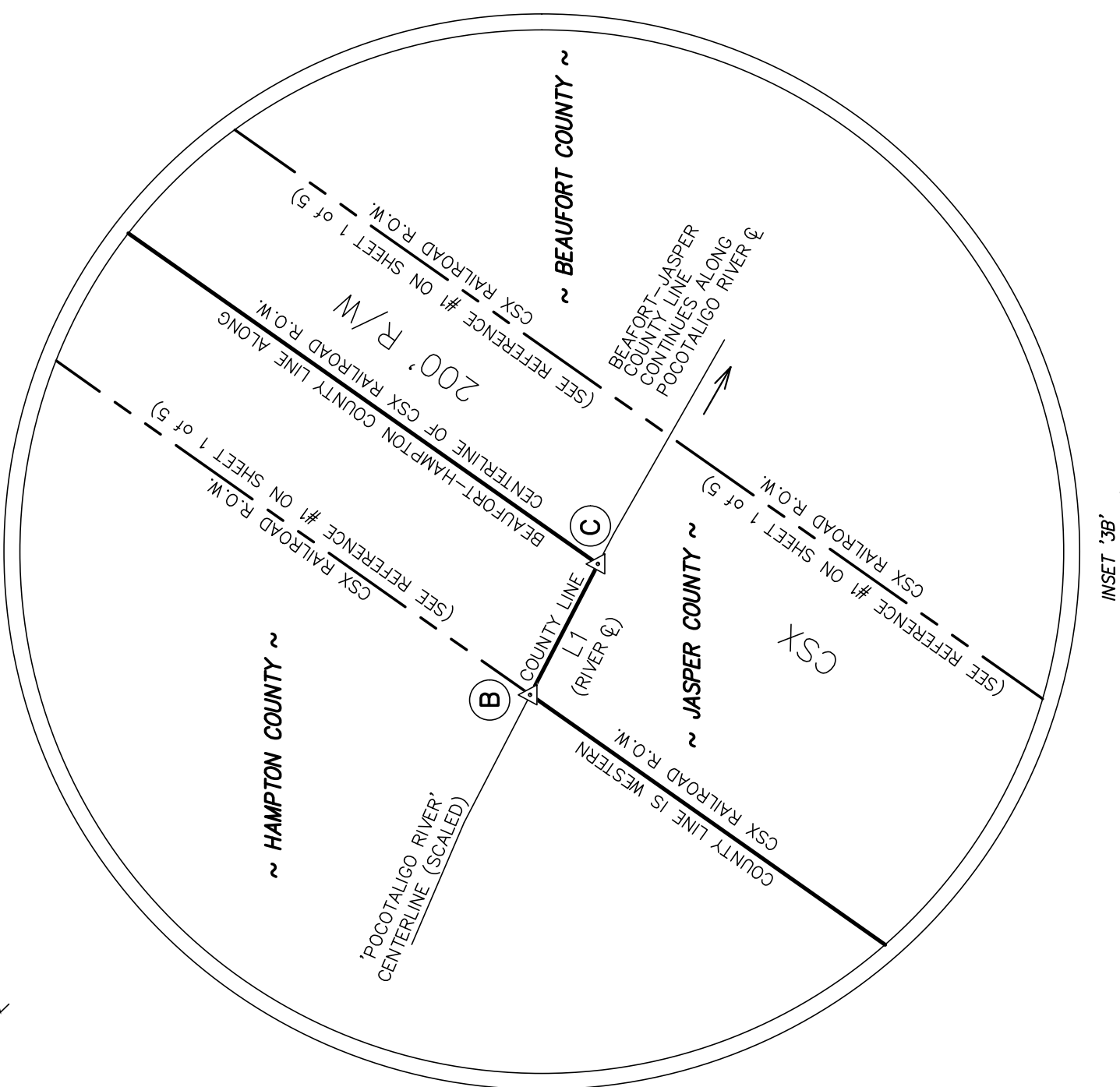
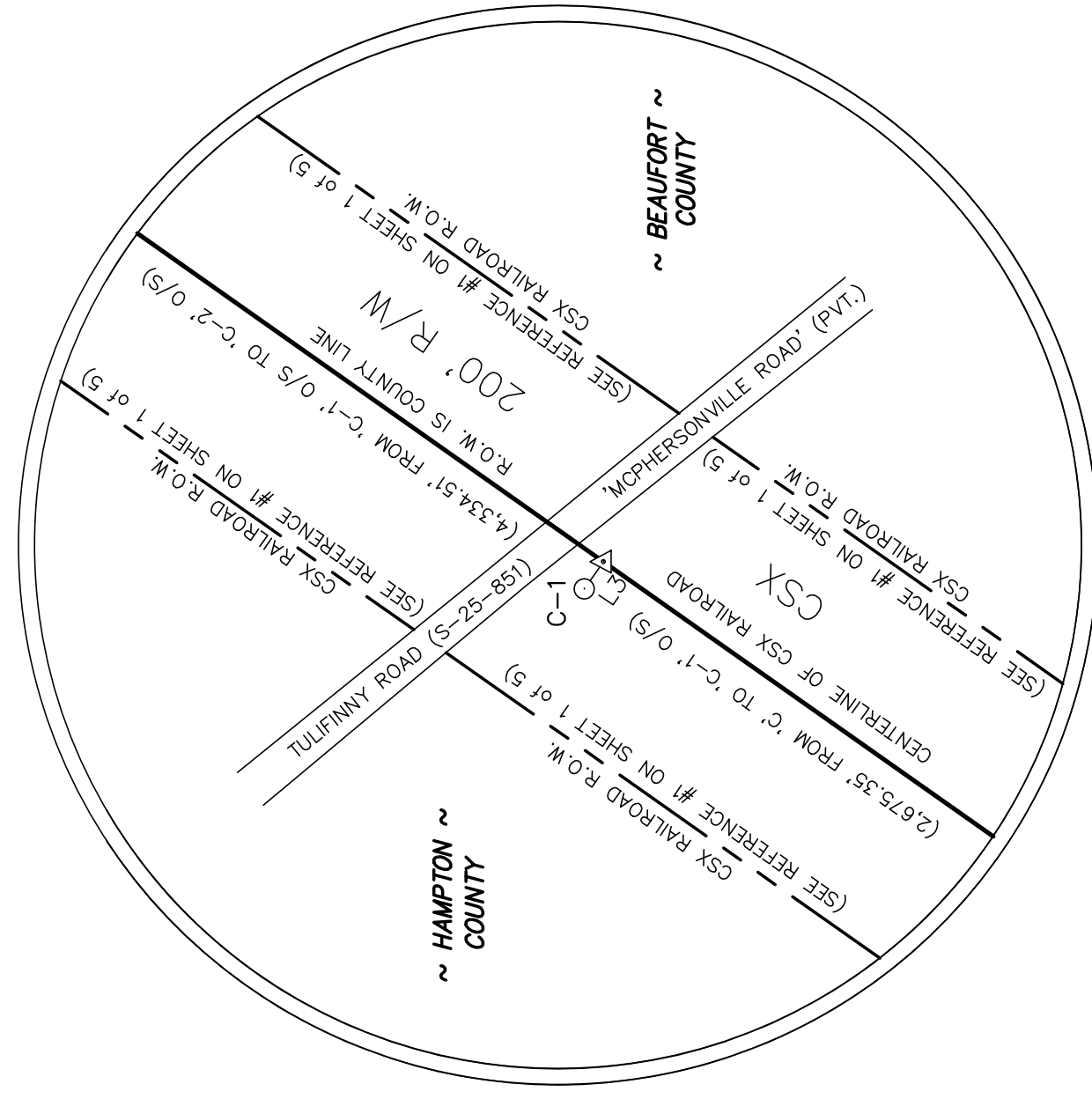
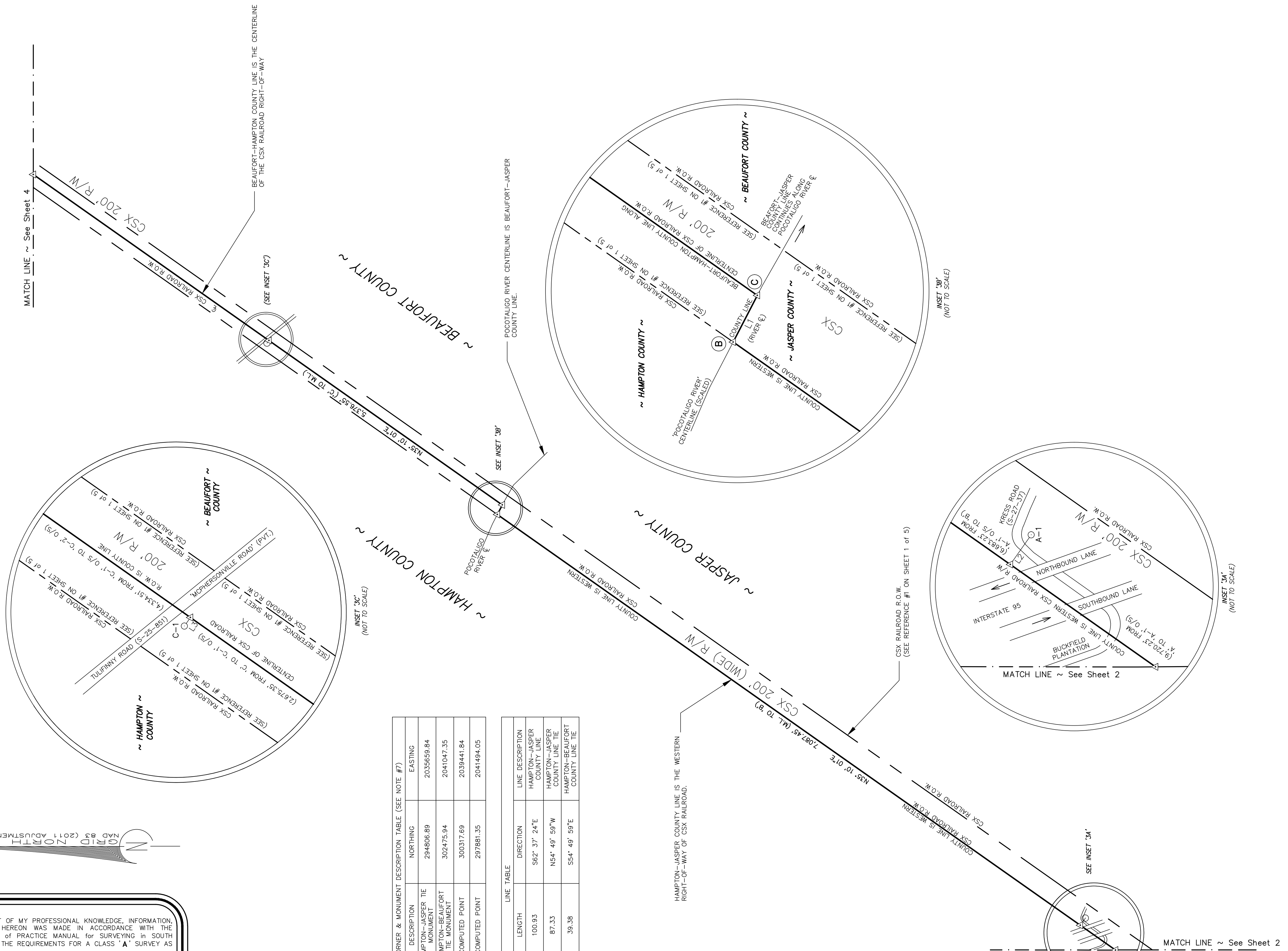


NOT VALID UNLESS SIGNED IN RED INK
R. David Brantley
 4-24-2023
 EMBOSSED SEAL



CORNER/WITNESS	DESCRIPTION	NORTHING	EASTING
A-1	HAMPTON-JASPER TIE MONUMENT	294606.89	2035659.84
C-1	HAMPTON-BEAUFORT TIE MONUMENT	302475.94	2041047.35
B	COMPUTED POINT	300317.69	2039441.84
C	COMPUTED POINT	297881.35	2041494.05

LINE	LENGTH	DIRECTION	LINE DESCRIPTION
L1	100.93	S62° 37' 24" E	HAMPTON-JASPER MONUMENT TO HAMPTON-JASPER COUNTY LINE TIE
L2	87.33	N84° 49' 59" W	HAMPTON-BEAUFORT COUNTY LINE TIE
L3	39.38	S54° 49' 59" E	HAMPTON-BEAUFORT COUNTY LINE TIE



A PLAT OF A PORTION OF THE
BEAUFORT-HAMPTON-JASPER COUNTY LINE
 COMMENCING AT THE INTERSECTION OF THE TULEENIE RIVER (S.K. & "TULEENIE", et al.) WITH THE WESTERN RIGHT-OF-WAY OF THE CSX RAILROAD (U.S. ATLANTIC COAST LINE RAILROAD, et al.) RUNNING THEN NORTHEASTERLY ALONG THE WESTERN RIGHT-OF-WAY OF THE CSX RAILROAD RIGHT-OF-WAY TO ITS INTERSECTION WITH THE POCOTALIGO RIVER; THEN ALONG THE POCOTALIGO RIVER SOUTHEASTWARD TO THE INTERSECTION OF THE RIVER WITH THE CENTERLINE OF THE CSX RAILROAD; THEN RUNNING EAST-NORTHEAST ALONG THE CENTERLINE OF THE CSX RAILROAD RIGHT-OF-WAY TO THE INTERSECTION WITH THE COMBAHEE RIVER.

Date of Survey:
 1-23-2023
 Drawn: KWM
 Design: KAW
 Checked: KAW
 Approved: KAW
 CAD File:
 F.B. & Pg. N/A
 P.B. & Pg. N/A
 Pl. Board Appl. # N/A

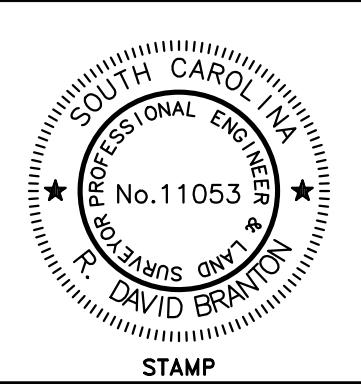
Date	Revision No.

Proj. No.: 15001-002
 Sheet 3 of 5

This is not a valid, true copy of the document unless bearing on embossed seal of the surveyor or engineer.
 Copyright 2023, Cornerstone Surveying & Engineering, Inc. All rights reserved. Reproduction or use of this document, in whole or in part, without permission is prohibited.
 Print No. _____
 Date: ____/____/____

CORNERSTONE
SURVEYING & ENGINEERING, INC.
 1240 Bacons Bridge Rd. • Summerville • South Carolina • 29485 • Phone: 843-871-9706

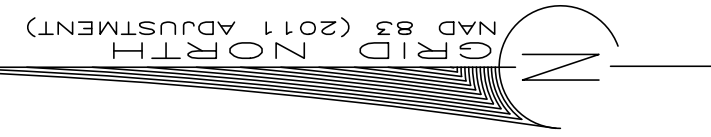
I HEREBY STATE THAT TO THE BEST OF MY PROFESSIONAL KNOWLEDGE, INFORMATION, AND BELIEF, THE SURVEY SHOWN HEREON WAS MADE IN ACCORDANCE WITH THE REQUIREMENTS OF THE "STANDARDS OF PRACTICE MANUAL FOR SURVEYING IN SOUTH CAROLINA", AND MEETS OR EXCEEDS THE REQUIREMENTS FOR A CLASS "A" SURVEY AS SPECIFIED THEREIN.



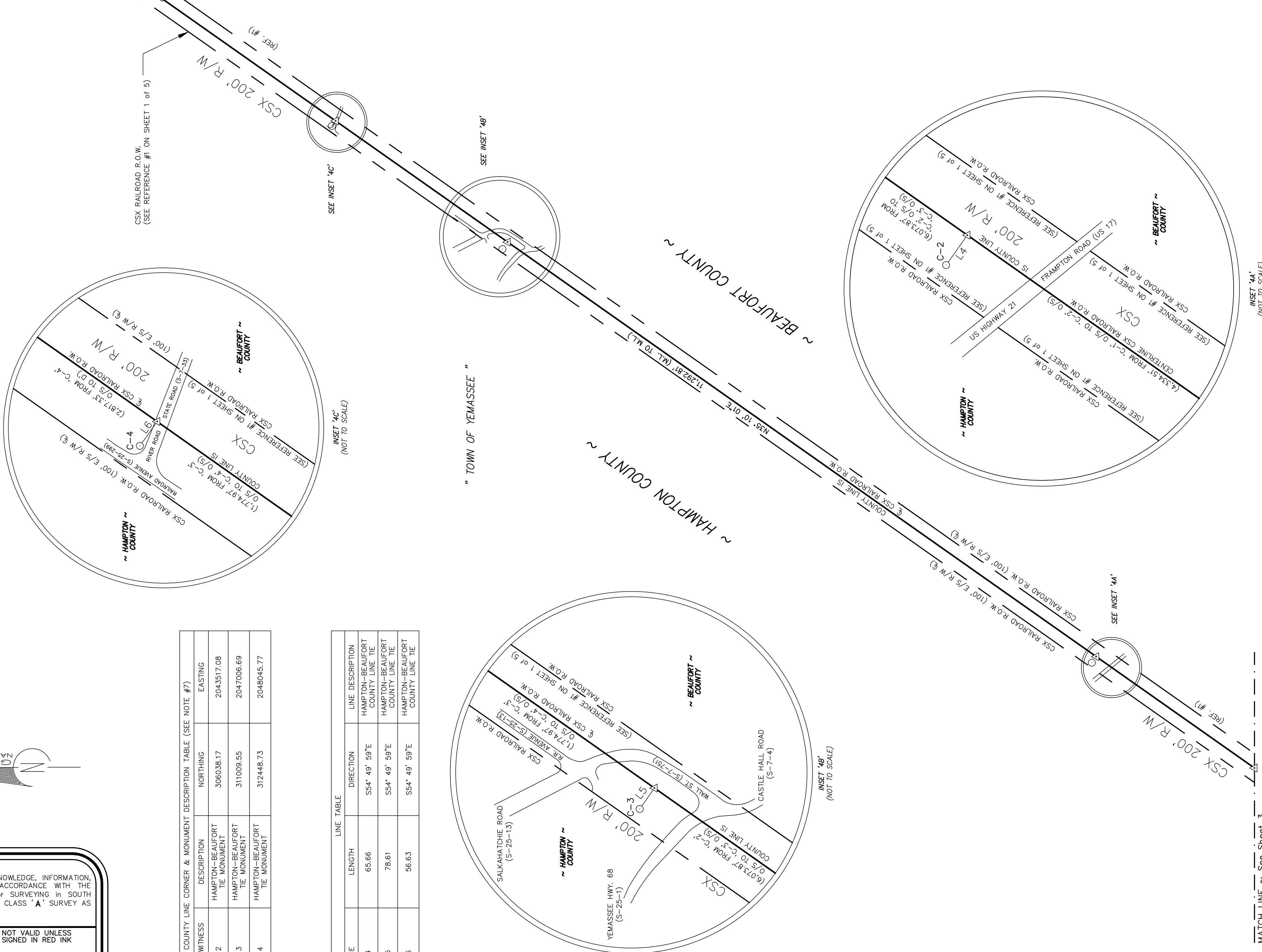
NOT VALID UNLESS SIGNED IN RED INK
R. David Ebration
 4-24-2023
 EMBOSSED SEAL

COUNTY LINE CORNER & MONUMENT DESCRIPTION TABLE (SEE NOTE #7)			
CORNER/WITNESS	DESCRIPTION	NORTHING	EASTING
C-2	HAMPTON-BEAUFORT TIE MONUMENT	306038.17	2043517.08
C-3	HAMPTON-BEAUFORT TIE MONUMENT	311009.55	2047006.69
C-4	HAMPTON-BEAUFORT TIE MONUMENT	312448.73	2048045.77

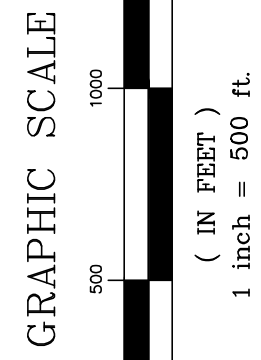
LINE TABLE		
LINE	LENGTH	LINE DESCRIPTION
L4	65.66	HAMPTON-BEAUFORT COUNTY LINE TIE
L5	78.61	HAMPTON-BEAUFORT COUNTY LINE TIE
L6	56.63	HAMPTON-BEAUFORT COUNTY LINE TIE



MATCH LINE ~ See Sheet 5



MATCH LINE ~ See Sheet 3



A PLAT OF A PORTION OF THE
BEAUFORT-HAMPTON-JASPER COUNTY LINE
 COMMENCING AT THE INTERSECTION OF THE TULEFINNIE RIVER (a.k.a. "TULFINNY", et al.) WITH THE WESTERN RIGHT-OF-WAY OF THE CSX RAILROAD (a.k.a. ATLANTIC COAST LINE RAILROAD, et al.) WITH THE WESTERN RIGHT-OF-WAY OF THE CSX RAILROAD (RIGHT-OF-WAY) TO ITS INTERSECTION WITH THE POCOTALGO RIVER; THEN ALONG THE POCOTALGO RIVER SOUTHEASTWARD TO THE INTERSECTION OF THE RIVER WITH THE CENTERLINE OF THE CSX RAILROAD THEN RUNNING EAST-NORTHEAST ALONG THE CENTERLINE OF THE CSX RAILROAD RIGHT-OF-WAY TO THE INTERSECTION WITH THE COMBAHEE RIVER.

Date of Survey:
 1-23-2023
 Drawn: KWM
 Design: KAW
 Checked: KAW
 Approved: KAW
 CAD File:
 F.B. & Pg. N/A
 P.B. & Pg. N/A
 PLBoard Appl.# N/A

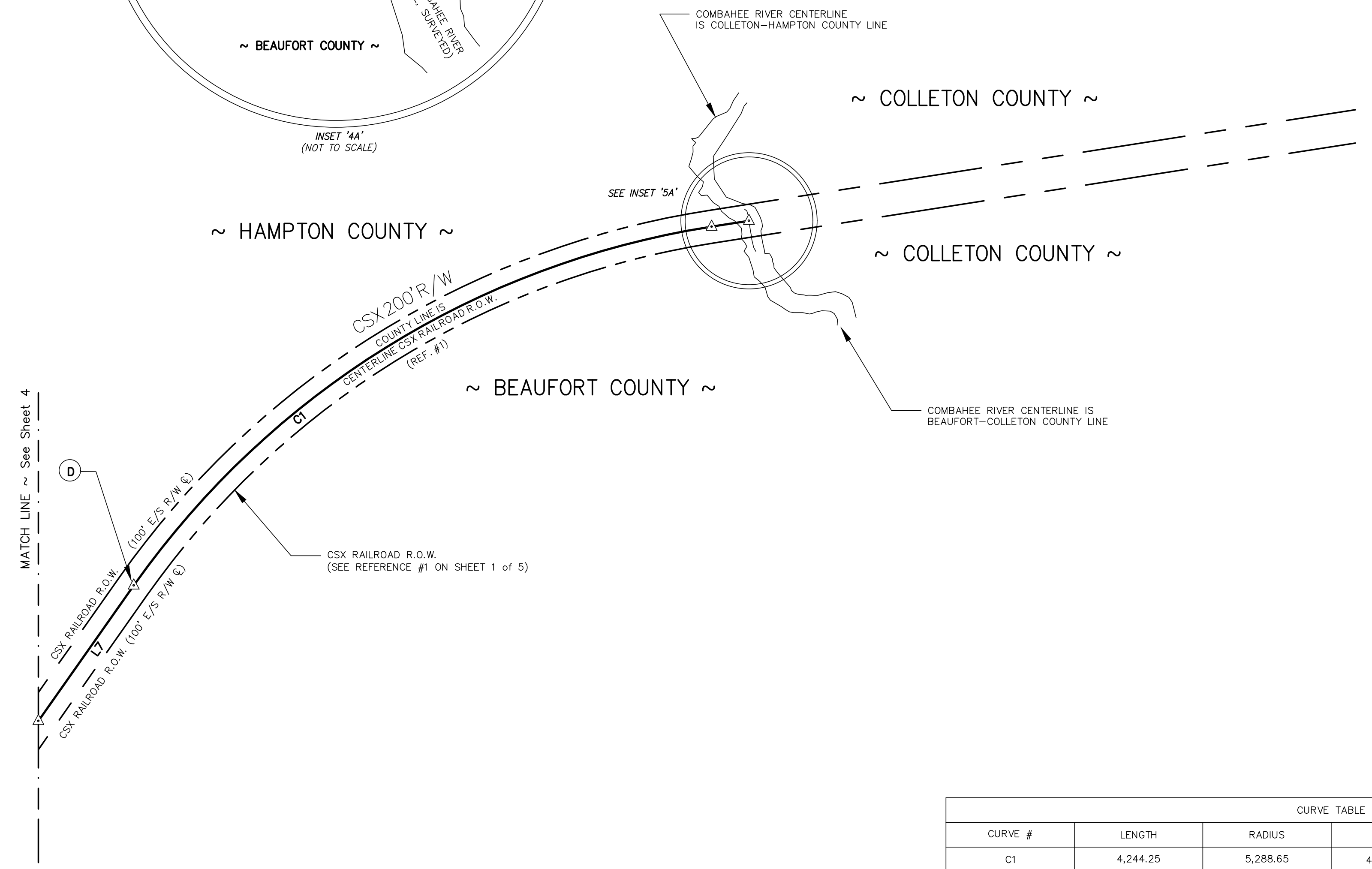
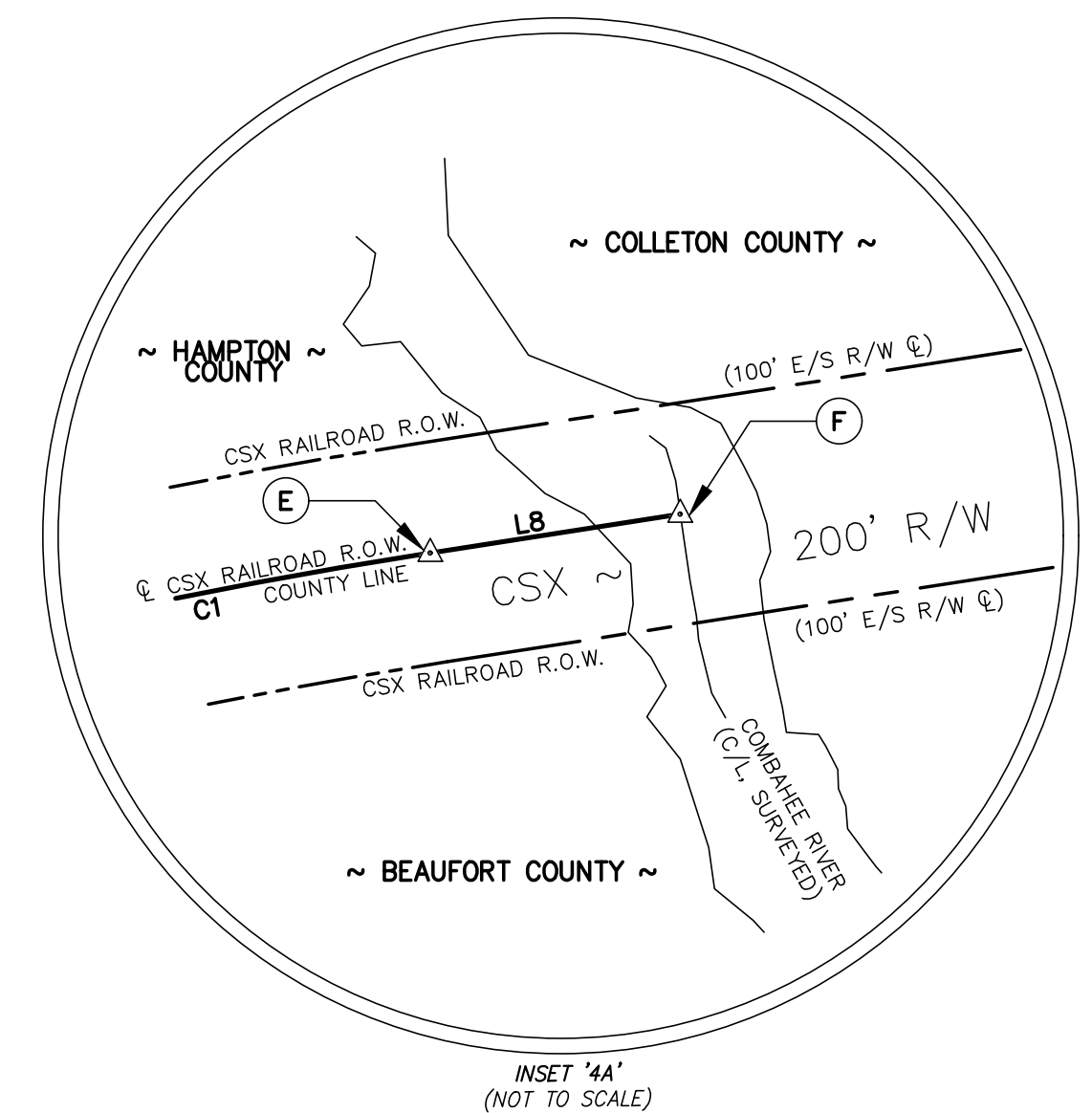
Date	Revision No.

Proj. No.: 15001-002
 Sheet 4 of 5

This is not a valid, true copy of the document unless bearing on the embossed seal of the surveyor or engineer.
 Copyright 2023, Cornerstone Surveying & Engineering, Inc. All rights reserved. Reproduction or use of this document, in whole or in part, without permission is prohibited.
 Print No. _____
 Date: ____/____/____

CORNERSTONE
SURVEYING & ENGINEERING, INC.
 1240 Bacons Bridge Rd. • Summerville • South Carolina • 29485 • Phone: 843-871-9706

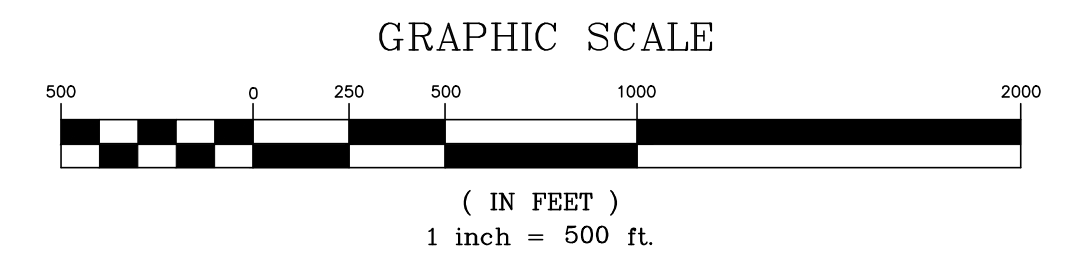
NORTH
 GRID COORDINATE SYSTEM
 NAD 83 (GDT1 ADJUSTMENT)



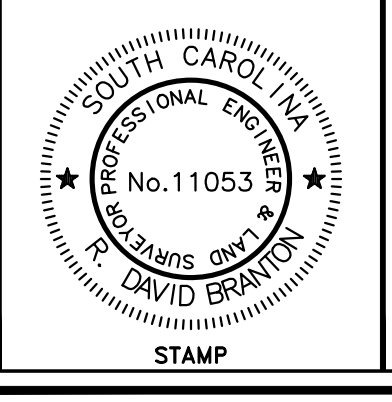
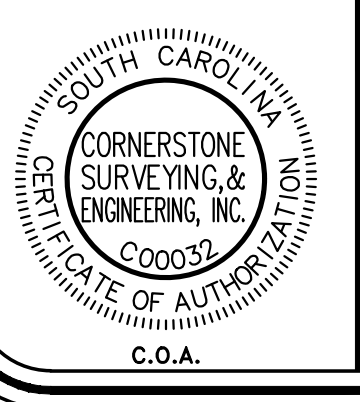
CURVE TABLE					
CURVE #	LENGTH	RADIUS	DELTA	CHORD LENGTH	CHORD DIRECTION
C1	4,244.25	5,288.65	45° 58' 52"	4,131.27	S58° 09' 27"W

COUNTY LINE CORNER & MONUMENT DESCRIPTION TABLE			
CORNER/WITNESS	DESCRIPTION	NORTHING	EASTING
D	POINT OF CURVATURE	314721.04	2049712.16
E	POINT OF TANGENT	316900.64	2053221.68
F	COMPUTED POINT	316936.03	2053448.90

LINE TABLE			
LINE #	LENGTH	DIRECTION	LINE DESCRIPTION
L7	1,006.67	N35° 10' 01"E	M.L. TO 'E' (P.C. ☒ R.R. R/W)
L8	229.96	N81° 08' 53"E	'F' TO 'S' & COLLETON COUNTY LINE AT ☒ OF COMBAHEE RIVER



I HEREBY STATE THAT TO THE BEST OF MY PROFESSIONAL KNOWLEDGE, INFORMATION, AND BELIEF, THE SURVEY SHOWN HEREON WAS MADE IN ACCORDANCE WITH THE REQUIREMENTS OF THE "STANDARDS OF PRACTICE MANUAL FOR SURVEYING IN SOUTH CAROLINA", AND MEETS OR EXCEEDS THE REQUIREMENTS FOR A CLASS "A" SURVEY AS SPECIFIED THEREIN.



NOT VALID UNLESS SIGNED IN RED INK

R. David Epration

4-24-2023

EMBOSSED SEAL

This is not a valid, true copy of the document unless bearing on embossed seal of the surveyor or engineer.

Copyright 2023, Cornerstone Surveying & Engineering, Inc. All rights reserved. Reproduction or use of this document, in whole or in part, without permission is prohibited.

Print No. _____
Date: 4/24/23

CORNERSTONE
SURVEYING & ENGINEERING, INC.

1240 Bacons Bridge Rd. • Summerville • South Carolina • 29485 • Phone: 843-871-9706

A PLAT OF A PORTION OF THE
BEAUFORT-HAMPTON-JASPER COUNTY LINE
 COMMENCING AT THE INTERSECTION OF THE TULFENNIE RIVER (a.k.a. "TULFINNY", et al.) WITH THE WESTERN RIGHT-OF-WAY OF THE CSX RAILROAD (i.k.a. "ATLANTIC COAST LINE RAILROAD, et al.") RUNNING THEN NORTHEASTERLY ALONG THE WESTERN RIGHT-OF-WAY OF THE CSX RAILROAD RIGHT-OF-WAY TO THE INTERSECTION WITH THE POCOTALIGO RIVER, THEN ALONG THE POCOTALIGO RIVER SOUTHEASTWARD TO THE INTERSECTION OF THE RAILROAD RIGHT-OF-WAY WITH THE CENTERLINE OF THE CSX RAILROAD RIGHT-OF-WAY TO THE INTERSECTION WITH THE COMBAHEE RIVER.

Date of Survey:
 1-23-2023

Drawn: KWM
 Design: KAW
 Checked: KAW
 Approved: KAW
 CAD File:
 F.B. & Pg. N/A
 P.B. & Pg. N/A
 Pl. Board Appl. # N/A

Date	Revision No.

Proj. No.: 15001-002
 Sheet 5 of 5