

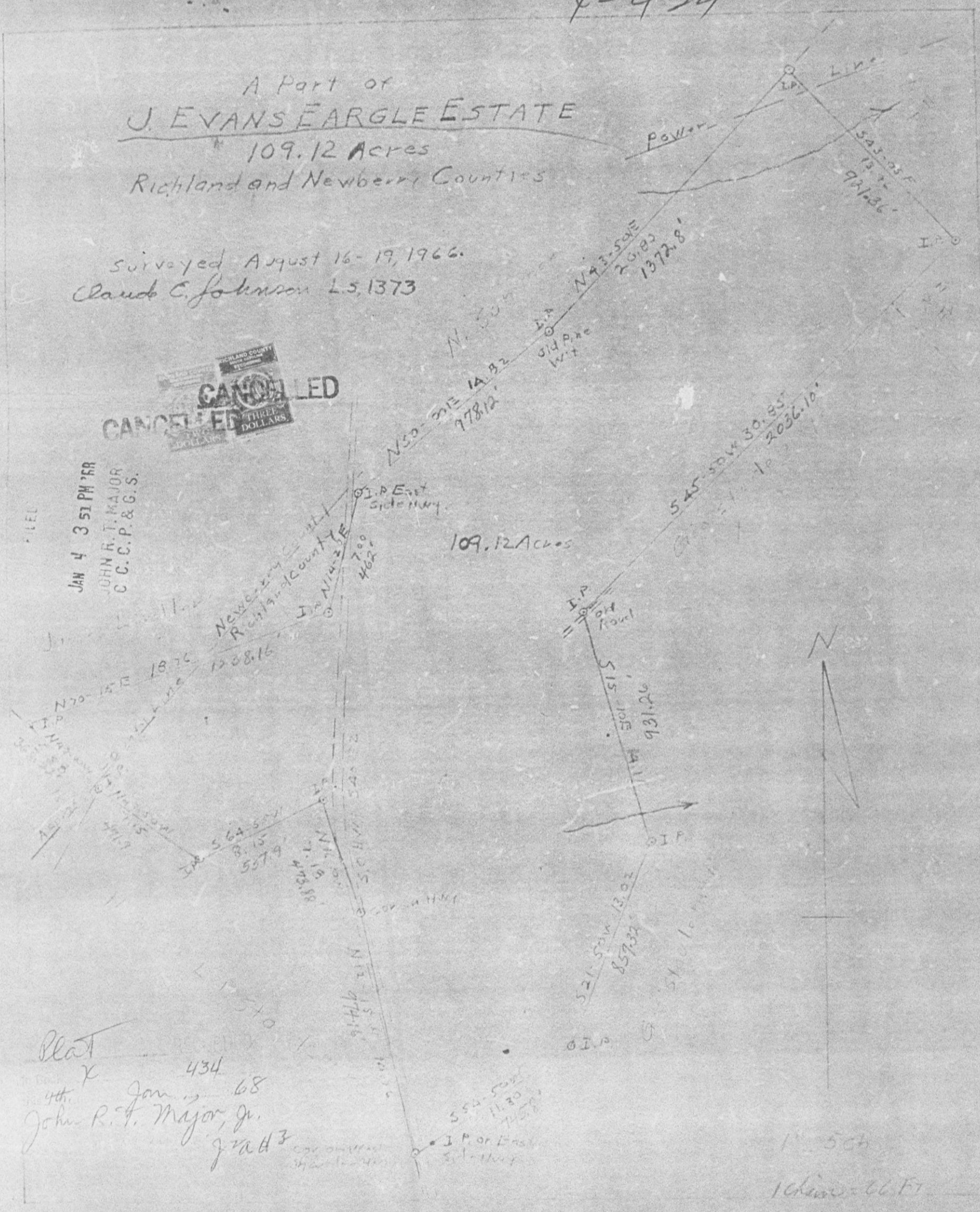
Y-434

A Part of
J. EVANS EARGLE ESTATE
109.12 Acres
Richland and Newberry Counties

Surveyed August 16-19, 1966.
Claude C. Johnson L.S. 1373

CANCELLED
THREE DOLLARS

FILED
JAN 4 3 51 PM '68
JOHN R. T. MAJOR
C.C.P. & G.S.



Plat
X
434
4th. Jan. 68
John R. T. Major, Jr.
grad

1" = 500'
1 Chain = 66 FT

