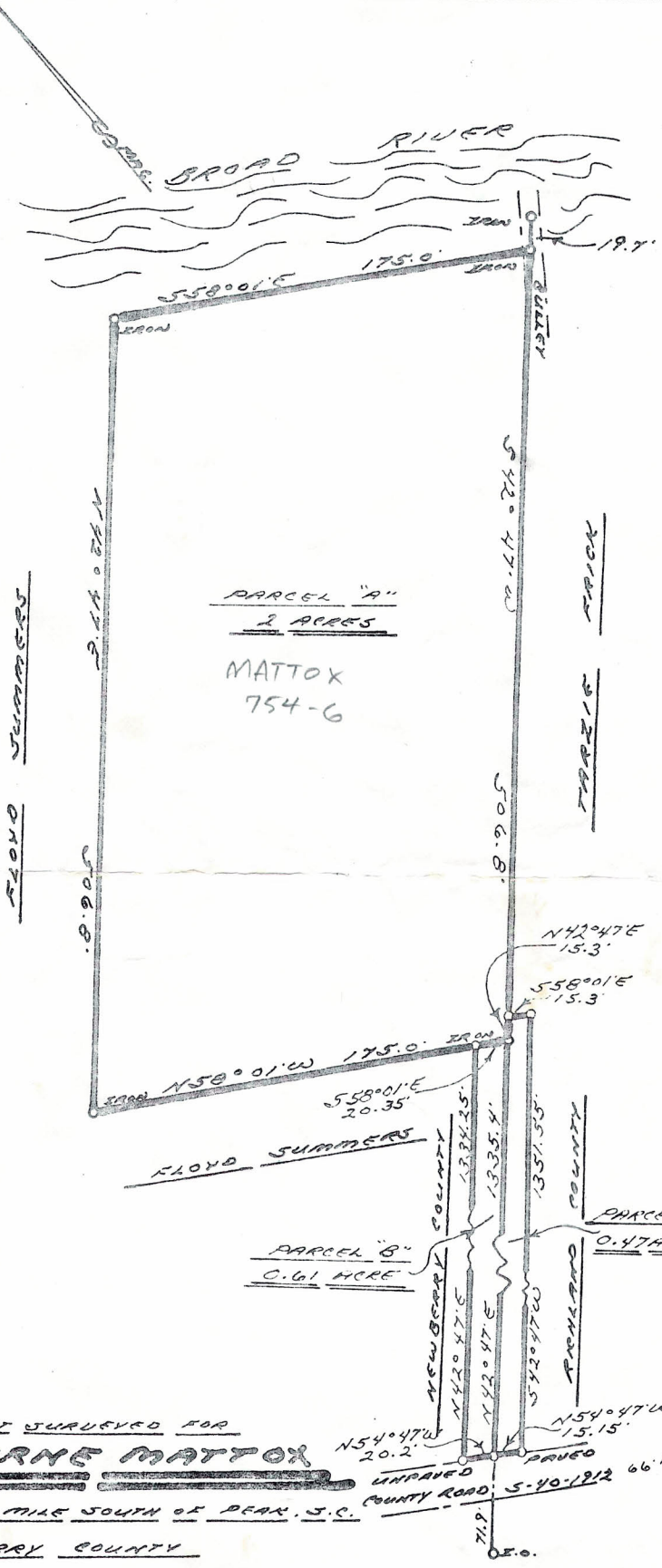
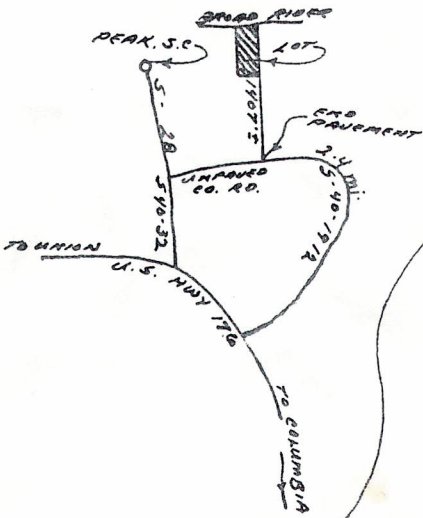


LOCATION MAP
(NOT TO SCALE)



FILED
NEWBERRY COUNTY
AUG 29 4 29 PM '79
MILDRED R. HARMON
CLERK OF COURT

REC. PROPERTY OF AUGUST STOUDEMAYER BY KARL B. SHULER DATED DEC. 15, 1949.

ARTHUR J. WEED
LEESVILLE, S. C.

SCALE 1" = 100'
APRIL 14, 1979

I HEREBY CERTIFY THAT THE RATIO OF PRECISION OF THE FIELD SURVEY IS 1:5000 AND THE AREA WAS DETERMINED BY O.M.D. METHOD OR AREA CALCULATIONS.

Arthur J. Weed
REC. LAND SURVEYOR #4199

REVISED AUG. 9, 1979 TO SHOW PARCELS A, B, & C.