

### INDEX OF SHEETS

- Sheet No. 1 Title Sheet
- 1-A Moving Item Sheet
- " 2-2A Typical Sections of Improvement
- " 3 Superelevation "
- " 4 Bridge Std.
- " 5-10 Plan and Profile
- " 11-20 Cross Sections

## SOUTH CAROLINA STATE HIGHWAY DEPARTMENT COLUMBIA

# PLAN AND PROFILE OF PROPOSED STATE HIGHWAY

File 40-844 Proj. C-844  
Road S-1912

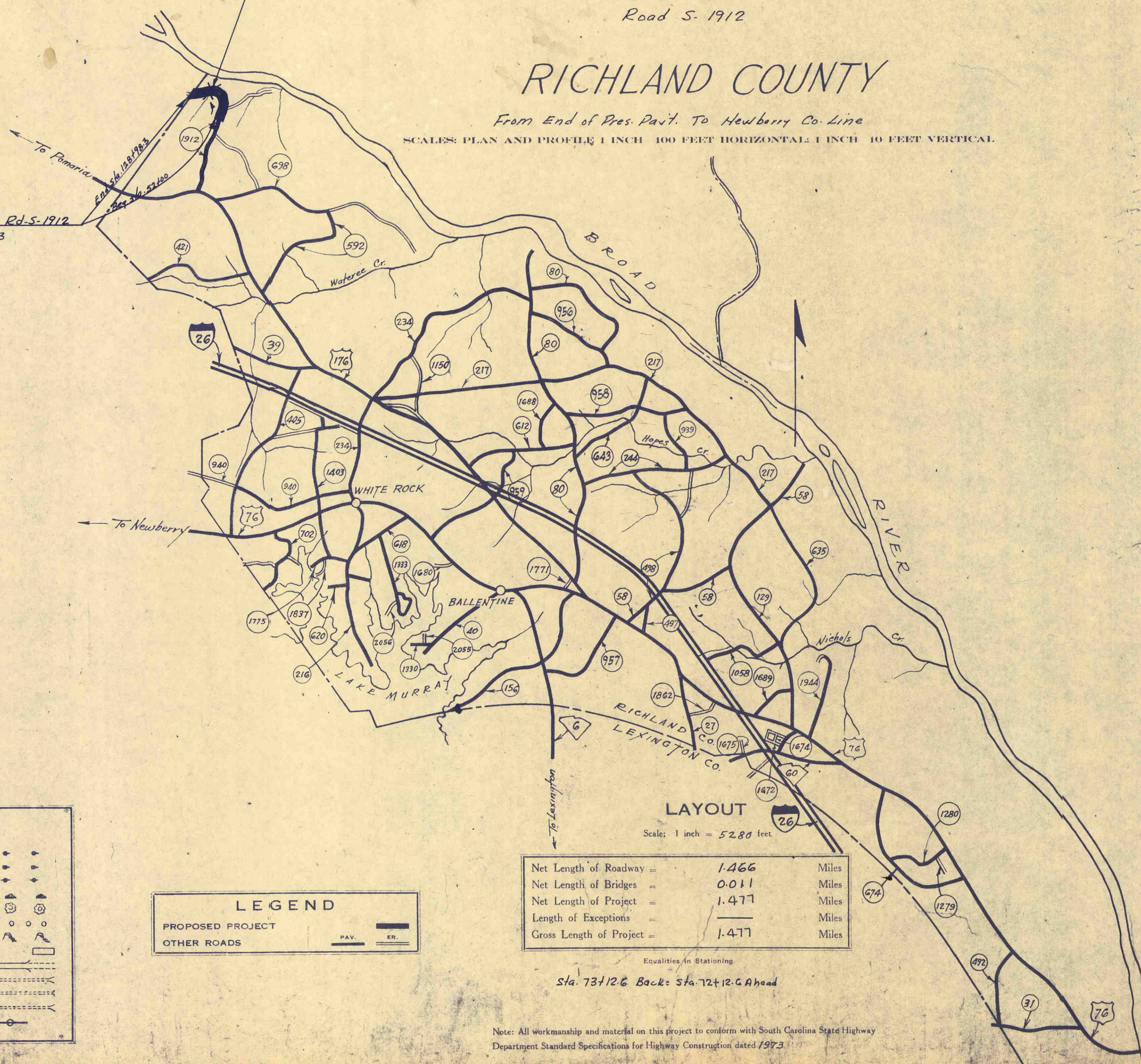
## RICHLAND COUNTY

From End of Pres. Pavt. To Newberry Co. Line

SCALE: PLAN AND PROFILE 1 INCH = 100 FEET HORIZONTAL 1 INCH = 10 FEET VERTICAL

*60' Precast Concrete Bridge To Be Constructed  
From Sta. 96440 To Sta. 97100 By S.C.H.D.  
As. File 40-844.1*

*Proj. C-844 File 40-844 Rd-S-1912  
From Sta. 52400 To Sta. 128498.3  
See Sheet No. 5 thru 10.*



CONVENTIONAL SIGNS	
State Line	Trolley Poles
County Line	Power Poles
City or Town Limits	Telephone or Telegraph Poles
Property Line	Marsh
Fence	Trees
Retaining Wall	Brush
Existing Road	Stumps
℄ and R.O.W. Lines of	Buildings
Proposed Road	Bridge
Railroad	Concrete Box Culvert
Levee or Embankment	Pipe Culvert
Guard Rail	Drop Inlet and Culvert
Point of Intersection (P. I.)	Hub on Center Line

LEGEND	
PROPOSED PROJECT	PAV.
OTHER ROADS	ER.

Net Length of Roadway	=	1.466	Miles
Net Length of Bridges	=	0.011	Miles
Net Length of Project	=	1.477	Miles
Length of Exceptions	=		Miles
Gross Length of Project	=	1.477	Miles

Note: All workmanship and material on this project to conform with South Carolina State Highway Department Standard Specifications for Highway Construction dated 1973

### SUMMARY OF ESTIMATED QUANTITIES

	QUANTITY	UNIT
<b>EARTHWORK</b>		
Clearing and Grubbing within Roadway	NEC.	L.S.
Clearing and Grubbing of Borrow and Material Pits	1.5	ACRES
Ungrassed Excavation	11,111	C.Y.
Overhaul	176,968	C.Y.H.M.
Selected Material for Shoulders	923	C.Y.
<b>BASE COURSE</b>		
Earth Type Base Course (P.A. Mat.)	3896	C.Y.
Scarifying, Mixing, Remixing, Shaping and Reshaping	18,723	M.S.Y.
<b>SURFACING</b>		
Bituminous Surfacing (Double Treat.) Type 1or2	17,863	S.Y.
<b>STRUCTURES</b>		
18" R.C. Pipe Culvert (Class III)	296	L.F.
18" R.C. Pipe Culvert (Class III)	404	L.F.
30" R.C. Pipe Culvert (Class III)	88	L.F.
15' Relaid Pipe Culvert	20	L.F.
Seeding (Unmulched)	2250	M.S.Y.
Fertilizer (4-12-12)	0.3	TONS
Lime	0.6	TONS
Nitrogen (Actual)	21	LBS.

See Sheet No. 1-A For Moving Items and Fences

RECOMMENDED BY:  
*J. B. Brindley* 2-3-75  
ENGINEER DATE

SUBMITTED BY:  
*J. B. Taylor* 2-3-75  
ROAD PLANS ENGINEER DATE

APPROVED:  
*Paul W. Cott* 2-7-75  
STATE HIGHWAY ENGINEER DATE

DEPARTMENT OF COMMERCE  
BUREAU OF PUBLIC ROADS

RECOMMENDED FOR APPROVAL:

DISTRICT ENGINEER DATE

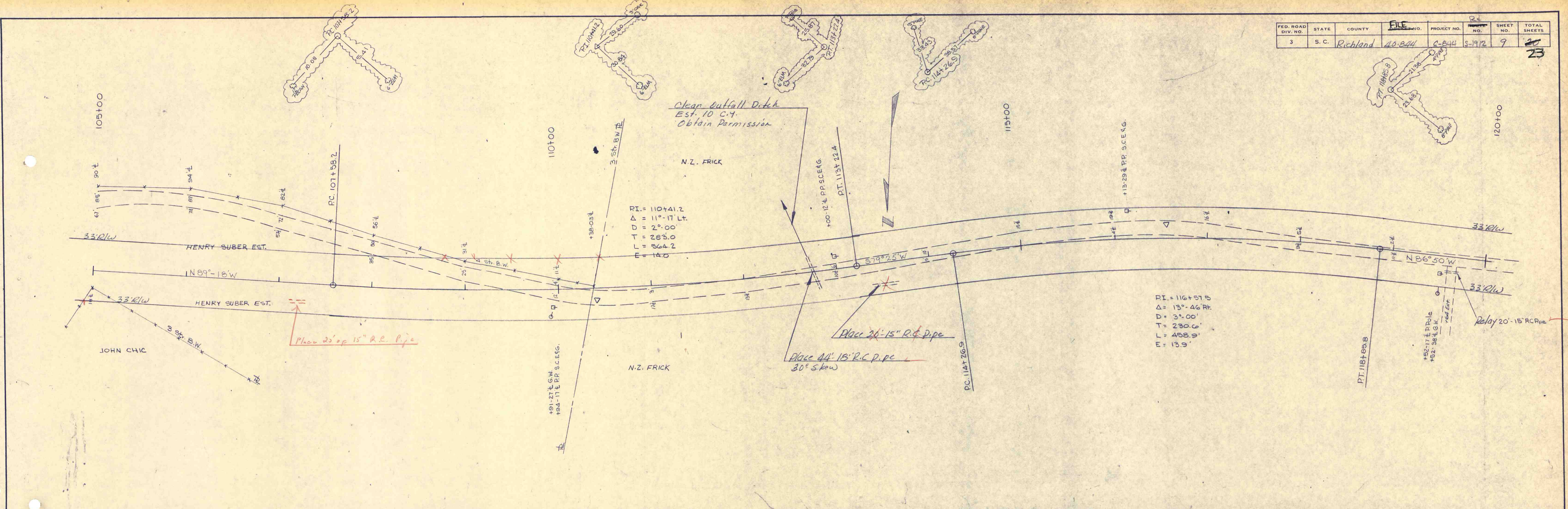
APPROVED:

DIVISION ENGINEER DATE

FED. ROAD DIV. NO.	STATE	COUNTY	FILE NO.	PROJECT NO.	SHEET NO.	TOTAL SHEETS
3	S. C.	Richland	40-844	2-844	9	23

DATE	BY
	PCG/SOR/NLP

PLAN  
NOTE BOOK  
NO.



DATE	BY
	PCG/SOR/NLP

PROFILE  
NOTE BOOK  
NO.

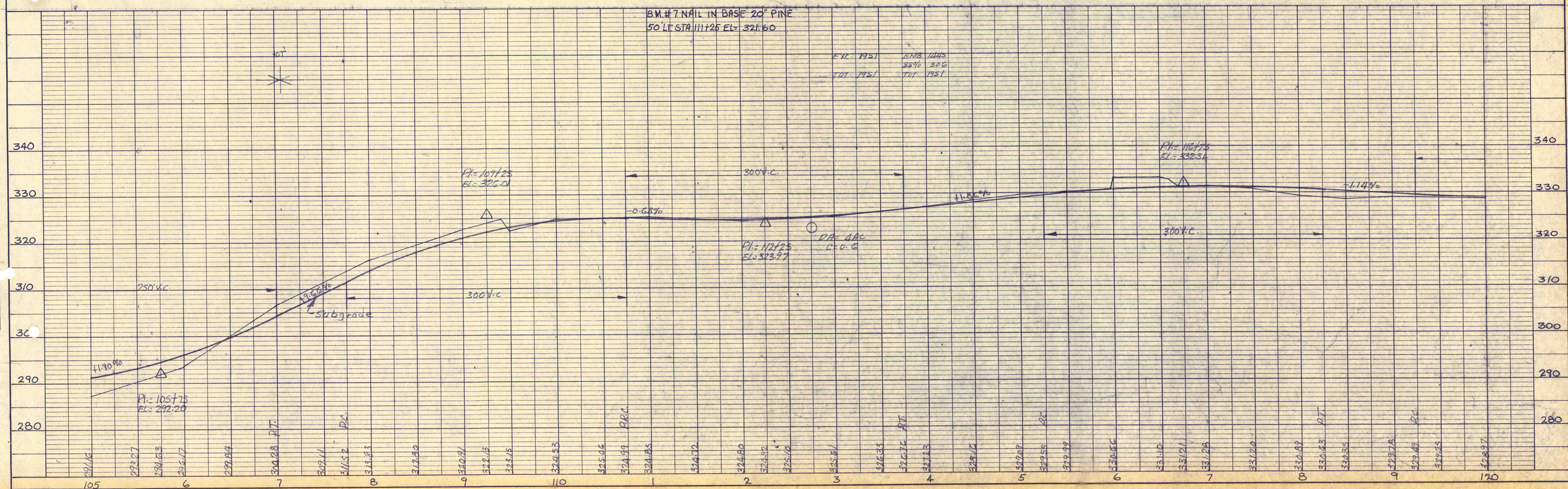
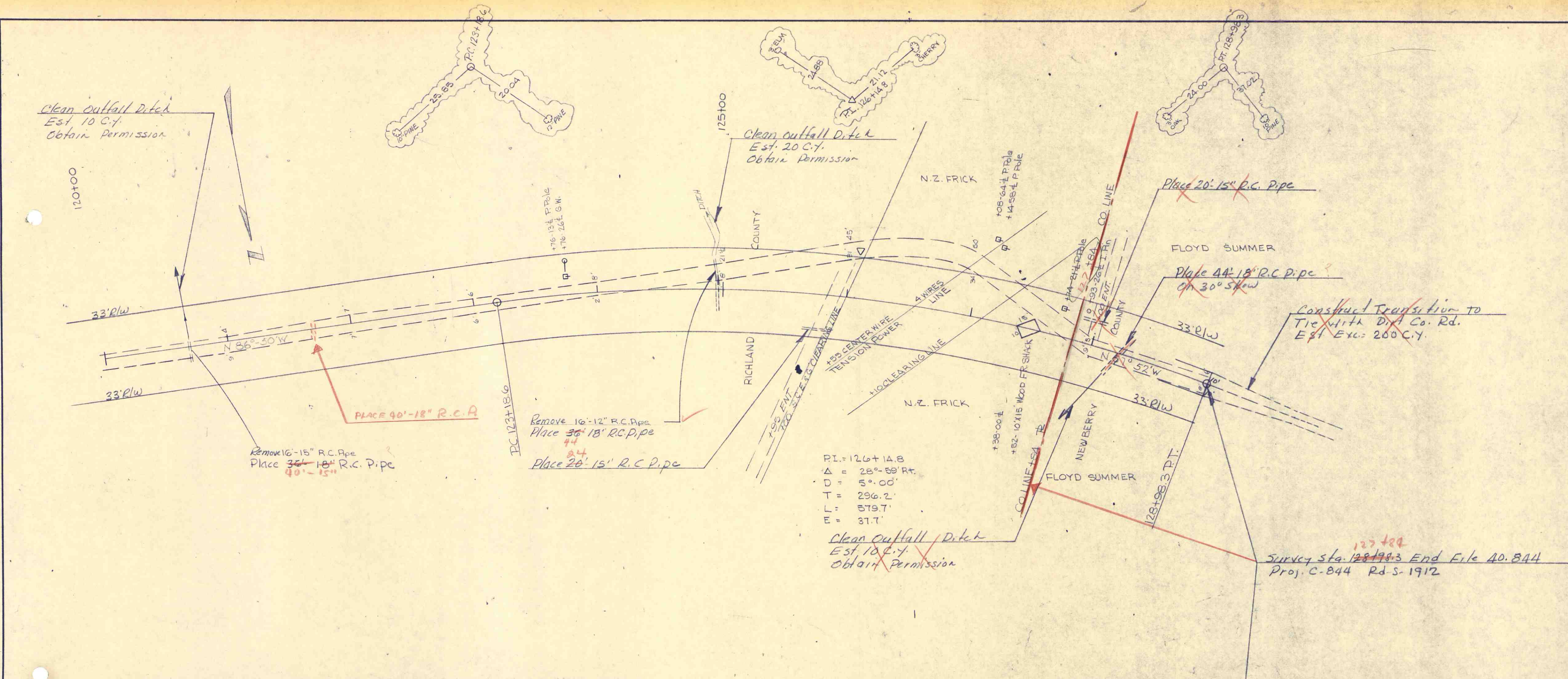


PLATE 1, PLAN-PROFILE

DATE: \_\_\_\_\_ BY: \_\_\_\_\_  
 SURVEYED: \_\_\_\_\_  
 PLOTTED: \_\_\_\_\_  
 NOTE BOOK: \_\_\_\_\_  
 NO. \_\_\_\_\_



PI = 126+14.8  
 $\Delta = 28^{\circ} 58' RT$   
 $D = 5^{\circ} 00'$   
 $T = 296.2'$   
 $L = 579.7'$   
 $E = 37.7'$

Survey Sta. 128+98.3 End File AD-844  
 Proj. C-844 Rd S-1912

DATE: \_\_\_\_\_ BY: \_\_\_\_\_  
 SURVEYED: \_\_\_\_\_  
 PLOTTED: \_\_\_\_\_  
 NOTE BOOK: \_\_\_\_\_  
 NO. \_\_\_\_\_

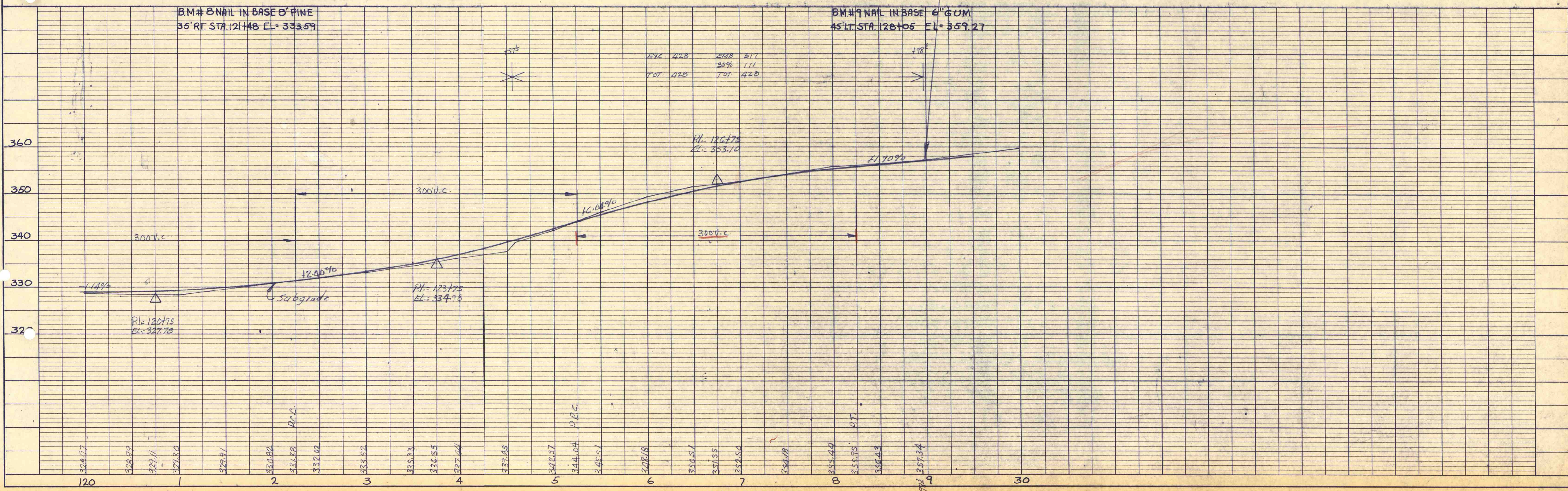


PLATE 1, PLAN-PROFILE  
 K&M ENGINEERS & ARCHITECTS

Richland Co  
 RD S-1912  
 6