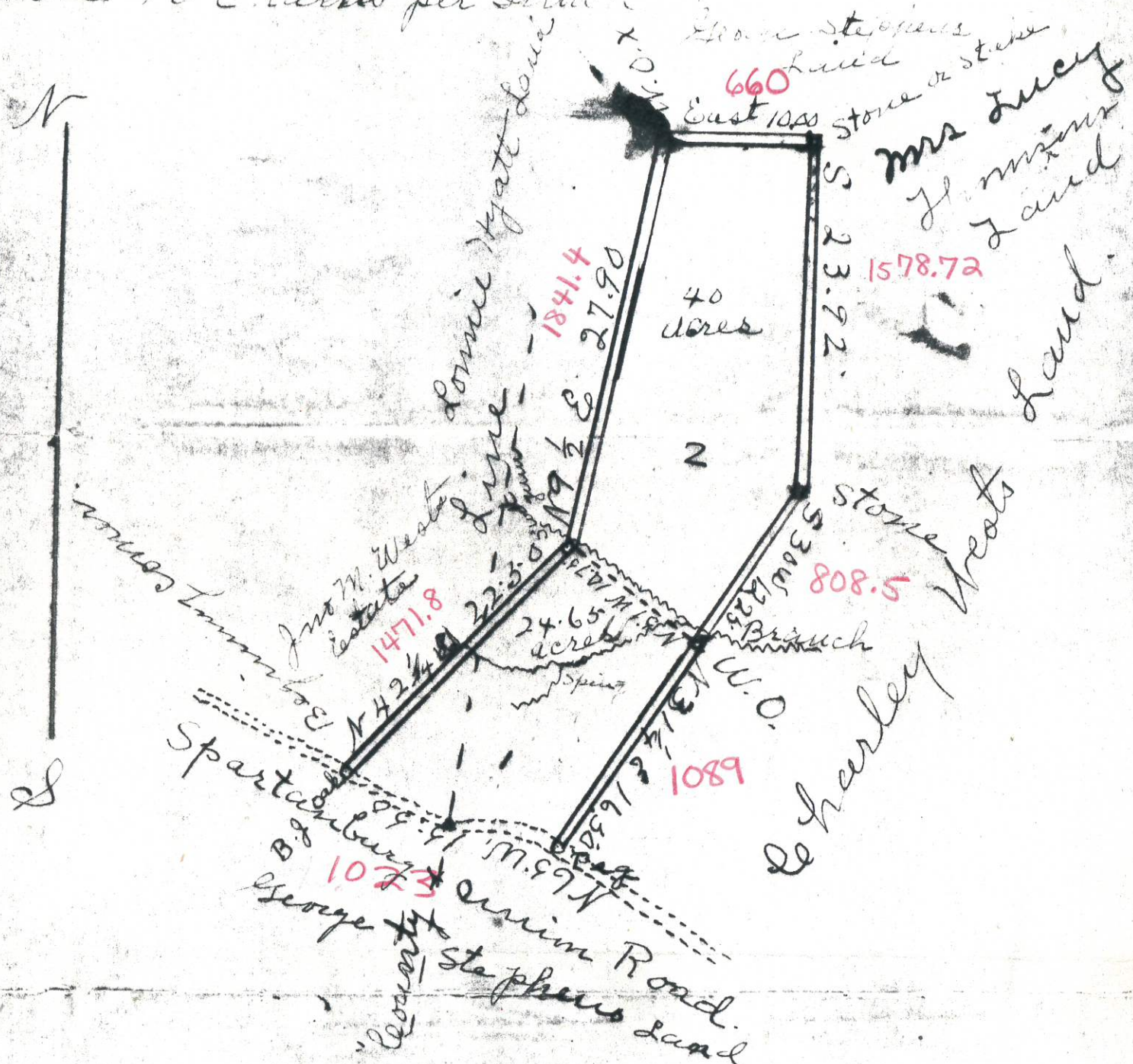


Scale 10 chains per inch



South Carolina
Durim County
Boysville Township

The above plat is a copy of two plats of two tracts of land combined. No. 1 surveyed by John D. Young Jan. 29 1878 contains (24.65) Twentyfour sixty five one hundredth acres.

No. 2 surveyed by Glenn D. Peake, D.S. July 1875 and resurveyed by John D. Young Feb. 29. 1878 contains (40) Forty acres