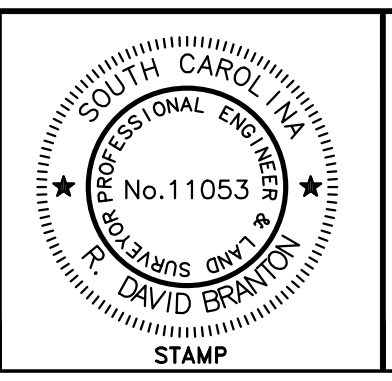


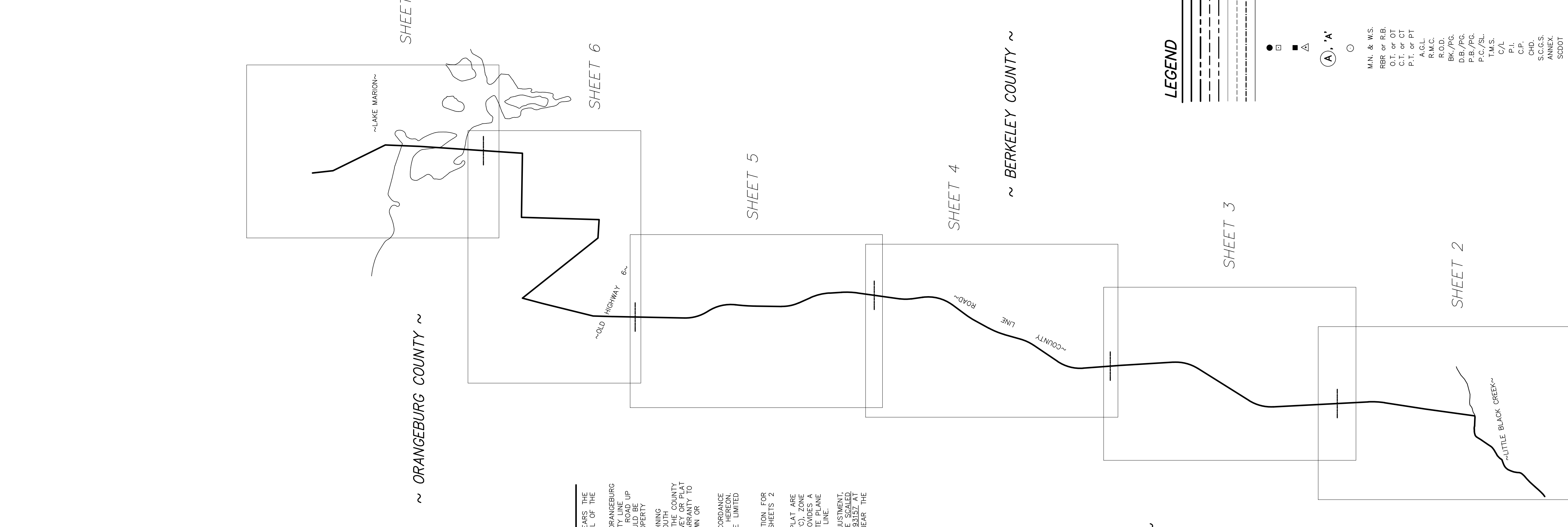
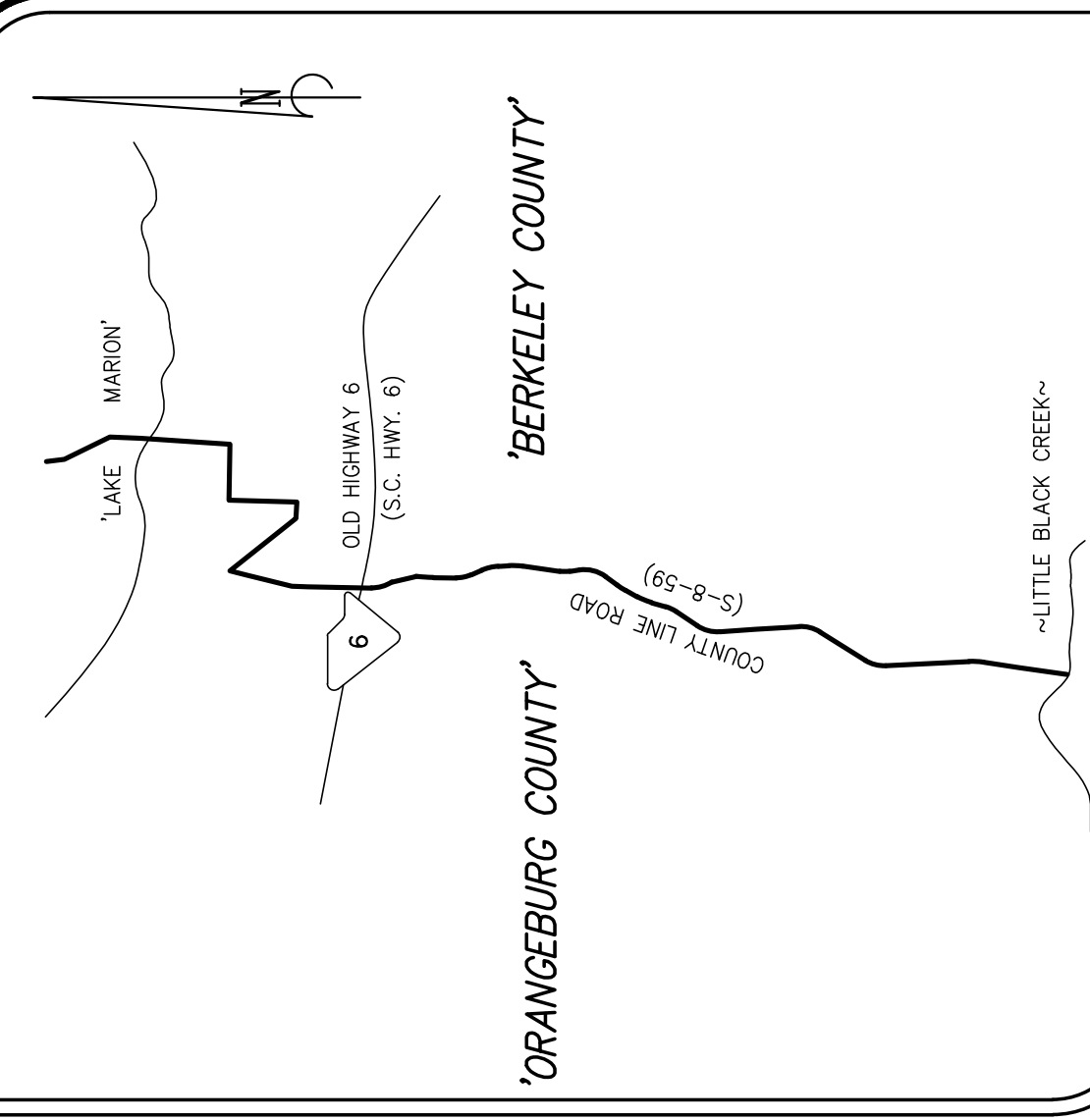
I HEREBY STATE THAT TO THE BEST OF MY PROFESSIONAL KNOWLEDGE, INFORMATION, AND BELIEF, THE SURVEY SHOWN HEREON WAS MADE IN ACCORDANCE WITH THE REQUIREMENTS OF THE 'STANDARDS OF PRACTICE MANUAL FOR SURVEYING IN SOUTH CAROLINA' (EFFECTIVE JUNE 26, 2009), AS PER ARTICLE 4, REGULATION 49-420 F., THAT THIS MAP OR PLAT IS INTENDED ONLY TO SHOW INFORMATION SURVEYED FOR A SPECIFIC STATED PURPOSE; THAT SURVEY LINES SHOWN HEREON ARE BASED ON ACTUAL FIELD SURVEY EVIDENCE, AND/OR MEASUREMENTS WHICH MEET OR EXCEED THE REQUIREMENTS FOR A CLASS 'A' SURVEY AS SPECIFIED THEREIN.



NOT VALID UNLESS
SIGNED IN RED INK

D. Brantley
12-1-2022

EMBOSSSED SEAL



~ ORANGEBURG COUNTY ~

~ BERKELEY COUNTY ~

~ ORANGEBURG COUNTY ~

~ BERKELEY COUNTY ~

~ ORANGEBURG COUNTY ~

~ BERKELEY COUNTY ~

~ ORANGEBURG COUNTY ~

~ BERKELEY COUNTY ~

~ ORANGEBURG COUNTY ~

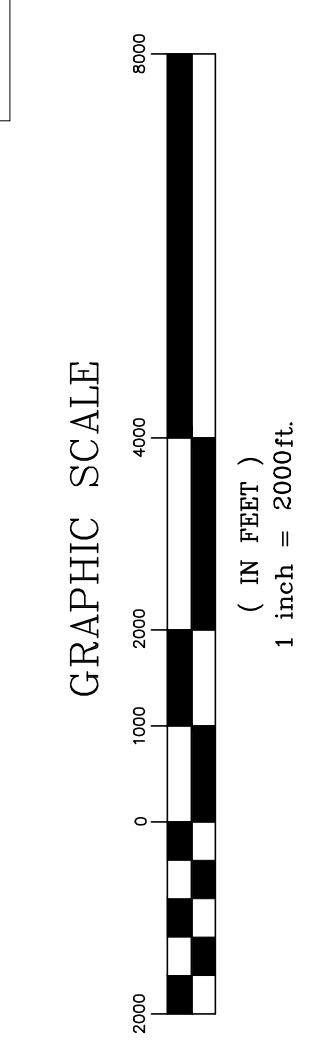
~ BERKELEY COUNTY ~

- NOTES**
- THIS IS NOT A VALID, TRUE COPY OF THIS DOCUMENT UNLESS IT BEARS THE ORIGINAL SIGNATURE, SIGNATURE DATE, AND THE RAISED, EMBOSSED SEAL OF THE REGISTERED PROFESSIONAL LAND SURVEYOR NOTED HEREON.
 - THE PURPOSE OF THIS PLAT IS TO MAP THE SECTION OF THE BERKELEY-ORANGEBURG COUNTY LINE FROM THE INTERSECTION OF THE COUNTY LINE ROAD UP TO A CALCULATED POINT ON LAKE MARION. IT IS NOT INTENDED NOR SHOULD BE CONSTRUED TO BE A BOUNDARY SURVEY OR BOUNDARY PLAT OF THE PROPERTY SHOWN HEREON. THE BOUNDARY LINES AND BOUNDARY LINES OF THE ADJOINING PROPERTIES MAY BE CONGRUENT IF AND ONLY IF SO SPECIFIED BY THE SOUTH CAROLINA LEGISLATIVE ACT(S) THAT ESTABLISH AND DESCRIBE OR DEFINE THE COUNTY LINE AS PROVIDED IN PLAT BERKELEY-ORANGEBURG COUNTY LINE SURVEY OR PLAT BERKELEY-ORANGEBURG COUNTY LINE SURVEY. THE ADJACENT PARCELS BEING SHOWN AT THE TITLE PROPERTY BOUNDARIES OF THE ADJACENT PARCELS BEING SHOWN OR REFERENCED HEREON.
 - THIS PLAT HAS BEEN DONE FOR THE STATE OF SOUTH CAROLINA IN ACCORDANCE WITH THEIR PLANNED USE AND PURPOSE OF THE INFORMATION SHOWN HEREON. ALL OTHER PARTIES ARE SUBSEQUENTLY PUT ON NOTICE AS TO THE LIMITED DEGREE OF RELIANCE UPON THIS PLAT BY THIRD PARTIES.
 - FOR ADDITIONAL NOTES SPECIFIC TO THIS SURVEY AND THE INFORMATION FOR THIS PLAT, AND THE COUNTY BOUNDARY LINE SHOWN HEREON, SEE SHEETS 2 THRU 7 OF 7.
 - ALL 'NORTHING' (N.) and 'EASTING' (E.) COORDINATES SHOWN ON THIS PLAT ARE EXPRESSLY GIVEN AS SOUTH CAROLINA STATE PLANE COORDINATES (SCSPC), ZONE 3900, DATUM OF 1983 (2011 ADJUSTMENT), AND DISTANCES SHOWN HEREON ARE SCALED TO GRID. THE SCSPC COMBINED SCALE FACTOR FOR THIS PLAT IS 1.0001343152 AT A LANDSCAPE MAIL W/WASHER BEING FOUND OFF ASAZLEE LANE, NEAR THE COUNTY LINE (SCSPC N: 565,744.44 E: 2,233,428.67).
 - THE ORIENTATION OF THIS PLAT IS SCSPC GRID NORTH, NAD 83, 2011 ADJUSTMENT, ZONE 3900. ALL LINES, DIMENSIONS, AND DISTANCES SHOWN HEREON ARE SCALED TO GRID. THE SCSPC COMBINED SCALE FACTOR FOR THIS PLAT IS 1.0001343152 AT A LANDSCAPE MAIL W/WASHER BEING FOUND OFF ASAZLEE LANE, NEAR THE COUNTY LINE (SCSPC N: 565,744.44 E: 2,233,428.67).

LEGEND

- EXISTING COUNTY LINE RUNNING ALONG THE CURRENT R/W
- EXISTING COUNTY LINE (BY TITLE &/or MONUMENTATION)
- BOUNDARY LINE (C.O.M., R.O.N., R/W)
- SHEET BORDER
- THE LINE
- MATCH LINE BETWEEN PLAT SHEETS
- WATER EDGE
- IRON PIN OR PIPE FOUND (I.P.F. OR I.P.P. SIZE & TYPE NOTED)
- STONE FOUND (TYPICALLY AN IRREGULAR MASS; APPROXIMATE DIMENSIONS OF TOP PORTION/AREA OF STONE NOTED)
- CONCRETE MONUMENT FOUND (C.M.F. OR C.M.P.; SIZE/DIMENSIONS NOTED)
- COMPUTED POINT; NO MONUMENT FOUND &/or SET
- COUNTY LINE CORNER IDENTIFIER
- IRON PIN SET (I.P.S.) - #8 R.B. w/3-1/4" S.C.G.S.
- ALUMINUM CAP SET (UNLESS NOTED OTHERWISE)
- MAG NAIL & WASHER SET - "COUNTY BOUNDARY MONUMENT"
- IRON REINFORCING BAR (REBAR)
- OPEN TOP IRON PIPE or PIN
- CRIMP TOP IRON PIPE or PIN
- PINCH TOP IRON PIPE or PIN
- ABOVE GROUND LEVEL
- REGISTER of MESSE CONVEYANCE
- REGISTER of DEEDS
- BOOK/PAGE
- DEED BOOK/PAGE
- PLAT BOOK/PAGE
- TAX MAP SYSTEM (COUNTY PARCEL IDENTIFICATION)
- CENTER LINE
- INTERSECTION POINT / POINT OF INTERSECTION
- COMPUTED POINT
- CHORD
- SOUTH CAROLINA GEODETIC SURVEY
- ANNEXATION
- SOUTH CAROLINA DEPARTMENT OF TRANSPORTATION
- DOCKET
- PAGE
- MATCHLINE
- NORTH AMERICA DATUM of 1983 (2011 Adjustment)
- NORTHING/EASTING SCSPC COORDINATES
- SOUTH CAROLINA STATE PLANE COORDINATE (SYSTEM); ZONE 3900; IFL

-
-
- ▲
- (A), 'A'
-
- M.N. & W.S.
- R.B. or R.B.
- O.T. or OT
- C.T. or CT
- P.T. or PT
- A.G.L.
- R.M.C.
- R.O.D.
- B.K./P.G.
- D.B./P.G.
- P.B./P.G.
- P.C./S.L.
- T.M.S.
- C/L
- F.I.
- C.P.
- CHD.
- S.C.G.S.
- ANNEX.
- SCDDT
- DKT.
- Pg.
- ML or M.L.
- NAD 83
- N/E:
- SCSPC



BERKELEY-ORANGEBURG COUNTY LINE

A PLAT OF A PORTION OF THE

STARTING AT THE INTERSECTION OF

'LITTLE BLACK CREEK' WITH COUNTY LINE ROAD (S-8-59), THEN RUNNING NORTHERLY ALONG

THE CENTERLINE OF COUNTY LINE ROAD (S-8-59) UP TO & CROSSING OVER OLD

HIGHWAY 6 (SC 6), THEN RUNNING NORTH AND EAST BETWEEN AND THROUGH SEVERAL LAND

PARCELS TO A CALCULATED POINT IN 'LAKE MARION' WITH A NOTATION OF THE LINE CONTINUING TO

THE 'OLD SANTEE RIVER' (NOW SUBMERGED UNDER 'LAKE MARION') AND THE CLARENDON COUNTY LINE

Date of Map:
5/18/2021

Drawn: AWK
Design: AWK
Checked: RDB
Approved: RDB

CAD File: 19028 BERK-ORANG.dwg
F.B. & Pg. _____
P.B. & Pg. _____
Pl. Board Appl. # _____

Date	Revision No.

Proj. No.: 19028
Sheet 1 of 7

This is not a valid, true copy of this document unless bearing on the original signature, signature date, and the raised, embossed seal of the surveyor or engineer.

Copyright 2022, CORNERSTONE SURVEYING & ENGINEERING, INC. All rights reserved. Reproduction or use of this document, in whole or in part, without permission is prohibited.

Print No. _____
Date: ____/____/____

CORNERSTONE SURVEYING & ENGINEERING, INC.

1240 Becons Bridge Rd. • Summerville • South Carolina • 29485 • Phone: 843-871-9706

I HEREBY STATE THAT TO THE BEST OF MY PROFESSIONAL KNOWLEDGE, INFORMATION, AND BELIEF, THE SURVEY SHOWN HEREON WAS MADE IN ACCORDANCE WITH THE REQUIREMENTS OF THE 'STANDARDS OF PRACTICE MANUAL FOR SURVEYING IN SOUTH CAROLINA' (EFFECTIVE JUNE 26, 2009), AS PER ARTICLE 4, REGULATION 49-420 F., THAT THIS MAP OR PLAT IS INTENDED ONLY TO SHOW INFORMATION SURVEYED FOR A SPECIFIC STATED PURPOSE; THAT SURVEY LINES SHOWN HEREON ARE BASED ON ACTUAL FIELD SURVEY EVIDENCE AND/OR MEASUREMENTS WHICH MEET OR EXCEED THE REQUIREMENTS FOR A CLASS 'A' SURVEY AS SPECIFIED THEREIN.

NOT VALID UNLESS SIGNED IN RED INK

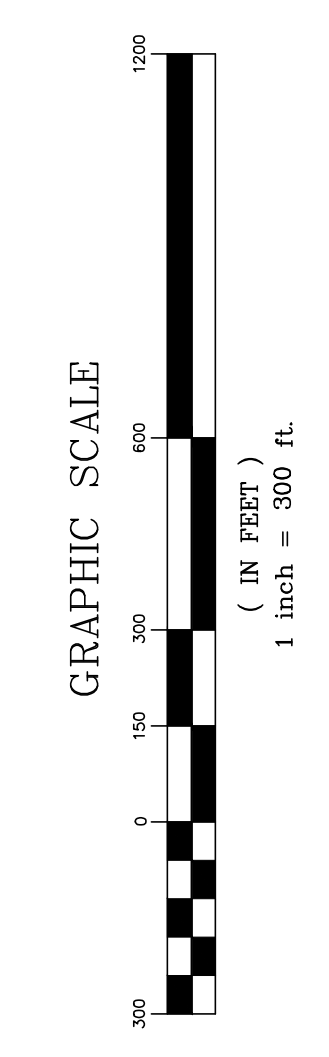
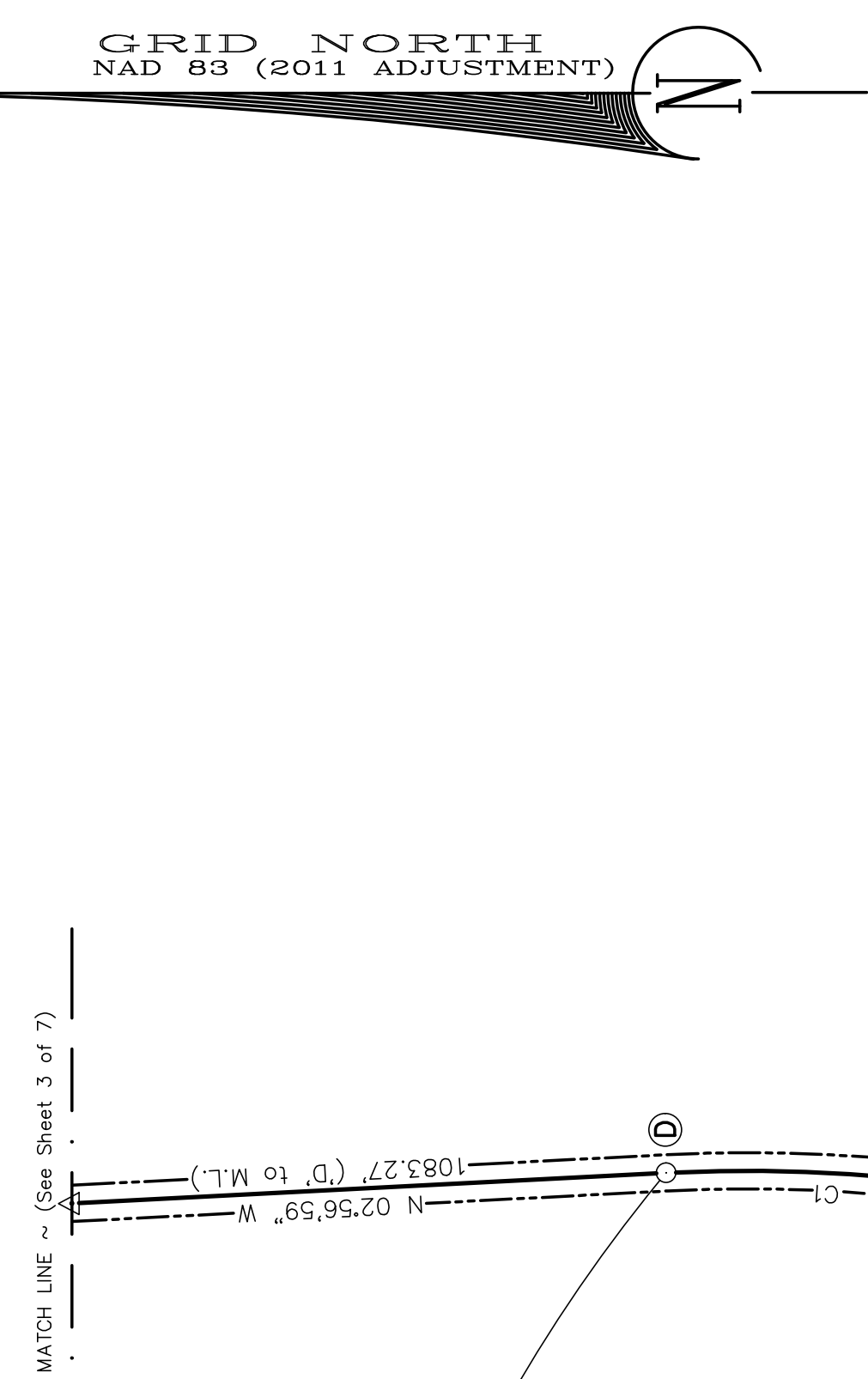
R. David Branton
12/11/2022

C.O.A. STAMP EMBOSSED SEAL

CURVE TABLE (EXISTING COUNTY LINE)
 Curve # Length Radius Tangent Delta Chd. Length Chd. Direction
 C1 587.98' 2874.46' 295.02' 11°43'12" 586.96' N 02°54'37" E

COUNTY LINE MONUMENT SUMMARY TABLE -- NAD 83 (2011 Adjustment)

Monument	Northing (ft.)	Easting (ft.)	Description	Latitude (North)	Longitude (West)
'A'	534454.66	2227989.98	MAG & WASHER	33-22-59.1067	080-14-29.6905
'B'	536190.67	2228231.04	MAG & WASHER	33-18-17.2121	080-15-10.4197
'C'	537616.26	2228450.98	MAG & WASHER	33-18-31.3026	080-15-07.7063
'D'	538202.46	2228480.78	MAG & WASHER	33-18-37.1010	080-15-07.3052
'E'	541533.66	2228309.12	MAG & WASHER	33-19-10.0755	080-15-09.0442
'F'	544383.29	2228630.02	MAG & WASHER	33-19-18.4667	080-15-06.3682
'G'	544180.62	2229657.35	MAG & WASHER	33-19-36.1704	080-14-52.9269
'H'	545041.12	2229876.80	MAG & WASHER	33-19-44.6692	080-14-50.2664
'J'	546894.56	2229763.98	MAG & WASHER	33-20-03.0171	080-14-51.4372
'K'	548205.88	2229666.85	MAG & WASHER	33-20-16.0000	080-14-52.4700
'L'	549112.53	2229907.50	MAG & WASHER	33-20-24.9536	080-14-49.5549
'M'	549953.06	2230473.71	MAG & WASHER	33-20-33.2298	080-14-42.8075
'N'	550396.44	2230679.94	MAG & WASHER	33-20-37.6021	080-14-40.3380
'P'	550974.27	2230844.81	MAG & WASHER	33-20-43.3078	080-14-38.3445
'O'	551522.29	2231068.95	MAG & WASHER	33-20-48.7142	080-14-35.6547
'R'	552009.67	2231334.28	MAG & WASHER	33-20-53.5176	080-14-32.4843
'S'	552342.12	2231548.32	MAG & WASHER	33-20-58.7917	080-14-29.9321
'T'	552810.34	2231894.59	MAG & WASHER	33-21-01.3895	080-14-25.8090
'U'	553852.00	2232153.92	MAG & WASHER	33-21-11.6679	080-14-22.6610
'V'	554247.01	2232098.25	MAG & WASHER	33-21-15.6001	080-14-23.2852
'W'	554645.35	2232098.04	MAG & WASHER	33-21-19.5421	080-14-23.2511
'X'	556127.61	2232305.32	MAG & WASHER	33-21-34.1940	080-14-20.7884
'Y'	556698.77	2232327.63	MAG & WASHER	33-21-39.8440	080-14-20.3657
'Z'	557123.36	2232301.75	MAG & WASHER	33-21-44-0472	080-14-20.6340
'AA'	558200.96	2232140.54	MAG & WASHER	33-21-50.5879	080-14-22.4777
'AB'	558802.36	2231954.80	MAG & WASHER	33-21-54.7352	080-14-24.6318
'AD'	559717.45	2231843.73	MAG & WASHER	33-22-09.7490	080-14-25.8101
'AE'	560414.18	2231890.39	MAG & WASHER	33-22-16.6397	080-14-25.1995
'AF'	561387.15	2231663.06	MAG & WASHER	33-22-26.2837	080-14-27.7961
'AG'	562211.03	2231426.76	MAG & WASHER	33-22-34.4532	080-14-30.5116
'AH'	564702.94	2231478.09	MAG & WASHER	33-22-59.4672	080-14-29.6900
'AJ'	564739.36	2231477.96	MAG & WASHER	33-22-59.4672	080-14-29.6900
'AK'	565422.08	2231497.09	COUNTY MONUMENT DISK	33-23-08.2214	080-14-29.4042
'AL'	567203.03	2231936.98	1" OPEN TOP	33-23-23.8117	080-14-24.0613
'AM'	567906.67	2232123.65	2" OPEN TOP	33-23-30.7507	080-14-21.7984
'AN'	568525.90	2232480.19	2" OPEN TOP	33-23-04.5474	080-13-57.1484
'AP'	565211.94	2232480.17	1" SQUARE SHAFT	33-23-03.6945	080-13-49.5192
'AQ'	567939.00	22327210.53	COUNTY MONUMENT DISK	33-23-30.8727	080-13-48.3362
'AR'	567906.51	2232710.53	1" AXLE	33-23-30.3845	080-13-21.7942
'AS'	572722.08	2232500.47	CALCULATED POINT	33-24-18.0127	080-13-17.9463
'AT'	574558.30	2236598.03	CALCULATED POINT	33-24-36.2491	080-13-28.4305
	575280.04	2236519.50	CALCULATED POINT	33-24-43.3965	080-13-29.2931



A PLAT OF A PORTION OF THE
BERKELEY-ORANGEBURG COUNTY LINE
 STARTING AT THE INTERSECTION OF
 'LITTLE BLACK CREEK' WITH COUNTY LINE ROAD (S-8-59), THEN RUNNING NORTHERLY ALONG
 THE CENTERLINE OF COUNTY LINE ROAD (S-8-59) UP TO & CROSSING OVER OLD
 HIGHWAY 6 (SC 6), THEN RUNNING NORTH AND EAST BETWEEN AND THROUGH SEVERAL LAND
 PARCELS TO A CALCULATED POINT IN 'LAKE MARION' WITH A NOTATION OF THE LINE CONTINUING TO
 THE 'OLD SANTEE RIVER' (NOW SUBMERGED UNDER 'LAKE MARION') AND THE CLARENDON COUNTY LINE

Date of Map: 5/18/2021
 Drawn: AWK
 Design: AWK
 Checked: RDB
 Approved: RDB
 CAD File: 19028 BERK-ORANG.dwg
 F.B. & Pg. _____
 P.B. & Pg. _____
 Pl.Board Appl.# _____

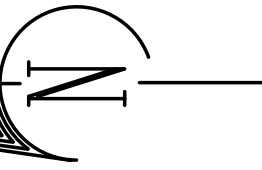
Date	Revision No.

Proj. No.: 19028
 Sheet 2 of 7

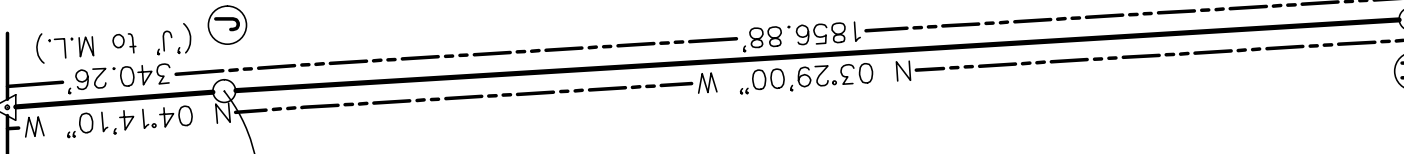
CORNERSTONE
 SURVEYING & ENGINEERING, INC.
 1240 Bocons Bridge Rd. • Summerville • South Carolina • 29485 • Phone: 843-871-9706

This is not a valid, true copy of the document unless bearing on the original document and the embossed seal of the surveyor or engineer.
 Copyright 2022, CORNERSTONE SURVEYING & ENGINEERING, INC. All rights reserved. Reproduction or use of this document, in whole or in part, without permission is prohibited.
 Print No. _____
 Date: _____

GRID NORTH
NAD 83 (2011 ADJUSTMENT)



MATCH LINE ~ (See Sheet 4 of 7)



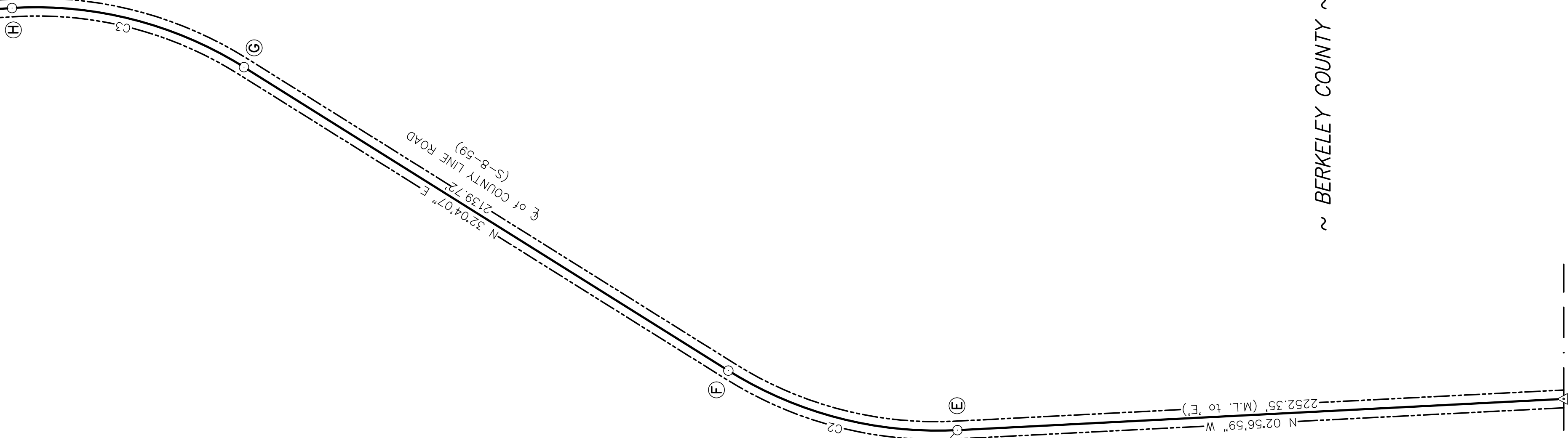
COUNTY LINE MONUMENT
SET (MAG NAIL WITH WASHER)
N: 546,984.56
E: 2,229,763.98
SCSPC NAD 83 (2011 Adj.)

~ ORANGEBURG COUNTY ~

CURVE TABLE (EXISTING COUNTY LINE)

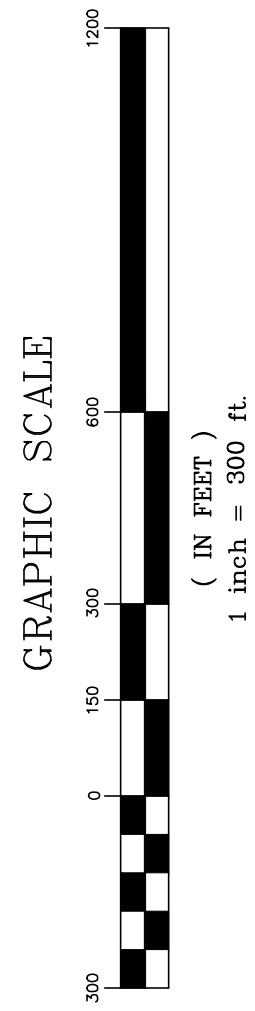
Curve #	Length	Radius	Tangent	Delta	Chd. Length	Chd. Direction
C2	891.72'	1457.81'	460.30'	35°02'49"	877.88'	N 14°34'25" E
C3	902.47'	1453.26'	466.32'	35°34'49"	886.04'	N 14°18'29" E

~ BERKELEY COUNTY ~



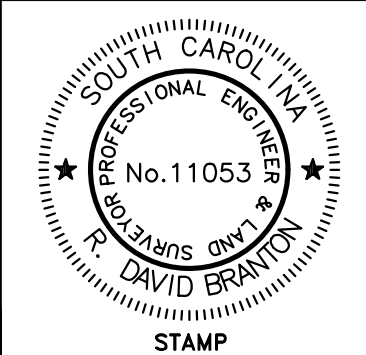
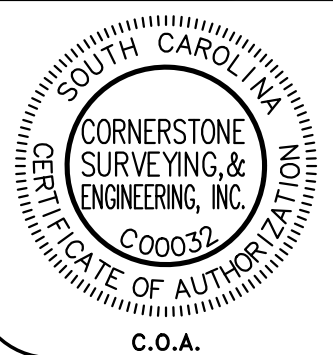
~ BERKELEY COUNTY ~

~ ORANGEBURG COUNTY ~



NOTE:
FOR ADDITIONAL NOTES SEE SHEET 1.

I HEREBY STATE THAT TO THE BEST OF MY PROFESSIONAL KNOWLEDGE, INFORMATION, AND BELIEF, THE SURVEY SHOWN HEREON WAS MADE IN ACCORDANCE WITH THE REQUIREMENTS OF THE 'STANDARDS OF PRACTICE MANUAL FOR SURVEYING IN SOUTH CAROLINA' (EFFECTIVE JUNE 26, 2009), AS PER ARTICLE 4, REGULATION 49-420 F., THAT THIS MAP OR PLAT IS INTENDED ONLY TO SHOW INFORMATION SURVEYED FOR A SPECIFIC STATED PURPOSE; THAT SURVEY LINES SHOWN HEREON ARE BASED ON ACTUAL FIELD SURVEY EVIDENCE AND/OR MEASUREMENTS WHICH MEET OR EXCEED THE REQUIREMENTS FOR A CLASS 'A' SURVEY AS SPECIFIED THEREIN.



NOT VALID UNLESS
SIGNED IN RED INK

12-1-2022

This is not a valid, true copy of this document unless bearing an embossed seal of the surveyor or engineer.
© Copyright 2022, CORNERSTONE SURVEYING & ENGINEERING, INC. All rights reserved. Reproduction or use of this document, in whole or in part, without permission is prohibited.
Print No. _____
Date: ____/____/____

CORNERSTONE
SURVEYING & ENGINEERING, INC.
1240 Bacons Bridge Rd. • Summerville • South Carolina • 29485 • Phone: 843-871-9706

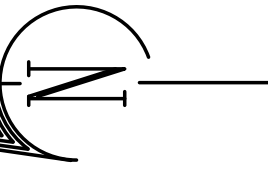
A PLAT OF A PORTION OF THE
BERKELEY-ORANGEBURG COUNTY LINE
STARTING AT THE INTERSECTION OF
'LITTLE BLACK CREEK' WITH COUNTY LINE ROAD (S-8-59), THEN RUNNING NORTHERLY ALONG THE CENTERLINE OF COUNTY LINE ROAD (S-8-59) UP TO & CROSSING OVER OLD HIGHWAY 6 (SC 6), THEN RUNNING NORTH AND EAST BETWEEN AND THROUGH SEVERAL LAND PARCELS TO A CALCULATED POINT IN 'LAKE MARION' WITH A NOTATION OF THE LINE CONTINUING TO THE 'OLD SANTEE RIVER' (NOW SUBMERGED UNDER 'LAKE MARION') AND THE CLARENDON COUNTY LINE

Date of Map:
5/18/2021
 Drawn: AWK
 Design: AWK
 Checked: RDB
 Approved: RDB
CAD File: 19028 BERK-ORANG.dwg
F.B. & Pg. _____
P.B. & Pg. _____
Pl. Board Appl. # _____

Date	Revision No.

Proj. No.: 19028
Sheet 3 of 7

GRID NORTH
NAD 83 (2011 ADJUSTMENT)

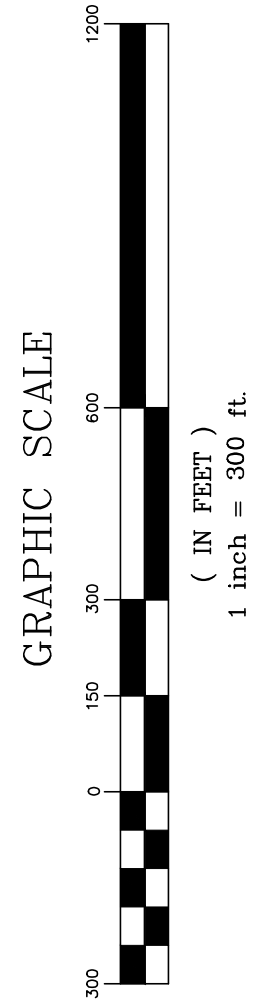


~ BERKELEY COUNTY ~

~ ORANGEBURG COUNTY ~

~ BERKELEY COUNTY ~

~ ORANGEBURG COUNTY ~



NOTE:
FOR 'ADDITIONAL NOTES' SEE SHEET 1.

COUNTY LINE MONUMENT
SET (MAG NAIL WITH WASHER)
N: 554.645.35
E: 2,232.098.04
SCSPC NAD 83 (2011 Adj.)

COUNTY LINE MONUMENT
SET (MAG NAIL WITH WASHER)
N: 548.205.88
E: 2,229.666.85
SCSPC NAD 83 (2011 Adj.)

CURVE TABLE (EXISTING COUNTY LINE)

Curve #	Length	Radius	Tangent	Delta	Chd. Length	Chd. Direction
C4	955.65'	1433.30'	496.35'	3812.07"	938.05'	N 14°51'53" E
C5	491.03'	1599.40'	247.56'	1802.29"	489.00'	N 24°56'42" E
C6	593.29'	2689.40'	297.85'	1238.23"	592.09'	N 22°14'39" E
C7	395.75'	2692.33'	198.23'	6825.19"	395.39'	N 32°46'30" E
C8	582.36'	33230.97'	291.19'	0100.15"	582.35'	N 36°29'02" E
C9	1100.29'	1432.67'	578.88'	4400.12"	1073.45'	N 13°58'49" E
C10	399.63'	1432.67'	201.12'	1558.55"	398.33'	N 00°01'49" W

NOT VALID UNLESS
SIGNED IN RED INK

R. David Brannon

12-1-2022



EMBOSSED SEAL

Date of Map:
5/18/2021

- Drawn: AWK
 - Design: AWK
 - Checked: RDB
 - Approved: RDB
- CAD File: 19028 BERK-ORANG.dwg
F.B. & Pg. _____
P.B. & Pg. _____
Pl. Board Appl. # _____

Date _____ Revision No. _____

Proj. No.: 19028

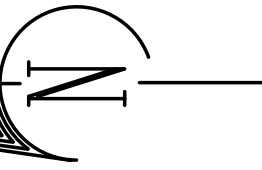
Sheet 4 of 7

BERKELEY-ORANGEBURG COUNTY LINE
A PLAT OF A PORTION OF THE
STARTING AT THE INTERSECTION OF
'LITTLE BLACK CREEK' WITH COUNTY LINE ROAD (S-8-59), THEN RUNNING NORTHERLY ALONG
THE CENTERLINE OF COUNTY LINE ROAD (S-8-59) UP TO & CROSSING OVER OLD
HIGHWAY 6 (SC 6), THEN RUNNING NORTH AND EAST BETWEEN AND THROUGH SEVERAL LAND
PARCELS TO A CALCULATED POINT IN 'LAKE MARION' WITH A NOTATION OF THE LINE CONTINUING TO
THE 'OLD SANTEE RIVER' (NOW SUBMERGED UNDER 'LAKE MARION') AND THE CLARENDON COUNTY LINE

CORNERSTONE
SURVEYING & ENGINEERING, INC.
1240 Bocons Bridge Rd. • Summerville • South Carolina • 29485 • Phone: 843-871-9706

This is not a valid, true copy of the document unless bearing on the embossed seal of the surveyor or engineer.
Copyright 2022, CORNERSTONE SURVEYING & ENGINEERING, INC. All rights reserved. Reproduction or use of this document, in whole or in part, without permission is prohibited.
Print No. _____
Date: ____/____/____

GRID NORTH
NAD 83 (2011 ADJUSTMENT)



NOTE:
FOR ADDITIONAL NOTES SEE SHEET 1.

MATCH LINE ~ (See Sheet 6 of 7)

MATCH LINE ~ (See Sheet 4 of 7)

~ ORANGEBURG COUNTY ~

~ BERKELEY COUNTY ~

~ ORANGEBURG COUNTY ~

~ BERKELEY COUNTY ~

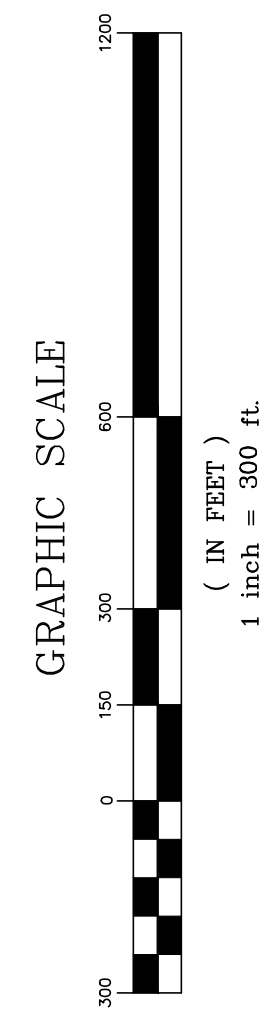
COUNTY LINE MONUMENT
SET (MAG NAIL WITH WASHER)
N: 2027.42936
E: 2327.42936
SCSPC NAD 83 (2011 Adj.)

COUNTY LINE MONUMENT
SET (MAG NAIL WITH WASHER)
N: 556.127.61
E: 2,232.305.32
SCSPC NAD 83 (2011 Adj.)

☉ of COUNTY LINE ROAD (S-8-59)

CURVE TABLE (EXISTING COUNTY LINE)

Curve #	Length	Radius	Tangent	Delta	Chd. Length	Chd. Direction
C11	572.55'	2865.34'	287.23'	11°26'56"	571.60'	N 02°14'11" E
C12	682.87'	1910.23'	345.12'	20°28'55"	679.24'	N 13°43'45" W
C13	618.73'	1432.67'	314.26'	24°44'39"	613.93'	N 11°35'53" W
C14	698.62'	6547.93'	349.64'	06°06'47"	698.29'	N 03°49'50" E
C15	1019.84'	1455.06'	531.78'	40°04'31"	999.18'	N 13°09'02" W
C16	870.08'	1450.52'	448.57'	34°22'06"	857.09'	N 16°00'14" W



I HEREBY STATE THAT TO THE BEST OF MY PROFESSIONAL KNOWLEDGE, INFORMATION, AND BELIEF, THE SURVEY SHOWN HEREON WAS MADE IN ACCORDANCE WITH THE REQUIREMENTS OF THE 'STANDARDS OF PRACTICE MANUAL FOR SURVEYING IN SOUTH CAROLINA' (EFFECTIVE JUNE 26, 2009), AS PER ARTICLE 4, REGULATION 49-420 F., THAT THIS MAP OR PLAT IS INTENDED ONLY TO SHOW INFORMATION SURVEYED FOR A SPECIFIC STATED PURPOSE; THAT SURVEY LINES SHOWN HEREON ARE BASED ON ACTUAL FIELD SURVEY EVIDENCE AND/OR MEASUREMENTS WHICH MEET OR EXCEED THE REQUIREMENTS FOR A CLASS 'A' SURVEY AS SPECIFIED THEREIN.

DAVID BRANTON
No. 11053
PROFESSIONAL ENGINEER
STATE OF SOUTH CAROLINA

NOT VALID UNLESS
SIGNED IN RED INK

D. Branton

12-1-2022

This is not a valid, true copy of this document unless bearing on embossed seal of the surveyor or engineer.
 Copyright 2022, CORNERSTONE SURVEYING & ENGINEERING, INC. All rights reserved. Reproduction or use of this document, in whole or in part, without permission is prohibited.
 Print No. _____
 Date: ____/____/____

CORNERSTONE
SURVEYING & ENGINEERING, INC.
 1240 Bocons Bridge Rd. • Summerville • South Carolina • 29485 • Phone: 843-871-9706

BERKELEY-ORANGEBURG COUNTY LINE
 A PLAT OF A PORTION OF THE
 STARTING AT THE INTERSECTION OF
 'LITTLE BLACK CREEK' WITH COUNTY LINE ROAD (S-8-59), THEN RUNNING NORTHERLY ALONG THE CENTERLINE OF COUNTY LINE ROAD (S-8-59) UP TO & CROSSING OVER OLD HIGHWAY 6 (SC 6), THEN RUNNING NORTH AND EAST BETWEEN AND THROUGH SEVERAL LAND PARCELS TO A CALCULATED POINT IN 'LAKE MARION' WITH A NOTATION OF THE LINE CONTINUING TO THE 'OLD SANTEE RIVER' (NOW SUBMERGED UNDER 'LAKE MARION') AND THE CLARENDON COUNTY LINE

Date of Map: 5/18/2021
 Drawn: AWK
 Design: AWK
 Checked: RDB
 Approved: RDB
 CAD File: 19028 BERK-ORANG.dwg
 F.B. & Pg. _____
 P.B. & Pg. _____
 Pl. Board Appl. # _____

Date	Revision No.

Proj. No.: 19028
 Sheet 5 of 7

This is not a valid, true copy of this document unless bearing on the embossed seal of the surveyor or engineer.
 © Copyright 2022, CORNERSTONE SURVEYING & ENGINEERING, INC. All rights reserved. Reproduction or use of this document, in whole or in part, without permission is prohibited.
 Print No. _____
 Date: _____

CORNERSTONE SURVEYING & ENGINEERING, INC.
 1240 Bocons Bridge Rd. • Summerville • South Carolina • 29485 • Phone: 843-871-9706

A PLAT OF A PORTION OF THE
BERKELEY-ORANGEBURG COUNTY LINE
 STARTING AT THE INTERSECTION OF
 'LITTLE BLACK CREEK' WITH COUNTY LINE ROAD (S-8-59), THEN RUNNING NORTHERLY ALONG
 THE CENTERLINE OF COUNTY LINE ROAD (S-8-59) UP TO & CROSSING OVER OLD
 HIGHWAY 6 (SC 6), THEN RUNNING NORTH AND EAST BETWEEN AND THROUGH SEVERAL LAND
 PARCELS TO A CALCULATED POINT IN 'LAKE MARION' WITH A NOTATION OF THE LINE CONTINUING TO
 THE 'OLD SANTEE RIVER' (NOW SUBMERGED UNDER 'LAKE MARION') AND THE CLARENDON COUNTY LINE

Date of Map: 5/18/2021
 Drawn: AWK
 Design: AWK
 Checked: RDB
 Approved: RDB
 CAD File: 19028 BERK-ORANG.dwg
 F.B. & Pg. _____
 P.B. & Pg. _____
 Pl. Board Appl. # _____
 Date _____ Revision No. _____
 Proj. No.: 19028
 Sheet 6 Of 7

NOTE:
 FOR 'ADDITIONAL NOTES' SEE SHEET 1.

MATCH LINE (See Sheet 7 of 7)

~ ORANGEBURG COUNTY ~

~ BERKELEY COUNTY ~

~ ORANGEBURG COUNTY ~

~ ORANGEBURG COUNTY ~

~ BERKELEY COUNTY ~

~ ORANGEBURG COUNTY ~

~ BERKELEY COUNTY ~

INSET 'C'
 (NOT TO SCALE)

INSET 'B'
 (NOT TO SCALE)

COUNTY LINE MONUMENT SET (#8 RBR W/ ALUM CAP)
 N: 567,906.51
 E: 2,737,210.53
 SCSPC NAD 83 (2011 Adj.)

REMAINDER OF COUNTY LINE IS REFERENCED ON SECTION 4-3-80; MONUMENTS WERE UNABLE TO BE FOUND/SET DUE TO BEING 'INACCESSIBLE'/SUBMERGED.

COUNTY LINE MONUMENT FOUND (2" ANGLE IRON)
 N: 564,739.36
 E: 2,231,477.96
 SCSPC NAD 83 (2011 Adj.)

LINE TABLE (EXISTING COUNTY LINE)

Line #	Length	Direction
L1	36.43'	N 00°13'18" W
L2	0.31'	S 66°57'27" W

GRID NORTH
 NAD 83 (2011 ADJUSTMENT)

I HEREBY STATE THAT TO THE BEST OF MY PROFESSIONAL KNOWLEDGE, INFORMATION, AND BELIEF, THE SURVEY SHOWN HEREON WAS MADE IN ACCORDANCE WITH THE REQUIREMENTS OF THE 'STANDARDS OF PRACTICE MANUAL FOR SURVEYING IN SOUTH CAROLINA' (EFFECTIVE JUNE 26, 2009), AS PER ARTICLE 4, REGULATION 49-420 F., THAT THIS MAP OR PLAT IS INTENDED ONLY TO SHOW INFORMATION SURVEYED FOR A SPECIFIC STATED PURPOSE; THAT SURVEY LINES SHOWN HEREON ARE BASED ON ACTUAL FIELD SURVEY EVIDENCE AND/OR MEASUREMENTS WHICH MEET OR EXCEED THE REQUIREMENTS FOR A CLASS 'A' SURVEY AS SPECIFIED THEREIN.

NOT VALID UNLESS SIGNED IN RED INK

R. David Brantton

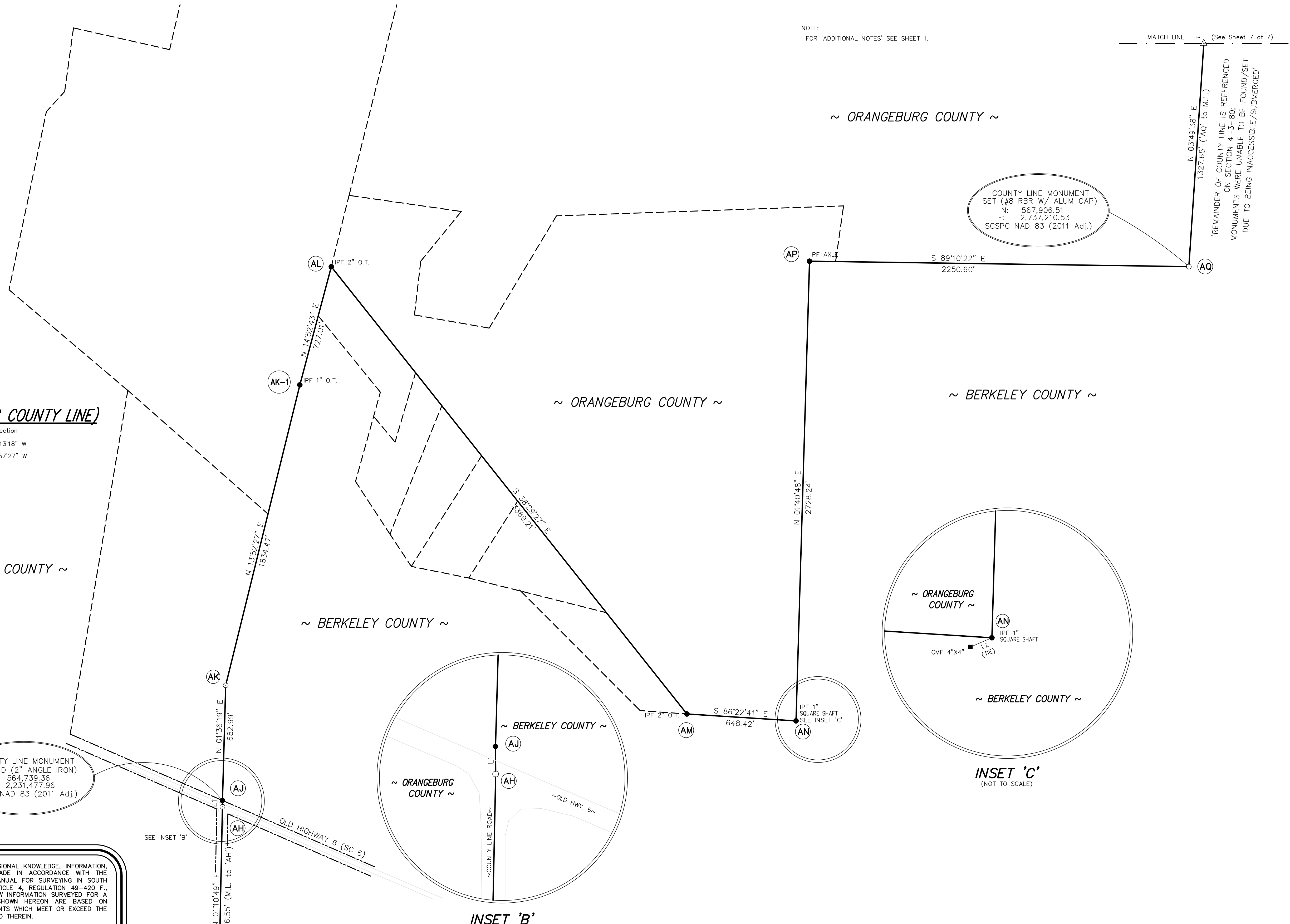
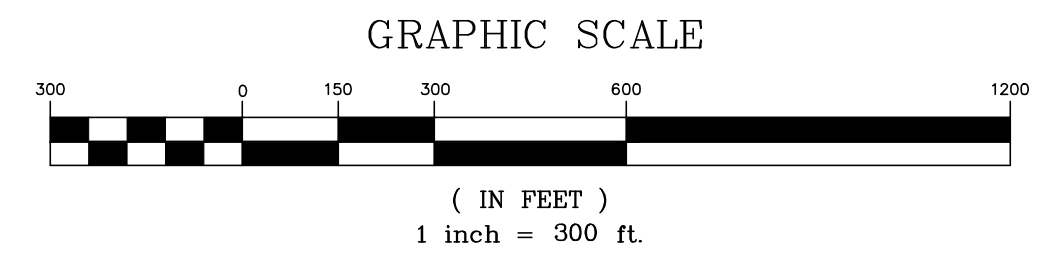
12-1-2022

SOUTH CAROLINA PROFESSIONAL ENGINEER No. 11053 R. DAVID BRANTTON

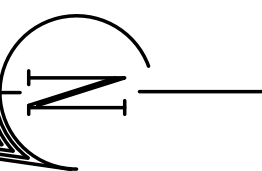
CORNERSTONE SURVEYING & ENGINEERING, INC. C00037

C.O.A. STAMP EMBOSSED SEAL

MATCH LINE (See Sheet 5 of 7)



GRID NORTH
NAD 83 (2011 ADJUSTMENT)



NOTE:
FOR ADDITIONAL NOTES SEE SHEET 1.

COUNTY LINE CONTINUES TO OLD SANTEE RIVER.

COUNTY LINE MONUMENT
(CALCULATED POINT)
N: 575.280,000
E: 2,236.519,50
SCSFC NAD 83 (2011 Adj.)

726.00' N 06°12'35" W

AU

N 26°10'22" W

AT

~LAKE MARION~

~ BERKELEY COUNTY ~

2046.00' N 26°10'22" W

~ ORANGEBURG COUNTY ~

AS

~LAKE MARION~

N 02°19'38" E

AB

REMAINDER OF COUNTY LINE IS REFERENCED ON SECTION 4-3-80. MONUMENTS UNABLE TO BE FOUND/SET DUE TO BEING INACCESSIBLE/SUBMERGED.

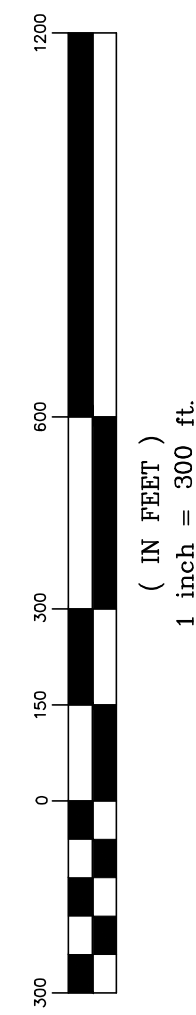
~ BERKELEY COUNTY ~

N 03°49'38" E

~ ORANGEBURG COUNTY ~

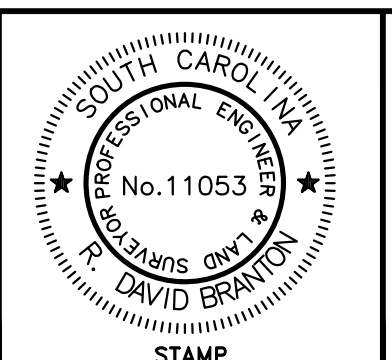
~LAKE MARION~

GRAPHIC SCALE



MATCH LINE ~ (See Sheet 6 of 7)

I HEREBY STATE THAT TO THE BEST OF MY PROFESSIONAL KNOWLEDGE, INFORMATION, AND BELIEF, THE SURVEY SHOWN HEREON WAS MADE IN ACCORDANCE WITH THE REQUIREMENTS OF THE 'STANDARDS OF PRACTICE MANUAL FOR SURVEYING IN SOUTH CAROLINA' (EFFECTIVE JUNE 26, 2009), AS PER ARTICLE 4, REGULATION 49-420 F., THAT THIS MAP OR PLAT IS INTENDED ONLY TO SHOW INFORMATION SURVEYED FOR A SPECIFIC STATED PURPOSE; THAT SURVEY LINES SHOWN HEREON ARE BASED ON ACTUAL FIELD SURVEY EVIDENCE AND/OR MEASUREMENTS WHICH MEET OR EXCEED THE REQUIREMENTS FOR A CLASS 'A' SURVEY AS SPECIFIED THEREIN.



NOT VALID UNLESS
SIGNED IN RED INK

R. D. Bratton

12-1-2022

EMBOSSSED SEAL

This is not a valid, true copy of the document unless bearing on the embossed seal of the surveyor or engineer.

© Copyright 2022, CORNERSTONE SURVEYING & ENGINEERING, INC. All rights reserved. Reproduction or use of this document, in whole or in part, without permission is prohibited.

Print No. _____
Date: ____/____/____

CORNERSTONE
SURVEYING & ENGINEERING, INC.

1240 Bocons Bridge Rd. • Summerville • South Carolina • 29485 • Phone: 843-871-9706

A PLAT OF A PORTION OF THE
BERKELEY-ORANGEBURG COUNTY LINE
STARTING AT THE INTERSECTION OF
'LITTLE BLACK CREEK' WITH COUNTY LINE ROAD (S-8-59), THEN RUNNING NORTHERLY ALONG THE CENTERLINE OF COUNTY LINE ROAD (S-8-59) UP TO & CROSSING OVER OLD HIGHWAY 6 (SC 6), THEN RUNNING NORTH AND EAST BETWEEN AND THROUGH SEVERAL LAND PARCELS TO A CALCULATED POINT IN 'LAKE MARION' WITH A NOTATION OF THE LINE CONTINUING TO THE 'OLD SANTEE RIVER' (NOW SUBMERGED UNDER 'LAKE MARION') AND THE CLARENDON COUNTY LINE

Date of Map:
5/18/2021

Drawn: AWK
Design: AWK
Checked: RDB
Approved: RDB

CAD File: 19028 BERK-ORANG.dwg
F.B. & Pg. _____
P.B. & Pg. _____
Pl.Board Appl.# _____

Date	Revision No.

Proj. No.: 19028
Sheet 7 of 7