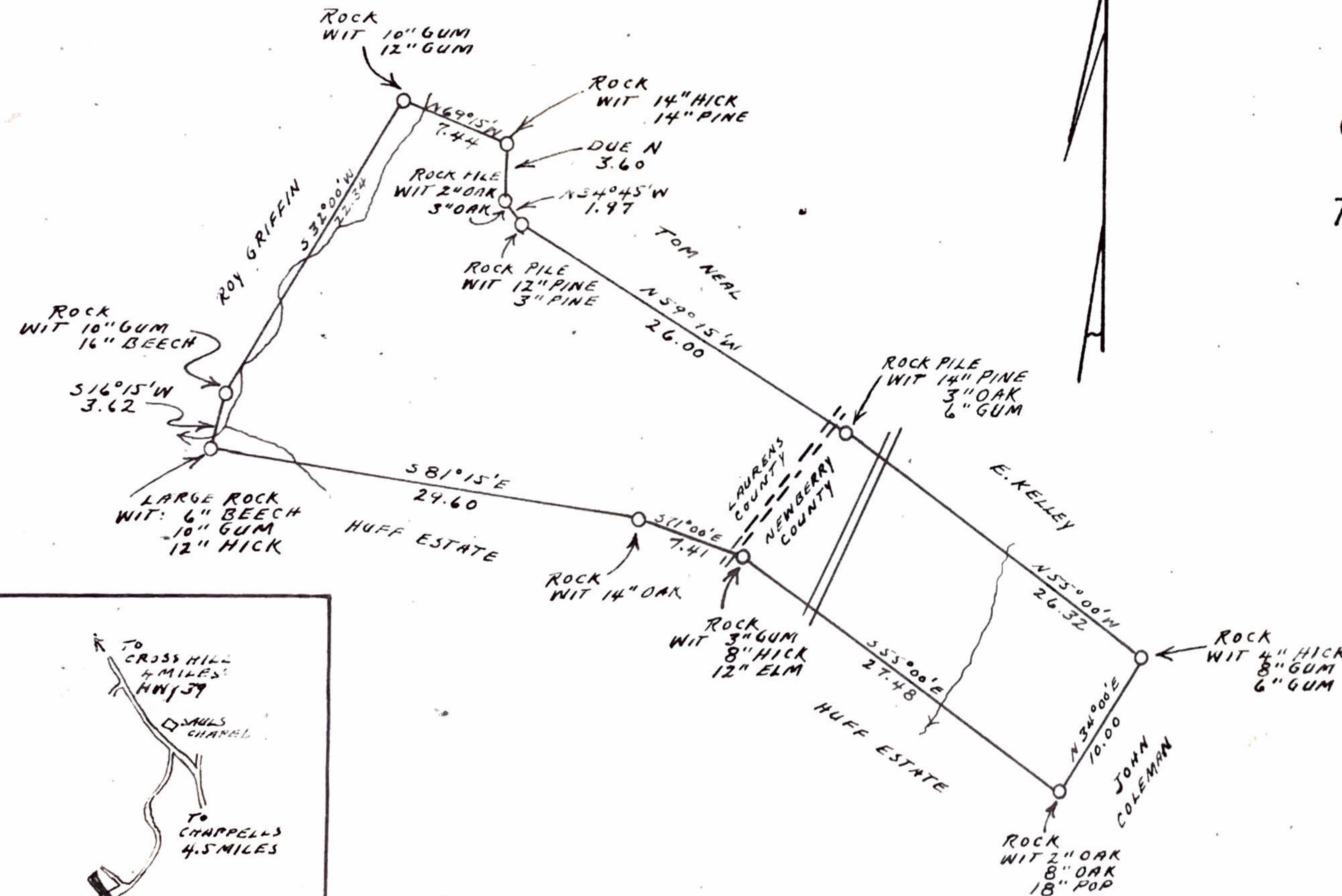


CANAL WOOD CORP'S

LEWIS TRACT

CROSS HILL TWP - LAURENS COUNTY
&
TOWNSHIP NO 7 - NEWBERRY COUNTY

90.8 ACRES



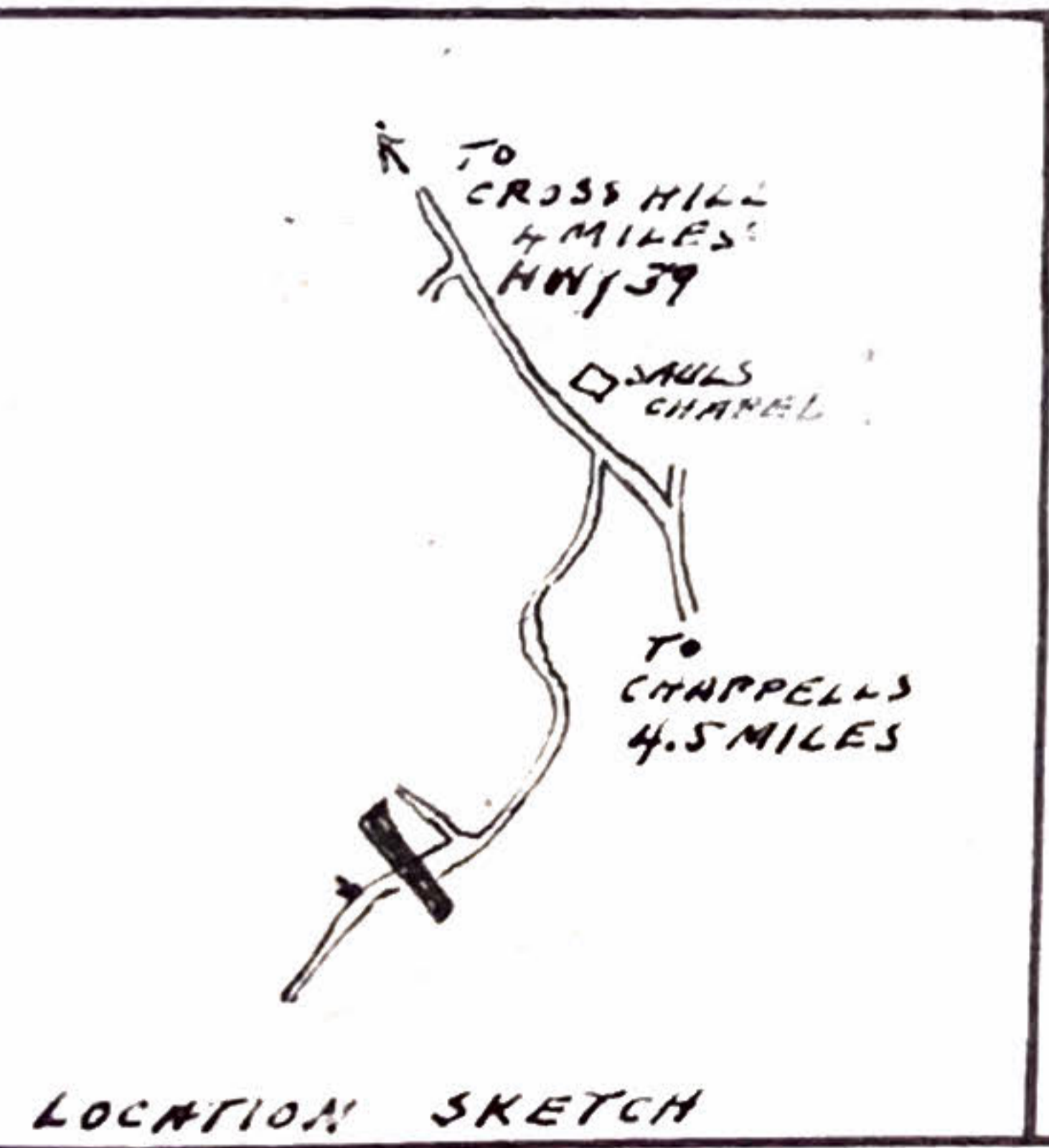
SCALE
1 INCH = 10 CHAINS

- LEGEND
- CORNER & BOUNDARY
 - ≡≡≡ UNIMPROVED ROAD
 - ==== COUNTY ROAD
 - ← STREAM

I CERTIFY THAT I SURVEYED THIS PROPERTY ON OCT. 31 & NOV. 1, 4, 5, & 6, 1946 AND THAT I COMPLETED THIS PLAT ON NOV. 11, 1946.

John S. Howden

NOTE
66.8 ACRES IN LAURENS COUNTY
23.2 ACRES IN NEWBERRY COUNTY
.8 ACRES IN ROAD



LOCATION SKETCH