

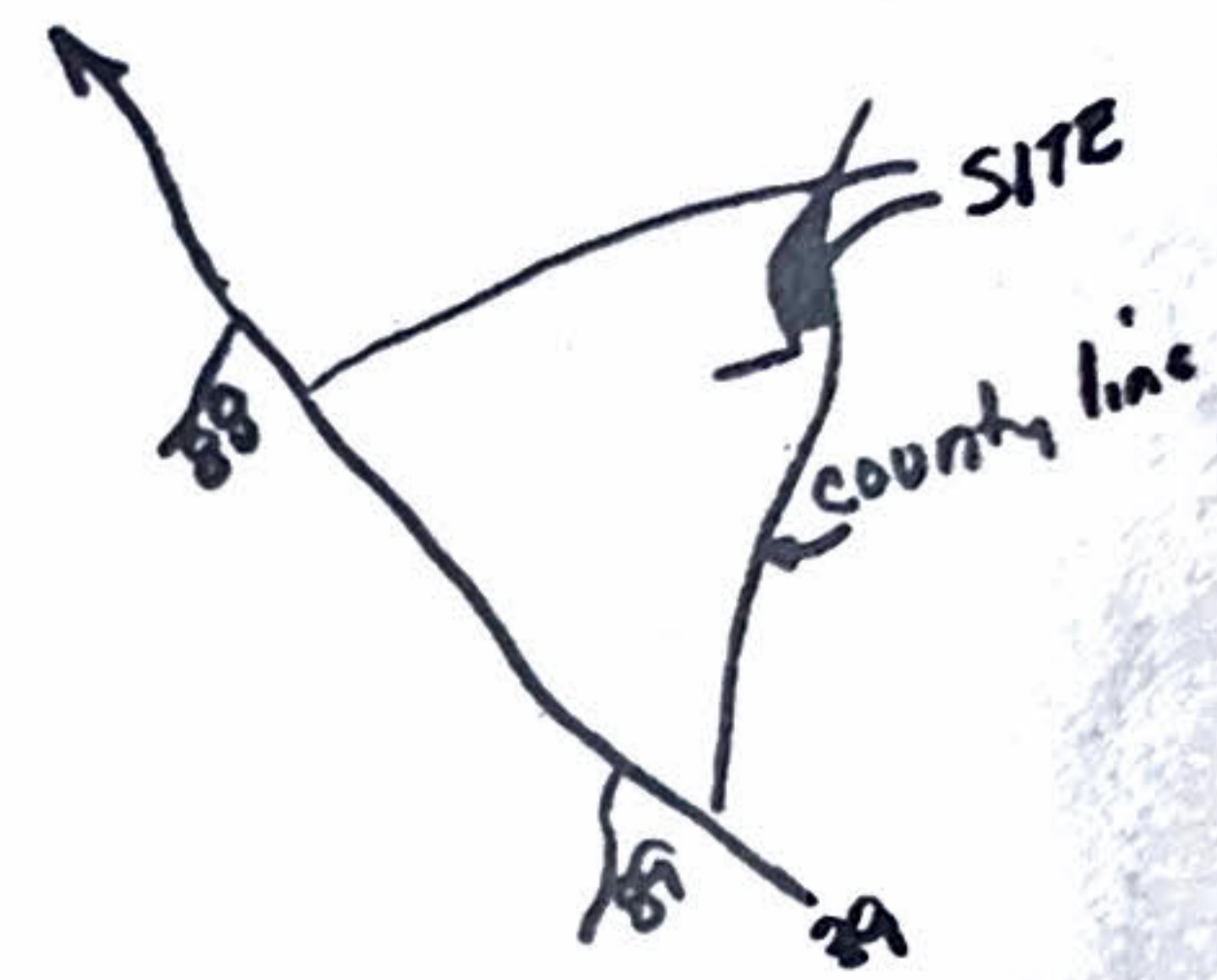
PJK

LINE	BEARING	DISTANCE
L1	N 13° 45' 00" E	188.00
L2	N 27° 18' 50" E	34.84
L3	S 8° 28' 52" W	98.88
L4	S 0° 11' 30" E	75.82
L5	S 84° 04' 28" W	104.57
L6	S 71° 08' 41" W	150.30
L7	S 58° 58' 14" W	87.87
L8	S 43° 08' 52" W	87.81
L9	S 35° 10' 07" W	216.82
L10	N 2° 28' 25" E	20.00

FILED
NEWBERRY COUNTY
DEC 22 2 21 PM '88
ELLOUCE S. SETZLER
CLERK OF COURT

CROSS HILL

Magnetic North ref by Plat dated
1-07-88 for LIBERTY LIFE INSURANCE
COMPANY

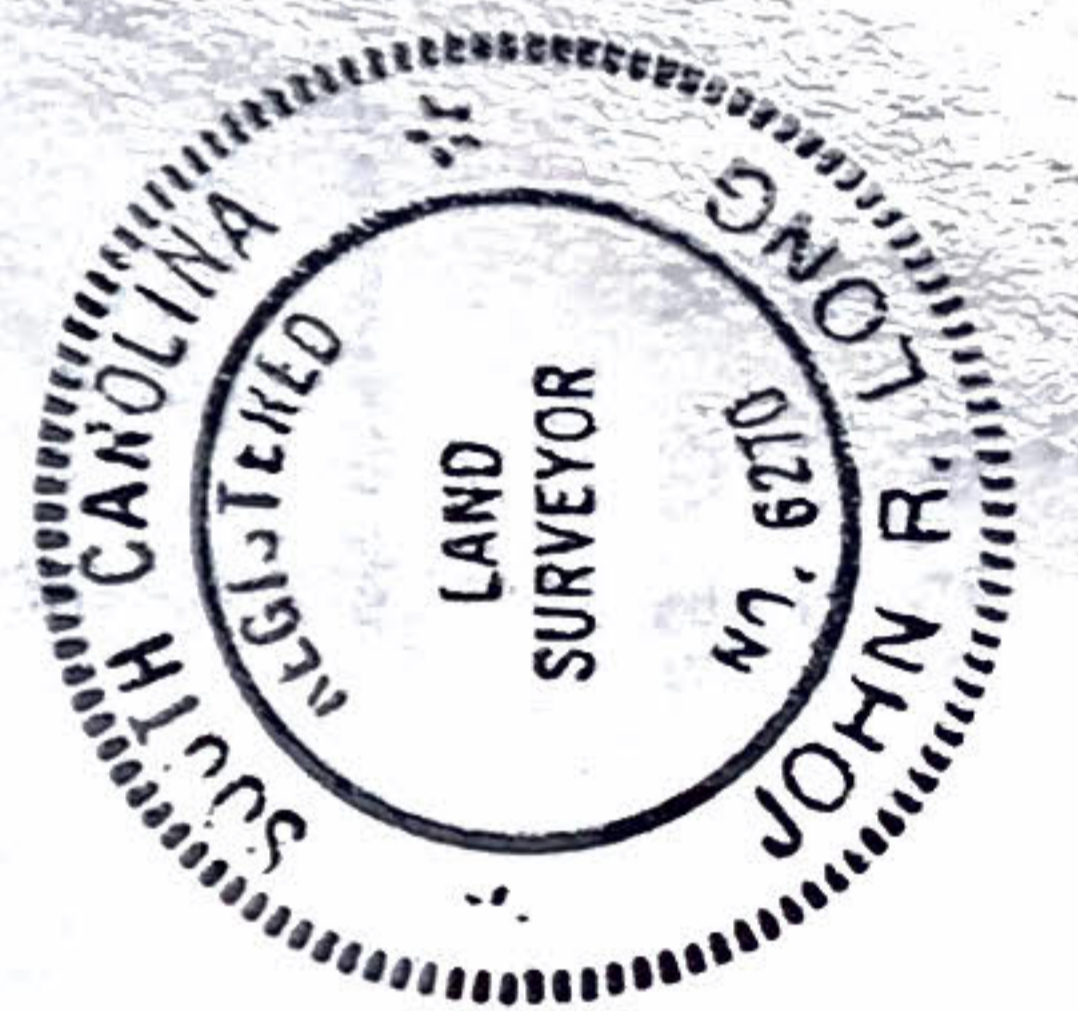


● = Existing Iron Pin, NIP = New
Iron Pin, RR = Railroad Spike, N/C =
Nail & Cap, MH = Manhole

I certify that this plat was prepared from a field survey
made under my supervision and the precision is 1:7500+ and
the area is by the DMD Method.

John R. Long

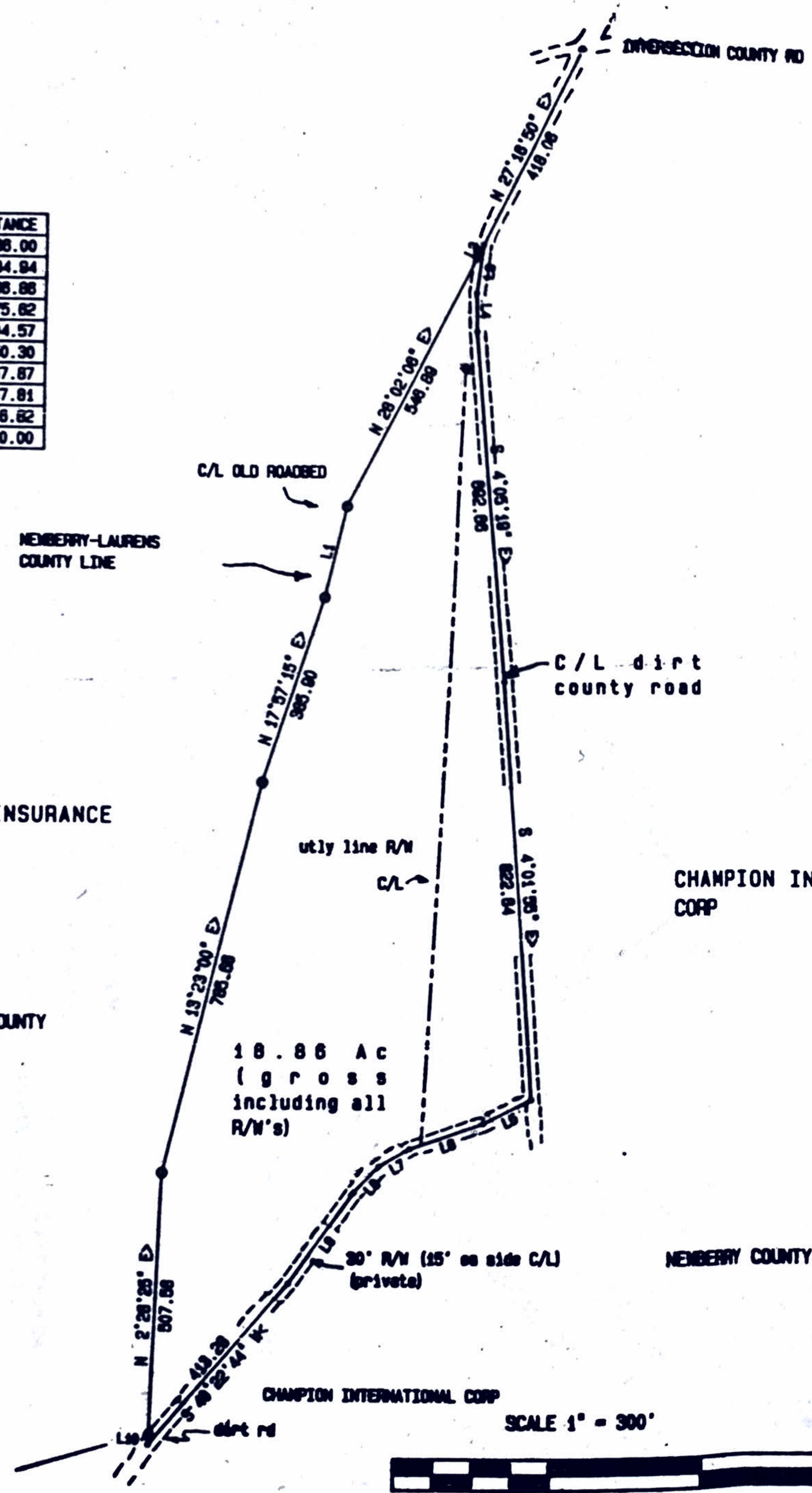
SC RLS 6270



- LIBERTY LIFE INSURANCE CO -

NEWBERRY COUNTY, SOUTH CAROLINA
LAURENS-NEWBERRY Co Line SEPTEMBER 15, 1988
Scale 1" = 300' Job 844-4917

John R Long & Associates
803-654-5033
Clemson, South Carolina



LIBERTY LIFE INSURANCE
COMPANY

LAURENS COUNTY

CHAMPION INTERNATIONAL
CORP

NEWBERRY COUNTY

SCALE 1" = 300'