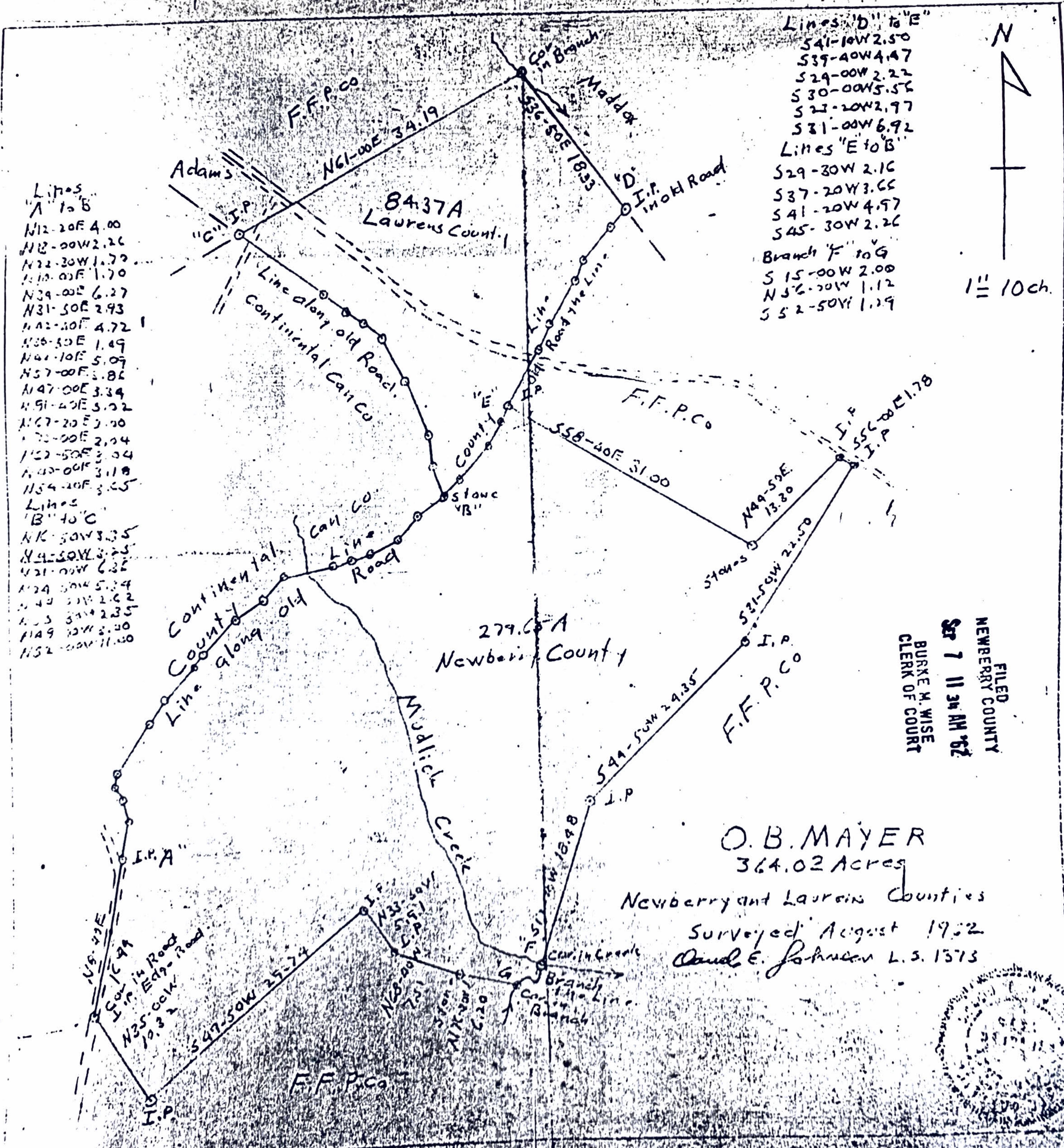
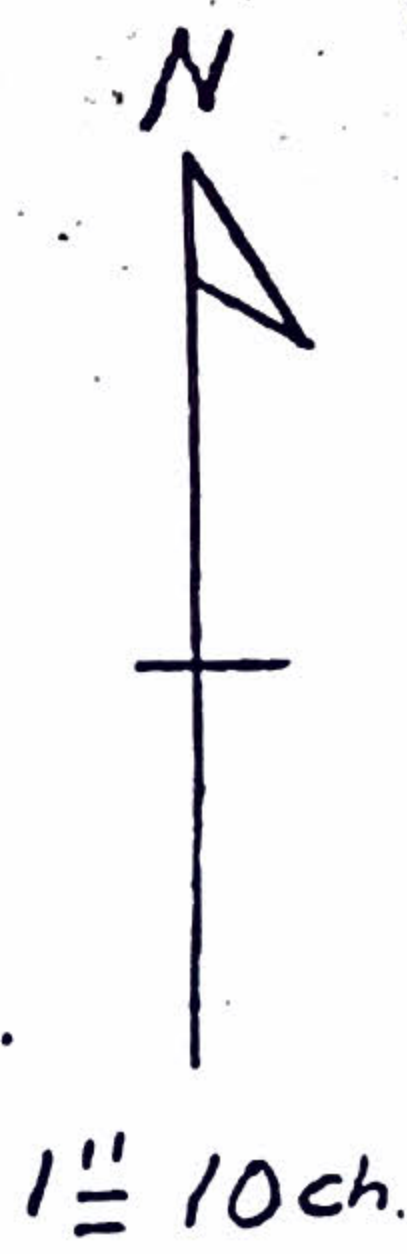


O. B. Mayer (364.02 acres)



Lines
"A" to "B"
 N12-20E 4.00
 N12-00W 2.26
 N22-30W 1.70
 N10-00E 1.70
 N39-00E 6.27
 N31-50E 2.93
 N42-30E 4.72
 N36-30E 1.49
 N41-10E 5.09
 N57-00E 3.82
 N47-00E 3.34
 N91-40E 5.02
 N67-20E 2.00
 N70-00E 2.04
 N52-50E 2.34
 N40-00E 3.18
 N54-10E 3.25
 Lines
 "B" to "C"
 N16-50W 3.35
 N4-50W 3.25
 N21-00W 6.32
 N24-50W 5.24
 N40-50W 2.22
 N43-50W 2.35
 N49-50W 2.30
 N52-50W 11.00

Lines "D" to "E"
 S41-10W 2.50
 S39-40W 4.47
 S29-00W 2.22
 S30-00W 5.56
 S27-20W 2.97
 S31-00W 6.92
 Lines "E" to "B"
 S29-30W 2.16
 S37-20W 3.66
 S41-20W 4.97
 S45-30W 2.26
 Branch "F" to "G"
 S15-00W 2.00
 N32-20W 1.12
 S52-50W 1.29



FILED
 NEWBERRY COUNTY
 SEP 7 11 34 AM '62
 BURKE M. WISE
 CLERK OF COURT

O. B. MAYER
 364.02 Acres

Newberry and Laurens Counties
 Surveyed August 1962
 Oud E. Johnson L.S. 1573

