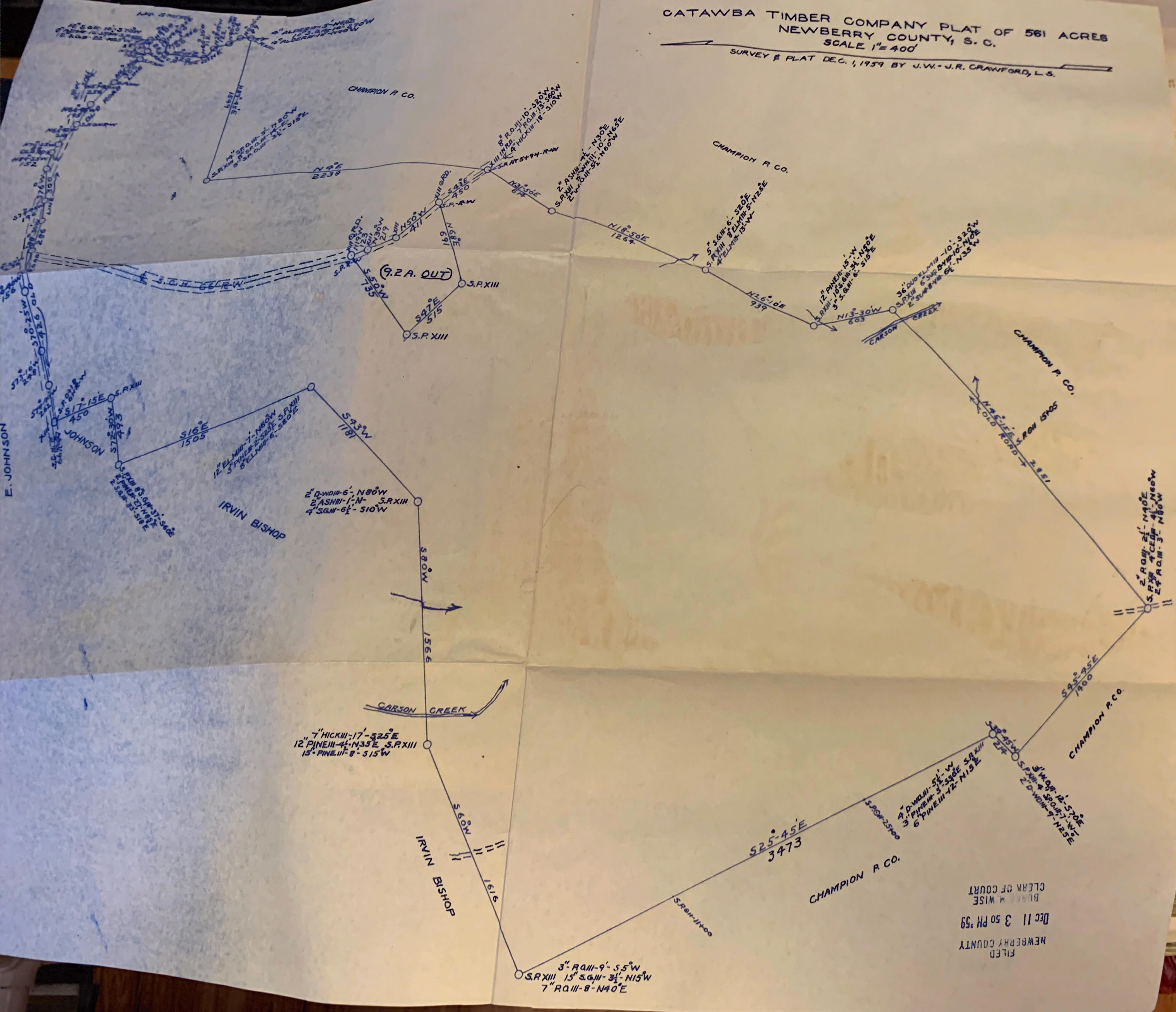


CATAWBA TIMBER COMPANY PLAT OF 561 ACRES
 NEWBERRY COUNTY, S. C.
 SCALE 1"=400'

SURVEY & PLAT DEC. 1, 1959 BY J.W.-J.R. CRAWFORD, L.S.



CHAMPION P. CO.

CHAMPION P. CO.

CHAMPION P. CO.

CHAMPION P. CO.

CHAMPION P. CO.

IRVIN BISHOP

IRVIN BISHOP

JOHNSON

E. JOHNSON

CARSON CREEK

CARSON CREEK

(9.2 A. OUT)

FILED
 NEWBERRY COUNTY
 DEC 11 3 50 PM '59
 BUREAU WISE
 CLERK OF COURT

3" R.O. III-9'-S.5°W
 S.P. XIII 15" S.G. II-3 1/2'-N.15°W
 7" R.O. III-8'-N.40°E

7" HICK III-17'-S.25°E
 12" PINE III-4'-N.35°E S.P. XIII
 13" PINE III-8'-S.15°W

2" D. W. III-6'-N.80°W
 2" ASH III-1'-N- S.P. XIII
 4" S.G. II-6 1/2'-S.10°W

2" R.O. III-21'-N.40°E
 S.P. XIII 4" CEDAR-4'-N.60°W
 2" R.O. III-3'-N.80°W

36" DUEL III-10'-S.20°W
 S.P. XIII 6" S.G. II-8'-N.10°E
 2" S.G. II-6'-N.35°W

12" PINE III-15'-W
 S.P. XIII 10" S.G. II-3'-N.50°E
 9" S.G. II-6'-S.15°E

5" S.G. II-6'-S.20°E
 S.P. XIII 8" DUEL III-5'-N.25°E
 4" ELM III-12'-W

2" ASH III-4'-N.30°E
 S.P. XIII 2" W. III-10'-N.60°W
 2" W. III-5'-N.60°W

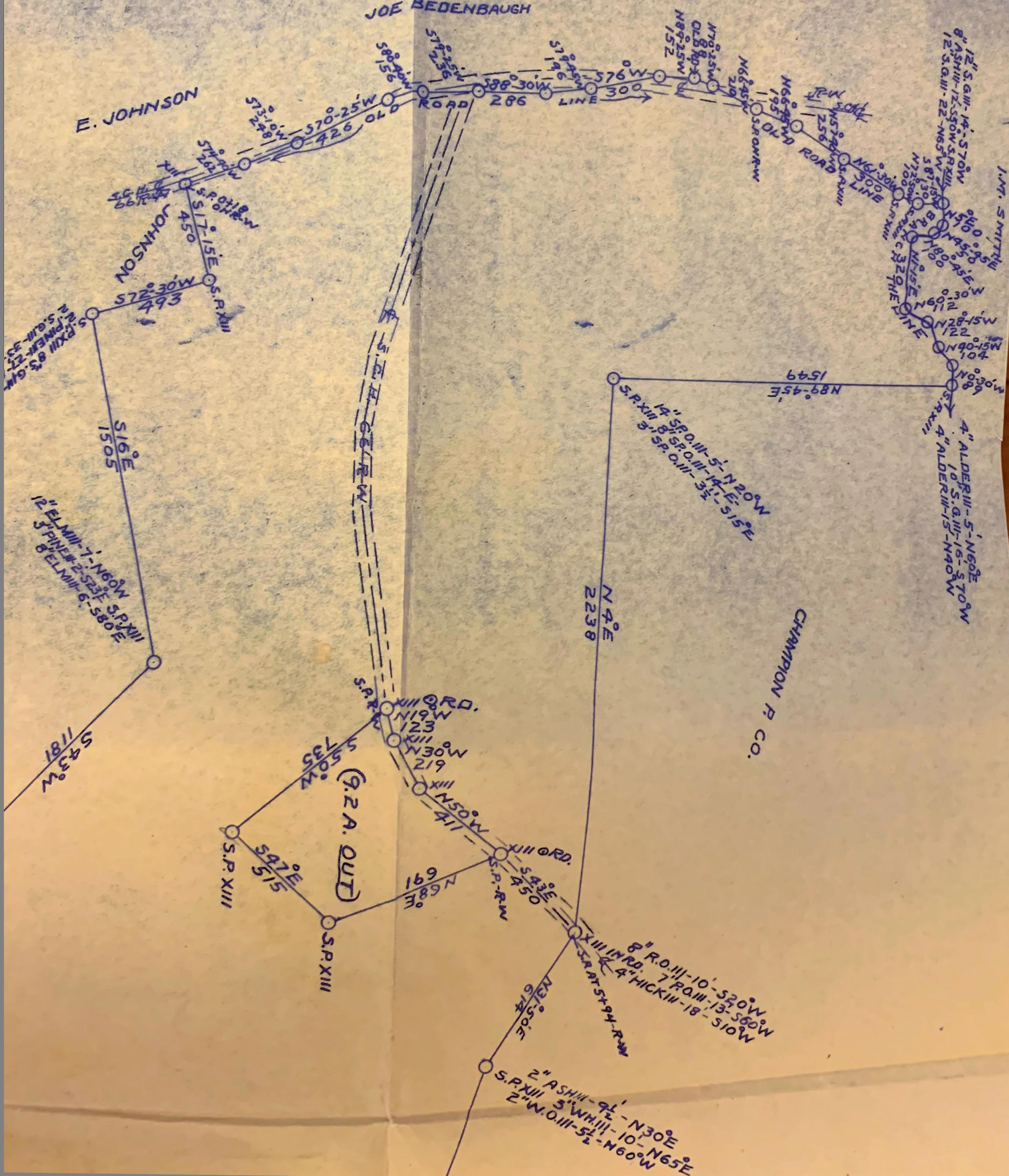
8" R.O. III-10'-S.20°W
 7" R.O. III-7'-S.30°W
 4" HICK III-18'-S.10°W

14" S.P. O. III-5'-N.20°W
 10" S. D. III-14'-E
 5" S.P. O. III-3 1/2'-S.15°E

1" S. D. III-10'-S.20°W
 1" S. D. III-10'-S.20°W
 2" S. D. III-10'-S.20°W

JOE BEDENBAUGH

E. JOHNSON



I.M. SMITH

CHAMPION P. CO.

(9.2 A. OUT)

S.P. XIII 83.6M
S.P. XII 21.2M
S.P. XI 27.3M
S.P. X 33.4M
S.P. IX 39.5M
S.P. VIII 45.6M
S.P. VII 51.7M
S.P. VI 57.8M
S.P. V 63.9M
S.P. IV 70.0M
S.P. III 76.1M
S.P. II 82.2M
S.P. I 88.3M
S.P. 0 94.4M
S.P. -1 100.5M
S.P. -2 106.6M
S.P. -3 112.7M
S.P. -4 118.8M
S.P. -5 124.9M
S.P. -6 131.0M
S.P. -7 137.1M
S.P. -8 143.2M
S.P. -9 149.3M
S.P. -10 155.4M
S.P. -11 161.5M
S.P. -12 167.6M
S.P. -13 173.7M
S.P. -14 179.8M
S.P. -15 185.9M
S.P. -16 192.0M
S.P. -17 198.1M
S.P. -18 204.2M
S.P. -19 210.3M
S.P. -20 216.4M
S.P. -21 222.5M
S.P. -22 228.6M
S.P. -23 234.7M
S.P. -24 240.8M
S.P. -25 246.9M
S.P. -26 253.0M
S.P. -27 259.1M
S.P. -28 265.2M
S.P. -29 271.3M
S.P. -30 277.4M
S.P. -31 283.5M
S.P. -32 289.6M
S.P. -33 295.7M
S.P. -34 301.8M
S.P. -35 307.9M
S.P. -36 314.0M
S.P. -37 320.1M
S.P. -38 326.2M
S.P. -39 332.3M
S.P. -40 338.4M
S.P. -41 344.5M
S.P. -42 350.6M
S.P. -43 356.7M
S.P. -44 362.8M
S.P. -45 368.9M
S.P. -46 375.0M
S.P. -47 381.1M
S.P. -48 387.2M
S.P. -49 393.3M
S.P. -50 399.4M
S.P. -51 405.5M
S.P. -52 411.6M
S.P. -53 417.7M
S.P. -54 423.8M
S.P. -55 429.9M
S.P. -56 436.0M
S.P. -57 442.1M
S.P. -58 448.2M
S.P. -59 454.3M
S.P. -60 460.4M
S.P. -61 466.5M
S.P. -62 472.6M
S.P. -63 478.7M
S.P. -64 484.8M
S.P. -65 490.9M
S.P. -66 497.0M
S.P. -67 503.1M
S.P. -68 509.2M
S.P. -69 515.3M
S.P. -70 521.4M
S.P. -71 527.5M
S.P. -72 533.6M
S.P. -73 539.7M
S.P. -74 545.8M
S.P. -75 551.9M
S.P. -76 558.0M
S.P. -77 564.1M
S.P. -78 570.2M
S.P. -79 576.3M
S.P. -80 582.4M
S.P. -81 588.5M
S.P. -82 594.6M
S.P. -83 600.7M
S.P. -84 606.8M
S.P. -85 612.9M
S.P. -86 619.0M
S.P. -87 625.1M
S.P. -88 631.2M
S.P. -89 637.3M
S.P. -90 643.4M
S.P. -91 649.5M
S.P. -92 655.6M
S.P. -93 661.7M
S.P. -94 667.8M
S.P. -95 673.9M
S.P. -96 680.0M
S.P. -97 686.1M
S.P. -98 692.2M
S.P. -99 698.3M
S.P. -100 704.4M

12" S.G.III-14'-S70W
8" ASH.IV-12'-S50W S.P.XIII
12" S.G.III-22'-N65W

4" ALDER.III-5'-N60E
10" S.G.III-16'-S70W
4" ALDER.III-15'-N40W

14" S.P.O.III-5'-N20W
8" S.P.O.III-14'-E-515E
3" S.P.O.III-3 1/2'-S15E

N4E
2238

8" R.O.III-10'-S20W
7" R.O.III-13'-S60W
4" HICK.III-18'-S10W

2" ASH.III-9 1/2'-N30E
5" S.P.XIII 3" W.H.III-10'-N65E
2" W.O.III-5 1/2'-N60W

S.P. XIII RD.
N19W 123
N30W 219
N50W 411

S.P. RD.
S42E 450

S.P. XIII
S47E 515

S16E
1505

12" ELM.III-7'-N60W S.P.XIII
3" PINE.IV-2'-S23E S.P.XIII
8" ELM.III-6'-S80E

S43W
1181

S.P. XIII
S72-30W 493
S.P. XIII
S71-15E 450
S.P. XIII
S73-10W 426

ROAD
S79-25W 589
S78-30W 286
S76W 300
S74-25W 579
S73-10W 426
S71-15E 450
S70-25W 426

TRW 500
N57-45W 256
N62-45W 210
N66-45W 195
N68-45W 180
N64-30W 300

N61-30W 300
N72-30W 100
N75-30W 150
N78-30W 200
N81-30W 250
N84-30W 300
N87-30W 350
N90-30W 400
N93-30W 450
N96-30W 500
N99-30W 550
N102-30W 600
N105-30W 650
N108-30W 700
N111-30W 750
N114-30W 800
N117-30W 850
N120-30W 900
N123-30W 950
N126-30W 1000

JOHNSON
S.P. XIII
S71-15E 450
S.P. XIII
S72-30W 493

S.P. XIII 83.6M
S.P. XII 21.2M
S.P. XI 27.3M
S.P. X 33.4M
S.P. IX 39.5M
S.P. VIII 45.6M
S.P. VII 51.7M
S.P. VI 57.8M
S.P. V 63.9M
S.P. IV 70.0M
S.P. III 76.1M
S.P. II 82.2M
S.P. I 88.3M
S.P. 0 94.4M
S.P. -1 100.5M
S.P. -2 106.6M
S.P. -3 112.7M
S.P. -4 118.8M
S.P. -5 124.9M
S.P. -6 131.0M
S.P. -7 137.1M
S.P. -8 143.2M
S.P. -9 149.3M
S.P. -10 155.4M
S.P. -11 161.5M
S.P. -12 167.6M
S.P. -13 173.7M
S.P. -14 179.8M
S.P. -15 185.9M
S.P. -16 192.0M
S.P. -17 198.1M
S.P. -18 204.2M
S.P. -19 210.3M
S.P. -20 216.4M
S.P. -21 222.5M
S.P. -22 228.6M
S.P. -23 234.7M
S.P. -24 240.8M
S.P. -25 246.9M
S.P. -26 253.0M
S.P. -27 259.1M
S.P. -28 265.2M
S.P. -29 271.3M
S.P. -30 277.4M
S.P. -31 283.5M
S.P. -32 289.6M
S.P. -33 295.7M
S.P. -34 301.8M
S.P. -35 307.9M
S.P. -36 314.0M
S.P. -37 320.1M
S.P. -38 326.2M
S.P. -39 332.3M
S.P. -40 338.4M
S.P. -41 344.5M
S.P. -42 350.6M
S.P. -43 356.7M
S.P. -44 362.8M
S.P. -45 368.9M
S.P. -46 375.0M
S.P. -47 381.1M
S.P. -48 387.2M
S.P. -49 393.3M
S.P. -50 399.4M
S.P. -51 405.5M
S.P. -52 411.6M
S.P. -53 417.7M
S.P. -54 423.8M
S.P. -55 429.9M
S.P. -56 436.0M
S.P. -57 442.1M
S.P. -58 448.2M
S.P. -59 454.3M
S.P. -60 460.4M
S.P. -61 466.5M
S.P. -62 472.6M
S.P. -63 478.7M
S.P. -64 484.8M
S.P. -65 490.9M
S.P. -66 497.0M
S.P. -67 503.1M
S.P. -68 509.2M
S.P. -69 515.3M
S.P. -70 521.4M
S.P. -71 527.5M
S.P. -72 533.6M
S.P. -73 539.7M
S.P. -74 545.8M
S.P. -75 551.9M
S.P. -76 558.0M
S.P. -77 564.1M
S.P. -78 570.2M
S.P. -79 576.3M
S.P. -80 582.4M
S.P. -81 588.5M
S.P. -82 594.6M
S.P. -83 600.7M
S.P. -84 606.8M
S.P. -85 612.9M
S.P. -86 619.0M
S.P. -87 625.1M
S.P. -88 631.2M
S.P. -89 637.3M
S.P. -90 643.4M
S.P. -91 649.5M
S.P. -92 655.6M
S.P. -93 661.7M
S.P. -94 667.8M
S.P. -95 673.9M
S.P. -96 680.0M
S.P. -97 686.1M
S.P. -98 692.2M
S.P. -99 698.3M
S.P. -100 704.4M