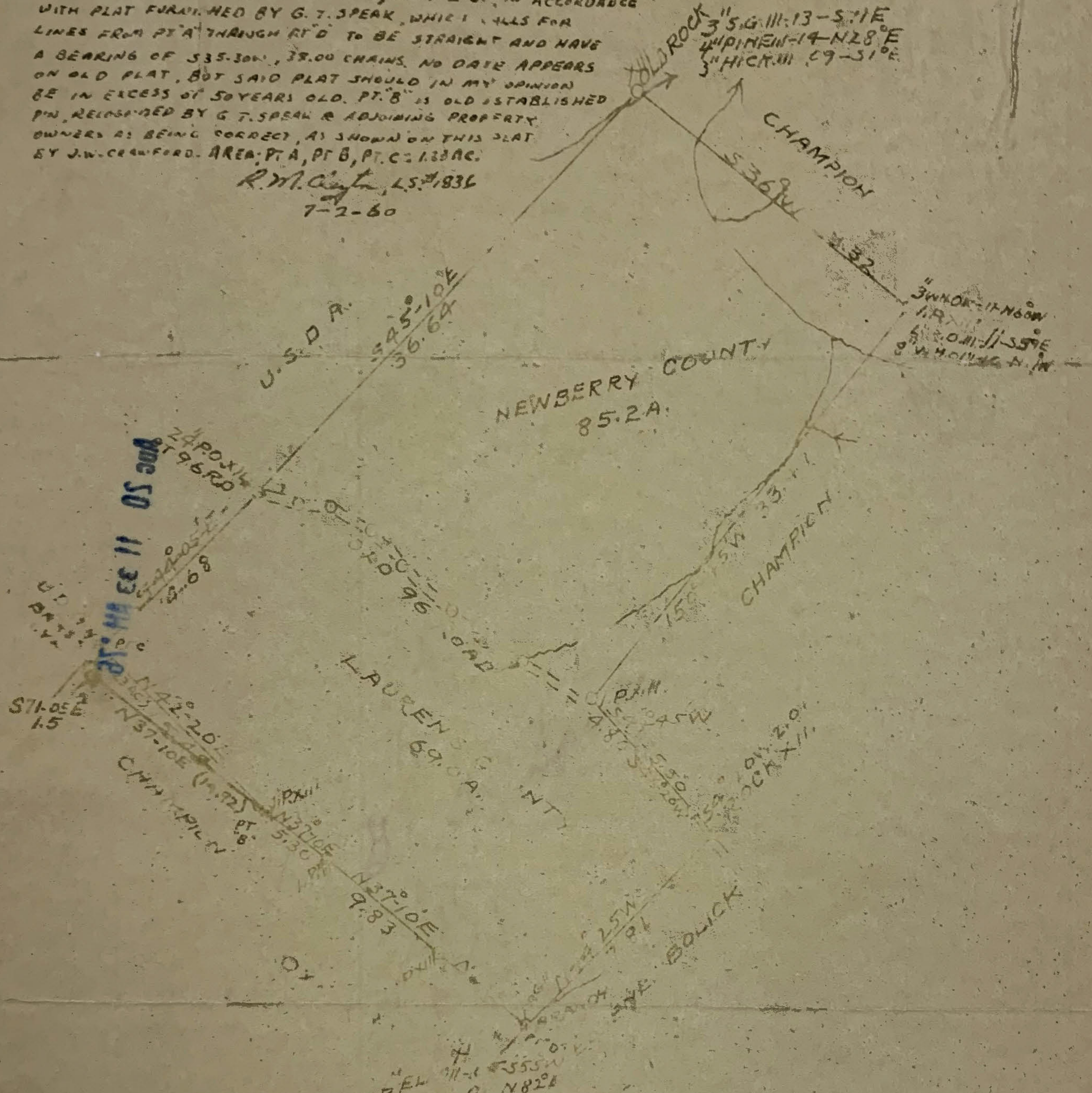


NOTE:

PT. A TO PT. B WAS RUN BY ME, ON 7-2-60, IN ACCORDANCE WITH PLAT FURNISHED BY G. T. SPEAK, WHICH CALLS FOR LINES FROM PT. A THROUGH PT. D TO BE STRAIGHT AND HAVE A BEARING OF S35-30W, 38.00 CHAINS. NO DATE APPEARS ON OLD PLAT, BUT SAID PLAT SHOULD IN MY OPINION BE IN EXCESS OF 50 YEARS OLD. PT. B IS OLD ESTABLISHED PIN, RECORDED BY G. T. SPEAK & ADJOINING PROPERTY OWNERS AS BEING CORRECT, AS SHOWN ON THIS PLAT BY J. W. CRAWFORD. AREA: PT. A, PT. B, PT. C: 1.83 AC.

R. M. C. [Signature], L.S. #1836

7-2-60



G. T. SPEAK F. A. OF THE RE
LAURENS-NEWBERRY CO.

SURVEYED AT APR 14, 50