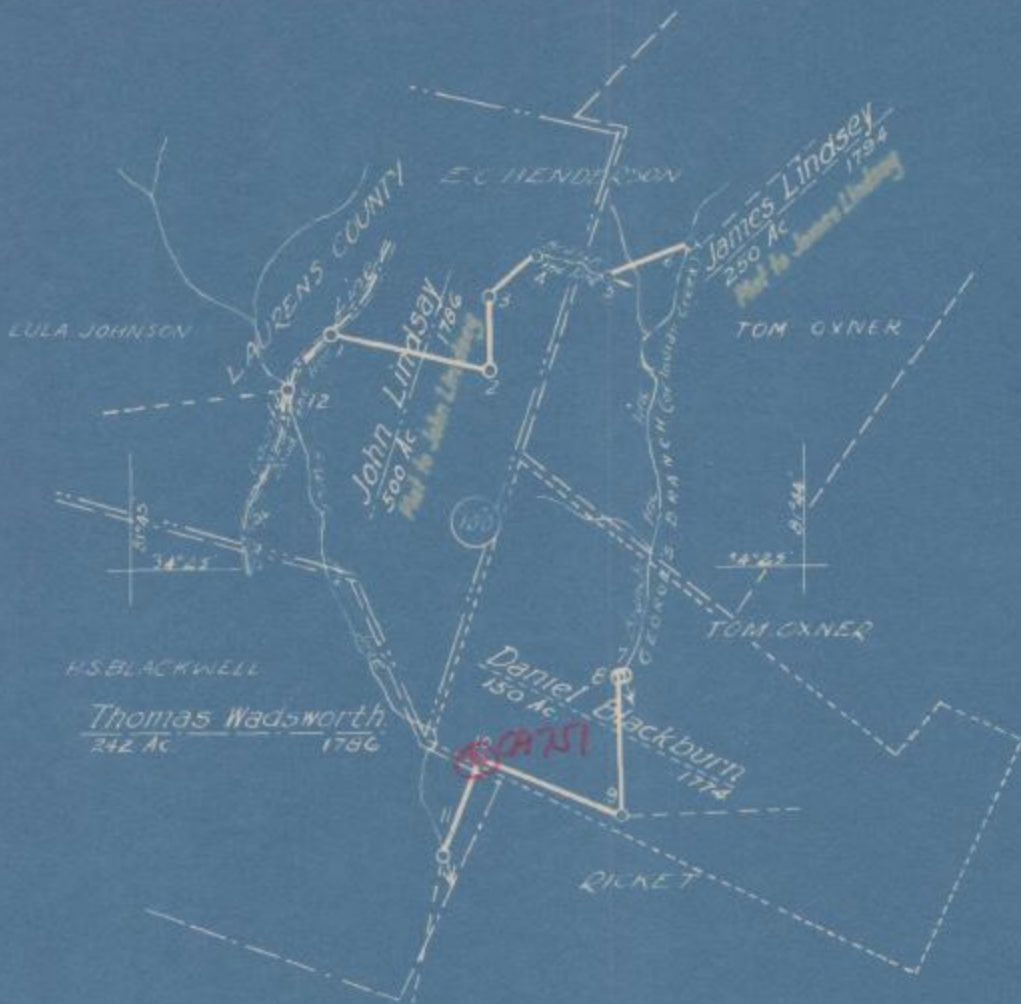


NOTE: For bearings and distances see the description to which this map is attached and of which it is a part.



ENOREE PURCHASE UNIT  
LAND OF  
EDWARD C. HENDERSON  
NUMBER 100

182.3 ACRES

NEWBERRY COUNTY, SOUTH CAROLINA

SCALE

1 INCH = 20 CHAINS

SURVEYED BY  
A.L. GLEN & PARTY  
JUNE 1934



\*MAP00508\*

DESCRIPTION OF THE BOUNDARY OF THE  
EDWARD C. HENDERSON TRACT (100)  
NEWBERRY COUNTY, SOUTH CAROLINA.

All that certain tract or parcel of land, lying and being in Newberry County, South Carolina, on the waters of George's Branch, a tributary of Enoree River, situate about four miles East of Goldville, being covered by the following grants:

<u>NAME</u>	<u>DATE</u>	<u>ACRES</u>
Thomas Wadsworth ✓	1786	242
Daniel Blackburn ✓	1774	150
John Lindsey ( <i>Plat to John Lindsey</i> )	1788	500
James Lindsey ( <i>Plat to James Lindsey</i> )	1794	250

2-27-30  
A.L.G.

All bearings in this description are turned from the true meridian and all distances are expressed in chains.

This property is more particularly delineated on a plat thereof, compiled by the U. S. Forest Service, Enoree Purchase Unit, surveyed June 1934, said plat being hereby declared to be part and parcel of this description.

Beginning at Corner 1, a stake set, in center of Old Ninety-Six Road, common to Lula Johnson tract and E. C. Henderson tract. A scribed 8" pine bears WEST, 0.23 chain distant and a scribed 12" pine bears S. 5° E., 0.31 chain distant.

Thence, three (3) lines with E. C. Henderson tract,  
S. 77° 00' E., 18.3 chains to Corner 2, a stake set in a mound of stones;  
N. 0° 15' W., 8.2 chains to Corner 3, a scribed 10" red oak;  
N. 48° 45' W., 7.1 chains to Corner 4, a point in the center of branch, common to E. C. Henderson tract. A marked 18" pine on bank of said branch is witness to corner.

Thence, in an Easterly direction, down and with the meanders of the center of said branch, 9.0 chains to Corner 5, a point in the center of said branch, common to E. C. Henderson tract. A marked 12" poplar on bank of branch is witness to corner.

Thence, with E. C. Henderson tract,  
N. 68° 15' E., 9.8 chains to Corner 6, a point in center of George's Branch, common to E. C. Henderson tract and Tom Oxner tract. A marked 14" poplar on bank of George's Branch is witness to corner.

Thence, in a Southerly direction, down and with the meanders of the center of George's Branch, 50.0 chains to Corner 7, a point in the center of said Branch, common to Tom Oxner tract. A marked 8" elm on bank of said Branch is witness to

corner.

Thence, two (2) lines with Tom Oxner tract,  
S. 88° 30' W., 0.59 chain to Corner 8, a marked 10" pine;  
S. 0° 30' E., 15.1 chains to Corner 9, a mound of stones, old witnesses, a  
stake set alongside, common to Tom Oxner tract and Ricket tract.

Thence, two (2) lines with said Ricket tract,  
N. 69° 51' W., 17.0 chains to Corner 10, a marked 6" pine, old witnesses;  
S. 20° 30' W., 11.5 chains to Corner 11, a point in the center of branch,  
common to said Ricket tract and H. S. Blackwell tract. A stake set on bank  
of branch, as witness to corner, bears N. 64° E., 0.14 chain distant, and a  
marked 12" maple on bank of branch is also a witness to corner.

Thence, in a Northwesterly direction, up and with the meanders of the  
center of said branch, 57.0 chains to Corner 12, a point in center of said  
branch at its intersection with the center of Old Ninety-Six Road, common to  
H. S. Blackwell tract and Lula Johnson tract. A stake set in center of said  
Road, as witness to corner, bears S. 56° W., 0.24 chain distant.

Thence, in a Northeasterly direction, along and with the center of  
said Old Ninety-Six Road, as it meanders, 8.0 chains to the Place of Beginning,  
containing One Hundred and Eighty-Two and Three-tenths ( 182.3 ) Acres, be  
the same more or less.