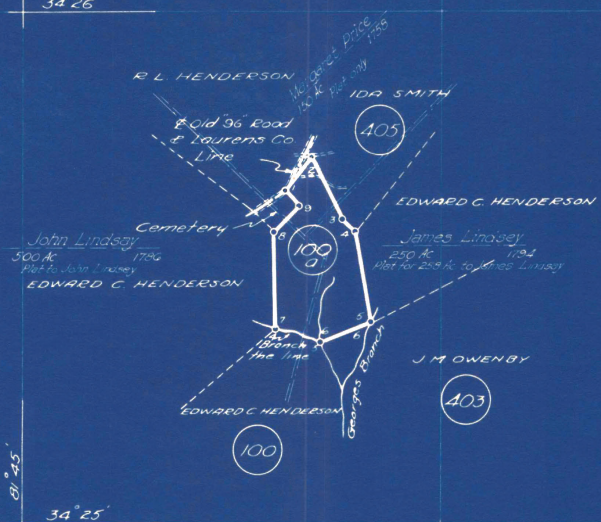


81° 45'

34° 26'

81° 45'

34° 25'



Note
 For bearings and distances
 see the description to which
 this map is attached and
 of which it is a part.

ENOREE PURCHASE UNIT
LAND OF
EDWARD C. HENDERSON
NUMBER 100 a
38.0 ACRES
NEWBERRY COUNTY, SOUTH CAROLINA



MAP00509

SCALE
 1 INCH = 20 CHAINS

SURVEYED BY
 A.L. GLEN & PARTY
 JUNE 1935

MWM 11-6-35

DESCRIPTION OF THE BOUNDARY OF THE
EDWARD C. HENDERSON TRACT (100-a)
NEWBERRY COUNTY, SOUTH CAROLINA.

All that certain tract or parcel of land, lying and being in Newberry County, South Carolina, on the watershed of George's Branch, a tributary of Enoree River, situate about 4 miles Northeast of Kinards and about 1½ miles Southeast of Bond's Cross Roads, being covered by the following grants:

<u>NAME</u>	<u>DATE</u>	<u>ACRES</u>
Margaret Price (Plat only)	1758	150
John Lindsey (Plat to John Lindsey)	1788	500
James Lindsey (Plat for 250 Acres to James Lindsey)	1794	250

All bearings in this description are turned from the true meridian and all distances are expressed in chains.

This property is more particularly delineated on a map thereof, compiled by the U.S. Forest Service, Enoree Purchase Unit, surveyed June 1934, said map being hereby declared to be part and parcel of this description.

Beginning at Corner 1, a stake, set in center of Old Ninety-Six Road, (Laurens-Newberry County Line) common to Cemetery tract and R.L. Henderson tract. A scribed 3" oak bears S. 45° E., 0.19 chain distant and a scribed 6" oak bears N. 38° E., 0.17 chain distant.

Thence, with R. L. Henderson tract, N. 38° 40' E., 7.5 chains to Corner 2, a stake set, common to R. L. Henderson tract and Ida Smith tract (405).

Thence, two (2) lines with Tract 405, S. 27° 28' E., 12.3 chains to Corner 3, a marked 5" dogwood, a stake set alongside;
S. 45° 00' E., 3.2 chains to Corner 4, an iron pin in mound of stones near spring, old witnesses, common to Tract 405 and Edward C. Henderson tract.

Thence, with Edward C. Henderson tract, S. 10° 15' E., 16.7 chains to Corner 5, a point in center of George's Branch, common to Edward C. Henderson tract, J. M. Owenby tract and also being the sixth corner of Edward C. Henderson tract (100). A marked 14" poplar on bank of George's Branch is a witness to the corner.

Thence, with Tract 100, reversed,
S. 68° 15' W., 9.8 chains to Corner 6, a point in center of branch,
the fifth corner of Tract 100. A marked 12" poplar on bank of branch
is a witness to the corner.

Thence, in a Westerly direction, up and with the meanders of
the center of branch, 9.0 chains to Corner 7, a point in center of
branch, the fourth corner of Tract 100, and being also common to
Edward C. Henderson tract. A marked 18" pine on bank of said branch
is witness to the corner.

Thence, with Edward C. Henderson tract,
North, 17.4 chains to Corner 8, a marked 8" red oak, old witnesses,
common to Edward C. Henderson tract and Cemetery tract.

Thence, two (2) lines with Cemetery tract,
N. 43° 58' E., 6.3 chains to Corner 9, a stake, set in cultivated
field;
N. 40° 30' W., 3.77 chains to The Place of Beginning containing THIRTY-
EIGHT (38.0) ACRES, be the same more or less.