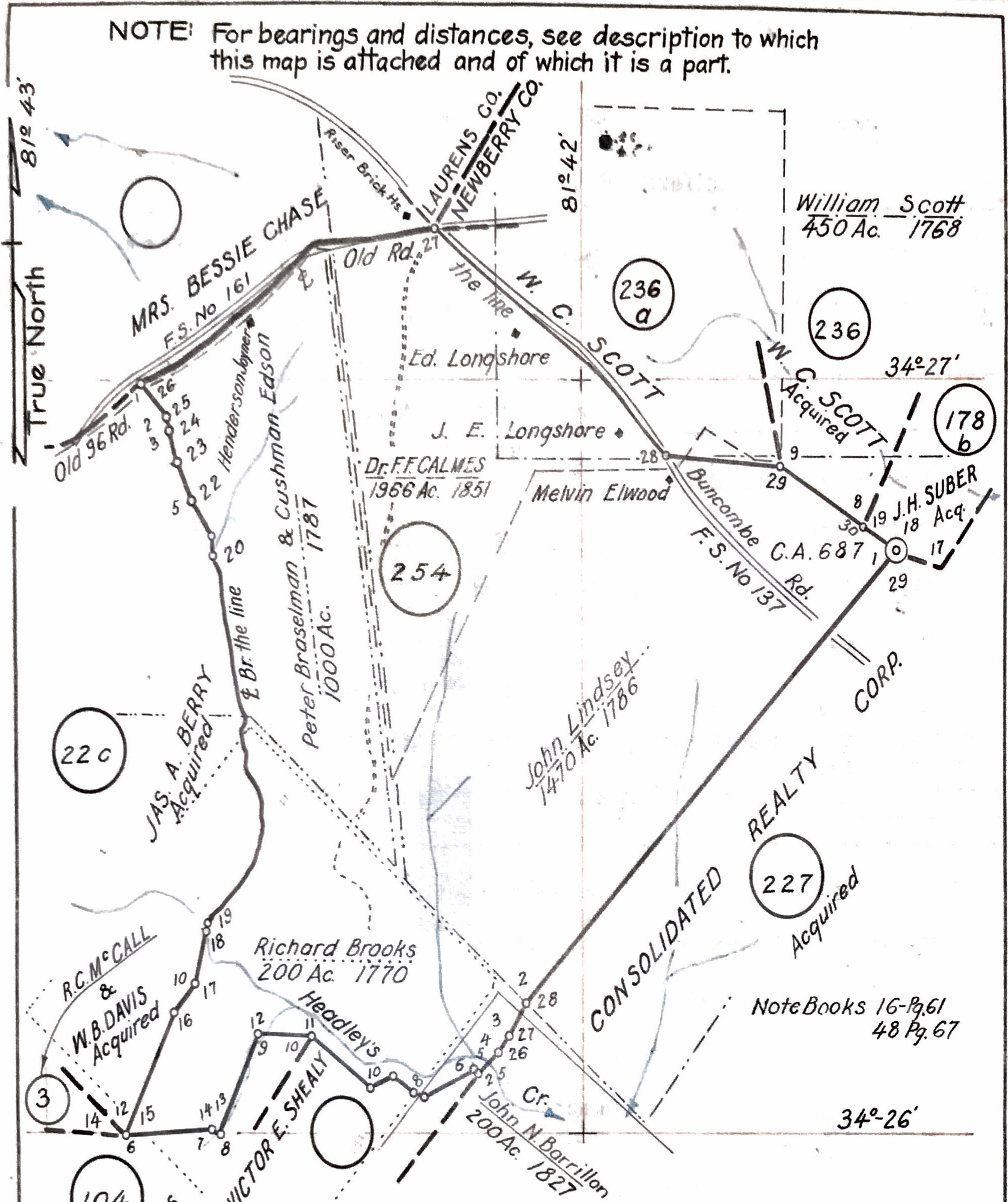


ACQUISITION SURVEY PLAT

NOTE: For bearings and distances, see description to which this map is attached and of which it is a part.



BANK OF GREENWOOD TRACT (254)

657.3 Acres

SUMTER NATIONAL FOREST
 ENOREE UNIT
 Newberry, County, S. C. State
 Scale: 4 inches = 1 mile

U.S.F.S. SURVEYS
 Surveyed by: L.H.M & A.L.G.
 Note Book: 23 Pg 43 & 67 P. 17
 Drawn by: Bruner 2-3-40
 Checked by: L.H.M.
 Date: 2-14-40

This tract is the Calhoun Harris place surveyed for the Bank of Greenwood in 1934 by Thos. C. Anderson and contained $66\frac{1}{2}$ Acres, but upon re-survey by the Forest Service was found to contain 657.3 Acres.

All bearings in this description are referred to the true meridian and all distances are expressed in chains.

This property is more particularly delineated on a map thereof, compiled by the U. S. Forest Service, Enoree District, from surveys of 1934 and 1940, said map being hereby declared to be part and parcel of this description.

Beginning at Corner 1, a stone, it being the eighteenth corner of the J. H. Suber tract (178b) and the twenty-ninth corner of the Consolidated Realty Corp. tract (227). Set a Forest Service standard concrete post marked 687-1936, from which a 10" oak bears N. 25° W., 0.05 chain distant, and an 8" oak bears S. 31° E., 0.07 chain distant.

Thence, four (4) lines with said Tract (227) reversed,
S. 43° 27' W., 75.28 chains to Corner 2, a marked oak, set a stake alongside.
S. 30° 30' W., 4.64 chains to Corner 3, a stake with old witnesses.
S. 40° 05' W., 2.46 chains to Corner 4, a stake set.
S. 48° 25' W., 4.12 chains to Corner 5, common to the Victor E. Shealy tract. Set a 4" x 4" and marked two maple bearing trees.

Thence, six (6) lines with the Victor E. Shealy tract,
N. 46° 45' W., 1.01 chains to Corner 6, a point at call. Set a stake and marked persimmon and ironwood bearing trees.
S. 64° 30' W., 7.88 chains to Corner 7, a large pine, with witnesses.
N. 70° 30' W., 1.58 chains to Corner 8, a point at call. Set a 4" x 4" oak stake and scribed oak bearing trees.
N. 56° 00' W., 3.45 chains to Corner 9, a rock. Set a 4" x 4" stake alongside and marked pine bearing trees.
S. 67° 00' W., 3.61 chains to Corner 10, a point at call.

Set a stake and scribed elm and pine bearing trees.
N. 58° 00' W., 11.05 chains to Corner 11, a point indicated
by poplar, elm and dogwood pointers. It being the
tenth corner of the J. H. Pitts tract (104). Set a
4" x 4" stake and marked poplar and elm bearing trees.

Thence, four (4) lines with Tract (104) reversed,
N. 87° 45' W., 7.6 chains to Corner 12, a stump hole
1.21 chains West of a branch. Set a 4" x 4" stake in
stump hole and marked bearing trees.
S. 25° 10' W., 13.5 chains along branch to Corner 13,
a marked oak near the branch. Marked pine bearing trees.
N. 75° 15' W., 0.91 chain to Corner 14, a marked post oak.
S. 85° 25' W., 11.3 chains to Corner 15, a stump hole,
it being the fourteenth corner of the R. C. McCall and
W. B. Davis tract (3), and the twelfth corner of the
James A. Berry Tract (22c). Set a stake in the stump
hole and marked pine bearing trees.

Thence, eleven (11) lines with Tract (22c)
reversed,
N. 25° 00' E., 16.6 chains to Corner 16, a stake set.
N. 39° 15' E., 4.58 chains to Corner 17, A marked 18"
sweet gum;
N. 10° 10' E., 6.44 chains to Corner 18. A point in the
center of Headley's Creek. A marked 14" sweet gum,
as witness to corner bears N. 44° E., 0.15 chain distant.
NORTHEASTERLY, 1.2 chains up and with the meanders of the
center of Headley's Crcek to Corner 19, a point at the
mouth of a branch in Headley's Creek. Set a stake
on the bank as witness corner.
NORTHERLY, 49.0 chains up and with the meanders of the
center of said branch to Corner 20, a point in branch.
Set a stake on the bank of branch as witness corner.
N. 4° 30' W., 2.36 chains to Corner 21, a point at old
witnesses. Set a stake.
N. 33° 30' W., 4.97 chains to Corner 22, an iron stake
with old witnesses.
N. 23° 15' W., 4.99 chains to Corner 23, an iron stake.
N. 10° 15' W., 4.08 chains to Corner 24, an iron stake.
N. 8° 30' W., 1.78 chains to Corner 25, a stake set from
calls.
N. 40° 30' W., 5.5 chains to Corner 26, a point in center
of Old Ninety-Six Road, it being the first corner of
said Tract (22c), common to the Mrs. Bessie Chase tract.

- 4 -

A marked locust, as witness to the corner, bears S. 56° E., 0.14 chain distant, and a scribed locust bears S. 44° E., 0.21 chain distant.

Thence, with the Mrs. Bessie Chase tract, along the meanders of the center of the Old Ninety-Six Road, NORTHEASTERLY, 47.0 chains to Corner 27, a point at intersection with the Old Buncombe Road near the old Riser Brick House, common to the W. C. Scott tract (236a). Marked a 6" elm.

Thence, two (2) lines with said Tract (236a), SOUTHEASTERLY, 43.0 chains along the meanders of the center of the old Buncombe Road to Corner 28, a point at intersection with hedge line. Set an iron pipe on the Northeast bank of the road at end of hedge and marked a black gum as witnesses. S. 87° 00' E., 16.8 chains to Corner 29, a red oak with old marks, it being the ninth corner of the W. C. Scott tract (236).

Thence, with said Tract (236) reversed, S. 57° 30' E., 13.8 chains to Corner 30, a mound of stones with old witness trees, it being the eighth corner of the W. C. Scott tract (236) and the nineteenth corner of said Tract (178b). Set a stake.

Thence, with said Tract (178b) reversed, S. 58° 40' E., 5.3 chains to the Place of Beginning, containing SIX HUNDRED FIFTY SEVEN AND THREE TENTHS (657.3) ACRES, be the same, more or less.

TOGETHER with all and singular the rights, members, hereditaments and appurtenances to the said premises belonging or in anywise incident or appertaining.

TO HAVE AND TO HOLD all and singular the said premises before mentioned unto the said UNITED STATES OF AMERICA, and its assigns forever, subject to the rights, if any, of the public in the roads on the tract.

AND the said BANK OF GREENWOOD does hereby bind itself and its successors to warrant and forever defend all and singular the said premises unto the said UNITED STATES OF AMERICA, and its assigns, against itself