

INDEX OF SHEETS

Sheet No.	Title
1	TITLE
2	TYPICAL SECTION
3	INTERSECTION STD.
4	SUPERELEVATION STD.
5	CONST. IDENTIFICATION SIGN
6-10	PLAN & PROFILE (LAURENS Co.)
10-13	PLAN & PROFILE (NEWBERRY Co.)
14-43	CROSS SECTIONS (LAURENS Co.)
43-64	CROSS SECTIONS (NEWBERRY Co.)

SOUTH CAROLINA
STATE HIGHWAY DEPARTMENT
COLUMBIA

PLAN AND PROFILE OF PROPOSED
STATE HIGHWAY

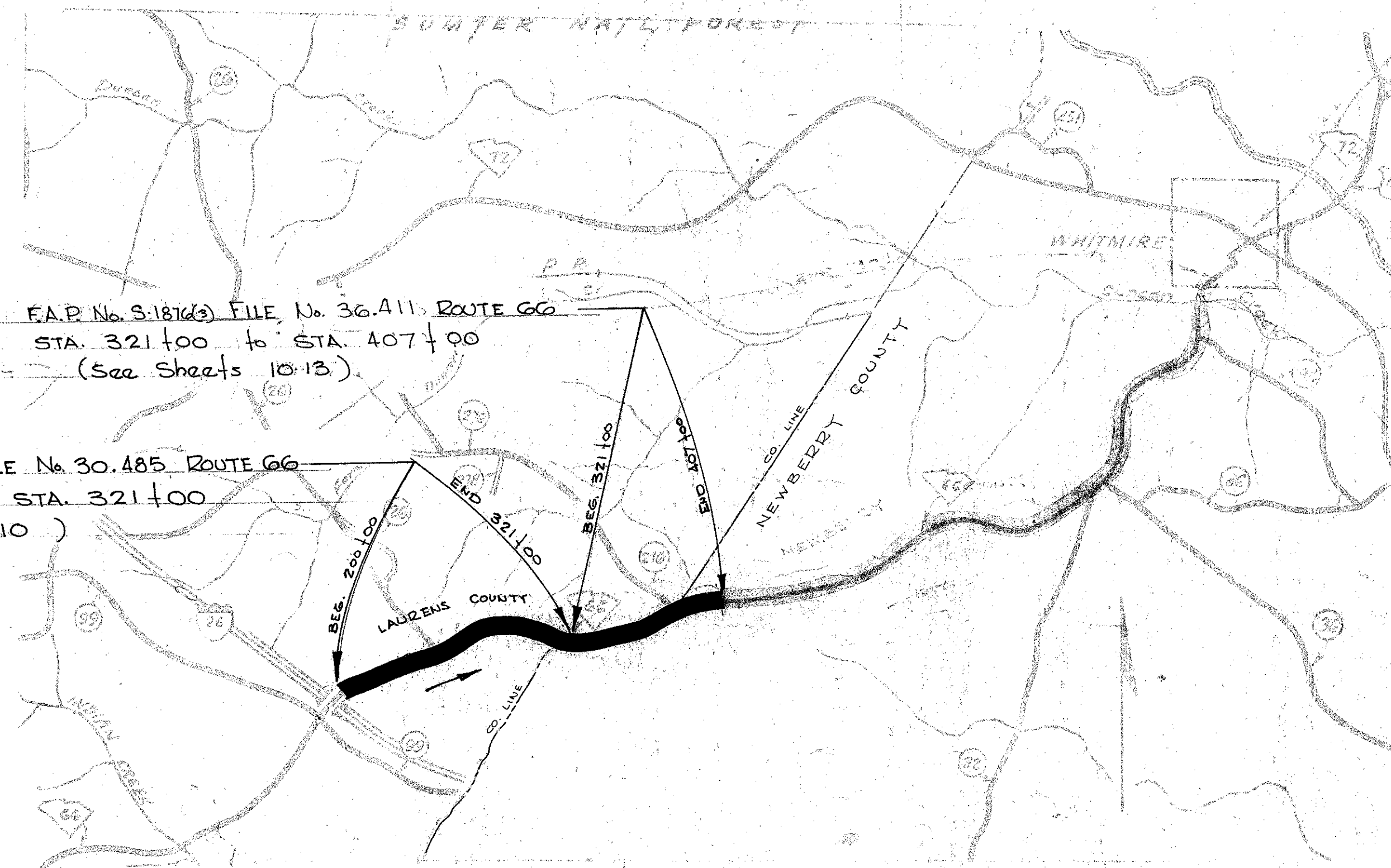
F.A.P. No. S-1876(3)
FILE No. 30.485
S.C. RTE. 66
FROM: I-26
TO: NEWBERRY CO. LINE
LAURENS COUNTY

F.A.P. No. S-1876(3)
FILE No. 36.411
S.C. RTE. 66
FROM: LAURENS CO. LINE
WESTERLY FOR 1.6 MILES
NEWBERRY COUNTY

F.P. NO.	STATE	COUNTY	SECTION NO.	F.A.P. NO.	DATE	SHEET NO.	TOTAL SHEETS
3	S.C.	LAURENS	30.485	S-1876(3)	66	1	64

SUMMARY OF ESTIMATED QUANTITIES

	LAURENS	NEWBERRY	
EARTHWORK			
Clearing and Grubbing within Right of Way	Nec.	Nec.	
Clearing and Grubbing of Barren and Material Pits	2.0	1.50	ACRES
Unclassified Excavation	34,039	85,641	C.Y.
Overhaul	121,456	84,602	C.Y.H.M.
Selected Material for Shoulders	2,698	1,917	C.Y.
BASE COURSE			
Earth Type Base Course (GROUND SURF.)	5922	4,126	C.Y.
Stabilizing, Mixing, Remolting, Shaping and Reshaping	35,211	24,614	M.S.Y.
SURFACING			
Bituminous Surfacing (Double Treatment) Types 1 or 2	33,867	23,658	S.Y.
STRUCTURES			
15" R.C. Culvert Pipe (Class III)	728	376	L.F.
18" R.C. Culvert Pipe (Class III)	662	348	L.F.
24" R.C. Culvert Pipe (Class III)	80	208	L.F.
48" R.C. Culvert Pipe (Class III)	92	—	L.F.
SEEDING AND FERTILIZATION			
Seeding (Mulched)	52,433	35,356	M.S.Y.
Fertilizer 4-12-12	6.0	4.0	TONS
Nitrogen (Actual)	518	350	LBS
Lime	10.8	7.3	TONS
Temporary Seeding (Mulched)	13,108	8,839	M.S.Y.
24" Bituminized Fiber Sectional Drain (1/2 Section)	230	160	L.F.
30" Bituminized Fiber Sectional Drain (1/2 Section)	230	160	L.F.
36" Bituminized Fiber Sectional Drain (1/2 Section)	230	160	L.F.
8" Bituminized Fiber Pipe Slope Drain	460	320	L.F.
Terracing	2,300	1,600	L.F.
Reset Fence	8,600	—	L.F.



	30.485 LAURENS	36.411 NEWBERRY	
Net Length of Roadway	2.292	1.629	Miles
Net Length of Bridges	—	—	Miles
Net Length of Project	2.292	1.629	Miles
Length of Exception	—	—	Miles
Gross Length of Project	2.292	1.629	Miles

CONVENTIONAL SIGNS

State Line	Trolley Poles	Power Poles	City or Town Limits	Telephone or Telegraph Poles	Marsh	Fence	Brush	Stamps	Buildings	Bridges	Concrete Box Culvert	Pipe Culvert	Drop Inlet and Culvert	Mud on Center Line
------------	---------------	-------------	---------------------	------------------------------	-------	-------	-------	--------	-----------	---------	----------------------	--------------	------------------------	--------------------

LEGEND

PROPOSED PROJECT	RAV.	ED.
OTHER ROADS	RAV.	ED.

RESERVED FOR THE STATE HIGHWAY ENGINEER

DATE: 1-11-71

Signature: [Handwritten Signature]

APPROVED: [Signature] 1-11-71
STATE HIGHWAY ENGINEER DATE

DEPARTMENT OF COMMERCE
BUREAU OF PUBLIC ROADS

APPROVED: [Signature] DATE

APPROVED: [Signature] DATE

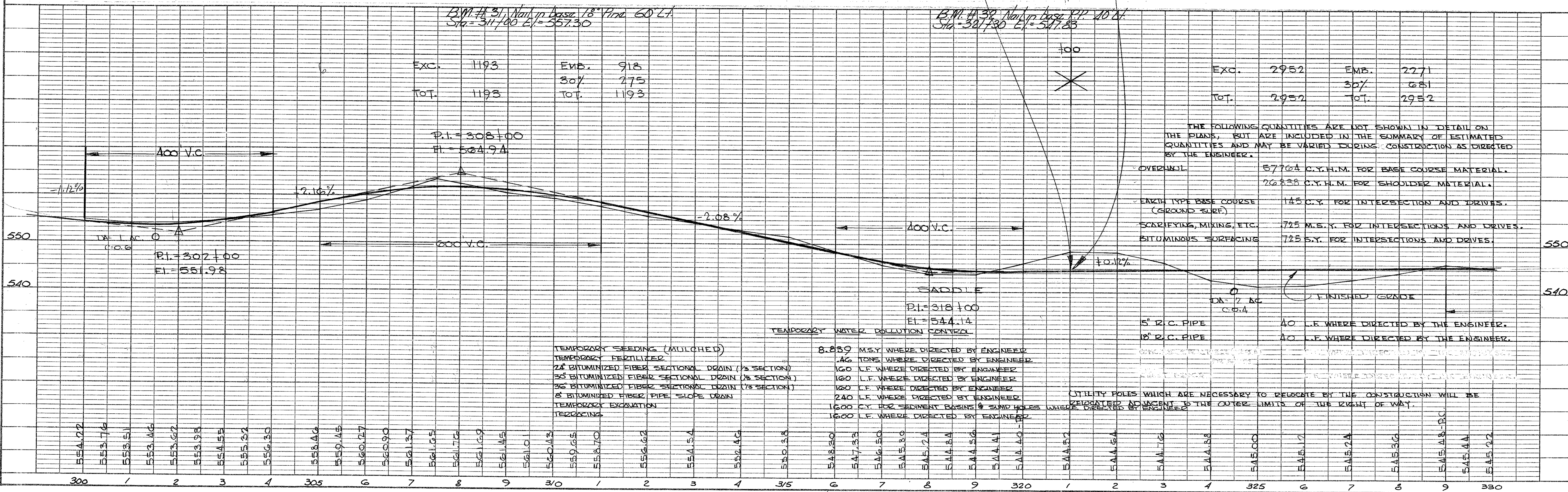
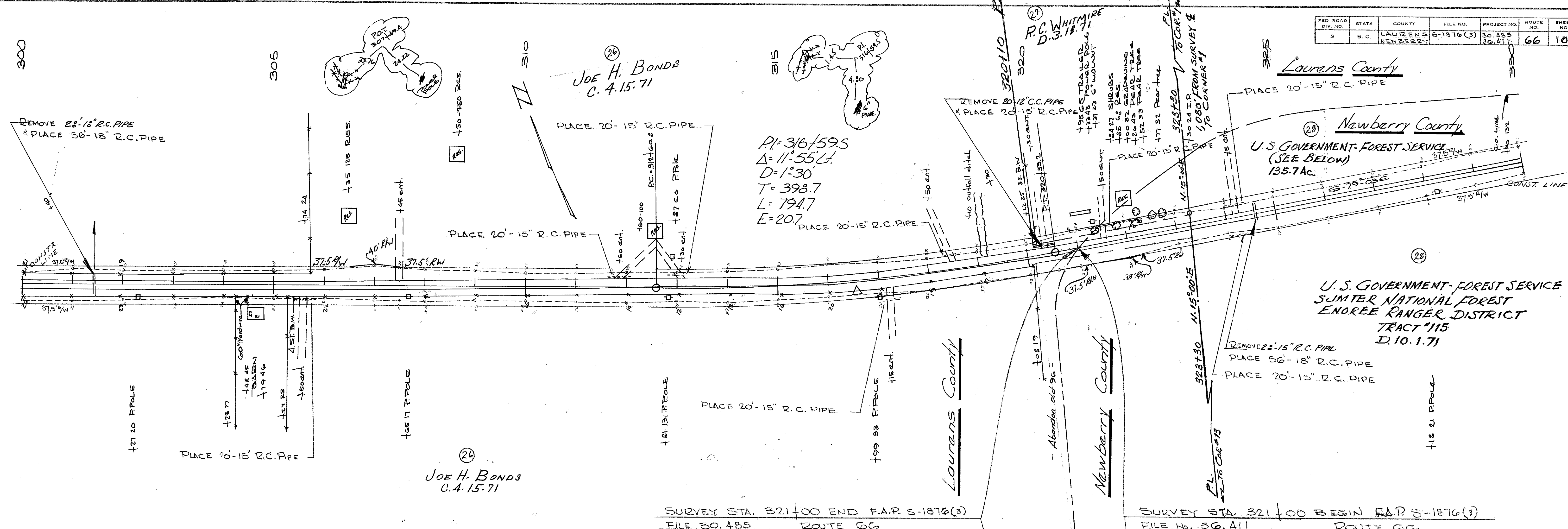
DIVISION ENGINEER DATE

Note: All workmanship and material for this project conform with South Carolina State Highway Department Standard Specifications for Highway Construction, dated Nov. 1, 1955.

FED. ROAD DIV. NO.	STATE	COUNTY	FILE NO.	PROJECT NO.	ROUTE NO.	SHEET NO.	TOTAL SHEETS
3	S.C.	LAURENS	5-1876(3)	30.485	66	10	64

PLAN
 SURVEYED BY
 DATE
 NOTE BOOK NO.
 GRADES CHECKED
 ALIGNMENT CHECKED
 RT. OF WAY CHECKED

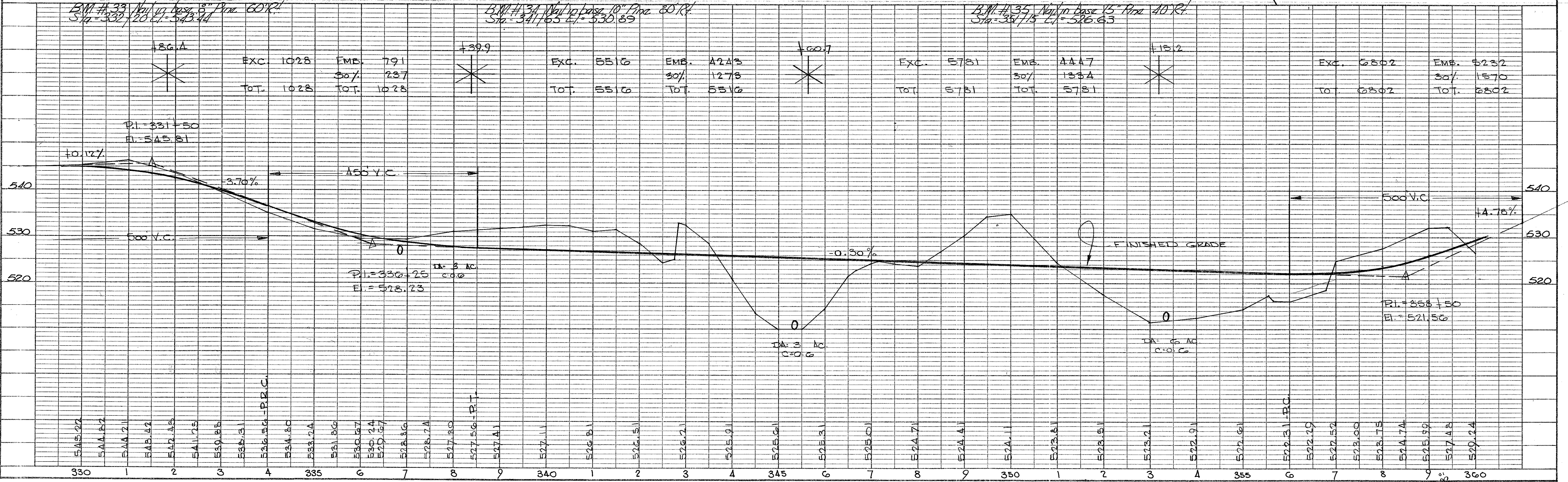
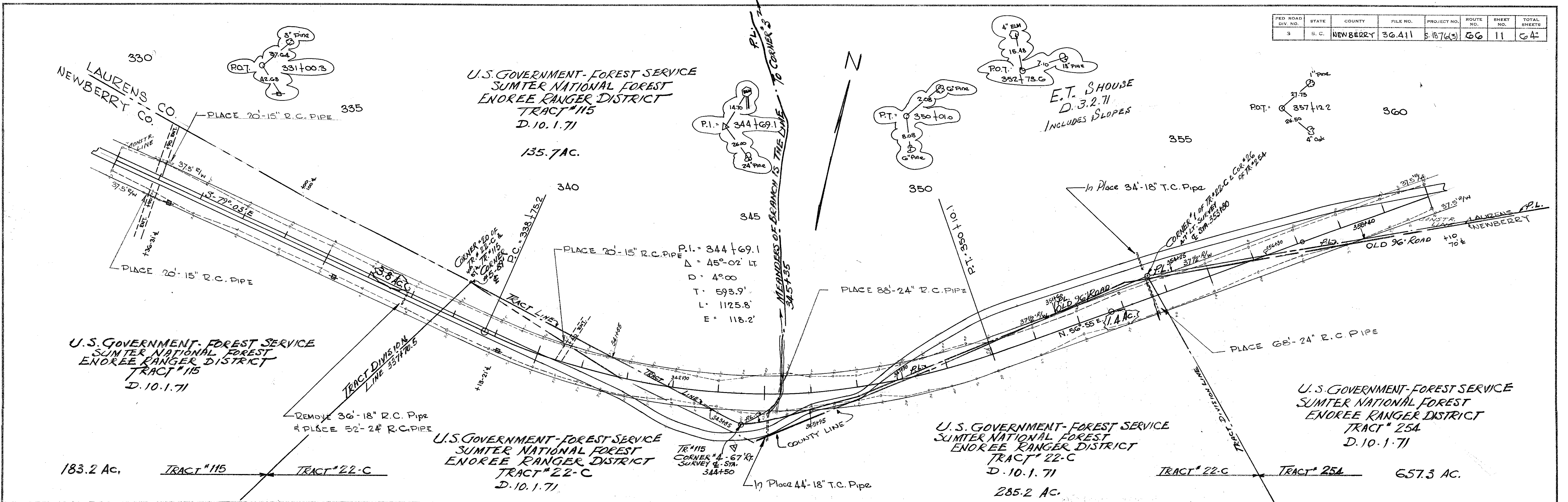
PROFILE
 SURVEYED BY
 DATE
 NOTE BOOK NO.
 GRADES CHECKED
 E. M. NOTED
 STRUCTURE NOTATIONS



FED. ROAD DIV. NO.	STATE	COUNTY	FILE NO.	PROJECT NO.	ROUTE NO.	SHEET NO.	TOTAL SHEETS
3	S. C.	NEWBERRY	36.411	518763	66	11	64

PLAN
 SURVEYED BY: _____ DATE: _____
 NOTE BOOK NO. _____
 ALIGNMENT CHECKED BY: _____
 RT. OF WAY CHECKED BY: _____

PROFILE
 SURVEYED BY: _____ DATE: _____
 PLOTTED BY: _____
 GRADES CHECKED BY: _____
 E. AT NOTED BY: _____
 STRUCTURE NOTATIONS BY: _____

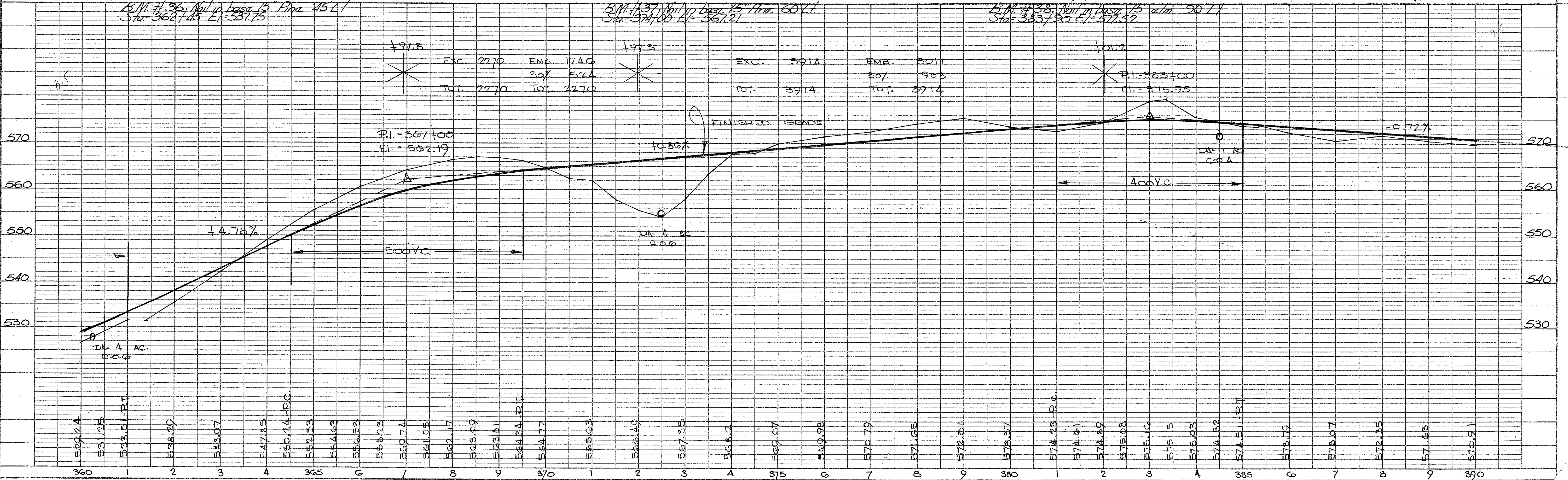
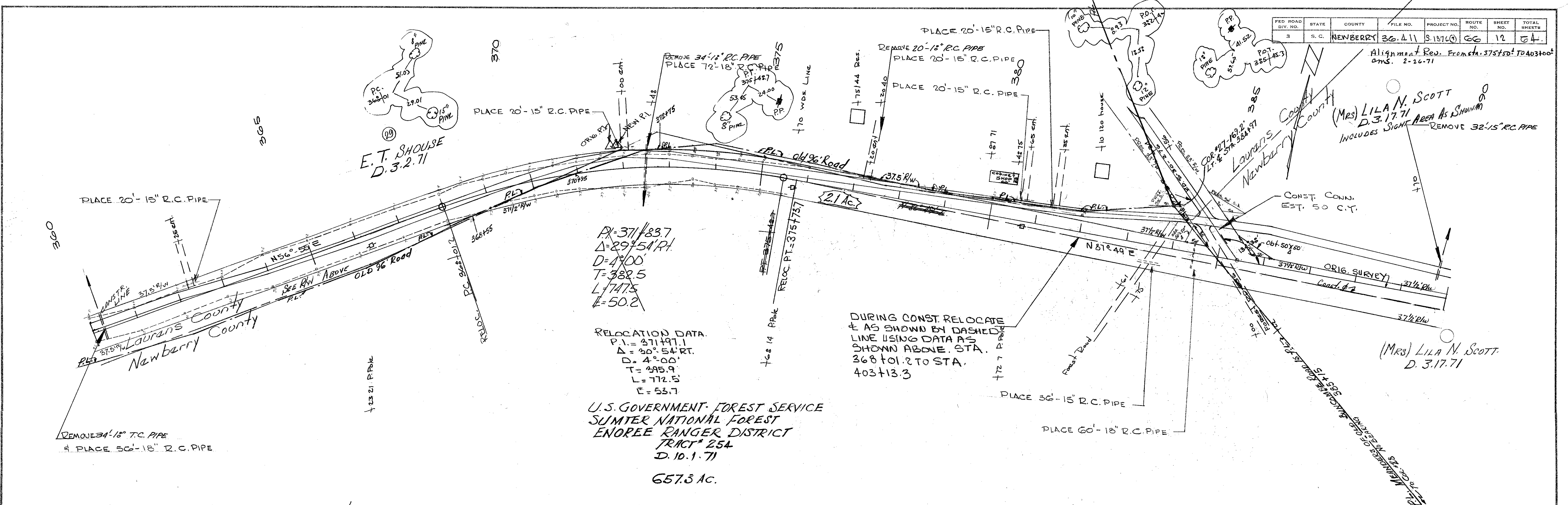


PLAN	SURVEYED	DATE
	BY	
	NOTE BOOK	
	ALIGNED CHECKED	
	RT. OF WAY CHECKED	
	NO.	

PROFILE	SURVEYED	DATE
	BY	
	NOTE BOOK	
	GRADES CHECKED	
	VERT. CURVES CHECKED	
	NO.	

FED. ROAD DIV. NO.	STATE	COUNTY	FILE NO.	PROJECT NO.	ROUTE NO.	SHEET NO.	TOTAL SHEETS
3	S.C.	NEWBERRY	36.411	S.1376	66	12	64

Alignment Rev. From Sta. 375+50 to 704+300
ams. 2-26-71

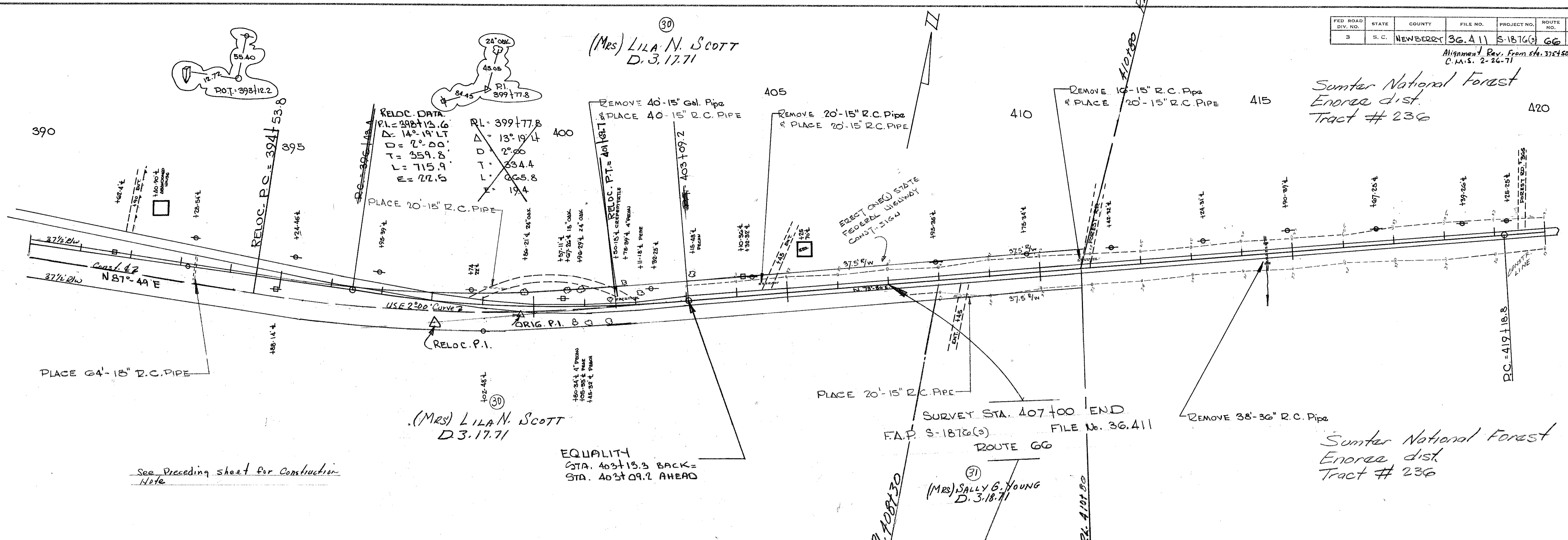


FED. ROAD DIV. NO.	STATE	COUNTY	FILE NO.	PROJECT NO.	ROUTE NO.	SHEET NO.	TOTAL SHEETS
3	S. C.	NEWBERN	36.411	S-1876(3)	66	13	64

Alignment Rev. From Sta. 375+50 to Sta. 403+00
C.M.S. 2-26-71

Sumter National Forest
Enoree dist.
Tract # 236

PLAN
SURVEYED, PLOTTED, ALIGNED, CHECKED, BY: OF W.M. DREGER, INC.



See Preceding sheet for Construction Note

EQUALITY
STA. 403+13.3 BACK =
STA. 403+09.2 AHEAD

SURVEY STA. 407+00 END
F.A.P. S-1876(3) FILE No. 36.411
ROUTE 66

Sumter National Forest
Enoree dist.
Tract # 236

PROFILE
SURVEYED, GRADES CHECKED, B.M.'S NOTED, STRUCTURE NOTATION CHECKED, BY: OF W.M. DREGER, INC.

