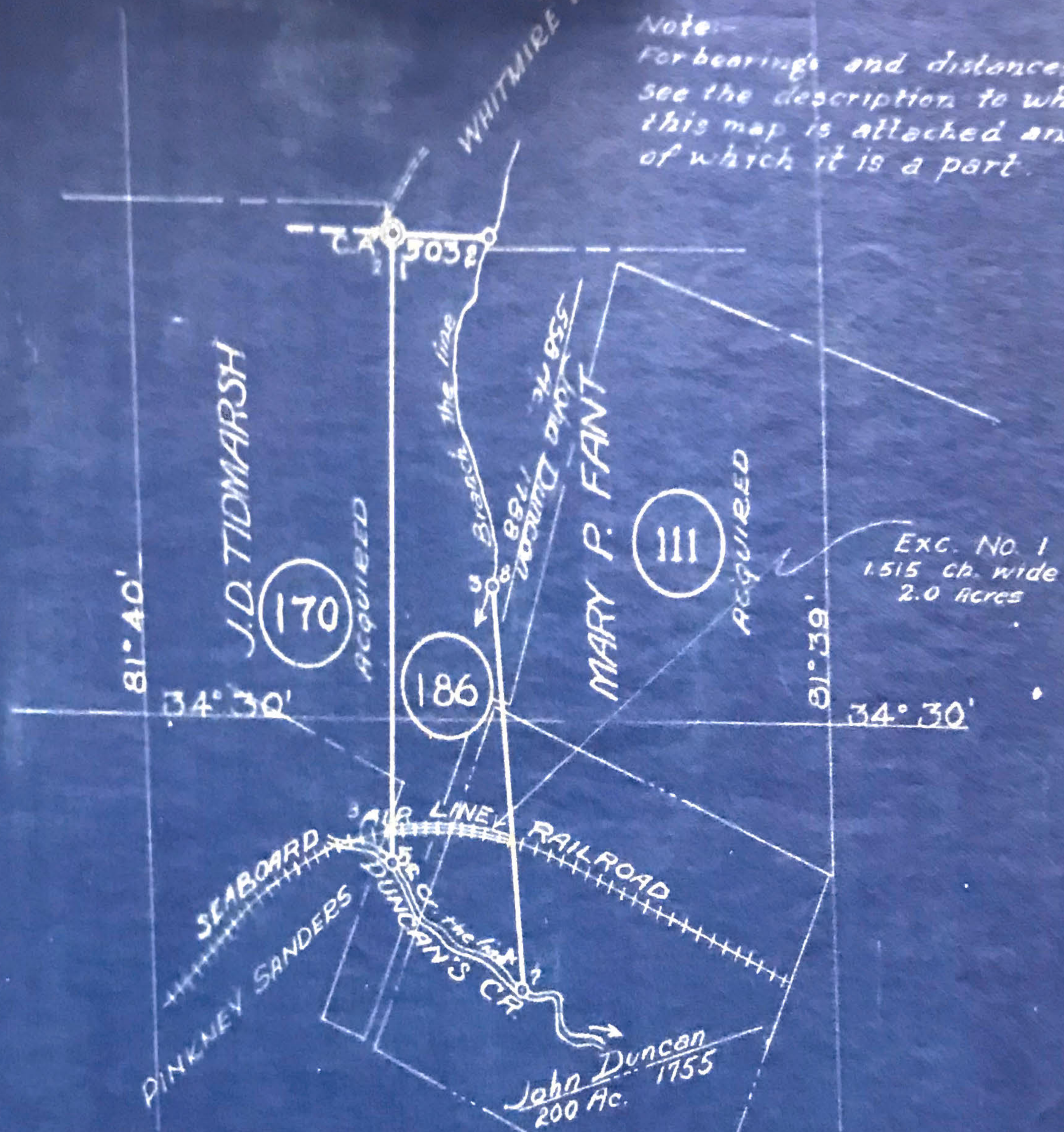




Note:-
For bearings and distances
see the description to which
this map is attached and
of which it is a part.



ENOREE PURCHASE UNIT
LAND OF
SAM J. HOGUE
NUMBER 186
70.6 ACRES
NEWBERRY COUNTY, SOUTH CAROLINA

SCALE
1 INCH = 20 CHAINS

SURVEYED BY
A.L. GLEN & PARTY
September, 1934

All bearings in this description are turned from the true meridian and all distances are expressed in chains.

This property is more particularly delineated on a plat thereof, compiled by the U. S. Forest Service, Enoree Purchase Unit, surveyed September 1934, said plat being hereby declared to be part and parcel of this conveyance.

BEGINNING at Corner 1, a stake set about 1.0 chain East of road, the second corner of J. D. Tidmarsh Tract (170), being also common to Whitwire Motor Company Tract. Set a F. S. standard concrete post marked 503-1936 alongside. A 36" oak bears N. 83° W., 1.20 chains distant; a fence post bears S. 10° W., 1.02 chain distant.

THENCE with Whitwire Motor Company Tract, S. 88° 30' E., 10.40 chains to Corner 2, a cedar post, old witnesses on branch, common to Whitwire Motor Company, being also in line 8-9 of Mary P. Fant Tract (111). Scribed bearing trees.

THENCE in a Southerly direction, down and with the meanders of said branch, the line of Tract 111, 34.0 chains to Corner 3, a point in the center of said branch, Corner 8 of Tract 111. A stake set on the bank of the branch as a witness corner bears S. 47° E., 0.06 chain distant.

THENCE with Tract 111, reversed, S. 3° 00' E., 39.0 chains to Corner 4, a point in the center of Duncan's Creek, the seventh corner of Tract 111. Set a stake on the bank of Duncan's Creek as a witness corner.

THENCE in a Northwesterly direction up and with the meanders of the center of Duncan's Creek, 19.2 chains to Corner 5, a point in the center of Duncan's Creek, common to Pinkney Sanders Tract, being also the third corner of Tract 170. A scribed 8" elm bears N. 67° E., 0.21 chain distant.

THENCE with Tract 170, reversed, N. 2° 05' E., 59.8 chains to the PLACE OF BEGINNING, containing seventy-two and six-tenths (72.6) acres, be the same more or less. There is excluded, however, from the foregoing acreage, Exception No. 1, of 2.0 acres, which when deducted will leave a net acreage of SEVENTY AND SIX-TENTHS (70.6) ACRES, BE THE SAME MORE OR LESS.

SAVING AND EXCEPTIONG, however, from the operation of this conveyance the following parcel of land which lies within the exterior boundaries of the tract of land hereinabove described:

EXCEPTION NO. 1

THE SEABOARD AIR LINE RAILWAY RIGHT-OF-WAY

All that certain tract or parcel of land being 1.515 chains (100 feet) in width, 0.757 chain on each side of center line of the main track, extending from its intersection with line 3-4 to its intersection with line 5-1, a distance of 13.5 chains, containing Two (2.0) Acres, be the same more or less.

TOGETHER with all and singular the rights, members, hereditaments and appurtenances to the said premises belonging, or in anywise incident or appertaining.