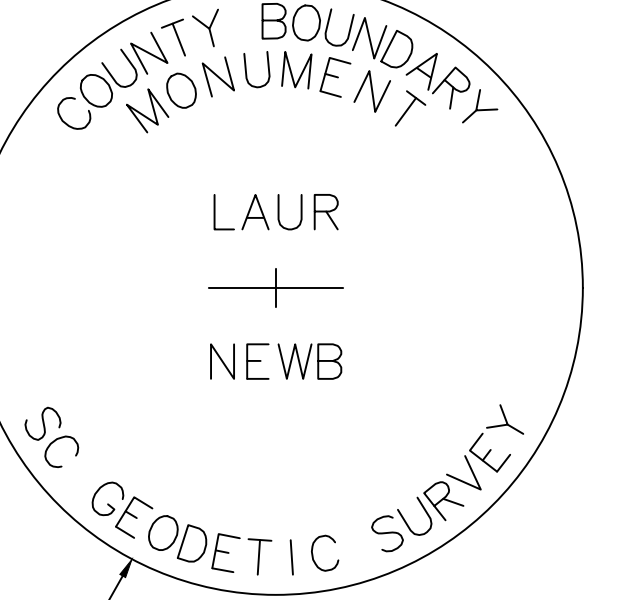


NOTES:

- 1. TRAVERSES ADJUSTED BY THE LEAST SQUARES ADJUSTMENT METHOD.
2. ALL DISTANCES ARE HORIZONTAL GRID DISTANCES.
3. SC GRID NAD 83 (2011) EPOCH 2010.00 BASIS OF BEARING DERIVED FROM SCGS NETWORK RTK (HORIZONTAL POSITIONAL ACCURACY = 0.07') USING GEOD MODEL GEOD18. UNITS ARE INTERNATIONAL FEET.
4. THE FIELD SURVEY WAS COMPLETED ON 01-04-2022.
5. LIDAR TOPOGRAPHY USED WAS PROVIDED BY THE SOUTH CAROLINA DEPARTMENT OF NATURAL RESOURCES.
6. U.S. GEOLOGICAL SURVEY QUADRANGLE MAPS USED: BUSH RIVER, SC 1970 & 2017; CROSS HILL, SC 1970 & 2017; DYSON, SC 1971 & 2017; JOANNA, SC 1971 & 2017; NEWBERRY NW, SC 1969 & 2017; SEDALIA, SC 1969 & 2017; SPARTANBURG, SC 1953.

REFERENCES:

- 1. CODE OF LAWS OF SOUTH CAROLINA 1976; VOLUME 1A; CHAPTER 3; BOUNDARIES OF EXISTING COUNTIES; SEC. 4-3-350 LAURENS COUNTY; SEC. 4-3-410 NEWBERRY COUNTY.
2. MAP TITLED "NEWBERRY DISTRICT, SOUTH CAROLINA"; SURVEYED BY M. COATE, 1820; IMPROVED FOR MILLS' ATLAS, 1825.
3. MAP TITLED "UNION DISTRICT, SOUTH CAROLINA"; SURVEYED BY R. THOMPSON, 1820; IMPROVED FOR MILLS' ATLAS 1825.
4. MAP TITLED "LAURENS DISTRICT, SOUTH CAROLINA"; SURVEYED BY HENRY GRAY D.S., 1820; IMPROVED FOR MILLS' ATLAS 1825.
5. MAP OF THE PROPOSED NEW COUNTIES OF BUTLER & NINETY-SIX BY D.B. MILLER, JR.; DATED 1883.
6. MAP OF LAND IN UNION LAURENS AND NEWBERRY COUNTIES SOUTH CAROLINA BELONGING TO WILLIAM COLEMAN BY H.C. WELBURN; SURVEYED SEPTEMBER 1922; UNION COUNTY MB. 1 PG. 191.
7. 1933 AERIAL PHOTOGRAPHS TAKEN WHEN THE AREA WAS BEING ACQUIRED BY THE US FOREST SERVICE; DOWNLOADED FROM NATIONAL SCIENCE FOUNDATION CALHOUN CRITICAL ZONE OBSERVATORY; CITATION: BRECHEISEN, ZACHARY S.; COOK, CHARLES W.; HARMON, M.A. (1933). "CZO DATASET: CALHOUN EXPERIMENTAL FOREST, SC - GIS/MAP DATA, PHOTOGRAPHIC IMAGERY (1933) - 1933 AERIAL IMAGERY COMPOSITE." RETRIEVED 07 FEB 2020, FROM http://criticalzone.org/calhoun/data/dataset/4324/
8. MAP OF PROPERTY OF E. W. ROBINETT BY DAN E. COLLINS; SURVEYED MAY 4, 1972; LAURENS COUNTY MB. 52 PG. 193.
9. MAP TITLED "PROPERTY OF CANAL WOOD CORP. FANT TRACT" BY DOCK H. PRICE; DATED SEPT. 1954; LAURENS COUNTY MB. 10 PG. 242.
10. MAP OF CANAL WOOD CORP. BY DOCK H. PRICE; SURVEYED MAY 31, 1954; NEWBERRY COUNTY MB. M. PG. 157.
11. MAP TITLED "SURVEY & PLAT PREPARED FOR: MARION GRAHAM" BY TOM ABRAHAM LAND SURVEYING; DATED OCT. 2, 1996; LAURENS COUNTY MB. A160 PG. 9.
12. MAP TITLED "ENOREE PURCHASE UNIT LAND OF MARY P. FANT NUMBER 111"; SURVEYED BY A.L. GLEN & PARTY; DATED JULY 1934; ALSO, THE "DESCRIPTION OF THE BOUNDARY OF THE MARY P. FANT TRACT (111)".
13. MAP TITLED "ENOREE PURCHASE UNIT LAND OF J.D. TIMMARSH ET AL NUMBER 170"; SURVEYED BY A.L. GLEN & PARTY; DATED SEPTEMBER 1934; ALSO, THE "DESCRIPTION OF THE BOUNDARY OF THE J. D. TIMMARSH, ET AL, TRACT (170)".
14. MAP TITLED "ENOREE PURCHASE UNIT LAND OF SAM J. HOUGE NUMBER 186"; SURVEYED BY A.L. GLEN & PARTY; DATED SEPTEMBER 1934; ALSO, THE "DESCRIPTION OF THE BOUNDARY OF THE SAM J. HOUGE TRACT (186)".
15. MAP TITLED "PLAT OF LAND OF G.E. & S.C. YOUNG" BY SAM BABB; SURVEYED JULY 26, 1952; NEWBERRY COUNTY MB. D16 PG. 7.
16. MAP TITLED "TRACT NO. 527 CATAWBA TIMBER COMPANY" BY J.W.-J.R. CRAWFORD; DATED JAN. 9, 1965; LAURENS COUNTY MB. 18 PG. 13; NEWBERRY COUNTY MB. U PG. 115.



TYPICAL DISK STAMPING (SET #8 REBAR WITH DISK)

LAURENS CO., SC

UNION CO., SC

SCALE: 1" = 1000' (GRAPHIC SCALE) SC GRID NAD 83 (2011) EPOCH 2010.00

Table with 4 columns: CORNER NUMBER, U.S. FOREST SERVICE PROPERTY CORNER DISK TRACT, CORNER NUMBER, U.S. FOREST SERVICE PROPERTY CORNER DISK TRACT.

Table with 4 columns: CORNER NUMBER, U.S. FOREST SERVICE PROPERTY CORNER DISK TRACT, CORNER NUMBER, U.S. FOREST SERVICE PROPERTY CORNER DISK TRACT.

Table with 4 columns: CORNER NUMBER, U.S. FOREST SERVICE PROPERTY CORNER DISK TRACT, CORNER NUMBER, U.S. FOREST SERVICE PROPERTY CORNER DISK TRACT.

Table with 4 columns: CORNER NUMBER, U.S. FOREST SERVICE PROPERTY CORNER DISK TRACT, CORNER NUMBER, U.S. FOREST SERVICE PROPERTY CORNER DISK TRACT.

Table with 4 columns: CORNER NUMBER, U.S. FOREST SERVICE PROPERTY CORNER DISK TRACT, CORNER NUMBER, U.S. FOREST SERVICE PROPERTY CORNER DISK TRACT.

Table with 4 columns: CORNER NUMBER, U.S. FOREST SERVICE PROPERTY CORNER DISK TRACT, CORNER NUMBER, U.S. FOREST SERVICE PROPERTY CORNER DISK TRACT.

Table with 4 columns: CORNER NUMBER, U.S. FOREST SERVICE PROPERTY CORNER DISK TRACT, CORNER NUMBER, U.S. FOREST SERVICE PROPERTY CORNER DISK TRACT.

Table with 4 columns: CORNER NUMBER, U.S. FOREST SERVICE PROPERTY CORNER DISK TRACT, CORNER NUMBER, U.S. FOREST SERVICE PROPERTY CORNER DISK TRACT.

Table with 4 columns: CORNER NUMBER, U.S. FOREST SERVICE PROPERTY CORNER DISK TRACT, CORNER NUMBER, U.S. FOREST SERVICE PROPERTY CORNER DISK TRACT.

Table with 4 columns: CORNER NUMBER, U.S. FOREST SERVICE PROPERTY CORNER DISK TRACT, CORNER NUMBER, U.S. FOREST SERVICE PROPERTY CORNER DISK TRACT.

Table with 4 columns: CORNER NUMBER, U.S. FOREST SERVICE PROPERTY CORNER DISK TRACT, CORNER NUMBER, U.S. FOREST SERVICE PROPERTY CORNER DISK TRACT.

Table with 4 columns: CORNER NUMBER, U.S. FOREST SERVICE PROPERTY CORNER DISK TRACT, CORNER NUMBER, U.S. FOREST SERVICE PROPERTY CORNER DISK TRACT.

Table with 4 columns: CORNER NUMBER, U.S. FOREST SERVICE PROPERTY CORNER DISK TRACT, CORNER NUMBER, U.S. FOREST SERVICE PROPERTY CORNER DISK TRACT.

Table with 4 columns: CORNER NUMBER, U.S. FOREST SERVICE PROPERTY CORNER DISK TRACT, CORNER NUMBER, U.S. FOREST SERVICE PROPERTY CORNER DISK TRACT.

Table with 4 columns: CORNER NUMBER, U.S. FOREST SERVICE PROPERTY CORNER DISK TRACT, CORNER NUMBER, U.S. FOREST SERVICE PROPERTY CORNER DISK TRACT.

Table with 4 columns: CORNER NUMBER, U.S. FOREST SERVICE PROPERTY CORNER DISK TRACT, CORNER NUMBER, U.S. FOREST SERVICE PROPERTY CORNER DISK TRACT.

Table with 4 columns: CORNER NUMBER, U.S. FOREST SERVICE PROPERTY CORNER DISK TRACT, CORNER NUMBER, U.S. FOREST SERVICE PROPERTY CORNER DISK TRACT.

Table with 4 columns: CORNER NUMBER, U.S. FOREST SERVICE PROPERTY CORNER DISK TRACT, CORNER NUMBER, U.S. FOREST SERVICE PROPERTY CORNER DISK TRACT.

Table with 4 columns: CORNER NUMBER, U.S. FOREST SERVICE PROPERTY CORNER DISK TRACT, CORNER NUMBER, U.S. FOREST SERVICE PROPERTY CORNER DISK TRACT.

Table with 4 columns: CORNER NUMBER, U.S. FOREST SERVICE PROPERTY CORNER DISK TRACT, CORNER NUMBER, U.S. FOREST SERVICE PROPERTY CORNER DISK TRACT.

Table with 4 columns: CORNER NUMBER, U.S. FOREST SERVICE PROPERTY CORNER DISK TRACT, CORNER NUMBER, U.S. FOREST SERVICE PROPERTY CORNER DISK TRACT.

Table with 4 columns: CORNER NUMBER, U.S. FOREST SERVICE PROPERTY CORNER DISK TRACT, CORNER NUMBER, U.S. FOREST SERVICE PROPERTY CORNER DISK TRACT.

Table with 4 columns: CORNER NUMBER, U.S. FOREST SERVICE PROPERTY CORNER DISK TRACT, CORNER NUMBER, U.S. FOREST SERVICE PROPERTY CORNER DISK TRACT.

Table with 4 columns: CORNER NUMBER, U.S. FOREST SERVICE PROPERTY CORNER DISK TRACT, CORNER NUMBER, U.S. FOREST SERVICE PROPERTY CORNER DISK TRACT.

Table with 4 columns: CORNER NUMBER, U.S. FOREST SERVICE PROPERTY CORNER DISK TRACT, CORNER NUMBER, U.S. FOREST SERVICE PROPERTY CORNER DISK TRACT.

Table with 4 columns: CORNER NUMBER, U.S. FOREST SERVICE PROPERTY CORNER DISK TRACT, CORNER NUMBER, U.S. FOREST SERVICE PROPERTY CORNER DISK TRACT.

Table with 4 columns: CORNER NUMBER, U.S. FOREST SERVICE PROPERTY CORNER DISK TRACT, CORNER NUMBER, U.S. FOREST SERVICE PROPERTY CORNER DISK TRACT.

Table with 4 columns: CORNER NUMBER, U.S. FOREST SERVICE PROPERTY CORNER DISK TRACT, CORNER NUMBER, U.S. FOREST SERVICE PROPERTY CORNER DISK TRACT.

Table with 4 columns: CORNER NUMBER, U.S. FOREST SERVICE PROPERTY CORNER DISK TRACT, CORNER NUMBER, U.S. FOREST SERVICE PROPERTY CORNER DISK TRACT.

Table with 4 columns: CORNER NUMBER, U.S. FOREST SERVICE PROPERTY CORNER DISK TRACT, CORNER NUMBER, U.S. FOREST SERVICE PROPERTY CORNER DISK TRACT.

Table with 4 columns: CORNER NUMBER, U.S. FOREST SERVICE PROPERTY CORNER DISK TRACT, CORNER NUMBER, U.S. FOREST SERVICE PROPERTY CORNER DISK TRACT.

Table with 4 columns: CORNER NUMBER, U.S. FOREST SERVICE PROPERTY CORNER DISK TRACT, CORNER NUMBER, U.S. FOREST SERVICE PROPERTY CORNER DISK TRACT.

Table with 4 columns: CORNER NUMBER, U.S. FOREST SERVICE PROPERTY CORNER DISK TRACT, CORNER NUMBER, U.S. FOREST SERVICE PROPERTY CORNER DISK TRACT.

Table with 4 columns: CORNER NUMBER, U.S. FOREST SERVICE PROPERTY CORNER DISK TRACT, CORNER NUMBER, U.S. FOREST SERVICE PROPERTY CORNER DISK TRACT.

Table with 4 columns: CORNER NUMBER, U.S. FOREST SERVICE PROPERTY CORNER DISK TRACT, CORNER NUMBER, U.S. FOREST SERVICE PROPERTY CORNER DISK TRACT.

LAURENS CO., SC

UNION CO., SC

SCALE: 1" = 1000' (GRAPHIC SCALE) SC GRID NAD 83 (2011) EPOCH 2010.00

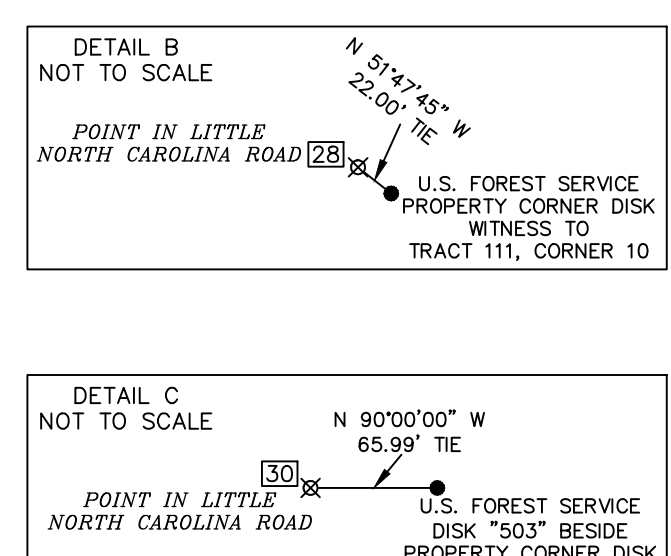
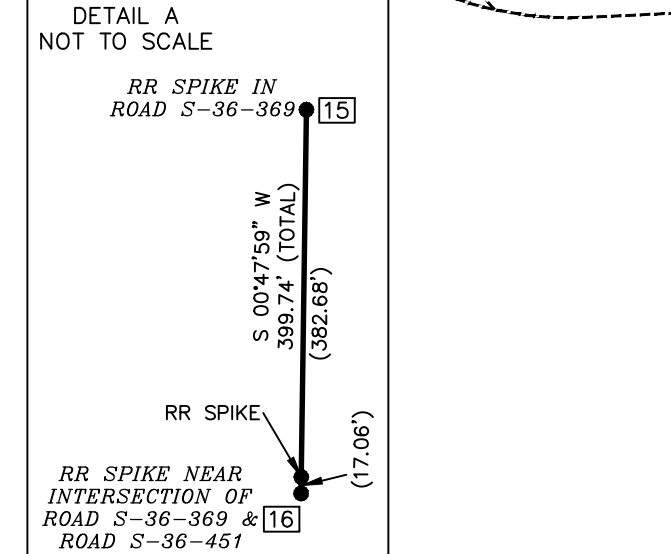
LAURENS CO., SC

NEWBERRY CO., SC

LEGEND

- EXISTING CORNER AS DESCRIBED (circle with cross)
SET CORNER AS DESCRIBED (circle)
NO POINT SET (square)
COUNTY CORNER DESIGNATION (dashed line)
COUNTY LINE AS SURVEYED (solid line)
TIE LINE (dash-dot line)
APPROXIMATE ROAD (dashed line)
APPROXIMATE RIVER, CREEK OR BRANCH (dotted line)
APPROXIMATE LAND GRANT (dash-dot-dot line)
APPROXIMATE MAP (long dashed line)

COUNTY CORNER TABLE SC GRID NAD 83 (2011) EPOCH 2010.00. Table with 4 columns: CORNER, NORTH, EAST, LONG (W) and 4 columns: BEARING, DISTANCE.

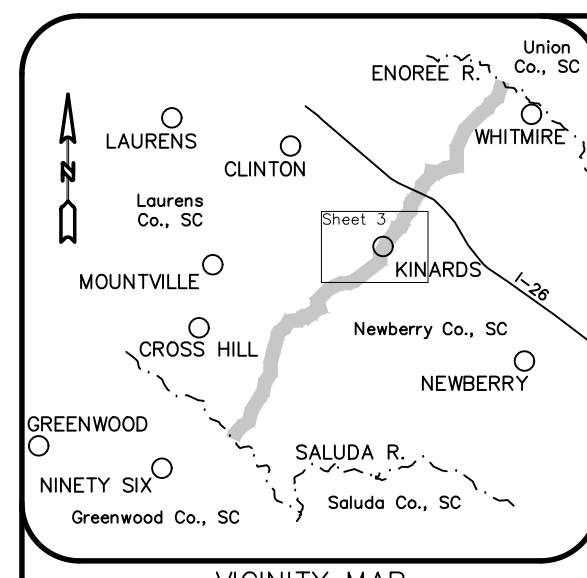


MATCH LINE

SHEET 1 SHEET 2

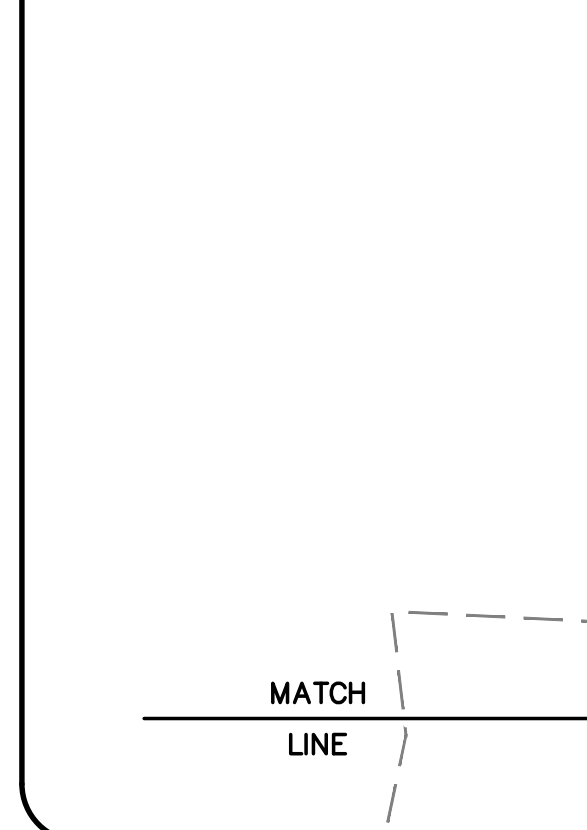
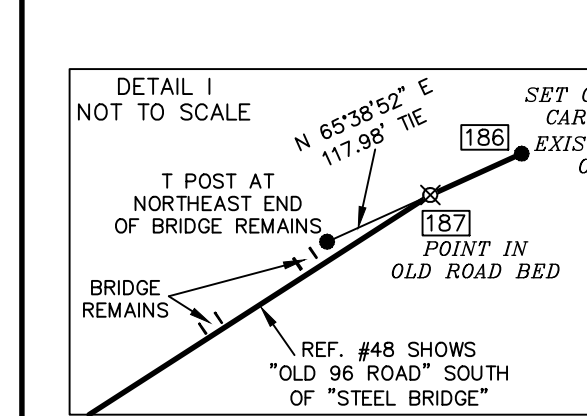
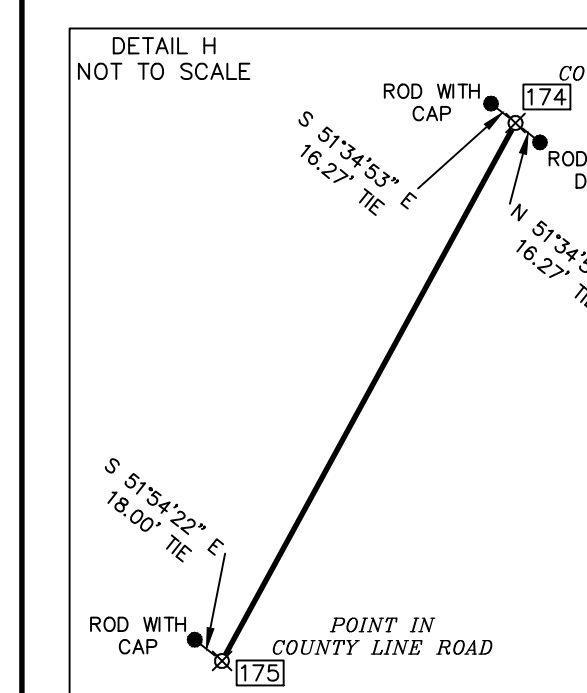
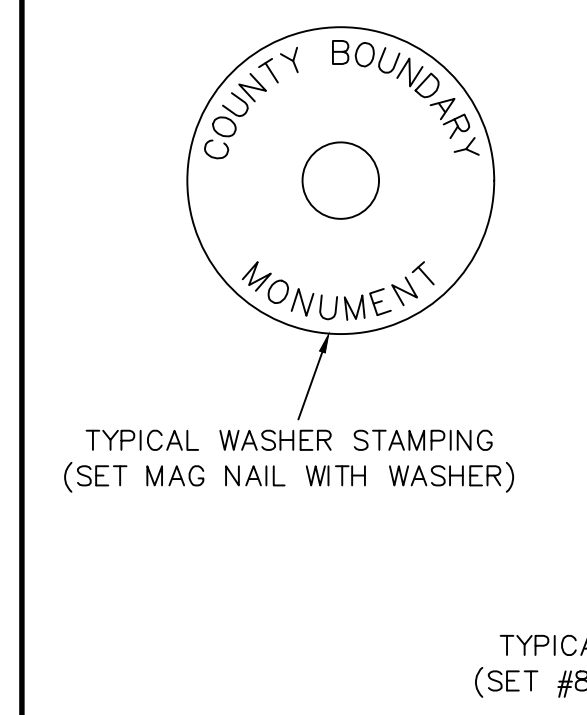
PRELIMINARY PLAT NOT FOR RECORDATION, CONVEYANCES OR SALES

Sheet 1 of 6. Re-Establishment of the Laurens County and Newberry County Boundary from the Enoree River Southwest to the Saluda River. LAURENS COUNTY, S.C. NEWBERRY COUNTY, S.C. SURVEY FOR: SOUTH CAROLINA GEODETIC SURVEY... DATE: 04-29-2022... COMPLETED BY: RAP... CESI Civil - Geotechnical - Surveying... S.C. CERTIFICATE OF AUTHORIZATION NO. C00591



REFERENCES:

- 1. CODE OF LAWS OF SOUTH CAROLINA 1976; VOLUME 1A; CHAPTER 3 BOUNDARIES OF EXISTING COUNTIES; SEC. 4-3-350 LAURENS COUNTY; SEC. 4-3-410 NEWBERRY COUNTY.
2. MAP TITLED "NEWBERRY DISTRICT, SOUTH CAROLINA", SURVEYED BY M. COATE, 1820; IMPROVED FOR MILLS' ATLAS, 1825.
3. MAP TITLED "UNION DISTRICT, SOUTH CAROLINA", SURVEYED BY R. THOMPSON, 1820; IMPROVED FOR MILLS' ATLAS, 1825.
4. MAP TITLED "LAURENS DISTRICT, SOUTH CAROLINA", SURVEYED BY HENRY GRAY D.S., 1820; IMPROVED FOR MILLS' ATLAS, 1825.
5. MAP OF THE PROPOSED NEW COUNTIES OF BUTLER & NINETY-SIX BY D.B. MILLER, JR.; DATED 1883.
6. MAP TITLED "ENOREE PURCHASE UNIT LAND OF T.R. BLACKWELL ESTATE NUMBER 19", SURVEYED BY A.L. GLEN & PARTY; DATED JULY 1934; ALSO, THE "DESCRIPTION OF THE BOUNDARY OF THE T. R. BLACKWELL ESTATE TRACT (19)".
7. MAP TITLED "ENOREE PURCHASE UNIT LAND OF FRED H. DOMINICK NUMBER 14", SURVEYED BY A.L. GLEN & PARTY; DATED JULY 1934; ALSO, THE "DESCRIPTION OF THE BOUNDARY OF THE FRED H. DOMINICK TRACT (14)".
8. MAP TITLED "ENOREE PURCHASE UNIT LAND OF MRS. K. K. SMITH et al NUMBER 36", SURVEYED BY A.L. GLEN & PARTY; DATED AUGUST 1934; ALSO, THE "DESCRIPTION OF THE BOUNDARY OF THE MRS. K. K. SMITH ET AL TRACT (36)".
9. MAP OF 4.9 SQ. MI. CUT OFF OF THE GOLDVILLE SCHOOL DISTRICT; BY J. ROY CRAWFORD; DATED OCTOBER 1916; LAURENS COUNTY MB. 1 PG. 47.
10. MAP OF 770 ACRES FOR JAMES KINCAID; DATED JANUARY 10, 1792.
11. MAP OF 1000 ACRES FOR JAMES RAVENEL; DATED NOVEMBER 5, 1771.
12. LAURENS COUNTY MB. 34 PG. 262; DATED 07-02-1960.
13. MAP TITLED "MRS. CAROLINE S. SMITH PLAT OF LAND & LOTS" BY J.R. CRAWFORD; DATED MAY 1, 1957; LAURENS COUNTY MB. 11 PG. 161; NEWBERRY COUNTY MB. 0 PG. 23.
14. MAP TITLED "MAP OF LAND BELONGING TO FIRST CAROLINAS JOINT 'STOCK LAND BANK' BY A.J. SCHWISLER; DATED AUG. 29, 1936; NEWBERRY COUNTY MB. 1 PG. 69.
15. MAP TITLED "VAN C. OXNER LAND" BY J.R. CRAWFORD; DATED MAY 8, 1934; LAURENS COUNTY MB. 35 PG. 222.
16. MAP TITLED "SURVEY FOR VANNOIR C. OXNER, JR." BY ADTECH SURVEYING, INC.; DATED JULY 15, 1999; LAURENS COUNTY MB. A312 PG. 7.
17. MAP TITLED "KINARD REALTY CO." BY CLAUDE E. JOHNSON; DATED 09-16-1977; LAURENS COUNTY MB. 35 PG. 216.
18. MAPS OF THE ESTATE OF DR. CHARLES F. GARY CONTAINING 580 ACRES AND 722 ACRES; DATED NOVEMBER 1837.
19. MAP OF TRACT 5 OF THE LANDS OF HENRY O HENSON BY JAMES F. GLENN; DATED SEPTEMBER 1902; NEWBERRY COUNTY MB. D PG. 103.
20. MAP TITLED "PLAT PROPERTY OF JOHN EARL SMITH" BY PICKELL & PICKELL, ENGINEERS; DATED DEC. 7, 1944; LAURENS COUNTY MB. 4 PG. 29.
21. MAP TITLED "PLAT PROPERTY OF I.M. SMITH ESTATE" BY HEANER ENGR. CO. INC.; LAST REVISED MAR. 9, 1981; LAURENS COUNTY MB. 42 PG. 187; NEWBERRY COUNTY MB. AX PG. 86.

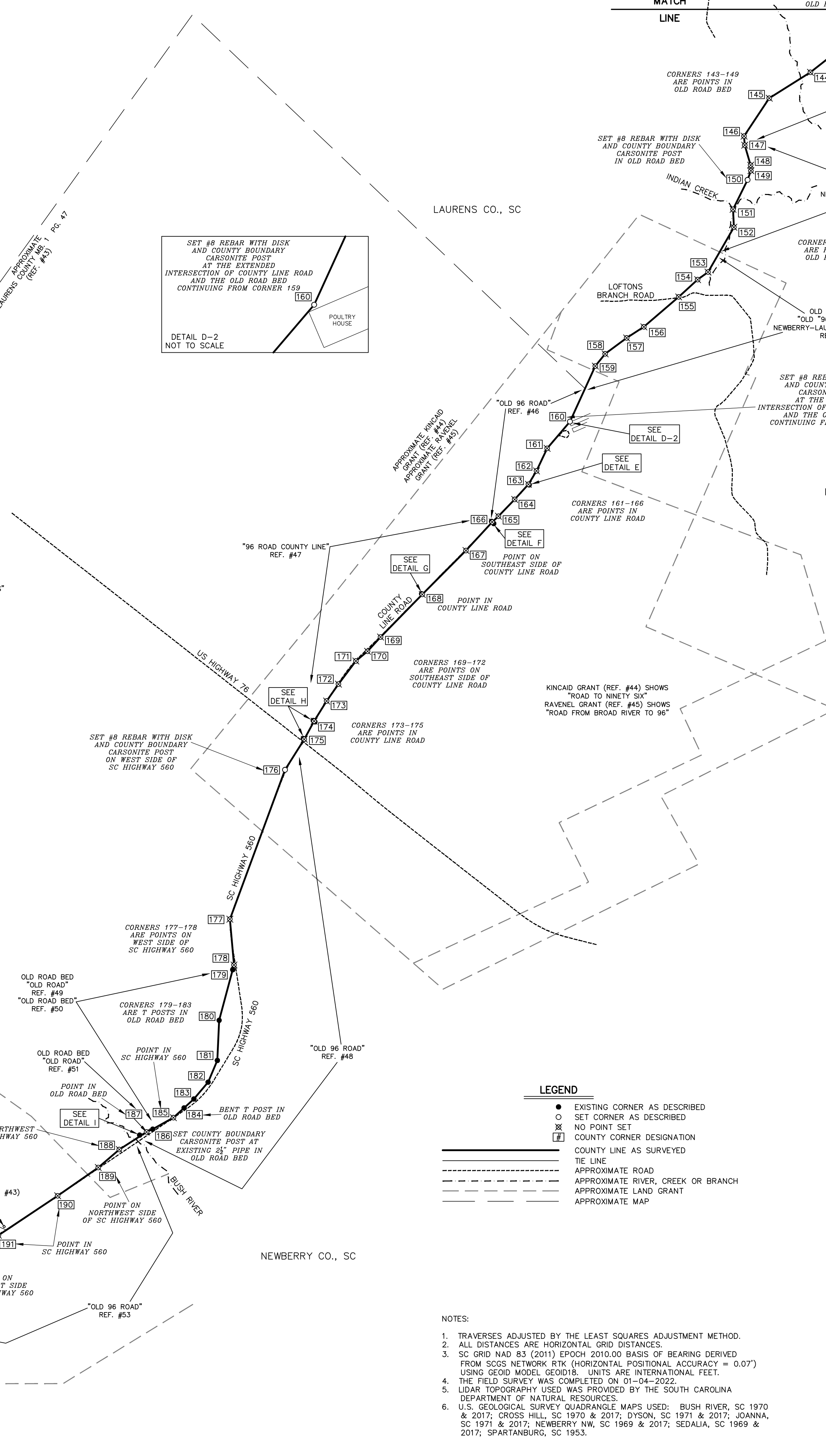


ESTATE OF DR. CHARLES F. GARY (REF. #52) SHOWS "OLD NINETY-SIX ROAD"

LAURENS COUNTY MB. 1 PG. 47 (REF. #43) SHOWS "NINETY-SIX ROAD" AS "THE DIVIDING LINE BETWEEN LAURENS AND NEWBERRY COUNTIES"

LAURENS CO., SC

NEWBERRY CO., SC



COUNTY CORNER TABLE SC GRID NAD 83 (2011) EPOCH 2010.00 and COUNTY LINE TABLE SC GRID NAD 83 (2011) EPOCH 2010.00. Tables listing corner coordinates (North, East, Lat, Long) and line segment bearings and distances.

- LEGEND:
● EXISTING CORNER AS DESCRIBED
○ SET CORNER AS DESCRIBED
x NO POINT SET
COUNTY CORNER DESIGNATION
--- COUNTY LINE AS SURVEYED
--- TIE LINE
--- APPROXIMATE ROAD
--- APPROXIMATE RIVER, CREEK OR BRANCH
--- APPROXIMATE LAND GRANT
--- APPROXIMATE MAP

- NOTES:
1. TRAVERSES ADJUSTED BY THE LEAST SQUARES ADJUSTMENT METHOD.
2. ALL DISTANCES ARE HORIZONTAL GRID DISTANCES.
3. SC GRID NAD 83 (2011) EPOCH 2010.00 BASIS OF BEARING DERIVED FROM SCGS NETWORK RTK (HORIZONTAL POSITIONAL ACCURACY = 0.07') USING GEOID MODEL GEOID18. UNITS ARE INTERNATIONAL FEET.
4. THE FIELD SURVEY WAS COMPLETED ON 01-04-2022.
5. LIDAR TOPOGRAPHY USED WAS PROVIDED BY THE SOUTH CAROLINA DEPARTMENT OF NATURAL RESOURCES.
6. U.S. GEOLOGICAL SURVEY QUADRANGLE MAPS USED: BUSH RIVER, SC 1970 & 2017; CROSS HILL, SC 1970 & 2017; DYSON, SC 1971 & 2017; JOANNA, SC 1971 & 2017; NEWBERRY NW, SC 1969 & 2017; SEDALIA, SC 1969 & 2017; SPARTANBURG, SC 1955.

PRELIMINARY PLAT NOT FOR RECORDATION, CONVEYANCES OR SALES

Sheet 3 of 6
Re-Establishment of the Laurens County and Newberry County Boundary from the Enoree River Southwest to the Saluda River
LAURENS COUNTY, S.C.
NEWBERRY COUNTY, S.C.
SURVEY FOR: SOUTH CAROLINA GEODETIC SURVEY
DATE: 04-29-2022
SCALE: 1" = 1000'
JOB NO.: 180376.000
ACAD FILE: SCGJD2011.dwg
COMPUTED BY: RAP
DRAWN BY: RAP
CHECKED BY: FAR
Civil - Geotechnical - Surveying
45 SPRING STREET SW CONCORD (704) 786-5404
CONCORD, NC 28025 FAX (704) 786-7454
S.C. CERTIFICATE OF AUTHORIZATION NO. C00591

