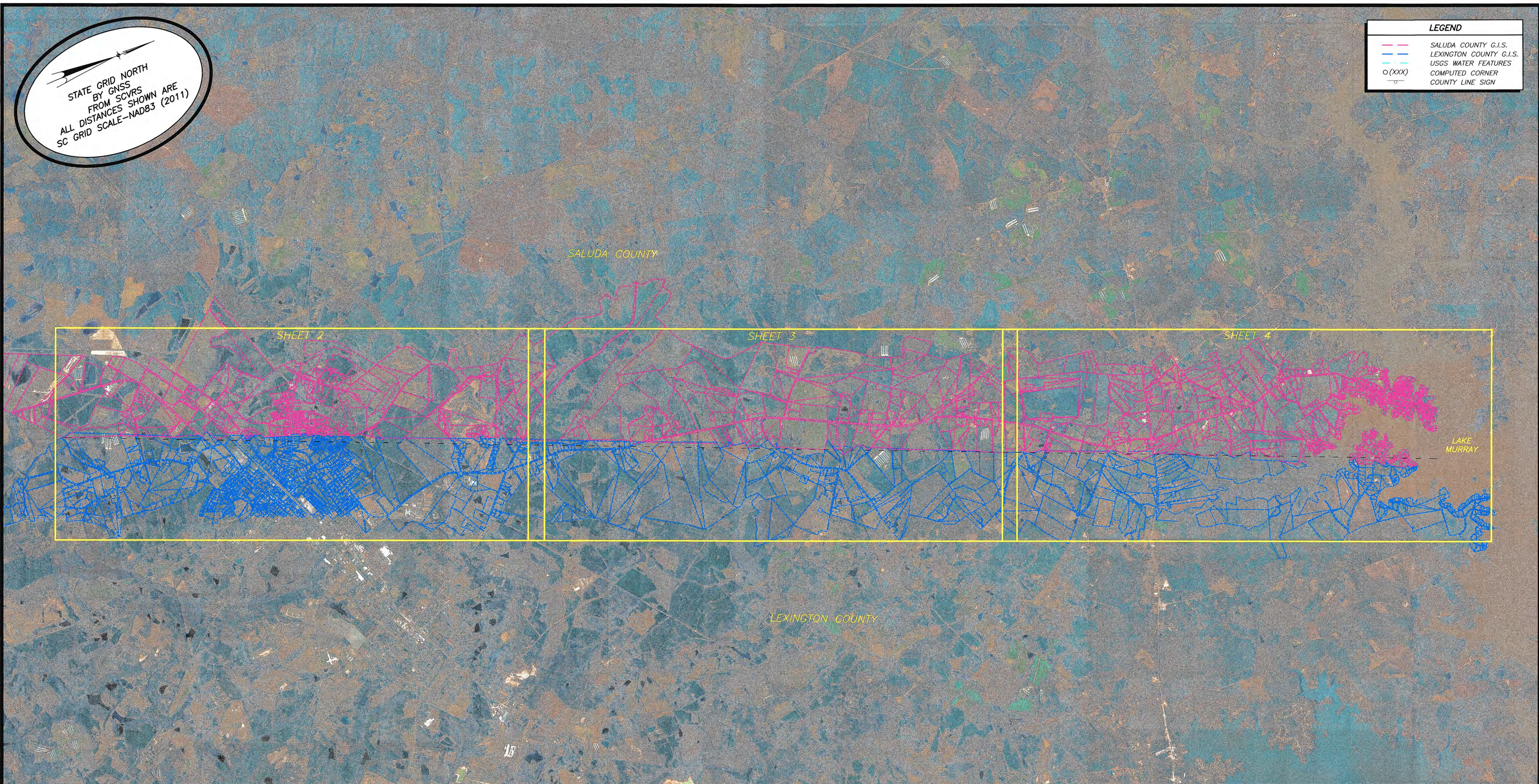


STATE GRID NORTH
 BY GNSS
 FROM SCVRS
 ALL DISTANCES SHOWN ARE
 SC GRID SCALE--NAD83 (2011)

LEGEND	
	SALUDA COUNTY G.I.S.
	LEXINGTON COUNTY G.I.S.
	USGS WATER FEATURES
	COMPUTED CORNER
	COUNTY LINE SIGN



TOTAL LENGTH OF LEXINGTON AND SALUDA COMMON BOUNDARY
 FEET: 77,973.16
 MILES: 14.77
 GRID BEARING: N 22°51'37" E

DISTANCE TO LEXINGTON COUNTY COURTHOUSE
 PT 101 (20.56 MILES)
 PT 112,694 (15.11 MILES)

DISTANCE TO SALUDA COUNTY COURTHOUSE
 PT 101 (14.31 MILES)
 PT 112,694 (17.90 MILES)

MAP OF SURVEY
 FOR THE RE-ESTABLISHMENT OF THE
**LEXINGTON AND SALUDA
 COMMON BOUNDARY**
 LEXINGTON AND SALUDA COUNTY, SOUTH CAROLINA
 SEPTEMBER 21, 2022
 SCALE: 1 INCH = 5,000 FEET

0 5,000' 10,000' 15,000' 20,000' 25,000' 30,000'
 SURVEYED BY GLENN ASSOCIATES SURVEYING, INC.
 P.O. BOX 12 JENKINSVILLE, S.C. 29065 telephone (803) 345-5297

BRIAN B. BONDS; S.C.P.L.S. # 28582

I HEREBY STATE THAT TO THE BEST OF MY PROFESSIONAL KNOWLEDGE, INFORMATION, AND BELIEF, THE SURVEY SHOWN HEREON WAS MADE IN ACCORDANCE WITH THE REQUIREMENTS OF THE STANDARDS OF PRACTICE MANUAL FOR SURVEYING IN SOUTH CAROLINA, AND MEETS OR EXCEEDS THE REQUIREMENTS FOR A CLASS "A" SURVEY AS SPECIFIED THEREIN.

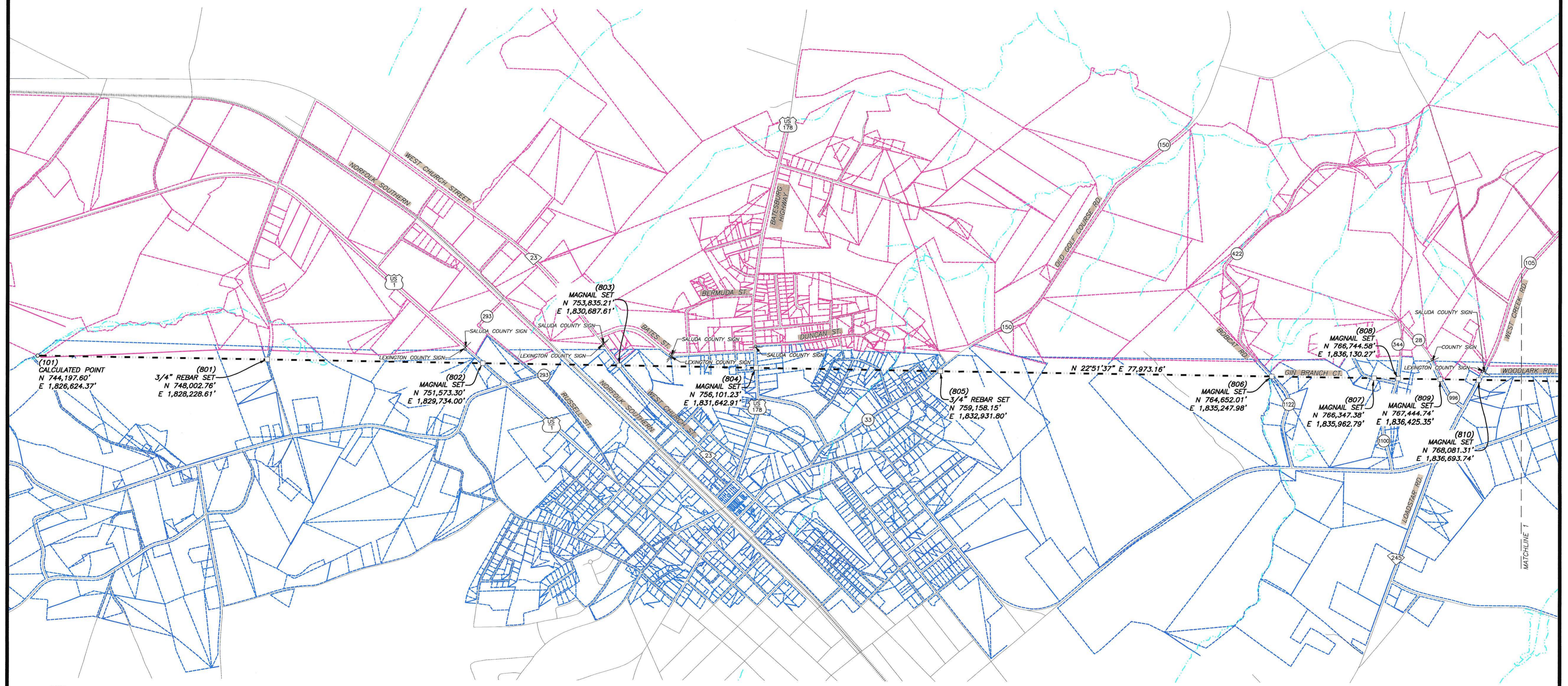
REVISION SCHEDULE			
NO.	DATE	DESCRIPTION	CHECKED

NOTES:
 NO PRINT OR ELECTRONIC COPY OF THIS PLAT IS
 CERTIFIED BY GLENN ASSOCIATES SURVEYING, INC. UNLESS
 IT BEARS THE ORIGINAL SIGNATURE AND IMPRESSION SEAL
 OF THE RESPONSIBLE SURVEYOR SHOWN HEREON.

CERTIFICATION DATE: OCTOBER 5, 2022

STATE GRID NORTH
BY GNSS
FROM SCVRS
NAD83 (2011)

LEGEND	
	SALUDA COUNTY G.I.S.
	LEXINGTON COUNTY G.I.S.
	USGS WATER FEATURES
	COMPUTED CORNER
	COUNTY LINE SIGN



DRAWING BY TOMMY MADDALENA

MAP OF SURVEY
FOR THE RE-ESTABLISHMENT OF THE
**LEXINGTON AND SALUDA
COMMON BOUNDARY**
LEXINGTON AND SALUDA COUNTY, SOUTH CAROLINA
SEPTEMBER 21, 2022
SCALE: 1 INCH = 800 FEET

0 800' 1,600' 2,400' 3,200' 4,000' 4,800'

SURVEYED BY GLENN ASSOCIATES SURVEYING, INC.
P.O. BOX 12 JENKINSVILLE, S.C. 29065 telephone (803) 345-5297

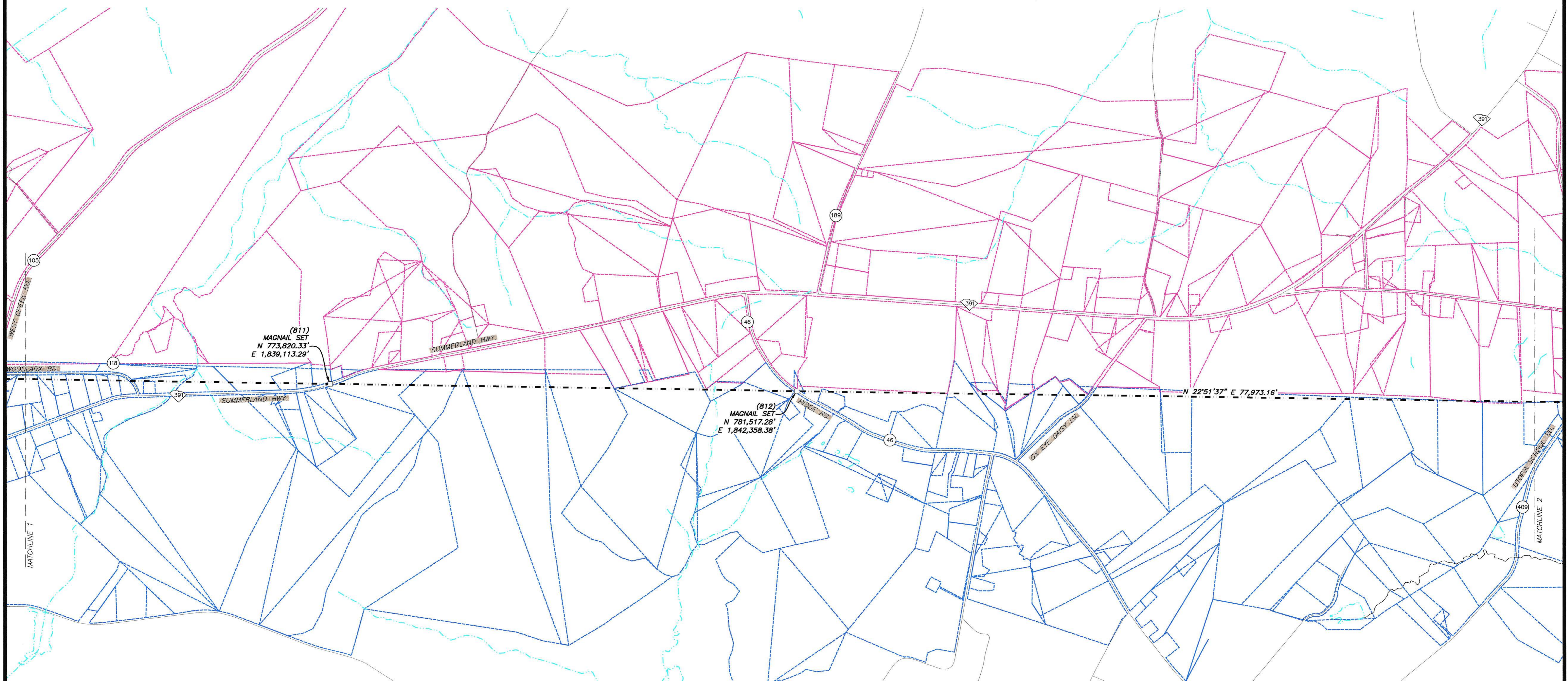
SURVEYOR'S SEAL			C.O.A. SEAL			REVISION SCHEDULE		
NO.	DATE	DESCRIPTION	CHECKED	NO.	DATE	DESCRIPTION	CHECKED	

NOTES:
NO PRINT OR ELECTRONIC COPY OF THIS PLAT IS
CERTIFIED BY GLENN ASSOCIATES SURVEYING, INC. UNLESS
IT BEARS THE ORIGINAL SIGNATURE AND IMPRESSION SEAL
OF THE RESPONSIBLE SURVEYOR SHOWN HEREON.

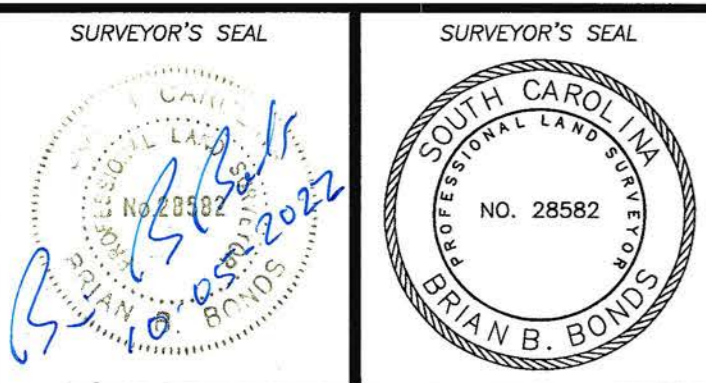
BRIAN B. BONDS, S.C.P.L.S. # 28582
I HEREBY STATE THAT TO THE BEST OF MY PROFESSIONAL KNOWLEDGE, INFORMATION, AND BELIEF, THE SURVEY SHOWN HEREON WAS MADE IN ACCORDANCE WITH THE REQUIREMENTS OF THE STANDARDS OF PRACTICE MANUAL FOR SURVEYING IN SOUTH CAROLINA, AND MEETS OR EXCEEDS THE REQUIREMENTS FOR A CLASS "A" SURVEY AS SPECIFIED THEREIN.

STATE GRID NORTH
BY GNSS
FROM SCVRS
NAD83 (2011)

LEGEND	
	SALUDA COUNTY G.I.S.
	LEXINGTON COUNTY G.I.S.
	USGS WATER FEATURES
	COMPUTED CORNER
	COUNTY LINE SIGN



DRAWING BY TOMMY MADDALENA



REVISION SCHEDULE			
NO.	DATE	DESCRIPTION	CHECKED

NOTES:
NO PRINT OR ELECTRONIC COPY OF THIS PLAT IS
CERTIFIED BY GLENN ASSOCIATES SURVEYING, INC. UNLESS
IT BEARS THE ORIGINAL SIGNATURE AND IMPRESSION SEAL
OF THE RESPONSIBLE SURVEYOR SHOWN HEREON.

MAP OF SURVEY
FOR THE RE-ESTABLISHMENT OF THE
**LEXINGTON AND SALUDA
COMMON BOUNDARY**
LEXINGTON AND SALUDA COUNTY, SOUTH CAROLINA
SEPTEMBER 21, 2022
SCALE: 1 INCH = 800 FEET

0 800' 1,600' 2,400' 3,200' 4,000' 4,800'

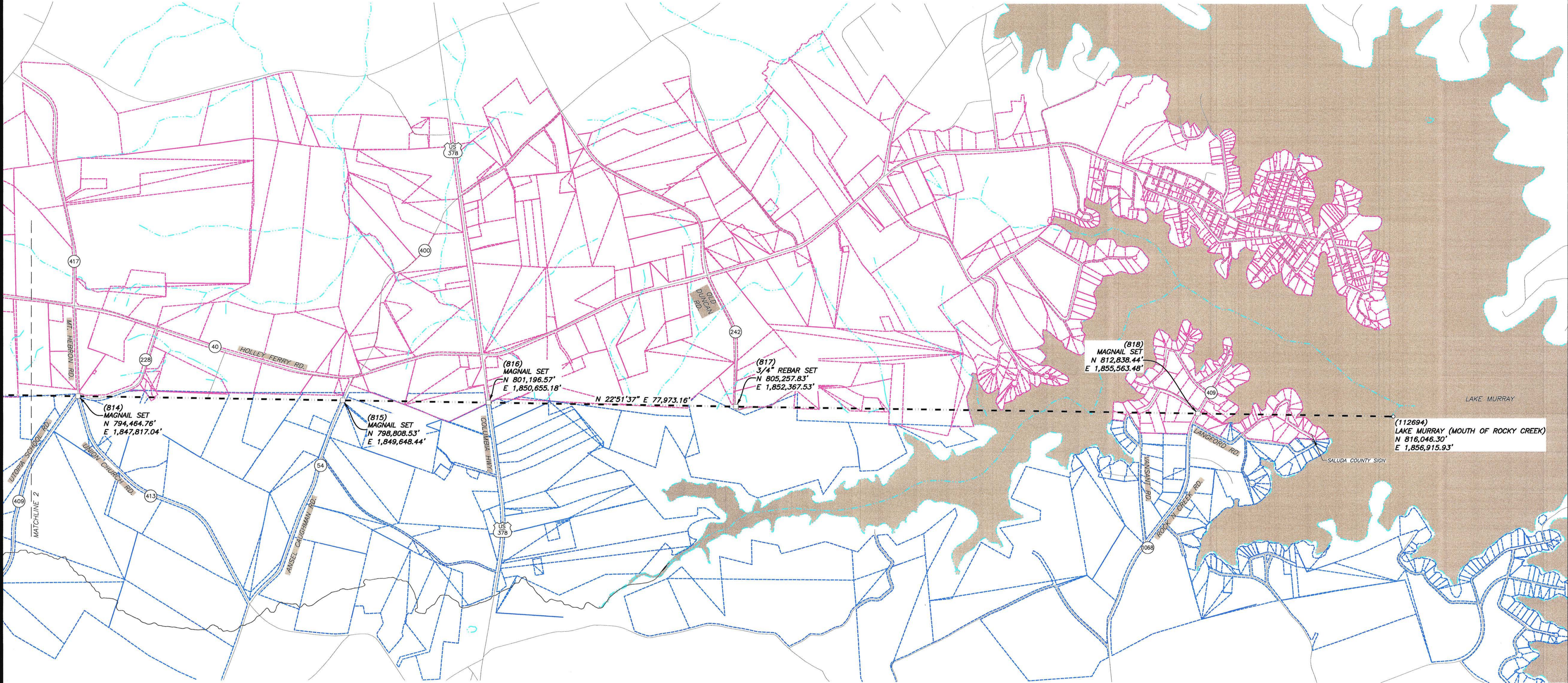
SURVEYED BY GLENN ASSOCIATES SURVEYING, INC.
P.O. BOX 12 JENKINSVILLE, S.C. 29065 telephone (803) 345-5297

BRIAN B. BONDS, S.C.P.L.S. # 28582

I HEREBY STATE THAT TO THE BEST OF MY PROFESSIONAL KNOWLEDGE, INFORMATION, AND BELIEF, THE SURVEY SHOWN HEREON WAS MADE IN ACCORDANCE WITH THE REQUIREMENTS OF THE STANDARDS OF PRACTICE MANUAL FOR SURVEYING IN SOUTH CAROLINA, AND MEETS OR EXCEEDS THE REQUIREMENTS FOR A CLASS "A" SURVEY AS SPECIFIED THEREIN.

STATE GRID NORTH
BY GNSS
FROM SCVRS
NAD83 (2011)

LEGEND	
	SALUDA COUNTY G.I.S.
	LEXINGTON COUNTY G.I.S.
	USGS WATER FEATURES
	COMPUTED CORNER
	COUNTY LINE SIGN



DRAWING BY TOMMY MADDALENA

SURVEYOR'S SEAL 	C.O.A. SEAL 	REVISION SCHEDULE			
		NO.	DATE	DESCRIPTION	CHECKED

NOTES:
NO PRINT OR ELECTRONIC COPY OF THIS PLAT IS
CERTIFIED BY GLENN ASSOCIATES SURVEYING, INC. UNLESS
IT BEARS THE ORIGINAL SIGNATURE AND IMPRESSION SEAL
OF THE RESPONSIBLE SURVEYOR SHOWN HEREON.

MAP OF SURVEY
FOR THE RE-ESTABLISHMENT OF THE
**LEXINGTON AND SALUDA
COMMON BOUNDARY**
LEXINGTON AND SALUDA COUNTY, SOUTH CAROLINA
SEPTEMBER 21, 2022
SCALE: 1 INCH = 800 FEET

SURVEYED BY GLENN ASSOCIATES SURVEYING, INC.
P.O. BOX 12 JENKINSVILLE, S.C. 29065 telephone (803) 345-5297
BRIAN B. BONDS; S.C.P.L.S. # 28582
I HEREBY STATE THAT TO THE BEST OF MY PROFESSIONAL KNOWLEDGE, INFORMATION, AND BELIEF, THE SURVEY SHOWN HEREON WAS MADE IN ACCORDANCE WITH THE REQUIREMENTS OF THE STANDARDS OF PRACTICE MANUAL FOR SURVEYING IN SOUTH CAROLINA, AND MEETS OR EXCEEDS THE REQUIREMENTS FOR A CLASS "A" SURVEY AS SPECIFIED THEREIN.