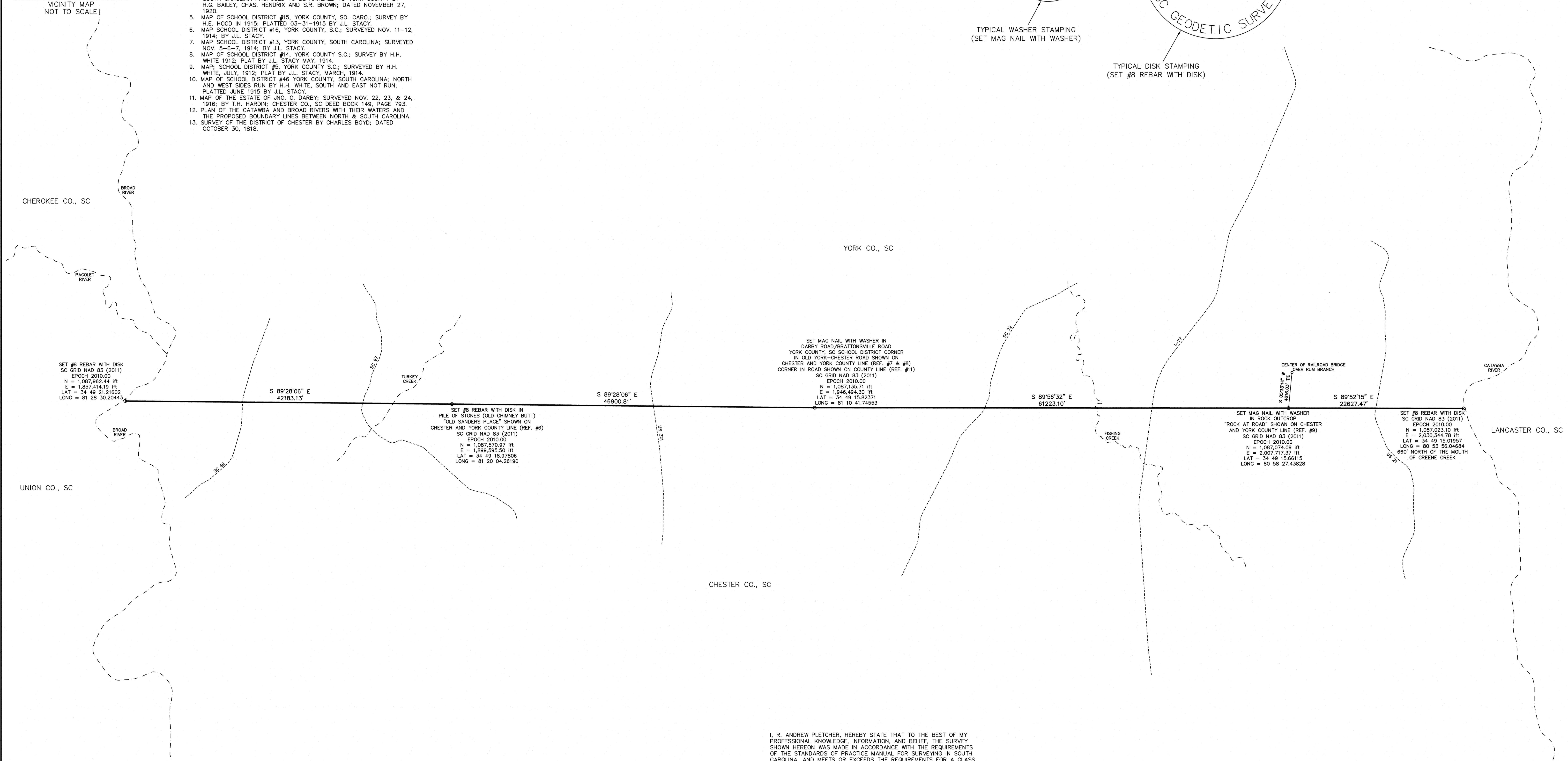
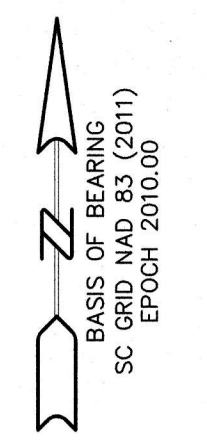
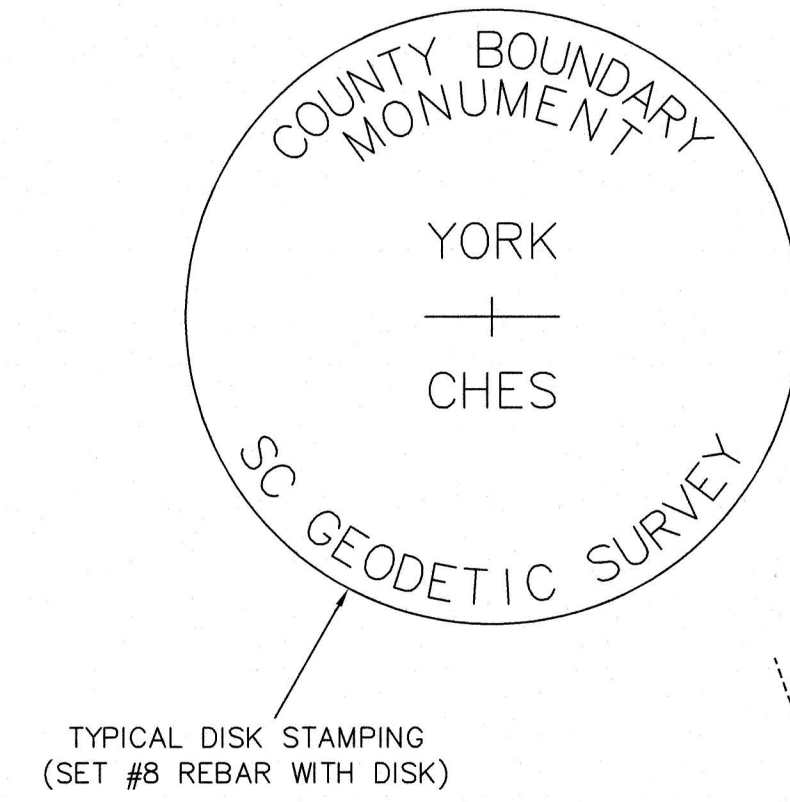
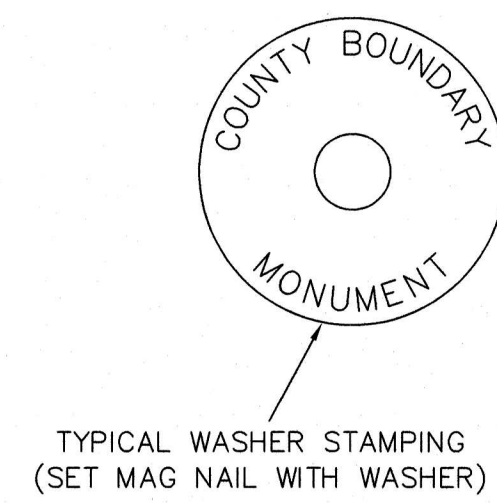


REFERENCES:

1. CODE OF LAWS OF SOUTH CAROLINA 1976; VOLUME 1A; CHAPTER 3 BOUNDARIES OF EXISTING COUNTIES; SEC. 4-3-120 CHESTER COUNTY AND SEC. 4-3-530 YORK COUNTY.
2. COMMUNICATION PURSUANT TO A RESOLUTION OF THE LEGISLATION OF THE STATE OF SOUTH CAROLINA TO RUN AND MARK THE DIVIDING LINE BETWEEN YORK AND CHESTER COUNTIES DATED NOVEMBER 14, 1797; COMMISSIONERS J.O. BROWN AND ALEXANDER MOORE.
3. THE 1868 TOWNSHIP LAW AND YORK COUNTY, SOUTH CAROLINA BY ROBERT JERALD L. WEST; BROAD RIVER BASIN HISTORICAL SOCIETY; DATED 1996.
4. PLAT SHOWING THE AREA OF THAT PORTION OF CHESTER COUNTY, SOUTH CAROLINA PROPOSED TO BE ANNEXED TO YORK COUNTY BY H.G. BAILEY, CHAS. HENDRIX AND S.R. BROWN; DATED NOVEMBER 27, 1920.
5. MAP OF SCHOOL DISTRICT #15, YORK COUNTY, SO. CARO.; SURVEY BY H.E. HOOD IN 1915; PLATTED 03-31-1915 BY J.L. STACY.
6. MAP SCHOOL DISTRICT #16, YORK COUNTY, S.C.; SURVEYED NOV. 11-12, 1914; BY J.L. STACY.
7. MAP SCHOOL DISTRICT #13, YORK COUNTY, SOUTH CAROLINA; SURVEYED NOV. 5-6-7, 1914; BY J.L. STACY.
8. MAP OF SCHOOL DISTRICT #14, YORK COUNTY S.C.; SURVEY BY H.H. WHITE 1912; PLAT BY J.L. STACY MAY, 1914.
9. MAP; SCHOOL DISTRICT #5, YORK COUNTY S.C.; SURVEYED BY H.H. WHITE, JULY, 1912; PLAT BY J.L. STACY, MARCH, 1914.
10. MAP OF SCHOOL DISTRICT #46 YORK COUNTY, SOUTH CAROLINA; NORTH AND WEST SIDES RUN BY H.H. WHITE, SOUTH AND EAST NOT RUN; PLATTED JUNE 1915 BY J.L. STACY.
11. MAP OF THE ESTATE OF JNO. O. DARBY; SURVEYED NOV. 22, 23, & 24, 1916; BY T.H. HARDIN; CHESTER CO., SC DEED BOOK 149, PAGE 793.
12. PLAN OF THE CATAWBA AND BROAD RIVERS WITH THEIR WATERS AND THE PROPOSED BOUNDARY LINES BETWEEN NORTH & SOUTH CAROLINA.
13. SURVEY OF THE DISTRICT OF CHESTER BY CHARLES BOYD; DATED OCTOBER 30, 1818.

NOTES:

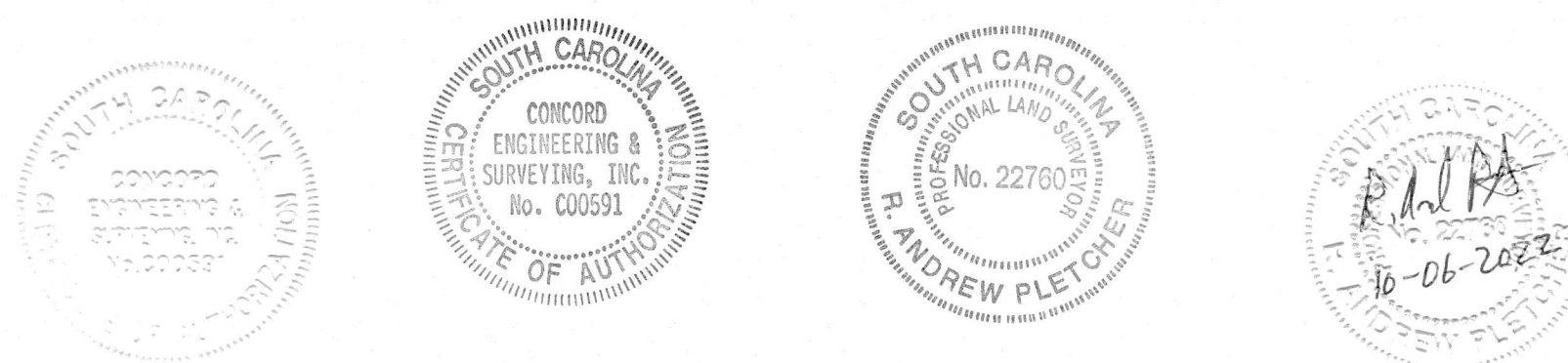
1. TRAVERSES ADJUSTED BY THE LEAST SQUARES ADJUSTMENT METHOD.
2. ALL DISTANCES ARE HORIZONTAL GRID DISTANCES.
3. SC GRID NAD 83 (2011) EPOCH 2010.00 BASIS OF BEARING DERIVED FROM SCGS NETWORK RTK (HORIZONTAL POSITIONAL ACCURACY = 0.07') USING GEOID MODEL GEOID12B. UNITS ARE INTERNATIONAL FEET.
4. THE FIELD SURVEY WAS COMPLETED ON 05-02-2018.



I, R. ANDREW PLETCHER, HEREBY STATE THAT TO THE BEST OF MY PROFESSIONAL KNOWLEDGE, INFORMATION, AND BELIEF, THE SURVEY SHOWN HEREON WAS MADE IN ACCORDANCE WITH THE REQUIREMENTS OF THE STANDARDS OF PRACTICE MANUAL FOR SURVEYING IN SOUTH CAROLINA, AND MEETS OR EXCEEDS THE REQUIREMENTS FOR A CLASS A SURVEY AS SPECIFIED THEREIN.

R. Andrew Pletcher
 PROFESSIONAL LAND SURVEYOR LICENSE NO. 22760

- LEGEND
- COUNTY LINE AS SURVEYED
 - - - - - TIE LINE
 - - - - - APPROXIMATE ROAD
 - - - - - APPROXIMATE RIVER



Re-Establishment of the Chester County and York County Boundary from the Broad River East to the Catawba River
 CHESTER COUNTY, S.C.
 YORK COUNTY, S.C.

SURVEY FOR:
 SOUTH CAROLINA GEODETIC SURVEY
 S GEOLOGY ROAD
 COLUMBIA, SC 29212

DATE: 10-06-2022
 SCALE: 1" = 6000'
 JOB NO.: 170246.000
 ACAD FILE: SCg12011.dwg
 SCALE IN FEET

COMPUTED BY: RAP
 DRAWN BY: RAP
 CHECKED BY: FAR

0 6000 12000 18000

CESI
 Civil - Geotechnical - Surveying
 45 SPRING STREET SW CONCORD (704) 786-5404
 CONCORD, NC 28025 FAX (704) 786-7454

© 2022 S.C. CERTIFICATE OF AUTHORIZATION NO. C00591