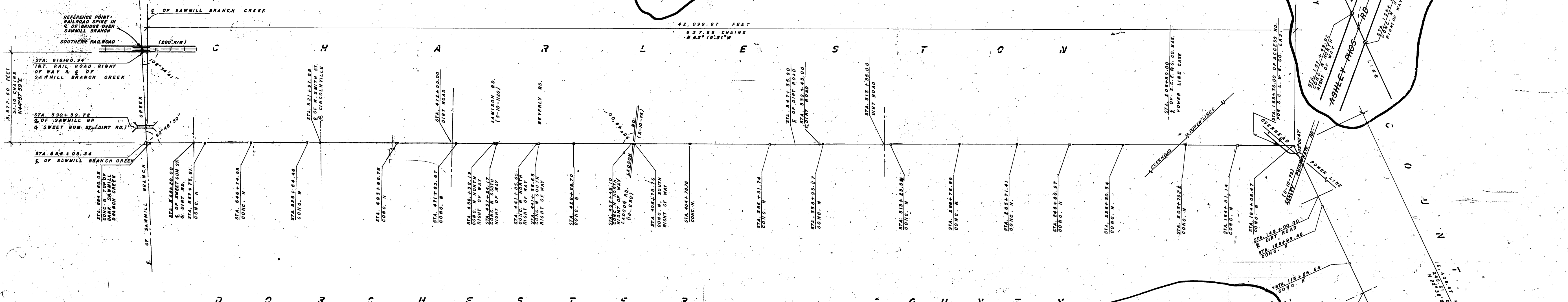
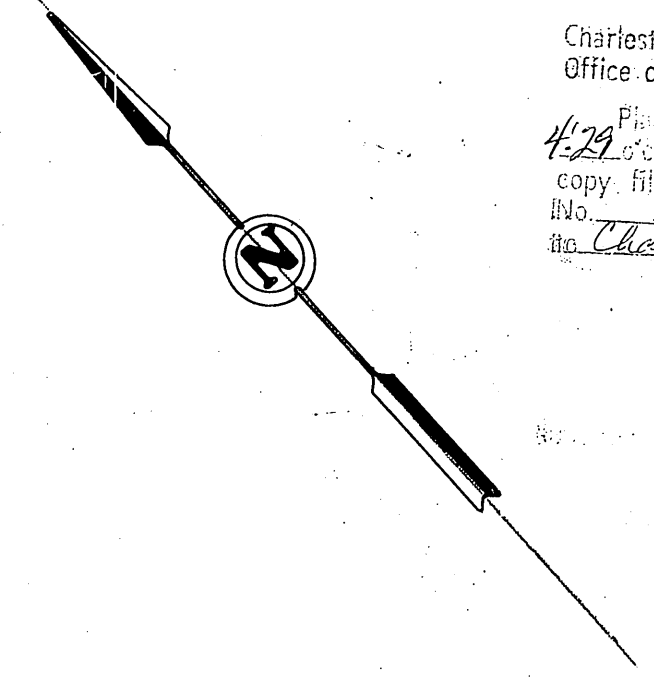
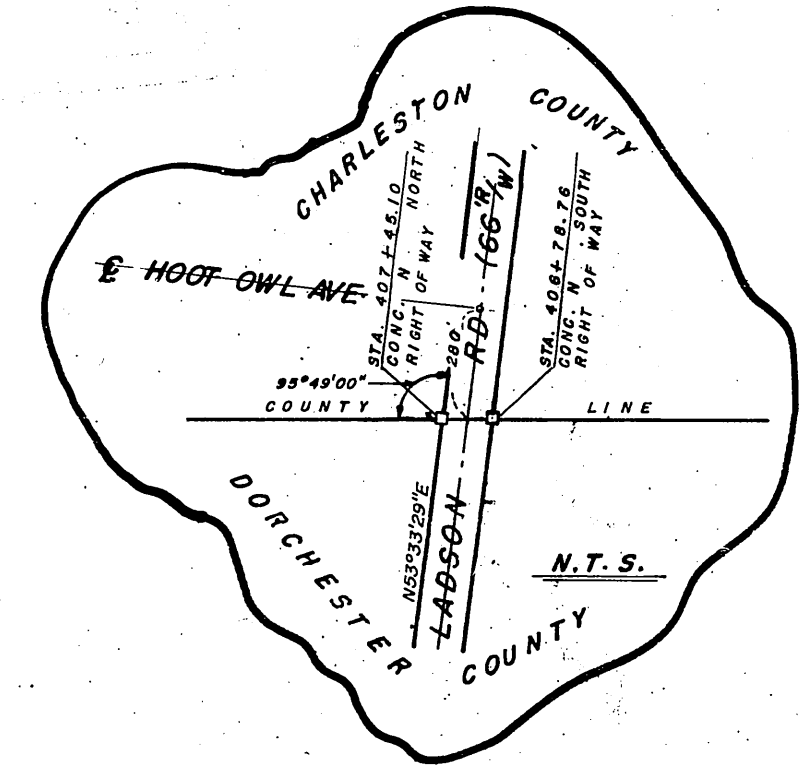


Charleston, South Carolina  
Office of Register Mesne Conveyance  
Plat recorded this 3 day of August 1982 at  
11:29 o'clock in Plat Book AV Page 168 and tracing cloth  
copy filed in File 1 Drawer Folder 94 Drawing  
No. 12 Original plat (white print) delivered  
to Charleston Planning Board

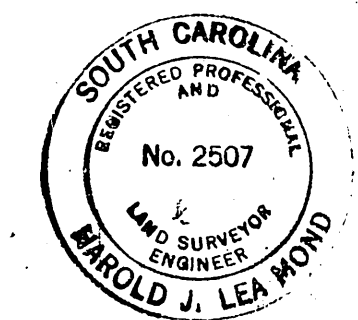
Robert N. King  
Register Mesne Conveyance



NOTE: THIS BOUNDARY LINE IS NOT AS SHOWN ON S.C. CODE OF LAWS, DOCKET 10-60 BUT DUE TO DISCREPANCY IN ORIGINAL DESCRIPTION REPRESENTS A COMPROMISE LINE APPROVED BY CHARLESTON / DORCHESTER COUNTIES.

NOTE:  
1 - COUNTY LINE ESTABLISHED BY USE OF S.C. CODE OF LAWS SECTION 14-60 AND S.C. HIGHWAY DEPT. DOCKET # 10-676 (CHARLESTON COUNTY) AND DOCKET # 18-383 (DORCHESTER COUNTY) SHEET # 19 OF 283 SHEETS  
2 - BEARINGS SHOWN WERE ESTABLISHED FROM TRUE NORTH / SOUTH BASE LINE LOCATED CHARLESTON AIR FORCE BASE.

APPROVED PLAT  
I B (2d) (County Line - ADJUSTED)  
Signed H. Frank (Ray Brown)  
DIRECTOR OF PLANNING  
CHARLESTON COUNTY PLANNING BOARD  
9559 AUG 3, 1982  
APPL. # DATE



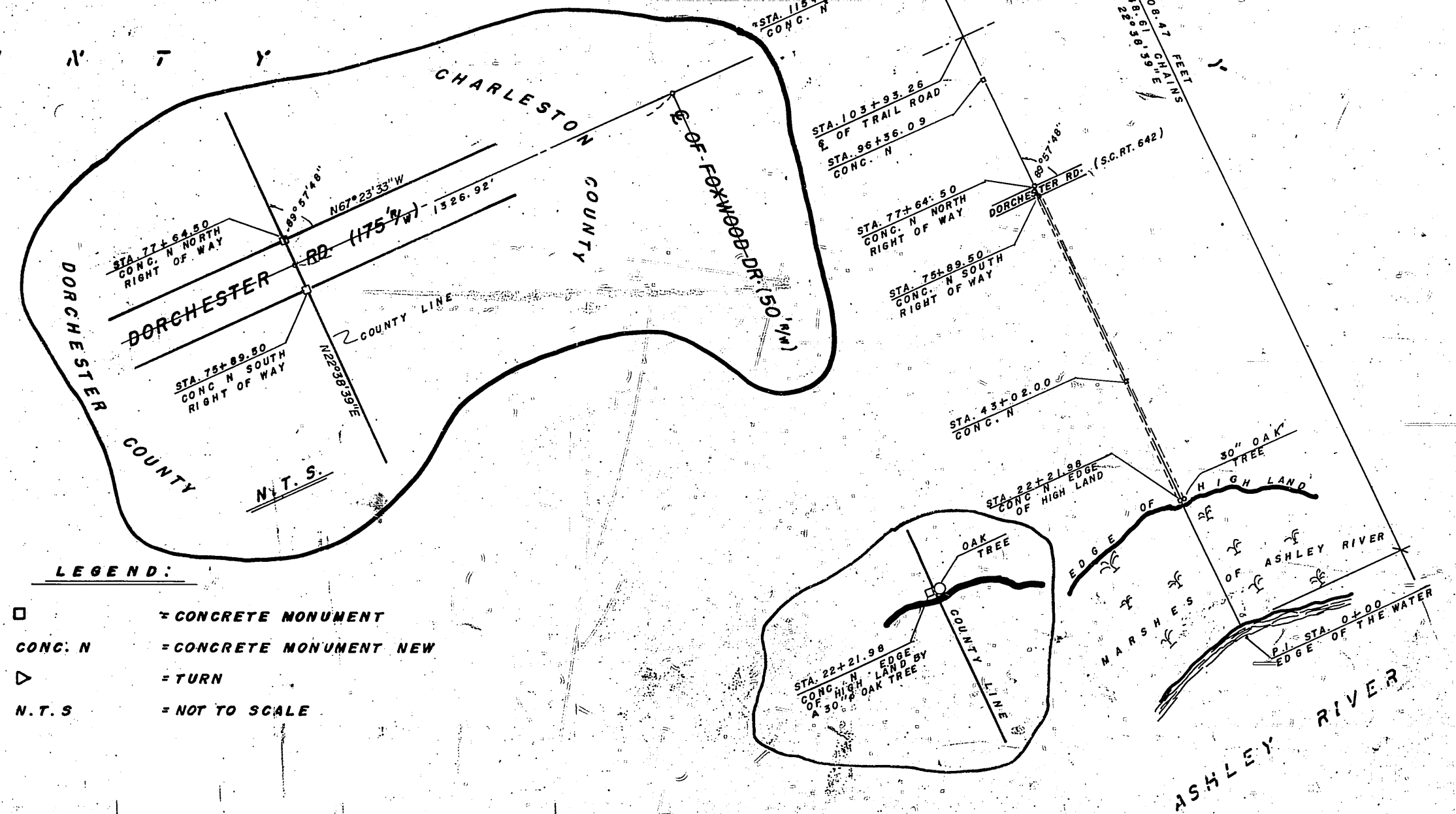
ENGINEERS/SURVEYORS CERTIFICATE:  
I, Harold Joseph Lea Mond, a Registered Professional Engineer and Land Surveyor in the State of South Carolina, hereby certify that I have surveyed the Property shown hereon, that this Plat shows its true dimensions, that all necessary markers have been installed and that the Precision of the Survey is 1/10,000.  
Harold J. Lea Mond  
Harold Joseph Lea Mond R.E., L.S.  
S.C. REG. NO. 2507

PLAT OF THE CHARLESTON - DORCHESTER COUNTIES COUNTY LINE SOUTH CAROLINA

DATE: JULY 10, 1978 SCALE: 1" = 2,000'



**SIGMA ENGINEERS, INC.**  
CONSULTING ENGINEERS & LAND SURVEYORS  
CHARLESTON, S.C.



LEGEND:  
□ = CONCRETE MONUMENT  
CONC. N = CONCRETE MONUMENT NEW  
▽ = TURN  
N.T.S. = NOT TO SCALE

SATISFACTORY TO CHARLESTON COUNTY  
Gordon B. Hines, DVS  
Chairman

SATISFACTORY TO DORCHESTER COUNTY  
Kenneth A. Wiggins  
Chairman