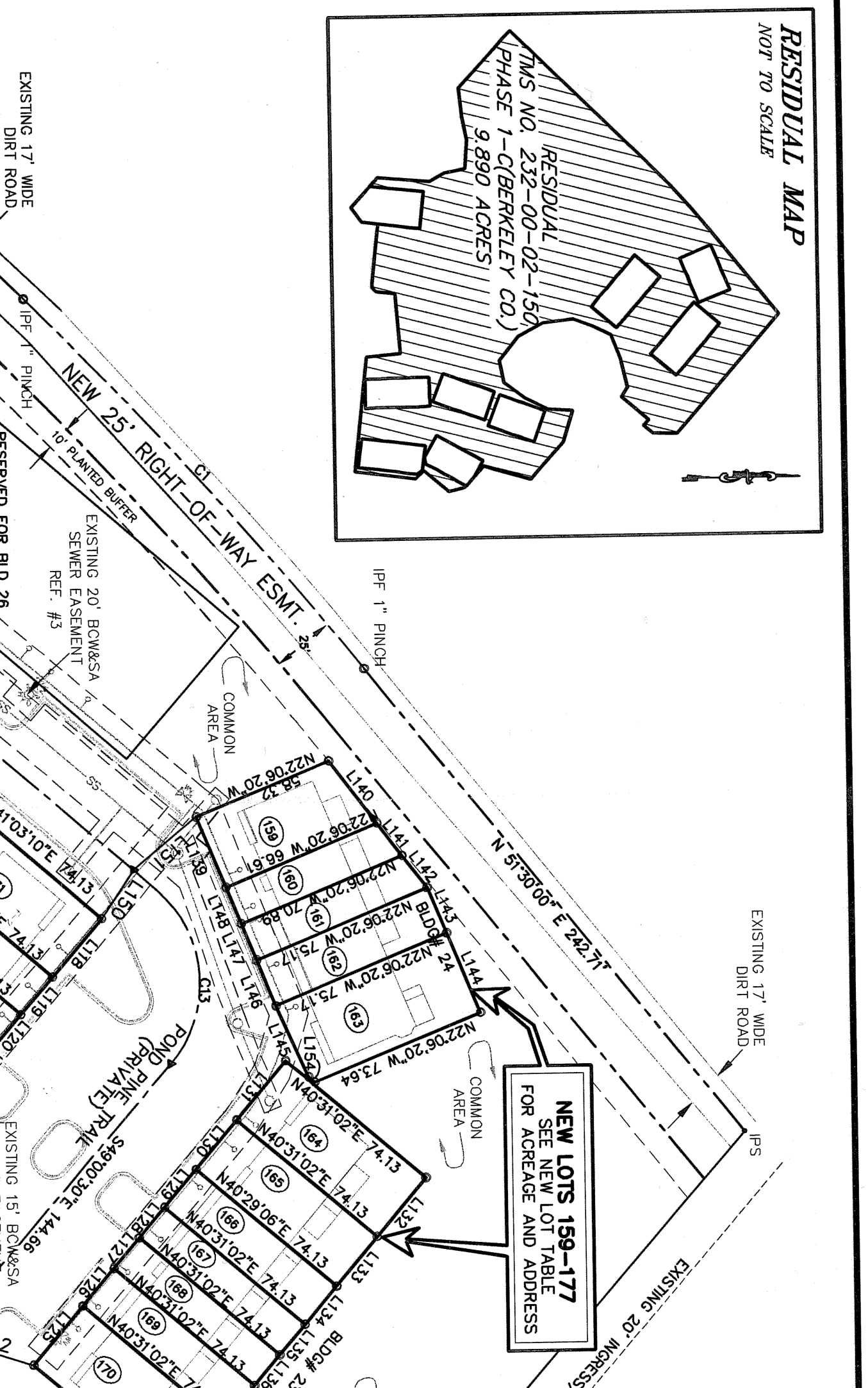
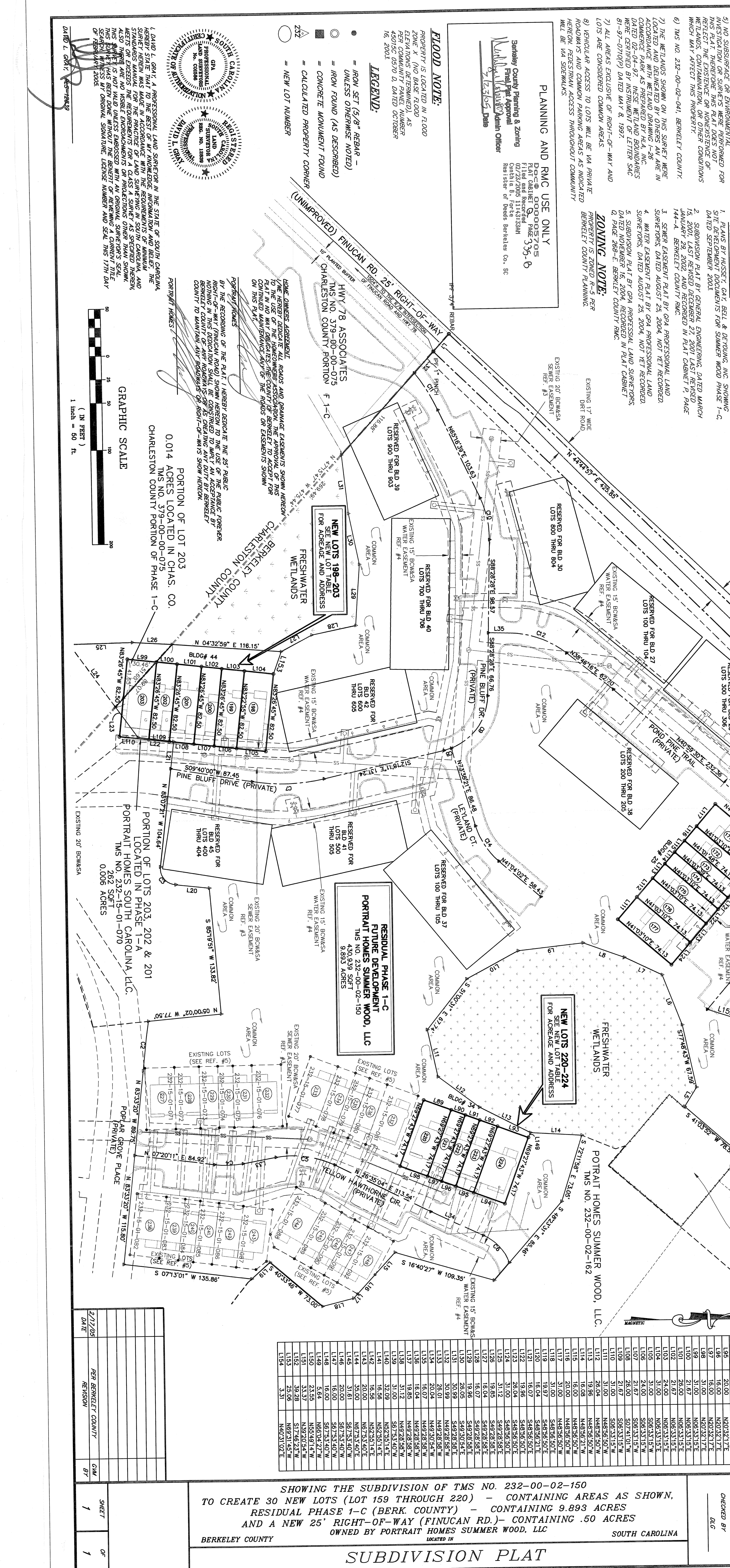


LOT NO.	BUILDING	SOFT	ACRES	ADDRESS
220	34	1,928. SPT	0.04 ACRES	590 YELLOW HAMTHORNE CIRCLE
221	34	1,186. SPT	0.027 ACRES	591 YELLOW HAMTHORNE CIRCLE
222	34	1,186. SPT	0.027 ACRES	592 YELLOW HAMTHORNE CIRCLE
223	34	1,482. SPT	0.034 ACRES	504 YELLOW HAMTHORNE CIRCLE
224	34	2,225. SPT	0.051 ACRES	504 YELLOW HAMTHORNE CIRCLE
198	44	2,145. SPT	0.049 ACRES	300 PINE BLUFF DRIVE
199	44	1,980. SPT	0.045 ACRES	301 PINE BLUFF DRIVE
200	44	1,787. SPT	0.041 ACRES	302 PINE BLUFF DRIVE
201	44	2,145. SPT	0.049 ACRES	303 PINE BLUFF DRIVE
202	44	1,787. SPT	0.041 ACRES	304 PINE BLUFF DRIVE
203	44	2,257. SPT	0.058 ACRES	305 PINE BLUFF DRIVE
171	23	1,481. SPT	0.034 ACRES	601 POND PINE TRAIL
172	23	1,481. SPT	0.034 ACRES	602 POND PINE TRAIL
173	23	1,807. SPT	0.027 ACRES	603 POND PINE TRAIL
174	23	1,807. SPT	0.027 ACRES	604 POND PINE TRAIL
175	23	1,471. SPT	0.033 ACRES	605 POND PINE TRAIL
176	23	1,930. SPT	0.044 ACRES	606 POND PINE TRAIL
177	23	1,927. SPT	0.044 ACRES	606 POND PINE TRAIL
164	23	1,928. SPT	0.044 ACRES	500 POND PINE TRAIL
165	23	1,928. SPT	0.044 ACRES	501 POND PINE TRAIL
166	23	1,482. SPT	0.034 ACRES	502 POND PINE TRAIL
167	23	1,191. SPT	0.027 ACRES	504 POND PINE TRAIL
168	23	1,189. SPT	0.027 ACRES	504 POND PINE TRAIL
169	23	1,471. SPT	0.033 ACRES	505 POND PINE TRAIL
170	23	1,936. SPT	0.044 ACRES	506 POND PINE TRAIL
159	33	1,936. SPT	0.025 ACRES	403 POND PINE TRAIL
160	33	1,089. SPT	0.028 ACRES	402 POND PINE TRAIL
161	33	1,303. SPT	0.034 ACRES	401 POND PINE TRAIL
162	33	1,303. SPT	0.034 ACRES	401 POND PINE TRAIL
163	33	2,256. SPT	0.058 ACRES	400 POND PINE TRAIL



CURVE	RADIUS	LENGTH	TANGENT	CHORD	BEARING	DELTA
C1	137.11	52.98	28.44	52.84	S47°17'43"E	6.44±8'
C2	173.17	27.88	18.18	24.88	S69°07'30"E	3.41±0'
C3	173.06	30.38	15.31	20.28	N50°21'51"E	3.93±3.5'
C4	100.00	63.89	33.98	62.90	N01°27'41"W	17.24±8.9'
C5	104.34	63.89	33.98	62.90	S08°19'13"W	33.05±11'
C6	52.00	40.99	21.62	39.92	S47°09'18"W	48.09±9'
C7	200.00	78.89	38.92	78.22	N01°19'08"W	21.48±4'
C8	80.00	9.13	4.58	8.12	N87°41'23"E	21.48±4'
C9	100.00	45.81	23.31	45.41	S78°24'06"W	68.24±2.9'
C10	200.00	46.59	23.30	46.48	S59°38'15"W	28.14±5.3'
C11	100.00	60.00	33.70	60.00	S78°24'06"W	13.70±4.4'
C12	200.00	46.59	23.30	46.48	S59°38'15"W	3.74±4.4'
C13	50.00	77.91	48.37	76.28	S92°11'07"W	89.18±6.0'
C14	80.00	45.48	23.37	44.87	N57°21'11"E	32.34±19'

LINE	LENGTH	BEARING
L1	25.00	S47°17'43"E
L2	51.17	N02°07'47"E
L3	27.17	N41°04'08"E
L4	16.39	N45°58'02"E
L5	42.92	S82°02'18"E
L6	44.10	N25°33'55"E
L7	44.10	N25°33'55"E
L8	46.35	N20°11'25"E
L9	69.84	N02°04'25"W
L10	62.08	N27°41'56"W
L11	51.06	S77°58'35"W
L12	34.58	S71°19'27"W
L13	50.95	S21°02'25"W
L14	31.84	S45°58'56"E
L15	31.84	S45°58'56"E
L16	27.89	S45°58'56"E
L17	6.30	S45°58'56"E
L18	34.03	N13°42'21"E
L19	26.13	N15°30'33"W
L20	35.67	N08°24'44"E
L21	35.03	S85°53'21"E
L22	38.78	N54°41'23"E
L23	38.78	N54°41'23"E
L24	82.31	N44°17'23"E
L25	65.19	S00°34'15"E
L26	41.93	S03°48'53"W
L27	36.72	S27°58'45"E
L28	47.77	S11°33'44"E
L29	47.77	S11°33'44"E
L30	62.56	S85°53'21"E
L31	62.56	N44°15'08"E
L32	30.59	S47°15'47"E
L33	30.59	S47°15'47"E
L34	35.40	S01°04'39"E
L35	61.30	S05°20'33"E
L36	22.98	N01°31'32"W
L37	31.00	N02°51'17"E
L38	31.00	N02°51'17"E
L39	16.00	N02°51'17"E
L40	21.67	S02°41'01"W
L41	21.67	S02°41'01"W
L42	31.00	S08°33'15"E
L43	31.00	S08°33'15"E
L44	20.00	N02°32'17"E
L45	35.00	N20°32'17"E
L46	20.00	N02°32'17"E
L47	16.00	N20°32'17"E
L48	16.00	N20°32'17"E
L49	21.67	S02°41'01"W
L50	21.67	S02°41'01"W
L51	31.00	S08°33'15"E
L52	31.00	S08°33'15"E
L53	16.00	N48°56'50"W
L54	16.00	N48°56'50"W
L55	20.00	N48°56'50"W
L56	20.00	N48°56'50"W
L57	31.00	N48°56'50"E
L58	31.00	N48°56'50"E
L59	18.04	S48°28'58"E
L60	18.04	S48°28'58"E
L61	18.04	S48°28'58"E
L62	18.04	S48°28'58"E
L63	18.04	S48°28'58"E
L64	16.07	S48°28'58"E
L65	16.07	S48°28'58"E
L66	16.07	S48°28'58"E
L67	16.07	S48°28'58"E
L68	16.07	S48°28'58"E
L69	16.07	S48°28'58"E
L70	16.07	S48°28'58"E
L71	16.07	S48°28'58"E
L72	16.07	S48°28'58"E
L73	16.07	S48°28'58"E
L74	16.07	S48°28'58"E
L75	16.07	S48°28'58"E
L76	16.07	S48°28'58"E
L77	16.07	S48°28'58"E
L78	16.07	S48°28'58"E
L79	16.07	S48°28'58"E
L80	16.07	S48°28'58"E
L81	16.07	S48°28'58"E
L82	16.07	S48°28'58"E
L83	16.07	S48°28'58"E
L84	16.07	S48°28'58"E
L85	16.07	S48°28'58"E
L86	16.07	S48°28'58"E
L87	16.07	S48°28'58"E
L88	16.07	S48°28'58"E
L89	16.07	S48°28'58"E
L90	16.07	S48°28'58"E
L91	16.07	S48°28'58"E
L92	16.07	S48°28'58"E
L93	16.07	S48°28'58"E
L94	16.07	S48°28'58"E
L95	16.07	S48°28'58"E
L96	16.07	S48°28'58"E
L97	16.07	S48°28'58"E
L98	16.07	S48°28'58"E
L99	16.07	S48°28'58"E
L100	16.07	S48°28'58"E



**PLANNING AND RMC USE ONLY**

David L. Galt, Director  
 Berkeley County Planning & Zoning  
 1100 Bay Street, Suite 200  
 Charleston, SC 29401  
 Phone: 843-554-3311  
 Fax: 843-554-3312

**FLOOD NOTE:**

PROPERTY IS LOCATED IN FLOOD ZONE X (NO BASE FLOOD ELEVATIONS DETERMINED) AS PER COMMISSION ORDER DATED OCTOBER 16, 2003.

**LEGEND:**

- IRON SET (3/8" REBAR - UNLESS OTHERWISE NOTED)
- IRON FOUND (AS DESCRIBED)
- CALCULATED MONUMENT FOUND
- ▲ CALCULATED PROPERTY CORNER
- NEW LOT NUMBER

**REFERENCES:**

- PLANS BY HUSSEY, GALT, BELL & DETONING, INC. SHOWING SITE DEVELOPMENT DOCUMENTS FOR SUMMER WOOD PHASE 1-C, DATED SEPTEMBER 2003.
- SUBDIVISION PLAT BY GENERAL ENGINEERING, DATED MARCH 15, 2001, LAST REVISED DECEMBER 27, 2001 LAST REVISED JANUARY 29, 2002 AND RECORDED IN PLAT CABINET P, PAGE 144-4, BERKELEY COUNTY RMC.
- SEWER EASEMENT PLAT BY GFA PROFESSIONAL LAND SURVEYORS, DATED AUGUST 23, 2004, NOT YET RECORDED.
- WATER EASEMENT PLAT BY GFA PROFESSIONAL LAND SURVEYORS, DATED AUGUST 23, 2004, NOT YET RECORDED.
- SUBDIVISION PLAT BY GFA PROFESSIONAL LAND SURVEYORS, DATED NOVEMBER 16, 2004, RECORDED IN PLAT CABINET Q, PAGE 289-E, BERKELEY COUNTY RMC.

**ZONING NOTE:**

PROPOSED LOTS ARE ZONED R-100 PER BERKELEY COUNTY PLANNING DEPARTMENT.

**RESIDUAL PHASE 1-C FUTURE DEVELOPMENT**  
 TMS NO. 232-00-02-150  
 9.893 ACRES

**RESIDUAL PHASE 1-A**  
 TMS NO. 232-00-02-156  
 9.890 ACRES

**GRAPHIC SCALE**

1" = 60' (IN FEET)

PORTION OF LOT 203, 202 & 201 LOCATED IN PHASE 1-C, CHARLESTON COUNTY PORTION OF PHASE 1-C, 0.014 ACRES LOCATED IN CHAS. CO. TMS NO. 379-00-00-075

PORTION OF LOTS 159-177 LOCATED IN PHASE 1-A, CHARLESTON COUNTY PORTION OF PHASE 1-A, 0.006 ACRES

**RESIDUAL PHASE 1-C FUTURE DEVELOPMENT**  
 TMS NO. 232-00-02-150  
 9.893 ACRES

**RESIDUAL PHASE 1-A**  
 TMS NO. 232-00-02-156  
 9.890 ACRES

**RESIDUAL PHASE 1-C FUTURE DEVELOPMENT**  
 TMS NO. 232-00-02-150  
 9.893 ACRES

**RESIDUAL PHASE 1-A**  
 TMS NO. 232-00-02-156  
 9.890 ACRES

**PROFESSIONAL LAND SURVEYORS**  
**GPA**  
 (CHARLESTON COUNTY)  
 481-4553 LAUREL LANE  
 CHARLESTON, SC 29405  
 TEL (843) 513-8830  
 FAX (843) 513-8882

SHOWING THE SUBDIVISION OF TMS NO. 232-00-02-150 TO CREATE 30 NEW LOTS (LOT 159 THROUGH 220) - CONTAINING AREAS AS SHOWN, RESIDUAL PHASE 1-C (BERK COUNTY) - CONTAINING 9.893 ACRES AND A NEW 25' RIGHT-OF-WAY (FINUCAN RD.) CONTAINING .50 ACRES OWNED BY PORTRAIT HOMES SUMMER WOOD, LLC

**SUBDIVISION PLAT**

BERKELEY COUNTY SOUTH CAROLINA

**GPA**  
 PROFESSIONAL LAND SURVEYORS  
 (CHARLESTON COUNTY)  
 481-4553 LAUREL LANE  
 CHARLESTON, SC 29405  
 TEL (843) 513-8830  
 FAX (843) 513-8882

**GPA**  
 PROFESSIONAL LAND SURVEYORS  
 (CHARLESTON COUNTY)  
 481-4553 LAUREL LANE  
 CHARLESTON, SC 29405  
 TEL (843) 513-8830  
 FAX (843) 513-8882