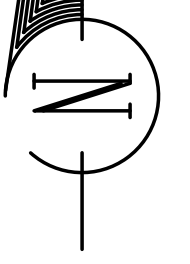


~ BERKELEY COUNTY ~

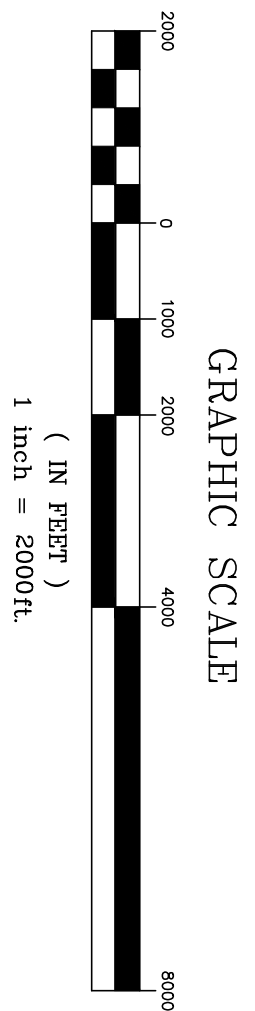
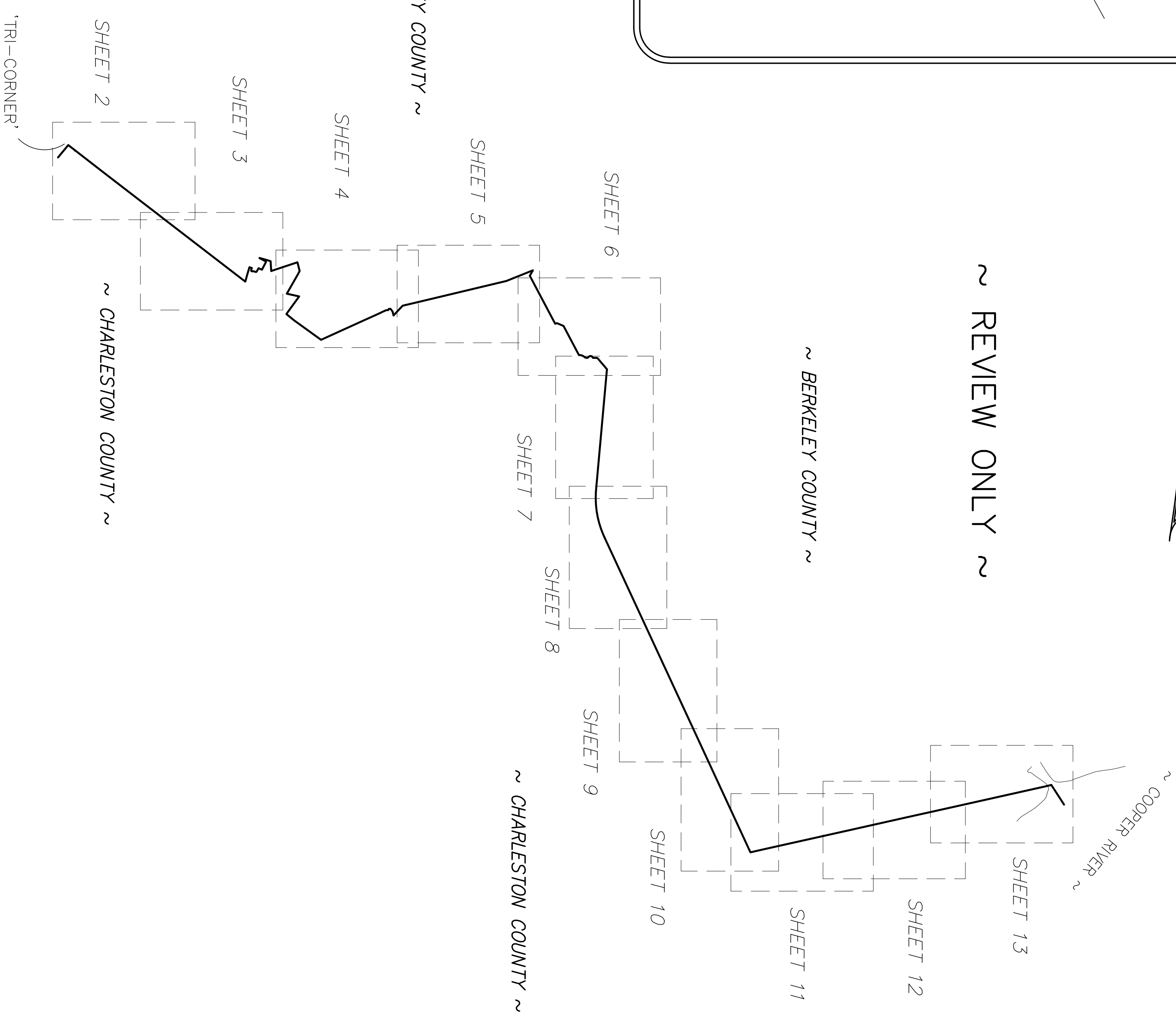
~ CHARLESTON COUNTY ~

GRID NORTH
NAD83 (2011 Adjustment/SC Zone 3900)



~ REVIEW ONLY ~

~ DORCHESTER COUNTY ~



NOTES

- THIS IS NOT A VALID, TRUE COPY OF THIS DOCUMENT UNLESS IT BEARS THE ORIGINAL SIGNATURE, SIGNATURE DATE, AND THE RAISED, EMBOSSED SEAL OF THE REGISTERED PROFESSIONAL LAND SURVEYOR NOTED HEREON.
- THE PURPOSE OF THIS PLAT IS TO MAP THE SECTION OF THE CHARLESTON-BERKELEY COUNTY LINE STARTING AT THE COMMON "TRI" CORNER OF BERKELEY, CHARLESTON, AND DORCHESTER COUNTIES, SOUTH CAROLINA, AND TO BE A BOUNDARY SURVEY OR BOUNDARY PLAT OF THE PROPERTY PARCELS ADJACENT TO OR NEAR THE AFOREMENTIONED COUNTY LINE. THE CHARLESTON-BERKELEY COUNTY LINE AND BOUNDARY LINES OF ADJACENT PARCELS ARE SHOWN BY THE BOUNDARY LINES OF THE SOUTH CAROLINA LEGISLATIVE ACTS THAT ESTABLISH AND DESCRIBE OR DEFINE THE SURVEY OR PLAT OF THIS PORTION OF THE CHARLESTON-BERKELEY COUNTY LINE. BEING PARCEL OR PARCELS OF THE ADJACENT PARCELS AS REFERENCED HEREON.
- THE PARCEL INFORMATION REFERENCED ON THIS PLAT IS ONLY THAT USED TO SHOW THE PUBLIC RECORD OWNERSHIP OF THE PROPERTIES ADJOINING OR NEAR THE CHARLESTON-BERKELEY COUNTY LINE BEING FOUND ON RECORD, AND NOT A GUARANTEE OF THE ACCURACY OF THE RECORDS OF DEEDS, RECORDS, AND DOES NOT CONSTITUTE A TITLE SEARCH, TITLE ABSTRACT, OR TITLE OPINION FOR ANY OF THE PROPERTIES NOTED HEREON.
- THIS PLAT HAS BEEN DONE FOR THE STATE OF SOUTH CAROLINA IN ACCORDANCE WITH THEIR PLANNED USE AND PURPOSE OF THE INFORMATION SHOWN HEREON. ALL OTHER PARTIES ARE SUBSEQUENTLY PUT ON NOTICE AS TO THE LIMITED DEGREE OF RELIANCE UPON THIS PLAT BY THIRD PARTIES.
- THIS PROPERTY MAY BE SUBJECT TO VARIOUS UTILITY EASEMENTS (I.E. POWER, TELEPHONE, SANITARY and/or STORM SEWER) THAT WERE NOT NOTED EITHER IN THE REFERENCE DEED OR REFERENCE PLATS ASSOCIATED WITH THIS PROPERTY OR BY THE CLIENTS TITLE COMMITMENT. THE UTILITIES SHOWN HEREON ARE BASED ON THE RECORDS OF THE STATE OF SOUTH CAROLINA AND ARE NOT DEPT. MATERIAL and/or CONDITION. THIS PLAT DOES NOT ADDRESS ANY SUB-TERRANEAN CONDITIONS OF ANY NATURE, UNLESS SPECIFICALLY NOTED OTHERWISE ON THIS PLAT.
- NO SURVEYS, EVALUATION OR DELINEATION OF ANY ENVIRONMENTAL ISSUES OR MATTERS SUCH AS HAZARDOUS WASTE CONTAMINATION, SUBSURFACE CHARACTERISTICS (I.E. FILL DIRT, etc.), WETLANDS, OR ENDANGERED SPECIES, etc. HAVE BEEN DONE FOR THE SUBJECT PROPERTIES, AND THIS SURVEY DOES NOT CERTIFY AS TO THE PRESENCE OR ABSENCE OF SUCH CONDITIONS.
- FOR ADDITIONAL NOTES SPECIFIC TO THIS SURVEY AND THE INFORMATION FOR THIS PLAT AND THE COUNTY BOUNDARY LINE SHOWN HEREON, SEE SHEETS 2 thru 13 of 13.
- ALL "NORTHING" (N_n) and "EASTING" (E_n) COORDINATES SHOWN ON THIS PLAT ARE EXPRESSLY GIVEN AS SOUTH CAROLINA STATE PLANE COORDINATES (SCSPO), ZONE 3900, NAD 83, 2011 ADJUSTMENT (P.L. SHEET 2 OF 13 OF THIS PLAT PROVIDES A COORDINATE LINE SUMMARY TABLE OF THE SOUTH CAROLINA STATE PLANE COORDINATE DATA ALONG THE MAPPED SECTION OF THE ENJOINING BOUNDARY LINE.
- THE ORIENTATION OF THIS PLAT IS SCSPO GRID NORTH, NAD 83, 2011 ADJUSTMENT, TOWARD THE SCSPO COMBINED STATE FACTOR FOR THIS PLAT IS 0.0002282614. A MAG NAIL, w/WASHER BEING FOUND ON PATRIOT BLVD. NEAR THE COUNTY LINE (SCSPC N: 410.379.16 E: 2271.886.84).

LEGEND

	EXISTING COUNTY LINE
	ADJOINING COUNTY LINE RUNNING ALONG THE CURRENT R/W
	ADJOINING BOUNDARY LINE (BY TITLE &/or MONUMENTATION)
	SHEET BORDER (R.O.W. OR ROW)
	SHEET BORDER
	MATCH LINE BETWEEN PLAT SHEETS
	IRON PIN OR PIPE FOUND (I.P.F. OR I.P.P. SIZE & TYPE NOTED)
	STAKE FOUND (I.P.S. OR I.P.S. DIMENSIONS OF TOP PORTION/AREA OF STAKE NOTED)
	CONCRETE MONUMENT FOUND (C.M.F. OR C.M.F. SIZE/DIMENSIONS NOTED)
	COMPUTED POINT; NO MONUMENT FOUND &/or SET
	COUNTY LINE CORNER IDENTIFIER
	IRON PIN SET (I.P.S.) - #8 RB, w/3-1/4" S.C.G.S.
	ALUMINUM CAP SET (I.P.S.) (UNLESS NOTED OTHERWISE)
	MAG NAIL & WASHER SET - "COUNTY BOUNDARY MONUMENT"
	IRON REINFORCING BAR (REBAR)
	OPEN TOP IRON PIPE or PIN
	CRIMP TOP IRON PIPE or PIN
	PINCH TOP IRON PIPE or PIN
	ABOVE GROUND LEVEL
	REGISTER of MESNE CONVEYANCE
	R.M.C.
	R.O.D.
	BK./PG.
	D.B./PG.
	P.B./PG.
	P.C./SL.
	T.M.S.
	C/L
	P.I.
	C.P.
	S.C.G.S.
	ANEXX
	SCDDT
	DKT.
	Pg.
	ML
	NAD 83
	N./E.
	SCSPO

A PLAT OF A PORTION OF THE
CHARLESTON-BERKELEY COUNTY LINE
STARTING AT THE "FINUCAN MONUMENT" AT THE COMMON "TRI" CORNER OF BERKELEY, CHARLESTON, AND DORCHESTER COUNTIES, EAST, SOUTHEAST OF THE TOWN OF SUMMERVILLE, S.C. LOCATED 1500'± NORTH OF THE INTERSECTION OF E. 5TH N STREET (U.S. HWY. 78) AND FINUCAN ROAD (LOCAL ROAD), THEN SOUTHEASTERLY ALONG THE ORIGINAL CENTERLINE OF ANCRUM ROAD (S-8-1228), THEN RUNNING NORTHEASTERLY THROUGH A SERIES OF CORNERS UNTIL REACHING THE WESTERN R/W OF THE 'SOUTHERN RAIL ROAD', THEN IN A SOUTHERN DIRECTION TO THE INTERSECTION WITH REMOUNT ROAD (S-10-13) THEN EASTERLY DIRECTION TO A POINT AT THE MOUTH OF 'GOOSE CREEK' AND THE 'COOPER RIVER' EAST OF THE CITY OF NORTH CHARLESTON, S.C.

CORNERSTONE
SURVEYING & ENGINEERING, INC.
1240 Bacons Bridge Rd. • Summerville • South Carolina • 29485 • Phone: 843-871-9706

This is not a valid, true copy of this document unless bearing an original signature and a raised, embossed seal of the surveyor or engineer.
© Copyright 2020, CORNERSTONE SURVEYING & ENGINEERING, INC. All rights reserved. Reproduction or use of this document, in whole or part without written permission is prohibited.
Print No. _____
Date: ____/____/____

STATE OF SOUTH CAROLINA
CORNERSTONE SURVEYING & ENGINEERING, INC.
CERTIFICATE OF AUTHORIZATION
C.O.A.

STATE OF SOUTH CAROLINA
CORNERSTONE SURVEYING & ENGINEERING, INC.
DAVID BERKELEY
REGISTERED PROFESSIONAL LAND SURVEYOR
No. 10553
EXPIRES 12/31/2024
EMBOSSSED SEAL

NOT VALID UNLESS SIGNED IN RED INK

DATE OF MAP: 9/23/2020
DRAWN: AMK
DESIGN: RDB/AMK
CHECKED: KAW/RDB
APPROVED: RDB
CAD FILE: 1702-001 CHS-BERK.dwg
F.B. & P.G. _____
P.L. BOARD APPL# _____
DATE _____

PROJ. NO.: 17022-001
SHEET 1 OF 13

NOTE:
FOR 'ADDITIONAL NOTES' SEE SHEET 1.



COUNTY LINE MONUMENT SUMMARY TABLE – NAD 83 (2011 Adjustment)

Monument	Northing (ft.)	Easting (ft.)	Description
'BU'	433,483.85	2,260,782.89	COUNTY MONUMENT SET
'BV'	431,833.43	2,262,913.97	COUNTY MONUMENT SET
'BV-1'	430,199.99	2,265,032.70	COUNTY MONUMENT SET
'BV-2'	428,889.84	2,266,732.07	1.5" O.T.
'BW'	424,984.24	2,271,798.04	BOLT
'BW-1'	424,999.73	2,271,802.45	#5 REBAR
'BX'	425,081.02	2,271,825.21	#5 REBAR
'BY'	425,334.59	2,271,898.09	1.5" O.T.
'BZ'	425,599.92	2,271,974.67	1" O.T.
'CA'	425,729.67	2,272,011.53	1" O.T.
'CB'	425,880.00	2,272,056.51	1.5" P.T.
'CC'	425,835.28	2,272,203.82	#5 REBAR
'CD'	425,673.21	2,272,158.88	4" O.T.
'CE'	425,637.36	2,272,191.78	1" O.T.
'CF'	425,625.95	2,272,231.42	#5 REBAR
'CG'	425,630.25	2,272,313.39	#5 REBAR
'CH'	425,585.70	2,272,444.18	1" O.T.
'CJ'	425,598.06	2,272,500.56	1" P.T.
'CK'	425,820.73	2,272,631.17	1.5" P.T.
'CL'	425,723.13	2,272,833.42	1" P.T.
'CM'	426,199.39	2,273,082.99	#5 REBAR
'CN'	426,238.37	2,273,080.49	COUNTY MONUMENT SET
'CO'	426,452.29	2,272,678.83	1" P.T.
'CP'	426,454.47	2,272,682.60	1" P.T.
'CQ'	426,354.39	2,273,044.59	COUNTY MONUMENT SET
'CR'	426,256.46	2,273,378.18	#5 REBAR
'CS'	425,645.15	2,273,415.73	#5 REBAR
'CT'	425,686.36	2,273,539.77	CMF 4"x4"
'CU'	426,185.68	2,275,043.04	0.75" AXLE
'CV'	425,645.40	2,275,186.89	I-BEAM
'CW'	425,459.32	2,275,081.17	COUNTY MONUMENT SET
'CX'	424,229.84	2,274,382.60	1" O.T.
'CY'	424,064.09	2,275,154.21	#5 REBAR
'CZ'	422,992.18	2,274,379.69	#5 REBAR
'CZ-1'	422,966.22	2,274,360.93	MAG & COUNTY WASHER
'DA'	422,561.72	2,274,852.85	COUNTY MONUMENT SET
'DB'	421,363.94	2,276,513.79	MAG & COUNTY WASHER

COUNTY LINE MONUMENT SUMMARY TABLE – NAD 83 (2011 Adjustment) 'cont'd.

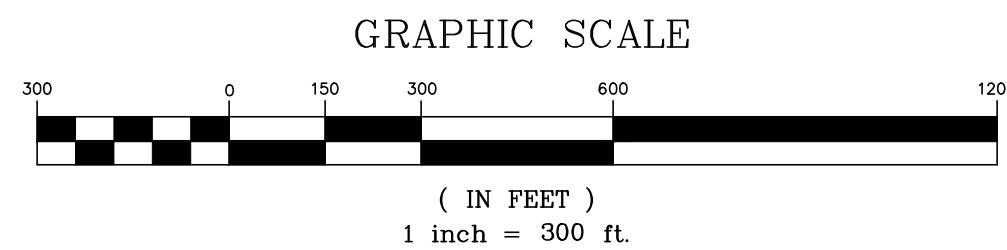
Monument	Northing (ft.)	Easting (ft.)	Description
'DB-1'	422,525.91	2,279,071.70	#5 REBAR
'DC'	422,974.53	2,280,080.21	1.25" P.T.
'DD'	423,096.25	2,280,318.66	COUNTY MONUMENT SET
'DD-1'	423,199.06	2,280,556.40	COUNTY MONUMENT SET
'DD-2'	423,219.42	2,280,704.92	COUNTY MONUMENT SET
'DD-3'	423,268.95	2,280,718.80	COUNTY MONUMENT SET
'DD-4'	423,297.19	2,280,784.43	COUNTY MONUMENT SET
'DD-5'	423,283.31	2,280,843.02	COUNTY MONUMENT SET
'DD-6'	423,179.80	2,280,927.14	1" O.T.
'DD-7'	423,110.67	2,280,973.54	COUNTY MONUMENT SET
'DE'	422,879.71	2,281,026.07	1" O.T.
'DF'	423,488.39	2,281,594.78	2" O.T.
'DG'	423,699.28	2,282,513.10	2" P.T.
'DH'	425,026.77	2,288,050.57	CMF 4"x4"
'DJ'	425,690.81	2,289,702.14	1.5" O.T.
'DK'	425,347.99	2,289,507.60	2" O.T.
'DL'	422,363.93	2,291,086.07	2" O.T.
'DM'	422,402.84	2,291,196.76	#5 REBAR
'DN'	422,221.47	2,291,607.64	#5 REBAR
'DO'	421,765.94	2,291,848.40	#5 REBAR
'DP'	420,418.75	2,292,560.44	CALCULATED POINT
'DQ'	419,530.78	2,294,310.77	CALCULATED POINT
'DQ-1'	417,347.98	2,294,113.53	COUNTY MONUMENT SET
'DQ-2'	416,352.15	2,294,023.49	COUNTY MONUMENT SET
'DQ-3'	413,620.43	2,293,776.70	COUNTY MONUMENT SET
'DQ-4'	412,625.06	2,293,686.75	COUNTY MONUMENT SET
'DQ-4A'	412,037.59	2,293,633.67	CALCULATED POINT
'DQ-4B'	409,079.13	2,294,147.51	CALCULATED POINT
'DQ-5'	406,675.63	2,295,261.59	COUNTY MONUMENT SET
'DQ-6'	405,768.49	2,295,682.10	COUNTY MONUMENT SET
'DQ-7'	401,393.24	2,297,710.34	COUNTY MONUMENT SET
'DQ-8'	400,486.00	2,298,130.88	COUNTY MONUMENT SET
'DQ-9'	399,733.50	2,298,479.50	COUNTY MONUMENT SET
'DQ-10'	398,786.95	2,298,918.37	COUNTY MONUMENT SET
'DQ-11'	396,684.06	2,299,893.12	COUNTY MONUMENT SET
'DQ-12'	395,809.51	2,300,298.52	COUNTY MONUMENT SET
'DQ-13'	389,911.14	2,303,032.77	COUNTY MONUMENT SET
'DR'	389,457.41	2,303,243.10	1.5" O.T.
'DR-1'	389,995.53	2,305,649.36	CMF 4"x4"
'DR-2'	390,047.85	2,305,886.63	CMF 4"x4"
'DR-3'	390,059.79	2,305,935.25	CMF 4"x4"
'DR-4'	390,234.36	2,306,719.43	CMF 4"x4"
'DR-5'	390,526.48	2,308,019.63	CMF 4"x4"
'DR-6'	390,536.36	2,308,063.67	CMF 4"x4"
'DR-7'	391,616.32	2,312,888.95	COUNTY MONUMENT SET
'DR-8'	393,569.67	2,321,616.40	COUNTY MONUMENT SET
'DS'	393,648.75	2,321,969.36	CALCULATED POINT

I HEREBY STATE THAT TO THE BEST OF MY PROFESSIONAL KNOWLEDGE, INFORMATION, AND BELIEF, THE SURVEY SHOWN HEREON WAS MADE IN ACCORDANCE WITH THE REQUIREMENTS OF THE 'STANDARDS OF PRACTICE MANUAL FOR SURVEYING IN SOUTH CAROLINA' (EFFECTIVE JUNE 26, 2009), AS PER ARTICLE 4, REGULATION 49-420 F., THAT THIS MAP OR PLAT IS INTENDED ONLY TO SHOW INFORMATION SURVEYED FOR A SPECIFIC STATED PURPOSE; THAT SURVEY LINES SHOWN HEREON ARE BASED ON ACTUAL FIELD SURVEY EVIDENCE, AND/OR MEASUREMENTS WHICH MEET OR EXCEED THE REQUIREMENTS FOR A CLASS 'A' SURVEY AS SPECIFIED THEREIN.

NOT VALID UNLESS SIGNED IN RED INK

REVIEW ONLY

CORNERSTONE SURVEYING & ENGINEERING, INC.
000037
DAVID BRATTON
C.O.A. STAMP EMBOSSED SEAL



MATCH LINE ~ (See Sheet 3 of 13)

GRID NORTH
NAD 83 (2011 ADJUSTMENT)

This is not a valid, true copy of this document unless bearing on the embossed seal of the surveyor or engineer.
Copyright 2020, CORNERSTONE SURVEYING & ENGINEERING, INC. All rights reserved. Reproduction or use of this document, in whole or in part, without permission is prohibited.
Print No. / /
Date / /

CORNERSTONE
SURVEYING & ENGINEERING, INC.
1240 Bacon Bridge Rd. • Summerville • South Carolina • 29485 • Phone: 843-871-9706

A PLAT OF A PORTION OF THE CHARLESTON-BERKELEY COUNTY LINE STARTING AT THE 'FINUCAN MONUMENT' AT THE COMMON 'TRI' CORNER OF BERKELEY, CHARLESTON, AND DORCHESTER COUNTIES, EAST, SOUTHEAST OF THE TOWN OF SUMMERVILLE, S.C. LOCATED 1500± NORTH OF THE INTERSECTION OF E. 5TH N STREET (U.S. HWY. 78) AND FINUCAN ROAD (LOCAL ROAD), THEN SOUTHEASTERLY ALONG THE ORIGINAL CENTERLINE OF THE 'LADSON FARM GROUNDS' TOWARDS THE INTERSECTION WITH THE ORIGINAL CENTERLINE OF ANGRUM ROAD (S-8-1228), THEN RUNNING NORTHEASTERLY THROUGH A SERIES OF CORNERS UNTIL REACHING THE WESTERN R/W OF THE SOUTHERN RAIL ROAD, THEN IN A SOUTHERN DIRECTION TO THE INTERSECTION WITH REMOUNT ROAD (S-10-13) THEN EASTERLY DIRECTION TO A POINT AT THE MOUTH OF 'GOOSE CREEK' AND THE 'COOPER RIVER' EAST OF THE CITY OF NORTH CHARLESTON, S.C.

Date of Map: 9/23/2020
 Drawn: AWK
 Design: RDB/AWK
 Checked: KAW/RDB
 Approved: RDB
 CAD File: 17022-001 CHAS-BERK.dwg
 F.B. & Pg. _____
 P.B. & Pg. _____
 Pl.Board Appl.# _____
 Date _____ Revision No. _____
 Proj. No.: 17022-001
 Sheet 2 of 13

NOTE:
FOR 'ADDITIONAL NOTES' SEE SHEETS 1 & 2.

This is not a valid, true copy of this document unless bearing on the embossed seal of the surveyor or engineer.
Copyright 2020, CORNERSTONE SURVEYING & ENGINEERING, INC. All rights reserved. Reproduction or use of this document, in whole or in part, without permission is prohibited.
Print No. _____
Date: 7/11/2017

CORNERSTONE
SURVEYING & ENGINEERING, INC.
1240 Bocons Bridge Rd. • Summerville • South Carolina • 29485 • Phone: 843-871-9706

MATCH LINE ~ (See Sheet 2 of 13)
1.5" O.T. BV-2

~ BERKELEY COUNTY ~

~ CHARLESTON COUNTY ~

~ BERKELEY COUNTY ~

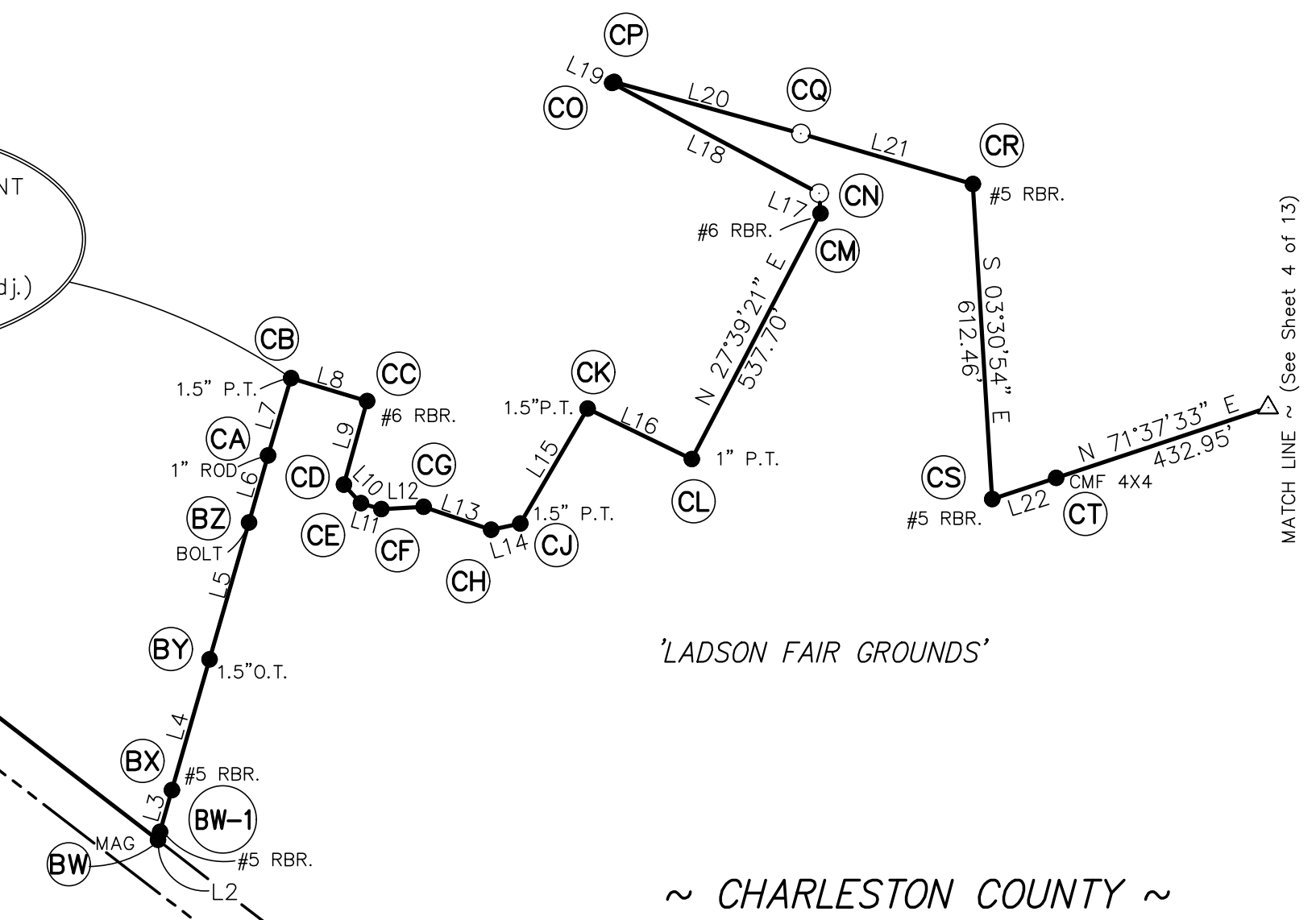
~ CHARLESTON COUNTY ~

LINE TABLE

Line Table (Existing County Line)

Line #	Length	Direction
L1	106.06'	S52° 22' 11"E
L2	16.11'	N15° 54' 11"E
L3	84.42'	N15° 38' 29"E
L4	263.84'	N16° 02' 11"E
L5	276.16'	N16° 05' 55"E
L6	134.88'	N15° 51' 34"E
L7	156.92'	N16° 39' 33"E
L8	153.94'	S73° 06' 53"E
L9	168.19'	S15° 29' 52"W
L10	48.66'	S42° 32' 53"E
L11	41.24'	S73° 56' 09"E
L12	82.09'	N87° 00' 02"E
L13	138.17'	S71° 11' 34"E
L14	57.72'	N77° 38' 17"E
L15	258.15'	N30° 23' 41"E
L16	224.57'	S64° 14' 21"E
L17	39.06'	N03° 40' 04"W
L18	455.08'	S61° 57' 43"E
L19	4.36'	N59° 54' 12"E
L20	375.57'	S74° 32' 44"E
L21	347.67'	S73° 38' 21"E
L22	130.71'	N71° 37' 19"E

'CB' COUNTY LINE MONUMENT
IPF 1.5" O.T.
N: 425,880.00
E: 2,272,056.51
SCSPC NAD 83 (2011 Adj.)



A PLAT OF A PORTION OF THE CHARLESTON-BERKELEY COUNTY LINE STARTING AT THE 'FINUCAN MONUMENT' AT THE COMMON 'TRI' CORNER OF BERKELEY, CHARLESTON, AND DORCHESTER COUNTIES, EAST, SOUTHEAST OF THE TOWN OF SUMMERVILLE, S.C. LOCATED 1500'± NORTH OF THE INTERSECTION OF E. 5TH N STREET (U.S. HWY. 78) AND FINUCAN ROAD (LOCAL ROAD), THEN SOUTHEASTERLY ALONG THE ORIGINAL CENTERLINE OF 'LADSON FAIR GROUNDS' TOWARDS THE INTERSECTION WITH THE ORIGINAL CENTERLINE OF ANGRUM ROAD (S-8-1228), THEN RUNNING NORTHEASTERLY THROUGH A SERIES OF CORNERS UNTIL REACHING THE WESTERN R/W OF THE SOUTHERN RAIL ROAD, THEN IN A SOUTHERN DIRECTION TO THE INTERSECTION WITH REMOUNT ROAD (S-10-13) THEN EASTERLY DIRECTION TO A POINT AT THE MOUTH OF 'GOOSE CREEK' AND THE 'COOPER RIVER' EAST OF THE CITY OF NORTH CHARLESTON, S.C.

I HEREBY STATE THAT TO THE BEST OF MY PROFESSIONAL KNOWLEDGE, INFORMATION, AND BELIEF, THE SURVEY SHOWN HEREON WAS MADE IN ACCORDANCE WITH THE REQUIREMENTS OF THE 'STANDARDS OF PRACTICE MANUAL FOR SURVEYING IN SOUTH CAROLINA' (EFFECTIVE JUNE 26, 2009), AS PER ARTICLE 4, REGULATION 49-420 F., THAT THIS MAP OR PLAT IS INTENDED ONLY TO SHOW INFORMATION SURVEYED FOR A SPECIFIC STATED PURPOSE; THAT SURVEY LINES SHOWN HEREON ARE BASED ON ACTUAL FIELD SURVEY EVIDENCE AND/OR MEASUREMENTS WHICH MEET OR EXCEED THE REQUIREMENTS FOR A CLASS 'A' SURVEY AS SPECIFIED THEREIN.

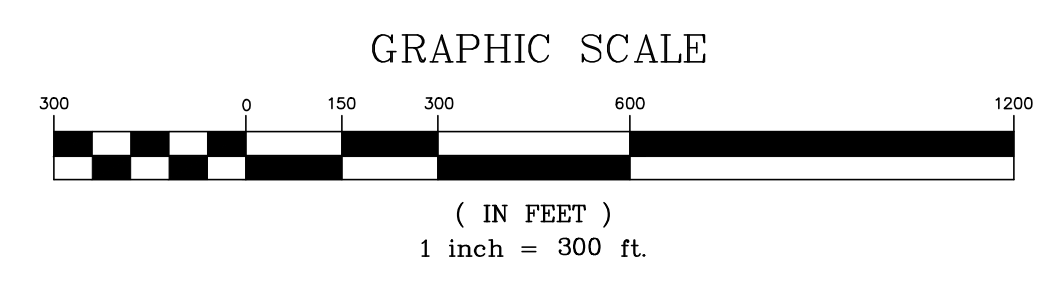
NOT VALID UNLESS SIGNED IN RED INK

REVIEW ONLY

CORNERSTONE SURVEYING & ENGINEERING, INC.
C.O.A.

DAVID BRATTON
STAMP

EMBOSSSED SEAL



Date of Map: 7/11/2017

□ Drawn: AWK
□ Design: RDB/AWK
□ Checked: KAW/RDB
□ Approved: RDB

CAD File: 17022-001 CHAS-BERK.dwg
F.B. & Pg. _____
P.B. & Pg. _____
Pl.Board Appl.# _____

Date	Revision No.

Proj. No.: 17022-001
Sheet 3 of 13

NOTE:
FOR 'ADDITIONAL NOTES' SEE SHEET 1.

This is not a valid, true copy of the document unless bearing on the embossed seal of the surveyor or engineer.
 © Copyright 2020, CORNERSTONE SURVEYING & ENGINEERING, INC. All rights reserved. Reproduction or use of this document, in whole or in part, without permission is prohibited.
 Print No. _____
 Date: ____/____/____

CORNERSTONE
 SURVEYING & ENGINEERING, INC.
 1240 Bacons Bridge Rd. • Summerville • South Carolina • 29485 • Phone: 843-871-9706

A PLAT OF A PORTION OF THE CHARLESTON-BERKELEY COUNTY LINE STARTING AT THE 'FINUCAN MONUMENT' AT THE COMMON 'TRI' CORNER OF BERKELEY, CHARLESTON, AND DORCHESTER COUNTIES, EAST, SOUTHEAST OF THE TOWN OF SUMMERVILLE, S.C. LOCATED 1500'± NORTH OF THE INTERSECTION OF E. 5TH N STREET (U.S. HWY. 78) AND FINUCAN ROAD (LOCAL ROAD), THEN SOUTHEASTERLY ALONG THE ORIGINAL CENTERLINE OF ANCRUM ROAD (S-8-1228), THEN RUNNING NORTHEASTERLY THROUGH A SERIES OF CORNERS UNTIL REACHING THE WESTERN R/W OF THE SOUTHERN RAIL ROAD, THEN IN A SOUTHERN DIRECTION TO THE INTERSECTION WITH REMOUNT ROAD (S-10-13) THEN EASTERLY DIRECTION TO A POINT AT THE MOUTH OF 'GOOSE CREEK' AND THE 'COOPER RIVER' EAST OF THE CITY OF NORTH CHARLESTON, S.C.

Date of Map: 7/11/2017
 Drawn: AWK
 Design: RDB/AWK
 Checked: KAW/RDB
 Approved: RDB
 CAD File: 17022-001 CHAS-BERK.dwg
 F.B. & Pg. _____
 P.B. & Pg. _____
 Pl. Board Appl. # _____

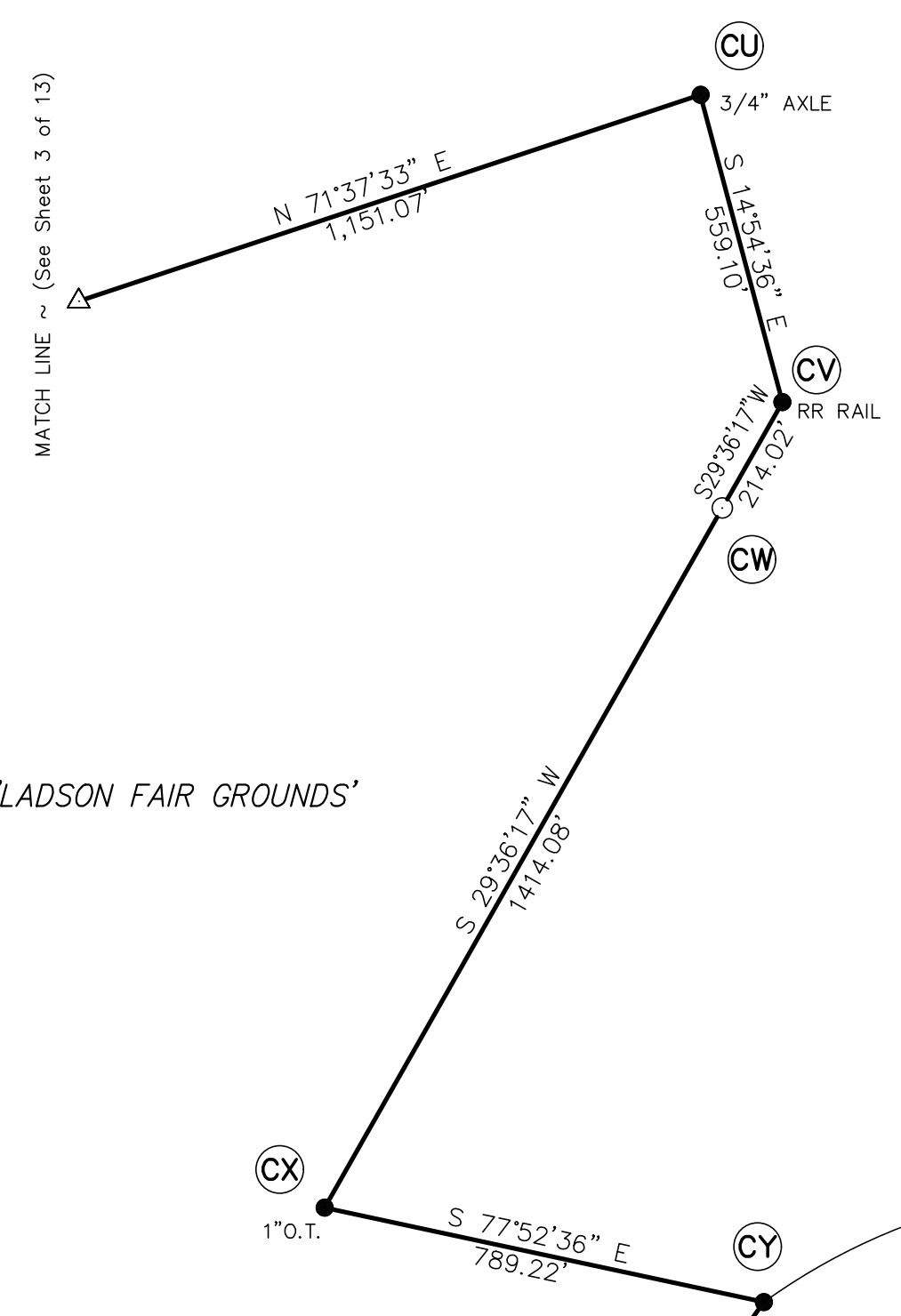
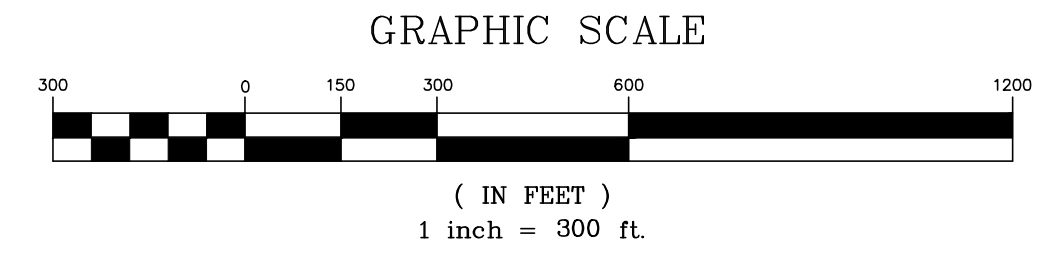
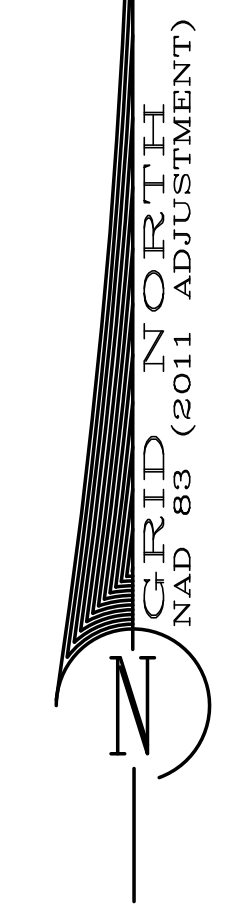
Date	Revision No.

 Proj. No.: 17022-001
 Sheet 4 of 13

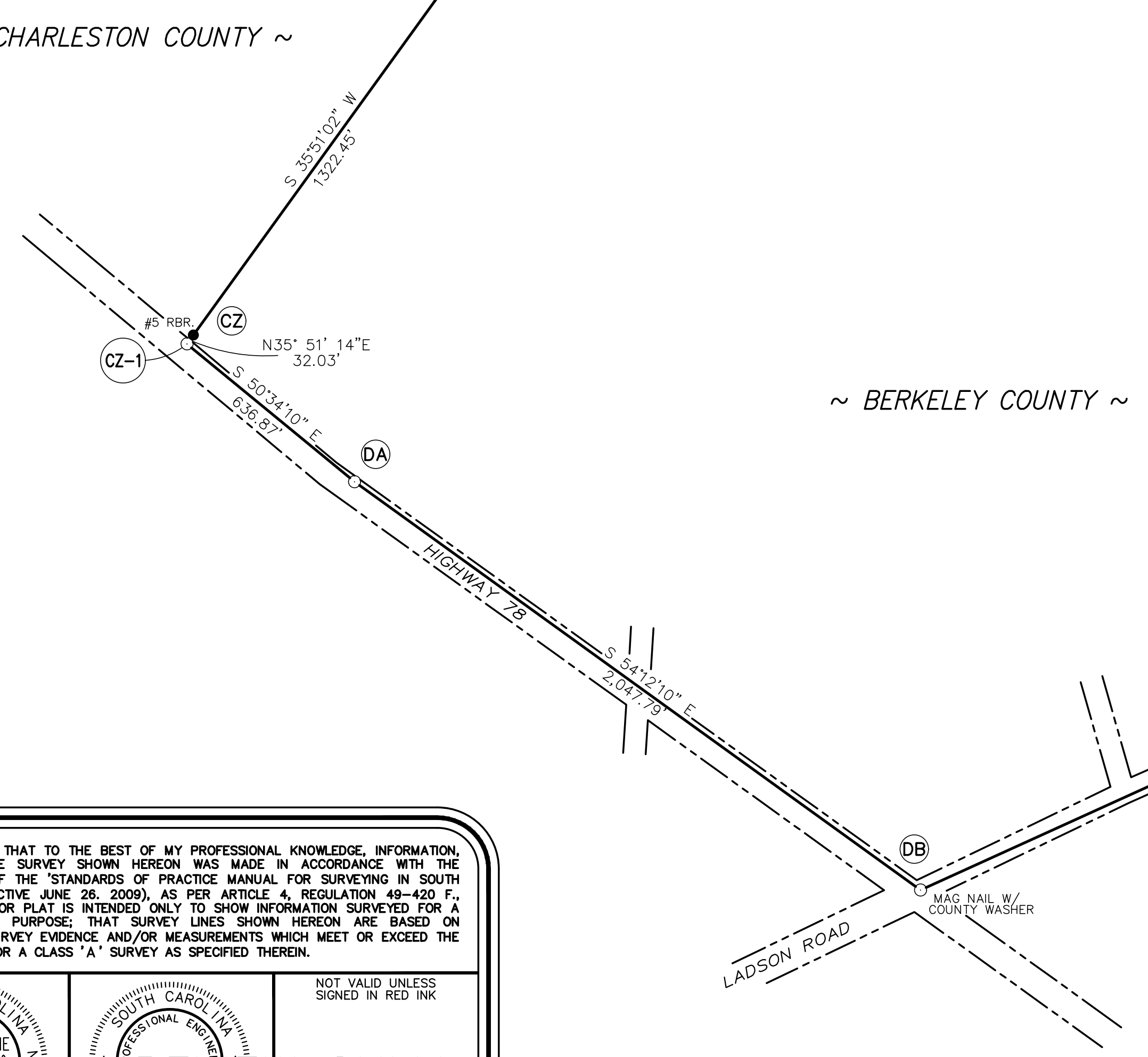
LINE TABLE

Line Table (Existing County Line)

Line #	Length	Direction
L23	267.73'	N62° 57' 21"E
L24	259.02'	S66° 36' 58"W
L25	149.91'	S82° 11' 38"W
L26	51.44'	S15° 38' 58"W
L27	74.45'	N66° 42' 51"E
L28	60.22'	N76° 40' 07"W
L29	133.38'	S39° 05' 52"E
L30	83.25'	N33° 52' 15"W
L31	236.86'	N12° 48' 53"W



'CY' COUNTY LINE MONUMENT
 I.P.F. #5 REBAR
 N: 424,064.09
 E: 2,275,154.21
 SCSPC NAD 83 (2011 Adj.)



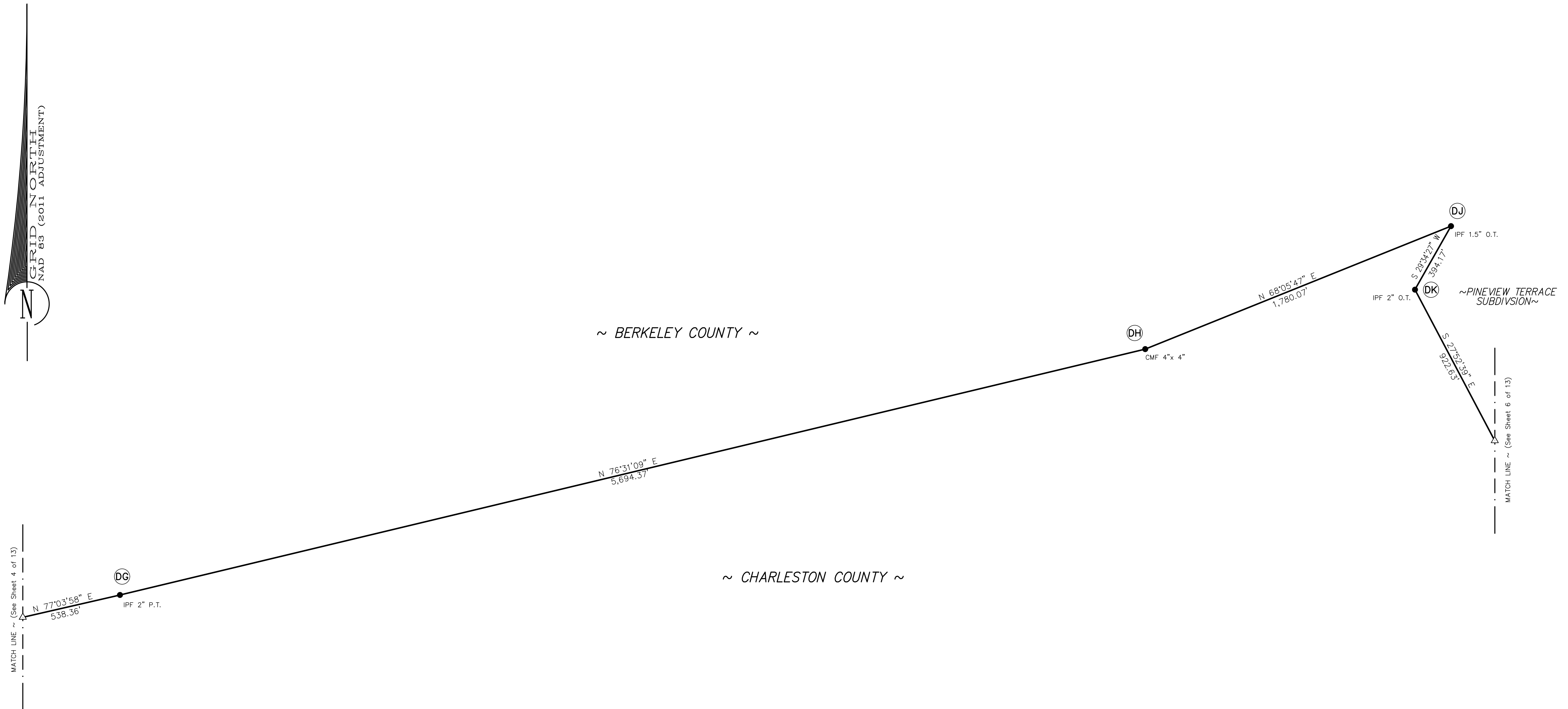
I HEREBY STATE THAT TO THE BEST OF MY PROFESSIONAL KNOWLEDGE, INFORMATION, AND BELIEF, THE SURVEY SHOWN HEREON WAS MADE IN ACCORDANCE WITH THE REQUIREMENTS OF THE 'STANDARDS OF PRACTICE MANUAL FOR SURVEYING IN SOUTH CAROLINA' (EFFECTIVE JUNE 26, 2009), AS PER ARTICLE 4, REGULATION 49-420 F., THAT THIS MAP OR PLAT IS INTENDED ONLY TO SHOW INFORMATION SURVEYED FOR A SPECIFIC STATED PURPOSE; THAT SURVEY LINES SHOWN HEREON ARE BASED ON ACTUAL FIELD SURVEY EVIDENCE, AND/OR MEASUREMENTS WHICH MEET OR EXCEED THE REQUIREMENTS FOR A CLASS 'A' SURVEY AS SPECIFIED THEREIN.

NOT VALID UNLESS SIGNED IN RED INK

REVIEW ONLY

CORNERSTONE SURVEYING & ENGINEERING, INC.
 C.O.A. STAMP EMBOSSED SEAL

NOTE:
FOR 'ADDITIONAL NOTES' SEE SHEET 1.



MERIDIAN NORTH
 NAD 83 (2011 ADJUSTMENT)

MATCH LINE ~ (See Sheet 4 of 13)

MATCH LINE ~ (See Sheet 6 of 13)

~ BERKELEY COUNTY ~

~ CHARLESTON COUNTY ~

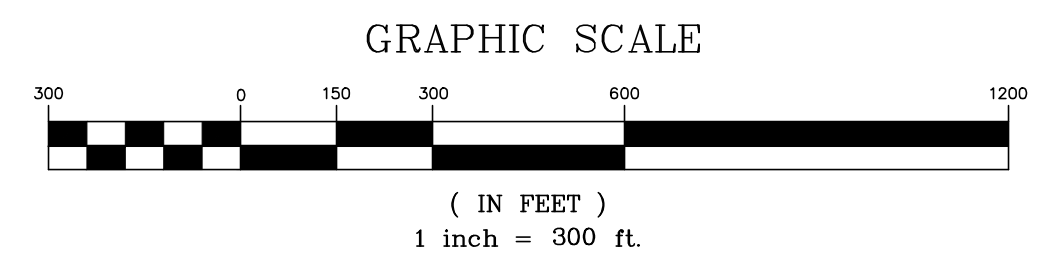
This is not a valid, true copy of
 the document unless bearing on
 the embossed seal of the surveyor or
 engineer.
 Copyright 2020, CORNERSTONE
 SURVEYING & ENGINEERING, INC.
 All rights reserved. Reproduction
 or use of this document, in whole
 or in part, without permission
 is prohibited.
 Print No. _____
 Date: ____/____/____

CORNERSTONE
SURVEYING & ENGINEERING, INC.
 1240 Bocons Bridge Rd. • Summerville • South Carolina • 29485 • Phone: 843-871-9706

A PLAT OF A PORTION OF THE
CHARLESTON-BERKELEY COUNTY LINE
 STARTING AT THE 'FINUCAN MONUMENT' AT THE COMMON 'TRI' CORNER OF BERKELEY,
 CHARLESTON, AND DORCHESTER COUNTIES, EAST, SOUTHEAST OF THE TOWN OF SUMMERVILLE, S.C.
 LOCATED 1500± NORTH OF THE INTERSECTION OF
 E. 5TH N STREET (U.S. HWY. 78) AND FINUCAN ROAD (LOCAL ROAD), THEN SOUTHEASTERLY ALONG
 THE ORIGINAL CENTERLINE OF U.S. HWY. 78 RUNNING AROUND THE 'LADSON FARM GROUNDS' TOWARDS THE INTERSECTION,
 WITH THE ORIGINAL CENTERLINE OF ANGRUM ROAD (S-8-1228), THEN RUNNING NORTHEASTERLY
 THROUGH A SERIES OF CORNERS UNTIL REACHING THE WESTERN R/W OF THE 'SOUTHERN RAIL ROAD',
 THEN IN A SOUTHERN DIRECTION TO THE INTERSECTION WITH REMOUNT ROAD (S-10-13)
 THEN EASTERLY DIRECTION TO A POINT AT THE MOUTH OF 'GOOSE CREEK' AND THE 'COOPER RIVER'
 EAST OF THE CITY OF NORTH CHARLESTON, S.C.

I HEREBY STATE THAT TO THE BEST OF MY PROFESSIONAL KNOWLEDGE, INFORMATION,
 AND BELIEF, THE SURVEY SHOWN HEREON WAS MADE IN ACCORDANCE WITH THE
 REQUIREMENTS OF THE 'STANDARDS OF PRACTICE MANUAL FOR SURVEYING IN SOUTH
 CAROLINA' (EFFECTIVE JUNE 26, 2009), AS PER ARTICLE 4, REGULATION 49-420 F.,
 THAT THIS MAP OR PLAT IS INTENDED ONLY TO SHOW INFORMATION SURVEYED FOR A
 SPECIFIC STATED PURPOSE; THAT SURVEY LINES SHOWN HEREON ARE BASED ON
 ACTUAL FIELD SURVEY EVIDENCE AND/OR MEASUREMENTS WHICH MEET OR EXCEED THE
 REQUIREMENTS FOR A CLASS 'A' SURVEY AS SPECIFIED THEREIN.

		NOT VALID UNLESS SIGNED IN RED INK
CORNERSTONE SURVEYING & ENGINEERING, INC. C.O.A.	REVIT W ONLY STAMP	EMBOSSED SEAL



Date of Map:
 7/11/2017
 Drawn: AWK
 Design: RDB/AWK
 Checked: KAW/RDB
 Approved: RDB
 CAD File: 17022-001 CHAS-BERK.dwg
 F.B. & Pg. _____
 P.B. & Pg. _____
 Pl. Board Appl. # _____
 Date _____ Revision No. _____

Proj. No.: 17022-001
 Sheet 5 of 13

MATCH LINE ~ (See Sheet 5 of 13)

S 27°52'39" E
2,153.20

DL
IPF 2"O.T.

L32
IPF #5 REBAR
S 66°10'58" E
449.13'

DM

DN

'DN'
COUNTY LINE MONUMENT
I.P.F. #5 REBAR
N: 422,221.47
E: 2,291,607.64
SCSPC NAD 83 (2011 Adj.)

35.24' (ON-LINE)

DO

S 27°51'28" E

2,039.03' (TOTAL)
1,523.79' (ON-LINE)

DP

L33

L34

L35

L36

L37

L38

L39

L40

L41

S 40°15'57" E

608.78' (TD)

DQ

L42

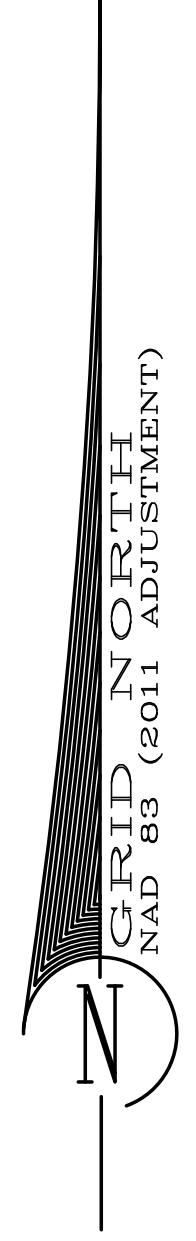
CSX RAIL ROAD

MATCH LINE ~ (See Sheet 7 of 13)

~ BERKELEY COUNTY ~

~ CHARLESTON COUNTY ~

NOTE:
FOR 'ADDITIONAL NOTES' SEE SHEET 1.



LINE TABLE

Line Table (Existing County Line)

Line #	Length	Direction
L32	117.33'	N70° 38' 01"E
L33	174.47'	S83° 10' 48"E
L34	128.89'	S61° 52' 52"E
L35	130.55'	S54° 58' 36"E
L36	124.93'	S76° 26' 34"E
L37	212.93'	N54° 32' 37"E
L38	114.80'	S79° 27' 55"E
L39	128.51'	S39° 48' 18"E
L40	231.86'	S89° 30' 59"E
L41	62.54'	S60° 23' 36"E
L42	232.45'	S05° 09' 48"W

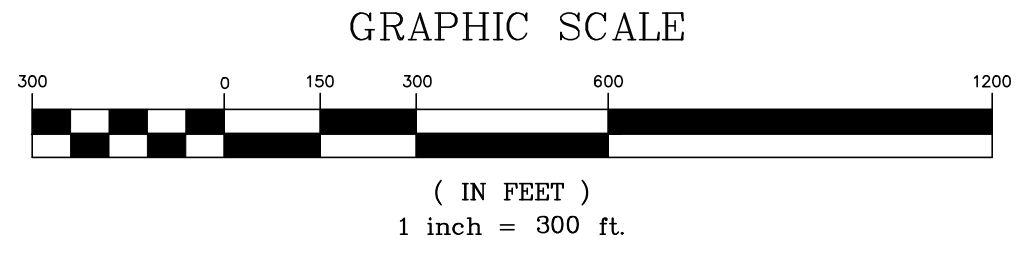
I HEREBY STATE THAT TO THE BEST OF MY PROFESSIONAL KNOWLEDGE, INFORMATION, AND BELIEF, THE SURVEY SHOWN HEREON WAS MADE IN ACCORDANCE WITH THE REQUIREMENTS OF THE 'STANDARDS OF PRACTICE MANUAL FOR SURVEYING IN SOUTH CAROLINA' (EFFECTIVE JUNE 26, 2009), AS PER ARTICLE 4, REGULATION 49-420 F., THAT THIS MAP OR PLAT IS INTENDED ONLY TO SHOW INFORMATION SURVEYED FOR A SPECIFIC STATED PURPOSE; THAT SURVEY LINES SHOWN HEREON ARE BASED ON ACTUAL FIELD SURVEY EVIDENCE, AND/OR MEASUREMENTS WHICH MEET OR EXCEED THE REQUIREMENTS FOR A CLASS 'A' SURVEY AS SPECIFIED THEREIN.

DAVID BRATTO
PROFESSIONAL ENGINEER
000037
STATE OF SOUTH CAROLINA

NOT VALID UNLESS
SIGNED IN RED INK

REVIEW ONLY

C.O.A. STAMP EMBOSSED SEAL



This is not a valid, true copy of this document unless bearing on the embossed seal of the surveyor or engineer.
© Copyright 2020, CORNERSTONE SURVEYING & ENGINEERING, INC. All rights reserved. Reproduction or use of this document, in whole or in part, without permission is prohibited.
Print No. _____
Date: 7/11/2017

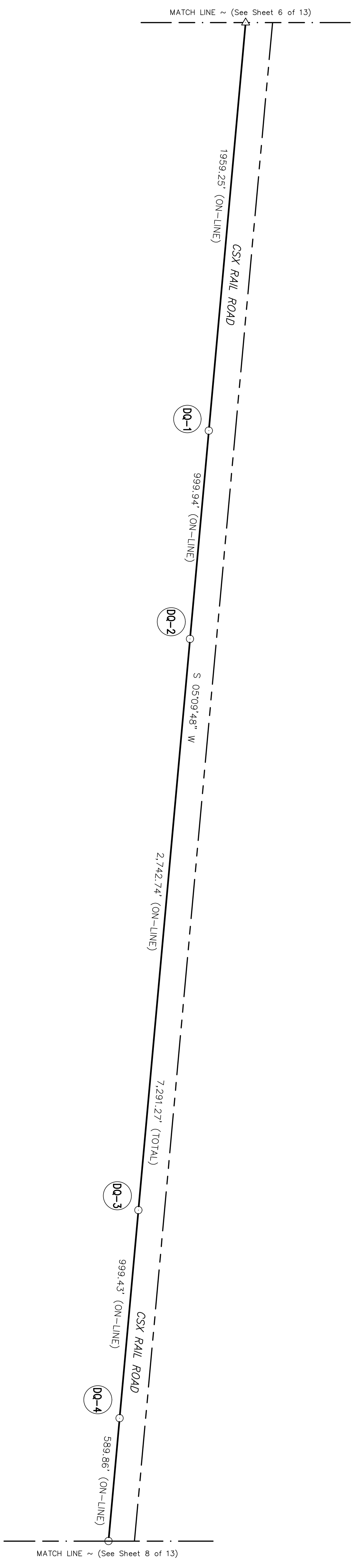
CORNERSTONE
SURVEYING & ENGINEERING, INC.
1240 Bacons Bridge Rd. • Summerville • South Carolina • 29485 • Phone: 843-871-9706

A PLAT OF A PORTION OF THE
CHARLESTON-BERKELEY COUNTY LINE
STARTING AT THE 'FINUCAN MONUMENT' AT THE COMMON 'TRI' CORNER OF BERKELEY, CHARLESTON, AND DORCHESTER COUNTIES, EAST, SOUTHEAST OF THE TOWN OF SUMMERVILLE, S.C. LOCATED 1500'± NORTH OF THE INTERSECTION OF E. 5TH N STREET (U.S. HWY. 78) AND FINUCAN ROAD (LOCAL ROAD), THEN SOUTHEASTERLY ALONG THE ORIGINAL CENTERLINE OF THE 'LADSON FARM GROUNDS' TOWARDS THE INTERSECTION WITH THE ORIGINAL CENTERLINE OF ANGRUM ROAD (S-8-1228), THEN RUNNING NORTHEASTERLY THROUGH A SERIES OF CORNERS UNTIL REACHING THE WESTERN R/W OF THE 'SOUTHERN RAIL ROAD', THEN IN A SOUTHERN DIRECTION TO THE INTERSECTION WITH REMOUNT ROAD (S-10-13) THEN EASTERLY DIRECTION TO A POINT AT THE MOUTH OF 'GOOSE CREEK' AND THE 'COOPER RIVER' EAST OF THE CITY OF NORTH CHARLESTON, S.C.

Date of Map:
7/11/2017
 Drawn: AWK
 Design: RDB/AWK
 Checked: KAW/RDB
 Approved: RDB
 CAD File: 17022-001 CHAS-BERK.dwg
 F.B. & Pg. _____
 P.B. & Pg. _____
 Pl. Board Appl. # _____

Date	Revision No.

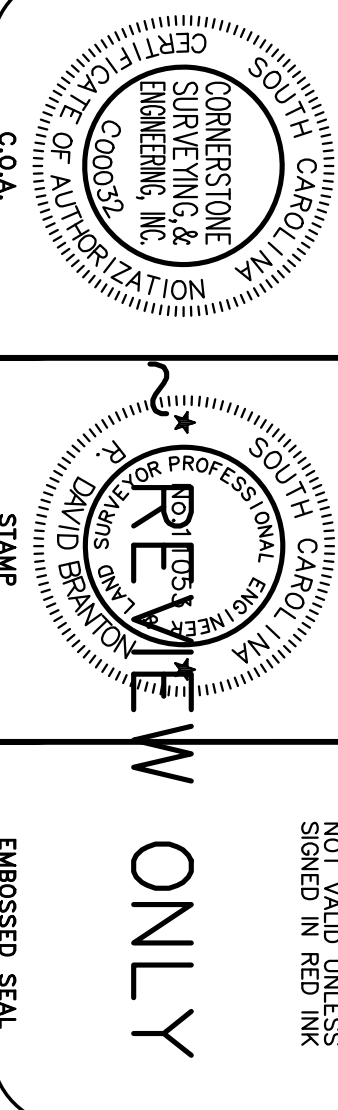
NOTE:
 FOR 'ADDITIONAL NOTES' SEE SHEET 1.



~ BERKELEY COUNTY ~

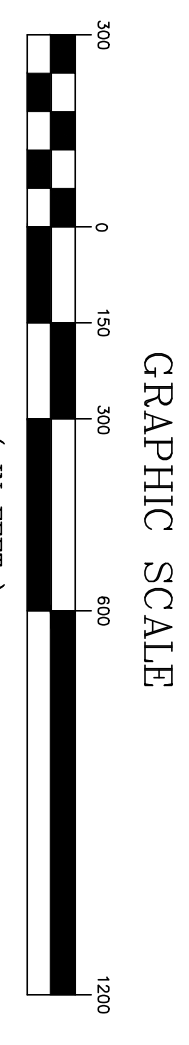
~ CHARLESTON COUNTY ~

I HEREBY STATE THAT TO THE BEST OF MY PROFESSIONAL KNOWLEDGE, INFORMATION, AND BELIEF, THE SURVEY DATA AND CALCULATIONS SHOWN ON THIS MAP OR PLAN ARE CORRECT AND ACCURATE. I AM NOT PROVIDING ANY WARRANTY, EXPRESS OR IMPLIED, FOR THIS MAP OR PLAN. THIS MAP OR PLAN IS INTENDED ONLY TO SHOW INFORMATION SURVEYED FOR A SPECIFIC STATED PURPOSE. THAT SURVEY LINES SHOWN HEREON ARE BASED ON ACTUAL FIELD SURVEY EVIDENCE, AND/OR MEASUREMENTS WHICH MEET OR EXCEED THE REQUIREMENTS FOR A CLASS 'A' SURVEY AS SPECIFIED THEREIN.




NOT VALID UNLESS
 SIGNED IN RED INK

EMBOSSSED SEAL



A PLAT OF A PORTION OF THE
CHARLESTON-BERKELEY COUNTY LINE
 STARTING AT THE "FINUCAN MONUMENT" AT THE COMMON "TRI" CORNER OF BERKELEY, CHARLESTON, AND DORCHESTER COUNTIES, EAST, SOUTHEAST OF THE TOWN OF SUMMERVILLE, S.C. LOCATED 1500± NORTH OF THE INTERSECTION OF E. 5TH N STREET (U.S. HWY. 78) AND FINUCAN ROAD (LOCAL ROAD), THEN SOUTHEASTERLY ALONG THE ORIGINAL CENTERLINE OF ANCRUM ROAD (S-8-1228), THEN RUNNING NORTHEASTERLY THROUGH A SERIES OF CORNERS UNTIL REACHING THE WESTERN R/W OF THE 'SOUTHERN RAIL ROAD', THEN IN A SOUTHERN DIRECTION TO THE INTERSECTION WITH REMOUNT ROAD (S-10-13) THEN EASTERLY DIRECTION TO A POINT AT THE MOUTH OF 'GOOSE CREEK' AND THE 'COOPER RIVER' EAST OF THE CITY OF NORTH CHARLESTON, S.C.



1240 Bacons Bridge Rd. • Summerville • South Carolina • 29485 • Phone: 843-871-9706

This is not a valid, true copy of this document unless bearing an original signature and a raised, embossed seal of the surveyor or engineer.

© Copyright 2020, CORNERSTONE SURVEYING & ENGINEERING, INC. All rights reserved. Reproduction or use of this document, in whole or part without written permission is prohibited.

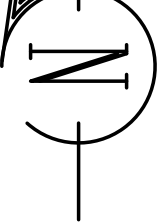
Print No. _____
 Date: / /

Date of Map: 7/11/2017

Drawn: AMK
 Design: RDB/AMK
 Checked: KAW/RDB
 Approved: RDB
 CAD File: 1702-001 CHS-BERK.dwg
 P.B. & P.G. _____
 P.L. Board Appl. # _____
 Date _____
 Revision No. _____

Proj. No.: 17022-001
 Sheet 7 of 13

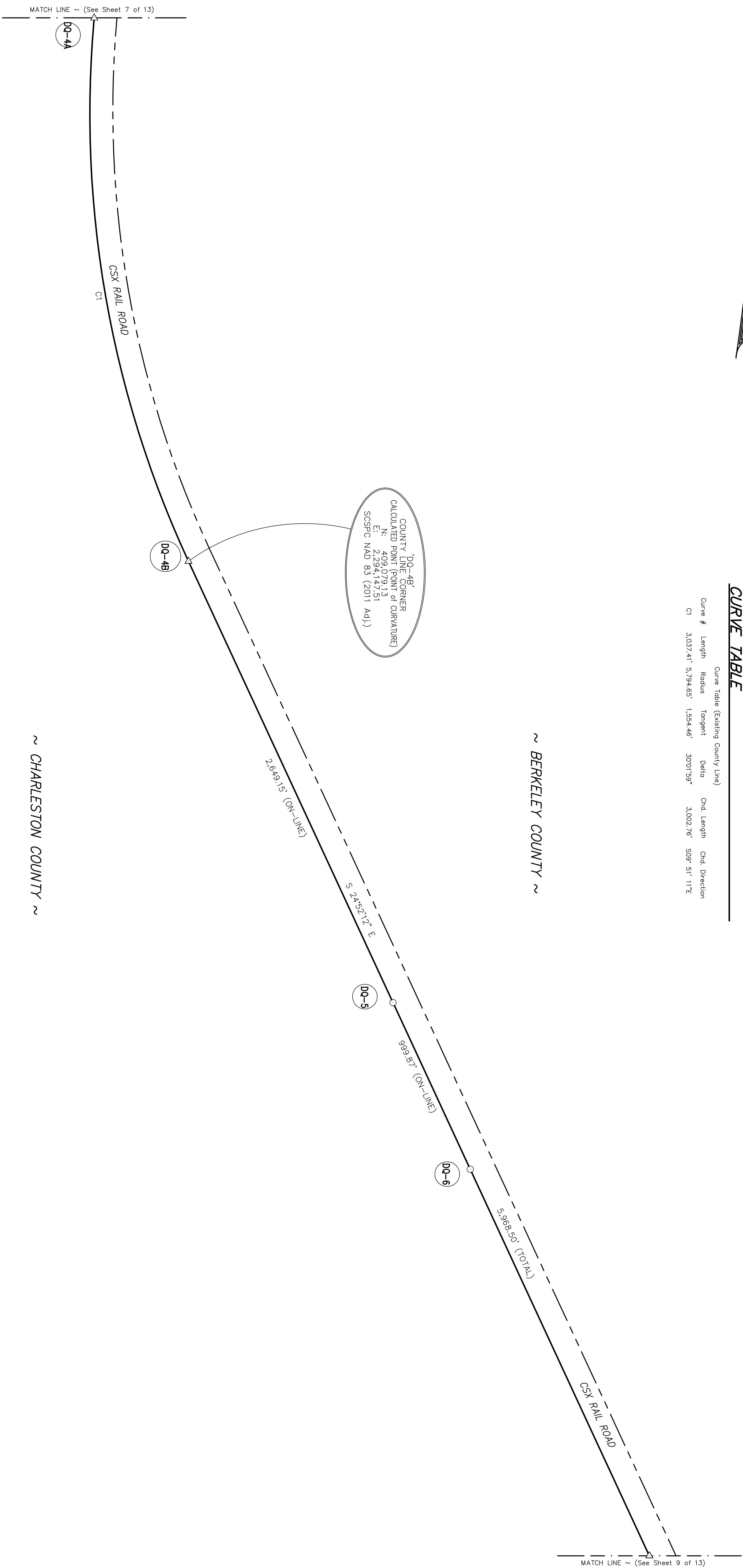
GRID NORTH
NAD83 (2011 Adjustment/SC Zone 3900)



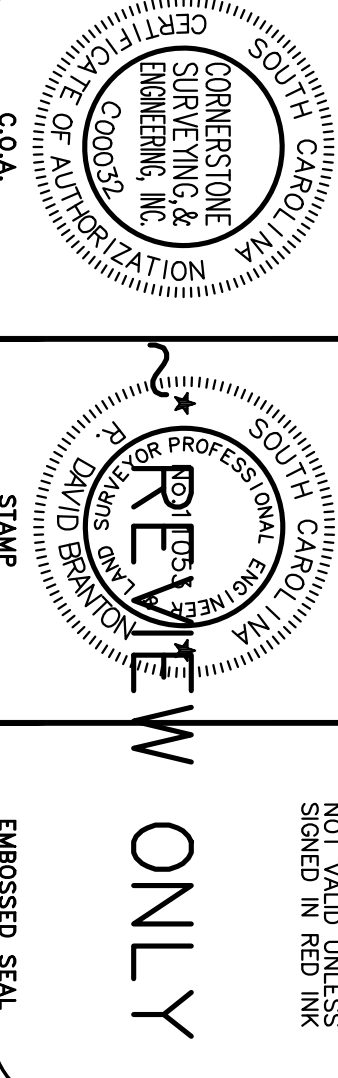
CURVE TABLE

Curve #	Length	Radius	Tangent	Delta	Chd. Length	Chd. Direction
C1	3,037.41'	5,794.65'	1,554.46'	30°01'59"	3,002.76'	S09°51'11"E

NOTE:
FOR ADDITIONAL NOTES SEE SHEET 1.



I HEREBY STATE THAT TO THE BEST OF MY PROFESSIONAL KNOWLEDGE, INFORMATION, AND BELIEF, THE SURVEYING RECORDS AND FIELD DATA ON WHICH THIS MAP OR PLAN IS BASED ARE TRUE AND CORRECT, AND THAT THIS MAP OR PLAN IS INTENDED ONLY TO SHOW INFORMATION SURVEYED FOR A SPECIFIC STATED PURPOSE. THAT SURVEY LINES SHOWN HEREON ARE BASED ON ACTUAL FIELD SURVEY EVIDENCE, AND/OR MEASUREMENTS WHICH MEET OR EXCEED THE REQUIREMENTS FOR A CLASS 'A' SURVEY AS SPECIFIED THEREIN.



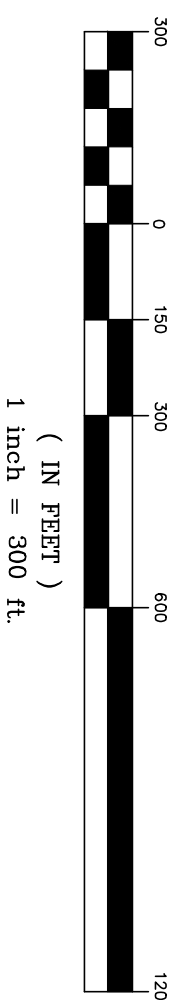
NOT VALID UNLESS
SIGNED IN RED INK

ONLY

~ CHARLESTON COUNTY ~

~ BERKELEY COUNTY ~

GRAPHIC SCALE



A PLAT OF A PORTION OF THE
CHARLESTON-BERKELEY COUNTY LINE
STARTING AT THE "FINUCAN MONUMENT" AT THE COMMON "TRI" CORNER OF BERKELEY, CHARLESTON, AND DORCHESTER COUNTIES, EAST, SOUTHEAST OF THE TOWN OF SUMMERVILLE, S.C. LOCATED 1500'± NORTH OF THE INTERSECTION OF E. 5TH N STREET (U.S. HWY. 78) AND FINUCAN ROAD (LOCAL ROAD), THEN SOUTHEASTERLY ALONG THE ORIGINAL CENTERLINE OF ANCRUM ROAD (S-8-1228), THEN RUNNING NORTHEASTERLY THROUGH A SERIES OF CORNERS UNTIL REACHING THE WESTERN R/W OF THE 'SOUTHERN RAIL ROAD', THEN IN A SOUTHERN DIRECTION TO THE INTERSECTION WITH REMOUNT ROAD (S-10-13) THEN EASTERLY DIRECTION TO A POINT AT THE MOUTH OF 'GOOSE CREEK' AND THE 'COOPER RIVER' EAST OF THE CITY OF NORTH CHARLESTON, S.C.

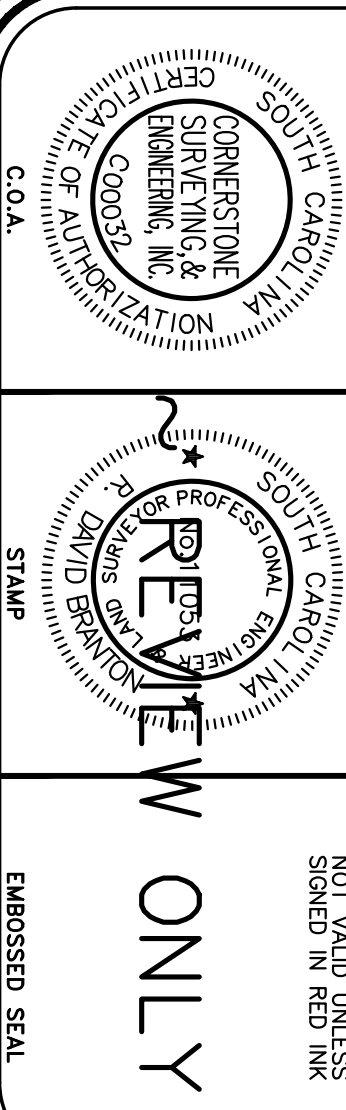
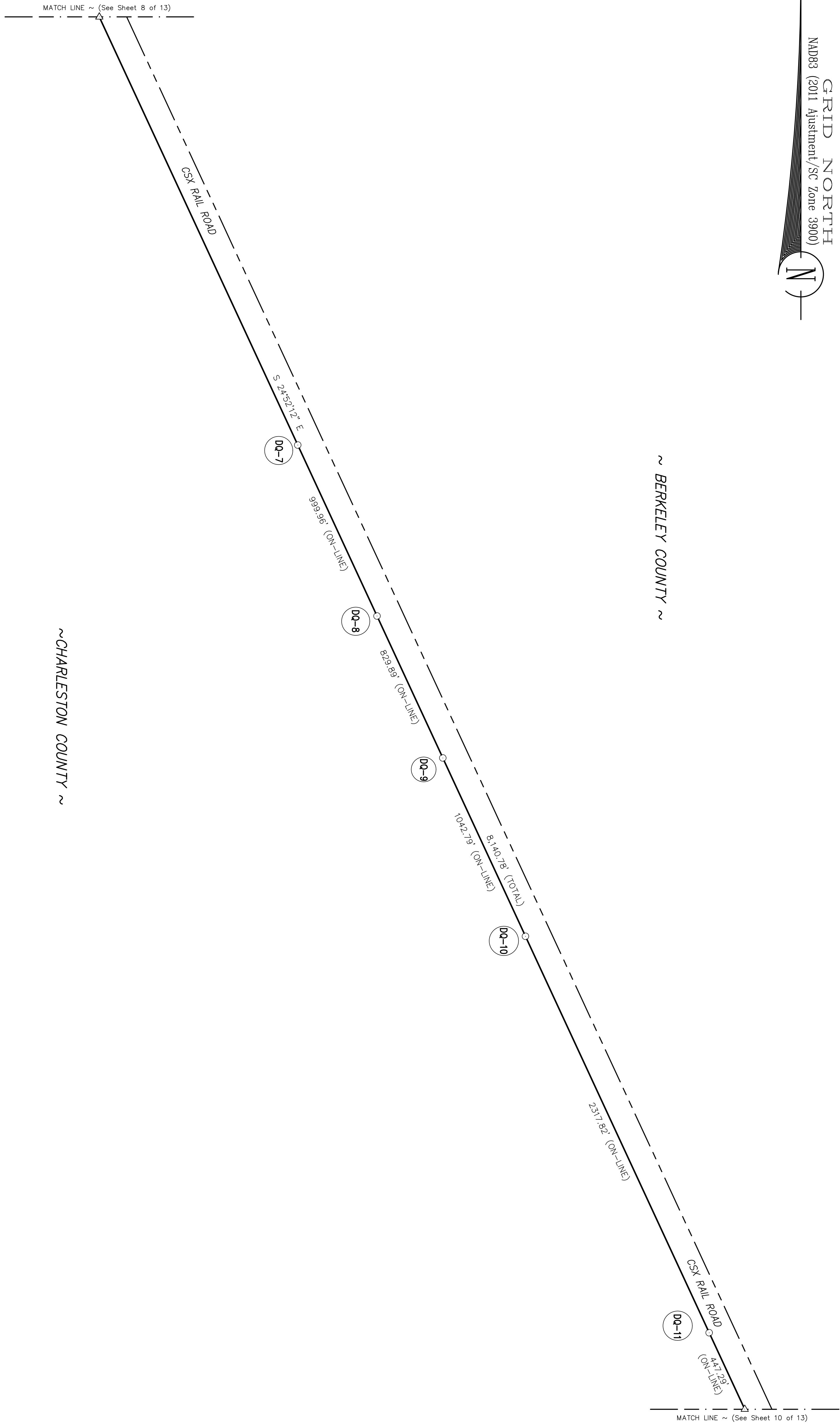
CORNERSTONE
SURVEYING & ENGINEERING, INC.
1240 Bacons Bridge Rd. • Summerville • South Carolina • 29485 • Phone: 843-871-9706

This is not a valid, true copy of this document unless bearing an original signature and a raised, embossed seal of the surveyor or engineer.
© Copyright 2020, CORNERSTONE SURVEYING & ENGINEERING, INC. All rights reserved. Reproduction or use of this document, in whole or part without written permission is prohibited.
Print No. _____
Date: / /

Date of Map: 7/11/2017
Drawn: AMK
Design: RDB/AMK
Checked: KAW/RDB
Approved: RDB
CAD File: 17022-001 (KAS-BERK.dwg)
P.B. & P.G. _____
P.L. Board Appl. # _____
Date _____
Revision No. _____
Proj. No.: 17022-001
Sheet 8 of 13

GRID NORTH
NAD83 (2011 Adjustment/SC Zone 3900)

NOTE:
FOR ADDITIONAL NOTES, SEE SHEET 1.

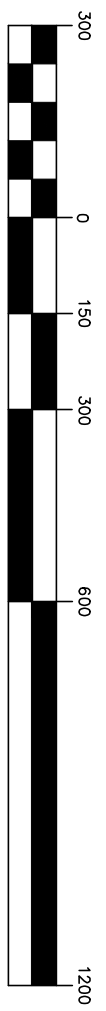


I HEREBY STATE THAT TO THE BEST OF MY PROFESSIONAL KNOWLEDGE, INFORMATION, AND BELIEF, THE PLAT SHOWN HEREON ACCURATELY REPRESENTS THE ACTUAL FIELD SURVEY EVIDENCE, AND/OR MEASUREMENTS WHICH MEET OR EXCEED THE REQUIREMENTS FOR A CLASS 'A' SURVEY AS SPECIFIED THEREIN.

NOT VALID UNLESS SIGNED IN RED INK

~CHARLESTON COUNTY~

~BERKELEY COUNTY~



GRAPHIC SCALE

A PLAT OF A PORTION OF THE
CHARLESTON-BERKELEY COUNTY LINE
STARTING AT THE "FINUCAN MONUMENT" AT THE COMMON "TRI" CORNER OF BERKELEY, CHARLESTON, AND DORCHESTER COUNTIES, EAST, SOUTHEAST OF THE TOWN OF SUMMERVILLE, S.C. LOCATED 1500'± NORTH OF THE INTERSECTION OF E. 5TH N STREET (U.S. HWY. 78) AND FINUCAN ROAD (LOCAL ROAD), THEN SOUTHEASTERLY ALONG WITH THE ORIGINAL CENTERLINE OF ANCRUM ROAD (S-8-1228), THEN RUNNING NORTHEASTERLY THROUGH A SERIES OF CORNERS UNTIL REACHING THE WESTERN R/W OF THE 'SOUTHERN RAIL ROAD', THEN IN A SOUTHERN DIRECTION TO THE INTERSECTION WITH REMOUNT ROAD (S-10-13) THEN EASTERLY DIRECTION TO A POINT AT THE MOUTH OF 'GOOSE CREEK' AND THE 'COOPER RIVER' EAST OF THE CITY OF NORTH CHARLESTON, S.C.

CORNERSTONE
SURVEYING & ENGINEERING, INC.
1240 Bacons Bridge Rd. • Summerville • South Carolina • 29485 • Phone: 843-871-9706

This is not a valid, true copy of this document unless bearing an original signature and a raised, embossed seal of the surveyor or engineer.

© Copyright 2020, CORNERSTONE SURVEYING & ENGINEERING, INC. All rights reserved. Reproduction or use of this document, in whole or part without written permission is prohibited.

Print No. _____
Date: / /

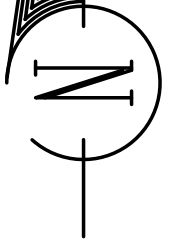
Date of Map: 7/11/2017

Drawn: AMK
Design: RDB/AMK
Checked: KAW/RDB
Approved: RDB

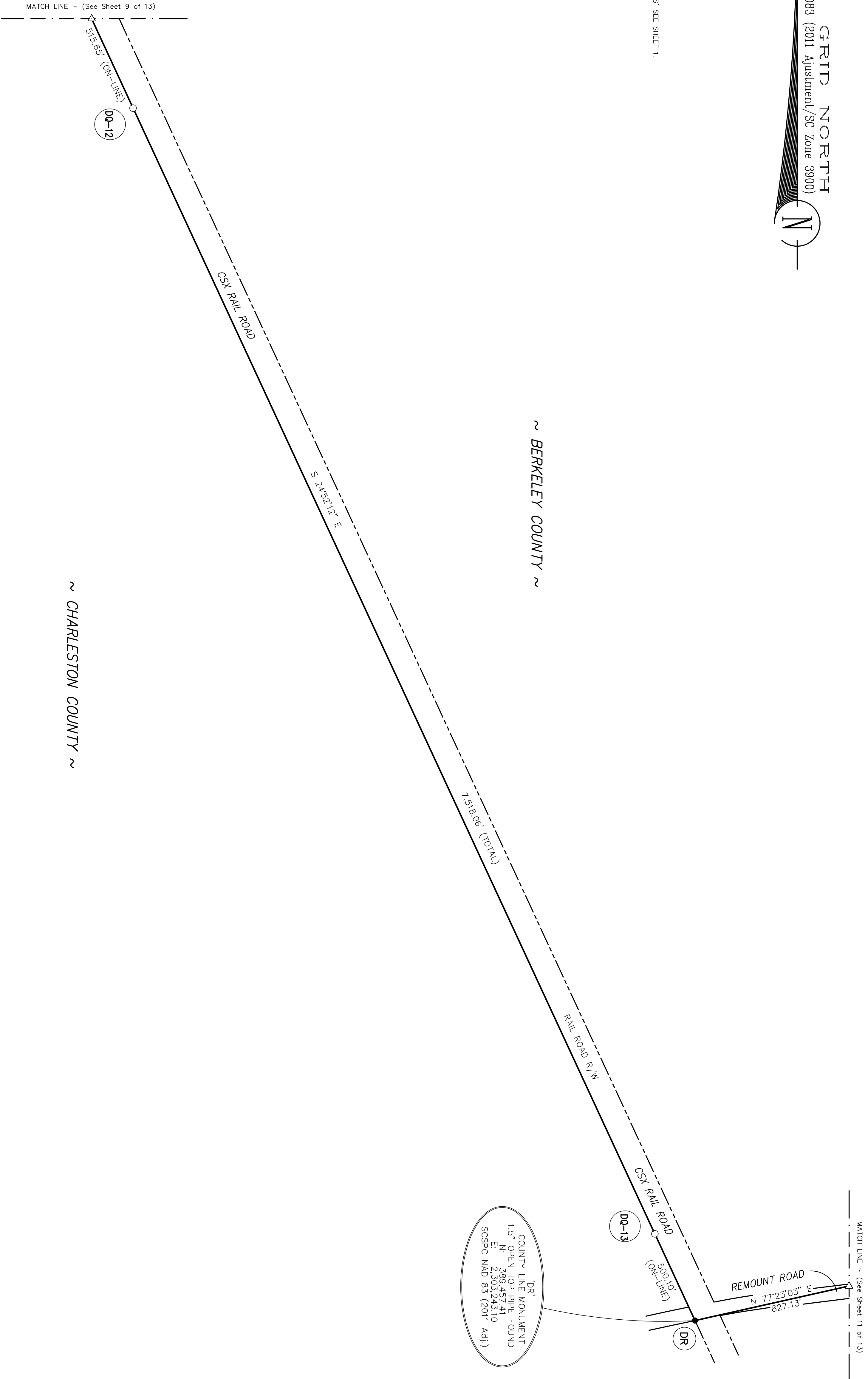
CAD File: 1702-001 CHS-BERK.dwg
P.B. & Pg. # _____
P.L. Board App'l. # _____
Date: _____
Revision No. _____

Proj. No.: 17022-001
Sheet 9 of 13

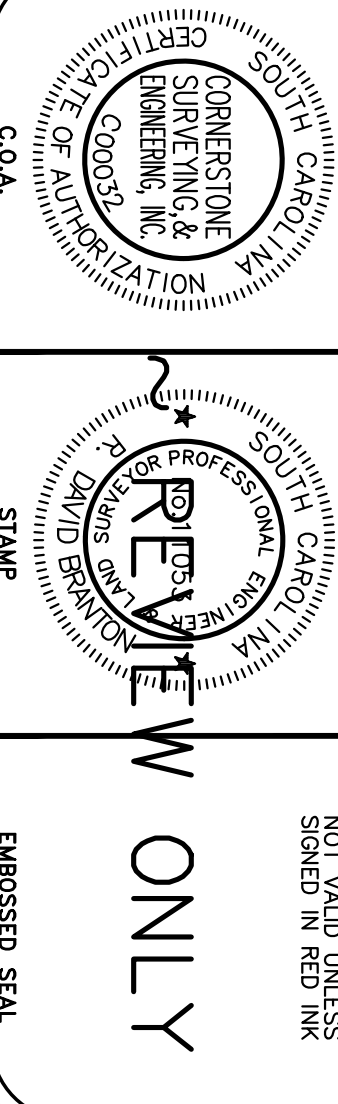
GRID NORTH
NAD83 (2011 Adjustment/SC Zone 3900)



NOTE:
FOR ADDITIONAL NOTES SEE SHEET 1.



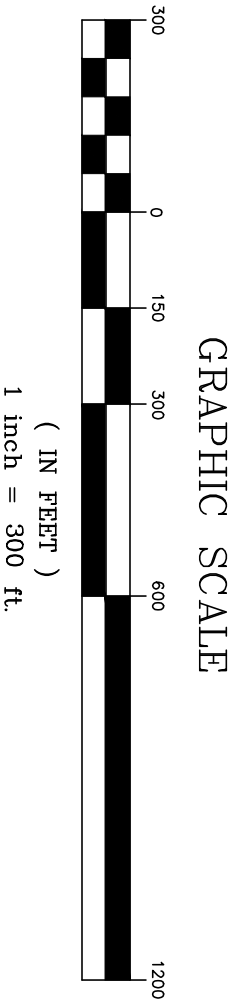
I HEREBY STATE THAT TO THE BEST OF MY PROFESSIONAL KNOWLEDGE, INFORMATION, AND BELIEF, THIS SURVEY ACCURATELY REPRESENTS THE ACTUAL FIELD SURVEY EVIDENCE, AND/OR MEASUREMENTS WHICH MEET OR EXCEED THE REQUIREMENTS FOR A CLASS 'A' SURVEY AS SPECIFIED THEREIN.



NOT VALID UNLESS
SIGNED IN RED INK

ONLY

EMBOSSED SEAL



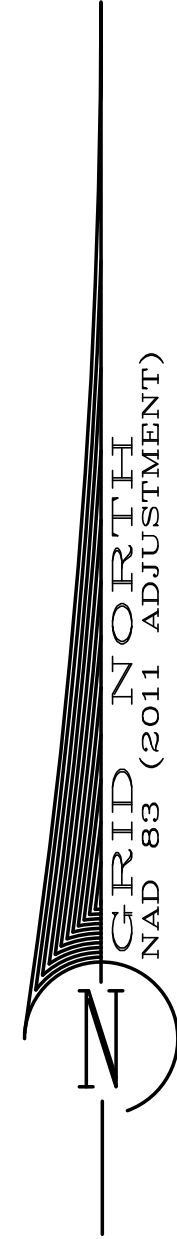
A PLAT OF A PORTION OF THE
CHARLESTON-BERKELEY COUNTY LINE
STARTING AT THE "FINUCAN MONUMENT" AT THE COMMON "TRI" CORNER OF BERKELEY, CHARLESTON, AND DORCHESTER COUNTIES, EAST, SOUTHEAST OF THE TOWN OF SUMMERVILLE, S.C. LOCATED 1500'± NORTH OF THE INTERSECTION OF E. 5TH N STREET (U.S. HWY. 78) AND FINUCAN ROAD (LOCAL ROAD), THEN SOUTHEASTERLY ALONG THE ORIGINAL CENTERLINE OF ANCRUM ROAD (S-8-1228), THEN RUNNING NORTHEASTERLY THROUGH A SERIES OF CORNERS UNTIL REACHING THE WESTERN R/W OF THE 'SOUTHERN RAIL ROAD', THEN IN A SOUTHERN DIRECTION TO THE INTERSECTION WITH REMOUNT ROAD (S-10-13) THEN EASTERLY DIRECTION TO A POINT AT THE MOUTH OF 'GOOSE CREEK' AND THE 'COOPER RIVER' EAST OF THE CITY OF NORTH CHARLESTON, S.C.

CORNERSTONE
SURVEYING & ENGINEERING, INC.
1240 Bacons Bridge Rd. • Summerville • South Carolina • 29485 • Phone: 843-871-9706

This is not a valid, true copy of this document unless bearing an original signature and a raised, embossed seal of the surveyor or engineer.
© Copyright 2020, CORNERSTONE SURVEYING & ENGINEERING, INC. All rights reserved. Reproduction or use of this document, in whole or part without written permission is prohibited.
Print No. _____
Date: ____/____/____

Date of Map: 7/11/2017
 Drawn: AMK
 Design: RDB/AMK
 Checked: KAW/RDB
 Approved: RDB
 CAD File: 1702-001 CHS-BERK.dwg
 P.B. & Pg. _____
 Plotted: _____
 Date: _____
 Revision No. _____

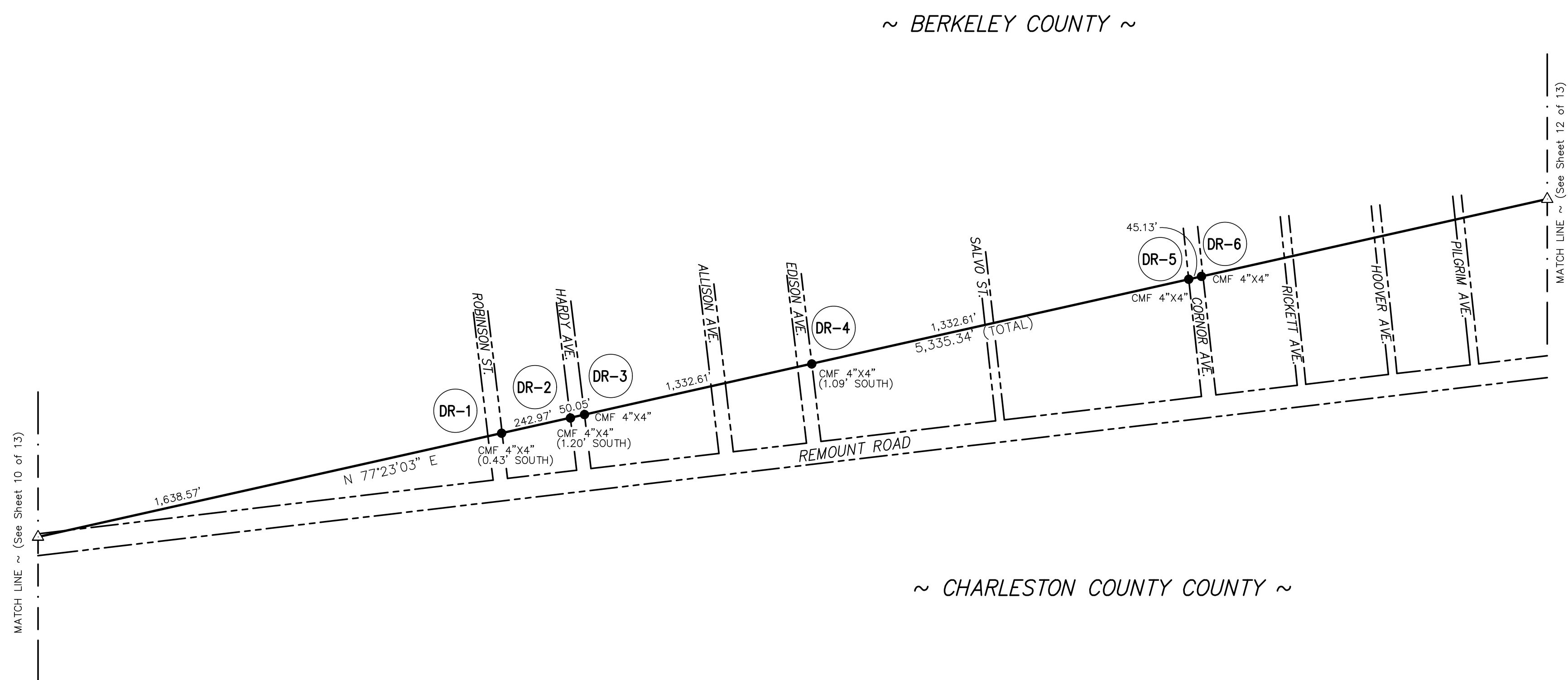
Proj. No.: 17022-001
 Sheet 10 of 13



NOTE:
FOR 'ADDITIONAL NOTES' SEE SHEET 1.

This is not a valid, true copy of this document unless bearing an embossed seal of the surveyor or engineer.
Copyright 2020, CORNERSTONE SURVEYING & ENGINEERING, INC. All rights reserved. Reproduction or use of this document, in whole or in part, without permission is prohibited.
Print No. _____
Date: 7/11/2017

CORNERSTONE
SURVEYING & ENGINEERING, INC.
1240 Bocons Bridge Rd. • Summerville • South Carolina • 29485 • Phone: 843-871-9706



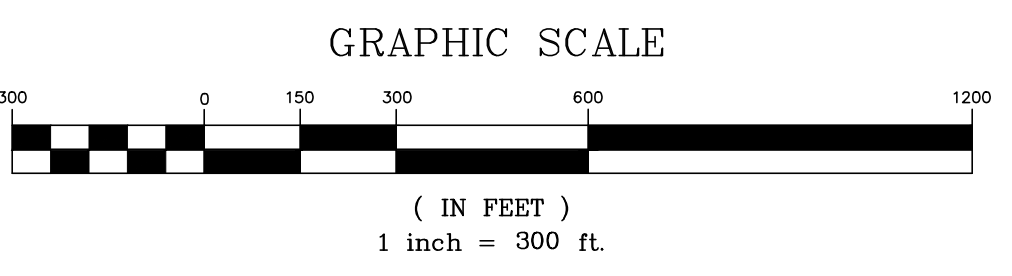
I HEREBY STATE THAT TO THE BEST OF MY PROFESSIONAL KNOWLEDGE, INFORMATION, AND BELIEF, THE SURVEY SHOWN HEREON WAS MADE IN ACCORDANCE WITH THE REQUIREMENTS OF THE 'STANDARDS OF PRACTICE MANUAL FOR SURVEYING IN SOUTH CAROLINA' (EFFECTIVE JUNE 26, 2009), AS PER ARTICLE 4, REGULATION 49-420 F., THAT THIS MAP OR PLAT IS INTENDED ONLY TO SHOW INFORMATION SURVEYED FOR A SPECIFIC STATED PURPOSE; THAT SURVEY LINES SHOWN HEREON ARE BASED ON ACTUAL FIELD SURVEY EVIDENCE AND/OR MEASUREMENTS WHICH MEET OR EXCEED THE REQUIREMENTS FOR A CLASS 'A' SURVEY AS SPECIFIED THEREIN.

NOT VALID UNLESS SIGNED IN RED INK

DAVID BRATTIN
PROFESSIONAL ENGINEER
000037
STATE OF SOUTH CAROLINA

REVIEW ONLY

C.O.A. STAMP EMBOSSED SEAL



A PLAT OF A PORTION OF THE
CHARLESTON-BERKELEY COUNTY LINE
STARTING AT THE 'FINUCAN MONUMENT' AT THE COMMON 'TRI' CORNER OF BERKELEY, CHARLESTON, AND DORCHESTER COUNTIES, EAST, SOUTHEAST OF THE TOWN OF SUMMERVILLE, S.C. LOCATED 1500'± NORTH OF THE INTERSECTION OF E. 5TH N STREET (U.S. HWY. 78) AND FINUCAN ROAD (LOCAL ROAD), THEN SOUTHEASTERLY ALONG THE ORIGINAL CENTERLINE OF THE 'LABSON FARM GROUNDS' TOWARDS THE INTERSECTION WITH THE ORIGINAL CENTERLINE OF ANGRUM ROAD (S-8-1228), THEN RUNNING NORTHEASTERLY THROUGH A SERIES OF CORNERS UNTIL REACHING THE WESTERN R/W OF THE 'SOUTHERN RAIL ROAD', THEN IN A SOUTHERN DIRECTION TO THE INTERSECTION WITH REMOUNT ROAD (S-10-13) THEN EASTERLY DIRECTION TO A POINT AT THE MOUTH OF 'GOOSE CREEK' AND THE 'COOPER RIVER' EAST OF THE CITY OF NORTH CHARLESTON, S.C.

Date of Map:
7/11/2017
 Drawn: AWK
 Design: RDB/AWK
 Checked: KAW/RDB
 Approved: RDB
 CAD File: 17022-001 CHAS-BERK.dwg
 F.B. & Pg. _____
 P.B. & Pg. _____
 Pl. Board Appl. # _____

Date	Revision No.

NOTE:
FOR 'ADDITIONAL NOTES' SEE SHEET 1.

This is not a valid, true copy of this document unless bearing an embossed seal of the surveyor or engineer.
 © Copyright 2020, CORNERSTONE SURVEYING & ENGINEERING, INC. All rights reserved. Reproduction or use of this document, in whole or in part, without permission is prohibited.
 Print No. _____
 Date: ____/____/____

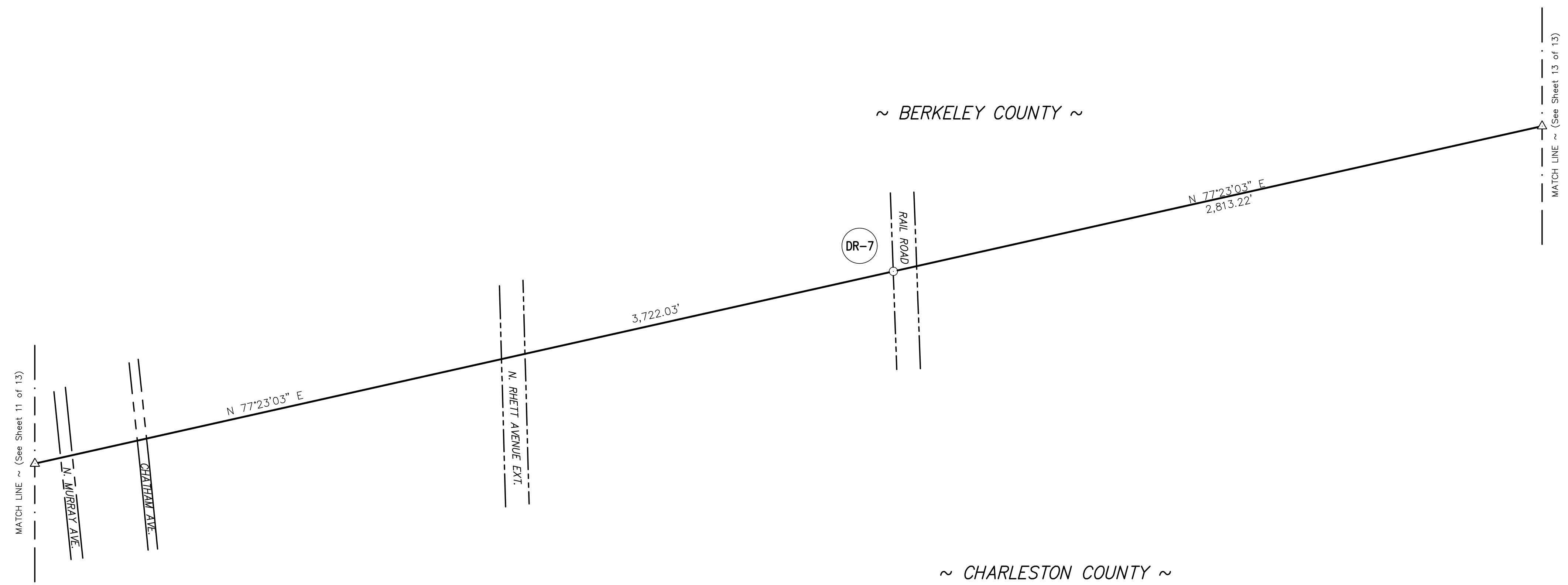
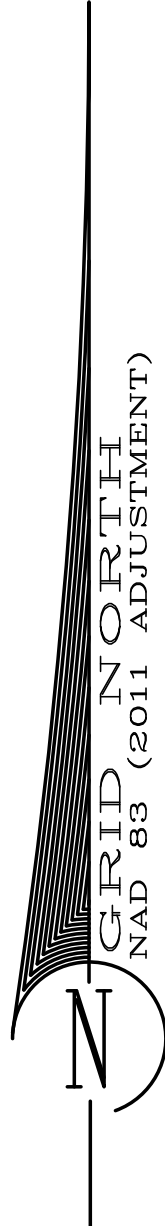
CORNERSTONE
 SURVEYING & ENGINEERING, INC.
 1240 Bocons Bridge Rd. • Summerville • South Carolina • 29485 • Phone: 843-871-9706

A PLAT OF A PORTION OF THE
CHARLESTON-BERKELEY COUNTY LINE
 STARTING AT THE 'FINUCAN MONUMENT' AT THE COMMON 'TRI' CORNER OF BERKELEY, CHARLESTON, AND DORCHESTER COUNTIES, EAST, SOUTHEAST OF THE TOWN OF SUMMERVILLE, S.C. LOCATED 1500± NORTH OF THE INTERSECTION OF E. 5TH N STREET (U.S. HWY. 78) AND FINUCAN ROAD (LOCAL ROAD), THEN SOUTHEASTERLY ALONG THE ORIGINAL CENTERLINE OF ANGRUM ROAD (S-8-1228), THEN RUNNING NORTHEASTERLY WITH THE ORIGINAL CENTERLINE OF ANGRUM ROAD (S-8-1228), THEN RUNNING NORTHEASTERLY THROUGH A SERIES OF CORNERS UNTIL REACHING THE WESTERN R/W OF THE 'SOUTHERN RAIL ROAD', THEN IN A SOUTHERN DIRECTION TO THE INTERSECTION WITH REMOUNT ROAD (S-10-13) THEN EASTERLY DIRECTION TO A POINT AT THE MOUTH OF 'GOOSE CREEK' AND THE 'COOPER RIVER' EAST OF THE CITY OF NORTH CHARLESTON, S.C.

Date of Map:
 7/11/2017
 Drawn: AWK
 Design: RDB/AWK
 Checked: KAW/RDB
 Approved: RDB
 CAD File: 17022-001 CHAS-BERK.dwg
 F.B. & Pg. _____
 P.B. & Pg. _____
 Pl.Board Appl.# _____

Date	Revision No.

Proj. No.: 17022-001
 Sheet 12 of 13



I HEREBY STATE THAT TO THE BEST OF MY PROFESSIONAL KNOWLEDGE, INFORMATION, AND BELIEF, THE SURVEY SHOWN HEREON WAS MADE IN ACCORDANCE WITH THE REQUIREMENTS OF THE 'STANDARDS OF PRACTICE MANUAL FOR SURVEYING IN SOUTH CAROLINA' (EFFECTIVE JUNE 26, 2009), AS PER ARTICLE 4, REGULATION 49-420 F., THAT THIS MAP OR PLAT IS INTENDED ONLY TO SHOW INFORMATION SURVEYED FOR A SPECIFIC STATED PURPOSE; THAT SURVEY LINES SHOWN HEREON ARE BASED ON ACTUAL FIELD SURVEY EVIDENCE, AND/OR MEASUREMENTS WHICH MEET OR EXCEED THE REQUIREMENTS FOR A CLASS 'A' SURVEY AS SPECIFIED THEREIN.

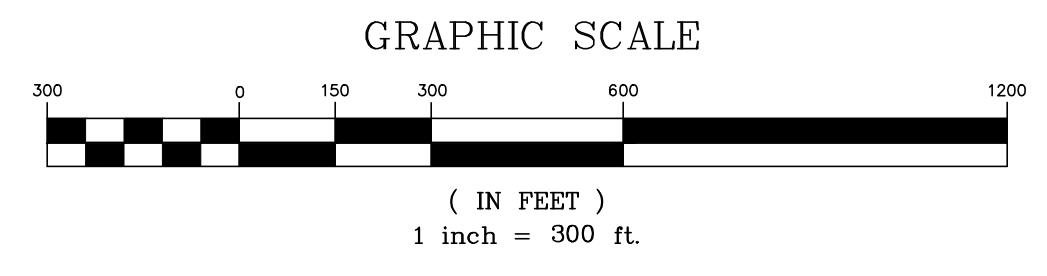
DAVID BRATTO
 PROFESSIONAL ENGINEER
 No. 00037
 STATE OF SOUTH CAROLINA

NOT VALID UNLESS
 SIGNED IN RED INK

REVIEW ONLY

STAMP

EMBOSSED SEAL



NOTE:
FOR 'ADDITIONAL NOTES' SEE SHEET 1.

This is not a valid, true copy of the document unless bearing an embossed seal of the surveyor or engineer.
 Copyright 2020, CORNERSTONE SURVEYING & ENGINEERING, INC. All rights reserved. Reproduction or use of this document, in whole or in part, without permission is prohibited.
 Print No. _____
 Date: ____/____/____

CORNERSTONE
 SURVEYING & ENGINEERING, INC.
 1240 Bacons Bridge Rd. • Summerville • South Carolina • 29485 • Phone: 843-871-9706

A PLAT OF A PORTION OF THE
CHARLESTON-BERKELEY COUNTY LINE
 STARTING AT THE 'FINUCAN MONUMENT' AT THE COMMON 'TRI' CORNER OF BERKELEY, CHARLESTON, AND DORCHESTER COUNTIES, EAST, SOUTHEAST OF THE TOWN OF SUMMERVILLE, S.C. LOCATED 1500'± NORTH OF THE INTERSECTION OF E. 5TH N STREET (U.S. HWY. 78) AND FINUCAN ROAD (LOCAL ROAD), THEN SOUTHEASTERLY ALONG THE ORIGINAL CENTERLINE OF LADSON FARM GROUNDS TOWARDS THE INTERSECTION WITH THE ORIGINAL CENTERLINE OF ANGRUM ROAD (S-8-1228), THEN RUNNING NORTHEASTERLY THROUGH A SERIES OF CORNERS UNTIL REACHING THE WESTERN R/W OF THE 'SOUTHERN RAIL ROAD', THEN IN A SOUTHERN DIRECTION TO THE INTERSECTION WITH REMOUNT ROAD (S-10-13) THEN EASTERLY DIRECTION TO A POINT AT THE MOUTH OF 'GOOSE CREEK' AND THE 'COOPER RIVER' EAST OF THE CITY OF NORTH CHARLESTON, S.C.

Date of Map:
 7/11/2017
 Drawn: AWK
 Design: RDB/AWK
 Checked: KAW/RDB
 Approved: RDB
 CAD File: 17022-001 CHAS-BERK.dwg
 F.B. & Pg. _____
 P.B. & Pg. _____
 Pl. Board Appl. # _____

Date	Revision No.

Proj. No.: 17022-001
 Sheet 13 of 13

GRID NORTH
 NAD 83 (2011 ADJUSTMENT)

MATCH LINE ~ (See Sheet 12 of 13)

~ BERKELEY COUNTY ~

~ CHARLESTON COUNTY ~

~ BERKELEY COUNTY ~

~ GOOSE CREEK ~

~ COOPER RIVER ~

COUNTY LINE MONUMENT
 SET (#8 RBR W/ ALUM CAP)
 N: 393,595.67
 E: 2,321,616.40
 SCSPC NAD 83 (2011 Adj.)

N 77°23'03" E
 6,130.16'

N 77°23'03" E
 361.71'

DR-8

DS

I HEREBY STATE THAT TO THE BEST OF MY PROFESSIONAL KNOWLEDGE, INFORMATION, AND BELIEF, THE SURVEY SHOWN HEREON WAS MADE IN ACCORDANCE WITH THE REQUIREMENTS OF THE 'STANDARDS OF PRACTICE MANUAL FOR SURVEYING IN SOUTH CAROLINA' (EFFECTIVE JUNE 26, 2009), AS PER ARTICLE 4, REGULATION 49-420 F., THAT THIS MAP OR PLAT IS INTENDED ONLY TO SHOW INFORMATION SURVEYED FOR A SPECIFIC STATED PURPOSE; THAT SURVEY LINES SHOWN HEREON ARE BASED ON ACTUAL FIELD SURVEY EVIDENCE, AND/OR MEASUREMENTS WHICH MEET OR EXCEED THE REQUIREMENTS FOR A CLASS 'A' SURVEY AS SPECIFIED THEREIN.

NOT VALID UNLESS SIGNED IN RED INK

REVIEW ONLY

C.O.A. STAMP EMBOSSED SEAL

