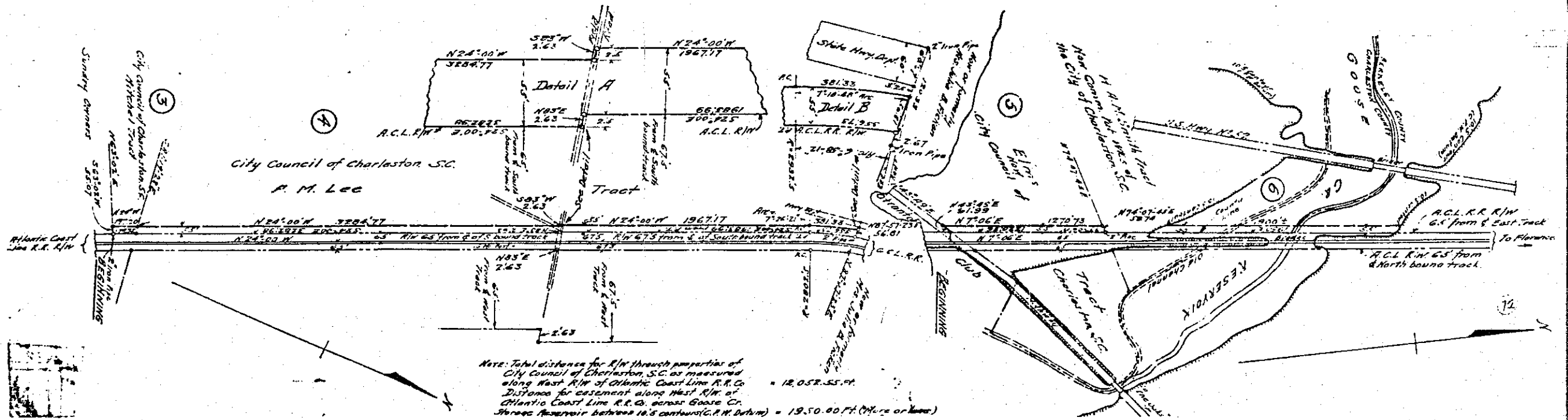
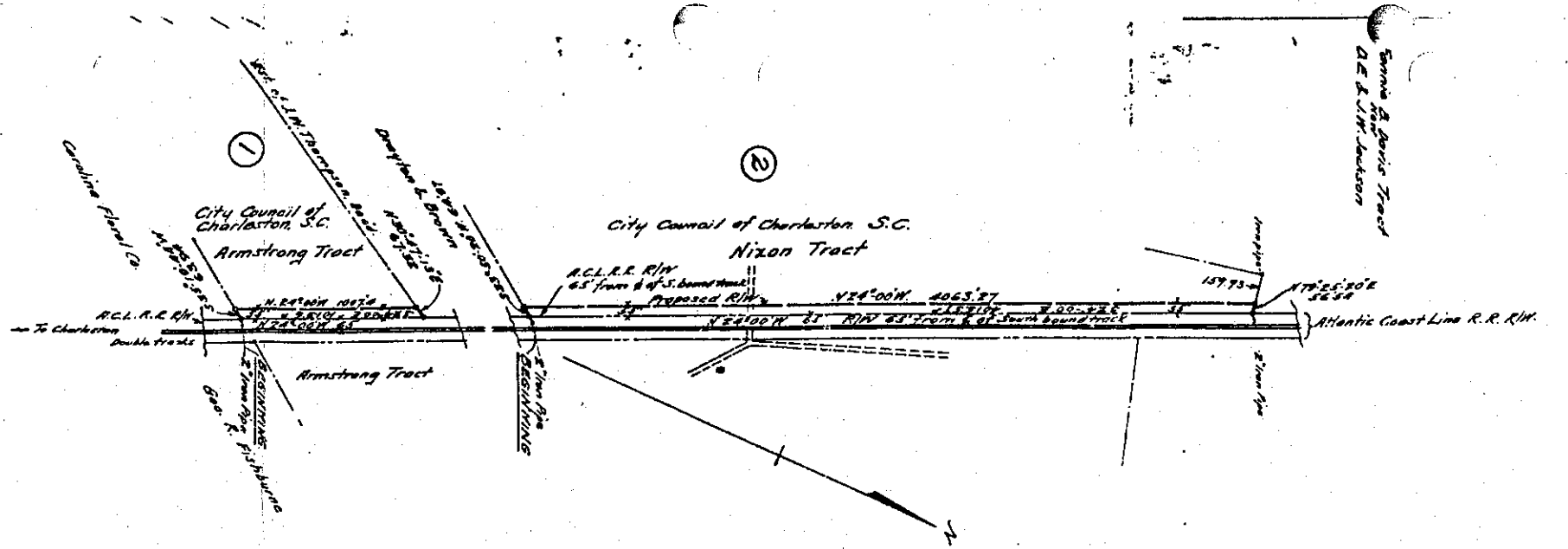


COMMISSIONERS OF PUBLIC WORKS,
CITY OF CHARLESTON, S. C.

**RIGHTS OF WAY GRANTED
SOUTHERN BELL TELEPHONE
AND TELEGRAPH CO., INC. BY
CITY COUNCIL OF CHARLES-
TON, S. C.**

SCALE: 1" = 400' JULY 1940.
SERIAL NO 1438 DRAWING NO



Note: Total distance for R/W through properties of City Council of Charleston, S.C. as measured along West R/W of Atlantic Coast Line R.R. Co. = 12,052.55 ft.
Distance for easement along West R/W of Atlantic Coast Line R.R. Co. across Goose Cr. Reservoir between 10.5 contours (C.M. Datum) = 19,500.00 ft. (More or Less)

attached to M41.2-11