

LINE TABLE with columns: LINE, BEARING, LENGTH, LINE, BEARING, LENGTH, LINE, BEARING, LENGTH. Contains 168 rows of survey data.

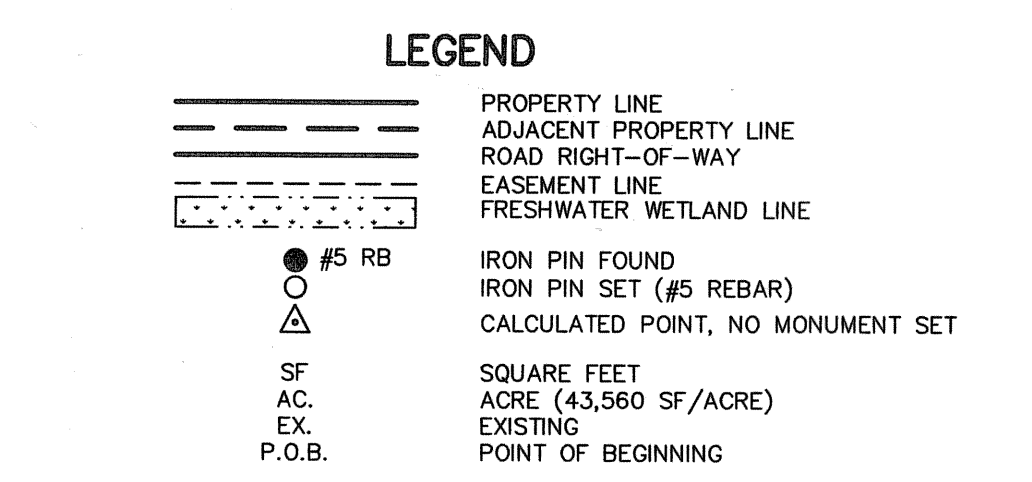
LINE TABLE with columns: LINE, BEARINGS, DISTANCE, LINE, BEARINGS, DISTANCE, LINE, BEARINGS, DISTANCE. Contains 300 rows of survey data.

- SURVEY NOTES: 1. THIS PROPERTY IS LOCATED IN FLOOD ZONE "X" WITH NO BASE FLOOD ELEVATION SPECIFIED... 2. THE BEARINGS SHOWN HEREON ARE MAGNETIC AND AS SUCH ARE SUBJECT TO LOCAL ATTRACTION...

Doc# 000087441
PLAT GABINET P PAGE 322-B
Filed and Recorded
12/05/2002 09:11:19AM
Canthia B. Forte
Register of Deeds Berkeley Co. SC

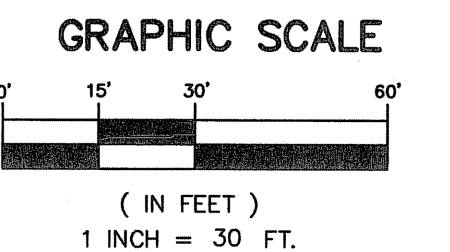
NOTE: ALL AREAS EXCLUSIVE OF RIGHT-OF-WAY AND LOTS ARE CONSIDERED COMMON AREAS.
NOTE: HOMEOWNERS ASSOCIATION SHALL BE RESPONSIBLE FOR MAINTENANCE OF ALL STORMWATER DRAINAGE FACILITIES...

- REFERENCES: 1. FINAL SUBDIVISION PLAT PHASE 1A/1B SUMMER WOOD SUBDIVISION, PREPARED FOR PORTRAIT HOMES BY GENERAL ENGINEERING LABORATORIES, INC. DATED 8-16-02 AND REVISED 9-17-02...



CURVE TABLE with columns: CURVE, RADIUS, DELTA, LENGTH, CHORD BRG, CHORD, TANGENT. Contains 23 rows of curve data.

REVISIONS table with columns: NO., DATE, ISSUED BY, APPR'D BY, DESCRIPTION. Contains 2 rows of revision data.



BY THE RECORDING OF THE PLAT, I HEREBY DEDICATE THE 50' PRIVATE RIGHT-OF-WAY SHOWN HEREON TO ALL PURCHASERS AND SUCCESSORS IN INTEREST OF THIS PROPERTY...

Signature of Frank D. Baker, dated 12-4-02. Includes title: FRANK D. BAKER, P.L.S., S.C. REG. # 16807.

County Planning Commission Final Plat Approved. Signature of Molly A. Baker, dated 12-4-02.

I HEREBY STATE TO THE BEST OF MY KNOWLEDGE, INFORMATION AND BELIEF THE SURVEY SHOWN HEREON WAS MADE IN ACCORDANCE WITH THE REQUIREMENTS OF THE MINIMUM STANDARDS MANUAL FOR THE PRACTICE OF LAND SURVEYING IN SOUTH CAROLINA...

Signature of Frank D. Baker, dated 12-4-02. Includes title: FRANK D. BAKER, P.L.S., S.C. REG. # 16807.

GENERAL ENGINEERING logo and contact information: P.O. BOX 30712, CHARLESTON, SC 29417, 2040 SAVAGE ROAD, 29407, (843) 769-7378, FAX (843) 769-7397.

FINAL SUBDIVISION PLAT EXHIBIT "A" PHASES 1A AND 1B SUMMER WOOD SUBDIVISION. OWNED BY PORTRAIT HOMES OF SOUTH CAROLINA, LLC. LOCATED IN BERKELEY COUNTY, SOUTH CAROLINA.

Professional Engineer Seal for Frank D. Baker, No. 16807, State of South Carolina.

Project information: DATE SURVEYED 10/01/2002, LAST REVISED, DRAWN/CHECKED DAR/FDB, APPROVED FDB, PROJECT NUMBER PRTR00602C, SHEET NUMBER S-2 OF 2.