

### INDEX OF SHEETS

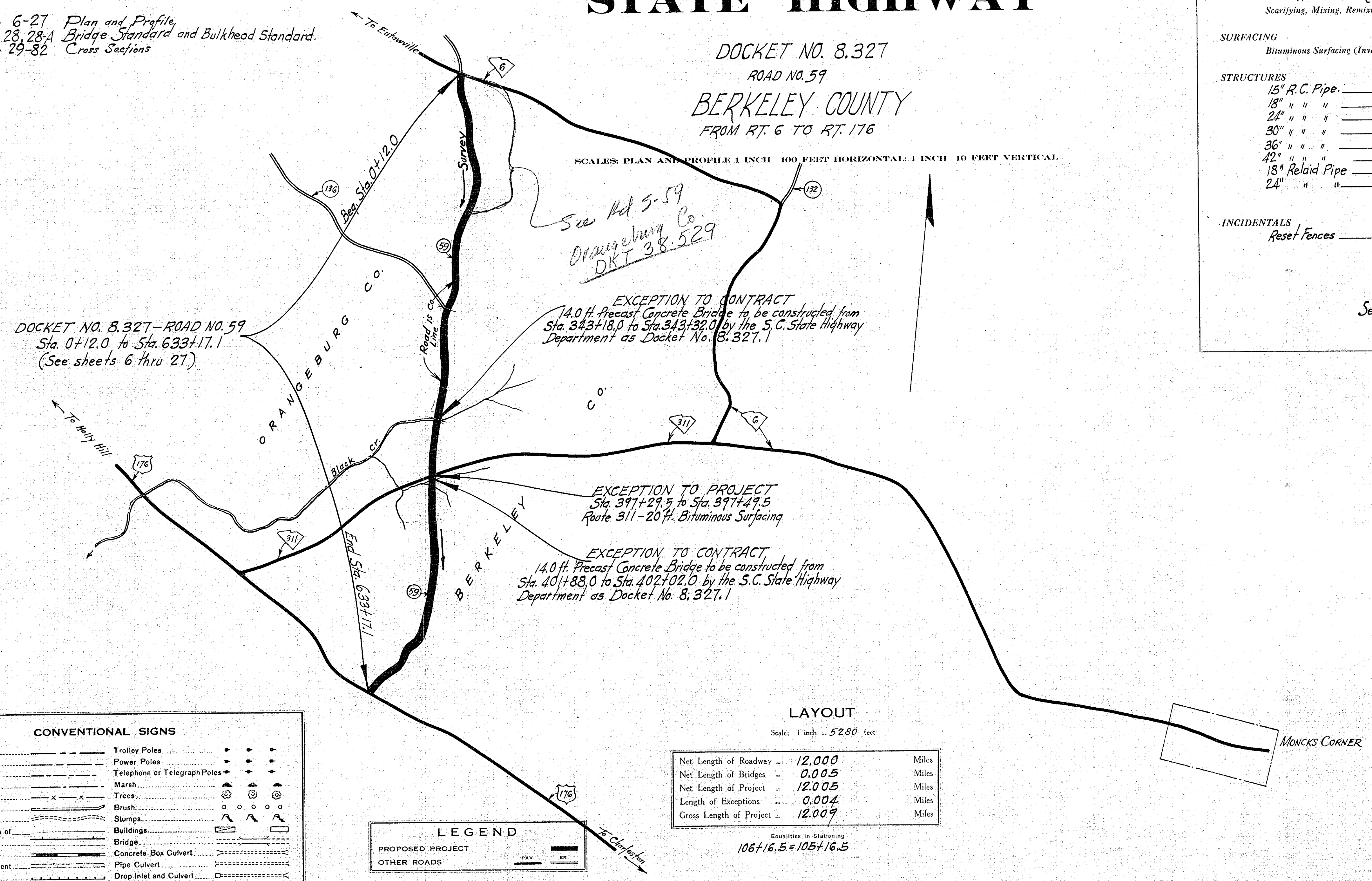
- Sheet No. 1 Title Sheet
- " " 1-A Moving Items
- " 2 Typical Sections of Improvement
- " 3 Intersections Std.
- " 4 Super-elevation "
- " 5 Traffic Control Devices
- " 6-27 Plan and Profile
- " 28, 28-A Bridge Standard and Bulkhead Standard.
- " 29-82 Cross Sections

## SOUTH CAROLINA STATE HIGHWAY DEPARTMENT COLUMBIA

# PLAN AND PROFILE OF PROPOSED STATE HIGHWAY

DOCKET NO. 8.327  
ROAD NO. 59  
**BERKELEY COUNTY**  
FROM RT. 6 TO RT. 176

SCALE: PLAN AND PROFILE 1 INCH = 100 FEET HORIZONTAL; 1 INCH = 10 FEET VERTICAL.



### SUMMARY OF ESTIMATED QUANTITIES

<b>EARTHWORK</b>			
Clearing and Grubbing within Roadway	_____	Necy.	L.S.
Clearing and Grubbing of Borrow and Material Pits	_____	4.0	Acres.
Common Excavation	_____	55,979	C.Y.
Overhaul	_____	474,082	C.Y.H.M.
Selected Material for Shoulders	_____	8,119	C.Y.
<b>BASE COURSE</b>			
Earth Type Base Course (Pit Material)	_____	31,498	C.Y.
Scarifying, Mixing, Remixing, Shaping and Reshaping	_____	151,433	M.S.Y.
<b>SURFACING</b>			
Bituminous Surfacing (Inverted Penetration with Seal)	_____	144,393	S.Y.
<b>STRUCTURES</b>			
15" R.C. Pipe	_____	764	L.F.
18" " " "	_____	1032	"
24" " " "	_____	340	"
30" " " "	_____	40	"
36" " " "	_____	52	"
42" " " "	_____	88	"
18" Relaid Pipe	_____	332	"
24" " " "	_____	24	"
<b>INCIDENTALS</b>			
Reset Fences	_____	22,000	L.F.

See sheet no. 1-A for Moving Items.

#### CONVENTIONAL SIGNS

State Line	Trolley Poles	▲	▲	▲
County Line	Power Poles	—	—	—
City or Town Limits	Telephone or Telegraph Poles	—	—	—
Property Line	Marsh	—	—	—
Fence	Trees	—	—	—
Retaining Wall	Brush	—	—	—
Existing Road	Stumps	—	—	—
© and R.O.W. Lines of	Buildings	—	—	—
Proposed Road	Bridge	—	—	—
Railroad	Concrete Box Culvert	—	—	—
Levee or Embankment	Pipe Culvert	—	—	—
Guard Rail	Drop Inlet and Culvert	—	—	—
Point of Intersection (P. I.)	Hub on Center Line	—	—	—

#### LEGEND

PROPOSED PROJECT	PAV.	ER.
OTHER ROADS		

#### LAYOUT

Scale: 1 inch = 5280 feet

Net Length of Roadway	12.000	Miles
Net Length of Bridges	0.005	Miles
Net Length of Project	12.005	Miles
Length of Exceptions	0.004	Miles
Gross Length of Project	12.009	Miles

Equalities in Stationing  
106+16.5 = 105+16.5

Note: All workmanship and material on this project to conform with South Carolina State Highway Department Standard Specifications for Highway Construction dated March 15th 1939, as approved by the Administrator, Federal Works Agency.

APPROVED:  
*S. T. Pearson* 12-7-58  
STATE HIGHWAY ENGINEER DATE

DEPARTMENT OF COMMERCE  
BUREAU OF PUBLIC ROADS

RECOMMENDED FOR APPROVAL:

DISTRICT ENGINEER DATE

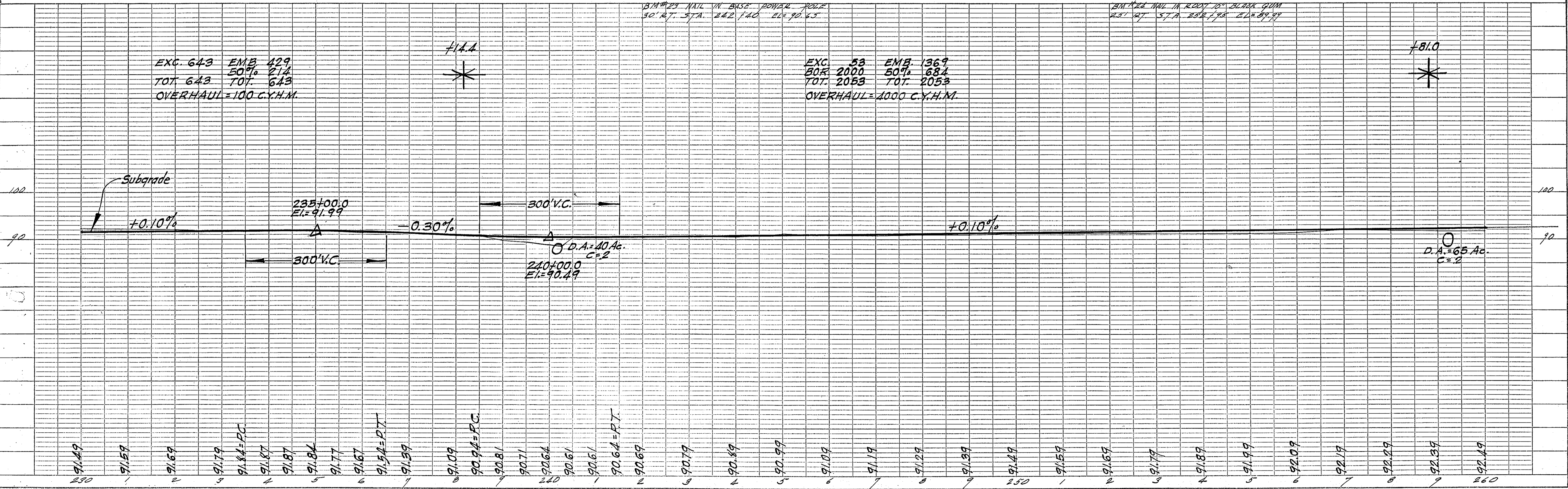
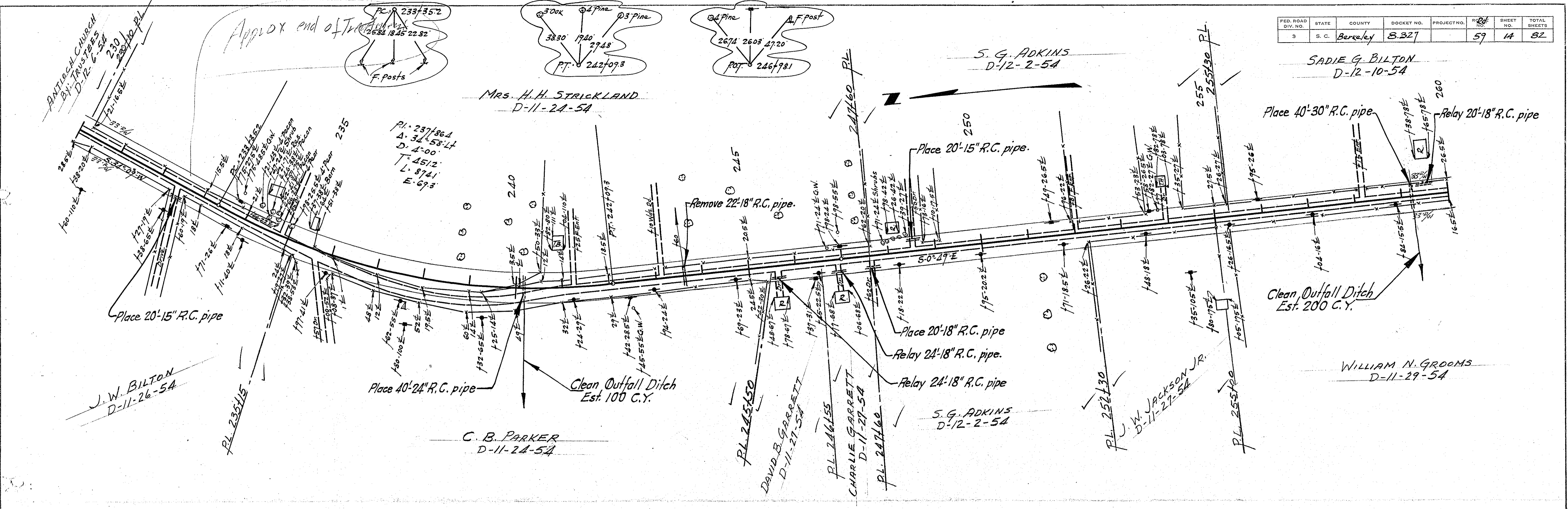
APPROVED:

DIVISION ENGINEER DATE

FED. ROAD DIV. NO.	STATE	COUNTY	DOCKET NO.	PROJECT NO.	SHEET NO.	TOTAL SHEETS
9	S. C.	Berkeley	8.327		59	82

PLAN	DATE	BY
SURVEYED PLOTTED NOTE BOOK ALIGNMENT CHECKED RT. OF WAY CHECKED		

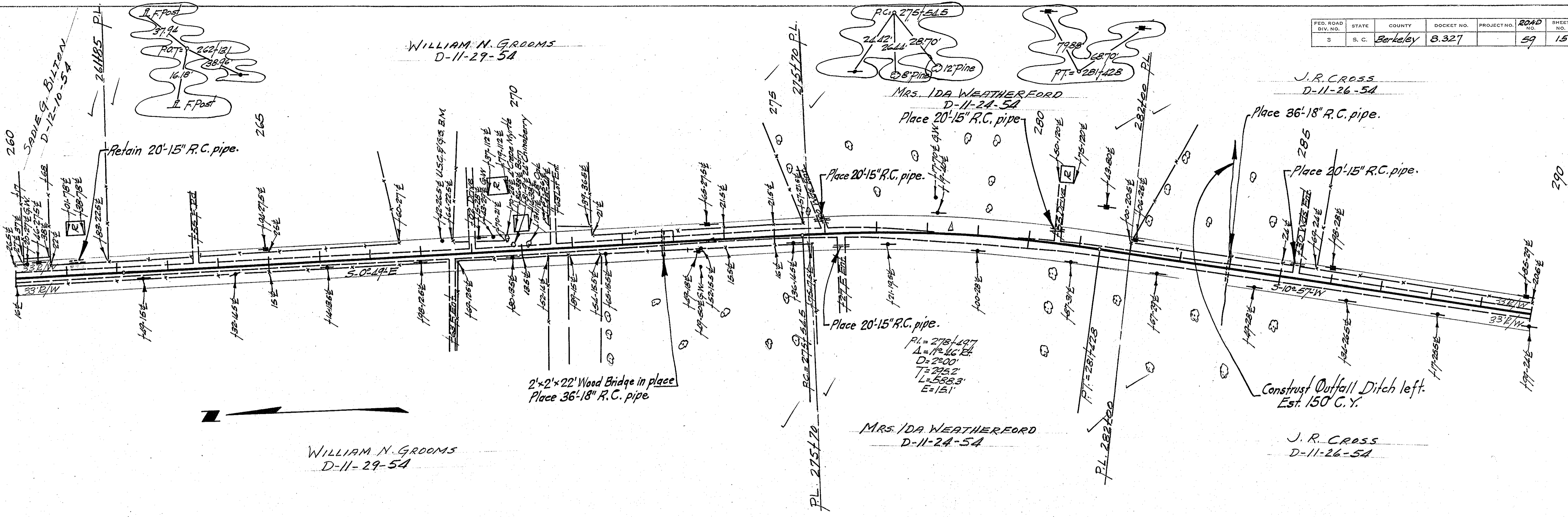
PROFILE	DATE	BY
SURVEYED PLOTTED NOTE BOOK GRADES CHECKED STRUCTURE NOTATIONS CHECKED		



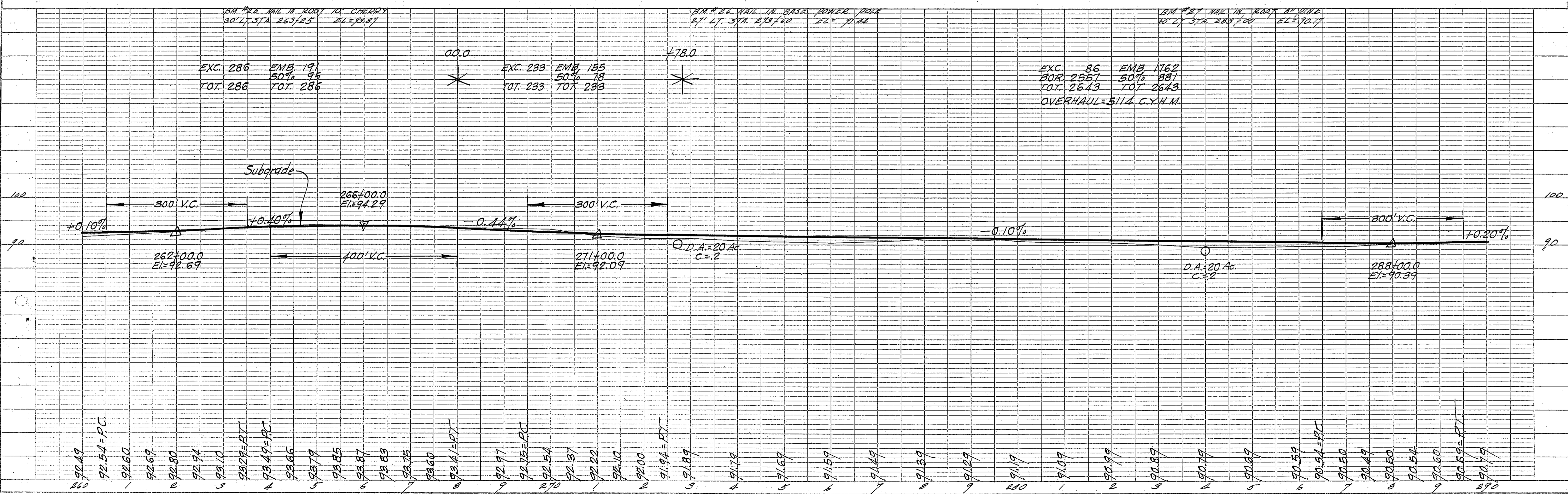
Berkeley Ca  
B. 59

FED. ROAD DIV. NO.	STATE	COUNTY	DOCKET NO.	PROJECT NO.	ROAD NO.	SHEET NO.	TOTAL SHEETS
3	S. C.	Berkeley	8.327		59	15	82

PLAN  
 SURVEYED BY DATE  
 NOTE BOOK NO. GRADES CHECKED RT. OF WAY CHECKED  
 NO. STRUCTURE NOTATIONS C-7-10



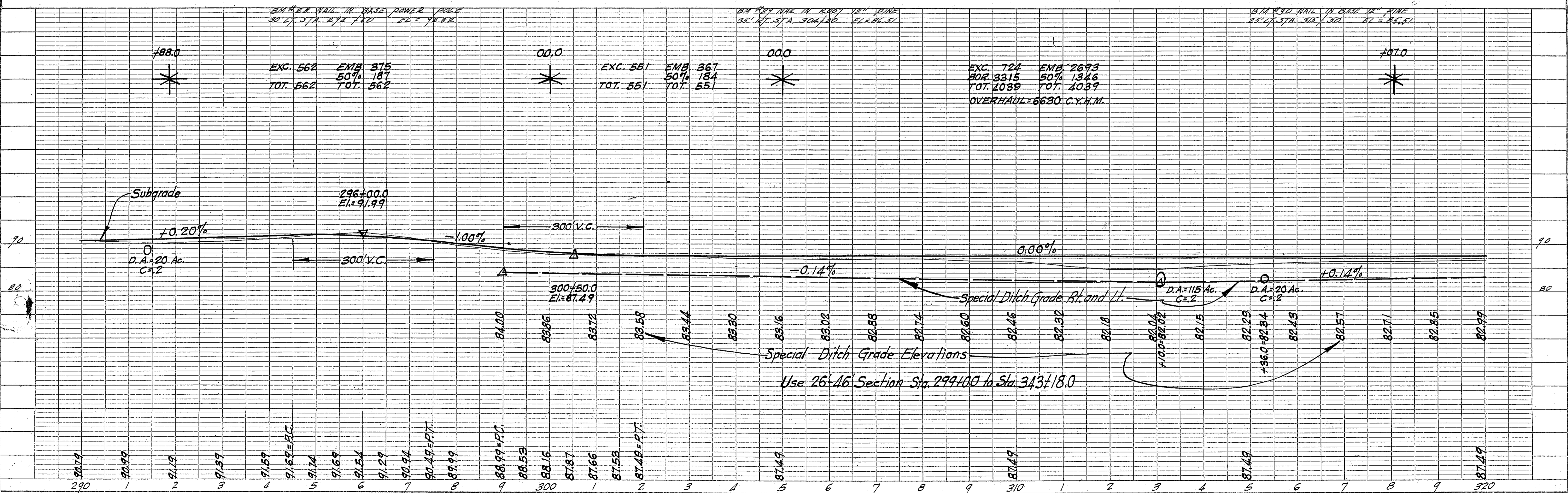
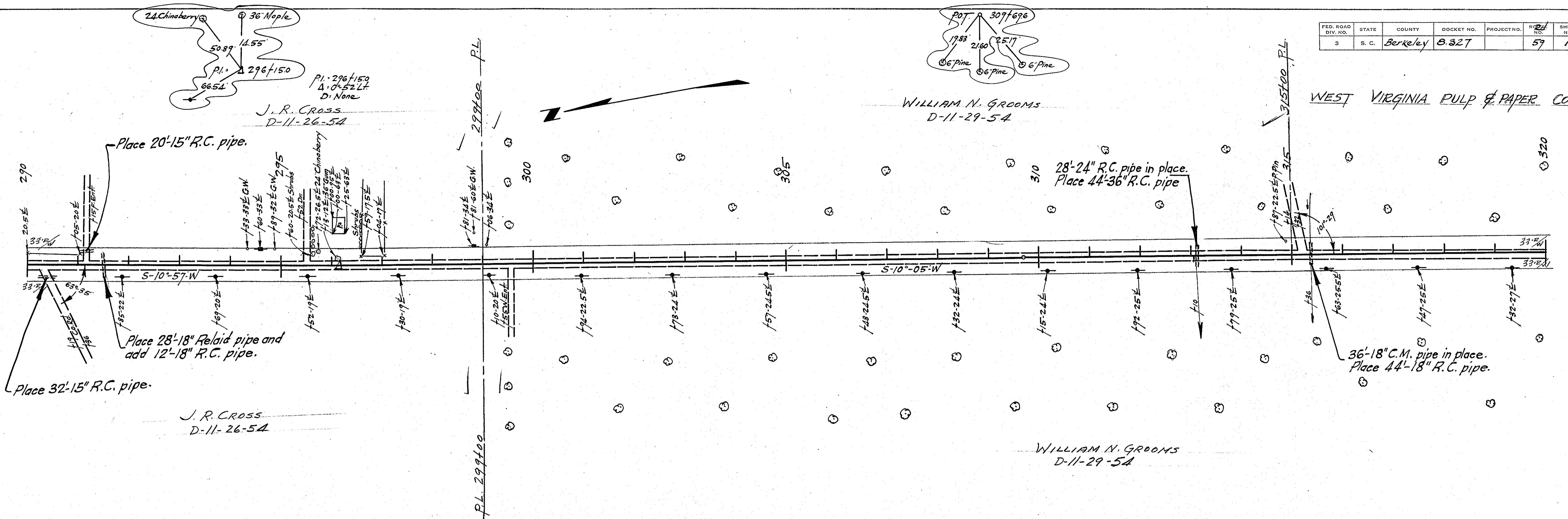
PROFILE  
 SURVEYED BY DATE  
 NOTE BOOK NO. GRADES CHECKED  
 NO. STRUCTURE NOTATIONS C-7-10



FED. ROAD DIV. NO.	STATE	COUNTY	DOCKET NO.	PROJECT NO.	SHEET NO.	TOTAL SHEETS
3	S. C.	Berkeley	8.327		57	16

PLAN	DATE
SURVEYED BY	
NOTE BOOK ALIGNED CHECKED	
RT. OF WAY CHECKED	
NO.	

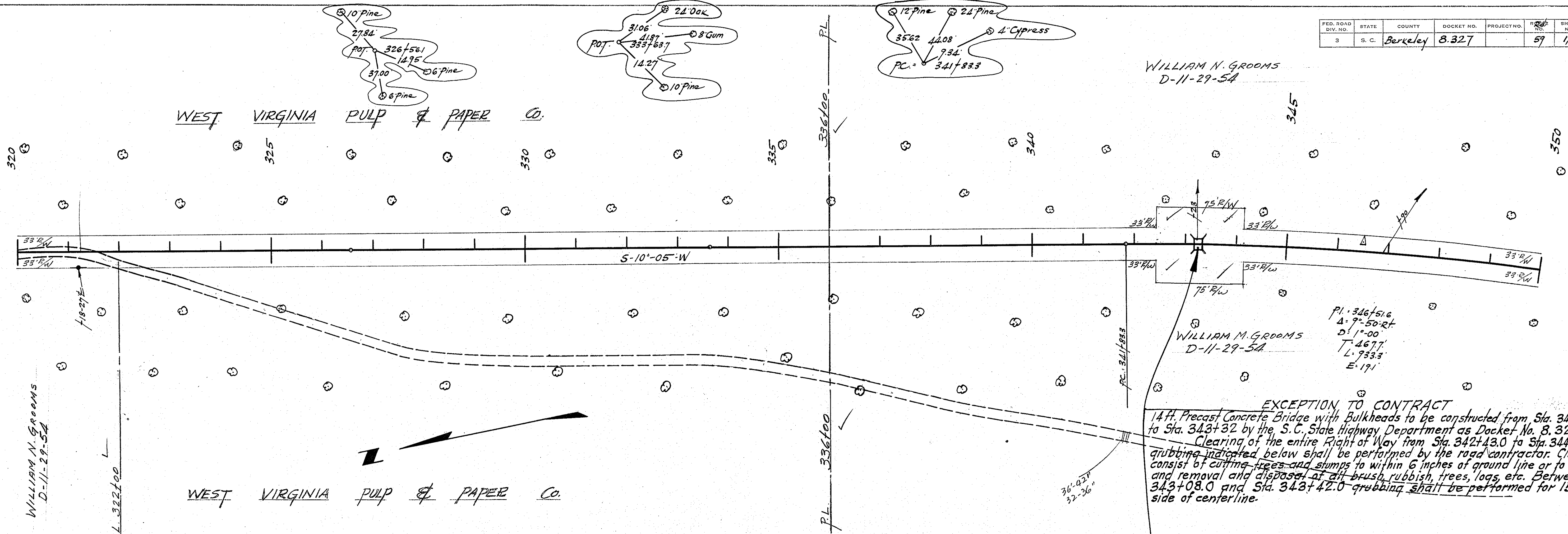
PROFILE	DATE
SURVEYED BY	
GRADES CHECKED	
NOTE BOOK	
NO.	



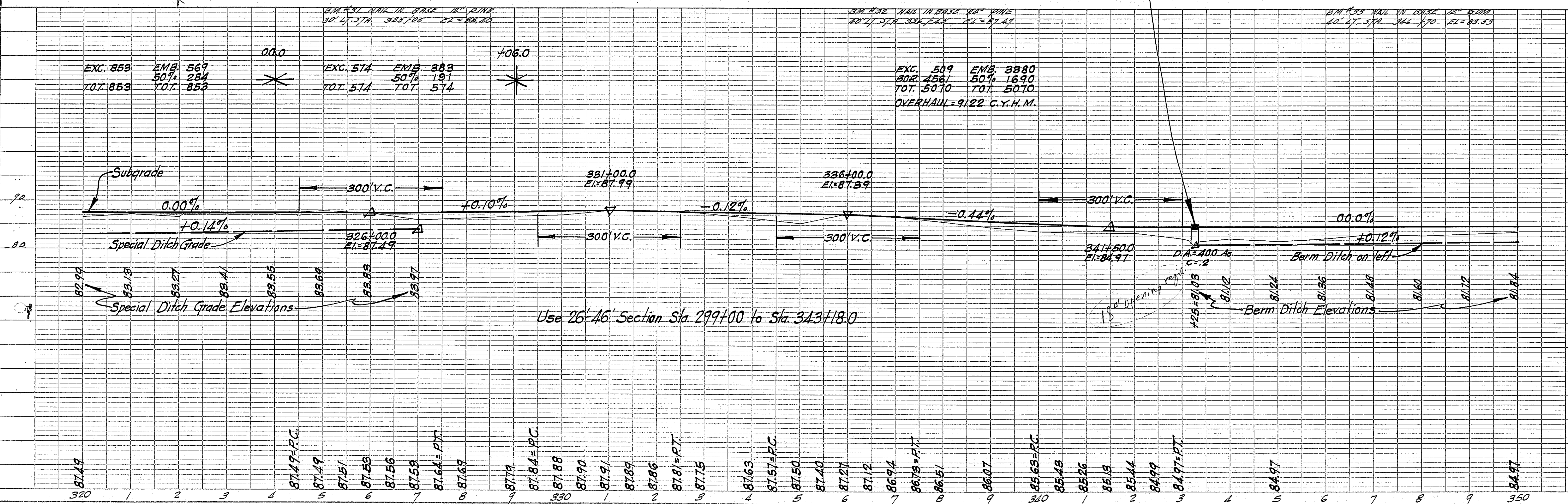
FED. ROAD DIV. NO.	STATE	COUNTY	DOCKET NO.	PROJECT NO.	SHEET NO.	TOTAL SHEETS
3	S. C.	Berkeley	8.327		59	82

DATE: \_\_\_\_\_ BY: \_\_\_\_\_  
 SURVEYED, PLOTTED, AND CHECKED BY: \_\_\_\_\_  
 NOTE BOOK NO. \_\_\_\_\_  
 PLAN NO. \_\_\_\_\_

DATE: \_\_\_\_\_ BY: \_\_\_\_\_  
 SURVEYED, PLOTTED, AND CHECKED BY: \_\_\_\_\_  
 NOTE BOOK NO. \_\_\_\_\_  
 PROFILE NO. \_\_\_\_\_



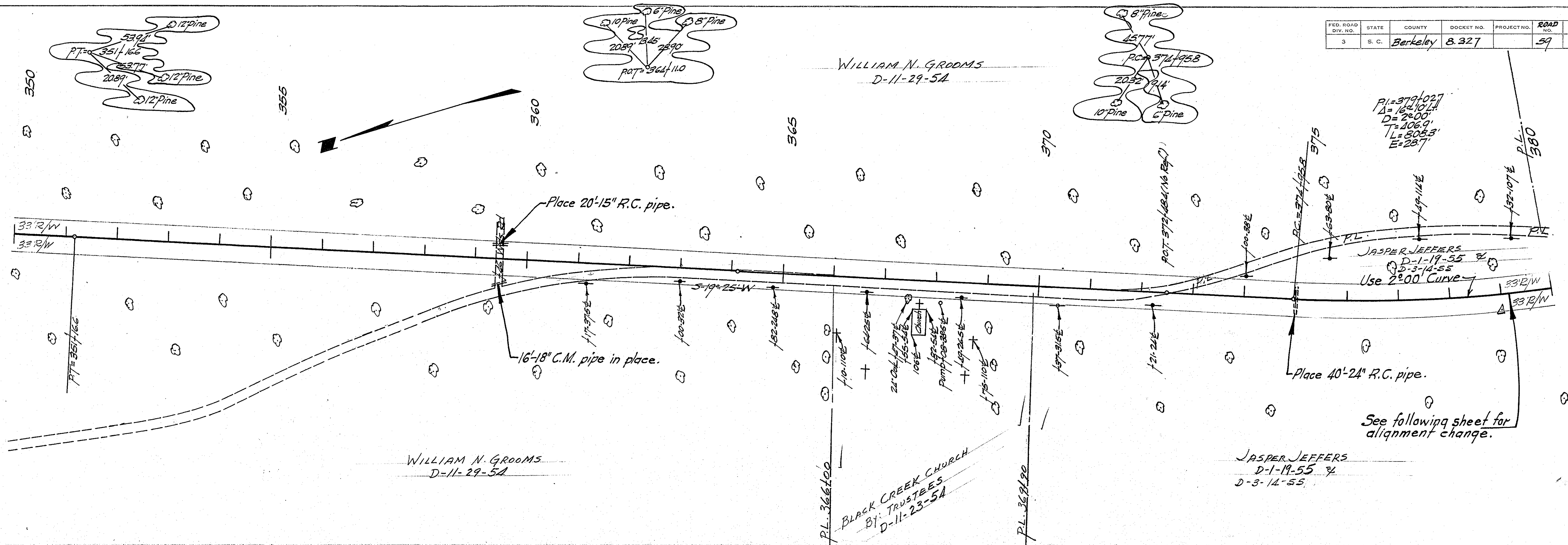
**EXCEPTION TO CONTRACT**  
 14 ft. Precast Concrete Bridge with Bulkheads to be constructed from Sta. 343+18.0 to Sta. 343+32 by the S. C. State Highway Department as Docket No. 8.327.1.  
 Clearing of the entire Right of Way from Sta. 342+43.0 to Sta. 344+07.0 and grubbing indicated below shall be performed by the road contractor. Clearing shall consist of cutting trees and stumps to within 6 inches of ground line or to low water and removal and disposal of all brush, rubbish, trees, logs, etc. Between Sta. 343+08.0 and Sta. 343+42.0 grubbing shall be performed for 15 ft. each side of centerline.



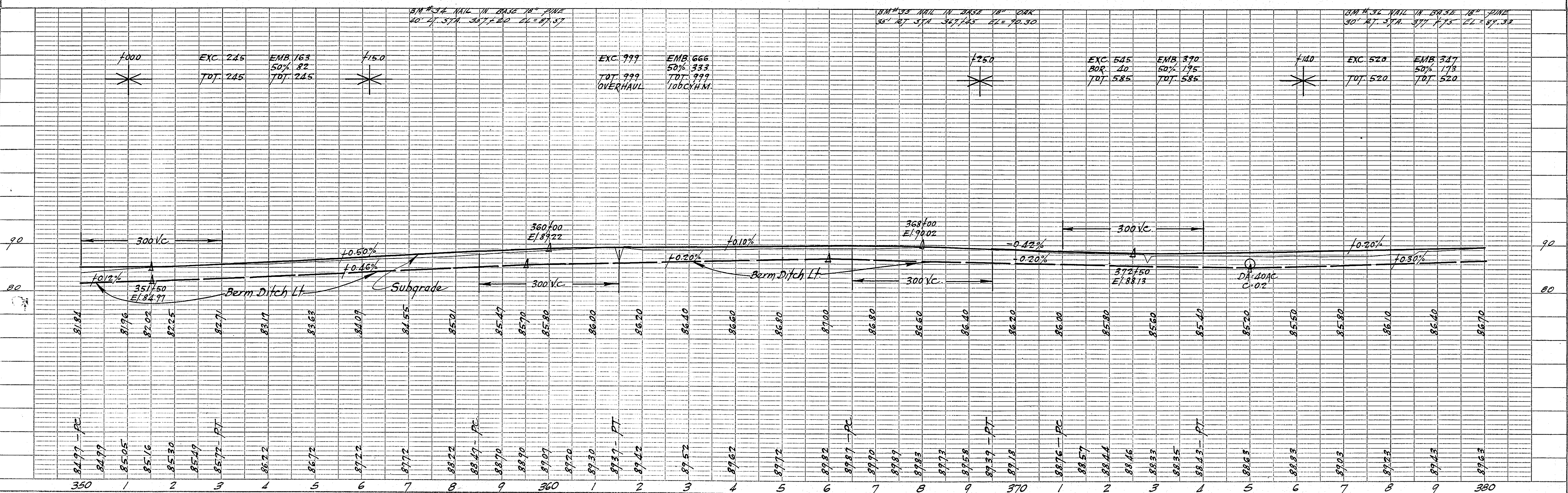
Use 26'-46" Section Sta. 299+00 to Sta. 343+18.0

FED. ROAD DIV. NO.	STATE	COUNTY	DOCKET NO.	PROJECT NO.	ROAD NO.	SHEET NO.	TOTAL SHEETS
3	S. C.	Berkeley	8.327		59	10	82

PLAN  
 SURVEYED, PLOTTED, GRADES CHECKED, RT. OF WAY CHECKED.  
 NOTE BOOK ALIGNMENT CHECKED.  
 NO. \_\_\_\_\_ DATE \_\_\_\_\_  
 BY \_\_\_\_\_



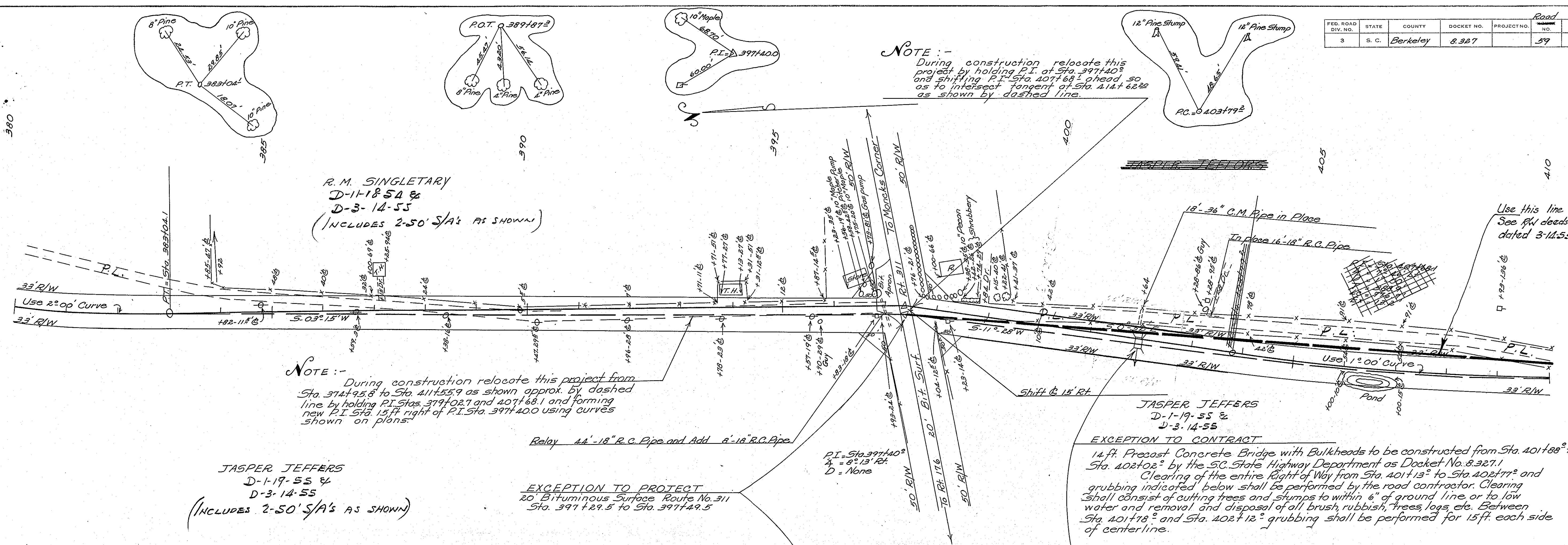
PROFILE  
 SURVEYED, PLOTTED, GRADES CHECKED, RT. OF WAY CHECKED.  
 NOTE BOOK GRADES CHECKED.  
 NO. \_\_\_\_\_ DATE \_\_\_\_\_  
 BY \_\_\_\_\_



FED. ROAD DIV. NO.	STATE	COUNTY	DOCKET NO.	PROJECT NO.	SHEET NO.	TOTAL SHEETS
3	S. C.	Berkeley	8.327		59	62

DATE \_\_\_\_\_ BY \_\_\_\_\_  
 SURVEYED \_\_\_\_\_  
 PLAN NOTE BOOK \_\_\_\_\_  
 ALIGNMENT CHECKED \_\_\_\_\_  
 RT. OF WAY CHECKED \_\_\_\_\_  
 NO. \_\_\_\_\_

DATE \_\_\_\_\_ BY \_\_\_\_\_  
 SURVEYED \_\_\_\_\_  
 PROFILE PLOTTED \_\_\_\_\_  
 GRADES CHECKED \_\_\_\_\_  
 E. M. NOTED \_\_\_\_\_  
 STRUCTURE STATISTICS CHECKED \_\_\_\_\_  
 NO. \_\_\_\_\_



**NOTE :-**  
 During construction relocate this project from Sta. 374+95.8 to Sta. 411+55.9 as shown approx. by dashed line by holding P.I. Stas. 379+02.7 and 407+68.1 and forming new P.I. Sta. 15 ft. right of P.I. Sta. 397+400 using curves shown on plans.

**NOTE :-**  
 During construction relocate this project by holding P.I. at Sta. 397+400 and shifting P.I. Sta. 407+68.1 ahead 50' as to intersect tangent of Sta. 414+62.2 as shown by dashed line.

**JASPER JEFFERS**  
 D-1-19-55 &  
 D-3-14-55  
 (INCLUDES 2-50' S/A'S AS SHOWN)

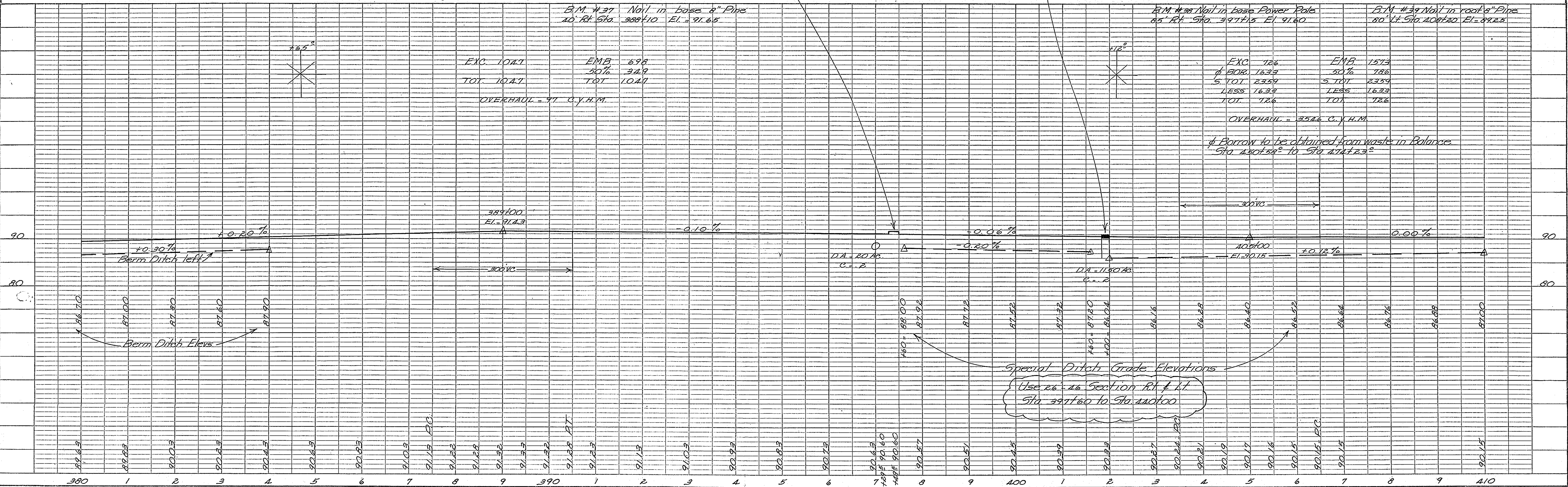
**R.M. SINGLETARY**  
 D-1-18-54 &  
 D-3-14-55  
 (INCLUDES 2-50' S/A'S AS SHOWN)

Relay 44'-18" R.C. Pipe and Add 8'-18" R.C. Pipe

**EXCEPTION TO PROJECT**  
 20' Bituminous Surface Route No. 311  
 Sta. 397+29.5 to Sta. 397+49.5

**JASPER JEFFERS**  
 D-1-19-55 &  
 D-3-14-55  
**EXCEPTION TO CONTRACT**

14 ft. Precast Concrete Bridge with Bulkheads to be constructed from Sta. 401+88 to Sta. 402+02 by the S.C. State Highway Department as Docket No. 8.327.1. Clearing of the entire Right of Way from Sta. 401+13 to Sta. 402+77 and grubbing indicated below shall be performed by the road contractor. Clearing shall consist of cutting trees and stumps to within 6" of ground line or to low water and removal and disposal of all brush, rubbish, trees logs, etc. Between Sta. 401+78 and Sta. 402+12 grubbing shall be performed for 15 ft. each side of centerline.



Exc.	104.7	EMB	698
		50%	349
TOT.	104.7	TOT.	1041

OVERHAUL = 91 C.Y.H.M.

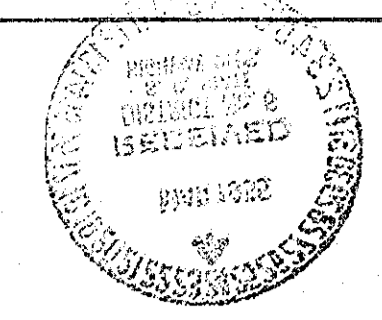
Exc.	126	EMB	1513
# BOR.	1633	50%	786
S. TOT.	2359	S. TOT.	2359
LESS	1633	LESS	1633
TOT.	126	TOT.	126

OVERHAUL = 3546 C.Y.H.M.

Special Ditch Grade Elevations  
 Use 26" x 26" Section Rt. & Lt.  
 Sta. 397+60 to Sta. 400+00

FED. ROAD DIV. NO.	STATE	COUNTY	DOCKET NO.	PROJECT NO.	ROAD NO.	SHEET NO.	TOTAL SHEETS
3	S. C.	Berkeley	8.327			59	82

HADRICK HUSSER  
D-11-27-54



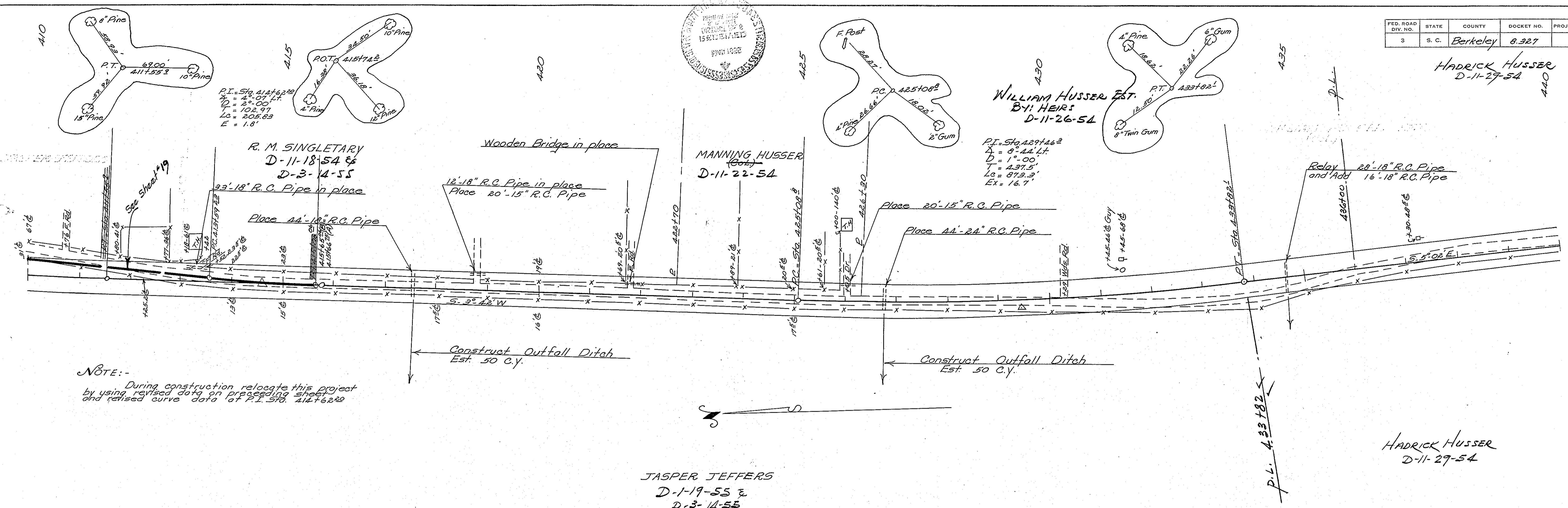
WILLIAM HUSSER EST.  
BY: HEIRS  
D-11-26-54

HADRICK HUSSER  
D-11-29-54

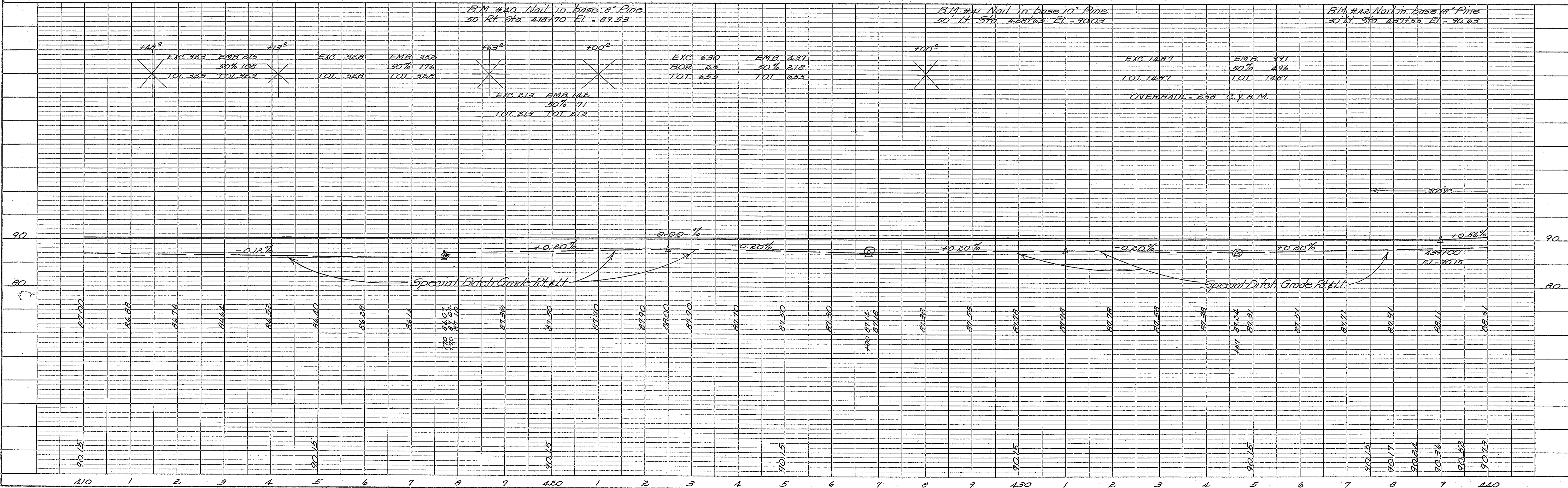
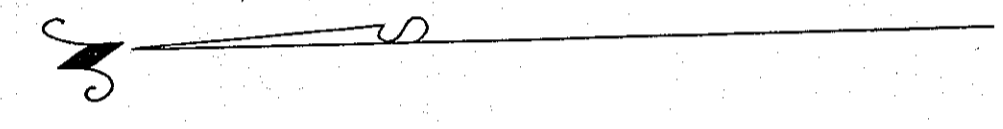
JASPER JEFFERS  
D-1-19-55 &  
D-3-14-55

PLAN	DATE	BY
SURVEYED		
PLOTTED		
NOTE BOOK CHECKED		
RT. OF WAY CHECKED		
NO.		

PROFILE	DATE	BY
SURVEYED		
GRADES CHECKED		
S. M.S. NOTED		
STRUCTURE NOTATION CHECKED		
NO.		



NOTE:-  
During construction relocate this project by using revised data on preceding sheet and revised curve data of P.I. Sta. 414+62.22

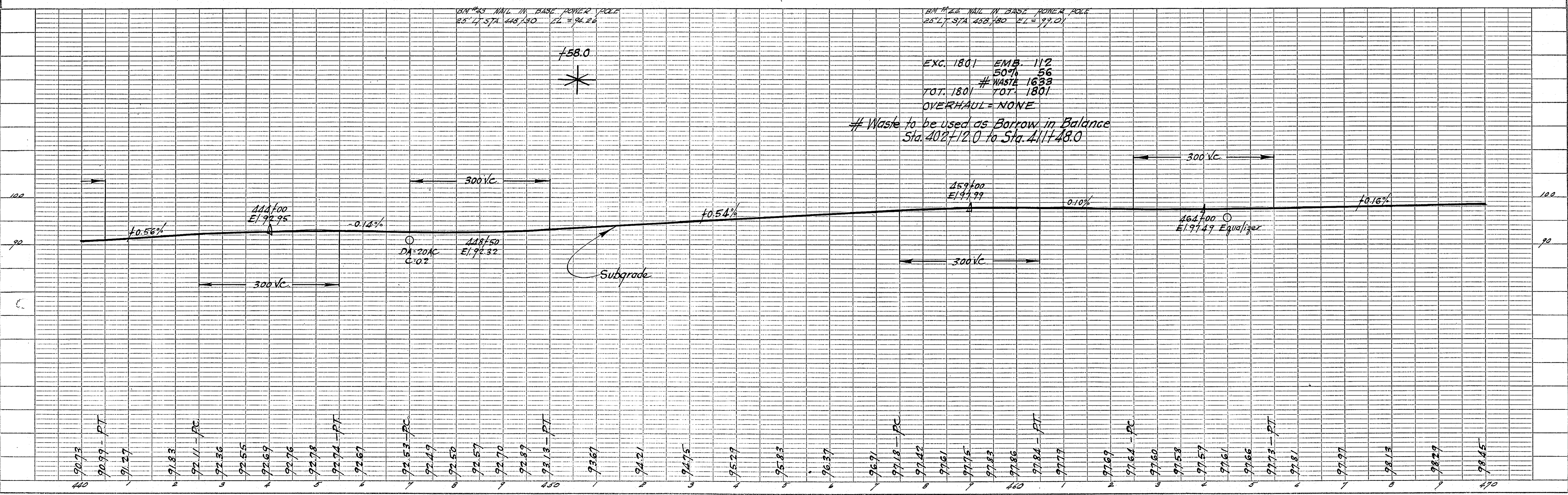
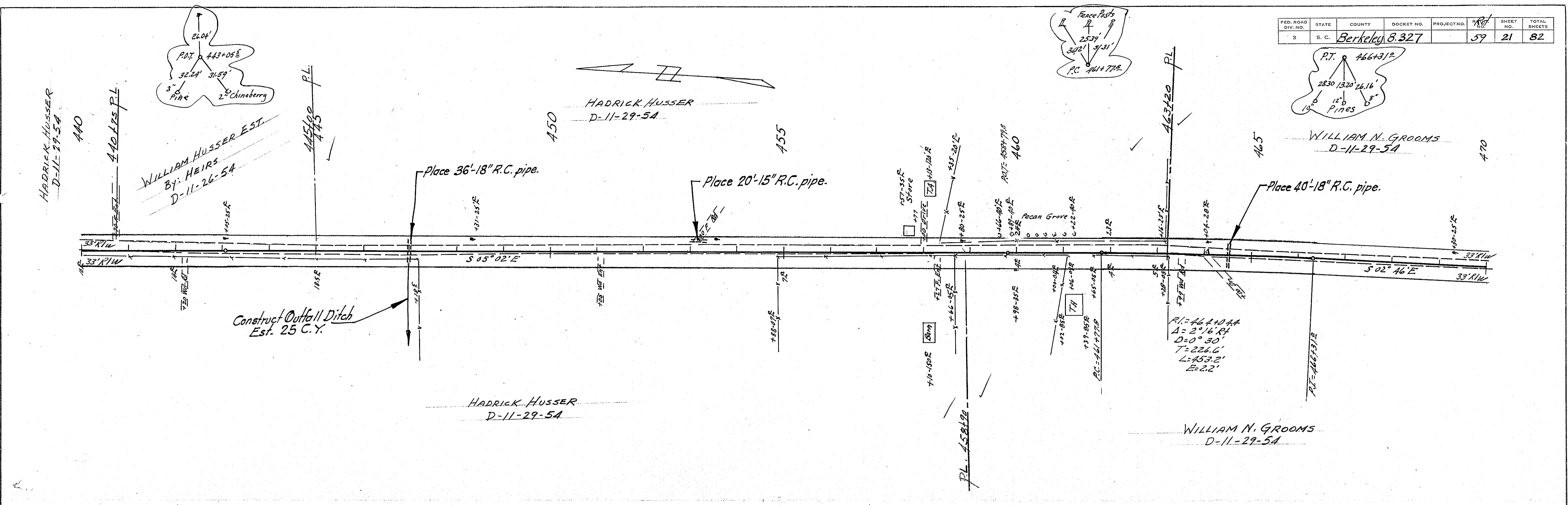




FED. ROAD DIV. NO.	STATE	COUNTY	DOCKET NO.	PROJECT NO.	SHEET NO.	TOTAL SHEETS
3	S. C.	Berkeley	8.327		59	82

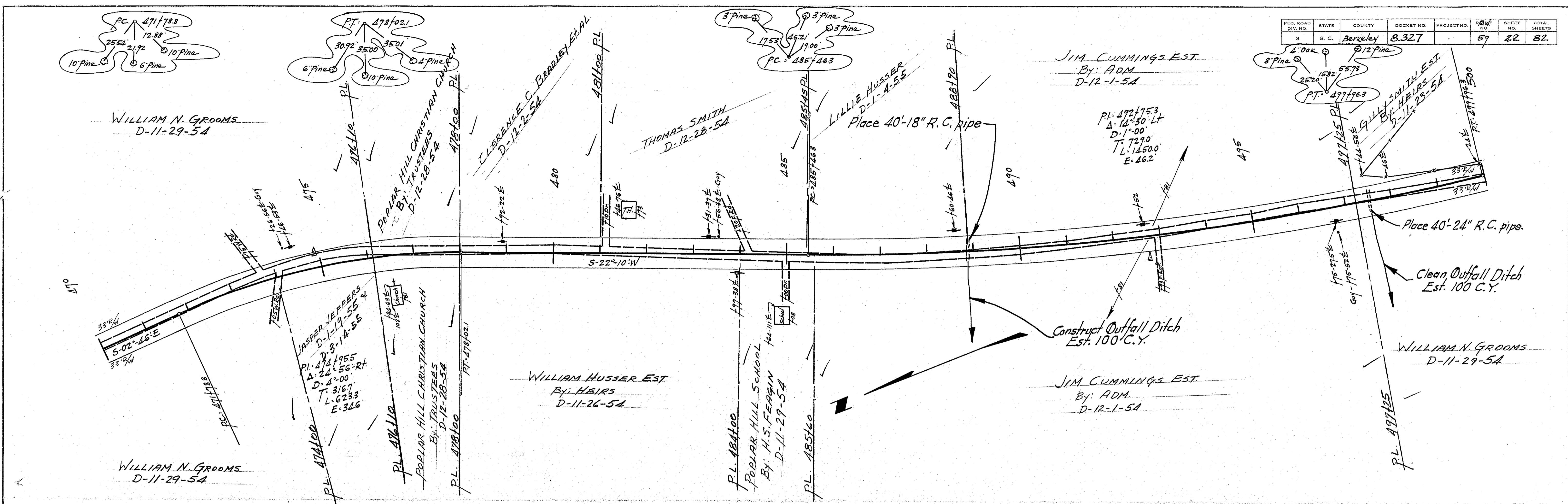
PLAN	DATE
SURVEYED ALIGNED RT. OF WAY CHECKED NO.	BY DATE

PROFILE	DATE
SURVEYED PLOTTED GRADES CHECKED S. W. NOTED STRUCTURE NOTATIONS CHECKED NO.	BY DATE

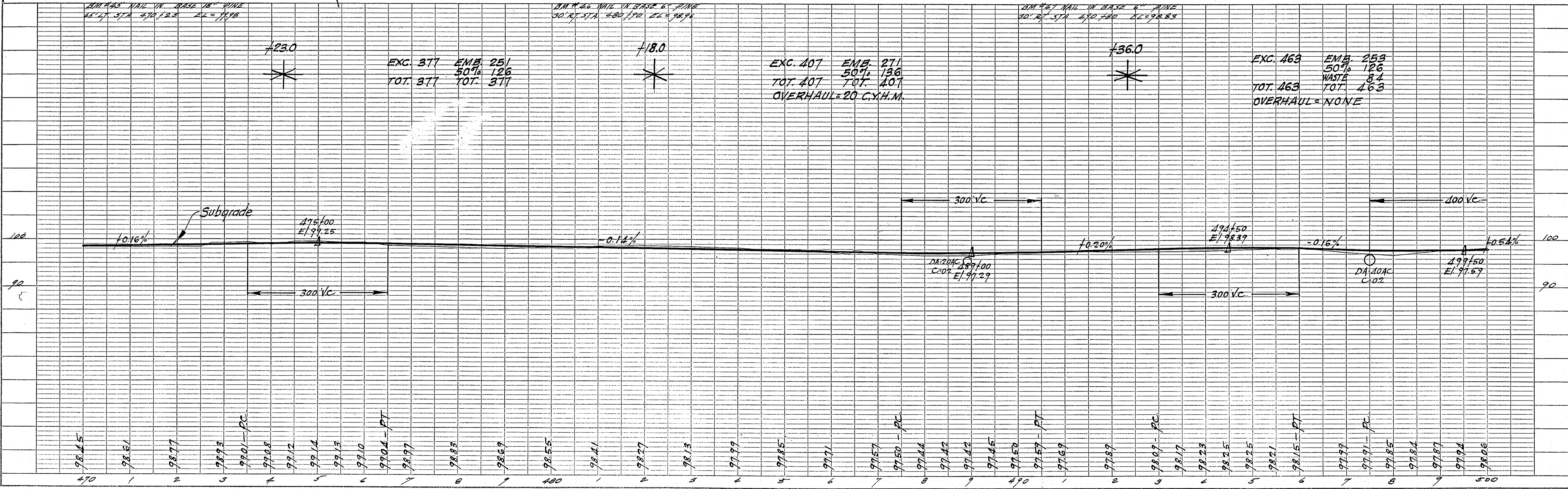


FED. ROAD DIV. NO.	STATE	COUNTY	DOCKET NO.	PROJECT NO.	SHEET NO.	TOTAL SHEETS
3	S. C.	Berkeley	8.327		59	82

PLAN	DATE	BY
SURVEYED	12/22/54	
NOTED		
PLOTTED		
CHECKED		
RT. OF WAY CHECKED		
NO.		



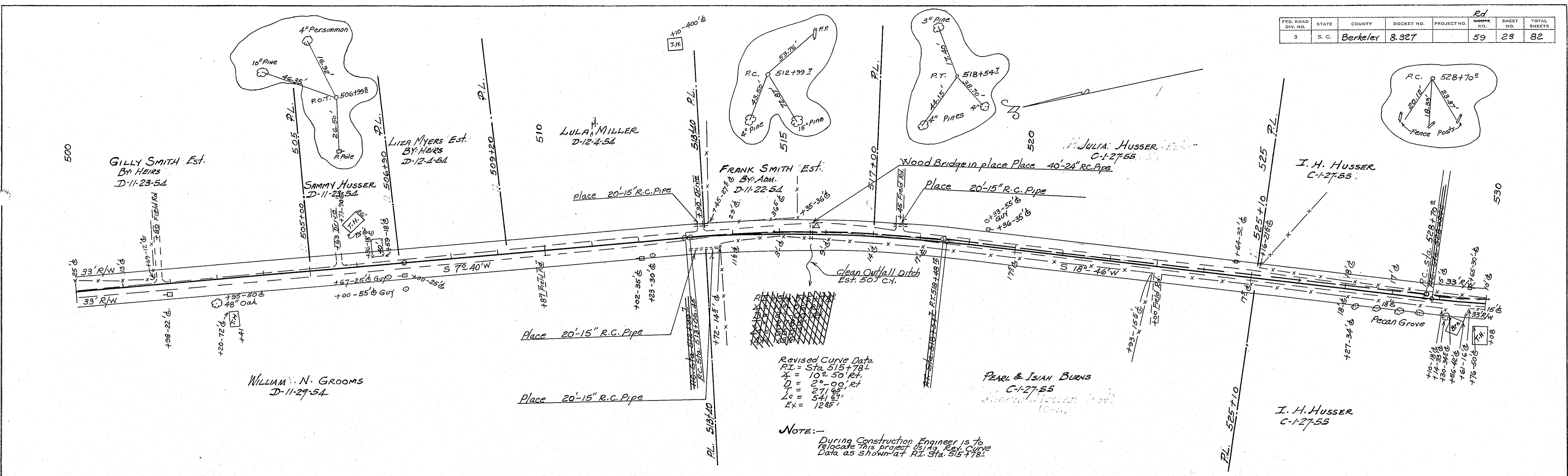
PROFILE	DATE	BY
SURVEYED		
GRADES CHECKED		
B. M. E. NOTED		
STRUCTURE NOTATION CHECKED		
NO.		



FED. ROAD DIV. NO.	STATE	COUNTY	DOCKET NO.	PROJECT NO.	Red No.	SHEET NO.	TOTAL SHEETS
3	S. C.	Berkeley	8.327		59	23	82

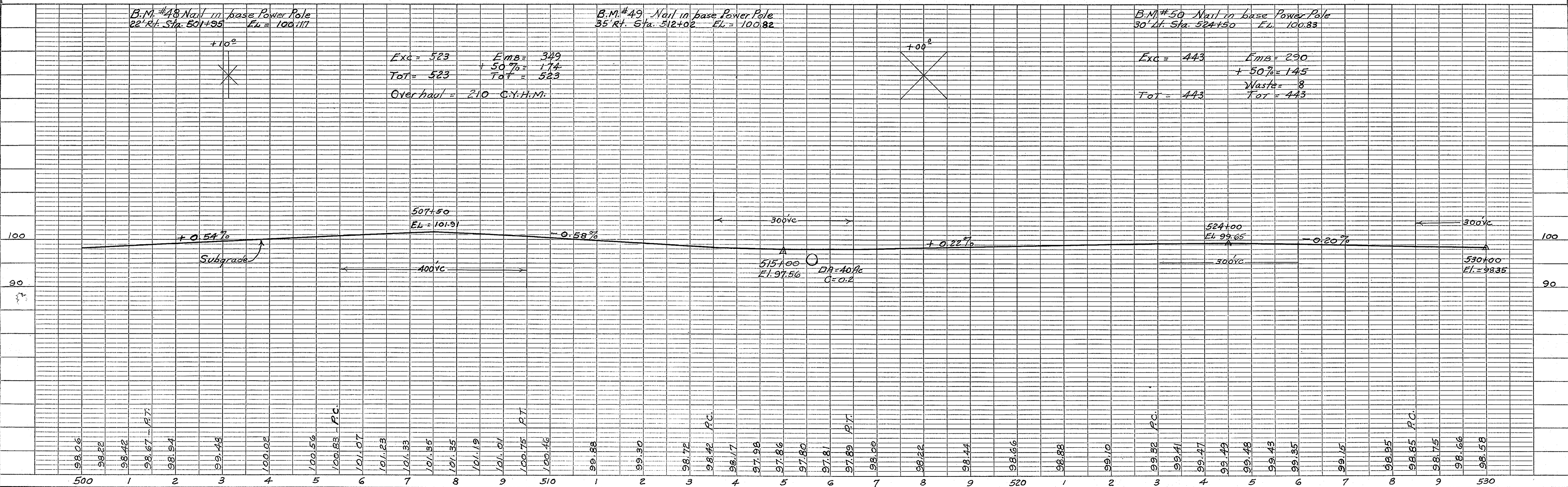
DATE	BY

SURVEYED  
 ALIGNMENT CHECKED  
 RT. OF WAY CHECKED  
 NO.



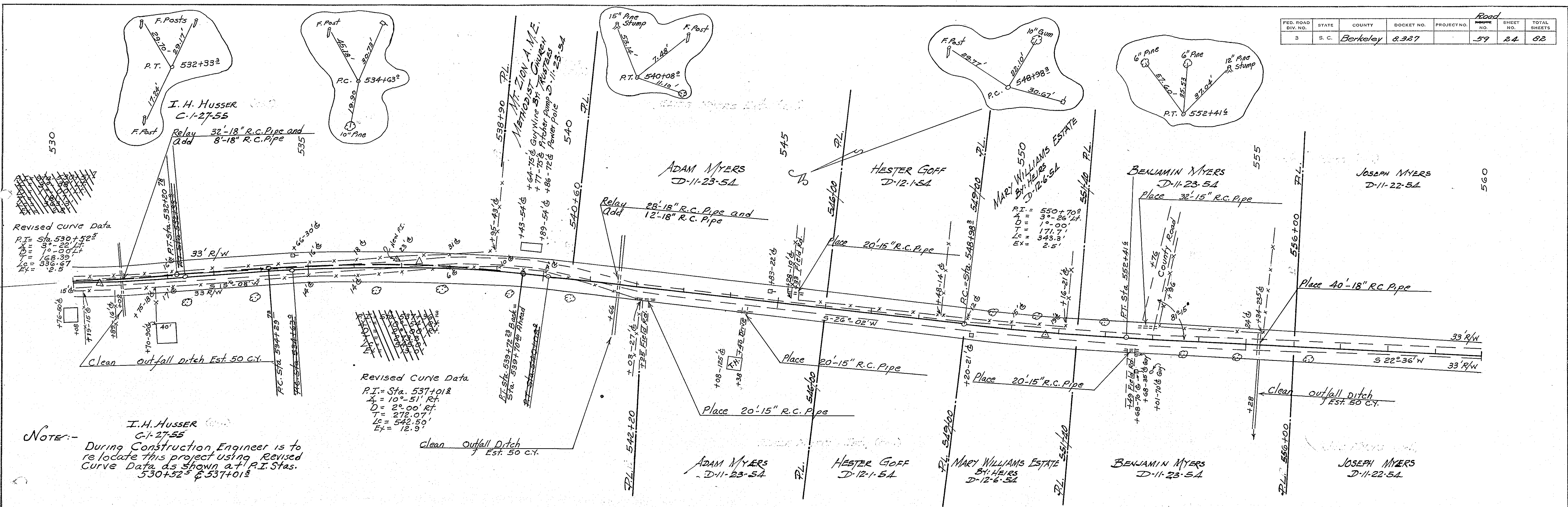
DATE	BY

SURVEYED  
 GRADES CHECKED  
 B. M. NOTED  
 STRUCTURE NOTATIONS OK'D  
 NO.



DATE \_\_\_\_\_ BY \_\_\_\_\_  
 SURVEYED \_\_\_\_\_  
 NOTE BOOK \_\_\_\_\_  
 ALIGNMENT CHECKED \_\_\_\_\_  
 RT. OF WAY CHECKED \_\_\_\_\_  
 NO. \_\_\_\_\_

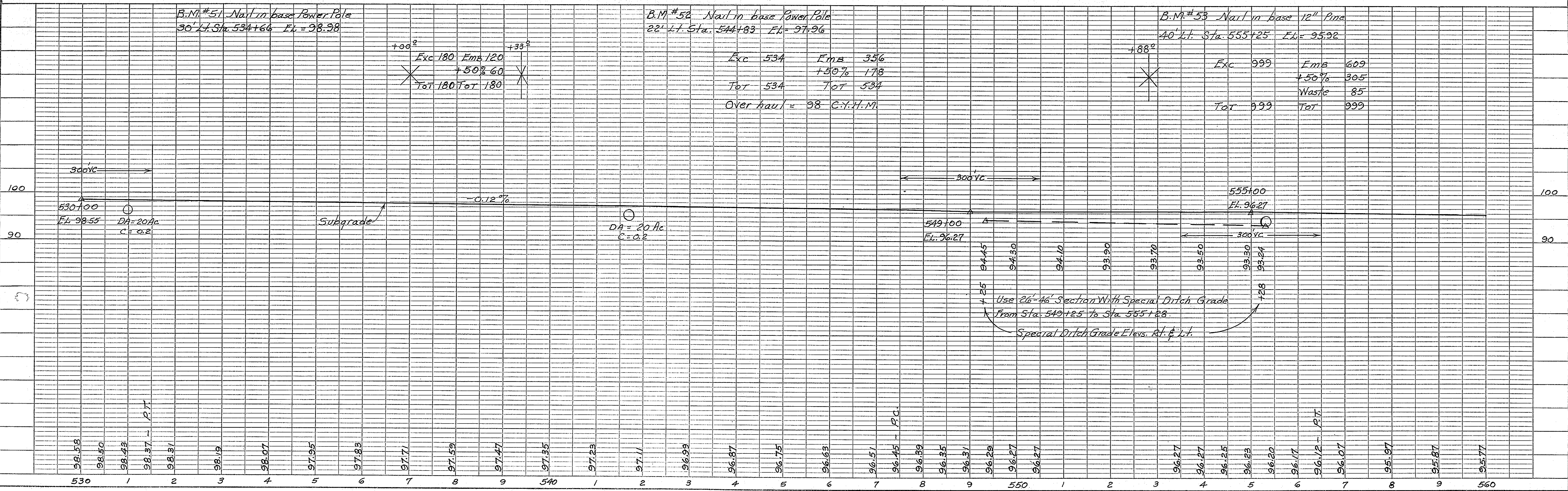
DATE \_\_\_\_\_ BY \_\_\_\_\_  
 SURVEYED \_\_\_\_\_  
 GRADES CHECKED \_\_\_\_\_  
 PLOTTED \_\_\_\_\_  
 NOTED \_\_\_\_\_  
 STRUCTURE NOTATIONS CHECKED \_\_\_\_\_  
 NO. \_\_\_\_\_



Revised Curve Data  
 P.I. = Sta. 530+52.2  
 X = 9'-10.20'  
 D = 10°-22'  
 T = 36.00'  
 Lc = 36.00'  
 E = 1.67'

Revised Curve Data  
 P.I. = Sta. 537+01.2  
 X = 10'-51'  
 D = 2°-00'  
 T = 272.07'  
 Lc = 542.50'  
 E = 12.9'

NOTE:-  
 I.H. HUSSER C-1-27-55  
 During Construction Engineer is to re locate this project using Revised Curve Data as shown at P.I. Stas. 530+52.2 & 537+01.2



+00' Exc 180 Emb 120  
 +50% 60  
 Tot 180 Tot 180

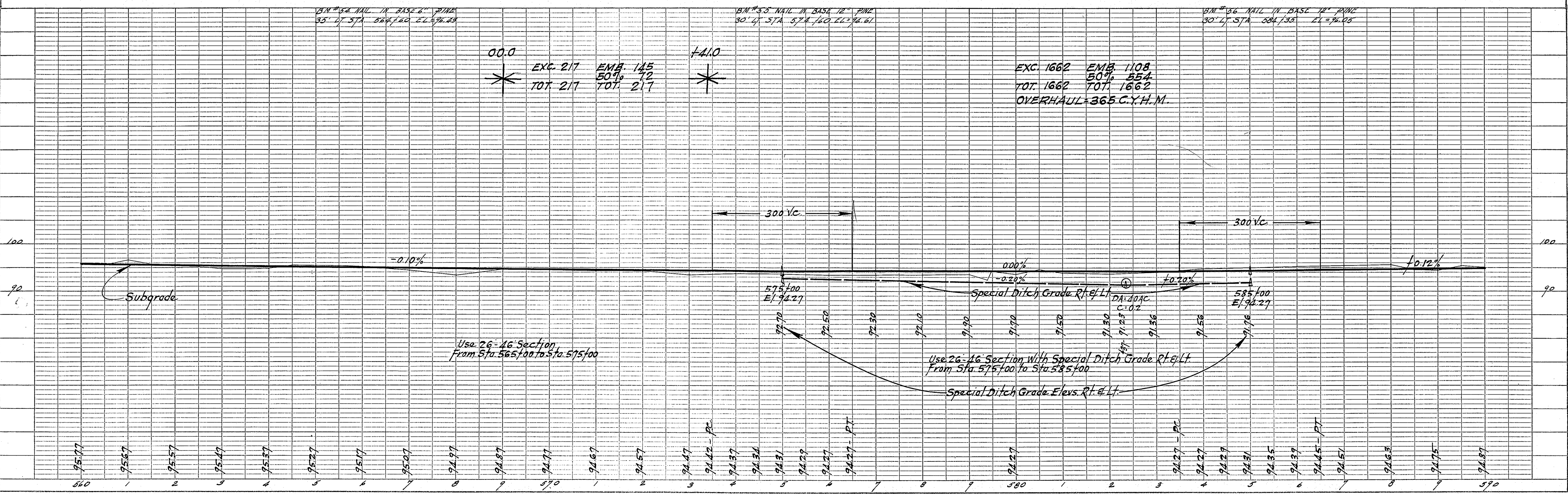
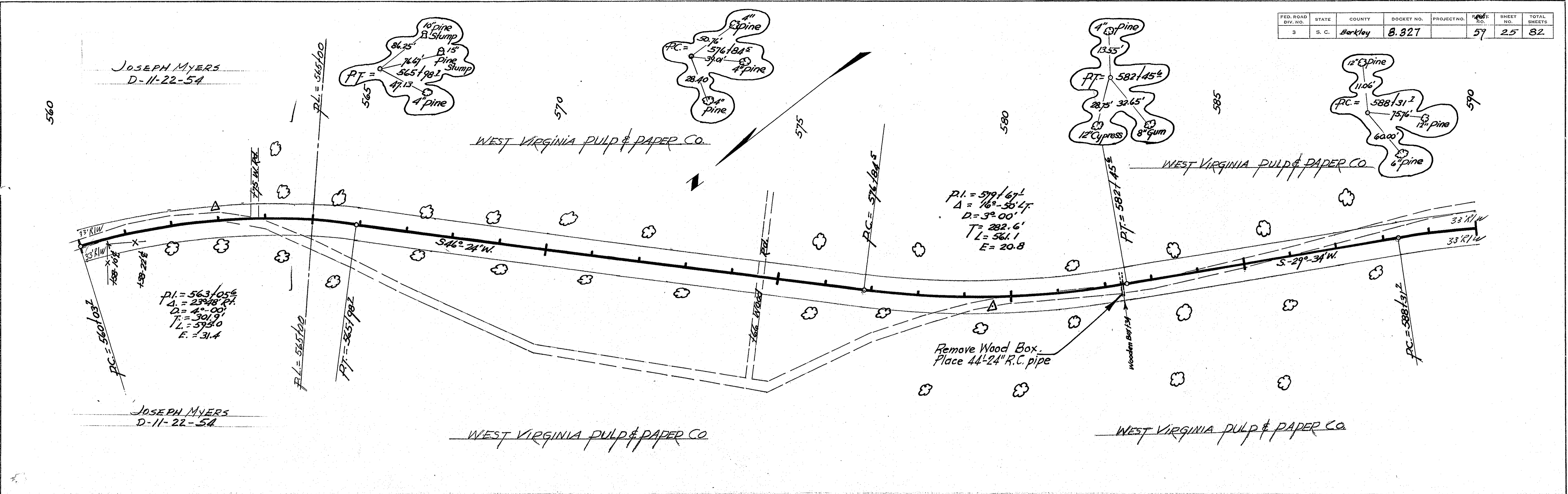
Exc 534 Emb 356  
 +50% 178  
 Tot 534 Tot 534  
 Over haul = 98 C.Y.H.M.

Exc 999 Emb 609  
 +50% 305  
 Waste 85  
 Tot 999 Tot 999

FED. ROAD DIV. NO.	STATE	COUNTY	DOCKET NO.	PROJECT NO.	SHEET NO.	TOTAL SHEETS
3	S. C.	Berkley	B. 327		57	82

PLAN  
 SURVEYED, PLOTTED, ALIGNED, CHECKED, RT. OF WAY CHECKED.  
 NO. BY DATE

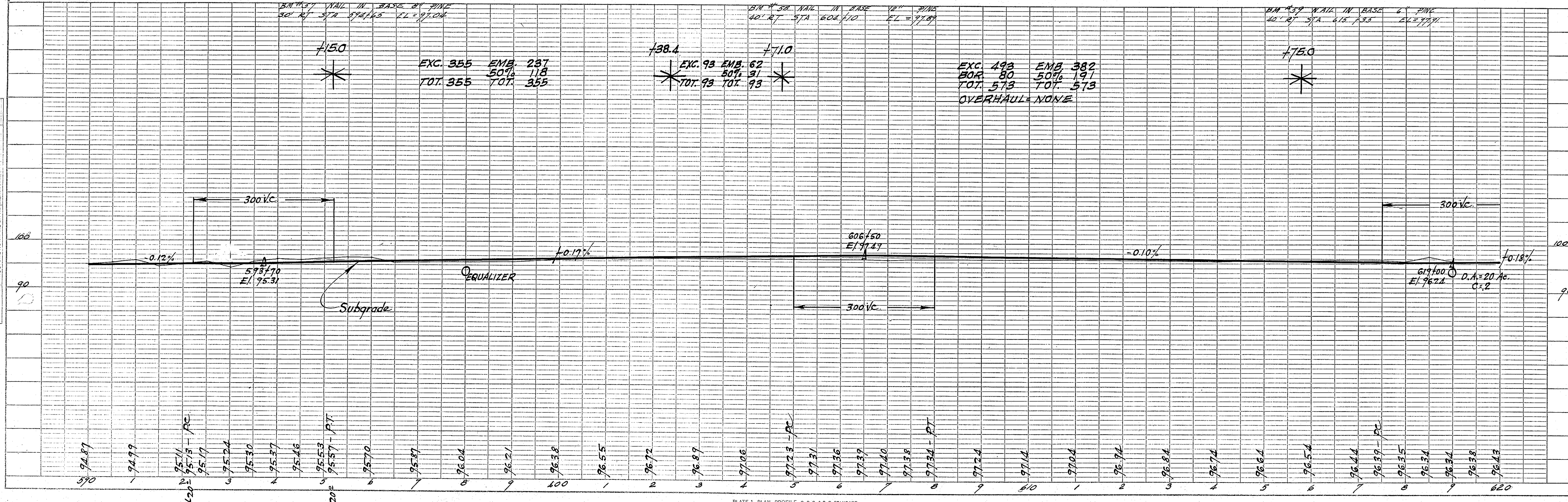
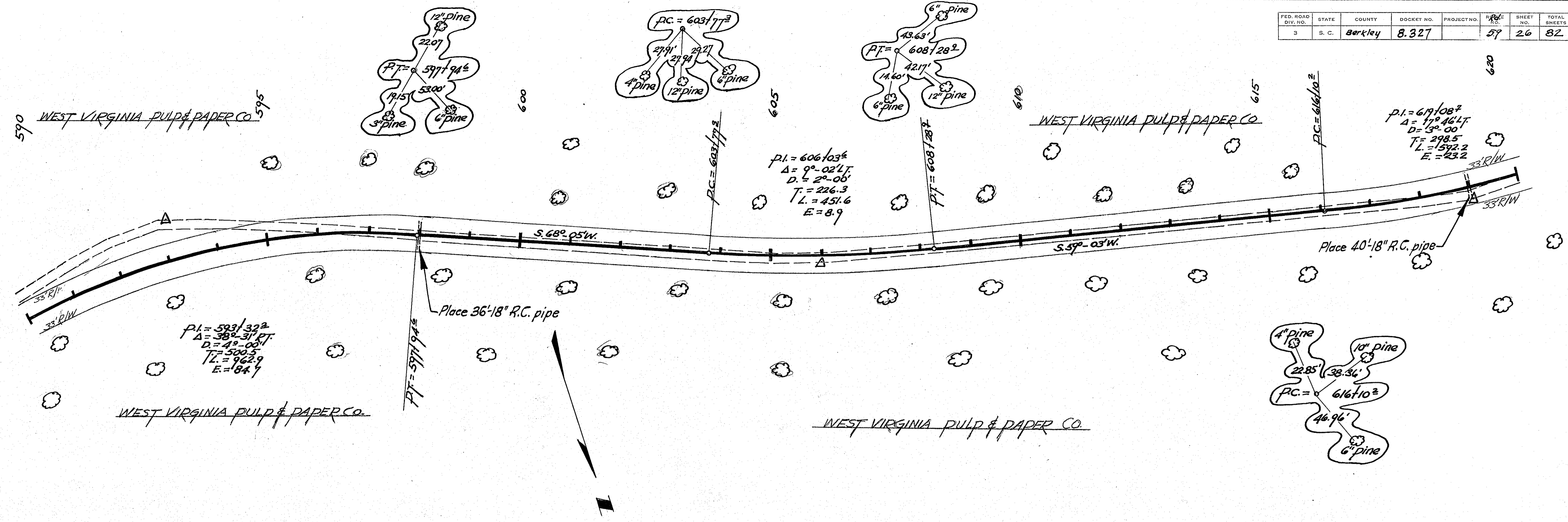
PROFILE  
 SURVEYED, GRADES CHECKED, AT. NOTED, STRUCTURE LOCATIONS CHECKED.  
 NO. BY DATE



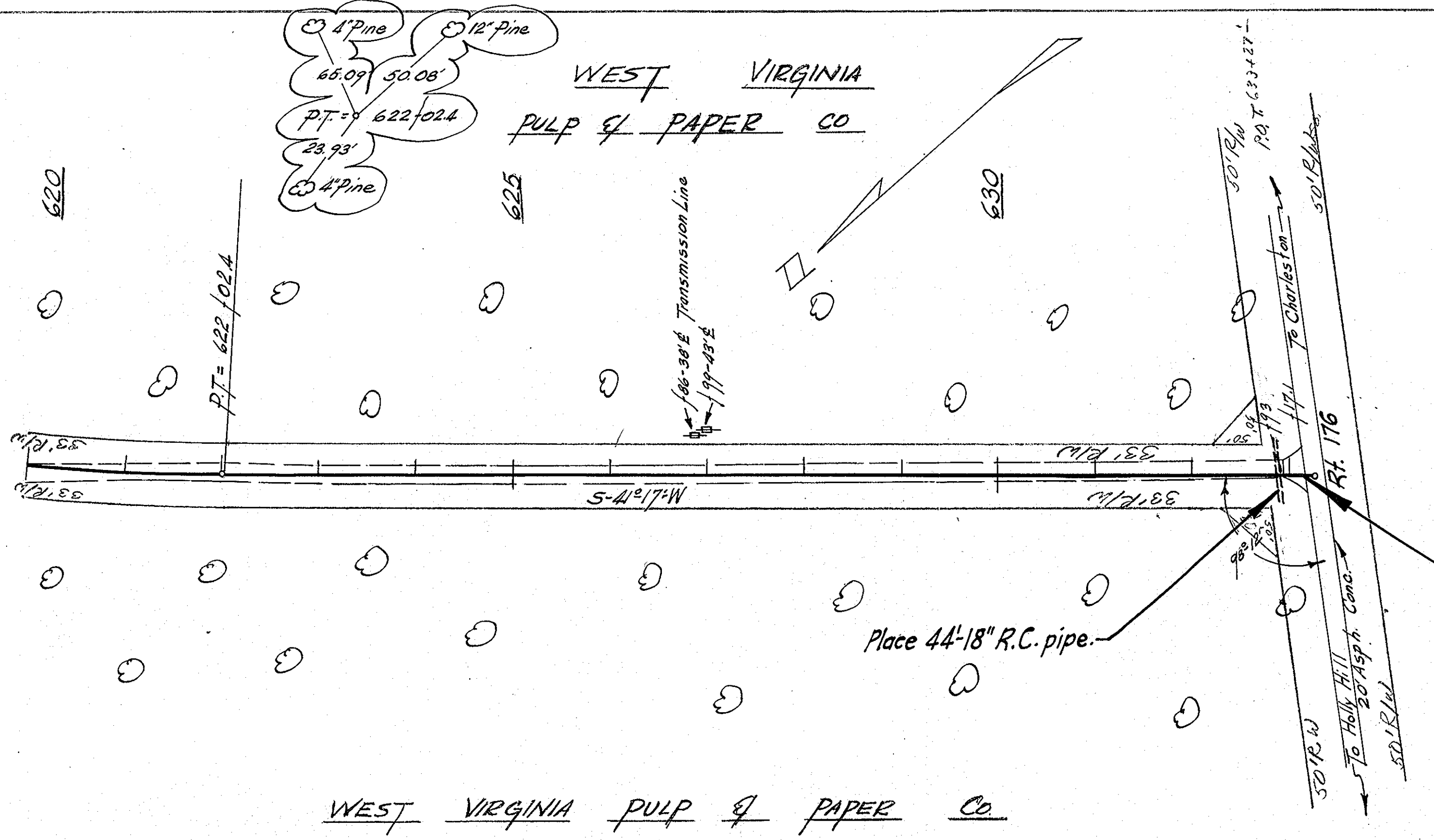
FED. ROAD DIV. NO.	STATE	COUNTY	DOCKET NO.	PROJECT NO.	SHEET NO.	TOTAL SHEETS
3	S. C.	Berkley	8.327		57	82

DATE: \_\_\_\_\_ BY: \_\_\_\_\_  
 SURVEYED: \_\_\_\_\_  
 NOTE BOOK: \_\_\_\_\_  
 ALIGNMENT CHECKED: \_\_\_\_\_  
 RT. OF WAY CHECKED: \_\_\_\_\_  
 NO. \_\_\_\_\_

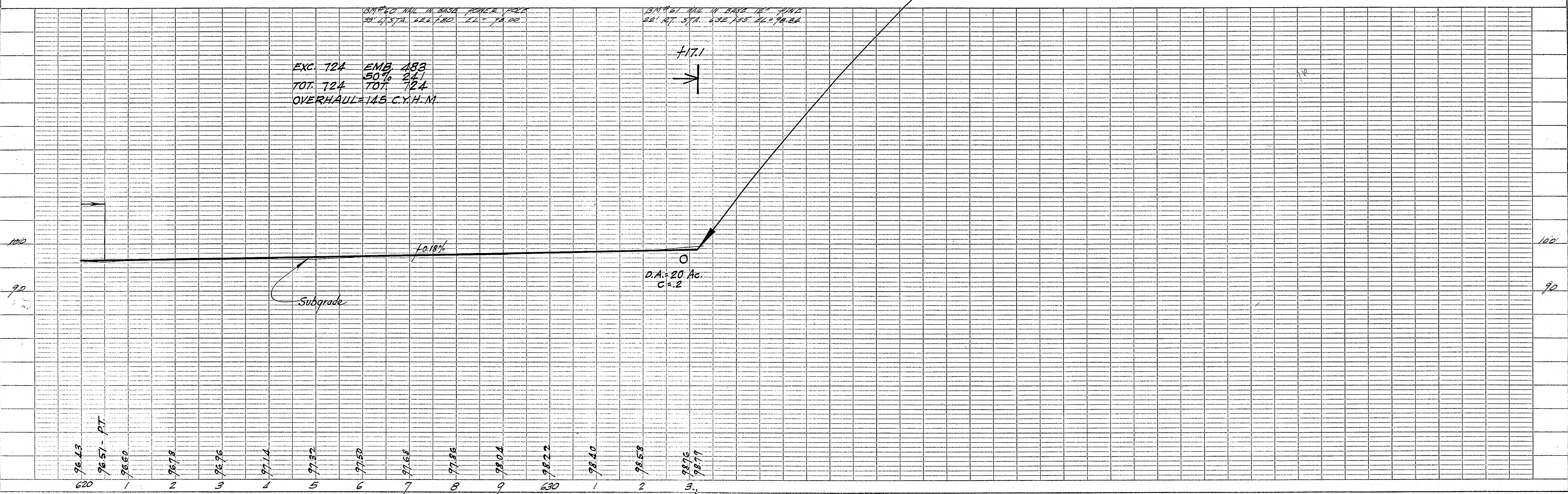
DATE: \_\_\_\_\_ BY: \_\_\_\_\_  
 SURVEYED: \_\_\_\_\_  
 NOTE BOOK: \_\_\_\_\_  
 GRADES CHECKED: \_\_\_\_\_  
 STRUCTURE NOTATIONS CHECKED: \_\_\_\_\_  
 NO. \_\_\_\_\_



DATE: \_\_\_\_\_  
 BY: \_\_\_\_\_  
 SURVEYED  
 PLOTTED  
 ALIGNMENT CHECKED  
 RT. OF WAY CHECKED  
 PLAN  
 NO. \_\_\_\_\_



DATE: \_\_\_\_\_  
 BY: \_\_\_\_\_  
 SURVEYED  
 PLOTTED  
 GRADES CHECKED  
 S. W. L. NOTES  
 PROFILE  
 NO. \_\_\_\_\_



Berkeley Co.  
 2/15/90  
 22 of 22