

INDEX OF SHEETS

SHEET No. 1	TITLE SHEET
" 2	TYPICAL SECTION
" 3	SUPERELEVATION STD.
" 4	PLAN AND PROFILE
" 5-9	CROSS SECTIONS

SOUTH CAROLINA  
STATE HIGHWAY DEPARTMENT  
COLUMBIA

PLAN AND PROFILE OF PROPOSED  
STATE HIGHWAY

DARLINGTON COUNTY

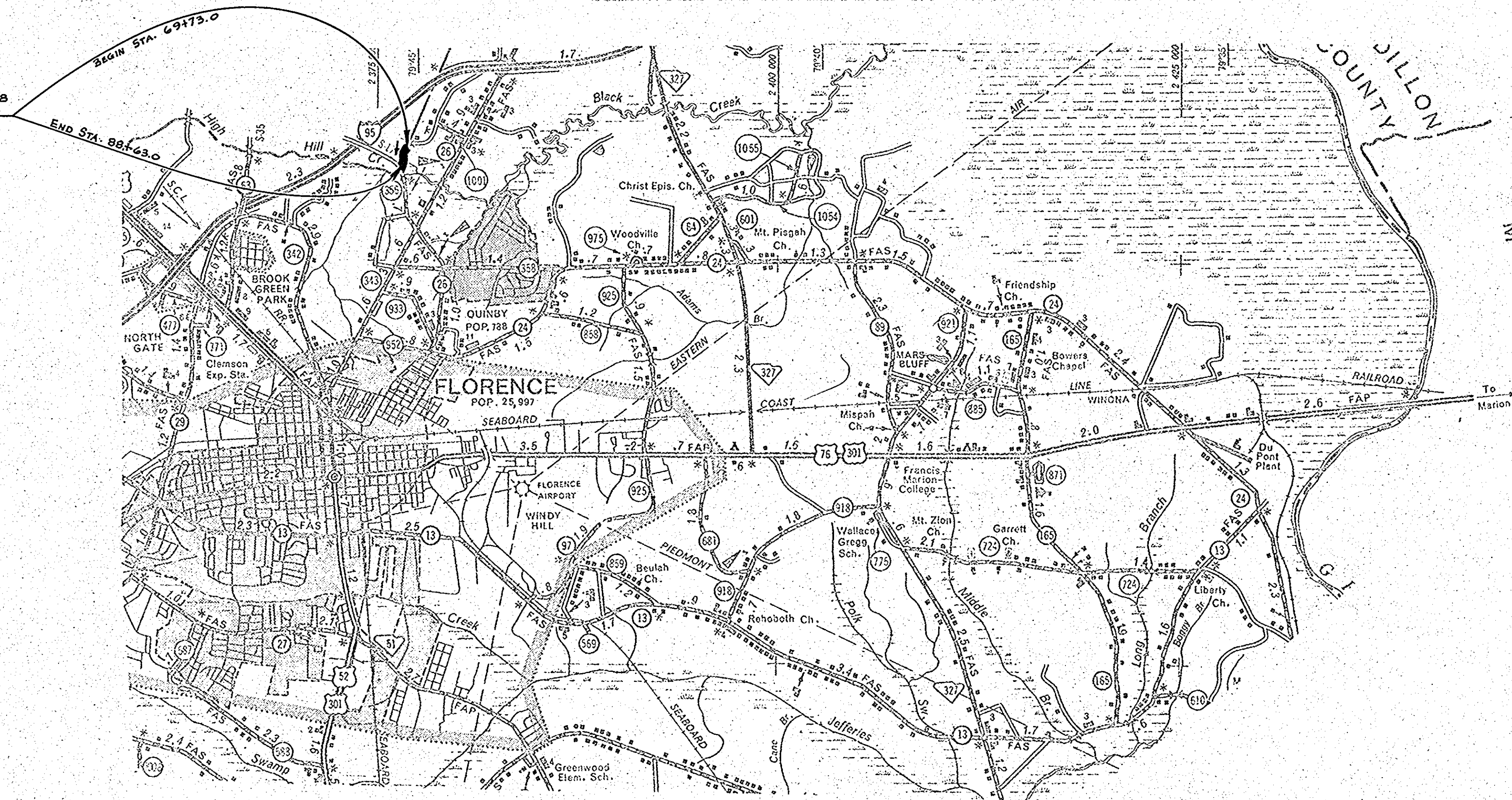
FILE 16.515 PROJ. C-515

RD. S-1018

FROM: FLORENCE CO. LINE TO: RD. S-179

SCALE: PLAN AND PROFILE 1 INCH = 100 FEET HORIZONTAL; 1 INCH = 10 FEET VERTICAL

Proj. C-515 File 16.515 Rd. S-1018  
Sta. 69+73.0 To Sta. 88+63.0  
(SEE SHEET No. (4))



LAYOUT

Scale: 1 inch = feet

Net Length of Roadway	.358 Miles
Net Length of Bridges	— Miles
Net Length of Project	.358 Miles
Length of Exceptions	— Miles
Gross Length of Project	.358 Miles

Equalities in Stationing  
— NONE —

LEGEND

PROPOSED PROJECT	—————
OTHER ROADS	—————

CONVENTIONAL SIGNS

State Line	Trolley Poles
County Line	Ponor Poles
City or Town Limits	Telephone or Telegraph Poles
Property Line	Marsh
Enclosure	Trees
Retaining Wall	Breach
Existing Road	Stumps
Grand R.O.W. Lines of	Buildings
Proposed Road	Bridges
Railroad	Concrete Box Culvert
Levee or Embankment	Pipe Culvert
Guard Rail	Grass Inlet and Culvert
Point of Intersection (P. I.)	Hub on Center Line

Note: All workmanship and material on this project to conform with South Carolina State Highway Department Standard Specifications for Highway Construction dated 1973.

FED. ROAD DIST. NO.	STATE	COUNTY	PROJECT NO.	P. A. PLAN NO.	RD. NO.	SHEET NO.	TOTAL SHEETS
3	S. C.	DARLINGTON	16.515	C-515	S-1018	1	9

SUMMARY OF ESTIMATED QUANTITIES

	S-1018 QUANTITY	UNIT
<b>EARTHWORK</b>		
Clearing and Grubbing within Roadway	Nec.	L.S.
Clearing and Grubbing of Borrow and Material Pits	0.5	ACRES
Unclassified Excavation	10,637	C.Y.
Overhaul	39,770	CYHM.
<b>BASE COURSE</b>		
Earth Type Base Course (PIT MATERIAL)	1007	C.Y.
Scarifying, Mixing, Remixing, Shaping and Reshaping	4,850	M.S.Y.
<b>SURFACING</b>		
Bituminous Surfacing (Triple Treatment) Types 1 thru 4	4,640	S.Y.
<b>STRUCTURES</b>		
15" R.C. PIPE CULVERT (CLASS III)	120	L.F.
18" R.C. PIPE CULVERT (CLASS III)	172	L.F.
<b>INCIDENTALS</b>		
SEEDING (UNMULCHED)	.750	M.S.Y.
FERTILIZER (GRADE 4-12-12)	0.1	TONS
LIME	0.2	TONS
NITROGEN (Actual)	7	lbs.

RECOMMENDED BY:  
*E. J. Shuler* 4-28-75  
LOCATION ENGINEER DATE

SUBMITTED BY:  
*J. B. Taylor* 4-28-75  
ROAD PLANS ENGINEER DATE

APPROVED FOR	DATE
_____	_____
MAYOR	
_____	
COUNCILMEN	
_____	
CLERK	

APPROVED:  
*Paul W. Cobb* 4-28-75  
STATE HIGHWAY ENGINEER DATE

DEPARTMENT OF COMMERCE  
BUREAU OF PUBLIC ROADS

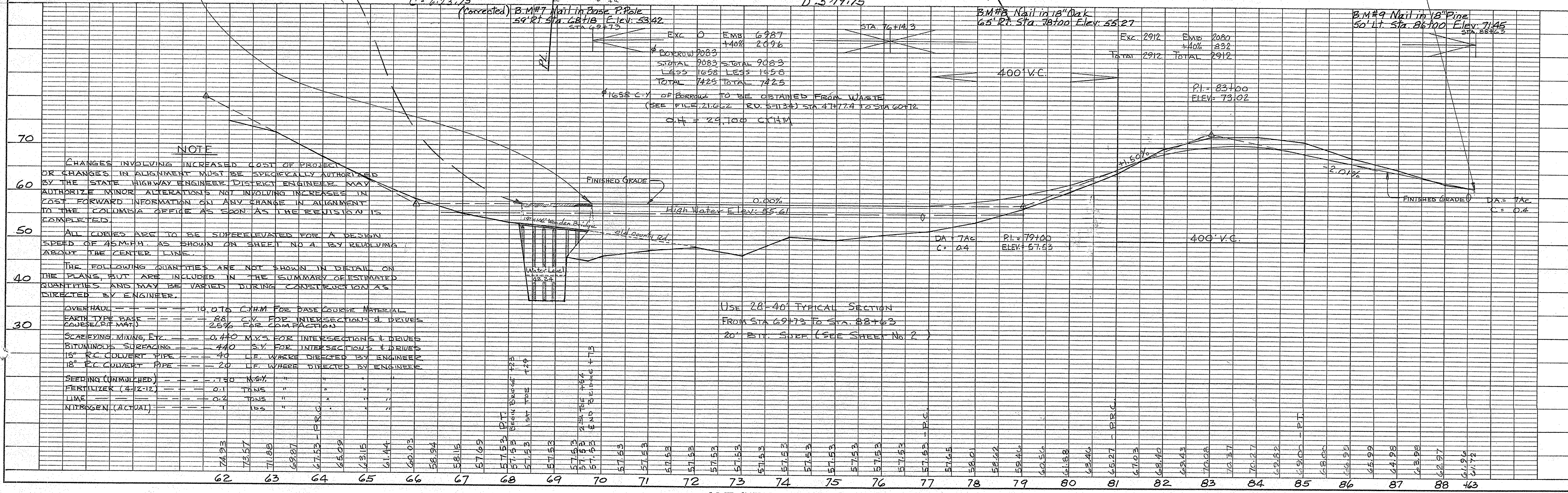
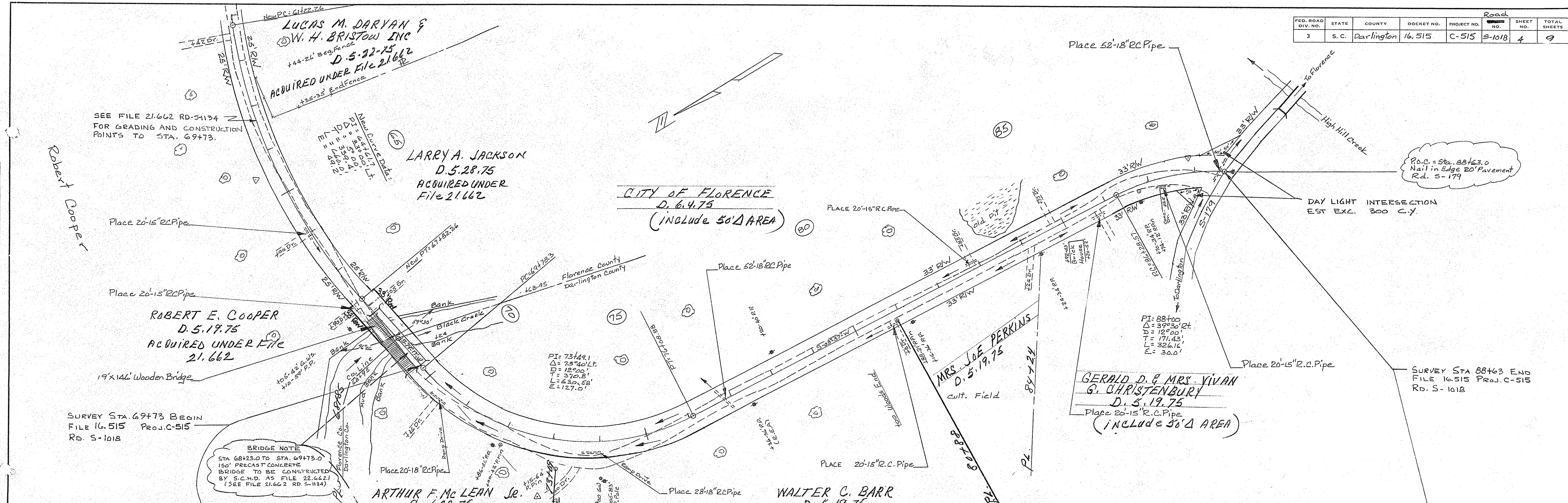
APPROVED: \_\_\_\_\_ DATE: \_\_\_\_\_  
DISTRICT ENGINEER

APPROVED: \_\_\_\_\_ DATE: \_\_\_\_\_  
DIVISION ENGINEER

FED. ROAD DIV. NO.	STATE	COUNTY	DOCKET NO.	PROJECT NO.	ROAD NO.	SHEET NO.	TOTAL SHEETS
3	S.C.	Darlington	16,515	C-515	S-1018	4	9

BY	DATE

BY	DATE



**NOTE**

CHANGES INVOLVING INCREASED COST OF PROJECT OR CHANGES IN ALIGNMENT MUST BE SPECIALLY AUTHORIZED BY THE STATE HIGHWAY ENGINEER. DISTRICT ENGINEERS MAY AUTHORIZE MINOR ALTERATIONS NOT INVOLVING INCREASES IN COST. FORWARD INFORMATION ON ANY CHANGE IN ALIGNMENT TO THE COLUMBIA OFFICE AS SOON AS THE REVISION IS COMPLETED.

ALL CURVES ARE TO BE SUPERELEVATED FOR A DESIGN SPEED OF 45 M.P.H. AS SHOWN ON SHEET NO. 4, BY REVOLVING ABOUT THE CENTER LINE.

THE FOLLOWING QUANTITIES ARE NOT SHOWN IN DETAIL ON THE PLANS, BUT ARE INCLUDED IN THE SUMMARY OF ESTIMATED QUANTITIES AND MAY BE VARIED DURING CONSTRUCTION AS DIRECTED BY ENGINEER.

OVERHAUL	10.0 TO 12.0	C.Y.M. FOR BASE COURSE MATERIAL
EARTH TYPE BASE COURSE (P.M.M.)	88	C.Y. FOR INTERSECTIONS & DRIVES
	25%	FOR COMPACTION
SCAPING MIXING, ETC.	0.440	M.Y.S. FOR INTERSECTIONS & DRIVES
BITUMINOUS SCREAZING	440	S.Y. FOR INTERSECTIONS & DRIVES
15" R.C. CONDUIT PIPE	40	L.F. WHERE DIRECTED BY ENGINEER
18" R.C. CONDUIT PIPE	20	L.F. WHERE DIRECTED BY ENGINEER
SEEDING (UNMULCHED)	1.150	M.S.Y.
FERTILIZER (4-12-12)	0.1	TONS
LIME	0.2	TONS
NITROGEN (ACTUAL)	1	TONS

Exc.	0	EMB.	6987
		+40%	2496
BORROW	9083		
SUBTOTAL	9083	TOTAL	9083
LESS	1658	LESS	1458
TOTAL	7425	TOTAL	7425

1658 C.Y. OF BORROW TO BE OBTAINED FROM WASTE (SEE FILE 21.662 RD. S-1134) STA. 4717.4 TO STA. 6012

C.H. = 29,100 C.Y.M.

Exc.	2912	EMB.	2080
		+40%	832
TOTAL	2912	TOTAL	2912

PI = 83+00  
ELEV. = 73.02

Exc.	2912	EMB.	2080
		+40%	832
TOTAL	2912	TOTAL	2912

PI = 83+00  
ELEV. = 73.02