

INDEX OF SHEETS

- Sheet N^o 1 Title Sheet
- " " 1A Moving Item Sheet
- " " 2-2 Typical Section of Improvement
- " " 3 Blank
- " " 4 Superelevation Standard
- " " 5 Manhole Standard
- " " 6 Drop Inlet (24"x36")
- " " 7-9 Plan and Profile (Rd. S-1134)
- " " 10-14 Plan and Profile (Rd. S-1140)
- * " " 15-21 Cross Sections (Rd. S-1134)
- " " 22-33 Cross Sections (Rd. S-1140)
- * " " 14A Bridge Standard

SOUTH CAROLINA
STATE HIGHWAY DEPARTMENT
COLUMBIA

PLAN AND PROFILE OF PROPOSED
STATE HIGHWAY
FLORENCE COUNTY
PROJECT C-662 FILE 21.662

ROAD: S-1134 FROM: FRONTAGE ROAD (I-95) TO: DARLINGTON COUNTY LINE
ROAD: S-1140 FROM: RD. S-551 TO: ROUTE 327

PROJECT NO.	FILE NO.	SECTION NO.	SHEET NO.	TOTAL SHEETS	DATE
C-662	21.662	C-662	S-1134 S-1140	1	33

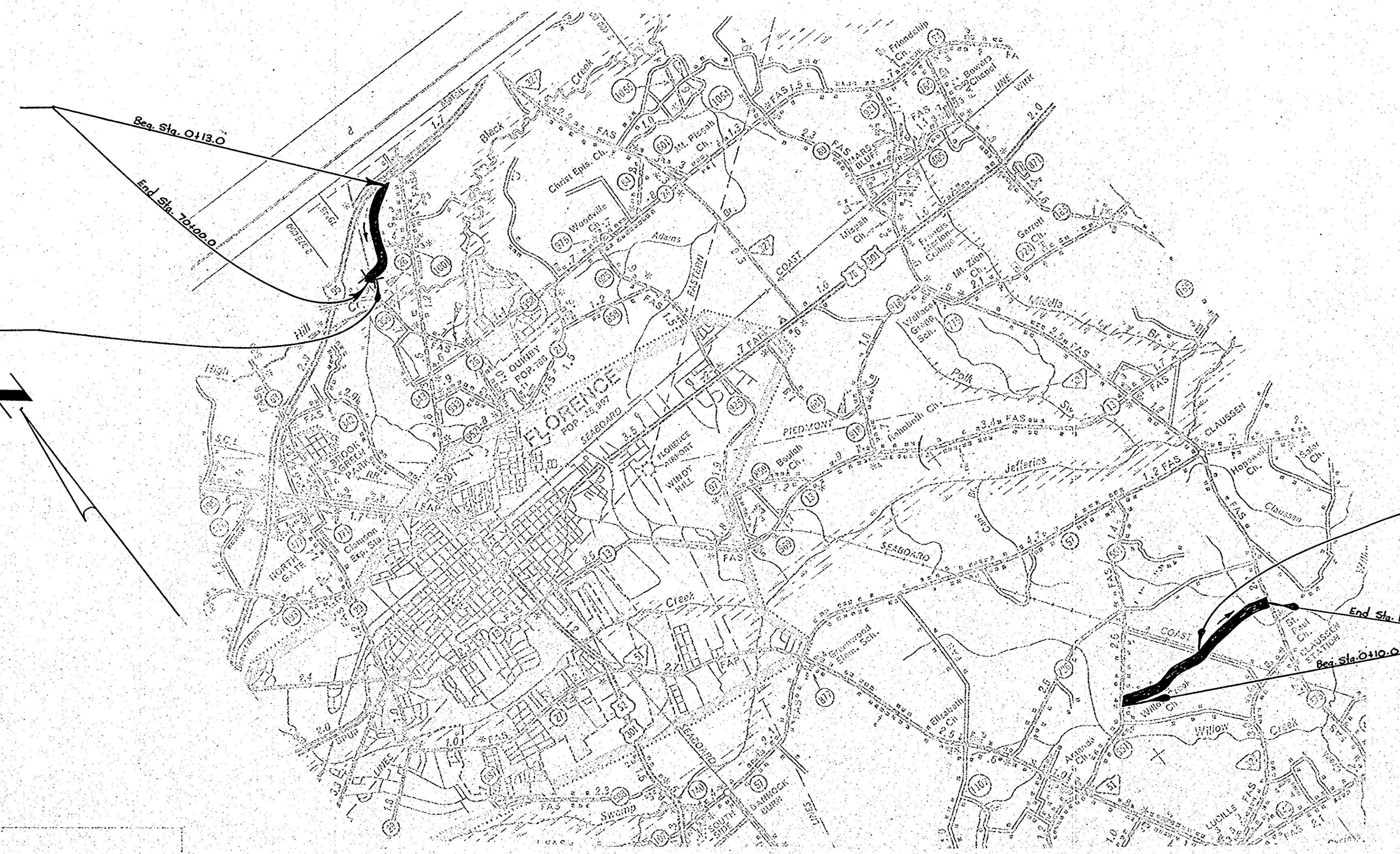
SUMMARY OF ESTIMATED QUANTITIES			
	S-1134 Quantity	S-1140 Quantity	Unit
EARTHWORK			
Clearing and Grubbing within Roadway	Nec.	Nec.	L.S.
Clearing and Grubbing of Borrow and Material Pits	1.5	2.5	Acres
Unclassified Excavation	6,956	8,289	C.Y.
Overhaul	15,586	43,124	C.Y.H.M.
Selected Material for Shoulders			
BASE COURSE			
Earth Type Base Course (Pit Material)	3514	6248	C.Y.
Scarifying, Mixing, Remixing, Shaping and Reshaping	16,903	30,061	M.S.Y.
SURFACING			
Bituminous Surfacing (Triple Treatment) Types 1 thru 4	16,143	28,720	S.Y.
STRUCTURES			
15" R.C. Pipe Culvert (Class III)	408	412	L.F.
18" R.C. Pipe Culvert (Class III)	164	260	L.F.
24" R.C. Pipe Culvert (Class III)	-	64	L.F.
30" R.C. Pipe Culvert (Class III)	-	8	L.F.
36" R.C. Pipe Culvert (Class III)	-	8	L.F.
15" Relaid Pipe Culvert	40	317	L.F.
18" Relaid Pipe Culvert	44	48	L.F.
INCIDENTALS			
4" Clay Tile Underdrain	-	50	L.F.
Manhole	2	-	Each
Drop Inlet (24"x36")	1	-	Each
Drop Inlet (24"x36") Using Salvaged Casting	1	-	Each
Seeding (Unmulched)	2,250	3,750	M.S.Y.
Fertilizer (Grade 4-12-12)	0.4	0.5	Ton
Lime	0.8	1.0	Ton
Nitrogen (Actual)	28	35	Lbs.

Proj. C-662 File 21.662 Road: S-1134
Sta. 0+13.0 To Sta. 70+00.0
(See Sheet N^o 7-9)

Sta. 68+23.0 To Sta. 69+73.0
150.0' Precast Concrete Bridge
To Be Constructed By S.C.H.D.
As File 21.662.1

Exception To Project
Sta. 64+79.15 - Sta. 64+89.35 (10.2')

Proj. C-662 File 21.662 Road: S-1140
Sta. 0+10.0 To Sta. 120+98.0
(See Sheet N^o 10-14)



CONVENTIONAL SIGNS	
State Line	Trailer Poles
County Line	Power Poles
City or Town Limits	Telephone or Telegraph Poles
Priority Lane	Marsh
Grade	Trees
Retention Wall	Break
Crack in Road	Slopes
Proposed Right of Way Line of	Mullings
Proposed Road	Bridge
Relayed	Concrete Box Culvert
Level of Embankment	Pipe Culvert
Grade P.S.	Street Light and Conduit
Point of Intersection P.S.	Iron or Galvanized Line

LEGEND	
PROPOSED PROJECT	ROADWAY
OTHER ROADS	RAILROAD

	S-1134	S-1140	
Net Length of Roadway	1.295	2.287	Miles
Net Length of Bridges	0.028	-	Miles
Net Length of Project	1.323	2.287	Miles
Length of Intersections	-	0.002	Miles
Gross Length of Project	1.323	2.289	Miles

Note: All workmanship and material on this project shall conform with South Carolina State Highway Department Standard Specifications for Road and Bridge Construction, 1973.

APPROVED FOR	DATE
MAYOR	
CLERK	

RECOMMENDED BY: *J. Shuler* 7-29-74
LOCATION ENGINEER
SUBMITTED BY: *J. B. Daylor* 7-29-74
ROAD PLANS ENGINEER

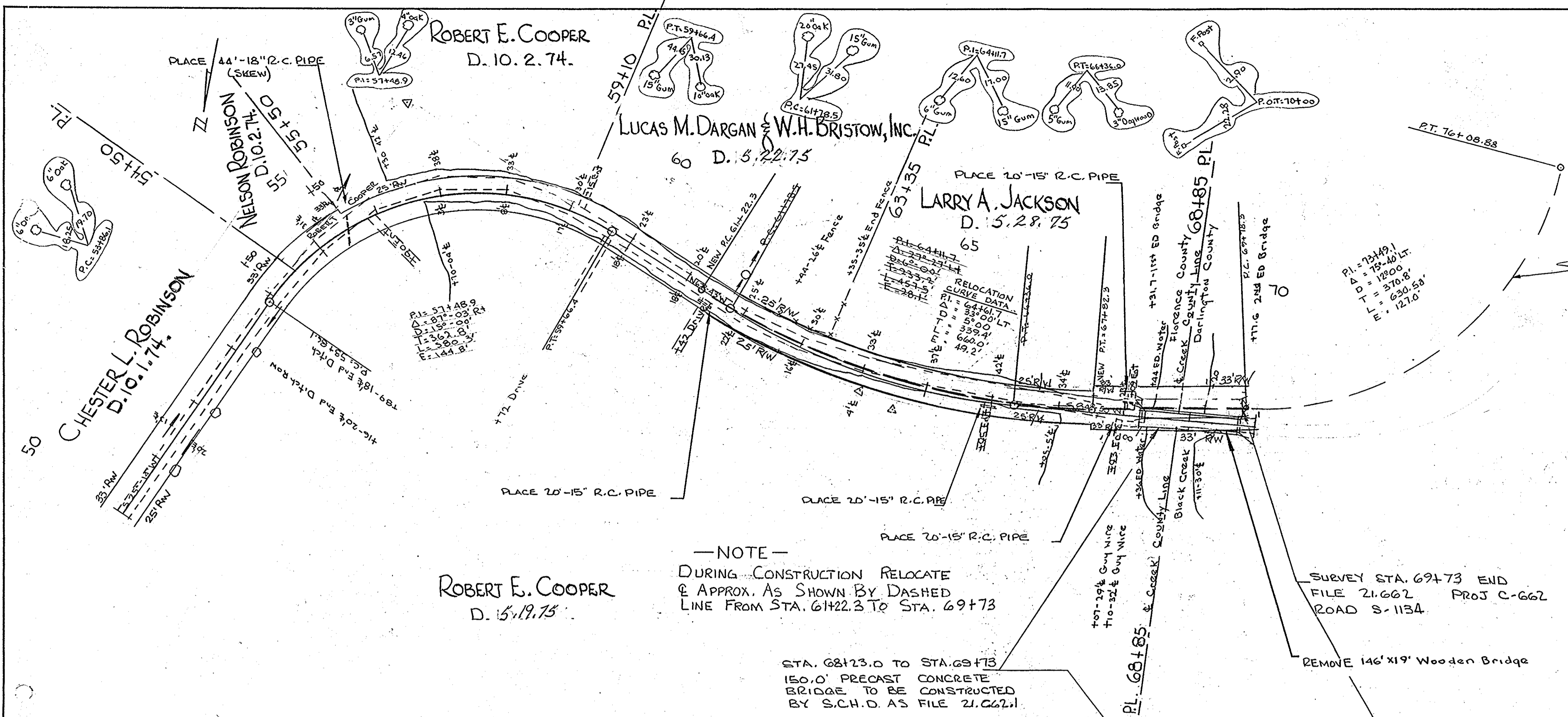
APPROVED: *Paul W. Cobb* 8-7-74
STATE HIGHWAY ENGINEER

DEPARTMENT OF COMMERCE
BUREAU OF PUBLIC ROADS
APPROVED: _____ DATE _____
DISTRICT ENGINEER
APPROVED: _____ DATE _____
DIVISION ENGINEER

FED. ROAD DIV. NO.	STATE	COUNTY	DOCKET NO.	PROJECT NO.	ROUTE NO.	SHEET NO.	TOTAL SHEETS
3	S.C.	Florence	21.662	C-662	S-1134	9	33

Alignment And R/W Revised As Per P.S.&E
By: L.J. 1/24/75
R/W at Bridge Revised 4/28/75

PLAN	DATE	BY
NO. _____	_____	_____



SEE FILE 16.515 RD. S-1018
FOR GRADING & CONSTRUCTION POINTS
FROM STA. 69+73

ROBERT E. COOPER
D. 5.19.75

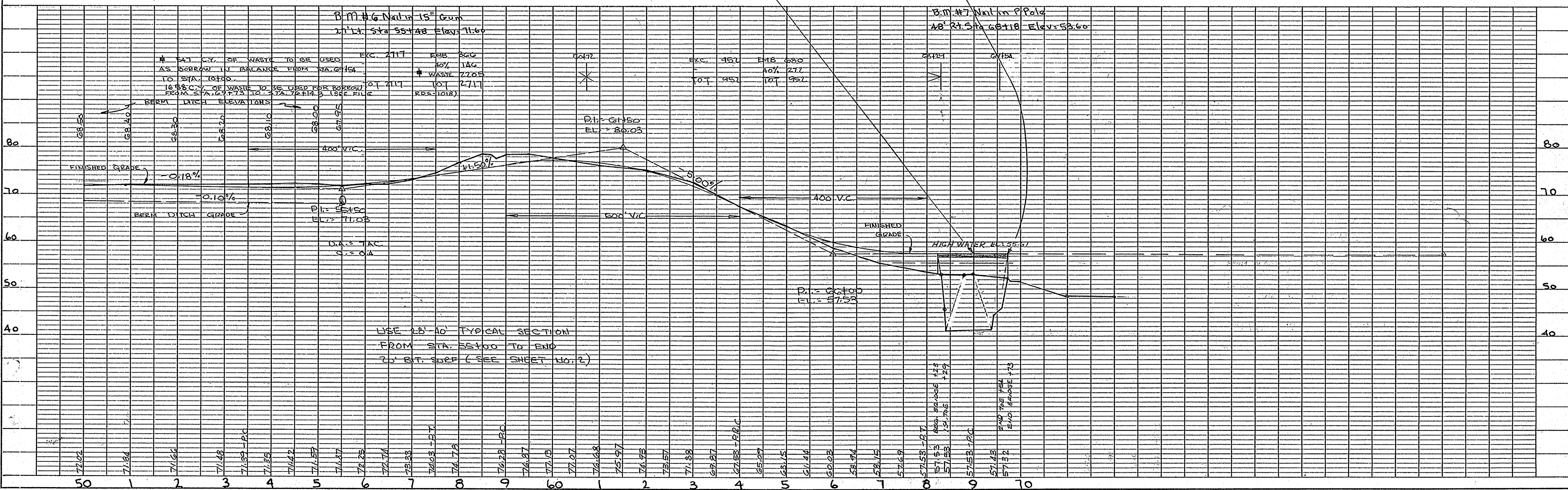
—NOTE—
DURING CONSTRUCTION RELOCATE
& APPROX. AS SHOWN BY DASHED
LINE FROM STA. 61+22.3 TO STA. 69+73

STA. 68+23.0 TO STA. 69+73
150.0' PRECAST CONCRETE
BRIDGE TO BE CONSTRUCTED
BY S.C.H.D. AS FILE 21.662.1

SURVEY STA. 69+73 END
FILE 21.662 PROJ C-662
ROAD S-1134.

REMOVE 146'x19' Wooden Bridge

PROFILE	DATE	BY
NO. _____	_____	_____



USE 18'-10' TYPICAL SECTION
FROM STA. 55+00 TO END
2 1/2\"/>