

**INDEX OF SHEETS**

SHEET No. 1 TITLE PAGE  
 " " 2 TYPICAL CROSS SECTIONS OF IMPROVEMENT  
 " " 3 ENDWALLS FOR PIPE CULVERTS  
 " " 4 SUPERELEVATION STANDARD  
 " " 5 STANDARD DESIGN FOR SHOULDER DRAINS.  
 " " 6 STANDARD DESIGN FOR FED. AID MARKERS.  
 " " 7-12 PLAN AND PROFILE STR. 1172+85.0 TO STR. 1312+00.0  
 " " 13-37 CROSS-SECTIONS STR. 1172+85.0 TO STR. 1312+00.0

**SOUTH CAROLINA  
 STATE HIGHWAY DEPARTMENT  
 COLUMBIA**

**PLAN AND PROFILE OF PROPOSED  
 STATE HIGHWAY**

FED. AID SECONDARY PROJECT  
 NO. 41-B(1)  
 DOCKET NO. 16.222  
 DARLINGTON COUNTY  
 ROUTE NO. 34  
 FROM GREAT PEE DEE RIVER TO NEAR MECHANICSVILLE

SCALES: PLAN AND PROFILE 1 INCH=100 FEET HORIZONTAL; 1 INCH=10 FEET VERTICAL.

FED. ROAD DIST. NO.	STATE	COUNTY	F.A.S. PROJ. NO.	ROUTE NO.	SHEET NO.	TOTAL SHEETS
14	S. C.	DARLINGTON	41-B(1)	34	1	37

**SUMMARY OF ESTIMATED QUANTITIES**

STATION	SHEET NO.	ITEM	CONCRETE (CU. YDS.)		REINFORCING STEEL (LBS.)	STRUCT. EXCAV. CU. YDS.	PILES (LINEAR FEET)		RIP RAP
			CLASS "A"	CLASS "B"			TREATED	UNTREATED	
1297+00	11	BOX FOR SPRING	2.0						
<b>TOTALS</b>			<b>2.0</b>						

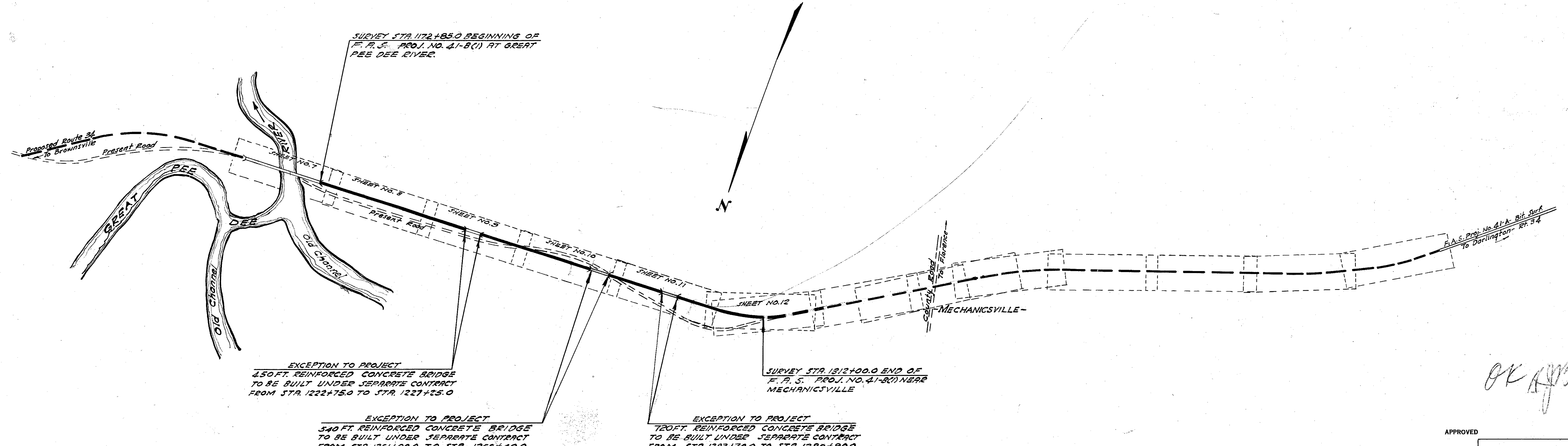
  

TOTAL PIPE FOR CULVERTS		TOTALS	
DIA.	REIN. CONCRETE	REIN. CONCRETE	REIN. CONCRETE
6"	200	192	
18"			
24"			
30"			
36"			

TOTAL CLEARING AND GRUBBING OF BORROW AND MATERIAL PITS.		ACRES
TOTAL COMMON EXCAVATION		10.3045
TOTAL OVERHAUL		58.36
TOTAL SELECTED MATERIAL FOR SLOPES		89.75
TOTAL PLANTING OF SLOPES		89.75
TOTAL UNGRADED TIMBER SHOULDER DRAINS		6.744
TOTAL TILE UNDERDRAIN (L)		3000
TOTAL FED. AID MARKERS		2
TOTAL FED. AID PROJECT NUMBER PLATES		2

\*Includes 34,905 C.Y. for ditches and ramps.  
 †Includes 833,982 C.Y.H.M. on roadway material.  
 ‡Includes 10% for any extra material necessary.  
 §to be placed as directed by Res. Engineer.



EXCEPTION TO PROJECT  
 450 FT. REINFORCED CONCRETE BRIDGE  
 TO BE BUILT UNDER SEPARATE CONTRACT  
 FROM STA. 1222+75.0 TO STA. 1227+25.0

EXCEPTION TO PROJECT  
 340 FT. REINFORCED CONCRETE BRIDGE  
 TO BE BUILT UNDER SEPARATE CONTRACT  
 FROM STA. 1266+40.0 TO STA. 1266+40.0

EXCEPTION TO PROJECT  
 120 FT. REINFORCED CONCRETE BRIDGE  
 TO BE BUILT UNDER SEPARATE CONTRACT  
 FROM STA. 1290+90.0 TO STA. 1290+90.0

**CONVENTIONAL SIGNS**

State Line	Trolley Poles	Marsh
County Line	Power Poles	Brush
City or Town Limits	Telephone or Telegraph Poles	Stumps
Property Line	Fence	Buildings
Retaining Wall	Existing Road	Bridge
Existing Road	Proposed Road	Concrete Box Culvert
Levee or Embankment	Railroad	Pipe Culvert
Guard Rail	Levee or Embankment	Drop Inlet and Culvert
Point of Intersection (P. I.)	Guard Rail	Hub on Center Line



**LAYOUT**  
 Scale: 1 inch = 1500 feet

Net Length of Roadway	=	2.311	Miles
Net Length of Bridges	=	0.000	Miles
Net Length of Project	=	2.311	Miles
Length of Exceptions	=	0.523	Miles
Gross Length of Project	=	2.634	Miles

Equalities in Stationing  
 NONE

Note: All workmanship and material on this project to conform with South Carolina State Highway Department Standard Specifications for Highway Construction dated March 15th, 1939, as approved by the U. S. Secretary of Agriculture.

APPROVED

*Williamson*  
 STATE HIGHWAY ENGINEER DATE 1-22-40

RECOMMENDED FOR APPROVAL

DISTRICT ENGINEER  
 PUBLIC ROADS ADMINISTRATION  
 FEDERAL WORKS AGENCY

APPROVED

COMMISSIONER  
 PUBLIC ROADS ADMINISTRATION  
 FEDERAL WORKS AGENCY

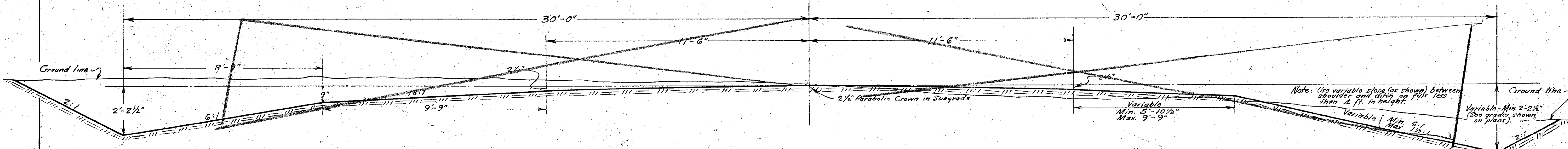
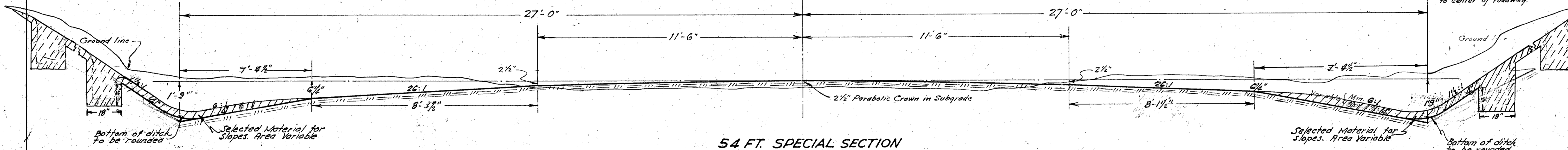
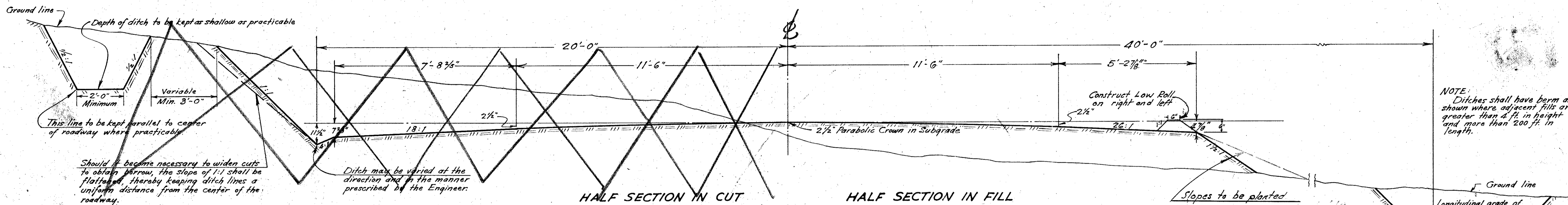
SOUTH CAROLINA HIGHWAY DEPARTMENT  
COLUMBIA, S. C.

TYPICAL SECTIONS  
FOR  
GRADING

Fed. Road Dist. No.	State	County	F.A.S. Proj. No.	Rt. No.	Sheet No.	Total Sheets
14	S.C.	DARLINGTON	41-303	3d	2	37

**NOTE:**  
Excavation of Intercepting Ditches should be done in advance of excavation of adjoining roadway cuts. Material excavated from these ditches shall be used on roadway embankments.

SCALE: 1" = 2'-0"



Drawn by Carl W. Metz - 6-20-38  
Checked by J. D. McRae - 6-21-38

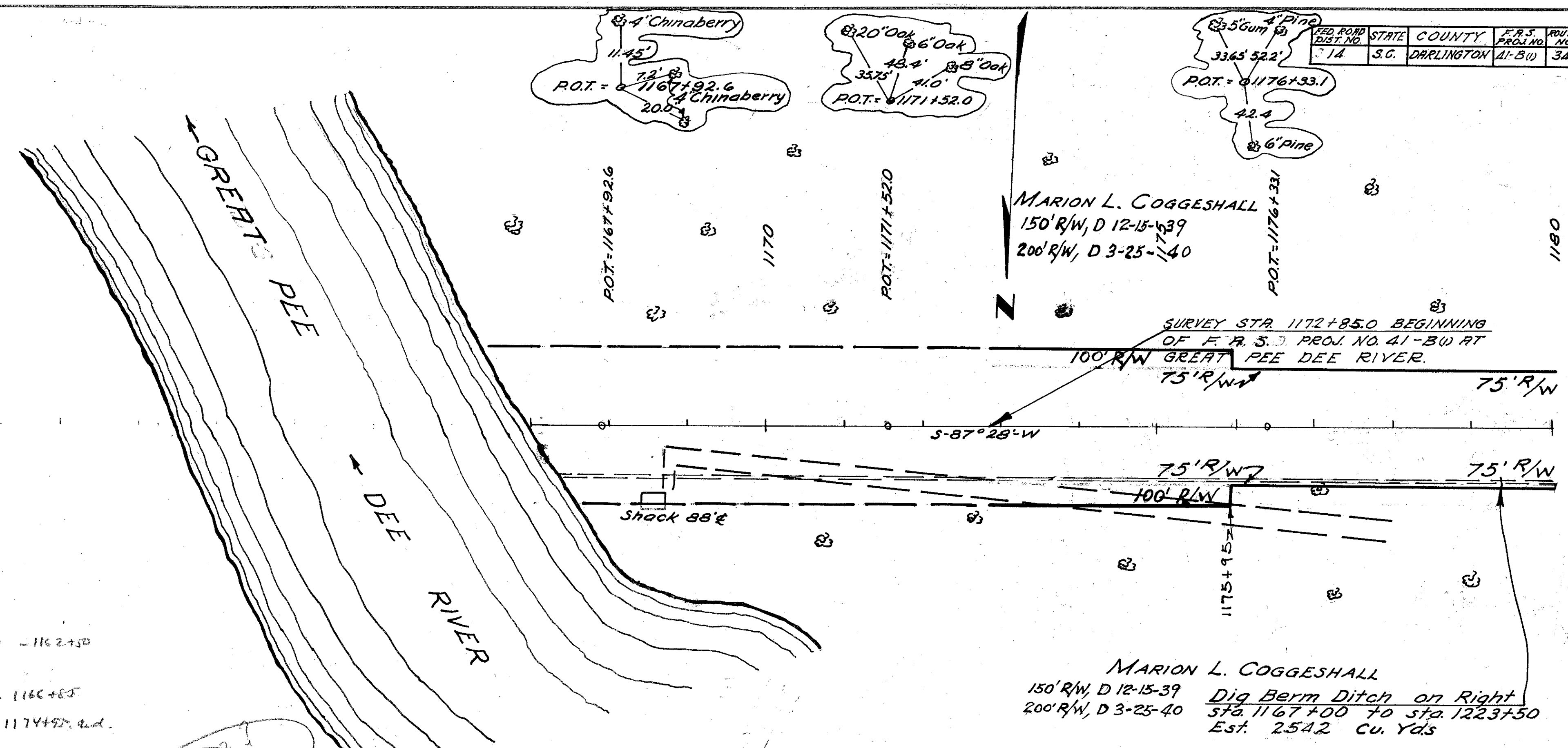
APPROVED  
STATE HIGHWAY ENGINEER  
DATE

DRAWING NO.  
**G-1**

FED. ROAD DIST. NO.	STATE	COUNTY	F.R.S. PROJ. NO.	ROUTE NO.	SHEET NO.	TOTAL SHEETS
14	S.G.	DARLINGTON	41-BU	34	7	37

PLAN	SURVEYED	DATE
NOTE BOOK	PLOTTED	BY
ALIGNMENT CHECKED	BY	
RT. OF WAY CHECKED	BY	
NO.		

PROFILE	SURVEYED	DATE
NOTE BOOK	PLOTTED	BY
GRADES CHECKED	BY	
STRUCTURE NOTATIONS CHECKED	BY	
NO.		



Bridge begin 1152+60 - 1162+50  
 23030  
 97-6-110 1162+50 - 1166+85  
 27030 1166+85 - 1174+50 end.

MARION L. COGGESHALL  
 150' R/W, D 12-15-39  
 200' R/W, D 3-25-40

MARION L. COGGESHALL  
 150' R/W, D 12-15-39  
 200' R/W, D 3-25-40  
 Dig Berm Ditch on Right  
 Sta 1167+00 to Sta 1223+50  
 Est. 2,542 Cu. Yds

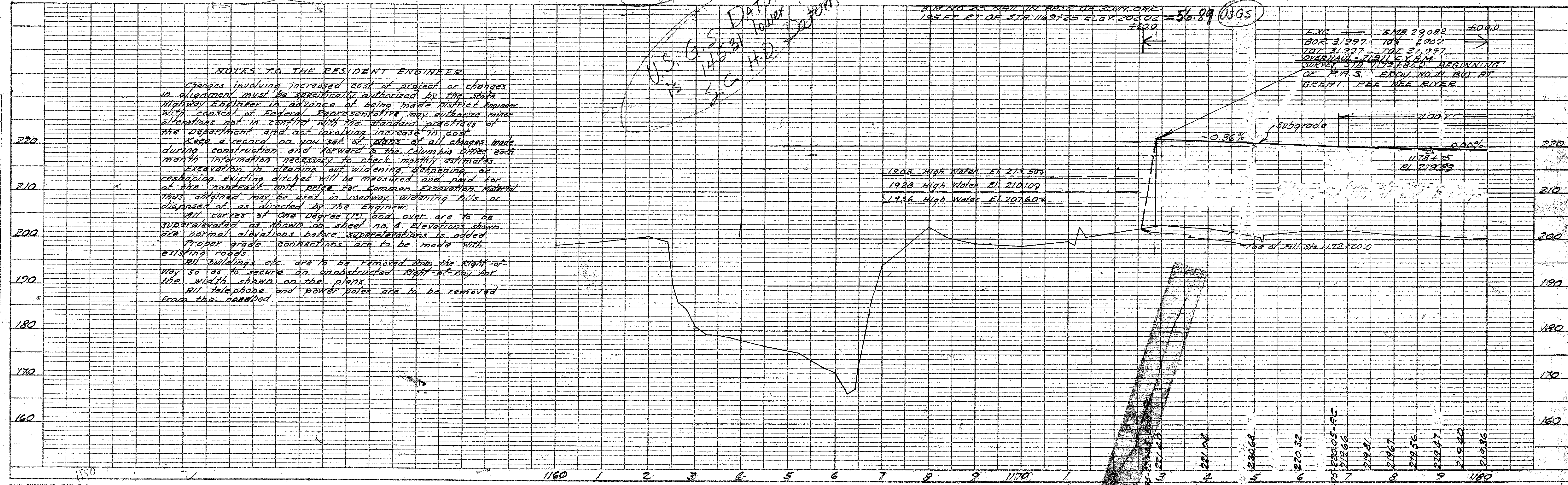
U.S. G.S. DATUM than  
 1/45.31  
 S.G. H.D. Datum

B.M. NO. 25 NAIL IN BASE OF JOINT OR  
 195 FT. RT. OF STA 1169+25 ELEV. 202.02  
 +60.0 = 56.89 (1595)

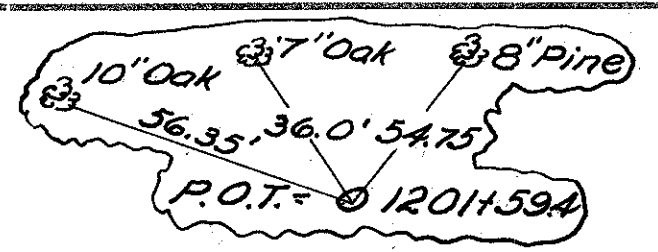
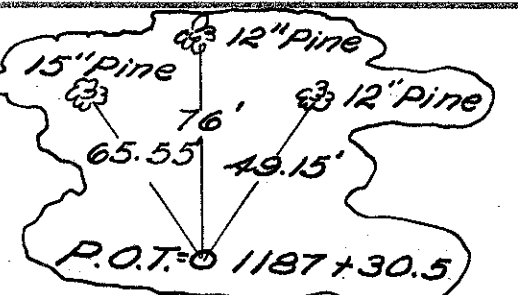
EXC. — EMB 29088 #000  
 BOR. 31997 10% 2909  
 TOT. 31997 TOT. 31997  
 OVERHAUL = 7191 G.Y.M.  
 SURVEY STA 1172+85.0 BEGINNING  
 OF F.R.S. PROJ. NO. 41-BU AT  
 GREAT PEE DEE RIVER

**NOTES TO THE RESIDENT ENGINEER**  
 Changes involving increased cost of project or changes in alignment must be specifically authorized by the State Highway Engineer in advance of being made. District Engineer with consent of Federal Representative may authorize minor alterations not in conflict with the standard practices of the Department and not involving increase in cost. Keep a record on you set of plans of all changes made during construction and forward to the Columbia Office each month information necessary to check monthly estimates. Excavation in cleaning out, widening, deepening, or reshaping existing ditches will be measured and paid for at the contract unit price for common Excavation Material thus obtained may be used in roadway, widening fills or disposed of as directed by the Engineer. All curves of one degree (70') and over are to be super-elevated as shown on sheet no. 4. Elevations shown are normal elevations before super-elevations is added. Proper grade connections are to be made with existing roads. All buildings etc. are to be removed from the Right-of-Way so as to secure an unobstructed Right-of-Way for the width shown on the plans. All telephone and power poles are to be removed from the roadbed.

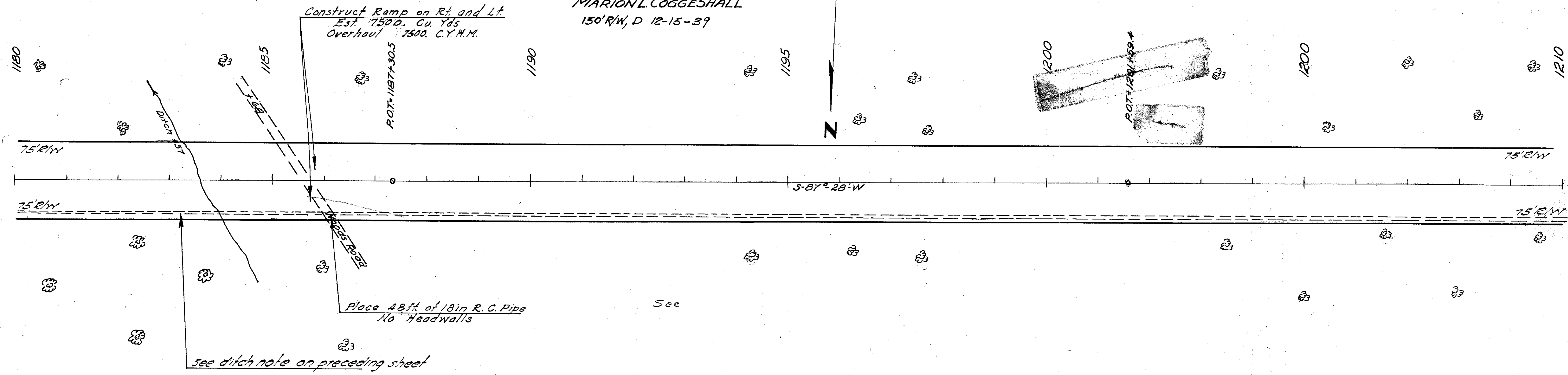
1908 High Water El. 213.50  
 1928 High Water El. 210.10  
 1936 High Water El. 207.60



FED. ROAD DIST. NO.	STATE	COUNTY	F.P.S. PROJ. NO.	ROUTE NO.	SHEET NO.	TOTAL SHEETS
14	S.C.	DARLINGTON	41-511	34	3	37



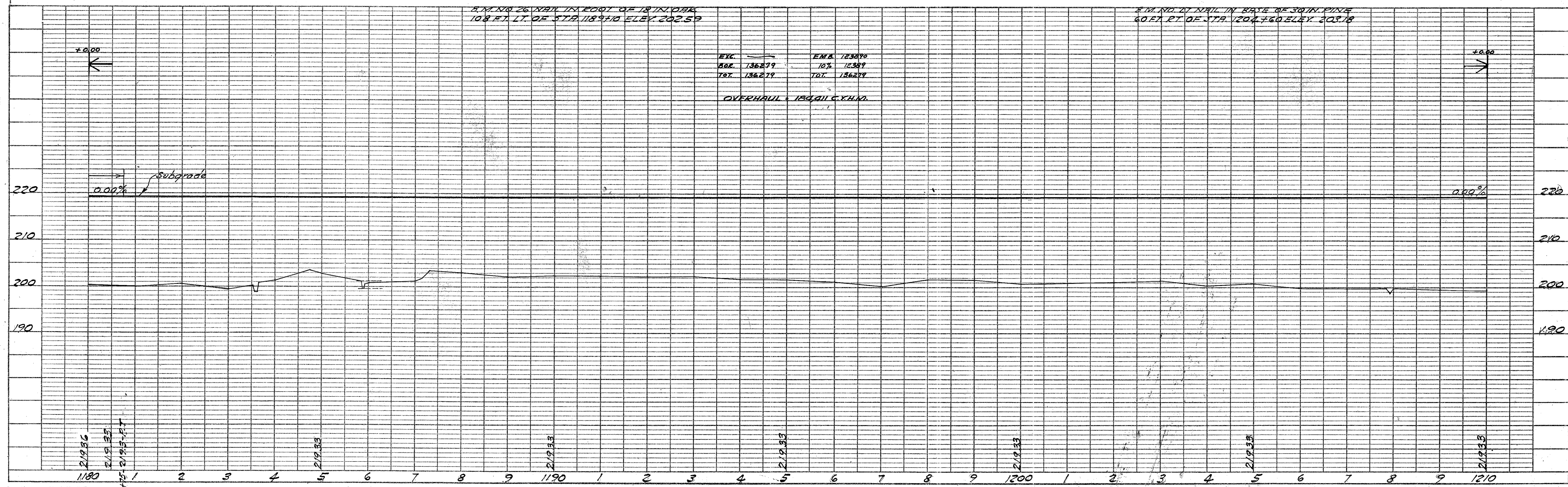
PLAN SURVEYED BY L.A.H.  
 NOTE BOOK NO. \_\_\_\_\_  
 PLOTTED BY \_\_\_\_\_  
 ALIGNMENT CHECKED BY \_\_\_\_\_  
 RT. OF WAY CHECKED BY \_\_\_\_\_



MARION L. COGGESHALL  
 150' R/W, D 12-15-39

MARION L. COGGESHALL  
 150' R/W, D 12-15-39

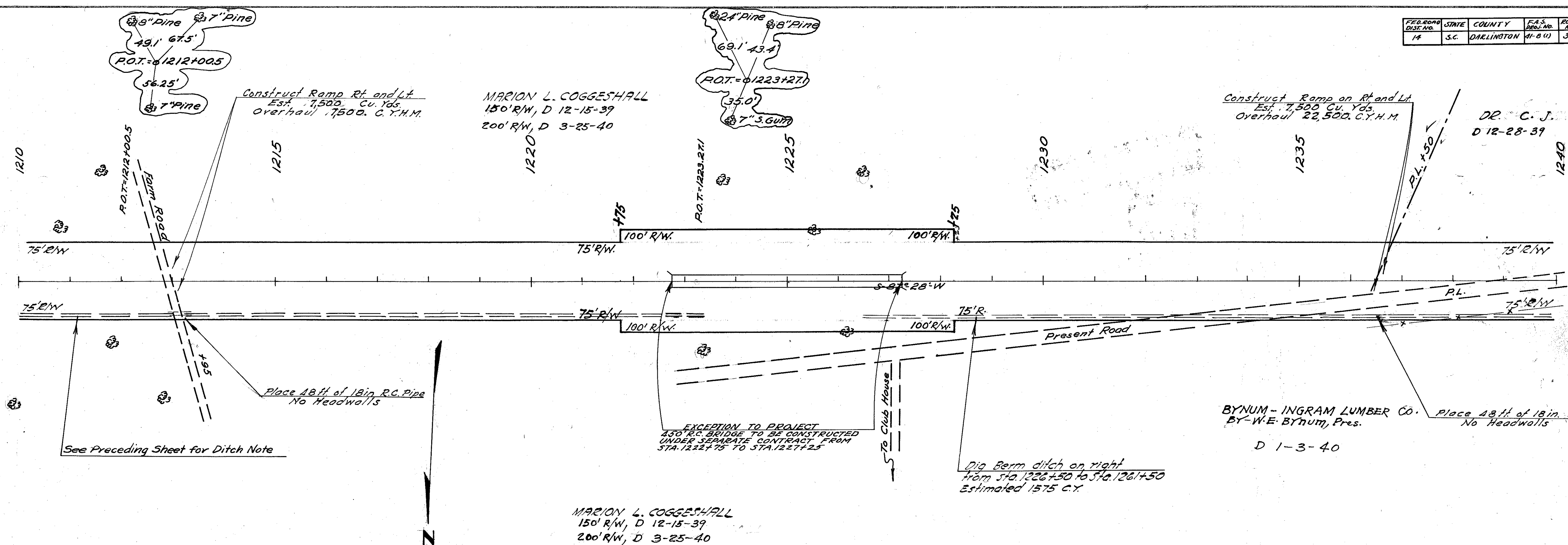
PROFILE SURVEYED BY \_\_\_\_\_  
 NOTE BOOK NO. \_\_\_\_\_  
 PLOTTED BY \_\_\_\_\_  
 CHECKED BY \_\_\_\_\_  
 B.M. & NOTES BY \_\_\_\_\_  
 STRUCTURE NOT IN CHECK



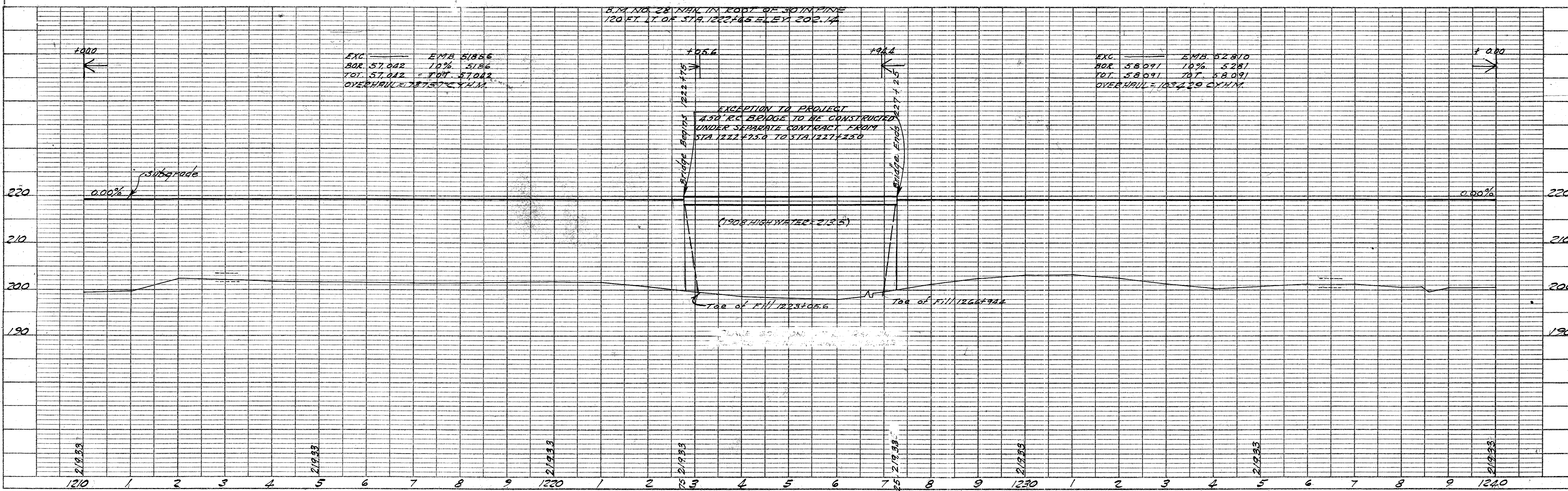
Liney  
 Darlington

FED. ROAD DIST. NO.	STATE	COUNTY	F.A.S. PROJ. NO.	ROUTE NO.	SHEET NO.	TOTAL SHEETS
14	S.C.	DARLINGTON	41-841	34	9	37

PLAN	SURVEYED	DATE
NOTE BOOK	PLOTTED	BY
ALIGNMENT CHECKED	LAH	
RT. OF WAY CHECKED		
NO.		



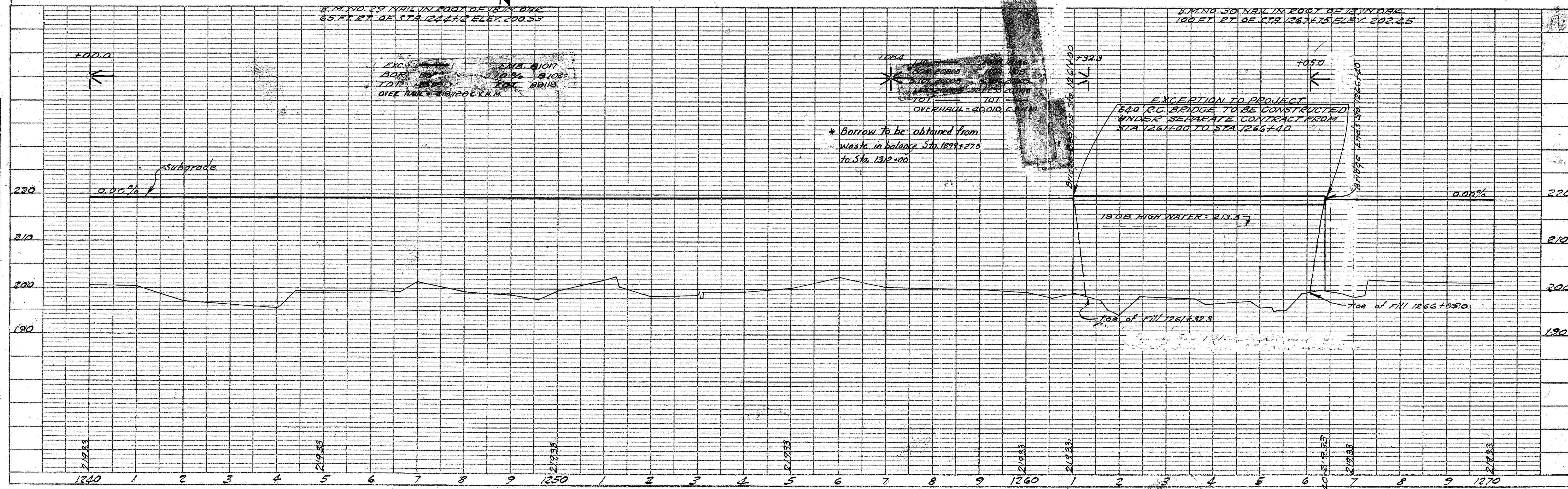
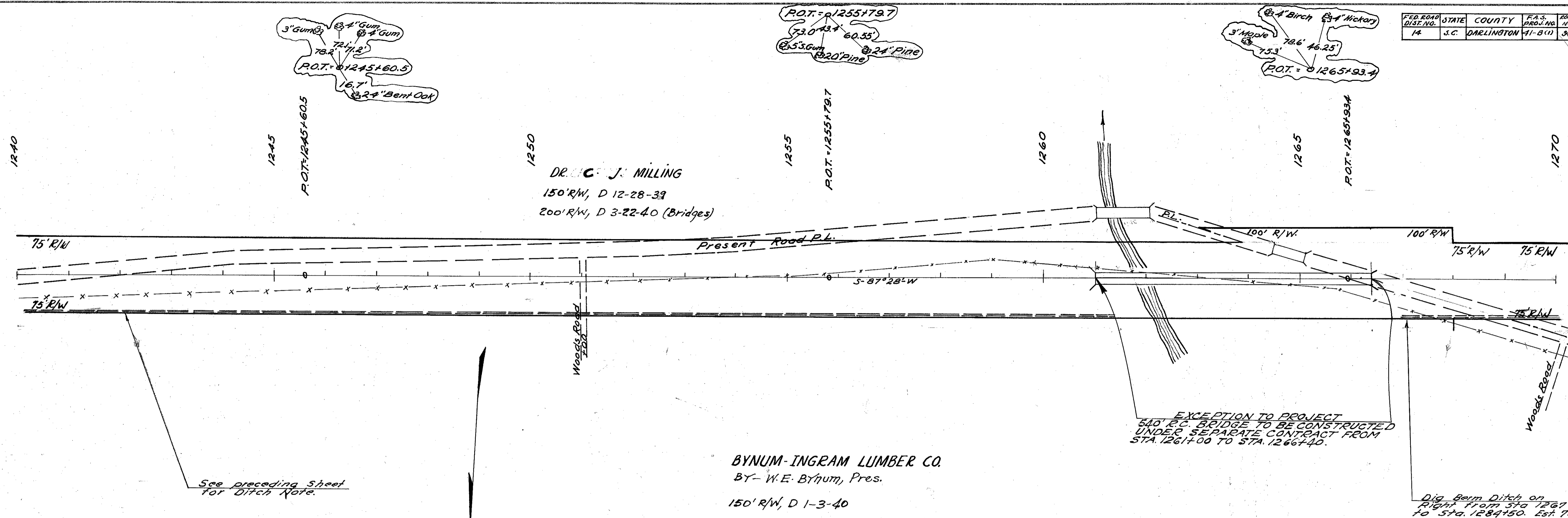
PROFILE	SURVEYED	DATE
NOTE BOOK	PLOTTED	BY
GRADES CHECKED		
STRUCTURE NOTATIONS CHECKED		
NO.		



FED. ROAD DIST. NO.	STATE	COUNTY	F.A.S. PROJ. NO.	ROUTE NO.	SHEET NO.	TOTAL SHEETS
14	S.C.	DARLINGTON	41-8(1)	34	10	37

PLAN	SURVEYED	DATE
NOTE BOOK	PLOTTED	BY
ALIGNMENT CHECKED	BY	
RT. OF WAY CHECKED	BY	
NO.		

PROFILE	SURVEYED	DATE
NOTE BOOK	PLOTTED	BY
STRUCTURE NOT CHECKED	BY	
NO.		

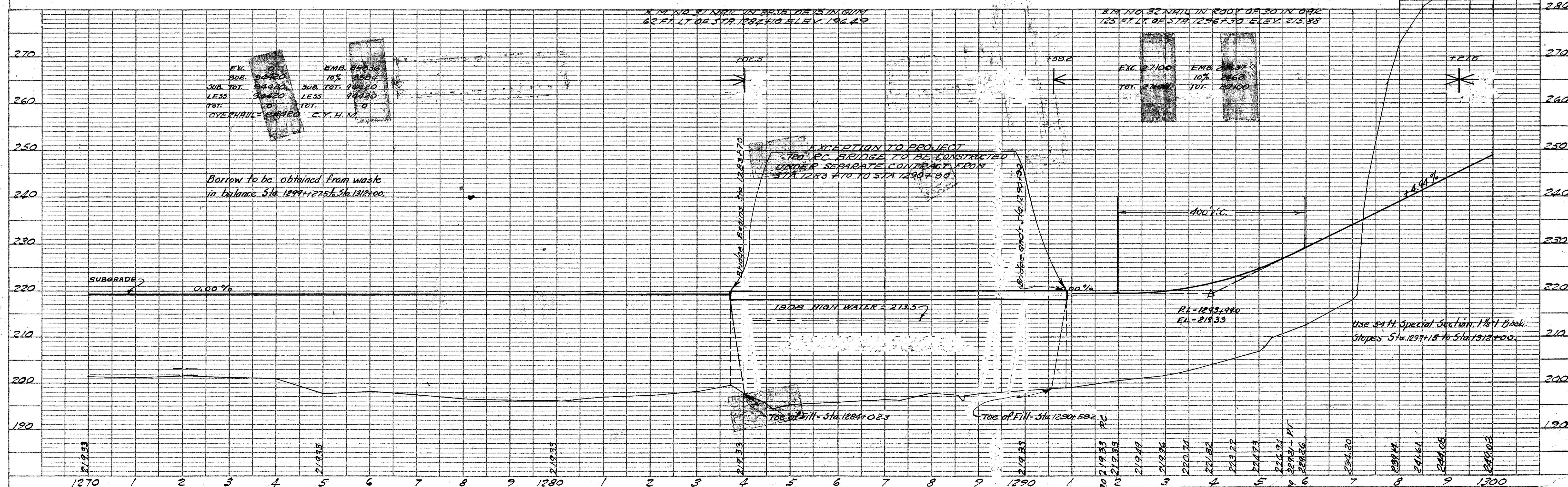
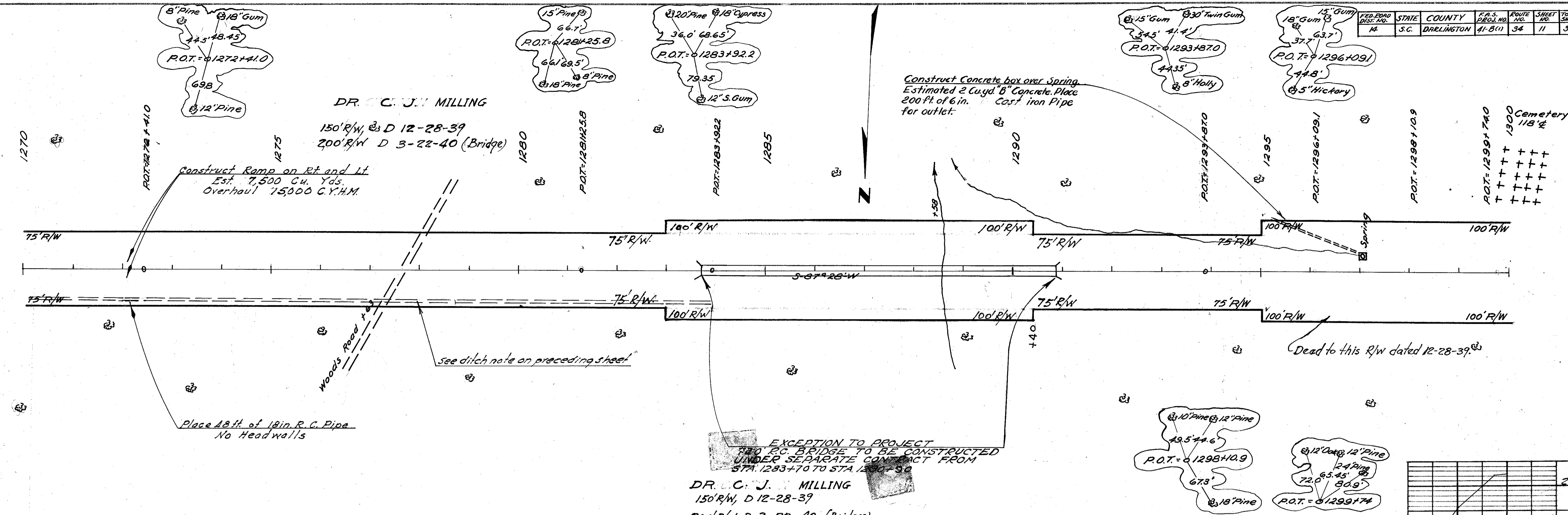


Line 4  
Darlington

FED. ROAD DIST. NO.	STATE	COUNTY	F.A.S. PROJ. NO.	ROUTE NO.	SHEET NO.	TOTAL SHEETS
14	S.C.	DREELINGTON	41-B(1)	34	11	37

DATE	BY	PLAN
		PLANNED
		NOTED
		ALIGNED
		BY SP. WAY CHECKED
		NO.

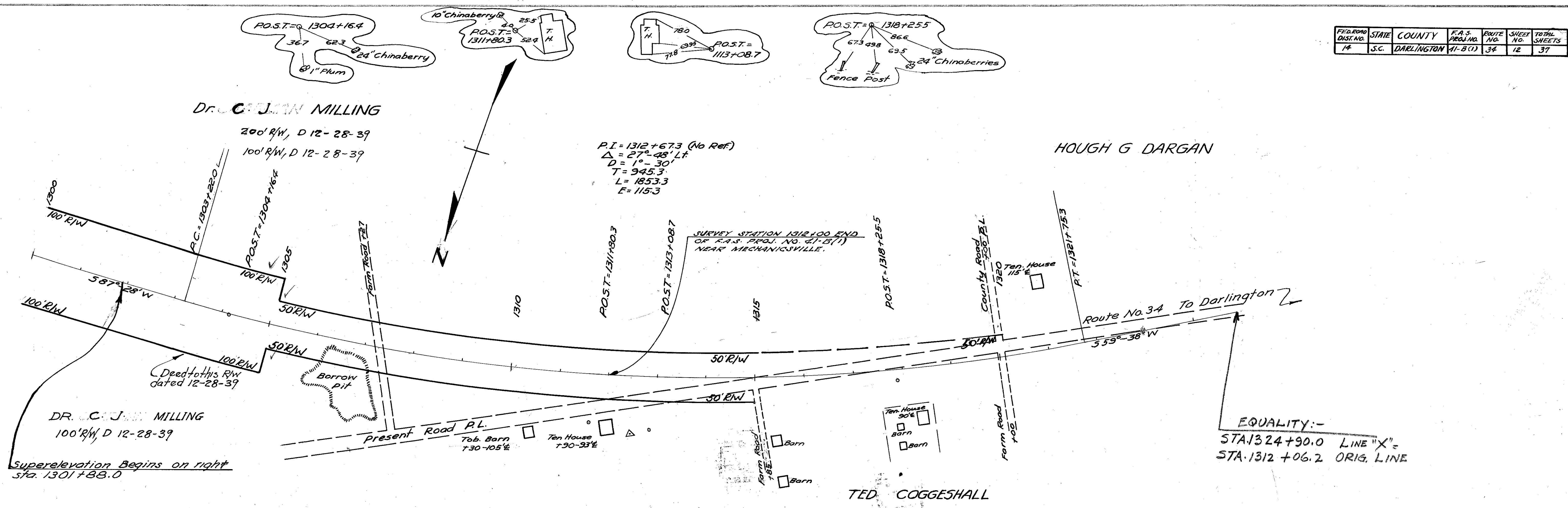
DATE	BY	PROFILE
		PLANNED
		NOTED
		ALIGNED
		BY SP. WAY CHECKED
		NO.



Liney  
Dahlington

FED. ROAD DIST. NO.	STATE	COUNTY	F.A.S. PROJ. NO.	ROUTE NO.	SHEET NO.	TOTAL SHEETS
14	S.C.	DARLINGTON	41-8(1)	34	12	37

PLAN	DATE
SURVEYED	
NOTE BOOK	
GRADES CHECKED	
ALIGNMENT CHECKED	
RT. OF WAY CHECKED	
BY	L.A.H.
NO.	



PROFILE	DATE
SURVEYED	
PLOTTED	
GRADES CHECKED	
B.M. NOTED	
STRUCTURE NOTATIONS CHECKED	
BY	
NO.	

