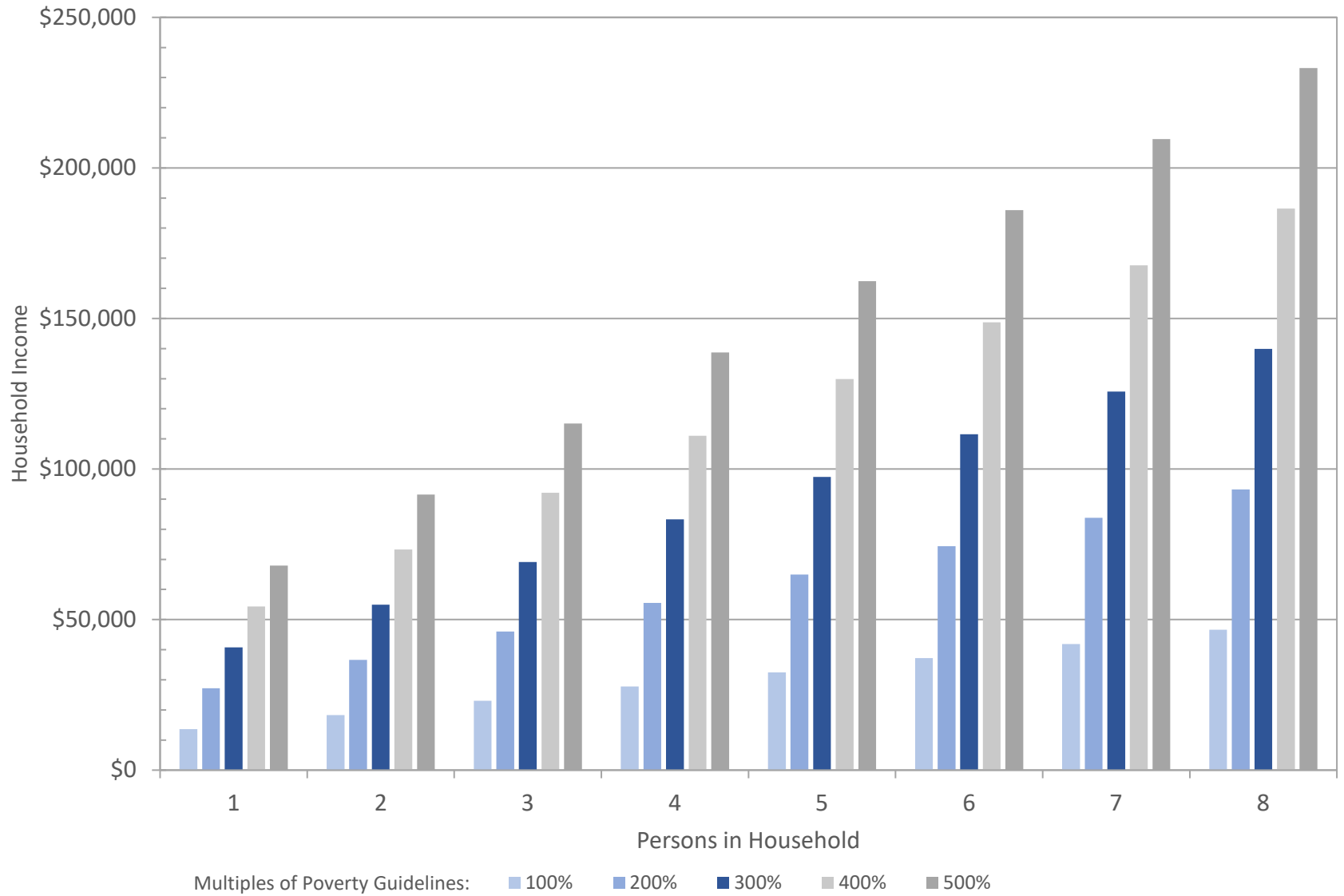


ANNUAL INCOME LIMITS UNDER FEDERAL POVERTY GUIDELINES

Multiples of 2022 Federal Poverty Guidelines for Various Household Sizes



Source: Office of the Assistant Secretary for Planning and Evaluation, RFA/am/07/05/22

FEDERAL POVERTY GUIDELINE ANNUAL LIMITS FOR THE 48 CONTINGUOUS STATES AND THE DISTRICT OF COLUMBIA, 2022

PERSONS IN FAMILY/HOUSEHOLD	100%	200%	300%	400%	500%
1	\$ 13,590	\$ 27,180	\$ 40,770	\$ 54,360	\$ 67,950
2	\$ 18,310	\$ 36,620	\$ 54,930	\$ 73,240	\$ 91,550
3	\$ 23,030	\$ 46,060	\$ 69,090	\$ 92,120	\$ 115,150
4	\$ 27,750	\$ 55,500	\$ 83,250	\$ 111,000	\$ 138,750
5	\$ 32,470	\$ 64,940	\$ 97,410	\$ 129,880	\$ 162,350
6	\$ 37,190	\$ 74,380	\$ 111,570	\$ 148,760	\$ 185,950
7	\$ 41,910	\$ 83,820	\$ 125,730	\$ 167,640	\$ 209,550
8	\$ 46,630	\$ 93,260	\$ 139,890	\$ 186,520	\$ 233,150

This table shows the annual incomes for households at multiples of the Federal Poverty Guidelines, which are updated periodically in the Federal Register by the U.S. Department of Health and Human Services under the authority of 42 U.S.C. 9902(2). These guidelines are used for determining financial eligibility for certain federal programs.

For more information concerning federal poverty guidelines, please visit the Office of the Assistant Secretary for Planning and Evaluation (ASPE) website: <https://aspe.hhs.gov/topics/poverty-economic-mobility/poverty-guidelines>.

Disclaimer: This document is intended for reference only. Official eligibility is determined by the agency overseeing each program.

Source: SC Revenue and Fiscal Affairs 7/5/2022

2022 PROGRAM ELGIBILITY USING THE FEDERAL POVERTY GUIDELINE

PERSONS IN FAMILY/HOUSEHOLD	FEDERAL POVERTY GUIDELINE	Public Assistance Program:	Parent/Caretaker Relatives	Head Start	Supplemental Nutrition Assistance Program	Low Income Home Energy/Water Assistance	Women, Infants, and Children	Pregnant Women and Infants	Children's Health Insurance Program	Partners for Healthy Children	Children with Special Health Care Needs
		% of FPG for Eligibility:	62%	100%	130%	150%	185%	194%	200%	208%	250%
1	\$13,590	Maximum annual income level for program qualification	\$8,426	\$13,590	\$17,667	\$20,385	\$25,142	\$26,365	\$27,180	\$28,267	\$33,975
2	\$18,310		\$11,352	\$18,310	\$23,803	\$27,465	\$33,874	\$35,521	\$36,620	\$38,085	\$45,775
3	\$23,030		\$14,279	\$23,030	\$29,939	\$34,545	\$42,606	\$44,678	\$46,060	\$47,902	\$57,575
4	\$27,750		\$17,205	\$27,750	\$36,075	\$41,625	\$51,338	\$53,835	\$55,500	\$57,720	\$69,375
5	\$32,470		\$20,131	\$32,470	\$42,211	\$48,705	\$60,070	\$62,992	\$64,940	\$67,538	\$81,175
6	\$37,190		\$23,058	\$37,190	\$48,347	\$55,785	\$68,802	\$72,149	\$74,380	\$77,355	\$92,975
7	\$41,910		\$25,984	\$41,910	\$54,483	\$62,865	\$77,534	\$81,305	\$83,820	\$87,173	\$104,775
8	\$46,630		\$28,911	\$46,630	\$60,619	\$69,945	\$86,266	\$90,462	\$93,260	\$96,990	\$116,575

This table provides an example of several public assistance programs that use the Federal Poverty Guideline (FPG) to determine an individual's eligibility based on income. As an example, in order to meet the income eligibility standards for SNAP, a household's gross monthly income cannot exceed 130% of the FPG. To calculate the annual income limit for a household of three, the FPG of \$23,030 is multiplied by 130% (or 1.3).

The purpose of this table is to provide examples of the multiples of the FPG used in assistance programs, and the corresponding annual income limits. This is not an all inclusive list, and other factors may also be used in determining eligibility for these programs. For more information concerning federal poverty guidelines, please visit the Office of the Assistant Secretary for Planning and Evaluation (ASPE) website: <https://aspe.hhs.gov/topics/poverty-economic-mobility/poverty-guidelines>.